

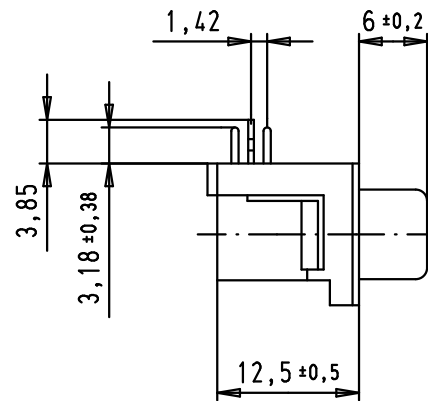
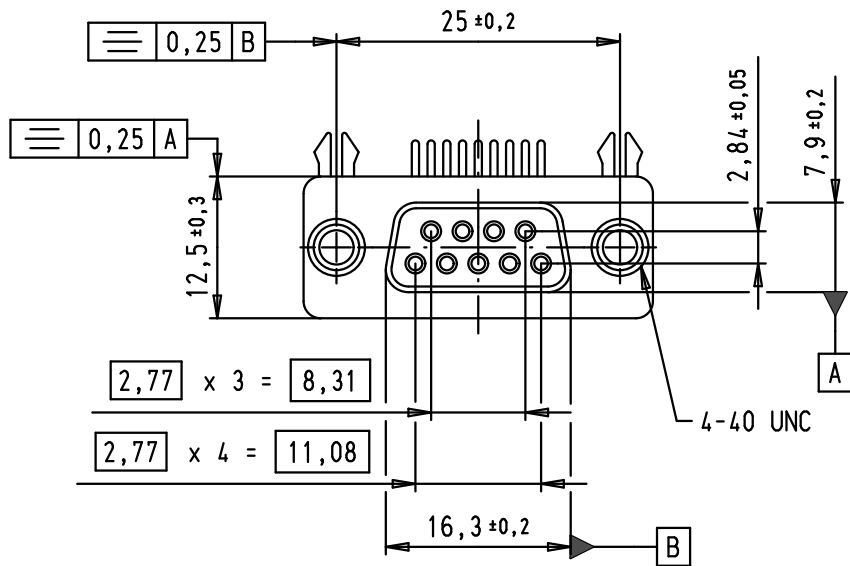
5

4

3

2

1

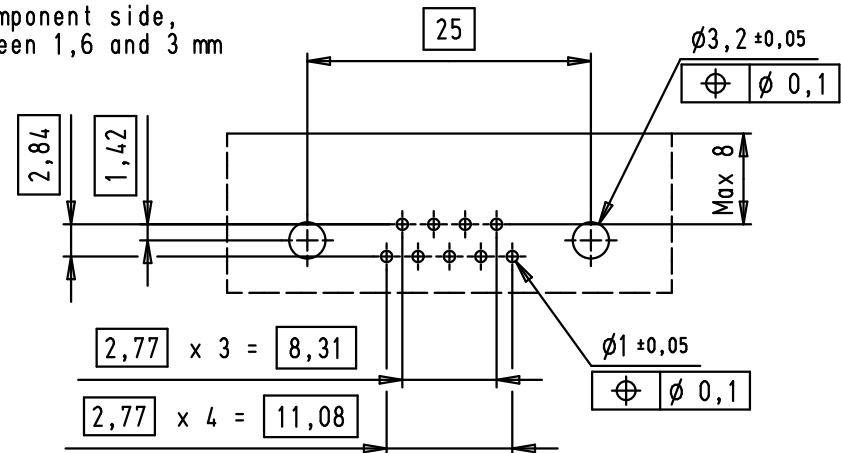
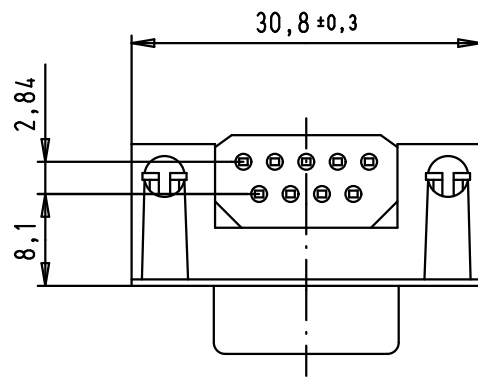


SPECIFICATIONS

FREQUENCY (MHz)	ATTENUATION (dB)
5	1
10	2
50	4
100	4,5
500	4,5
1000	4,5

Operating voltage < 250 V AC
 Working current < 7,5 A
 Insulation resistance > 1GΩ
 Contact resistance < 15 mΩ
 Dielectric withstanding voltage 500 V AC / minute

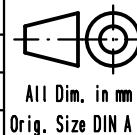
PCB layout, component side,
 thickness between 1,6 and 3 mm



Mod.	Dot.	Name
EC02296	06/09/10	SC
EC00362	02/07/09	PK

Detail.	Dot.	Name
	02/07/09	PK
Insp.		
Stand.		

HARTING EURL
 F-95972 Paris



All Dim. in mm
 Orig. Size DIN A 4

D-Sub, female, angled,
 US footprint, 9 poles,
 tin plated shell,
 solder pins, ferrite filter

Maßstab/
 Scale
 1,5:1

09 64 113 7802	PL3
Part number	Performance level

TB 09 64 113 7802
Sub.

Blatt/ Page
 1 / 1