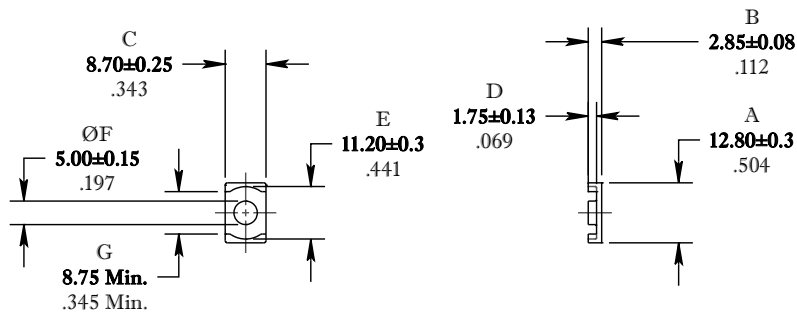


\*\* Not all features are shown in this drawing. For more detailed information, please contact your Fair-Rite representative.

SIZE	PART NO.	REV.
B	9580130302	~

UNCONTROLLED ~CATALOG~ DRAWING




DIMENSIONS  
**BOLD NUMBERS ARE IN MILLIMETERS**  
 LIGHT NUMBERS ARE IN INCHES

ELECTRICAL SPECIFICATIONS						
$\Sigma l/A(\text{mm}^{-1})$	$l_e$ (mm)	$A_e$ (mm <sup>2</sup> )	$A_{\text{Min}}$ (mm <sup>2</sup> )	$V_e$ (mm <sup>3</sup> )	$A_L$ (nH) @ 10 kHz <10gauss	$\tan \delta/\mu_i$ @ 1 MHz <1gauss
0.856	17.4	20.0	19.2	348	650±25%	≤20X10E-6
MATE PAIR: CLAMPING FORCE = 3 lbs.						

POWER LOSS @ 100°C

f = 1 MHz, 500g. f = 3 MHz, 150g.  
 Measure & Record

FR# 80

 <b>FAIR-RITE PRODUCTS CORP.</b>						
TITLE "EQ" CORE						
DRAWN BY D. FOOTE	DATE 3/19/2019	SIZE	PART NO.	REV.		
CHKD BY		B	9580130302	~		
APPRVD BY		SCALE	NONE	SHEET	1 of 1	