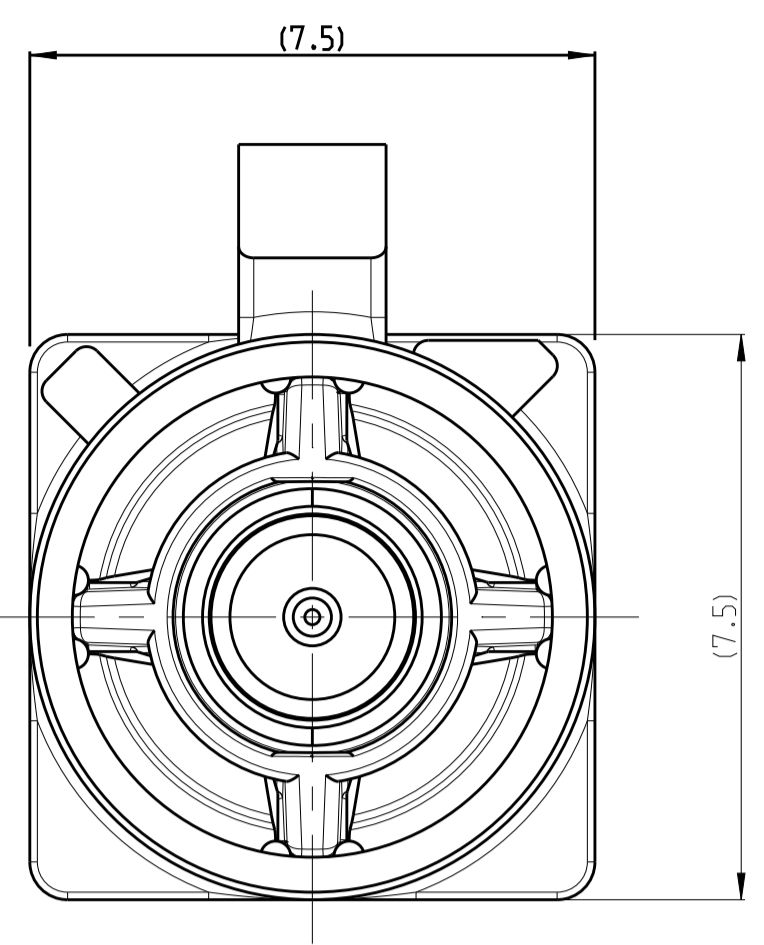
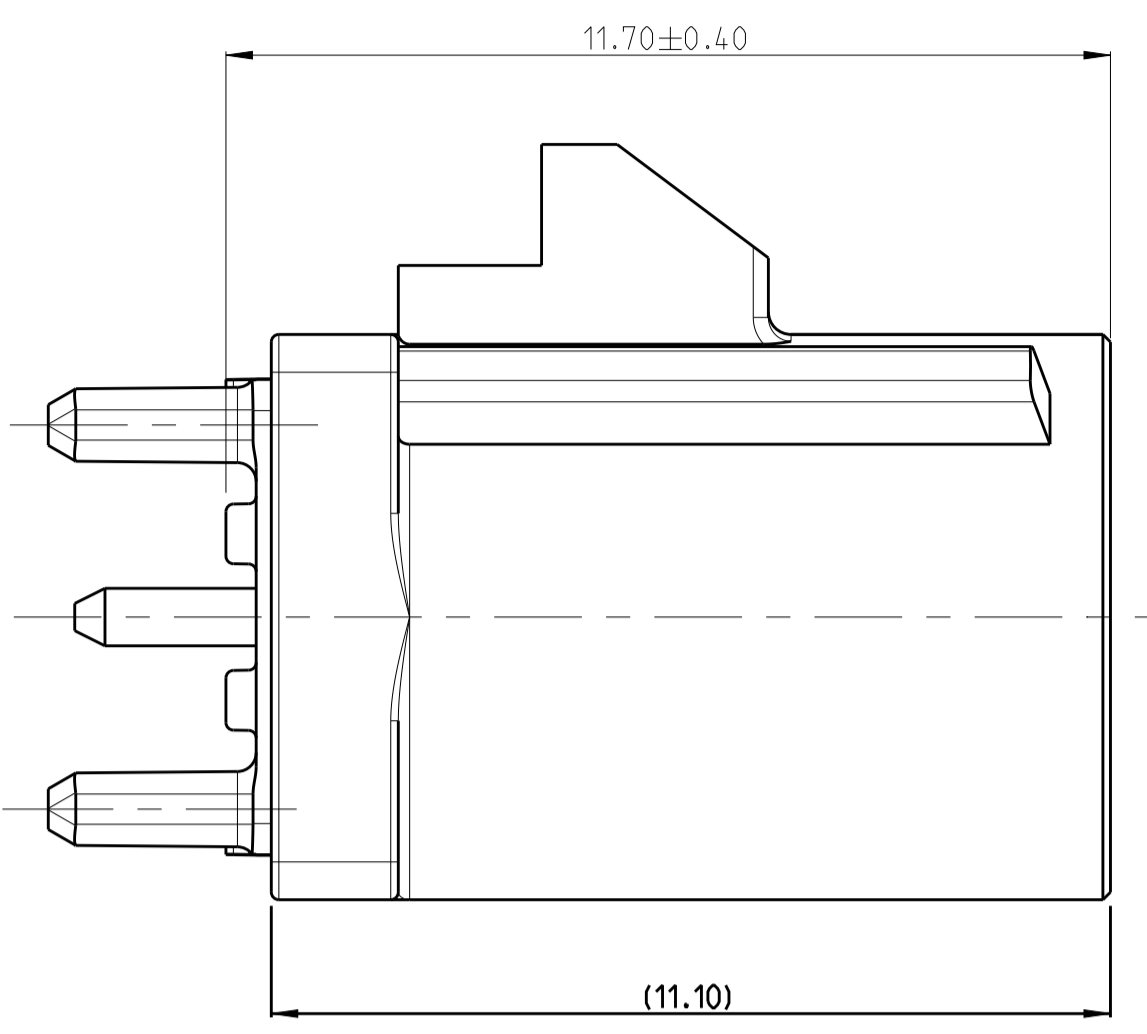
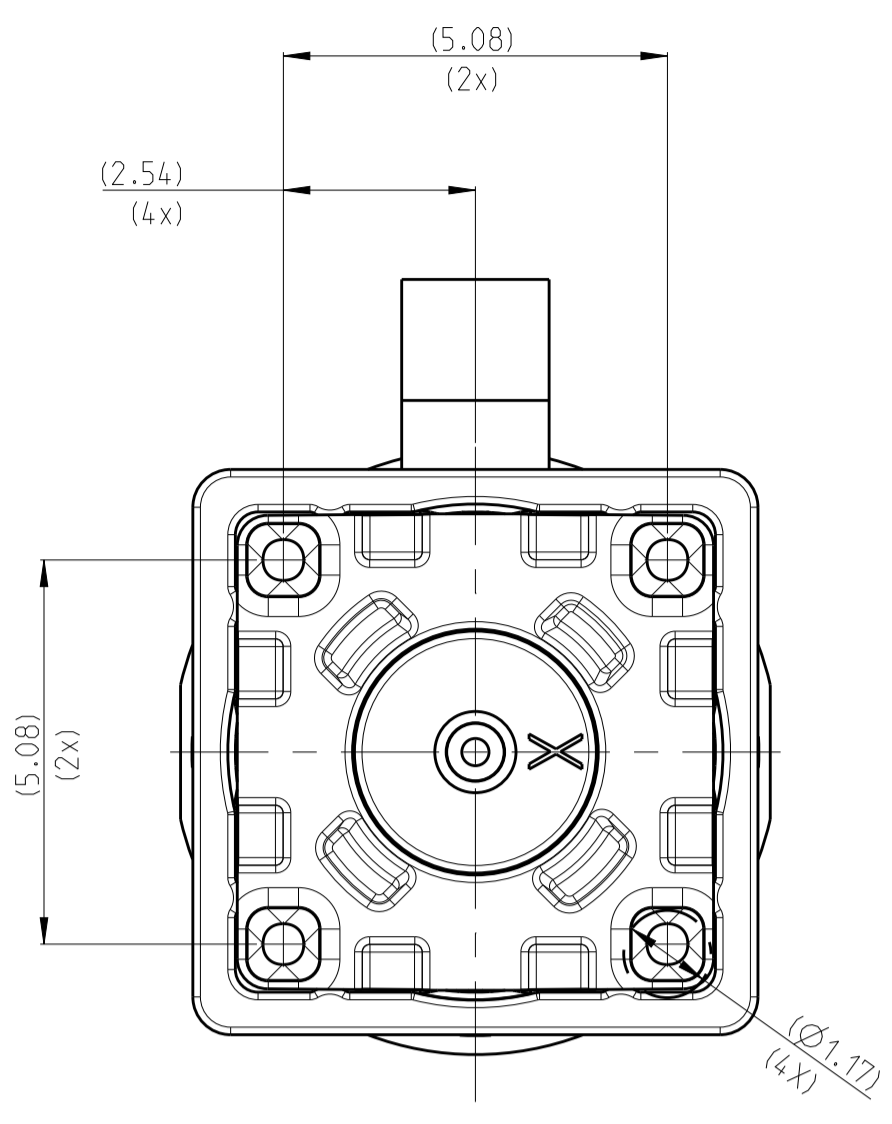
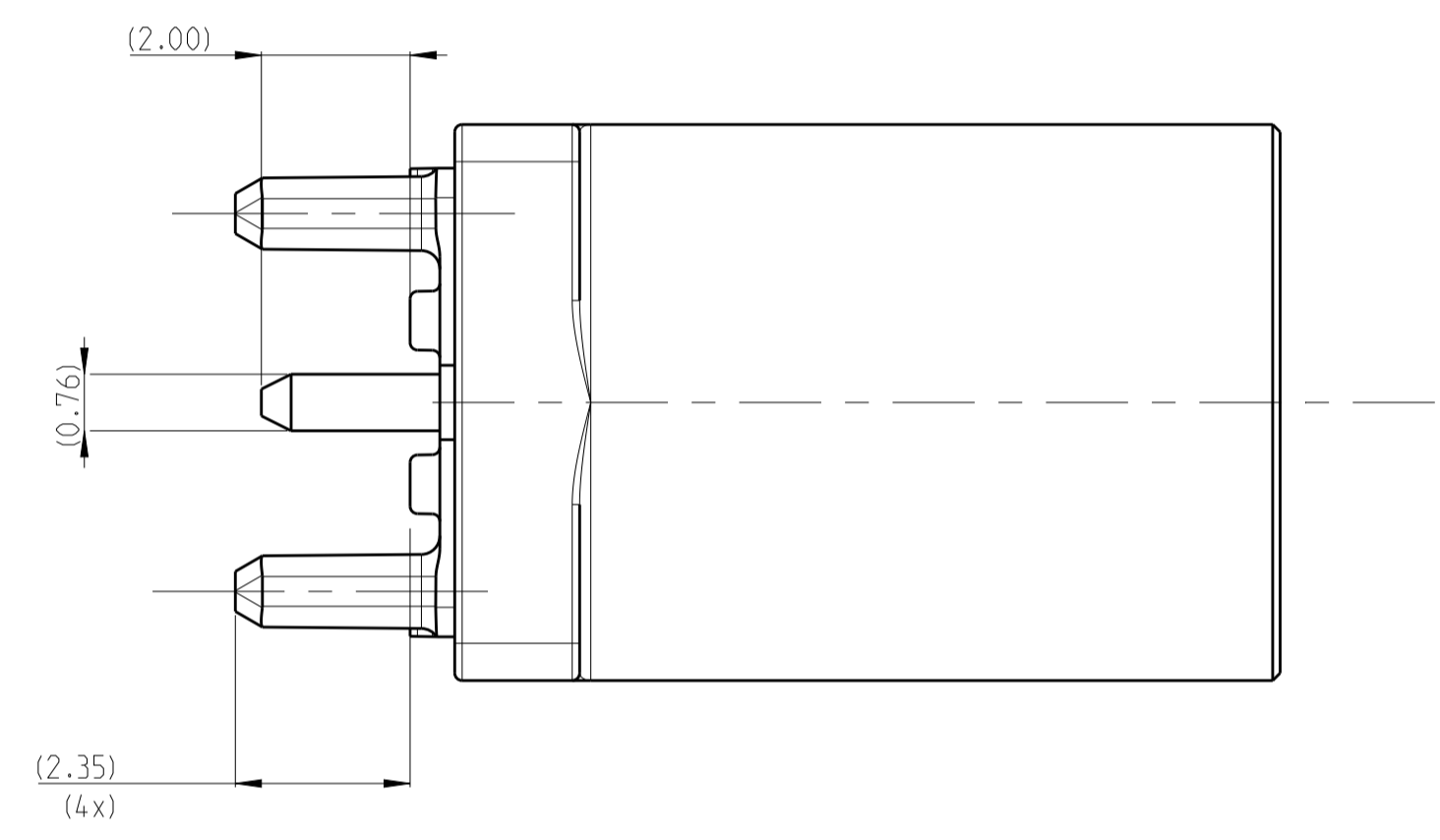
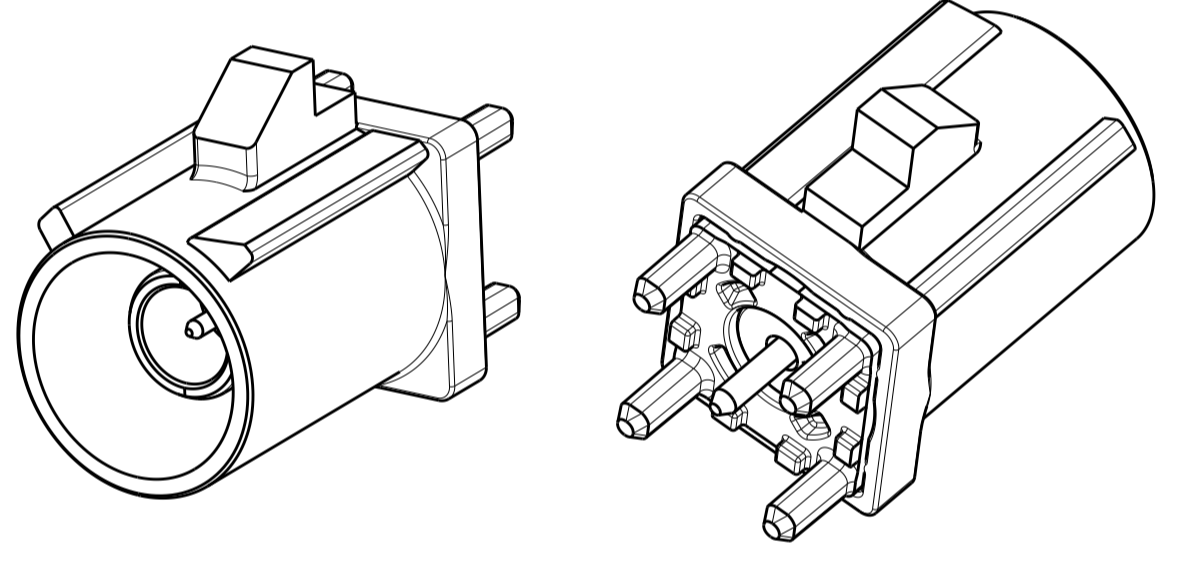


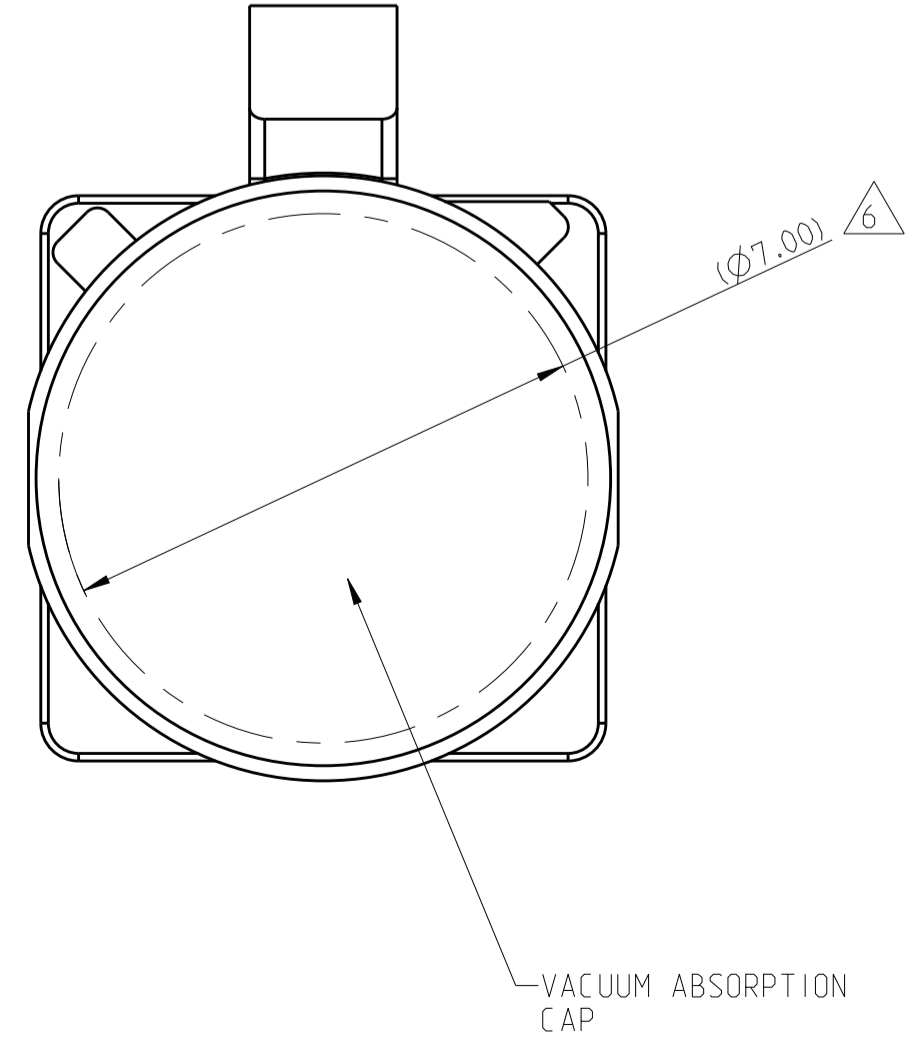
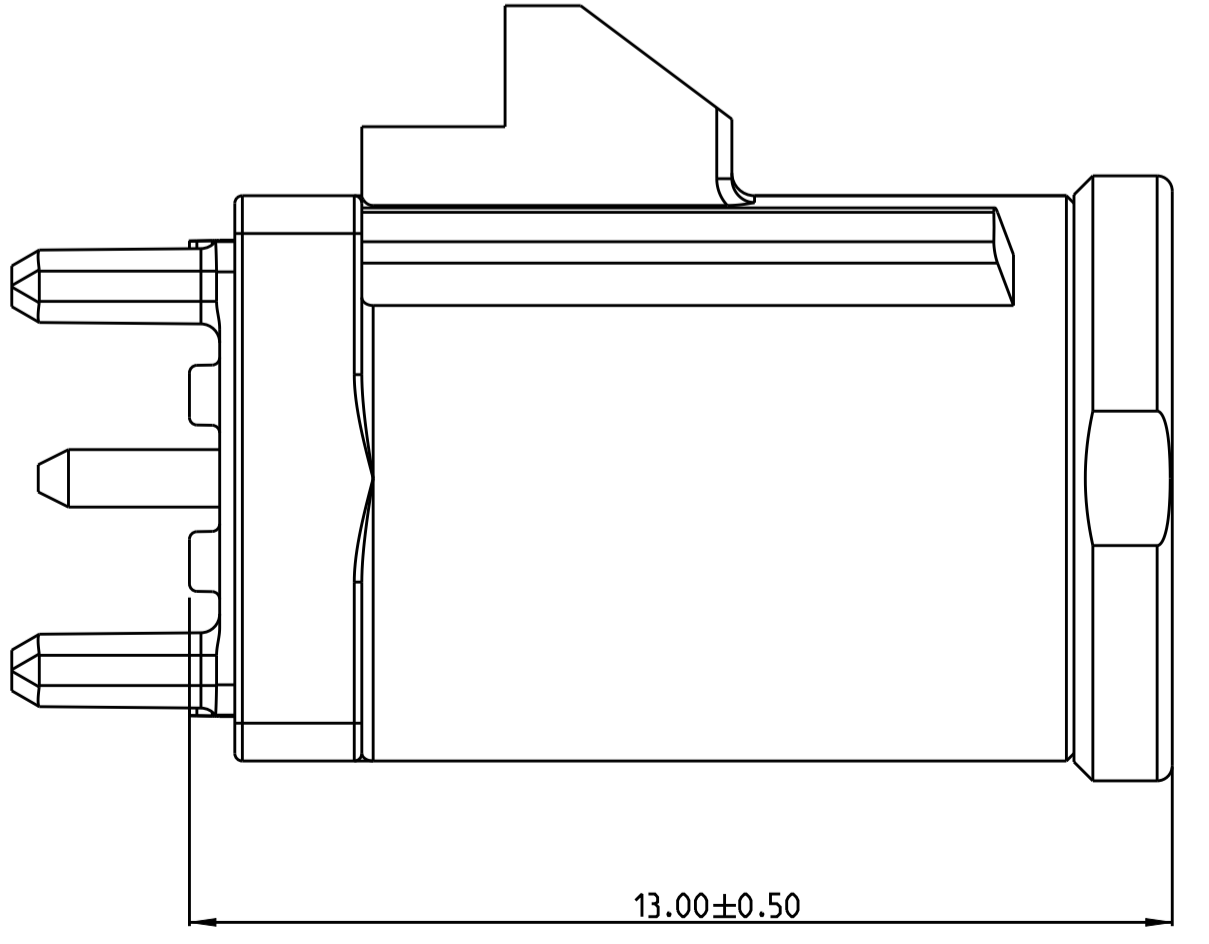
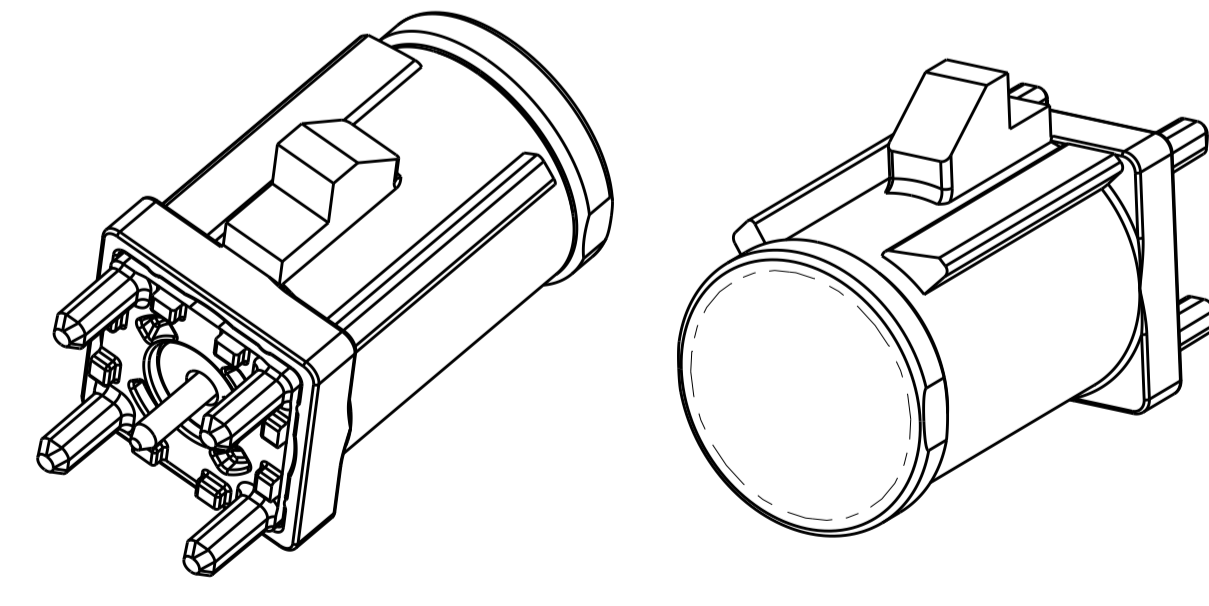
REVISIONS				
P.	LTM	DESCRIPTION	DATE	DWN. APVD
A		INITIAL RELEASE	23AUG18	D.Z W.W
A1		REV PER ECR-20-001015	23JUL20	D.Z W.W



- 1 MATERIAL:
NOSE CONE - NYLON. COLOR: SEE TABLE
DIELECTRIC - POLYESTER PCT. NATURAL
PIN CONTACT - BRASS.
OUTER SHELL - ZINC.
- 2 PIN CONTACT - 0.38 μm MIN GOLD ON INTERFACE END. 2.5 μm MIN TIN ON SOLDER END.
BOTH OVER 1.3 μm MIN NICKEL.
OUTER SHELL - 2.0 μm MIN TIN OVER 1.52 μm MIN NICKEL. BOTH OVER 2.54 μm MIN COPPER.
- 3 MASS = 1.08g.
- 4 MALE INTERFACE PER ISO-20860-1, ROAD VEHICLES 50 Ohm RADIO FREQUENCY INTERFACE.
5. MALE ASSEMBLY MEETS SAE/USCAR-18 REVISION 4.
- 6 VACUUM ABSORPTION AREA



2333210-1 AS SHOWN
WITHOUT CAP VERSION



		PER DETAIL Z	WATER BLUE	Z	4-2333210-0
		PER DETAIL N	PASTEL GREEN	N	3-2333210-3
		PER DETAIL M	PASTEL ORANGE	M	3-2333210-2
		PER DETAIL L	CARMINE RED	L	3-2333210-1
		PER DETAIL K	CURRY	K	3-2333210-0
		PER DETAIL I	BEIGE	I	2-2333210-9
		PER DETAIL H	HEATHER VIOLET	H	2-2333210-8
		PER DETAIL G	BLUE GREY	G	2-2333210-7
		PER DETAIL F	NUT BROWN	F	2-2333210-6
		PER DETAIL E	LEAF GREEN	E	2-2333210-5
		PER DETAIL D	CLARET VIOLET	D	2-2333210-4
		PER DETAIL C	SIGNAL BLUE	C	2-2333210-3
		PER DETAIL B	CREAM	B	2-2333210-2
		PER DETAIL A	JET BLACK	A	2-2333210-1
		PER DETAIL Z	WATER BLUE	Z	2-2333210-0
		PER DETAIL N	PASTEL GREEN	N	1-2333210-3
		PER DETAIL M	PASTEL ORANGE	M	1-2333210-2
		PER DETAIL L	CARMINE RED	L	1-2333210-1
		PER DETAIL K	CURRY	K	1-2333210-0
		PER DETAIL I	BEIGE	I	2333210-9
		PER DETAIL H	HEATHER VIOLET	H	2333210-8
		PER DETAIL G	BLUE GREY	G	2333210-7
		PER DETAIL F	NUT BROWN	F	2333210-6
		PER DETAIL E	LEAF GREEN	E	2333210-5
		PER DETAIL D	CLARET VIOLET	D	2333210-4
		PER DETAIL C	SIGNAL BLUE	C	2333210-3
		PER DETAIL B	CREAM	B	2333210-2
		PER DETAIL A	JET BLACK	A	2333210-1
VACUUM ABSORPTION CAP	FINISH	KEYING	NOSE CONE COLOR	KEYING CODE	PART NUMBER
YES	△ 2				
NO	△ 2				

THIS DRAWING IS A CONTROLLED DOCUMENT. DWN: D.ZHU 16MAR2018
 CHK: C.PAN 27APR2018
 W.W.LJL 23AUG2018

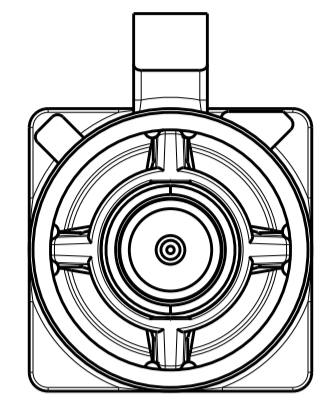
STE TE Connectivity

PRODUCT SPEC: 108-32058
 APPLICATION SPEC: 114-32108

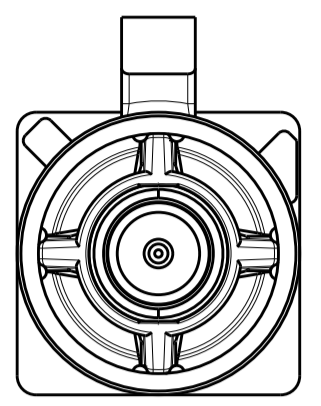
NAME: MALE ASSEMBLY, 1 POSITION, VERTICAL, PCB, FAKRA
 SIZE: A1 CAGE CODE: 00779 DRAWING NO: 2333210 RESTRICTED TO: -
 WEIGHT: 3 SCALE: 10:1 SHEET 1 OF 2 REV: A1

CUSTOMER DRAWING

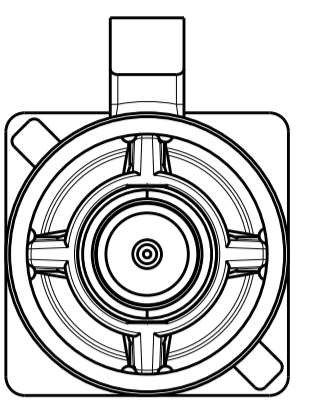
REVISIONS				
P.	LTN	DESCRIPTION	DATE	APVD
-		SEE SHEET 1	-	-



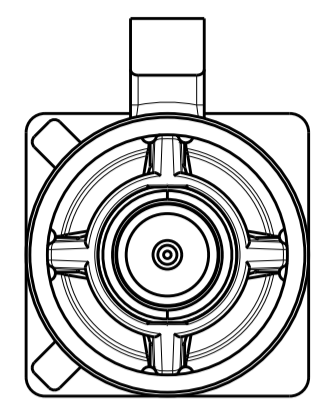
DETAIL A
SCALE 5:1



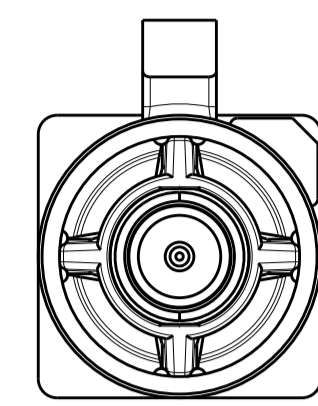
DETAIL B
SCALE 5:1



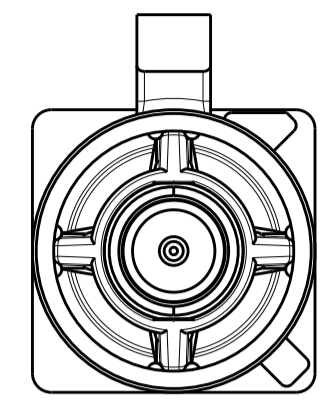
DETAIL C
SCALE 5:1



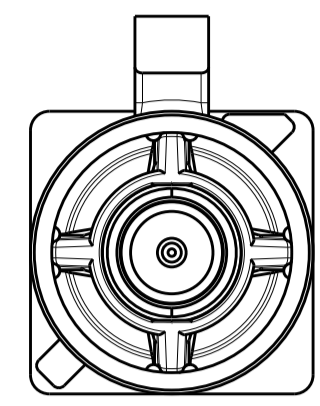
DETAIL D
SCALE 5:1



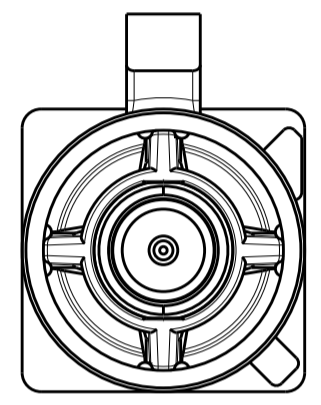
DETAIL E
SCALE 5:1



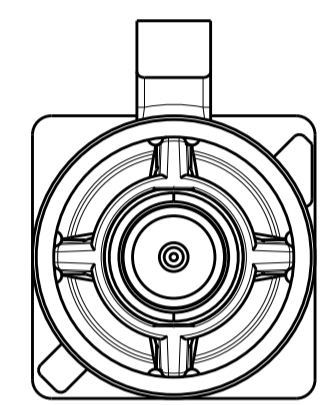
DETAIL F
SCALE 5:1



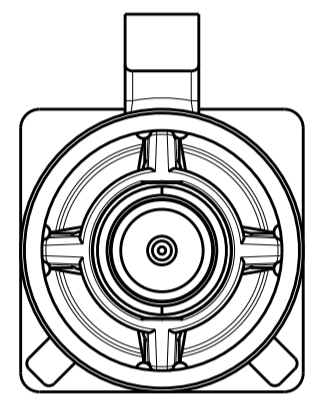
DETAIL G
SCALE 5:1



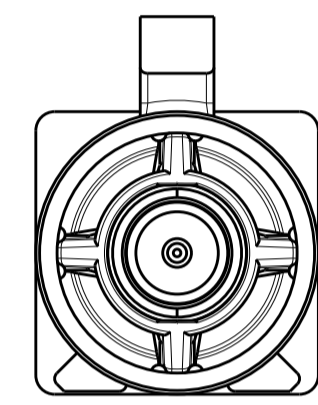
DETAIL H
SCALE 5:1



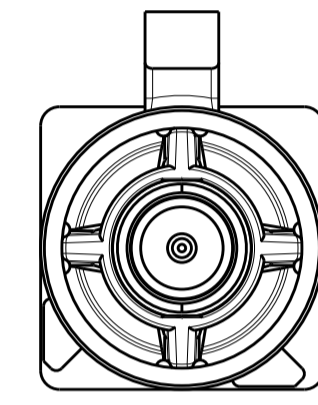
DETAIL I
SCALE 5:1



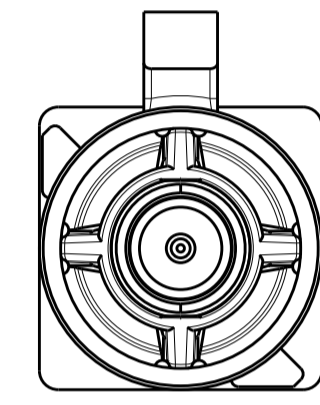
DETAIL K
SCALE 5:1



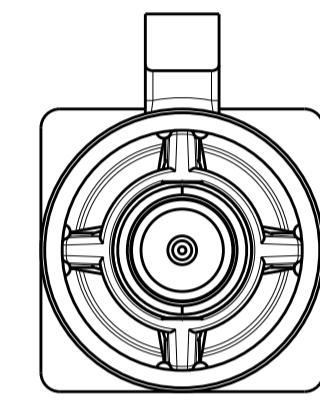
DETAIL L
SCALE 5:1



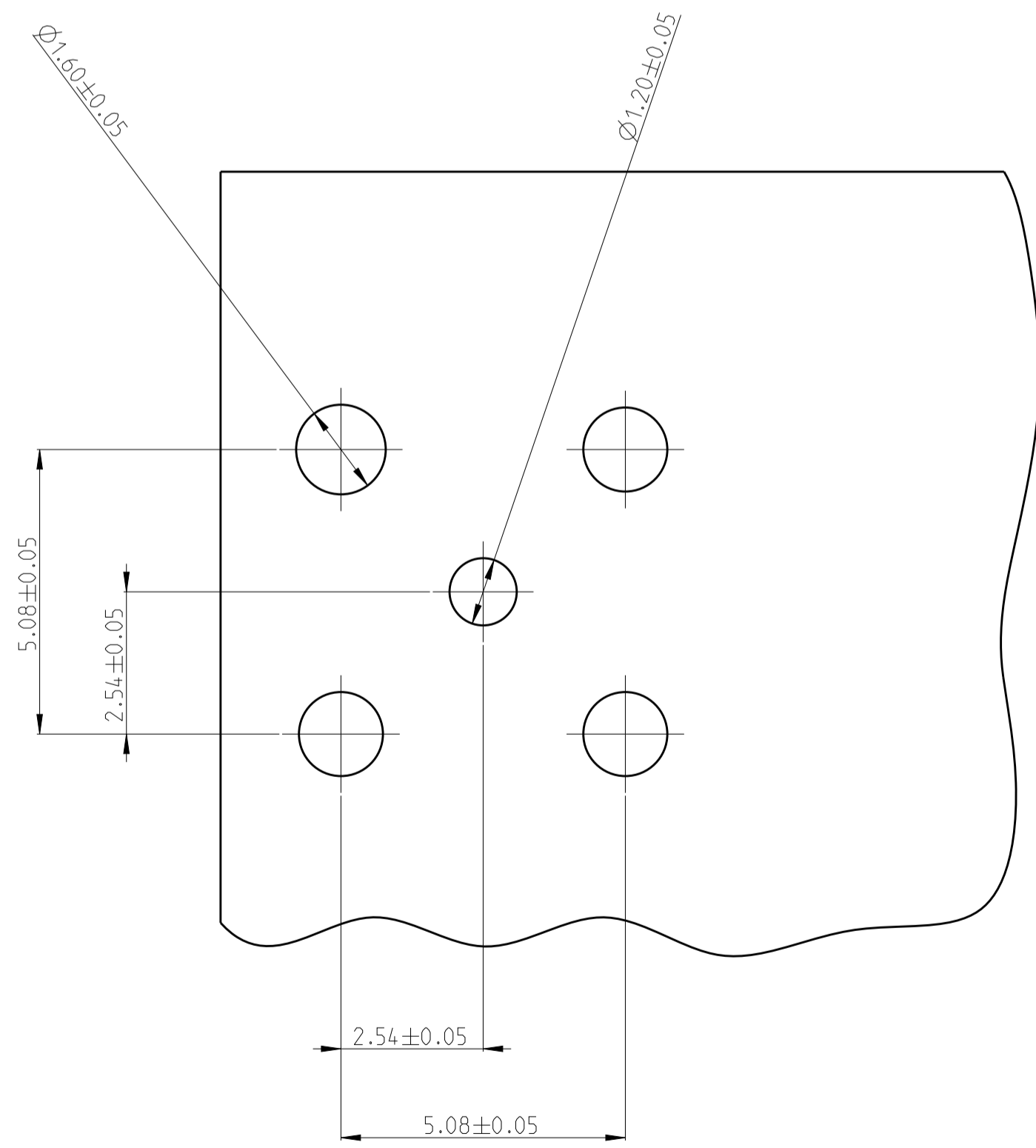
DETAIL M
SCALE 5:1



DETAIL N
SCALE 5:1



DETAIL Z
SCALE 5:1



⊕ 0.1 (ALL HOLES)
RECOMMEND PCB LAYOUT

THIS DRAWING IS A CONTROLLED DOCUMENT.		DWN: D.ZHU 16MAR2018	
DIMENSIONS: mm		CHK: C.PAN 27APR2018	
TOLERANCES UNLESS OTHERWISE SPECIFIED:		APVD: W.WU 23AUG2018	NAME: MALE ASSEMBLY, 1 POSITION, VERTICAL, PCB, FAKRA
0 PLC ±	1 PLC ±0.3	PRODUCT SPEC: 108-32058	SIZE: A1
2 PLC ±0.20	3 PLC ±	APPLICATION SPEC: 114-32108	CAGE CODE: 00779
4 PLC ±	ANGLES ±	WEIGHT: CUSTOMER DRAWING	DRAWING NO: 2333210
MATERIAL: -	FINISH: -	SCALE: 10:1	SHEET 2 OF 2
			REV: A1