

tyco

Electronics

TYCO ELECTRONICS CORPORATION
WWW.TYCOELECTRONICS.COM

AMP



tyco

Electronics

Flexible Cable Protection System
Catalog 1307244 Revised 1-04

AMP



Electronics

Product Facts

- For cables that require better protection
- Fittings that allow more reliable connections to be made
- Fittings that enhance their reliability under many extreme conditions of use in the manufacture of machinery and construction
- High quality complete systems which combine innovative technology with rapid ex-stock availability
- In conformity with the latest industry standards
- Recognized under the Component Program of Underwriters Laboratories Inc.  on applied products as marked.
- Certified by Canadian Standards Association on applied products as marked. 
- Certified by VDE on applied products as marked. 

Related Product Data

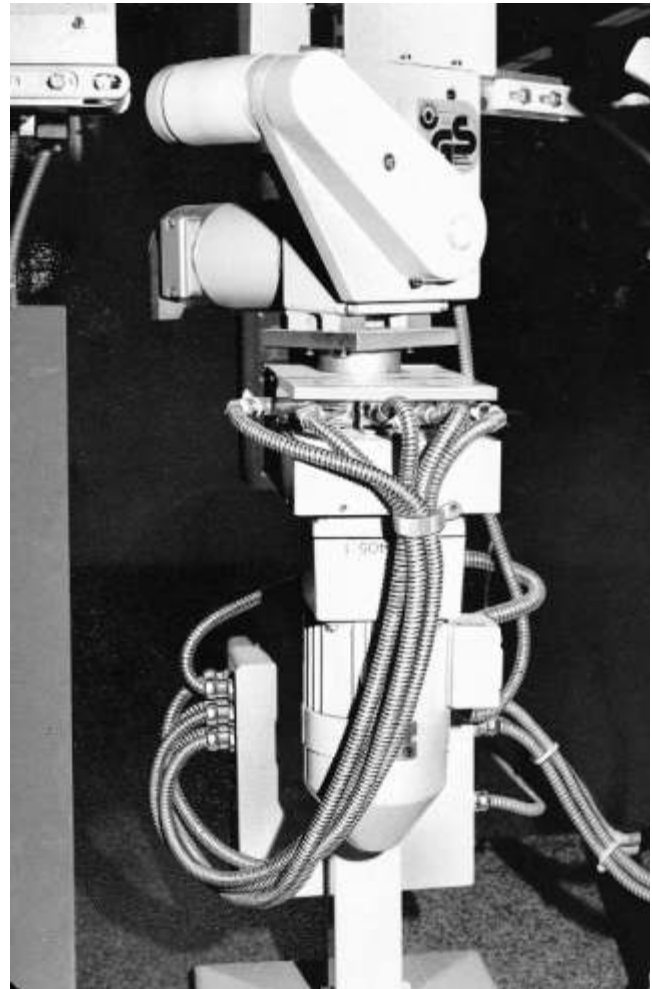
Catalog 124132
Products for Insulating and Bundling

Product Specifications

108-1696 *Flexagraff*
108-1696-1 *Rohrflex*
108-1696-2 *Airflex*

Application Specifications

114-18274 *Flexagraff-AS, -PU-AS, -ME-ASF*
114-18275 *Flexagraff-CU*
114-18276 *Airflex-KUW-PU*
114-18277 *Rohrflex-PA 6, Rohrflex-PA 6 S, Rohrflex-PA 12*



CPC/Flexa Selection Aid

CPC Shell Size	Flexa Connector Female	PA6 Flexa Tubing	Flexa Connector Male	Flexa R/A Connector Female	Flexa Counter Nut	Flat Sealing Washer
11	1-969807-2	969789-2	969803-2	969817-2	796260-2	796257-2
13	1-969809-3	969789-3	969803-3	969817-3	796260-3	796255-2
17	1-969811-4	969789-4	969803-4	969817-4	796260-5	796255-3
23	2-969813-5	969789-5	969803-5	969817-5	796260-6	796255-4

Table of Contents

Types of **FLEXAquick - System** and Types of **ROHRflex - Tubing** 4

Assembly Instructions **FLEXAquick** 5

Corrugated Plastic Tubing, **FLEXAquick-System**

ROHRflex-PA 6 (IP 68) 6

ROHRflex-PA 6 S (IP 68) 7

ROHRflex-PA 6-D 8

ROHRflex-PA 6-CSA 8

ROHRflex-Multi-PA 6 9

ROHRflex-PA 12 (IP 68) 9

Corrugated Plastic Tubing Connections

RQG-P (IP 68) 10

RQG-M (IP 67) 11

RQG-N (IP 67) 12

RQG1-P (IP 66) 13

RQGC-N (IP 67) 14

RQG-CTG 15

RQW-P (IP 67) 16

RQW-M (IP 67) 17

RQW1-P (IP 65) 18

RQW-N (IP 67) 19

RQW-CTG 20

RQWC-N (IP 67) 21

RQG2-U (IP 67) 22

RQG3-U (IP 66) 23

RQGZ-P (IP 67) 24

RQGM-P 25

RQGM2-P 25

RQB1-45 26

RQT (IP 67) 27

RQK (IP 67) 28

RQY (IP 67) 29, 30

Accessories

FR-P and FR-M 31

FR-U and FR-N/C 32

OR-P, GM-P and GM-M 33

GMK-P, GMK-N and GM-N 34

RQE (End Cap) (IP 67) 35

 Tubing Clamp 36

Application Tooling 37-39

Protective Metal Conduits

FLEXAgraff-AS (IP 40) 40

FLEXAgraff-CU (IP 40) 41

Protective Metal Conduits, Liquid Tight

FLEXAgraff-PU-AS (IP 68) 42

FLEXAgraff-ME-ASF 43

SPR-ME-ASF (IP 68) 44

Protective Plastic Conduits

AIRflex-KUW-PU (IP 68) 45

Protective Metal Conduit, with PVC Sheathing

SPR-PVC-AS 46

SPR-EDU-AS 46

Connections with Ferrules

US-P (IP 40 – IP66) 47-49

USW-P (IP 40 – IP66) 50, 51

EW 45-P 52

USK-P (IP 65) 53

EE 54

Chemical Resistance of Plastic Materials 55, 56

Part Number Index 57

Need more information?

Call Technical Support at 1-800-522-6752.

Technical Support is staffed with specialists well versed in all Tyco Electronics products. They can provide you with:

- Technical support
- Catalogs
- Technical Documents
- Product Samples
- Tyco Electronics Authorized Distributor Locations

© Copyright 1998, 2000 and 2003 by Tyco Electronics. All Rights Reserved.

AMP & TYCO are trademarks.

AIRflex, FLEXAgraff, FLEXAquick, ROHRflex are trademarks of FLEXA GmbH.

Megolon is a registered trademark of Rotunda PLC

Santoprene is a registered trademark of Advanced Elastomer Systems, L.P.

TEFLON is a trademark of E.I. Du Pont De Nemours and Company.

Types of FLEXAquick-System and Types of ROHRflex-Tubing

Types of FLEXAquick - System

* dash characterizes connector thread / flange	P	— PG - thread
	M	— Metric thread
	F	— Flange connection
	N	— NPT - thread
	U	— UNEF - thread
	C	—CTG / gas - thread
	S	— plug-type connection
	1	— conically sealing
	2	— inner thread
	3	— inner thread and conically sealing
(combinations possible)	Z	— strain relief
	M	— metal housing
	C	— CSA - tubing dimension
	K	— plastic housing with metal thread
	E	— EMC-insert
	G	— Straight type
	W	— Elbow type
	Y	— Y - type connector
	E	— End cap
	S	— clamp
	D	— Cover for clamp
	V	— Connecting element
	H	— top hat rail clip
	F	— Flange connection
	RQ	— ROHRFLEXquick

Types of ROHRflex- tubing (combinations possible)

Execution:	CSA	— CSA conformal
	CU	— with copper wire braiding
	D	— thick-walled
	G	— slitted
Material:	PA6	— Polyamide 6, V0 according UL 94
	PA6-V	— Polyamide 6, V2 according UL 94
	PA6-S	— Polyamide 6, HB according UL 94
	PA 12	— Polyamide 12
	PP	— Polypropylene
	PE	— Polyethylene
Type of Hose:	ROHRflex	— Corrugated tubing

Assembly Instructions FLEXAquick

Please note the following in order to attain protective System IP 67 acc. to EN 60529/IEC 529

Parting of protective System

Cut the corrugated tubing **ROHRflex-PA** with a knife in the valley of a wave.

More than one wave should not be passed while cutting the tubing.

Assembly

Tubing and screw connection must be assembled to the cutting tubing side.

Push the connector into the tubing until it cannot snap-in any longer and the connector can only be turned with power.

The relieved corrugated tubing pushes the claws of the snap-in-sleeve into the valley of the wave, this means an exact closing of the connection.



Simply push in.

Dismounting

Press the ring of the snap-in-sleeve to the connector case, then pull the tubing out or the connector from the tubing.

The connection is ready for use again.



Quick disconnect without tools.
Press ring to the housing and pull off.



Corrugated Plastic Tubing, FLEXAquick

Performance Characteristics

Corrugated all-plastic tubing,
UL-File-No. E86359

Construction

Inside and outside corrugated all-plastic tubing.

Material

High-quality plastic (PA).

Properties

Air- and liquid-tight, oil resistant up to +80°C, benzene resistant, more resistant to acids and solvents, ozone resistant, free of silicon, cadmium and halogen, self extinguishing and flame retarding.

V O according UL 94

For favorable material properties of the polyamide, we recommend storage of **ROHRflex** tubings under the following conditions:

Storing temperature: +20°C ±5°C
Air humidity: 55 up to 75%

Protective system

IP 68 acc. EN 60529

Temperature range

From approx. -40°C up to approx. +115°C, temporarily withstands temperatures up to approx. +150°C

Application

Installation tubing for protective insulating electrical installations. Suited acc. to the application rules of DIN EN 60204 in the machine and plant construction.

Color

Grey and black

Delivery lengths

25m and 50m depending on dimension, straightly measured.
Also slitted deliverable.

Comments

UL recognized components "Yellow card" on inquiry.

Related Product Data

Application Tooling — Page 37

ROHRflex-PA 6 (IP 68)



Trade Size*** Tubing Outer-Ø	Dimension Inner-Ø x Outer-Ø mm Approx.	ROHRflex- PA 6 (Grey) Part No.	ROHRflex- PA 6 (Black) Part No.	Bending Radius mm ±10%	Weight kg/m ±10%	Minimum Package Size*	Ring Size in Ft.
0.39 10.0	6.5 x 10.0	969790-1	969789-1	13	0.018	50m	164'
0.51 13.0	10.0 x 13.0	969790-2**	969789-2**	20	0.025	50m	164'
0.62 15.8	12.0 x 15.8	969790-3**	969789-3**	35	0.037	50m	164'
0.83 21.2	16.5 x 21.2	969790-4**	969789-4**	45	0.056	50m	164'
1.12 28.5	23.0 x 28.5	969790-5**	969789-5**	55	0.090	50m	164'
1.35 34.5	29.0 x 34.5	969790-6**	969789-6**	65	0.126	25m	82'
1.67 42.5	36.0 x 42.5	969790-7	969789-7	90	0.187	25m	82'
2.14 54.5	48.0 x 54.4	969790-8	969789-8	100	0.225	25m	82'
0.73 18.5	14.3 x 18.2	969790-9	969789-9	40	0.050	50m	164'

*20 Rings of specified length

**GGVS certified

***Advice: For appropriate tubing/screw connecting combinations choose the same trade size AD (tubing outer-Ø).

Notes: 1. Certification from KEMA, affirming that **ROHRflex-PA**-corrugated hoses are suitable for wiring of machines that are exported to Canada.

According to DB-requirements DIN 5510 part 2.

London Underground laboratory (LUL) licensed.

ISSEP proved according to NFF 16101 and 16102.

2. For quantities less than minimums, contact Tyco Electronics.

Corrugated Plastic Tubing, FLEXAquick (Continued)

Performance Characteristics

Corrugated all-plastic tubing,
UL-File-No. E86359/PA 6-S

Construction

Inside and outside corrugated all-plastic tubing.

Material

High-quality plastic (PA).

Properties

Air- and liquid-tight, oil resistant up to +80°C, benzine resistant, more resistant to acids and solvents, ozone resistant, free of silicon, cadmium and halogen, flame-retarding. **HB/V2 according UL 94.** For favorable material properties of the polyamide, we recommend storage of **ROHRflex** tubing under the following conditions: Storing temperature: +20°C ± 5°C Air humidity: 55 up to 75%

Protective system

IP 68 acc. EN 60529

Temperature range

From approx. -50°C up to approx. +115°C, temporarily withstands temperatures up to approx. +150°C

Application

Installation tubing for protective insulating electrical installations. Suited acc. to the application rules of DIN EN 60204 in the machine and plant construction.

Color

Grey and black

Delivery lengths

25m and 50m depending on dimension, straightly measured.

Comment

UL recognized components "Yellow card" on inquiry.

Related Product Data

Application Tooling — Page 37

ROHRflex-PA 6-S (IP 68)



Trade Size** Tubing Outer-Ø AD	Dimension Inner-Ø x Outer-Ø mm Approx.	ROHRflex- PA 6-S (Grey) Part No.	ROHRflex- PA 6-S (Black) Part No.	Bending Radius mm ± 10%	Weight kg/m ± 10%	Minimum Package Size*	Ring Size in Ft.
0.39 10.0	6.5 x 10.0	2-969791-1	969791-1	13	0.020	50m	164'
0.51 13.0	10.0 x 13.0	2-969791-2	969791-2	20	0.024	50m	164'
0.62 15.8	12.0 x 15.8	2-969791-3	969791-3	35	0.034	50m	164'
0.83 21.2	16.5 x 21.2	2-969791-4	969791-4	45	0.056	50m	164'
1.12 28.5	23.0 x 28.5	2-969791-5	969791-5	55	0.090	50m	164'
1.35 34.5	29.0 x 34.5	2-969791-6	969791-6	65	0.120	25m	82'
1.67 42.5	36.0 x 42.5	2-969791-7	969791-7	90	0.165	25m	82'
2.14 54.5	48.0 x 54.4	2-969791-8	969791-8	100	0.225	25m	82'
0.73 18.5	14.3 x 18.2	2-969791-9	969791-9	40	0.050	50m	164'

*20 Rings of specified length.

**Advice: For appropriate tubing/screw connecting combinations choose the same trade size AD (tubing outer-Ø).

Corrugated Plastic Tubing, FLEXAquick (Continued)

Performance

Characteristics

Corrugated all-plastic tubing.

Construction

Inside and outside corrugated all-plastic tubing.

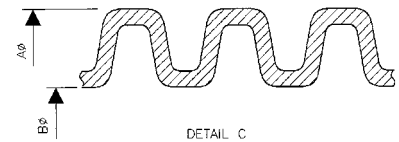
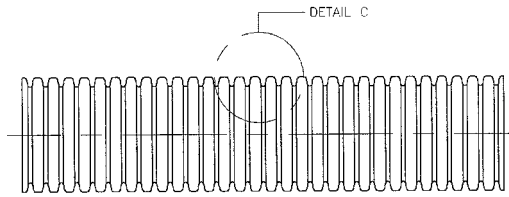
Material

High-quality plastic (PA).

Delivery lengths

25m and 50m depending on dimension, straightly measured.

ROHRflex-PA 6-D



Trade Size* Tubing Outer-Ø AD	Dimension Inner-Ø x Outer-Ø mm Approx.	ROHRflex- PA 6-D (Grey) Part No.	ROHRflex- PA 6-D (Black) Part No.	Bending Radius mm ±10%	Weight kg/m ±10%	Minimum Package Size
0.39 10.0	6.5 x 10.0	796790-1	2-796790-1	15	0.025	50m
0.51 13.0	9.5 x 13.0	796790-2	2-796790-2	25	0.035	50m
0.62 15.8	11.5 x 15.8	796790-3	2-796790-3	35	0.050	50m
0.73 18.5	13.8 x 18.2	796790-4	2-796790-4	40	0.050	50m
0.83 21.2	16.0 x 21.2	796790-5	2-796790-5	50	0.082	50m
1.12 28.5	22.0 x 28.5	796790-6	2-796790-6	60	0.115	50m
1.35 34.5	28.4 x 34.5	796790-7	2-796790-7	70	0.155	25m
1.67 42.5	35.5 x 42.5	796790-8	2-796790-8	100	0.212	25m
2.14 54.5	47.0 x 54.5	796790-9	2-796790-9	110	0.260	25m

*Advice: For appropriate tubing/screw connecting combinations choose the same trade size AD (tubing outer-Ø).

Performance

Characteristics

Corrugated all-plastic tubing.

Construction

Inside and outside corrugated all-plastic tubing.

Material

High-quality plastic (PA).

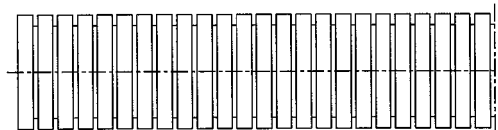
Color

Black

Delivery lengths

25m and 50m depending on dimension, straightly measured.

ROHRflex-PA 6-CSA



Trade Size*		Dimension Inner-Ø x Outer-Ø mm Approx.	ROHRflex- PA 6-D Part No.	Bending Radius mm ±10%	Weight kg/m ±10%	Delivery Lengths In Rings
Tubing Outer-Ø AD	NPT					
0.51 13.0	1/4"	9.5 x 13.0	796472-1	15	0.030	50m
0.62 15.8	5/16"	11.5 x 15.8	796472-2	25	0.050	50m
0.70 17.8	3/8"	12.9 x 17.8	796472-3	30	0.060	50m
0.86 21.8	1/2"	16.5 x 21.8	796472-4	40	0.090	50m
1.12 28.5	3/4"	22.0 x 28.5	796472-5	50	0.130	50m
1.35 34.4	1"	27.7 x 34.4	796472-6	60	0.160	25m
1.67 42.5	1 1/4"	35.5 x 42.5	796472-7	90	0.187	25m

*Advice: For appropriate tubing/screw connecting combinations choose the same trade size AD (tubing outer-Ø).

Corrugated Plastic Tubings, FLEXAquick (Continued)

Performance

Characteristics

Corrugated all-plastic tubing, highly flexible.

Construction

Inside and outside corrugated all-plastic tubing.

Material

High-quality plastic (PA).

Properties

High alternate bending strength, improved insulation properties due to lower absorption of humidity, air- and liquid-tight, oil and benzene resistant, ozone resistant, free of silicon, cadmium and halogen, self-extinguishing and flame retarding. **V2 (V0) according UL 94.** For favorable material properties of the polyamide, we recommend storage of **ROHRflex** tubings under the following conditions:
 Storing temperature: +20°C ± 5°C
 Air humidity: 55 up to 75%

Protective system

IP 68 acc. EN 60529

Temperature range

From approx. -50°C up to approx. +100°C, temporarily withstands temperatures up to approx. +150°C

Application

Installation tubing for protective insulating electrical installations. Suited acc. to the application rules of DIN EN 60204 in the machine and plant construction, especially for frequent reversed bending, i.e. robots.

Color

Grey and black

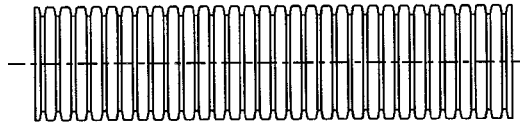
Delivery lengths

25m and 50m depending on dimension, straightly measured. Also slitted deliverable.

Related Product Data

Application Tooling — Page 37

ROHRflex-Multi-PA 6



Trade Size Tubing Outer-Ø AD	Dimension Inner-ØA x Outer-ØB mm Approx.	ROHRflex-Multi-PA 6 (Grey) Part No.	ROHRflex-Multi-PA 6 (Black) Part No.	Bending Radius mm	Approx. Weight kg/m	Minimum Package Size
2.76 70.0	66.5 x 79.2	2-796361-1	796361-1	170	0.69	10m
3.74 95.0	91.0 x 106.0	2-796361-2	796361-2	225	0.93	10m

ROHRflex-PA 12 (IP 68)



Trade Size** Tubing Outer-Ø AD	Dimension Inner-Ø x Outer-Ø mm Approx.	ROHRflex-PA 12 (Grey) Part No.	ROHRflex-PA 12 (Black) Part No.	Bending Radius mm ± 10%	Weight kg/m ± 10%	Minimum Package Size*	Size in Ft.
0.39 10.0	6.5 x 10.0	969792-1	969793-1	13	0.020	50m	164'
0.51 13.0	10.0 x 13.0	969792-2	969793-2	15	0.024	50m	164'
0.62 15.8	12.0 x 15.8	969792-3	969793-3	22	0.034	50m	164'
0.83 21.2	16.5 x 21.2	969792-4	969793-4	27	0.056	50m	164'
1.12 28.5	23.0 x 28.5	969792-5	969793-5	45	0.090	50m	164'
1.35 34.5	29.0 x 34.5	969792-6	969793-6	50	0.120	25m	82'
1.67 42.5	36.0 x 42.5	969792-7	969793-7	80	0.165	25m	82'
2.14 54.5	48.0 x 54.4	969792-8	969793-8	100	0.225	25m	82'
0.73 18.5	14.3 x 18.2	969792-9	969793-9	27	0.050	50m	164'

*20 Rings of specified length.

**Advice: For appropriate tubing/screw connecting combinations choose the same trade size AD (tubing outer-Ø).

Corrugated Plastic Tubing Connections

Performance Characteristics

One-piece plastic quick screw connection with PG-outer thread acc. to DIN 40430 for corrugated tubings as well as Reducing or Extending.

Construction

Screw connection case with hexagon wrench surface and fixed PG connecting thread DIN 40430 as well as an integrated snap-in sleeve and sealing.

Material

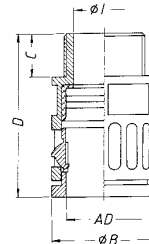
High-quality, impact resistant plastic material (PA)

Sealing: Santoprene®

Easy to assemble

Easy to assemble due to one-piece screw connection with push-in lock. Simple disconnect by displacing the snap-in sleeve. Smallest outer dimensions to be used under confined conditions. Smallest inner-Ø I ≥ tubing inside diameter.

RQG-P (IP 68)



Protective system

IP 68 acc. EN 60529

Temperature range

From approx. -30°C up to approx. +100°C

Application

For expert assembly, as protective insulating screw connection suited acc. to the application rules of DIN EN 60204 in the machine and plant construction.

Color

Grey and black

Suitable for tubing types

Corrugated tubing, type: **ROHRflex**.

Trade Size** Tubing Outer-Ø AD	RQG-P (Grey) Part Number	RQG-P (Black) Part Number	Thread DIN 40430 PG	Smallest Inner-Ø I	Largest Outer-Ø B	Length of Thread C	Total Length D	Wrench size across flats SW	Packet/ Pieces	Weight kg/100 p. Approx.
0.39 10.0	969804-1	969803-1	7	7.0	17.0	10.0	32.5	15.5	50	0.35
0.39 10.0	969832-1	969831-1	9	7.0	18.5	10.0	32.5	15.5	50	0.35
0.39 10.0	1-969832-1	1-969831-1	11	7.0	21.0	10.0	32.5	15.5	50	0.40
0.39 10.0	3-969832-1	3-969831-1	13.5	7.0	23.0	10.0	32.5	15.5	25	0.45
0.51 13.0	969834-2	969833-2	7	8.0	20.0	10.0	35.0	18.0	50	0.45
0.51 13.0	969804-2*	969803-2*	9	10.0	20.0	10.0	35.0	18.0	50	0.45
0.51 13.0	2-969832-2	2-969831-2	11	10.0	21.0	10.0	35.0	18.0	50	0.50
0.51 13.0	4-969832-2	4-969831-2	13.5	10.0	23.0	10.0	35.0	18.0	25	0.50
0.62 15.8	969804-3*	969803-3*	11	12.5	23.0	10.0	37.0	21.0	50	0.60
0.62 15.8	5-969832-3	5-969831-3	13.5	12.5	23.0	10.0	37.0	21.0	25	0.60
0.83 21.2	969834-4	969833-4	13.5	15.4	29.5	12.0	43.5	27.0	10	0.90
0.83 21.2	969804-4*	969803-4*	16	17.0	29.5	12.0	43.5	27.0	50	1.00
1.12 28.5	969834-5	969833-5	16	17.0	37.0	12.0	46.0	34.0	10	1.50
1.12 28.5	969804-5*	969803-5*	21	23.5	37.0	12.0	46.0	34.0	25	1.50
1.35 34.5	969804-6*	969803-6*	29	30.5	44.0	12.0	48.0	40.0	25	2.20
1.67 42.5	969804-7	969803-7	36	36.5	51.5	11.5	50.5	48.0	25	3.10
2.14 54.5	969804-8	969803-8	48	48.5	65.5	14.5	54.0	59.0	10	4.50

*GGVS certified

**Advice: For appropriate tubing/screw connecting combinations choose the same trade size AD (tubing outer-Ø).

Corrugated Plastic Tubing Connections (Continued)

Performance Characteristics

One-piece plastic quick screw connection with metric ISO thread acc. EN 60423 for corrugated tubings.

Construction

Screw connection case with hexagon wrench surface and fixed PG connecting thread DIN 40430 as well as an integrated snap-in sleeve and sealing.

Material

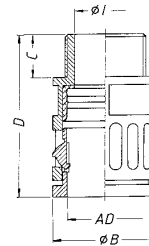
High-quality, impact resistant plastic material (PA)

Sealing: Santoprene®

Easy to assemble

Easy to assemble due to one-piece screw connection with push-in lock. Simple disconnect by displacing the snap-in sleeve. Smallest outer dimensions to be used under confined conditions. Smallest inner-Ø ≥ tubing inside diameter.

RQG-M (IP 67)



Protective system

IP 67 acc. EN 60529

Temperature range

From approx. -30°C up to approx. +100°C

Application

For expert assembly, as protective insulating screw connection suited acc. to the application rules of DIN EN 60204 in the machine and plant construction.

Color

Grey and black

Suitable for tubing types

Corrugated tubing, type: **ROHRflex** — Pages 6-9

Trade Size** Tubing Outer-Ø AD	RQG-M (Grey) Part Number	RQG-M (Black) Part Number	Thread EN 60430 Metric	Smallest Inner-Ø I	Largest Outer-Ø B	Length of Thread C	Total Length D	Wrench size across flats	Packet/ Pieces	Weight kg/100 p. Approx.
0.39 10.0	2-796283-1	796283-1	10 x 1.0	6.5	17.0	12	34.5	15.5	50	0.40
0.51 13.0	2-796283-2*	796283-2*	12 x 1.5	8.0	20.0	12	37.0	18.0	50	0.45
0.51 13.0	2-796283-3	796283-3*	16 x 1.5	10.0	20.0	12	37.0	18.0	50	0.50
0.62 15.8	2-796283-4*	796283-4*	16 x 1.5	12.0	23.0	12	39.0	21.0	50	0.60
0.62 15.8	2-796283-5	796283-5*	20 x 1.5	12.0	23.0	13	39.0	21.0	50	0.70
0.83 21.2	2-796283-6*	796283-6*	20 x 1.5	16.0	29.5	13	44.5	27.0	50	1.00
1.12 28.5	2-796283-7*	796283-7*	25 x 1.5	20.5	37.0	13	47.0	34.0	25	1.40
1.35 34.5	2-796283-8*	796283-8*	32 x 1.5	27.5	44.0	15	51.0	40.0	25	2.20
1.67 42.5	2-796283-9	796283-9	40 x 1.5	35.0	51.5	15	53.5	48.0	25	2.80
2.14 54.5	3-796283-0	1-796283-0	50 x 1.5	45.0	65.5	16	55.0	59.0	10	3.80
0.39 10.0	—	1-796283-1	12 x 1.0	6.5	17.0	12	34.5	15.5	50	0.40

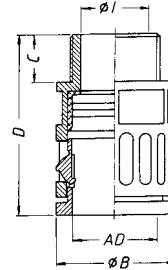
*GGVS certified

**Advice: For appropriate tubing/screw connecting combinations choose the same trade size AD (tubing outer-Ø).

Corrugated Plastic Tubing Connections (Continued)

Plastic quick screw connection with NPT-thread.

RQG-N
(IP 67)



Trade Size** Tubing Outer-Ø AD	RQG-N (Black) Part Number	Thread NPT	Smallest Inner-Ø I	Largest Outer-Ø B	Length of Thread C	Total Length D	Wrench size across flats	Packet/ Pieces	Weight kg/100 p. Approx.
0.39 10.0	796253-1	1/4	7.0	17.0	11.5	34.0	15.5	50	0.35
0.51 13.0	796253-2*	1/4	10.0	20.0	12	37.0	18.0	50	0.40
0.51 13.0	796253-3*	3/8	10.0	20.0	12	37.0	18.0	50	0.45
0.62 15.8	796253-4*	3/8	12.5	23.0	12	39.0	21.0	50	0.60
0.62 15.8	796253-5*	1/2	12.5	27.0	12	39.0	21.0	50	0.70
0.83 21.2	796253-6*	1/2	17.0	29.5	12	43.5	27.0	50	1.00
1.12 28.5	796253-7*	3/4	21.0	37.0	14	47.5	34.0	25	1.40
1.35 34.5	796253-8*	1	27.5	44.0	16	52.0	40.0	25	2.20
1.67 42.5	796253-9	1 1/4	36.5	52.0	18	56.5	49.0	25	3.10
1.67 42.5	1-796253-0	1 1/2	36.5	55.9	18	56.5	49.0	25	3.50
2.14 54.5	1-796253-1	1 1/2	48.5	64.0	18	57.0	60.0	10	4.20
2.14 54.5	1-796253-2	2	48.5	65.0	21	60.0	60.0	10	4.50

*GGVS certified

**Advice: For appropriate tubing/screw connecting combinations choose the same trade size AD (tubing outer-Ø).

Corrugated Plastic Tubing Connections (Continued)

Performance Characteristics

One-piece plastic quick screw connection, conically sealing, with PG-thread acc. to DIN 40430 for corrugated tubings, as well as Reducing or Extending.

Construction

Screw connection case with hexagon wrench surface and fixed PG connecting thread DIN 40430 with conic sealing case.

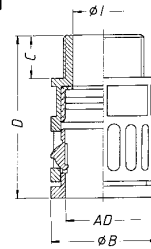
Material

High-quality, impact resistant plastic material (PA).

Easy to assemble

Easy to assemble due to one-piece screw connection with push-in lock. Simple disconnect by displacing the snap-in sleeve. Smallest outer dimensions to be used under confined conditions. Smallest inner-Ø ≥ tubing inside diameter.

RQG1-P (IP 66)



Protective system

IP 66 acc. EN 60529

Temperature range

From approx. -30°C up to approx. +100°C.

Application

For expert assembly, as protective insulating screw connection suited acc. to the application rules of DIN EN 60204 in the machine and plant construction.

Color

Grey and black

Suitable for tubing types

Corrugated tubing, type: **ROHR //ex.**

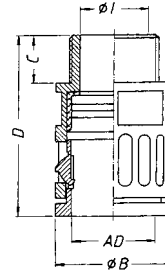
Trade Size* Tubing Outer-Ø AD	RQG1-P (Grey) Part Number	RQG1-P (Black) Part Number	Thread DIN 40430 PG	Smallest Inner-Ø I	Largest Outer-Ø B	Length of Thread C	Total Length D	Wrench size across flats SW	Packet/ Pieces	Weight kg/100 p. Approx.
0.39 10.0	969806-1	969805-1	7	7.0	17.0	10	32.5	15.5	50	0.35
0.39 10.0	1-969806-0	3-969806-0	9	7.0	18.5	10	32.5	15.5	50	0.35
0.39 10.0	1-969806-1	3-969806-1	11	7.0	21.0	10	32.5	15.5	50	0.40
0.39 10.0	1-969806-2	3-969806-2	13.5	7.0	23.0	10	32.5	15.5	25	0.45
0.51 13.0	1-969806-3	3-969806-3	7	8.0	20.0	10	35.0	18.0	50	0.45
0.51 13.0	969806-2	969805-2	9	10.0	20.0	10	35.0	18.0	50	0.45
0.51 13.0	1-969806-4	3-969806-4	11	10.0	21.0	10	35.0	18.0	50	0.50
0.51 13.0	1-969806-5	3-969806-5	13.5	10.0	23.0	10	35.0	18.0	25	0.50
0.62 15.8	969806-3	969805-3	11	12.5	23.0	10	37.0	21.0	50	0.55
0.62 15.8	1-969806-6	3-969806-6	13.5	12.5	23.0	10	37.0	21.0	25	0.60
0.62 15.8	1-969806-7	3-969806-7	16	12.5	26.5	10	37.0	21.0	25	0.65
0.72 18.5	969806-9	2-969806-9	13.5	13.5	25.5	11	40.0	24.0	50	0.80
0.83 21.2	1-969806-8	3-969806-8	13.5	15.4	29.5	12	43.5	27.0	10	0.90
0.83 21.2	969806-4	969805-4	16	17.0	29.5	12	43.5	27.0	50	1.00
1.12 28.5	1-969806-9	3-969806-9	16	17.0	37.0	12	46.0	34.0	10	1.50
1.12 28.5	969806-5	969805-5	21	23.5	37.0	12	46.0	34.0	25	1.40
1.35 34.5	969806-6	969805-6	29	30.5	44.0	12	48.0	40.0	25	2.20
1.67 42.5	969806-7	969805-7	36	36.5	52.0	12	50.5	49.0	25	2.95
2.14 54.5	969806-8	969805-8	48	48.5	64.0	15	54.0	60.0	10	4.30

*Advice: For appropriate tubing/screw connecting combinations choose the same trade size AD (tubing outer-Ø).

Corrugated Plastic Tubing Connections (Continued)

Plastic quick screw connection with NPT-thread.

RQG-N
(IP 67)



Trade Size** Outer-Ø AD	RQG-N (Grey) Part Number	RQG-N (Black) Part Number	Thread NPT	Smallest Inner-Ø I	Largest Outer-Ø B	Length of Thread C	Total Length D	Wrench size across flats SW	Packet/ Pieces	Weight kg/100 p. Approx.
0.39 10.0	2-796253-1	796253-1	1/4"	7.0	17.0	11.5	34.0	15.5	50	0.35
0.51 13.0	2-796253-2	796253-2	1/4"	9.5	20.0	12.0	37.0	18.0	50	0.40
0.51 13.0	2-796253-3	796253-3	3/8"	10.0	20.0	12.0	37.0	18.0	50	0.45
0.62 15.8	2-796253-4	796253-4	3/8"	11.5	20.0	12.0	37.0	18.0	50	0.45
0.62 15.8	2-796253-5	796253-5	1/2"	12.5	27.0	12.0	39.0	21.0	50	0.70
0.83 21.2	2-796253-6	796253-6	1/2"	17.0	29.5	12.0	43.5	27.0	50	1.00
0.70 17.8	—	5020038212*	3/8"	12.5	26.0	12.0	39.5	24.0	50	0.80
0.70 17.8	—	1-796253-3	1/2"	16.0	29.5	13.0	38.5	27.0	50	1.00
0.86 21.8	—	1-796253-4	1/2"	16.0	29.5	13.0	43.5	27.0	50	1.00
1.12 28.5	2-796253-9	796253-7	3/4"	21.0	37.0	14.0	47.5	34.0	25	1.40
1.35 34.4	3-796253-0	796253-8	1"	27.5	44.0	16.0	52.0	40.0	25	2.20
1.67 42.5	3-796253-1	796253-9	1 1/4"	36.5	52.0	18.0	56.5	49.0	25	3.10
1.67 42.5	3-796253-2	1-796253-0	1 1/2"	36.5	55.0	18.0	56.5	49.0	25	3.50
2.15 54.5	—	1-796253-1	1 1/2"	48.5	64.0	18.0	57.0	60.0	10	4.20
2.15 54.5	—	1-796253-2	2"	48.5	65.0	21.0	60.0	60.0	10	4.50

*Part No. on inquiry.

**Advice: For appropriate tubing/screw connecting combinations choose the same trade size AD (tubing outer-Ø).

Corrugated Plastic Tubing Connections (Continued)

Performance

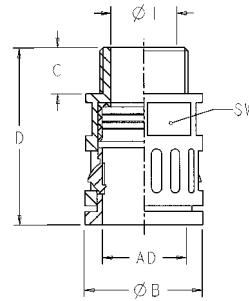
Characteristics

Plastic straight connector with CTG thread.

Color

Black

RQG-CTG



Trade Size* Outer-Ø AD	RQG-CTG Part Number	Thread CTG	Thread Whitworth G	Smallest Inner-Ø I	Largest Outer-Ø B	Length of Thread C	Total Length D	Hex Width SW	Packet/ Pieces	Weight kg/100 p. Approx.
0.39 10.0	796808-1	—	1/4"	7.0	17.0	10.0	32.5	15.5	50	0.35
0.51 13.0	796808-2	—	1/4"	7.0	20.0	10.0	35.0	18.0	50	0.42
0.51 13.0	796808-3	—	3/8"	10.0	21.0	10.0	35.0	18.0	50	0.45
0.51 13.0	796808-4	G 16	1/2"	10.0	27.0	14.0	39.5	18.0	50	0.45
0.62 15.8	796808-5	—	3/8"	10.0	23.0	10.0	37.0	21.0	50	0.60
0.62 15.8	796808-6	G 16	1/2"	12.5	27.0	14.0	41.5	21.0	50	0.60
0.83 21.2	796808-7	G 16	1/2"	16.0	29.5	14.0	45.5	27.0	50	1.00
1.12 28.5	796808-8	G 22	3/4"	20.5	37.0	14.0	48.0	34.0	25	1.40
1.35 34.5	796808-9	G 28	1"	27.5	44.0	16.0	52.0	40.0	25	2.20
1.67 42.5	1-796808-0	G 36	1 1/4"	35.0	52.0	18.0	56.5	49.0	25	2.80
2.15 54.5	1-796808-1	—	1 1/2"	36.5	65.5	15.0	54.0	59.0	10	4.40
2.15 54.5	1-796808-2	G 54	2"	48.5	64.5	18.0	60.0	60.0	10	4.50

*Advice: For appropriate tubing/screw connecting combinations choose the same trade size AD (tubing outer-Ø).

Corrugated Plastic Tubing Connections (Continued)

Performance Characteristics

Plastic quick screw connection elbow with PG-outer thread acc. to DIN 40430.

Construction

Screw connection case, 90° elbow type/bend 90° and 45° with fixed thread as well as an integrated snap-in sleeve and sealing.

Material

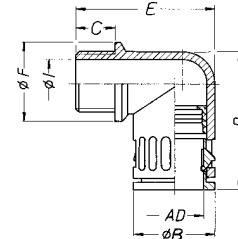
High quality, impact resistant plastic (PA). Sealing: TPE.

Properties

Rational tubing assembly due to one-piece screw connection with push-in lock. Simple dismounting by displacing the snap-in sleeve. Smallest outer dimensions to be used under confined conditions.

- Resistance against oil and benzene
- More resistant to acids and solvents
- Free of silicon, cadmium and halogen.

RQW-P
(IP 67)



Protective system

IP 67 acc. EN 60529/IEC 529

Temperature range

From approx. -30°C up to +100°C

Application

For expert assembly, as protective insulation screw connection suited acc. to the application rules of EN 60204 in the machine and plant construction.

Trade Size** Tubing Outer-Ø AD	RQW-P (Grey) Part Number	RQW-P (Black) Part Number	Thread DIN 40430 PG	Smallest Inner-Ø I	Largest Outer-Ø B	Length of Thread C	Total Length D	Total Height E	Connection Ø F	Packet/ Pieces	Weight kg/100 p. Approx.
0.39 10.0	969818-1	969817-1	7	8.5	17.0	10	33.5	32.0	16.0	50	0.40
0.51 13.0	969818-2*	969817-2*	9	12.0	20.0	10	36.0	34.0	20.0	50	0.60
0.51 13.0	1-969818-0	1-969817-0	11	14.0	20.0	10	39.0	34.0	23.0	50	0.75
0.51 13.0	1-969818-1	1-969817-1	13.5	15.5	20.0	10	40.0	35.0	25.0	50	0.80
0.62 15.8	969818-3	969817-3*	11	15.5	23.0	10	42.0	37.5	23.0	50	0.80
0.72 18.5	969818-9	969817-9	13.5	13.5	26.5	11	46.0	44.0	27.0	50	1.40
0.83 21.2	969818-4*	969817-4*	16	18.0	29.5	12	50.0	47.0	27.0	50	1.60
1.12 28.5	969818-5*	969817-5*	21	24.0	37.0	12	57.0	55.0	34.0	25	2.50
1.35 34.5	969818-6*	969817-6*	29	32.0	44.0	12	67.5	63.0	43.0	10	4.10
1.67 42.5	969818-7	969817-7	36	36.5	52.0	12	83.0	70.0	52.0	10	6.60
2.14 54.5	969818-8	969817-8	48	48.5	64.0	14	88.0	83.0	64.0	5	9.50

*GGVS Certified

**Advice: For appropriate tubing/screw connecting combinations choose the same trade size AD (tubing outer-Ø).

Corrugated Plastic Tubing Connections (Continued)

Performance Characteristics

Plastic quick screw connection elbow with metric ISO outer thread acc. to EN 60423.

Construction

Screw connection case, 90° elbow type/bend 90° and 45° with fixed thread as well as an integrated snap-in sleeve and sealing.

Material

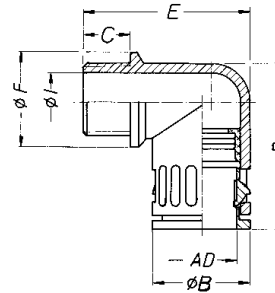
High quality, impact resistant plastic (PA). Sealing: TPE.

Properties

Rational tubing assembly due to one-piece screw connection with push-in lock. Simple dismounting by displacing the snap-in sleeve. Smallest outer dimensions to be used under confined conditions.

- Resistance against oil and benzene
- More resistant to acids and solvents
- Free of silicon, cadmium and halogen.

RQW-M (IP 67)



Protective system

IP 67 acc. EN 60529/IEC 529

Temperature range

From approx. -30°C up to +100°C

Application

For expert assembly, as protective insulation screw connection suited acc. to the application rules of EN 60204 in the machine and plant construction.

Trade Size** Tubing Outer-Ø AD	RQW-M (Grey) Part Number	RQW-M (Black) Part Number	Thread EN 60423 Metric	Smallest Inner-Ø I	Largest Outer-Ø B	Length of Thread C	Total Length D	Total Height E	Connection Ø F	Packet/ Pieces	Weight kg/100 p. Approx.
0.39 10.0	2-796284-1	796284-1	10 x 1.0	7.0	17.0	12	33.5	34.0	16.0	50	0.40
0.51 13.0	2-796284-2	796284-2	12 x 1.5	8.0	20.0	12	36.0	36.5	20.0	50	0.50
0.51 13.0	2-796284-3	796284-3*	16 x 1.5	12.0	20.0	12	36.0	36.5	20.0	50	0.80
0.62 15.8	2-796284-4	796284-4	16 x 1.5	12.0	23.0	12	42.0	40.5	23.0	50	0.90
0.62 15.8	2-796284-5	796284-5*	20 x 1.5	15.5	23.0	13	42.0	41.5	24.0	50	1.00
0.83 21.2	2-796284-6	796284-6	20 x 1.5	15.5	29.5	13	50.0	49.0	27.0	50	1.50
0.83 21.2	2-796284-7	796284-7*	25 x 1.5	18.0	29.5	13	50.0	49.0	29.5	50	1.60
1.12 28.5	2-796284-8	796284-8	25 x 1.5	18.0	37.0	13	57.0	57.0	34.0	25	2.50
1.12 28.5	2-796284-9	796284-9*	32 x 1.5	24.0	37.0	15	57.0	59.0	37.0	25	2.60
1.35 34.5	3-796284-0	1-796284-0	32 x 1.5	24.0	44.0	15	67.5	67.0	43.0	10	3.80
1.35 34.5	3-796284-1	1-796284-1*	40 x 1.5	32.0	44.0	15	67.5	67.0	45.0	10	4.00
1.67 42.5	3-796284-2	1-796284-2	40 x 1.5	32.0	52.0	15	83.0	74.5	52.0	10	6.40
1.67 42.5	3-796284-3	1-796284-3	50 x 1.5	39.0	52.0	16	83.0	75.5	55.0	10	6.60
2.14 54.5	3-796284-4	1-796284-4	50 x 1.5	39.0	64.0	16	88.0	86.5	64.0	5	9.00
2.14 54.5	3-796284-5	1-796284-5	63 x 1.5	53.0	64.0	16	88.0	86.5	68.0	5	9.40

*GGVS certified

**Advice: For appropriate tubing/screw connecting combinations choose the same trade size AD (tubing outer-Ø).

Corrugated Plastic Tubing Connections (Continued)

Performance Characteristics

Plastic quick screw connection elbow, conically sealing, with PG-outer thread acc. to DIN 40430.

Construction

Screw connection case, 90° elbow type and fixed as well as an integrated snap-in sleeve and conic seal case.

Material

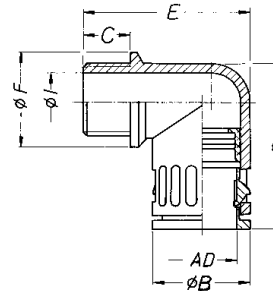
High quality, impact resistant plastic (PA).

Properties

Rational tubing assembly due to one-piece screw connection with push-in lock. Simple dismounting by displacing the snap-in sleeve. Smallest outer dimensions to be used under confined conditions.

- Resistance against oil and benzene
- More resistant to acids and solvents
- Free of silicon, cadmium and halogen.

RQW1-P
(IP 65)



Protective system

IP 65 acc. EN 60529/IEC 529

Temperature range

From approx. -30°C up to +100°C

Application

For expert assembly, as protective insulation screw connection suited acc. to the application rules of EN 60204 in machine and plant construction.

Trade Size** Tubing Outer-Ø	RQW1-P (Grey) Part Number	RQW1-P (Black) Part Number	Thread DIN 40430 PG	Smallest Inner-Ø I	Largest Outer-Ø B	Length of Thread C	Total Length D	Total Height E	Connection Ø F	Packet/ Pieces	Weight kg/100 p. Approx.
0.39 10.0	969820-1	5020050207*	7	8.5	17.0	10	33.5	32.0	16.0	50	0.40
0.51 13.0	969820-2	969819-2	9	12.0	20.0	10	36.0	34.0	20.0	50	0.60
0.62 15.8	969820-3	969819-3	11	15.5	23.0	10	42.0	37.5	23.0	50	0.80
0.72 18.5	969820-9	5020050213*	13.5	13.5	26.5	11	46.0	44.0	27.0	50	1.40
0.83 21.2	969820-4	969819-4	16	18.0	29.5	12	50.0	47.0	27.0	50	1.60
1.12 28.5	969820-5	969819-5	21	24.0	37.0	12	57.0	55.0	34.0	25	2.45
1.35 34.5	969820-6	969819-6	29	32.0	44.0	12	67.5	63.0	43.0	10	3.95
1.67 42.5	969820-7	969819-7	36	36.5	52.0	12	83.0	70.0	52.0	10	6.50
2.14 54.5	969820-8	969819-8	48	48.5	64.0	14	88.0	83.0	64.0	5	9.00

*Part No. on inquiry.

**Advice: For appropriate tubing/screw connecting combinations choose the same trade size AD (tubing outer-Ø).

Corrugated Plastic Tubing Connections (Continued)

Performance Characteristics

Plastic quick screw connection elbow with NPT-outer thread.

Construction

Screw connection case, 90° elbow type/bend 90° and 45° with fixed thread as well as an integrated snap-in sleeve and sealing.

Material

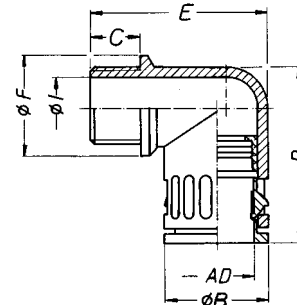
High quality, impact resistant plastic (PA). Sealing: TPE.

Properties

Rational tubing assembly due to one-piece screw connection with push-in lock. Simple dismounting by displacing the snap-in sleeve. Smallest outer dimensions to be used under confined conditions.

- Resistance against oil and benzene
- More resistant to acids and solvents
- Free of silicon, cadmium and halogen.

RQW-N
(IP 67)



Protective system

IP 67 acc. EN 60529/IEC 529

Temperature range

From approx. -30°C up to +100°C

Application

For expert assembly, as protective insulation screw connection suited acc. to the application rules of EN 60204 in the machine and plant construction.

Trade Size* Tubing Outer-Ø	RQW-N (Grey) Part Number	RQW-N (Black) Part Number	Thread NPT	Smallest Inner-Ø I	Largest Outer-Ø B	Length of Thread C	Total Length D	Total Height E	Connection Ø F	Packet/ Pieces	Weight kg/100 p. Approx.
0.39 10.0	2-796254-1	796254-1	1/4	8.5	17.0	10.0	33.5	32.0	16.0	50	0.40
0.51 13.0	2-796254-2	796254-2	1/4	10.0	20.0	11.5	36.0	36.0	20.0	50	0.60
0.62 15.8	2-796254-3	796254-3	3/8	12.5	23.0	12.0	42.0	40.5	23.0	50	0.80
0.62 15.8	2-796254-4	796254-4	1/2	16.0	26.0	12.0	42.0	40.5	26.0	50	1.10
0.83 21.2	2-796254-5	796254-5	1/2	16.0	29.5	12.0	50.0	47.0	27.0	50	1.60
1.12 28.5	2-796254-6	796254-6	3/4	21.0	37.0	14.0	57.5	56.0	34.0	25	2.80
1.35 34.5	2-796254-7	796254-7	1	28.0	44.0	16.0	67.5	63.0	43.0	10	5.60
1.67 42.5	2-796254-8	796254-8	1 1/4	36.5	52.0	18.0	83.0	76.0	52.0	10	5.10
1.67 42.5	2-796254-9	796254-9	1 1/2	36.5	54.0	18.0	83.0	76.0	54.0	10	5.50
2.14 54.5	3-796254-0	1-796254-0	1 1/2	48.5	64.0	18.0	88.0	87.0	64.0	5	6.70
2.14 54.5	3-796254-1	1-796254-1	2	48.5	66.0	21.0	88.0	90.0	66.0	5	7.00

*Advice: For appropriate tubing/screw connecting combinations choose the same trade size AD (tubing outer-Ø).

Corrugated Plastic Tubing Connections (Continued)

Performance

Characteristics

Plastic connection elbow with CTG thread.

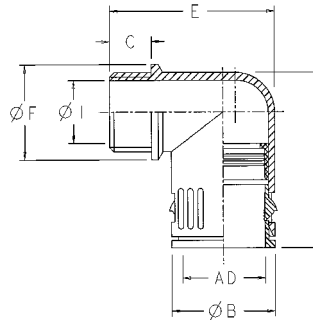
Material

High quality plastic (PA).

Color

Black

RQW-CTG



Trade Size* Tubing Outer-Ø	RQW-CTG Part Number	Thread CTG	Thread Whitworth G	Smallest Inner-Ø I	Largest Outer-Ø B	Length of Thread C	Total Length D	Total Height E	Flange Ø F	Packet/ Pieces	Weight kg/100 p. Approx.
0.51 13.0	796809-1	G 16	1/2"	16.5	20.0	14.0	36.0	40.0	27.0	50	0.80
0.62 15.8	796809-2	G 16	1/2"	16.5	23.0	14.0	42.0	43.0	27.0	50	1.00
0.83 21.2	796809-3	G 16	1/2"	16.5	29.5	14.0	50.0	49.0	27.0	50	1.60
1.12 28.5	796809-4	G 22	3/4"	21.5	37.5	14.0	57.0	57.0	34.0	25	2.60
1.35 34.5	796809-5	G 28	1"	28.5	44.0	16.0	67.5	66.5	43.0	10	4.00
1.67 42.5	796809-6	G 36	1 1/4"	36.0	52.0	18.0	83.0	76.0	52.0	10	6.60
2.14 54.5	796809-7	G 54	2"	54.5	64.0	21.0	88.0	89.5	64.0	5	9.40

*Advice: For appropriate tubing/screw connecting combinations choose the same trade size AD (tubing outer-Ø).

Corrugated Plastic Tubing Connections (Continued)

Performance Characteristics

One-piece plastic quick screw connection elbow, conically sealing, with PG-thread for corrugated tubings.

Construction

Screw connection case, 90° elbow type and fixed PG connecting thread DIN 40430, with conic sealing case.

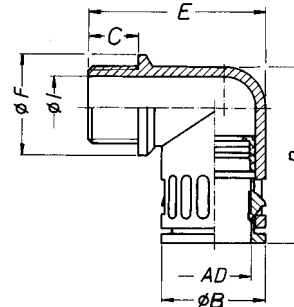
Material

High-quality, impact resistant plastic material (PA).

Easy to assemble

Easy to assemble due to one-piece screw connection with push-in lock. Simple disconnect by displacing the snap-in sleeve. Smallest outer dimensions to be used under confined conditions. Smallest inner-Ø \geq tubing inside diameter.

RQWC-N (IP 67)



Protective system

IP 67 acc. EN 60529

Temperature range

From approx. -30°C up to +100°C.

Application

For expert assembly, as protective insulating screw connection suited acc. to

the application rules of DIN EN 60204 in the machine and plant construction.

Color

Black

Suitable for tubing types

Corrugated tubing, type: **ROHRflex**.

Trade Size* Tubing Outer-Ø	RQWC-N (Black) Part Number	Thread NPT	Smallest Inner-Ø I (mm)	Largest Outer-Ø B	Length of Thread C	Total Length D	Total Height E	Connection Ø F	Packet/Pieces	Weight kg/100 p. Approx.
.051 13.0	796493-1	1/4	8.5	17.0	10.0	33.5	32.0	16.0	50	0.40
0.62 15.8	796493-2	3/8	10.0	20.0	11.5	36.0	36.0	20.0	50	0.60
0.70 17.8	796493-3	3/8	12.5	26.0	12.0	45.0	43.5	25.0	50	1.40
0.70 17.8	796493-4	1/2	16.0	29.5	13.0	50.0	46.5	27.0	50	1.60
0.85 21.8	796493-5	1/2	16.0	29.5	13.0	50.0	48.5	27.0	50	1.60
1.12 28.5	796493-6	3/4	21.0	37.0	14.0	57.5	56.0	34.0	25	2.80
1.35 34.4	796493-7	1	28.0	44.0	16.0	67.5	56.0	43.0	10	4.80
1.67 42.5	796493-8	1 1/4	16.0	29.5	12.0	50.0	47.0	27.0	10	1.60

*Advice: For appropriate tubing/screw connecting combinations choose the same trade size AD (tubing outer-Ø).

Corrugated Plastic Tubing Connections (Continued)

Performance

Characteristics

One-piece plastic quick screw connection with UNEF-*inner thread* for corrugated tubings.

Construction

Screw connection case with hexagon wrench surface fixed UNEF inner thread as well as an integrated snap-in sleeve and sealing.

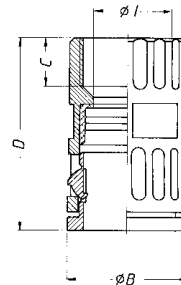
Material

High-quality, impact resistant plastic material (PA).
Sealing: Santoprene®

Easy to assemble

Easy to assemble due to one-piece screw connection with push-in lock. Simple

RQG2-U (IP 67)



disconnect by displacing the snap-in sleeve. Smallest outer dimensions to be used under confined conditions. Smallest inner- \varnothing \geq tubing inside diameter.

Protective system
IP 67 acc. EN 60529

Temperature range

From approx. -30°C up to $+100^{\circ}\text{C}$.

Application

For expert assembly, as protective insulating screw connection suited acc. to the application rules of DIN EN 60204 in the machine and plant construction.

Color

Grey and black

Suitable for tubing types

Corrugated tubing, type: **ROHRflex**.

Thread dimensions

Other UNEF thread dimensions on inquiry.

Trade Size** Tubing Outer- \varnothing AD	RQG2-U (Grey) Part Number	RQG2-U (Black) Part Number	Inner Thread UNEF	Smallest Inner- \varnothing I	Largest Outer- \varnothing B	Length of Thread C	Wrench Size Total Length D	Across Flats SW	Packet/ Pieces	Weight kg/100 p. Approx.
0.51 13.0	969808-2	969807-2	1/2" (0.500) - 28	10.0	20.0	8	36.6	18.0	50	0.50
0.51 13.0	1-969808-2	1-969807-2	5/8" (0.625) - 24	10.0	20.6	8	36.6	18.0	50	0.55
0.51 13.0	2-969808-2	2-969807-2	3/4" (0.750) - 20	10.0	23.0	9.5	38.5	18.0	50	0.60
0.62 15.8	969810-3	969809-3	5/8" (0.625) - 24	12.5	23.6	9.5	41.7	21.0	50	0.60
0.62 15.8	1-969810-3	1-969809-3	3/4" (0.750) - 20	12.5	23.6	9.5	41.7	21.0	50	0.65
0.62 15.8	3-969810-3	969807-4	15/16" (0.9375) - 20	12.5	30.0	9.5	45.5	21.0	50	0.95
0.62 15.8	2-969810-3	2-969809-3	1" (1.000) - 20	12.5	30.0	9.5	45.5	21.0	50	1.00
0.83 21.2	969812-5	969811-3	5/8" (0.625) - 24	12.5	30.1	9.5	50.5	27.0	50	1.10
0.83 21.2	969812-4	969811-4	7/8" (0.875) - 20	17.0	29.5	9.5	50.5	27.0	50	1.00
0.83 21.2	1-969812-4	1-969811-4	15/16" (0.9375) - 20	17.0	30.1	9.5	50.3	27.0	50	1.10
0.83 21.2	2-969812-4	2-969811-4	1" (1.000) - 20	17.0	30.1	9.5	50.3	27.0	50	1.10
0.83 21.2	3-969812-4	3-969811-4	1 3/16" (1.1875) - 18	17.0	34.6	9.5	52.3	27.0	50	1.40
0.83 21.2	5-969812-7	6-969811-4	1 3/8" (1.375) - 18	17.0	41.0	9.5	52.5	27.0	50	2.15
0.83 21.2	4-969812-4	4-969811-4	1 7/16" (1.4375) - 18	17.0	41.0	9.5	52.5	27.0	50	1.45
0.83 21.2	5-969812-4	5-969811-4	1 3/4" (1.750) - 18	17.0	49.0	9.5	52.5	27.0	50	1.50
1.12 28.5	4-969814-5	4-969813-7	15/16" (0.9375) - 20	17.0	37.0	9.5	52.5	34.0	25	1.30
1.12 28.5	5020047014*	5020047214*	1" (1.000) - 20	23.5	37.0	9.5	54.0	34.0	25	2.05
1.12 28.5	969814-5	969813-5	1 3/16" (1.1875) - 18	23.5	37.0	9.5	52.5	34.0	25	1.45
1.12 28.5	1-969814-5	1-969813-5	1" (1.000) - 20	23.5	37.0	9.5	54.0	34.0	25	1.40
1.12 28.5	2-969814-5	2-969813-5	1 3/8" (1.375) - 18	23.5	41.0	9.5	54.0	34.0	25	1.50
1.12 28.5	3-969814-5	3-969813-5	1 7/16" (1.4375) - 18	23.5	41.0	9.5	54.0	34.0	25	1.50
1.35 34.5	969816-6	969815-6	1 7/16" (1.4375) - 18	30.5	41.0	9.5	55.0	40.0	25	1.80
1.35 34.5	1-969816-6	1-969815-6	1 3/4" (1.750) - 18	30.5	49.0	9.5	56.0	40.0	25	2.55
1.35 34.5	2-969816-6	2-969815-6	2" (2.000) - 18	30.5	55.0	9.5	56.0	40.0	10	2.80
1.35 34.5	—	2-969815-9	1 3/8" (1.375) - 18	23.5	52.0	9.5	56.0	40.0	10	2.30

*Part No. on inquiry.

**Advice: For appropriate tubing/screw connecting combinations choose the same trade size AD (tubing outer- \varnothing).

Corrugated Plastic Tubing Connections (Continued)

Performance Characteristics

One-piece plastic quick screw connection, conically sealing, with UNEF-inner thread for corrugated tubings.

Construction

Screw connection case with hexagon wrench surface and fixed UNEF inner thread with conic sealing case.

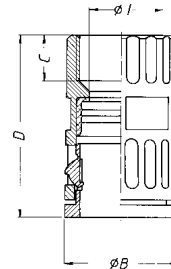
Material

High-quality, impact resistant plastic material (PA).

Easy to assemble

Easy to assemble due to one-piece screw connection with push-in lock. Simple

RQG3-U (IP 66)



disconnect by displacing the snap-in sleeve. Smallest outer dimensions to be used under confined conditions. Smallest inner-Ø I ≥ tubing inside diameter.

Protective system
IP 66 acc. EN 60529

Temperature range

From approx. -30°C up to +100°C.

Application

For expert assembly, as protective insulating screw connection suited acc. to the application rules of DIN EN 60204 in the machine and plant construction.

Color

Grey and black

Suitable for tubing types

Corrugated tubing, type: ROHRflex.

Thread dimensions

Other UNEF thread dimensions on inquiry.

Trade Size** Tubing Outer-Ø AD	RQG3-U (Grey) Part Number	RQG3-U (Black) Part Number	Inner Thread UNEF			Smallest Inner-Ø I	Largest Outer-Ø B	Length of Thread C	Total Length D	Wrench Size Across Flats SW	Packet/ Pieces	Weight kg/100 p. Approx.
0.51 13.0	969822-2	969821-2	1/2"	(0.500)	- 28	10.0	20.0	8	36.6	18.0	50	0.50
0.51 13.0	1-969822-2	1-969821-2	5/8"	(0.625)	- 24	10.0	20.6	8	36.6	18.0	50	0.55
0.51 13.0	2-969822-2	2-969821-2	3/4"	(0.750)	- 20	10.0	23.0	9.5	38.5	18.0	50	0.60
0.62 15.8	969824-3	969823-3	5/8"	(0.625)	- 24	12.5	23.6	9.5	41.7	21.0	50	0.60
0.62 15.8	1-969824-3	1-969823-3	3/4"	(0.750)	- 20	12.5	23.6	9.5	41.7	21.0	50	0.65
0.62 15.8	3-969824-3	5020054225*	15/16"	(0.9375)	- 20	12.5	30.0	9.5	45.5	21.0	50	0.95
0.62 15.8	2-969824-3	2-969823-3	1"	(1.000)	- 20	12.5	30.0	9.5	45.5	21.0	50	1.00
0.83 21.2	969826-3	969825-3	5/8"	(0.625)	- 24	12.5	30.1	9.5	50.5	27.0	50	1.10
0.83 21.2	969826-4	969825-4	7/8"	(0.875)	- 20	17.0	29.5	9.5	50.5	27.0	50	1.00
0.83 21.2	1-969826-4	1-969825-4	15/16"	(0.9375)	- 20	17.0	30.1	9.5	50.3	27.0	50	1.10
0.83 21.2	2-969826-4	2-969825-4	1"	(1.000)	- 20	17.0	30.1	9.5	50.3	27.0	50	1.10
0.83 21.2	3-969826-4	3-969825-4	1 3/16"	(1.1875)	- 18	17.0	34.6	9.5	52.3	27.0	50	1.40
0.83 21.2	6-969826-4	6-969825-4	1 3/8"	(1.375)	- 18	17.0	41.0	9.5	52.5	27.0	50	1.42
0.83 21.2	4-969826-4	4-969825-4	1 7/16"	(1.4375)	- 18	17.0	41.0	9.5	52.5	27.0	50	1.45
0.83 21.2	5-969826-4	5-969825-4	1 3/4"	(1.750)	- 18	17.0	49.0	9.5	52.5	27.0	50	1.50
1.12 28.5	4-969828-3	4-969827-7	15/16"	(0.9375)	- 20	17.0	37.0	9.5	52.5	34.0	25	1.30
1.12 28.5	1-969828-5	1-969827-5	1"	(1.000)	- 20	23.5	37.0	9.5	54.0	34.0	25	1.40
1.12 28.5	969828-5	969827-5	1 3/16"	(1.1875)	- 18	23.5	37.0	9.5	52.5	34.0	25	1.45
1.12 28.5	2-969828-5	2-969827-5	1 3/8"	(1.375)	- 18	23.5	41.0	9.5	54.0	34.0	25	1.50
1.12 28.5	3-969828-5	3-969827-5	1 7/16"	(1.4375)	- 18	23.5	41.0	9.5	54.0	34.0	25	1.50
1.35 34.5	2-969830-9	2-969829-9	1 3/8"	(1.375)	- 18	23.5	44.0	9.5	56.0	40.0	10	2.80
1.35 34.5	969830-6	969829-6	1 7/16"	(1.4375)	- 18	30.5	41.0	9.5	55.0	40.0	25	1.80
1.35 34.5	1-969830-6	1-969829-6	1 3/4"	(1.750)	- 18	30.5	49.0	9.5	56.0	40.0	25	2.55
1.35 34.5	2-969830-6	2-969829-6	2"	(2.000)	- 18	30.5	55.0	9.5	56.0	40.0	10	2.80

*Part No. on inquiry.

**Advice: For appropriate tubing/screw connecting combinations choose the same trade size AD (tubing outer-Ø).

Corrugated Plastic Tubing Connections (Continued)

Performance Characteristics

One-piece plastic quick screw connection with PG-thread and additional strain relief for corrugated tubings.

Construction

Screw connection case with hexagon wrench surface fixed connecting thread DIN 40430 as well as an integrated snap-in sleeve, sealing and strain relief.

Material

High-quality, impact resistant plastic material (PA).

Sealing: Santoprene®

Easy to assemble

Easy to assemble due to one-piece screw connection with push-in lock. Simple disconnect by displacing the snap-in sleeve. Smallest inner-Ø I ≥ tubing inside diameter as well as cable clamp possibility in the indicated range.

Protective system

IP 67 acc. EN 60529/IEC 529

Temperature range

From approx. -30° C up to approx. +100° C.

Application

For expert assembly, as protective insulating screw connection suited acc. to the application rules of DIN EN 60204 in the machine and plant construction with possibility of cable strain relief.

Color

Grey and black

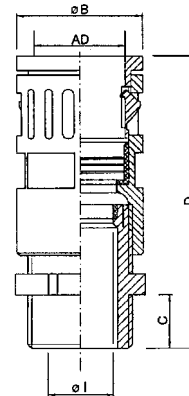
Suitable for tubing types

Corrugated tubing type:

ROHRflex

Other thread dimensions on inquiry.

RQGZ-P
(IP 67)



Trade Size* Tubing Outer-Ø AD	RQGZ-P (Grey) Part Number	RQGZ-P (Black) Part Number	Thread PG	Smallest Inner- Ø I	Largest Outer- Ø B	Length of Thread C	Total Length D	Wrench Size Across Flats SW	Packet/ Pieces	Weight kg/100 p. Approx.
0.39 10.0	969836-1	969835-1	7	7.0	17.0	8	51.0	16.0	20	0.80
0.51 13.0	969836-2	969835-2	9	8.0	20.0	8	53.0	18.0	20	1.00
0.62 15.8	969836-3	969835-3	11	10.0	23.0	8	59.0	21.0	20	1.30
0.62 15.8	969836-9	969835-9	13.5	12.0	27.0	8	59.0	21.0	20	1.40
0.72 18.5	1-969836-0	1-969835-0	13.5	12.0	27.0	8	59.0	24.0	20	1.60
0.83 21.2	1-969836-1	1-969835-1	13.5	12.0	29.5	8	70.0	27.0	10	1.90
0.83 21.2	969836-4	969835-4	16	14.0	29.5	10	72.0	27.0	10	1.70
1.12 28.5	969836-5	969835-5	21	18.0	37.0	11	82.0	34.0	10	2.4
1.35 34.5	969836-6	969835-6	29	25.0	44.0	12	85.0	40.0	10	4.2
1.67 42.5	969836-7	969835-7	36	32.0	52.0	13	106.0	49.0	10	10.0
2.14 54.5	969836-8	969835-8	48	44.0	64.0	14	112.0	60.0	10	13.0

***Advice:** For appropriate tubing/screw connecting combinations choose the same trade size AD (tubing outer-Ø).
Note: To ensure a high protection system between cable gland insert and screw connection housing it is necessary to use a sealing compound.

Corrugated Plastic Tubing Connections (Continued)

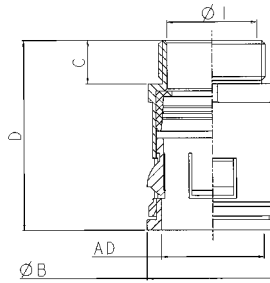
Performance Characteristics

Straight metal connection.

Material

Brass. Finish: Nickel.

RQGM-P



Trade Size Tubing Outer-Ø AD	RQGM-P Part Number	Thread PG	Smallest Inner-Ø I	Largest Outer-Ø B	Length of Thread C	Total Length D	Hex Width SW	Packet/Pieces	Weight kg/100 p. Approx.
0.39 10.0	969837-1	7	9.5	17.0	7.0	28.5	15.0	50	0.80
0.51 13.0	969837-2	9	11.5	21.0	7.0	30.5	19.0	50	1.20
0.62 15.8	969837-3	11	15.5	24.5	7.5	33.5	23.0	50	2.00
0.83 21.2	969837-4	16	19.0	29.0	7.5	38.5	27.0	50	3.00
1.12 28.5	969837-5	21	24.0	37.0	10.0	42.5	34.0	25	4.00
1.35 34.5	969837-6	29	32.5	46.0	10.0	44.5	43.0	25	6.40
1.67 42.5	969837-7	36	40.0	55.0	10.0	46.5	52.0	25	9.60
2.14 54.5	969837-8	48	50.0	67.0	10.0	47.0	63.0	10	11.60

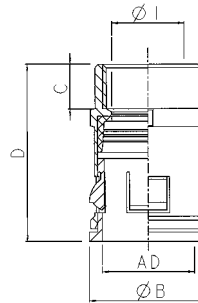
Performance Characteristics

Metal connection, inner thread.

Material

Brass. Finish: Nickel.

RQGM2-P



Trade Size Tubing Outer-Ø AD	RQGM-P Part Number	Thread PG	Smallest Inner-Ø I	Largest Outer-Ø B	Length of Thread C	Total Length D	Hex Width SW	Packet/Pieces	Weight kg/100 p. Approx.
0.39 10.0	969838-1	7	9.5	17.0	7.0	28.5	15.0	50	1.00
0.51 13.0	969838-2	9	11.5	21.0	7.0	30.5	19.0	50	1.50
0.62 15.8	969838-3	11	15.5	24.5	8.0	33.5	23.0	50	2.30
0.83 21.2	969838-4	16	19.0	29.5	8.0	38.5	27.0	50	3.20
1.12 28.5	969838-5	21	24.0	37.0	12.0	42.5	34.0	25	4.20
1.35 34.5	969838-6	29	32.5	46.0	12.0	44.5	43.0	25	6.90
1.67 42.5	969838-7	36	40.0	55.0	12.0	46.5	52.0	25	10.10
2.14 54.5	969838-8	48	50.0	67.0	12.0	47.0	63.0	10	12.20

Corrugated Plastic Tubing Connections (Continued)

Performance

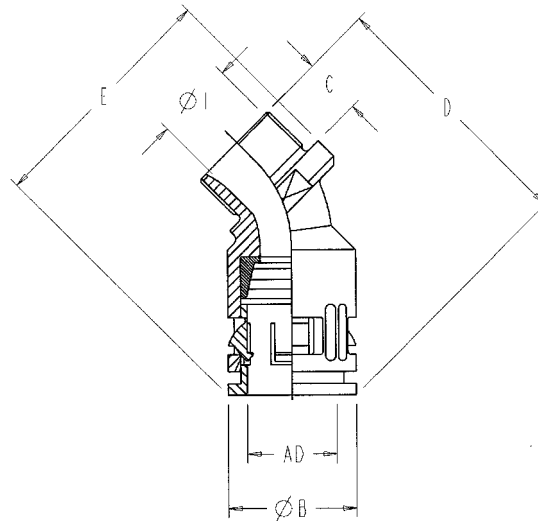
Characteristics

Plastic Bend, 45° with PG-Thread.

Color

Black

RQB1-45



Trade Size Tubing Outer-Ø AD	RQB1-45 Part Number	Thread PG	Smallest Inner-Ø I	Largest Outer-Ø B	Length of Thread C	Total Length E	Total Height D	Hex Width SW	Packet/Pieces	Weight kg/100 p. Approx.
0.39 10.0	796384-1	7	7.9	17.0	10.0	39.0	55.0	16.5	50	0.60
0.51 13.0	796384-2	9	9.0	20.0	12.0	40.5	56.7	20.0	50	0.80
0.62 15.8	796384-3	11	10.0	23.0	12.0	44.6	59.3	24.0	50	1.10
0.73 18.5	796384-4	13.5	12.5	25.0	12.0	46.0	59.0	26.0	50	1.30
0.83 21.2	796384-5	16	15.0	29.5	13.0	48.0	72.0	26.0	50	1.70
1.12 28.5	796384-6	21	20.0	37.0	14.0	63.8	83.8	36.0	25	2.90
1.35 34.5	796384-7	29	30.0	44.0	14.0	73.6	98.6	45.0	10	4.00
1.67 42.5	796384-8	36	39.0	52.0	17.0	82.4	109.0	58.0	10	6.50
2.14 54.5	796384-9	48	45.5	64.0	17.0	97.2	122.0	69.5	5	8.50

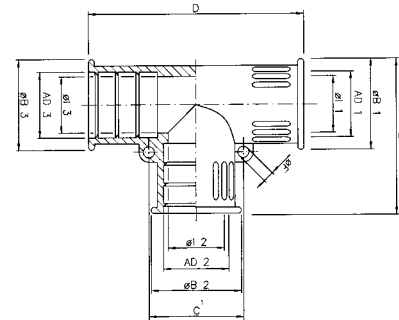
Performance Characteristics

Plastic T-Distributor.

Material

Plastic.

RQT (IP 67)



Trade Size*	RQT (Grey) Part Number	RQT (Black) Part Number	Smallest Inner-Ø Ø I	Outer-Ø Ø B	Length of Thread D	Packet/Pieces	Weight kg/100 p. Approx.
3 x 0.39 10.0	2-796281-1	796281-8	7.0	17.5	46.5	10	0.60
3 x 0.51 13.0	2-796281-2	796281-1	10.0	21.0	51.0	10	0.80
3 x 0.62 15.8	2-796281-3	796281-2	14.0	25.0	63.0	10	1.40
3 x 0.72 18.5	2-796281-4	796281-9	15.0	26.5	70.5	10	1.60
3 x 0.83 21.2	2-796281-5	796281-3	18.0	29.5	71.0	10	1.80
2 x 0.83 / 1 x 1.12 21.2 / 28.5	2-796281-6	796281-4	18.0	32.0	78.0	10	2.80
2 x 1.12 / 1 x 1.12 28.5 / 15.8	2-796281-7	1-796281-0	25.5	36.5	65.0	10	2.50
3 x 1.12 28.5	2-796281-8	796281-5	25.5	36.5	77.0	10	2.70
2 x 1.12 / 1 x 1.35 28.5 / 34.5	2-796281-9	796281-6	25.5	36.5	83.5	10	2.90
3 x 1.35 34.5	3-796281-0	796281-7	31.5	42.5	85.0	10	4.00
3 x 1.35 42.5	3-796281-1	1-796281-1	39.7	52.5	96.0	10	6.00

*Advice: For appropriate tubing/screw connecting combinations choose the same trade size AD (tubing outer-Ø).

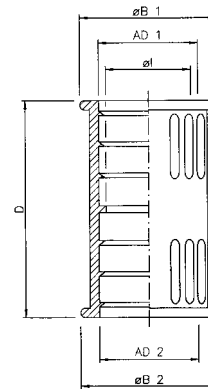
Performance Characteristics

Plastic Coupling.

Material

Plastic.

RQK (IP 67)



Trade Size*	RQK (Grey) Part Number	RQK (Black) Part Number	Smallest Inner-Ø Ø I	Outer-Ø Ø B	Length of Thread D	Packet/Pieces	Weight kg/100 p. Approx.
2 x 0.39 10.0	2-796282-1	796282-8	7.0	17.5	33.5	10	0.25
2 x 0.51 13.0	2-796282-2	796282-1	10.0	20.0	36.5	10	0.30
2 x 0.62 15.8	2-796282-3	796282-2	12.5	23.0	44.5	10	0.50
2 x 0.72 18.5	2-796282-4	796282-9	15.0	26.5	48.0	10	0.60
2 x 0.83 21.2	2-796282-5	796282-3	18.0	29.5	46.0	10	0.80
2 x 1.12 28.5	2-796282-6	796282-4	25.2	36.5	46.0	10	1.00
2 x 1.36 34.5	2-796282-7	796282-5	31.5	42.5	48.0	10	1.50
2 x 1.67 42.5	2-796282-8	796282-6	39.5	51.0	49.0	10	2.00
2 x 2.15 54.5	2-796282-9	796282-7	51.5	63.0	54.5	10	2.70

*Advice: For appropriate tubing/screw connecting combinations choose the same trade size AD (tubing outer-Ø).

Corrugated Plastic Tubing Connections (Continued)

Performance Characteristics

One-piece plastic-Y- distributor for corrugated tubings.

Construction

Distributor case with 3 tubing connections as well as integrated snap-in sleeves and sealings.

Material

High-quality impact resistant plastic material (PA).
Sealing: Santoprene®

Easy to assemble

Easy to assemble due to one-piece screw connection with push-in lock. Simple disconnect by displacing the snap-in sleeve. Smallest outer dimensions to be used under confined conditions.

Smallest inner-Ø ≥ tubing inside diameter.

Protective system

IP 67 acc. EN 60529

Temperature range

From approx. -30° C up to approx. +100° C.

Application

For expert assembly as protective insulating distributor suited acc. to the application rules of DIN EN 60204 in the machine and plant construction.

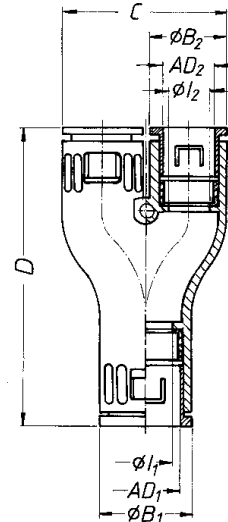
Color

Grey and black

For tubing type

Corrugated tubing, type: **ROHRflex**

RQY (IP 67)



Trade Size* Tubing Outer-Ø AD ₂ /AD ₁	RQY (Grey) Part Number	RQY (Black) Part Number	Through-Passage		Outer-Ø		Total Length D	Total Width C	Packet/ Pieces	Weight kg/100 p. Approx.
			Ø I ₁	Ø I ₂	Ø B ₁	Ø B ₂				
0.39/0.51 2x10.0/1x13.0	969840-1	969839-1	10.0	7.0	20.0	17.0	63.0	36.0	10	1.60
0.51 3x13.0	969840-2	969839-2	10.0	10.0	20.0	20.0	65.0	43.0	10	1.80
0.51/0.62 2x13.0/1x15.8	969840-3	969839-3	12.5	10.0	23.0	20.0	66.0	45.0	10	2.00
0.62 3x15.8	969840-4	969839-4	12.5	12.5	23.0	23.0	68.0	46.0	10	2.20

*Advice: For appropriate tubing/screw connecting combinations choose the same trade size AD (tubing outer-Ø).

Corrugated Plastic Tubing Connections (Continued)

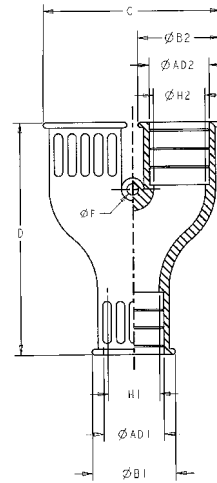
Performance Characteristics

Y Distributor, One Piece.

Material

TPE

RQY (IP 67)



Trade Size* Tubing Outer-Ø AD2/AD1	RQY (Grey) Part Number	RQY (Black) Part Number	Through- Passage		Outer-Ø		Total Length D	Total Width C	Ø F	Packet/ Pieces	Weight kg/100 p. Approx.
			Ø H1	Ø H2	Ø B1	Ø B2					
0.39 3x10.0	2-796550-1	796550-1	9.5	9.5	17.5	17.5	54.5	36.5	4	10	0.90
0.62/0.83 2x15.8/1x21.2	2-796550-2	796550-2	18.0	14.0	29.5	25.0	75.0	52.0	4	10	2.50
0.62/1.12 2x15.8/1x28.5	2-796550-3	796550-3	25.5	14.0	36.5	25.0	75.0	52.0	4	10	2.80
0.73 3x18.5	2-796550-4	796550-4	15.0	15.0	26.5	26.5	81.0	54.5	4	10	2.60
0.83 3x21.2	2-796550-5	796550-5	18.0	18.0	29.5	29.5	82.5	62.5	4	10	2.70
0.83/1.12 2x21.2/1x28.5	2-796550-6	796550-6	25.5	18.0	36.5	29.5	68.0	60.5	4	10	3.40
1.12/1.35 2x28.5/1x34.5	2-796550-7	796550-7	31.5	25.5	42.5	36.5	86.0	77.0	4	10	5.00
1.35/1.67 2x34.5/1x42.5	2-796550-8	796550-8	39.7	31.5	52.5	42.5	98.5	89.0	4	10	6.00
1.67/2.14 2x42.5/1x54.5	2-796550-9	796550-9	52.0	39.7	65.0	52.5	116.0	109.5	4	5	8.50

*Advice: For appropriate tubing/screw connecting combinations choose the same trade size AD (tubing outer-Ø).

Flat-seal, to seal the connector body on the rigid steel conduit connecting thread acc. to DIN 40430, buna-N.

Accessories

FR-P



FR-P Part No.	PG	Inner (mm)	Outer (mm)	Height (mm)	Packet/Pieces	Weight kg/100 p. Case
796257-1	7	12.0	16.5	1.60	50	0.03
796257-2	9	15.0	19.0	1.60	50	0.05
796257-7	11	18.0	23.0	1.80	50	0.06
796257-3	13.5	19.5	25.0	1.80	50	0.07
796257-8	16	21.5	27.0	1.80	50	0.08
796257-9	21	27.5	34.0	2.20	25	0.13
796257-4	29	35.5	44.0	2.20	25	0.19
796257-5	36	46.5	55.5	2.70	25	0.27
796257-6	48	58.5	69.5	3.20	10	0.46

Flat-seal, to seal the connector body on the metric ISO connecting thread acc. to EN 60423, buna-N.

FR-M



FR-M Part No.	Metric	Inner (mm)	Outer (mm)	Height (mm)	Packet/Pieces	Weight kg/100 p. Case
796256-1	M10x1.0	10.0	17.0	1.60	50	0.03
796256-2	M12x1.5	12.0	20.0	1.60	50	0.05
796256-3	M16x1.5	16.0	23.0	1.80	50	0.06
796256-4	M20x1.5	20.0	29.0	1.80	50	0.07
796256-5	M25x1.5	25.0	37.0	1.80	50	0.08
796256-6	M32x1.5	32.0	44.0	2.20	25	0.13
796256-7	M40x1.5	40.0	52.0	2.10	25	0.19
796256-8	M50x1.5	50.0	64.0	2.70	25	0.27
796256-9	M63x1.5	63.0	68.0	3.20	10	0.46

Flat-seal, to seal the connector body on the UNEF-inner thread.

Accessories (Continued)

FR-U



FR-U Part No.	UNEF	NPT	CTG	Whitworth	Inner (mm)	Outer (mm)	Height (mm)	Packet/Pieces	Weight kg/100 p. Case
796258-1	1/2"	—	—	—	9.0	12.0	1.60	50	0.025
796258-2	5/8"	—	—	—	11.0	15.0	1.60	50	0.030
796258-3	3/4"	—	—	—	13.0	18.0	1.60	50	0.035
796258-4	7/8"	—	—	—	16.0	21.0	1.80	50	0.055
796256-3	1"	—	—	—	16.0	23.0	1.80	50	0.060
796256-4	1 3/16"	—	—	—	20.0	29.0	1.80	50	0.070
796257-9	1 3/8"	—	—	—	27.5	34.0	2.20	25	0.130
796258-5	1 7/16"	—	—	—	30.0	35.5	2.20	25	0.140
796258-6	1 3/4"	1"	G28	1"	34.0	43.0	2.20	25	0.190
796258-7	2"	—	—	—	40.0	49.0	2.20	25	0.230

Flat-seal, to seal the connector body on the NPT-Thread/CTG thread acc. to JIS B 0204 or Whitworth-thread acc. to DIN ISO 228-1.

FR-N/C



FR-N/C Part No.	NPT	CTG	Whitworth	Inner (mm)	Outer (mm)	Height (mm)	Packet/Pieces	Weight kg/100 p. Case
796255-1	1/4"	—	1/4"	14.0	17.0	1.60	50	0.03
796255-2	3/8"	—	3/8"	18.0	23.0	1.80	50	0.06
796255-3	1/2"	G16	1/2"	21.5	27.0	1.80	50	0.08
796255-4	3/4"	G22	3/4"	27.5	34.0	2.20	25	0.13
796258-6	1"	G28	1"	34.0	43.0	2.20	25	0.19
796255-6	1 1/4"	G36	1 1/4"	42.5	51.0	2.70	25	0.24
796255-7	1 1/2"	—	1 1/2"	48.5	55.0	2.70	25	0.27
796255-8	2"	G54	2"	60.5	66.0	3.20	10	0.42

O-ring to seal the connector body on the rigid steel conduit connecting thread acc. to DIN 40430.

Accessories (Continued)

OR-P



OR-P Part No.	PG Thread	Inner	Ring Thickness	Packet/Pieces	Weight kg/100 p. Case
796259-1	7	10.8	1.5	50	0.03
796259-2	9	12.5	1.8	50	0.05
796259-3	11	16.0	1.8	50	0.06
796259-4	13.5	18.0	1.8	50	0.07
796259-5	16	20.0	2.0	50	0.08
796259-6	21	26.0	2.0	25	0.13
796259-7	29	34.0	2.0	25	0.19
796259-8	36	44.0	2.5	25	0.27
796259-9	48	55.0	2.5	10	0.46

Counternut, nickel plated brass, rigid steel conduit connecting thread acc. to DIN 40430.

GM-P



GM-P Part No.	PG Thread	Wrench Size Across Flats	Thickness	Packet/Pieces	Weight kg/100 p. Case
796261-1	7	15.0	2.8	100	0.18
796261-2	9	18.0	2.8	100	0.24
796261-3	11	21.0	3.0	100	0.30
796261-4	13.5	23.0	3.0	100	0.35
796261-5	16	26.0	3.0	100	0.48
796261-6	21	32.0	3.5	100	0.80
796261-7	29	41.0	4.0	100	1.35
796261-8	36	51.0	5.0	50	2.14
796261-9	48	64.0	5.5	25	3.35

Counternut, nickel plated brass, metric ISO thread EN 60423.

GM-M



(Grey) Part No.	(Black) Part No.	Thread EN 60423	Wrench Size Across Flats	Thickness	Packet/Pieces	Weight kg/100 p. Case
2-796368-1	796368-1	M10 x 1.0	14.0	5.0	100	0.11
2-796368-2	796368-2	M12 x 1.5	17.0	5.0	100	0.12
2-796368-3	796368-3	M16 x 1.5	22.0	5.0	100	0.14
2-796368-4	796368-4	M20 x 1.5	26.0	6.0	100	0.21
2-796368-5	796368-5	M25 x 1.5	32.0	6.0	100	0.30
2-796368-6	796368-6	M32 x 1.5	41.0	7.0	100	0.57
2-796368-7	796368-7	M40 x 1.5	50.0	7.0	50	0.75
2-796368-8	796368-8	M50 x 1.5	60.0	8.0	25	1.21
2-796368-9	796368-9	M63 x 1.5	75.0	8.0	10	1.28

Counternut, plastic (PA), rigid steel conduit connecting thread acc. to DIN 40430.

Accessories (Continued)

GMK-P



GMK-P (Grey) Part No.	GMK-P (Black) Part No.	PG Thread	Wrench Size Across Flats	Thickness	Packet/Pieces	Weight kg/100 p. Case
796260-1	2-796260-1	7	19.0	5.0	100	0.12
796260-2	2-796260-2	9	22.0	5.0	100	0.13
796260-3	2-796260-3	11	24.0	5.0	100	0.14
796260-4	2-796260-4	13.5	27.0	6.0	100	0.19
796260-5	2-796260-5	16	30.0	6.0	100	0.25
796260-6	2-796260-6	21	36.0	7.0	100	0.34
796260-7	2-796260-7	29	46.0	7.0	100	0.51
796260-8	2-796260-8	36	60.0	8.0	50	1.16
796260-9	2-796260-9	48	70.0	8.0	25	1.28

Counternut, plastic (PA), NPT-Thread.

GMK-N



GMK-N Part No.	NPT	Wrench Size Across Flats	Thickness	Packet/Pieces	Weight kg/100 p. Case
796262-1	3/8"	24.0	5.0	100	0.20
796262-2	1/2"	27.0	6.0	100	0.24
796262-3	3/4"	30.0	6.0	100	0.30

Counternut, nickel plated brass, NPT-Thread.

GM-N



GM-N Part No.	NPT	Wrench Size Across Flats	Thickness	Packet/Pieces	Weight kg/100 p. Case
796473-1	3/8"	20.0	3.0	100	0.34
796473-2	1/2"	24.0	3.0	100	0.42
796473-3	3/4"	30.0	3.5	100	0.74
796473-4	1"	38.0	4.0	100	1.54
796473-5	1 1/4"	46.0	5.0	100	2.00
796473-6	1 1/2"	51.0	5.0	100	2.00
796473-7	2"	64.0	5.5	50	3.51

Accessories (Continued)

Performance Characteristics

End cap from tubing to cable made of plastic for tubings.

Construction

One-piece end cap as transition from tubing to cable resp. as final end of tubing. Fixed by inside circulating ribs when pushed on the tubing.

Material

High-quality plastic Santoprene® thermoplastic elastomers or plastic.

Easy to assemble

Assembled by just putting in tubing end.

Protective System

IP 67 acc. EN 60529

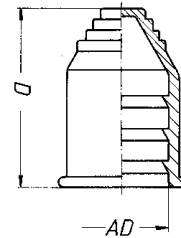
Temperature range

From approx. -40° C up to approx. +120° C, temporarily withstands temperatures up to approx. +150° C.

Color

Grey and black

RQE (IP 67)



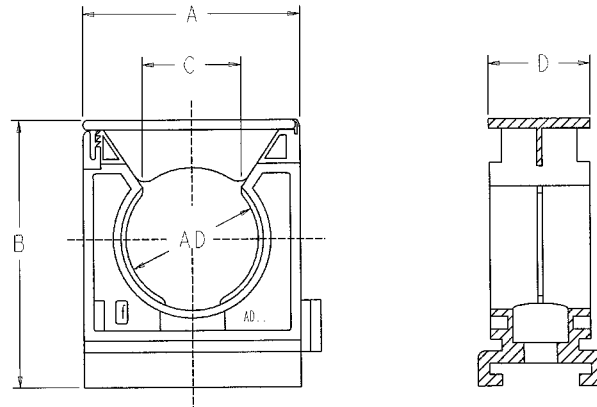
Trade Size** Tubing Outer Ø AD	RQE (Grey) Part No.	RQE (Black) Part No.	For Cable Cross Section Ø Min. - Ø Max.	Total Length D	Packet/ Pieces	Weight kg/ 100 p. Case
0.39 10.0	5030012007*	969847-1	1.0 - 8.0	29.0	50	0.20
0.51 13.0	969848-2	969847-2	1.0 - 10.0	32.5	50	0.30
0.62 15.8	969848-3	969847-3	4.0 - 12.0	36.5	50	0.40
0.72 18.5	5030012013*	5030012213*	4.0 - 13.0	37.5	50	0.50
0.83 21.2	969848-4	969847-4	6.0 - 16.5	37.5	50	0.60
1.12 28.5	969848-5	969847-5	6.0 - 23.0	40.2	25	0.75
1.35 34.5	969848-6	969847-6	6.0 - 29.0	44.2	25	0.90
1.67 42.5	5030012036*	5030012236*	10.0 - 37.0	46.0	25	1.20

*Part No. on inquiry.

**Advice: For appropriate tubing/screw connecting combinations choose the same trade size AD (tubing outer-Ø).

Accessories (Continued)

Tubing Clamp



Trade Size* Tubing Outer Ø AD	(Grey) Part No.	(Black) Part No.	Dimension				Fastening Bore Hole Ø	Packet/ Pieces	Weight kg/ 100 p. Case
			A	B	C	D			
0.39 10.0	796372-1	796369-1	21.67	26.67	8.0	20.0	4.5	50	0.69
0.51 13.0	796372-2	796369-2	26.00	32.00	8.5	20.0	5.5	50	0.93
0.62 15.8	796372-3	796369-3	26.00	32.00	10.0	20.0	5.5	50	0.85
0.70 17.8	796372-4	796369-4	32.50	40.00	12.5	20.0	5.5	50	1.20
0.72 18.5	796372-5	796369-5	32.50	40.00	12.5	20.0	5.5	50	1.20
0.83 21.2	796372-6	796369-6	32.50	40.00	16.6	20.0	6.6	50	1.20
0.86 21.8	796372-7	796369-7	32.50	40.00	16.6	20.0	6.6	50	1.20
1.12 28.5	796372-8	796369-8	43.33	53.34	20.0	20.0	6.6	25	1.70
1.35 34.5	796372-9	796369-9	43.33	53.34	25.0	20.0	6.6	25	1.70
1.67 42.5	1-796372-0	1-796369-0	65.00	80.00	30.0	20.0	6.6	25	3.20
2.14 54.5	1-796372-1	1-796369-1	65.00	80.00	38.0	20.0	6.6	10	2.90

*Advice: For appropriate tubing/screw connecting combinations choose the same trade size AD (tubing outer-Ø).

Electronics

Application Tooling

Bell Fitting Driver

Useful hand tool for inserting connectors into conduits or tubing.



Bell Fitting Driver Part Number	For Thread PG
1-241109-1	7 - 16
1-241109-2	21 - 48



ROHRflex-Shears

Special shears for cutting of ROHRflex corrugated plastic tubing on pages 6-9.



Trade Size* AD	ROHRflex-Shears Part Number	Cutting Wrench for Thread Size
0.39-0.83 10.0-21.2	969849-1	PG 7 - PG 16
1.00-1.35 25.5-34.5	969849-2	PG 21 - PG 29
1.35 34.5	969849-3	PG 29

*Advice: For appropriate tubing/screw connecting combinations choose the same trade size AD (tubing outer-Ø).

Mini Disc Saw (Customer Supplied)

For cutting and trimming of protective metal conduits type SPR- or FLEXAgraff on pages 40-44.

Disc Saw — .5 to .6 [12 to 15] diameter, with carbide tipped teeth

Number of Teeth — 25 on copper disc; 50 on steel disc

Disc Speed — Approx. 40,000 rpm

Drive — Pneumatic or electric

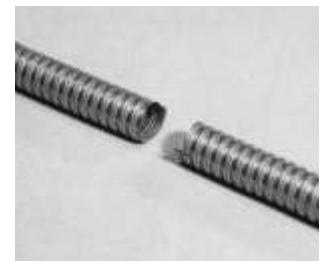
Disc saw and accessories available on request.



Cut longitudinally across two hose covering segments



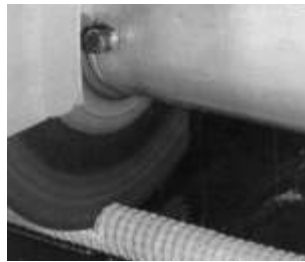
Unscrew the coils



The result is a clean cut

**Cutting Disc
(Customer Supplied)**

For cutting of protective braided metal conduits on page 41.



Position conduit below and at right-angle to the cutting disc.



Lightly cut through the conduit for clean ends.

**Pneumatic Cutting Pliers
(Customer Supplied)**

For cutting of protective plastic conduits with helix on page 45.



Cut into the plastic sheathing



Cut through the helix with pliers



The result is a clean and finished cut of the conduit

**Band Saw
(Customer Supplied)**

For cutting and trimming of most types of conduits.

Band Saw — .16 to .2 [4 to 5] wide, .02 to .03 [0.6 to 0.8] thick, 24 teeth, used at a high cutting speed



Position conduit at right-angle to band saw



Lightly cut through conduit



Conduit ends are clean and ready for use

*Electronics***Application Tooling** (Continued)**Band Saw**
(Customer Supplied)

(Continued)

For cutting of braided metal conduits on page 41.



Wrap conduit with metal adhesive tape two or three times at the cutting position.



Position conduit at right-angle to the band saw and lightly cut through the conduit.



Conduit ends should be clean without fraying, due to adhesive tape wrapping.

Shears and Snips
(Customer Supplied)

For cutting of protective plastic conduits on page 45.



Cut through the plastic sheathing.



Bend the conduit and cut through the steel helix.

Hand Saw
(Customer Supplied)

For small quantities, conduits can be easily cut with a hand saw. The result should be just as good as with a band saw.



Lightly and squarely cut through the conduit

Protective Metal Conduits

Performance Characteristics

Protective metal conduit, galvanized steel, round, profile: double-overlapped. VDE-reg.-no. 9375 (approved acc. to DIN VDE 57605, marking AS)

Construction

Strip wound flexible metallic conduit with double overlapped profile, round cross section.

Material

Cold strip St 2 acc. DIN 1624, galvanized, Fe/Zn 3, or rust proof steel.

Properties

Due to the double overlapped profile the conduit provides a high tensile and twisting strength and it better prevents untwisting of the conduit, very flexible, high shielding factor.

Protective system

IP 40 acc. EN 60529

Temperature range

Up to approx. +400° C

Application

Electrical installation conduit for installations requiring high stretching and twisting strain. A.o. protective conduit for oil ducts in the shipbuilding industry and for hydraulic and pneumatic conduits.

Connections

Appropriate FLEXA-conduit screw connections with rigid steel conduit connecting thread PG DIN 40430 and metric ISO thread acc. EN 60423, suitable for using in Ex-areas Zone 1 and 2 acc. VDE 0165. Especially suitable acc. to the specifications of EN 60204: Type US- and Type USW-.

Delivery lengths

25-50m depending on dimension, straightly measured.

Suitable for using in Ex-areas Zone 1 and 2 acc. VDE 0165.

Related Product Data

Application Tooling — Page 37

FLEXA^{graft} - AS (IP 40)



Trade Size** Conduit Outer-Ø AD	Dimension Inner-Ø x Outer-Ø mm Approx.	FLEXA ^{graft} Part Number	Bending Radius mm ±10%	Weight kg/m ±10%	Minimum Package Size*	Size in Ft.
0.39 10.0	8 x 10	969784-1	40	0.120	50m	164'
0.55 14.0	12 x 14	969784-2	45	0.130	50m	164'
0.67 17.0	14 x 17	969784-3	60	0.250	50m	164'
0.75 19.0	16 x 19	969784-4	63	0.280	50m	164'
0.83 21.0	18 x 21	969784-5	70	0.300	50m	164'
1.06 27.0	24 x 27	969784-6	90	0.390	50m	164'
1.42 36.0	31 x 36	969784-7	130	0.750	25m	82'
1.77 45.0	40 x 45	969784-8	170	0.950	25m	82'
2.20 56.0	51 x 56	969784-9	220	1.200	25m	82'

*20 Rings of specified length.

**Advice: For appropriate tubing/screw connecting combinations choose the same trade size AD (tubing outer-Ø).

Notes: 1. Ask for other dimensions.

2. For quantities less than minimums, contact Tyco Electronics.

Protective Metal Conduits (Continued)

Performance Characteristics

Protective metal conduit, galvanized steel, round, profile: double overlapped with CU-braiding for EMC protection up to 1000 MHz. The measurement of the coupling impedance acc. to DIN 47250 part 4 results in a minimum value of 227.6m Ω/m at 30 MHz. Acc. to DIN VDE 0245 the maximum coupling impedance amount to 250m Ω/m at 30 MHz.

Construction

Strip wound flexible metallic conduit with double-overlapped profile, round cross section, with copper wire braiding.

Material

1. Protective conduit: Cold strip ST 2 acc. DIN 1624, galvanized, Fe/Zn 3
2. Braiding: Copper, tinned

Properties

Due to its double-folded profile the conduit provides a high tensile and twisting strength, no untwisting of the conduit, extremely flexible. Shielding factor up to 10 MHz acc. VG95373, part 41 up to 30 db, up to 1000 MHz acc. VDE 0877, part 2.02/85 up to 30 db.

Protective system

IP 40 acc. EN 60529

Temperature range

Up to approx. +150°C

Application

Electrical installation conduit for installations requiring high stretching and twisting strain for EMC applications.

Connections

Appropriate FLEXA-conduit screw connections with rigid steel conduit connecting thread PG DIN 40430 and metric ISO thread EN 60423 for mounting suitable acc. to EMC specifications. **Note: Use brass thrust collar for EMC-safe mounting.** For EMC-usage take note of assembly instruction. Especially suitable acc. to the specifications of EN 60204: Type US- and Type USW-.

Delivery lengths

Full meter pieces beginning with 1 meter, straightly measured. Fixed lengths are being FLEXA-mounted with connecting elements acc. to EMC specifications. Note: To lessen noise the conduit can be braided several times.

Suitable for using in Ex-areas Zone 1 and 2 acc. VDE 0165.

Related Product Data

Application Tooling — Pages 37-39

FLEXA^{graff}-CU (IP 40)



Trade Size** Conduit Outer-Ø AD	Dimension Inner-Ø x Outer-Ø mm Approx.	FLEXA ^{graff} Part Number	Bending Radius mm ±10%	Weight kg/m ±10%	Minimum Package Size*
0.39 10.0	7 x 10	969785-1	44	0.130	50
0.55 14.0	11 x 14	969785-2	50	0.164	50
0.67 17.0	13 x 17	969785-3	67	0.290	50
0.75 19.0	15 x 19	969785-4	70	0.330	50
0.83 21.0	17 x 21	969785-5	78	0.350	50
1.06 27.0	23 x 27	969785-6	100	0.460	50
1.42 36.0	29 x 36	969785-7	150	0.860	25
1.77 45.0	38 x 45	969785-8	190	1.100	25
2.20 56.0	49 x 56	969785-9	240	1.420	25

*20 Rings of specified length.

**Advice: For appropriate tubing/screw connecting combinations choose the same trade size AD (tubing outer-Ø).

- Notes:**
1. Full meter pieces beginning with 1 meter as fixed lengths deliverable.
 2. For quantities less than minimums, contact Tyco Electronics.

Protective Metal Conduits Liquid Tight

Performance Characteristics

Protective metal conduit, galvanized steel, round profile: double overlapped with oil resistant polyurethane sheathing VDE Reg.-No. 9967 (approved acc. to DIN VDE 57605, marking AS)

Construction

Strip wound flexible metallic conduit with double overlapped profile, round cross section, with high-grade PU sheathing.

Material

1. Protective conduit: Cold strip St 2 acc. DIN 1624, galvanized, Fe/Zn3.
2. Sheathing: Polyurethane (PU)

Properties

Due to the double overlapped profile the conduit provides a high tensile and twisting strength, oil-, benzene-, and grease resistant, widely resistant to solvents acids, free of halogen, silicon and cadmium, outstanding qualities at low temperatures, no untwisting of the conduit, very flexible, high shielding, microbic resistant, flame resistant acc. to UL94V-O.

Protective system

IP 68 acc. EN 60529

Temperature range

From approx. -40°C up to +100°C

Application

Electrical installation conduit for installations requiring high stretching and twisting strain as well as liquid-tight installations which have to be protected against oil, grease and benzene at high temperatures.

Connections

Appropriate FLEXA-conduit screw connections with rigid steel conduit connecting thread PG DIN 40430 and metric ISO thread EN 60423. Especially suitable acc. to the specifications of EN 60204: Type US- and Type USW-.

Color

Metallic Blue

Delivery lengths

10, 25 and 50m depending on dimension, straightly measured.

Related Product Data

Application Tooling — Page 37

FLEXA^{graff}-PU-AS (IP 68)



Trade Size** Hose Outer-Ø AD	Dimension Inner-Ø x Outer-Ø mm Approx.	FLEXA ^{graff} - PU-AS Part Number	Bending Radius mm ±10%	Weight kg/m ±10%	Minimum Package Size*	Ring Size in Ft.
0.39 10.0	7 x 10	969786-1	44	0.130	50m	164'
0.55 14.0	11 x 14	969786-2	50	0.164	50m	164'
0.67 17.0	13 x 17	969786-3	67	0.290	50m	164'
0.75 19.0	15 x 19	969786-4	70	0.330	50m	164'
0.83 21.0	17 x 21	969786-5	78	0.350	50m	164'
1.06 27.0	23 x 27	969786-6	100	0.460	50m	164'
1.42 36.0	29 x 36	969786-7	150	0.860	25m	82'
1.77 45.0	38 x 45	969786-8	190	1.100	25m	82'
2.20 56.0	49 x 56	969786-9	240	1.420	25m	82'

*20 Rings of specified length.

**Advice: For appropriate tubing/screw connecting combinations choose the same trade size AD (tubing outer-Ø).

Note: For quantities less than minimums, contact Tyco Electronics.

Trade Size** Hose Outer-Ø AD	Dimension Inner-Ø x Outer-Ø mm Approx.	FLEXA ^{graff} - PU-AS Part Number	Bending Radius mm ±10%	Weight kg/m ±10%	Minimum Package Size*	Ring Size in Ft.
0.39 10.0	7 x 10	1-969786-0	44	0.130	10m	32'9
0.55 14.0	11 x 14	1-969786-1	50	0.164	10m	32'9
0.67 17.0	13 x 17	1-969786-2	67	0.290	10m	32'9
0.75 19.0	15 x 19	1-969786-3	70	0.330	10m	32'9
0.83 21.0	17 x 21	1-969786-4	78	0.350	10m	32'9
1.06 27.0	23 x 27	1-969786-5	100	0.460	10m	32'9
1.42 36.0	29 x 36	1-969786-6	150	0.860	10m	32'9
1.77 45.0	38 x 45	1-969786-7	190	1.100	10m	32'9
2.20 56.0	49 x 56	1-969786-8	240	1.420	10m	32'9

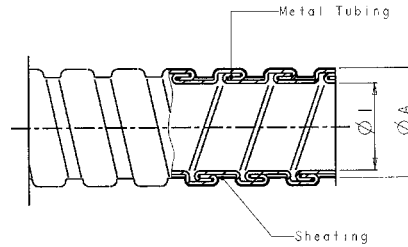
*20 Rings of specified length.

**Advice: For appropriate tubing/screw connecting combinations choose the same trade size AD (tubing outer-Ø).

Note: For quantities less than minimums, contact Tyco Electronics.

Protective Metal Conduits Liquid Tight (Continued)

FLEXA^{graff}-ME-ASF



Trade Size* Conduit Outer-Ø AD	Dimension Inner-Ø x Outer-Ø mm Approx.	FLEXA ^{graff} - ME-ASF Part Number	Bending Radius mm	Weight kg/m	Minimum Package Size
0.39 10.0	7 x 10	969787-1	44	0.130	50m
0.55 14.0	11 x 14	969787-2	50	0.164	50m
0.67 17.0	13 x 17	969787-3	67	0.300	50m
0.75 19.0	15 x 19	969787-4	70	0.330	50m
0.83 21.0	17 x 21	969787-5	78	0.350	50m
1.06 27.0	23 x 27	969787-6	100	0.460	50m
1.42 36.0	29 x 36	969787-7	150	0.860	25m
1.77 45.0	38 x 45	969787-8	190	1.100	25m
2.20 56.0	49 x 56	969787-9	240	1.420	25m

***Advice:** For appropriate tubing/screw connecting combinations choose the same trade size AD (tubing outer-Ø).
Note: For quantities less than minimums, contact Tyco Electronics.

Protective Metal Conduits Liquid Tight (Continued)

Performance Characteristics

Protective metal conduit, galvanized steel, round, with flame-resistant sheathing, non corrosive, low toxicity, low smoke gas density. Electrical installation conduit for heavy mechanical stresses, DIN 49012, structural shape H, approved according to DIN VDE 57605.

Construction

Strip wound flexible metallic conduit with hooked profile, round cross section, polygonal profile, with flame-resistant Megolon® sheathing.

Material

1. Protective conduit: Cold strip DC 03 acc. EN 10139, galvanized, Fe/Zn 3.
2. Sheathing: Flame-resistant Megolon® flame-resistant sheathing.

Properties

Good tensile strength, withstands cross-pressure, halogen-, silicone- and cadmium free, ozone and UV resistant, hardly inflammable, self-extinguishing, low smoke gas evolution.

Protective system:

IP 68 acc. EN 60529

Temperature range

From approx. -15°C up to approx. +80°C

Application

Electrical installation conduit for liquid-tight installations in fire risked areas as protection against fire effects, like corrosiveness, toxicity and smoke gas evolution.

Connections

Appropriate FLEXA-conduit screw connections with rigid steel conduit connecting thread PG DIN 40430 and metric ISO thread EN 60423 see conduit screw connections. Especially suitable acc. to the specifications of EN 60204: Type US- and Type USW-.

Color

Black

Delivery lengths

25 m and 50 m depending on dimension, straightly measured. Fixed lengths deliverable, cutting costs as per price list.

SPR-ME-ASF (IP 68)



Trade Size*** Conduit Outer-Ø AD	Dimension Inner-Ø x Outer-Ø mm Approx.	SPR-ME-ASF Part Number	Minimum Quantity m	Bending Radius mm ±10%	Weight kg/m ±10%	Minimum Package Size²	Size in Ft.
0.39 10.0	7 x 10	2012412007**	500	36	0.085	50m	164'
0.55 14.0	10 x 14	2012412010**	500	44	0.135	50m	164'
0.67 17.0	13 x 17	2012412013**	500	50	0.170	50m	164'
0.75 19.0	15 x 19	2012412015**	500	58	0.200	50m	164'
0.83 21.0	17 x 21	2012412017**	500	64	0.220	50m	164'
1.06 27.0	22 x 27	2012412022**	250	80	0.340	50m	164'
1.42 36.0	29 x 36	2012412029**	250	108	0.620	25m	82'
1.77 45.0	38 x 45	2012412038**	250	130	0.820	25m	82'
2.20 56.0	49 x 56	2012412049**	250	155	0.970	25m	82'

*20 Rings of specified length.

**Part No. on inquiry

***Advice: For appropriate tubing/screw connecting combinations choose the same trade size AD (tubing outer-Ø).

Note: For quantities less than minimums, contact Tyco Electronics.

Protective Plastic Conduits

Performance Characteristics

Protective plastic conduit with inside helix of PVC-sheathed spring steel wire, with oil resistant polyurethane jacket.

Construction

Helical coiled corrugated plastic conduit with inside helix of plastic-sheathed spring steel wire and fixed high-grade plastic PU jacket.

Material

High-quality Polyurethane (PU). Inside helix from plastic-sheathed spring steel wire.

Properties

Extremely flexible, highly expandable and upsettable, air- and liquid-tight, high tenacity and abrasion resistance. Inside protection against corrosion from sheathed spring steel wire. Oil-, benzine- and grease resistant, widely resistant to solvents acids, free of halogen, silicon and cadmium, microbic resistant, outstanding qualities at low temperatures, flame resistant, UL94V-0.

Protective system

IP 68 acc. EN 60529

Temperature range

From approx. -40°C up to +100°C

Application

Suitable for highly flexible and liquid-tight installations which have to be better protected against oil, grease and benzine at high temperatures.

Connections

Appropriate FLEXA-conduit screw connections with rigid steel conduit connecting thread PG DIN 40430 and metric ISO thread EN 60423. Especially suitable acc. to the specifications of EN 60204: Type USK-, LKI-, LKID-, LKIW-F and LKIW- acc. to the required protective system.

Color

Metallic blue.
Special colors on inquiry.

Delivery lengths

10, 25 and 50m depending on dimension, straightly measured by its own weight.

Related Product Data

Application Tooling — Page 37 and 39

AIRflex-KUW-PU (IP 68)



Trade Size** Conduit Outer-Ø AD	Dimension Inner-Ø x Outer-Ø mm Approx.	AIRflex KUW-PU Part Number	Bending Radius mm ±10%	Weight kg/m ±10%	Minimum Package Size*	Size in Ft.
0.39 10.0	7 x 10	969788-1	8	0.070	50m	164'
0.55 14.0	10 x 14	969788-2	10	0.085	50m	164'
0.67 17.0	13 x 17	969788-3	13	0.130	50m	164'
0.75 19.0	15 x 19	969788-4	15	0.150	50m	164'
0.83 21.0	16 x 21	969788-5	17	0.210	50m	164'
1.06 27.0	22 x 27	969788-6	20	0.290	50m	164'
1.42 36.0	29 x 36	969788-7	25	0.440	25m	82'
1.77 45.0	38 x 45	969788-8	36	0.542	25m	82'
2.20 56.0	48 x 56	969788-9	40	0.875	25m	82'

*20 Rings of specified length.

**Advice: For appropriate tubing/screw connecting combinations choose the same trade size AD (tubing outer-Ø).
Note: For quantities less than minimums, contact Tyco Electronics.

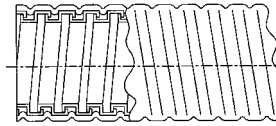
Trade Size** Conduit Outer-Ø AD	Dimension Inner-Ø x Outer-Ø mm Approx.	AIRflex KUW-PU Part Number	Bending Radius mm ±10%	Weight kg/m ±10%	Minimum Package Size*	Size in Ft.
0.39 10.0	7 x 10	1-969788-0	8	0.070	10m	32'9
0.55 14.0	10 x 14	1-969788-1	10	0.085	10m	32'9
0.67 17.0	13 x 17	1-969788-2	13	0.130	10m	32'9
0.75 19.0	15 x 19	1-969788-3	15	0.150	10m	32'9
0.83 21.0	16 x 21	1-969788-4	17	0.210	10m	32'9
1.06 27.0	22 x 27	1-969788-5	20	0.290	10m	32'9
1.42 36.0	29 x 36	1-969788-6	25	0.440	10m	32'9
1.77 45.0	38 x 45	1-969788-7	36	0.542	10m	32'9
2.20 56.0	48 x 56	1-969788-8	40	0.875	10m	32'9

*20 Rings of specified length.

**Advice: For appropriate tubing/screw connecting combinations choose the same trade size AD (tubing outer-Ø).
Note: For quantities less than minimums, contact Tyco Electronics.

Protective Metal Conduit, with PVC Sheathing

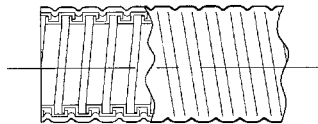
SPR-PVC-AS



Trade Size* Conduit Outer-Ø AD	Dimension Inner-Ø x Outer-Ø mm Approx.	Part Number	Bending Radius mm	Approx. Weight kg/m	Delivery Length
0.39 10.0	7 x 10	796402-1	32	0.085	50m
0.55 14.0	10 x 14	796402-2	40	0.135	50m
0.67 17.0	13 x 17	796402-3	45	0.170	50m
0.75 19.0	15 x 19	796402-4	52	0.200	50m
0.83 21.0	17 x 21	796402-5	58	0.220	50m
1.06 27.0	22 x 27	796402-6	72	0.340	50m
1.42 36.0	29 x 36	796402-7	98	0.620	25m
1.77 45.0	38 x 45	796402-8	118	0.820	25m
2.20 56.0	49 x 56	796402-9	140	0.970	25m

*Advice: For appropriate tubing/screw connecting combinations choose the same trade size AD (tubing outer-Ø).

SPR-EDU-AS



Trade Size* Conduit Outer-Ø AD	Dimension Inner-Ø x Outer-Ø mm Approx.	Part Number	Bending Radius mm	Weight kg/m ±10%	Delivery Length
0.39 10.0	7 x 10	796541-1	28	0.110	50m
0.55 14.0	10 x 14	796541-2	34	0.180	50m
0.67 17.0	13 x 17	796541-3	40	0.230	50m
0.75 19.0	15 x 19	796541-4	45	0.260	50m
0.83 21.0	17 x 21	796541-5	50	0.300	50m
1.06 27.0	22 x 27	796541-6	63	0.510	50m
1.42 36.0	29 x 36	796541-7	85	0.750	25m
1.77 45.0	38 x 44	796541-8	100	1.000	25m
2.20 56.0	49 x 56	796541-9	135	1.350	25m

*Advice: For appropriate tubing/screw connecting combinations choose the same trade size AD (tubing outer-Ø).

Connections with Ferrules

Performance Characteristics

Multipart safety type screwed conduit connection with integrated ferrule and with PG thread, acc. DIN 40430 for all strip wound conduit types.

Construction

Connector body with hexagon wrench surface, fixed rigid steel conduit connecting thread DIN 40430, hexagon pressure nut, sealing of plastic, to receive FLEXA ferrules of metal and plastic.

Material

Connector Body: nickel-plated brass. Hexagon pressure nut: nickel-plated brass. Sealing ring: Thermoplastic elastomer, or TEFLON. Ferrule: Polished brass or plastic depending on conduit type.

Properties

Security conduit fitting with high water- and dustproof and friction-type locking

US-P (IP 40 – IP 66)



of conduit and screw connection, correct grounding, covering of the conduit ends, vibration and tension-proof, in combination with the right protective conduit.

Protective system

From IP 40 to IP 66 acc. EN 60529 in combination with the right protective conduit.

Temperature range

From approx. -40°C up to approx. +125°C with sealing of thermoplastic elastomer. From approx. -60°C up to approx. +300°C with sealing of TEFLON, especially in combination with **FLEXA**graff-SI-ASF. From approx. -40°C up to approx. +250°C with thrust collar of brass, especially in combination with **FLEXA**graff-CU (EMC-protection).

Application

Optimum protective conduit fitting, appropriate according to the specifications EN 60204 applicable to all areas of machine and installation construction.

Suitable for conduit types

For all protective conduit types except types of the LIQUID TIGHT-EF, -UL, -CSA.

PG	Trade Size*** AD	For Type: SPR-AS			For Types: SPR-PVC-AS/ SPR-PU-AS, SPR-EDU-AS, SPR-ME-ASF/SPR-CU-AS**			For Type: FLEXAgraff-AS			Packet/ Pieces	Weight kg/ 100 p. Approx.
		Conduit Dim.	Smallest Inner-Ø	Part Number	Conduit Dim.	Smallest Inner-Ø	Part Number	Conduit Dim.	Smallest Inner-Ø	Part Number		
7	0.39 10.0	8 x 10	0.25 6.5	969794-1	7 x 10	0.23 6.0	969795-1	8 x 10	0.25 6.5	969794-1	50	1.68
9	0.55 14.0	11 x 14	0.39 10.0	969795-2	10 x 14	0.33 8.5	969795-2	12 x 14	0.41 10.5	969794-2	50	3.16
11	0.67 17.0	14 x 17	0.49 12.5	969794-3	13 x 17	0.45 11.5	969795-3	14 x 17	0.49 12.5	969794-3	50	4.14
13.5	0.75 19.0	16 x 19	0.57 14.5	969794-4	15 x 19	0.53 13.5	969795-4	16 x 19	0.57 14.5	969794-4	50	4.70
16	0.83 21.0	18 x 21	0.64 16.5	969794-5	17 x 21	0.61 15.5	969795-5	18 x 21	0.64 16.5	969794-5	50	5.38
21	1.06 27.0	23 x 27	0.84 21.5	969794-6	22 x 27	0.80 20.5	5010128021*	24 x 27	0.88 22.5	969794-6	25	10.00
29	1.42 36.0	31 x 36	1.16 29.5	969794-7	29 x 36	1.08 27.5	969795-7	31 x 36	1.16 29.5	969794-7	25	11.15
36	1.77 45.0	40 x 45	1.49 38.0	969794-8	38 x 45	1.43 36.5	969795-8	40 x 45	1.49 38.0	969794-8	20	18.18
48	2.20 56.0	51 x 56	1.92 49.0	969794-9	49 x 56	1.87 47.5	969795-9	51 x 56	1.92 49.0	969794-9	10	23.60

*Part No. on inquiry

**SPR-CU-AS and AIRflex-KUW-CU only with MSD for EMC-usage. Part No. on inquiry

***Advice: For appropriate tubing/screw connecting combinations choose the same trade size AD (tubing outer-Ø).

Connections with Ferrules (Continued)

Material

Polished brass or plastic depending on hose type.

US-P

(IP 40 – IP 66) (Continued)



Trade Size** AD	For Type: FLEXAgraff-PU-AS, FLEXAgraff-ME-ASF			For Types: SPR-PVC-EDU-AS, SPR-EDU-PVC			For Type: AIRflex-KUW-EDU AIRflex-KUW-CU*			Packet/ Pieces	Weight kg/ 100 p. Approx.
	Conduit Dim.	Smallest Inner-Ø	Part Number	Conduit Dim.	Smallest Inner-Ø	Part Number	Conduit Dim.	Smallest Inner-Ø	Part Number		
0.39 10.0	7 x 10	0.23 6.0	969795-1	—	—	—	—	—	—	50	1.68
0.55 14.0	11 x 14	0.39 10.0	969795-2	9 x 14	0.33 8.5	969795-2	9 x 14	0.33 8.5	969795-2	50	3.16
0.67 17.0	13 x 17	0.45 11.5	969795-3	12 x 17	0.43 11.0	5010135011*	12 x 17	0.43 11.0	5010135011*	50	4.14
0.75 19.0	15 x 19	0.53 13.5	969795-4	14 x 19	0.51 13.0	5010135013*	14 x 19	0.51 13.0	5010135013*	50	4.70
0.83 21.0	17 x 21	0.61 15.5	969795-5	16 x 21	0.57 14.5	5010135016*	15 x 21	0.57 14.5	5010135016*	50	5.38
1.06 27.0	23 x 27	0.84 21.5	969795-6	21 x 27	0.76 19.5	5010601021*	20 x 27	0.76 19.5	5010135021*	25	10.00
1.42 36.0	29 x 36	1.08 27.5	969795-7	28 x 36	1.08 27.5	969795-7	28 x 36	1.08 27.5	969795-7	25	11.15
1.77 45.0	38 x 45	1.43 36.5	969795-8	37 x 45	1.39 35.5	5010135036*	37 x 45	1.39 35.5	5010135036*	20	18.18
2.20 56.0	49 x 56	1.87 47.5	969795-9	48 x 56	1.85 47.0	5010135048*	48 x 56	1.85 47.0	5010135048*	10	23.60

*Part No. on inquiry

**Advice: For appropriate tubing/screw connecting combinations choose the same trade size AD (tubing outer-Ø).

Trade Size* AD	For Types: AIRflex-KUW, AIRflex-KUW-PU, AIRflex-GRS, AIRflex-K			Packet/ Pieces	Weight kg/ 100 p. Approx.
	Conduit Dim.	Smallest Inner-Ø	Part Number		
0.39 10.0	7 x 10	0.23 6.0	969797-1	50	1.54
0.55 14.0	10 x 14	0.35 9.0	969797-2	50	2.85
0.67 17.0	13 x 17	0.45 11.5	969797-3	50	3.79
0.75 19.0	15 x 19	0.51 13.0	969797-4	50	4.31
0.83 21.0	16 x 21	0.57 14.5	969797-5	50	4.93
1.06 27.0	21 x 27	0.76 19.5	969797-6	25	9.21
1.42 36.0	29 x 36	1.04 26.5	969797-7	25	10.01
1.77 45.0	38 x 45	1.41 36.0	969797-8	20	16.82
2.20 56.0	48 x 56	1.79 45.5	969797-9	10	21.85

*Advice: For appropriate tubing/screw connecting combinations choose the same trade size AD (tubing outer-Ø).

Connections with Ferrules (Continued)

Material

Polished brass or plastic depending on hose type.

US-P

(IP 40 – IP 66) (Continued)



Trade Size***	Thread DIN 40430 PG	For Type: FLEXAgraft-SI-ASF			For Types: FLEXAgraft-CU mit MSD (EMV) FLEXAgraft-CU-PVC mit MSD (EMV)**			For Type: K-EDU			Packet/ Piece	Wt. kg/ 100 p. Approx.
		Conduit Dim.	Smallest Inner-Ø	Part Number	Conduit Dim.	Smallest Inner-Ø	Part Number	Conduit Dim.	Smallest Inner-Ø	Part Number		
0.39 10.0	7	6 x 10	0.19 5.0	5010137007*	7 x 10	0.23 6.0	969796-1	6 x 10	0.23 6.0	5010132007*	50	1.68
0.55 14.0	9	10 x 14	0.43 11.0	5010137009*	11 x 14	0.39 10.0	969796-2	9 x 14	0.33 8.5	5010132009*	50	3.16
0.67 17.0	11	12 x 17	0.41 10.5	5010137011*	13 x 17	0.45 11.5	969796-3	12 x 17	0.45 11.5	5010132011*	50	4.14
0.75 19.0	13.5	14 x 19	0.49 12.5	5010137013*	15 x 19	0.53 13.5	969796-4	14 x 19	0.53 13.5	5010132013*	50	4.70
0.83 21.0	16	16 x 21	0.57 14.5	5010137016*	17 x 21	0.61 15.5	969796-5	16 x 21	0.61 15.5	5010132016*	50	5.38
1.06 27.0	21	21 x 27	0.76 19.5	5010137021*	23 x 27	0.84 21.5	969796-6	21 x 27	0.80 20.5	5010132021*	25	10.00
1.42 36.0	29	27 x 36	1.04 26.5	5010137029*	29 x 36	1.08 27.5	969796-7	28 x 36	1.08 27.5	5010132029*	25	11.15
1.77 45.0	36	36 x 45	1.35 34.5	5010137036*	38 x 45	1.43 36.5	969796-8	37 x 45	1.45 37.0	5010132036*	20	18.18
2.20 56.0	48	47 x 56	1.79 45.5	5010137048*	49 x 56	1.87 47.5	969796-9	48 x 56	1.88 48.0	5010132048*	10	23.60

*Part No. on inquiry.

**For liquid tight version a special type is necessary.

***Advice: For appropriate tubing/screw connecting combinations choose the same trade size AD (tubing outer-Ø).

Connections with Ferrules (Continued)

Performance Characteristics

Multipart safety-type angle screwed conduit connection with integrated ferrule and with PG-thread DIN 40430 for all strip wound conduit types.

Construction

Round connector body in angle version of 90°, fixed rigid steel conduit connecting thread DIN 40430, hexagon pressure nut, sealing ring of plastic, to receive all FLEXA versions of ferrules of metal and plastic.

Material

Connector body: zinc die-casting. Hexagon pressure nut: nickel-plated brass. Sealing ring: Thermoplastic elastomer, or TEFLON. Ferrule: polished brass or plastic, depending on conduit type.

Properties:

Security conduit fitting with high water- and dustproof and friction-type

USW-P (IP 40 – IP 66)



locking of conduit and screw connection, correct grounding, covering of the conduit ends, vibration and tension-proof, in combination with the appropriate protective conduit.

Protective system

From IP 40 to IP 66 acc. EN 60529 in combination with the corresponding protective conduit.

Temperature range

From approx. -40°C up to approx. +125°C with sealing of thermoplastic elastomer. From approx. -60°C up to approx. +300°C with sealing of TEFLON, especially in combination with FLEXAgraff-SI-ASF. From approx. -40°C up to approx. +250°C with thrust collar of brass, especially in combination with FLEXAgraff-CU (EMC-protection).

Application

Optimum protective conduit fitting, appropriate according to the specifications EN 60204 in all areas of machine and installation construction.

For conduit types

For all protective conduit types except types of the LIQUID TIGHT-EF, -UL and -CSA.

Trade Size** AD	Thread DIN 40430 PG	For Type: SPR-AS			For Types: SPR-PVC-AS/ SPR-PU-AS, SPR-EDU-AS, SPR-ME-ASF/ SPR-CU-AS**			For Type: FLEXAgraff-AS			Packet/Pieces	Weight kg/100 p. Approx
		Conduit Dim.	Smallest Inner-Ø	Part Number	Conduit Dim.	Smallest Inner-Ø	Part Number	Conduit Dim.	Smallest Inner-Ø	Part Number		
0.39 10.0	7	8 x 10	0.25 6.5	969798-1	7 x 10	0.23 6.0	969799-1	8 x 10	0.25 6.5	969798-1	25	2.80
0.55 14.0	9	11 x 14	0.39 10.0	969799-2	10 x 14	0.33 8.5	5010228009*	12 x 14	0.41 10.5	969798-2	25	3.90
0.67 17.0	11	14 x 17	0.49 12.5	969798-3	13 x 17	0.45 11.5	969799-3	14 x 17	0.49 12.5	969798-3	25	5.90
0.75 19.0	13.5	16 x 19	0.57 14.5	969798-4	15 x 19	0.53 13.5	969799-4	16 x 19	0.57 14.5	969798-4	25	7.70
0.83 21.0	16	18 x 21	0.64 16.5	969798-5	17 x 21	0.61 15.5	969799-5	18 x 21	0.64 16.5	969798-5	25	9.80
1.06 27.0	21	23 x 27	0.84 21.5	969798-6	22 x 27	0.80 20.5	5010228021*	24 x 27	0.88 22.5	969798-6	10	13.10
1.42 36.0	29	31 x 36	1.16 29.5	969798-7	29 x 36	1.08 27.5	969799-7	31 x 36	1.16 29.5	969798-7	10	23.30

*Part No. on inquiry.

**SPR-CU-AS and AIRflex-KUW-CU only with MSD for EMC-usage.

***Advice: For appropriate tubing/screw connecting combinations choose the same trade size AD (tubing outer-Ø).

Trade Size** AD	Thread DIN 40430 PG	For Types: FLEXAgraff-PU-AS, FLEXAgraff-ME-ASF			For Types: SPR-PVC-EDU-AS, SPR-EDU-PVC			For Types: AIRflex-KUW-EDU AIRflex-KUW-CU*			Packet/Pieces	Weight kg/100p. Approx.
		Conduit Dim.	Smallest Inner-Ø	Part Number	Conduit Dim.	Smallest Inner-Ø	Part Number	Conduit Dim.	Smallest Inner-Ø	Part Number		
0.39 10.0	7	7 x 10	0.23 6.0	969799-1	—	—	—	—	—	—	25	2.80
0.55 14.0	9	11 x 14	0.39 10.0	969799-2	9 x 14	0.33 8.5	5010228009*	9 x 14	0.33 8.5	5010228009*	25	3.90
0.67 17.0	11	13 x 17	0.45 11.5	969799-3	12 x 17	0.43 11.0	5010235011*	12 x 17	0.43 11.0	5010235011*	25	5.90
0.75 19.0	13.5	15 x 19	0.53 13.5	969799-4	14 x 19	0.51 13.0	5010235013*	14 x 19	0.51 13.0	5010235013*	25	7.70
0.83 21.0	16	17 x 21	0.61 15.5	969799-5	16 x 21	0.57 14.5	5010235016*	15 x 21	0.57 14.5	5010235016*	25	9.80
1.06 27.0	21	23 x 27	0.84 21.5	969799-6	21 x 27	0.76 19.5	5010201021*	20 x 27	0.76 19.5	5010235021*	10	13.10
1.42 36.0	29	29 x 36	1.08 27.5	969799-7	28 x 36	1.08 27.5	969799-7	28 x 36	1.08 27.5	969799-7	10	23.30

*Part No. on inquiry.

**Advice: For appropriate tubing/screw connecting combinations choose the same trade size AD (tubing outer-Ø).

Connections with Ferrules (Continued)

Material

Polished brass or plastic depending on conduit type.

USW-P

(IP 40 – IP 66) (Continued)



Trade Size* AD	Thread DIN 40430 PG	For Types: AIRflex-KUW/ AIRflex-KUW-PU, AIRflex-GRS, AIRflex-K			Packet/ Pieces	Weight kg/100 p. Approx.
		Conduit Dim.	Smallest Inner-Ø	Part Number		
0.39 10.0	7	7 x 10	0.23 6.0	969801-1	25	2.60
0.55 14.0	9	10 x 14	0.35 9.0	969801-2	25	3.60
0.67 17.0	11	13 x 17	0.45 11.5	969801-3	25	5.70
0.75 19.0	13.5	15 x 19	0.51 13.0	969801-4	25	7.50
0.83 21.0	16	16 x 21	0.57 14.5	969801-5	25	9.60
1.06 27.0	21	21 x 27	0.76 19.5	969801-6	10	12.30
1.42 36.0	29	29 x 36	1.04 26.5	969801-7	10	22.10

*Advice: For appropriate tubing/screw connecting combinations choose the same trade size AD (tubing outer-Ø).



Trade Size** AD	Thread DIN 40430 PG	For Type: FLEXAgraff-SI-ASF			For Type: FLEXAgraff-CU mit MSD (EMV)			For Type: K-EDU			Packets/ Pieces	Weight kg/100 p. Approx.
		Hose Dim.	Smallest Inner-Ø	Part Number	Hose Dim.	Smallest Inner-Ø	Part Number	Hose Dim.	Smallest Inner-Ø	Part Number		
0.39 10.0	7	6 x 10	0.19 5.0	5010237007*	7 x 10	0.23 6.0	969800-1	6 x 10	0.23 6.0	5010232007*	25	2.80
0.55 14.0	9	10 x 14	0.43 11.0	5010237009*	11 x 14	0.39 10.0	969800-2	9 x 14	0.33 8.5	5010232009*	25	3.90
0.67 17.0	11	12 x 17	0.41 10.5	5010237011*	13 x 17	0.45 11.5	969800-3	12 x 17	0.45 11.5	5010232011*	25	5.90
0.75 19.0	13.5	14 x 19	0.49 12.5	5010237013*	15 x 19	0.53 13.5	969800-4	14 x 19	0.53 13.5	5010232013*	25	7.70
0.83 21.0	16	16 x 21	0.57 14.5	5010235016*	17 x 21	0.61 15.5	969800-5	16 x 21	0.61 15.5	5010232016*	25	9.80
1.06 27.0	21	21 x 27	0.76 19.5	5010201021*	23 x 27	0.84 21.5	969800-6	21 x 27	0.80 20.5	5010232021*	10	13.10
1.42 36.0	29	27 x 36	1.04 26.5	5010237029*	29 x 36	1.08 27.5	969800-7	28 x 36	1.08 27.5	5010232029*	10	23.30

*Part No. on inquiry.

**Advice: For appropriate tubing/screw connecting combinations choose the same trade size AD (tubing outer-Ø).

Connections with Ferrules (Continued)

Performance

Characteristics

Conduit Connection, Screwed, 45°.

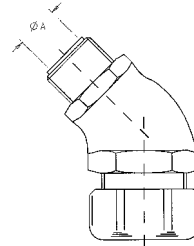
Material

Connector Body, Pressure Nut &

Ferrule: Galvanized Steel.

Sealing Ring: Elastic Plastic.

EW 45-P



Trade Size* AD	Thread DIN 40430 PG	Conduit Dim.	Smallest Inner-Ø	Part Number	Packet/ Pieces
0.38 9.5	11	12.5 x 18	0.43 11.0	796314-1	25
0.38 9.5	13.5	12.5 x 18	0.43 11.0	796314-2	25
0.50 12.7	16	16 x 21	0.57 14.5	796314-3	25
0.75 19.1	21	21 x 26.5	0.77 19.5	796314-4	10
1.00 25.4	29	26.5 x 33	0.98 24.8	796314-5	5
1.25 31.8	36	35.5 x 42	1.31 33.2	796314-6	5
2.00 50.8	48	51.5 x 60	1.95 49.6	796314-7	1

***Advice: For appropriate tubing/screw connecting combinations choose the same trade size AD (tubing outer-Ø).**

Connections with Ferrules (Continued)

Performance Characteristics

Multipart safety-type screwed conduit connection with integrated ferrule and with PG connecting thread DIN 40430 for all strip wound plastic conduit types.

Construction

Connector body with hexagon key surface, rigid steel conduit connecting thread DIN 40430 or metric ISO thread acc. EN 60423, hexagon pressure nut, sealing ring of plastic, to accept ferrules of plastic.

Material

Connector body, hexagon pressure nut and ferrule:
high-grade resistant plastic (PP)

Sealing ring:
Thermoplastic elastomer

Properties

Security conduit fitting with high dust-, waterproof, and friction-type locking of conduit and screw connection.

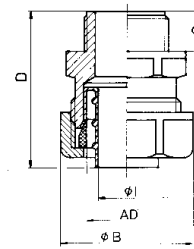
Protective system

IP 65 acc. EN 60529

Temperature range

From approx. -10°C up to approx. +110°C

USK-P (IP 65)



Application

Optimum protective conduit fitting, as protective insulated screw connection, appropriate according to the specifications EN 60204 in machine and installation construction.

Suitable for conduit types

For all protective plastic conduit types except type **ROHRflex**.

Important

Security of the screwed conduit connection is only guaranteed with the correspondent ferrule.

Trade Size** AD	Packet/Pieces	USK-P (Grey) Part Number	Thread DIN 40430 PG	Smallest Inner-Ø Ø I	Largest Inner-Ø Ø B	Length of Thread C	Total Length D	Wrench Size Body	Across Flats of Pressure Nut	Packet/Pieces	Weight kg/ 100 p. Approx.
0.39 10.0	10	969802-1	7	6	20	10	40	16	18	50	0.6
0.55 14.0	10	969802-2*	9	9	25	10	41	21	23	50	1.0
0.67 17.0	10	969802-3*	11	11	30	10	41	24	27	50	1.3
0.75 19.0	10	969802-4	13.5	13	32	10	41	26	29	50	1.7
0.83 21.0	10	969802-5*	16	14.5	35	11	42	29	32	50	2.0
1.06 27.0	10	969802-6	21	19.5	44	11	48	36	40	25	2.9
1.42 36.0	2	969802-7	29	27	54	12	48	45	49	25	3.9
1.77 45.0	2	969802-8	36	36	63	12	48	53	58	25	6.0
2.20 56.0	2	969802-9	48	46	77	15	57	65	70	10	8.4

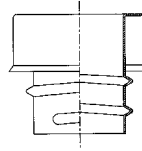
*with NEMKO-Approval

**Advice: For appropriate tubing/screw connecting combinations choose the same trade size AD (tubing outer-Ø).

Connections with Ferrules (Continued)

Terminal Sleeve, Tubing Connector.

EE



Trade Size AD	Conduit Dim.	Smallest Inner-Ø	Part Number	Packet/Pieces	Approx. Weight kg/100p
0.39 10.0	7 x 10	0.24 6.0	796313-1	50	0.32
0.55 14.0	11 x 14	0.39 10.0	796313-2	50	0.32
0.67 17.0	13 x 17	0.45 11.5	796313-3	50	0.50
0.75 19.0	15 x 19	0.53 13.5	796313-4	50	0.57
0.83 21.0	17 x 21	0.61 15.5	796313-5	50	0.64
1.06 27.0	23 x 27	0.85 21.5	796313-6	25	1.00
1.42 36.0	29 x 36	1.08 27.5	796313-7	25	1.48
1.77 45.0	38 x 45	1.44 36.5	796313-8	25	2.01
2.20 56.0	49 x 56	1.87 47.5	796313-9	10	2.80

Chemical Resistance of Plastic Materials

Reagent	Concentration %	at temp. +°C	PU polyurethane	Soft PVC	Megolon ME	Polypropylene PP	Polyamide PA	Silicon SI
Acetaldehyde	100	20	+	-			40% o	
Acetic acid	10	20	o	+		+	o	
Acetone	100	20	-	-	o	+	+	+
Acrylic acid ethyl ester/acrylic resin lacquer	100	20		-			30% -	
Allyl alcohol	96	20	-	-		+	30% o	
Alum, hydrous	dilute	40		+		+		
Aluminum chloride, hydrous	dilute	40	+	+	o	+		o
Aluminum sulphate, hydrous	dilute	40	+	+	o	+		+
Ammonia solution	any	20	o	+		+	20% +	+
Ammonium chloride, hydrous	any	60	+	+	o	+		
Ammonium nitrate, hydrous	dilute	40	+	+		+		
Ammonium sulphate, hydrous	dilute	40	+	+	o	+		
Aniline, pure	100	20	-	-	o	+	o	+
Aniline hydrochloride, hydrous	saturated	20		+				
Benzaldehyde, hydrous	0.3	20		-		+	pure o	
Benzine	100	20	+	-		o	+	o
Benzoic acid	any	40	+	+		+		
Benzol	100	20	-	-		o	+	o
Bleaching liquor	12.5 cl	20		+		o		
Borax, hydrous	dilute	40		+		+		
Boric acid	dilute	40	-	+		+	o	
Boron	50	40		-			o	
Bromine, liquid	100	20	-	-		-	-	-
Butanediol	10	20	o	+		+	pure +	
Butanol	100	20	+	-		+		o
Butylacetate	100	20	-	-	o	o		o
Butyl alcohol	100	20	o	-		+		
Calcium chloride, hydrous	any	40	+	+	o	+	10% +	
Calcium nitrate, hydrous	50	40	+	+		+		
Carbamide, hydrous	10	40	+	+		+	20% +	
Carbon bisulphide	100	20	+	-		+	o	o
Carbon monoxide	100	60	+	+	o	+		
Carbon tetrachloride	100	20	+	-	o	o	+	
Carbonic acid	100	60	+	+		+		+
Caustic potash solution	50	20	o	o		+	+	o
Chlorine	any	20	-	-		-	-	-
Chrome alum, hydrous	dilute	40		+		+		
Citric acid	10	40	o	o		+		+
Copper monochloride, hydrous	saturated	20	+	+		+		
Copper sulphate, hydrous	any	40	+	+		+		
Cresol, hydrous	90	20	-	-		+	pure -	
Cyclohexanol	100	20	-	-		+	+	
Developer agent		40	+	+				
Dichloromethane	100	20	-	-		-	o	o
Diethyl ether	100	20	-	-		o	30% +	
Ethyl alcohol, hydrous	10	20	+	+	o	+	o	
Ethylene dichloride	100	20	-	-	o	o		
Ethylene oxide, liquid	100	20		-				
Ferric cyanide, hydrous	any	60		+		+		
Ferrous chloride, hydrous	10	40	+	+		+	o	
Fluorosilicic acid	30	20		+			+	

+ stands for: resistant
 o stands for: conditionally resistant
 - stands for: not resistant

Chemical Resistance of Plastic Materials (Continued)

Reagent	Concentration %	at temp. +°C	PU polyurethane	Soft PVC	Megolon ME	Polypropylene PP	Polyamide PA	Silicon SI
Fluorine	50	40		-			-	-
Formaldehyde, hydrous	dilute	40	o	+		+	pure +	
Formic acid, hydrous	100	20	-	-		+	10% o	+
Glacial acetic acid	100	20		-		+		
Glucose, hydrous	any	20	+	+		+		
Glycerol trinitrate	dilute	20						
Hydrobromic acid, hydrous	10	40	-	+		+	-	
Hydrochloric acid	10	30-40		-	o			+
Hydrochloric acid, hydrous	10	20	-	+		+	20% -	
Hydrogen	100	60	+	+	o		+	30% +
Hydroxylamine sulphate, hydrous	12	35	+	+				
Kerosine			+		o			o
Lactic acid, hydrous	50	20	o	+		+	pure +	
Magnesium carbonate	any	20	+	+				
Magnesium chloride, hydrous	any	20	+	+		+	10% o	+
Mercury		60	+	+		+	+	
Methyl alcohol	100	20	o	-	o	+		+
Methylenchlorid	100	20	-	-	o	-		o
Nickel chloride, hydrous	any	20	+	+		+	10% o	+
Nickel sulphate, hydrous	any	20	+	+		+	10% o	+
Nitric acid, hydrous	6	20	-	+	o	+	50% -	o
Oil and grease		20	+	o	+	+	+	o
Oleic acid	100	20	o	o	o	+	+	
Oxalic acid	saturated	20	o	+		+	10% o	o
Ozone	100	20	o	o		o	o	+
Phosgene, liquid	100	20	-	-				
Phosphoric acid, hydrous	dilute	20	o	+		+	10% -	+
Phosphorus pentoxide	100	20		o		+		
Potassium dichromate, hydrous	40	20	+	+		+		20% +
Potassium bromide, hydrous	any	60	o	+		+	10% +	
Potassium carbonate, hydrous	saturated	40	+	+				
Potassium chloride, hydrous	any	20	+	+		+	10% +	+
Potassium nitrate	any	20	+	+		+	10% +	+
Potassium permanganate, hydrous	6	20	-	+		+		
Potassium persulphate, hydrous	dilute	40	+	+		+		+
Sea water		40	+	+	+	+	+	+
Soap solution, hydrous	concentrated	20	+	+	+	+	o	+
Sodium chlorate, hydrous	any	20		+		+	10% o	
Sodium chloride solution	any	40	+	+	+	+		
Sodium hydroxide solution	10	20	o	+	o	+	10% +	
Sulphide, hydrous	dilute	40		+		+		
Sulphuric acid	10	20	+	+		+	80% -	+
Tin dichloride, hydrous	dilute	40	+	o		+		
Toluene	100	20	+	-	o	o	+	o
Trichloroethylene	100	20	-	-	o	o	o	
Vinyl acetate	100	20	-	-				
Waste-gas, containing carbon acid	any	60	+	+		+		
Waste-gas, containing CO	any	60	+	+		+		
Xylene	100	20	+	-	o	o	+	o
Zinc chloride, hydrous	dilute	60	+	o		+	10% o	
Zinc sulphate, hydrous	dilute	60	+	o		+		+

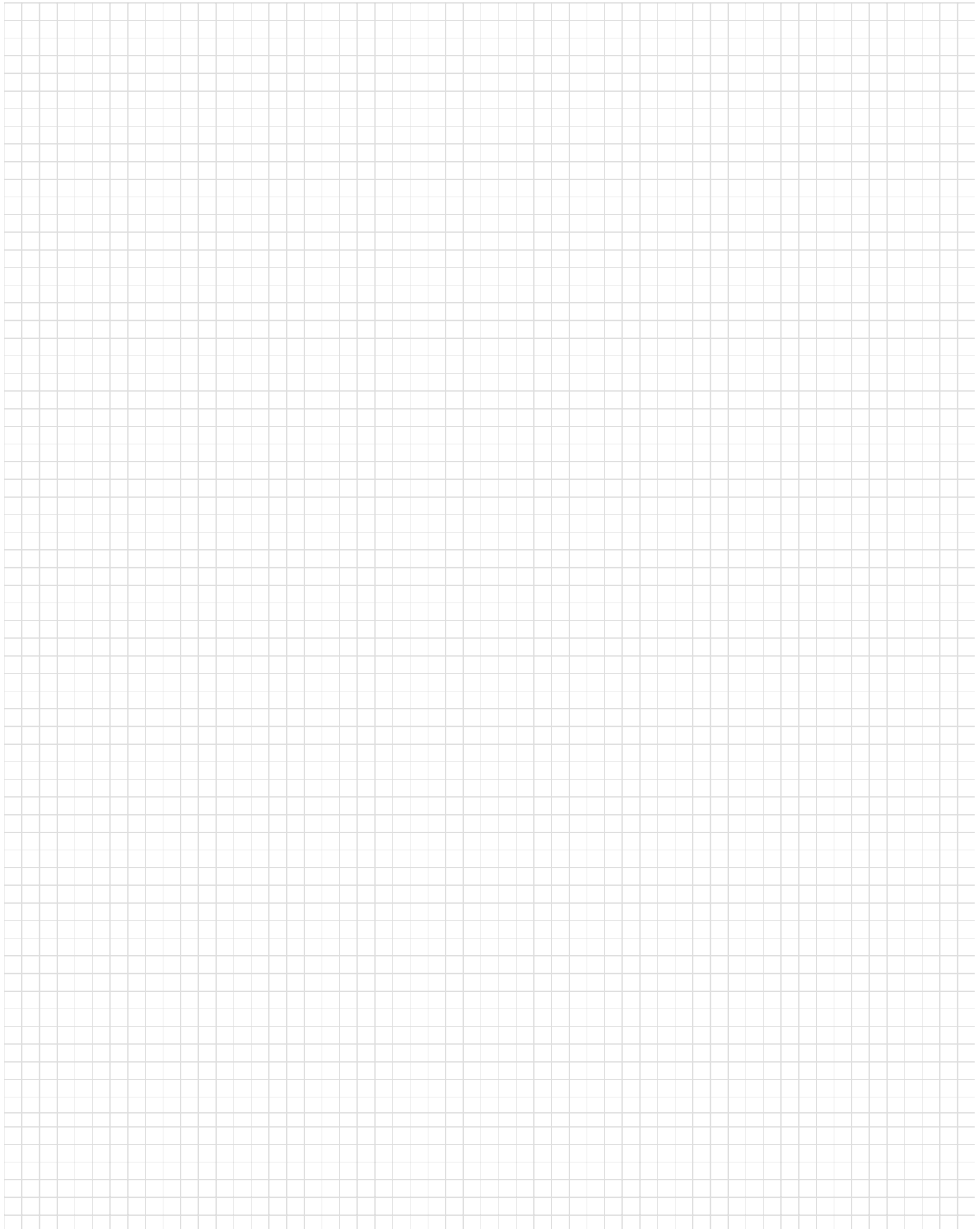
+ stands for: resistant
o stands for: conditionally resistant
- stands for: not resistant

Part Number Index

Note: This index lists all cataloged parts by base no. only. Complete part nos. (with prefixes and/or suffixes) are shown on the page(s) indicated.

Part No.	Page	Part No.	Page	Part No.	Page
241109	37	969784	40	969815	22
796253	12, 14	969785	41	969816	22
796254	19	969786	42	969817	2, 16
796255	2, 32	969787	43	969818	16
796256	31, 32	969788	45	969819	18
796257	2, 31, 32	969789	2, 6	969820	18
796258	32	969790	6	969821	23
796259	33	969791	7	969822	23
796260	2, 34	969792	9	969823	23
796261	33	969793	9	969824	23
796262	34	969794	47	969825	23
796281	27	969795	47,48	969826	23
796282	28	969796	49	969827	23
796283	11	969797	48	969828	23
796284	17	969798	50	969829	23
796313	54	969799	50	969830	23
796314	52	969800	51	969831	10
796361	9	969801	51	969832	10
796368	33	969802	53	969833	10
796369	36	969803	2, 10	969834	10
796372	36	969804	10	969835	24
796384	26	969805	13	969836	24
796402	46	969806	13	969837	25
796472	8	969807	2, 22	969838	25
796473	34	969808	22	969839	29
796493	21	969809	2, 22	969840	29
796541	46	969810	22	969847	35
796550	30	969811	2, 22	969848	35
796790	8	969812	22	969849	37
796808	15	969813	2, 22		
796809	20	969814	22		

Engineering Notes



Americas

Argentina – Buenos Aires
Phone: +54-11-4733-2200
Fax: +54-11-4733-2250

Brasil – São Paulo
Phone: +55-11-3611-1311
Fax: +55-11-3611-0397

Canada – Markham
Phone: +905-475-6222
Fax: +905-474-5520
**Product Information Center:
(Technical Support)**
Phone: +905-470-4425
Fax: +905-474-5525

Colombia – Bogota
Phone: +57-1-240-9396
Fax: +57-1-660-0206

Mexico – Mexico City
Phone: +52-55-5-729-0425
Fax: +52-55-5-398-1430

United States – Harrisburg, PA
Phone: +717-564-0100
Fax: +717-986-7575
**Product Information Center:
(Technical Support)**
Phone: +800-522-6752
Fax: +717-986-7575

**For Latin/South American
Countries not shown**
Phone: +57-1-240-9396
Fax: +57-1-660-0206

Asia/ Pacific

Australia – Sydney
Phone: +61-2-9840-8200
Fax: +61-2-9899-5649
**Product Information Center:
(Technical Support)**
Phone: +61-2-9554-2600
Fax: +61-2-9502-2556

India – Bangalore
Phone: +91-80-841-0200
Fax: +91-80-841-0210

Indonesia – Jakarta
Phone: +6221-526-7852
Fax: +6221-526-7856

Japan – Kawasaki, Kanagawa
Phone: +81-44-844-8079
Fax: +81-44-844-8733
**Product Information Center:
(Technical Support)**
Phone: +81-44-844-8013
Fax: +81-44-812-3200
Raychem Products
Phone: +81-44-900-5102
Fax: +81-44-5025-5027

Korea – Seoul
Phone: +82-2-3274-0535
Fax: +82-2-3274-0524/0531

Malaysia – Selangor
Phone: +60-3-7053055
Fax: +60-3-7053066

New Zealand – Auckland
Phone: +64-9-634-4580
Fax: +64-9-634-4586

Philippines – Makati City
Phone: +632-867-8641
Fax: +632-867-8661

People's Republic of China
Hong Kong
Phone: +852-2735-1628
Fax: +852-2735-0243

Shanghai
Phone: +86-21-6485-0602
Fax: +86-21-6485-0728

Shunde
Phone: +86-765-775-1368
Fax: +86-765-775-2823

Singapore – Singapore
Phone: +65-482-0311
Fax: +65-482-1012

Raychem Products
Phone: +65-486-6151
Fax: +65-654-5514

Taiwan – Taipei
Phone: +886-2-2664-9977
Fax: +886-2-2664-9900

Thailand – Bangkok
Phone: +66-2-955-0500
Fax: +66-2-955-0505

Vietnam – Ho Chi Minh City
Phone: +84-8-8232-546/7
Fax: +84-8-8221-443

Europe/ Middle East/ Africa

Austria – Vienna
Phone: +43-190-560-0
Fax: +43-190-560-1333

Belgium – Kessel-Lo
Phone: +32-16-352-300
Fax: +32-16-352-352

Bulgaria – Sofia
Phone: +359-2-971-2152
Fax: +359-2-971-2153

Czech Republic – Kurim
Phone: +420-5-41-162-111
Fax: +420-5-41-162-223

Denmark – Viby J
Phone: +45-70-15-52-00
Fax: +45-86-29-51-33

Egypt – Cairo
Phone: +20-2-417-76-47
Fax: +20-2-419-23-34

Estonia – Tallinn
Phone: +372-65-05-474
Fax: +372-65-05-470

Finland – Helsinki
Phone: +358-95-12-34-20
Fax: +358-95-12-34-250

France – Cergy-Pontoise
Phone: +33-1-3420-8888
Fax: +33-1-3420-8600
**Product Information Center:
(Technical Support)**
Phone: +33-1-3420-8943
Fax: +33-1-3420-8623

France
Tyco Electronics Export –
St Ouen L'Aumone
Phone: +33-1-3440-7200
Fax: +33-1-3440-7220 or
+33-1-3440-7230

Germany – Bensheim
Phone: +49-6251-133-0
Fax: +49-6251-133-1600
**Product Information Center:
(Technical Support)**
Phone: +49-6251-133-1999
Fax: +49-6251-133-1988

Germany – Langen
Phone: +49-6103-709-0
Fax: +49-6103-709-1223

Germany – Speyer
Phone: +49-6232-30-0
Fax: +49-6232-30-2243

Germany
HTS Division – Neunkirchen
Phone: +49-2247-305-0
Fax: +49-2247-305-122

Great Britain –
Stanmore Middlesex
Phone: +44-181-954-2356
Fax: +44-181-954-6234
**Product Information Center:
(Technical Support)**
Freephone GB: 0800-267-666
Phone: +44-141 810 8967...69
Fax: +44-141 810 8971
Great Britain – Dorcan, Swindon
Raychem Products
Phone: +44-1793-528171
Fax: +44-1793-572516

Greece – Athens
Phone: +30-1-9370-396/397
Fax: +30-1-9370-655

Hungary – Budapest
Phone: +36-1-289-1000
Fax: +36-1-289-1010

Ireland – Dublin
Phone: +353-1-820-3000
Fax: +353-1-820-9790

Israel – Yokneam
Phone: +972-4-959-0508
Fax: +972-4-959-0506

Italy – Collegno (Torino)
Phone: +39-011-4012-111
Fax: +39-011-4031-116

Lithuania – Vilnius
Phone: +370-5-21-31-402
Fax: +370-5-21-31-403

Netherlands – 's-Hertogenbosch
Phone: +31-73-6246-246
Fax: +31-73-6212-365
**Product Information Center:
(Technical Support)**
Phone: +31-73-6246-999
Fax: +31-73-6246-998

Norway – Nesbru
Phone: +47-66-77-88-99
Fax: +47-66-77-88-55

Poland – Warsaw
Phone: +48-22-5490-888
Fax: +48-22-5490-880

Romania – Bucharest
Phone: +40-1-311-3479+3596
Fax: +40-1-312-0574

Russia – Moscow
Phone: +7-095-926-55-06...09
Fax: +7-095-926-55-05

Russia – St. Petersburg
Phone: +7-812-325-30-83
Fax: +7-812-325-32-88

Scotland – Dundee
Madison Cable Products
Phone: +44-1382-508080
Fax: +44-1382-505060

Slovakia – Banská Bystrica
Phone: +421-48-415-20-11/12
Fax: +421-48-415-20-13

Slovenia – Ljubljana
Phone: +386-1561-3270
Fax: +386-1561-3240

South Africa – Port Elizabeth
Phone: +27-41-405-4500
Fax: +27-41-486-1314

Spain – Barcelona
Phone: +34-93-291-0330
Fax: +34-93-201-7879
**Product Information Center:
(Technical Support):**
Phone: +34-93-291-0330
Fax: +34-93-200-3779

Sweden – Upplands Väsby
Phone: +46-8-50-72-50-00
Fax: +46-8-50-72-50-01

Switzerland – Steinach
Phone: +41-71-447-0447
Fax: +41-71-447-0444

Turkey – Istanbul
Phone: +90-212-281-8181...3
+90-212-282-5130/5430
Fax: +90-212-281-8184

Ukraine – Kiev
Phone: +38-044-238-6908
Fax: +38-044-568-5740