

REVISION HISTORY

REVISION	DATE	COMMENT
0	02/20/19	INITIAL RELEASE

NOTES:

1. MATERIALS: "G" STYLE

1.1 SHELL, FERRULE

BRASS PER QQ-B-626

FINISH: GOLD, OVER

ELECTROLESS NICKEL

PER MIL-G-45204, TYP 2, CLASS 1

1.2 INSERT

PEEK, GLASS FILLED PER

MIL-P-46183

1.3 CONTACTS

COPPER ALLOY

FINISH: GOLD PER MIL-G-45204

1.4 GASKETS (OPTIONAL)

SILICONE RUBBER PER AMS 3304

1.5 ALTERNATE SHELL MATERIALS

AND FINISHES:

"M" STYLE: BRASS, WITH

ELECTROLESS NICKEL FINISH

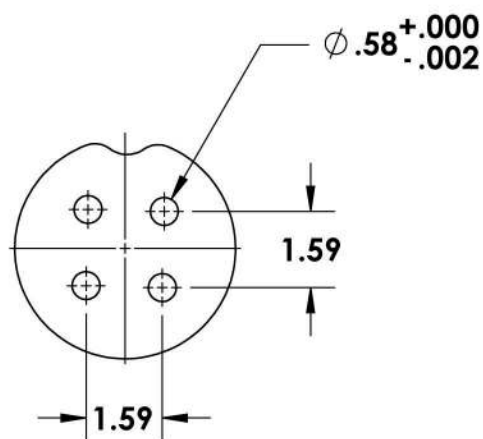
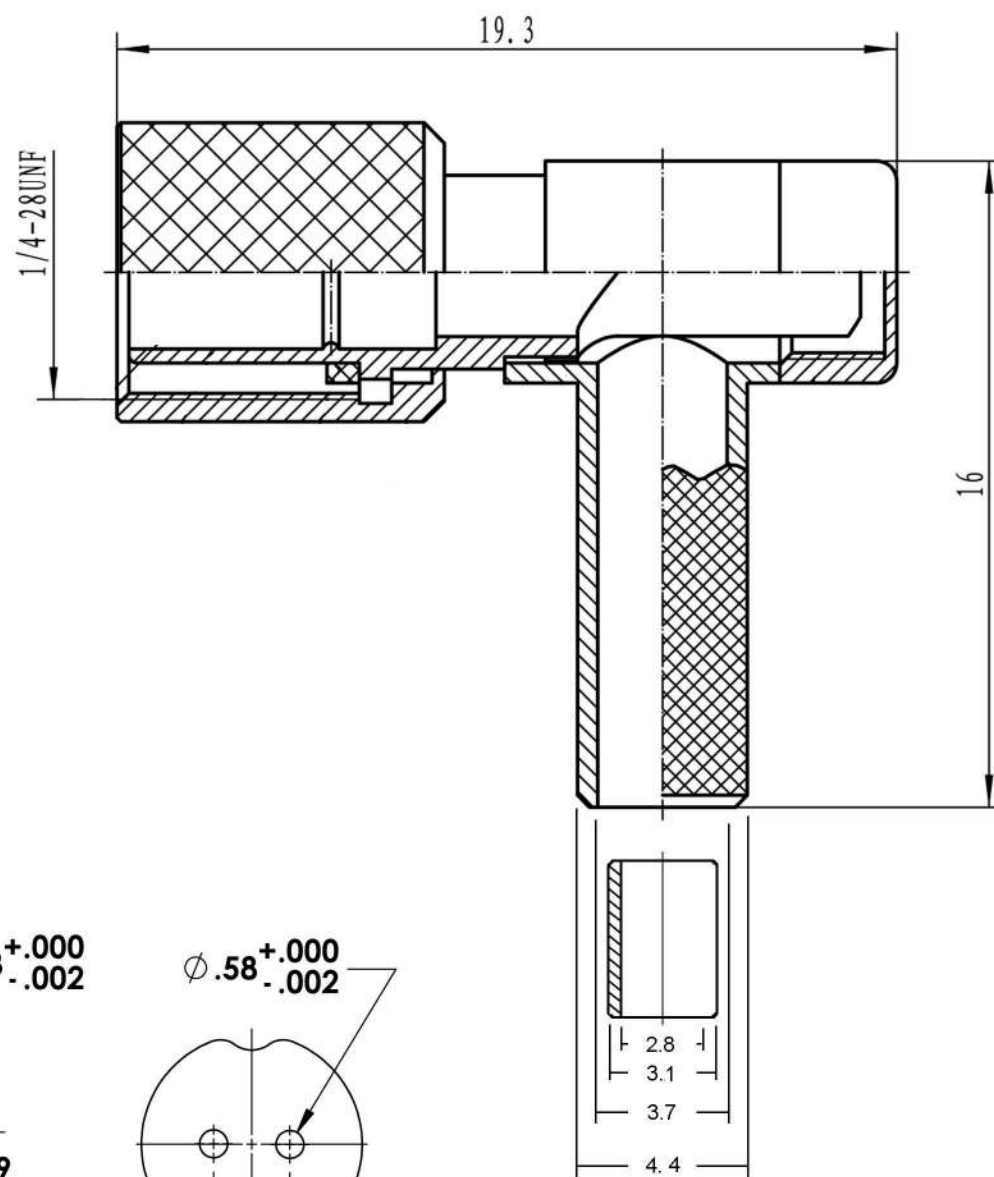
PER AMS-C-26074, CLASS 4, GRADE B

"A" STYLE: BRASS, WITH GOLD PLATE,

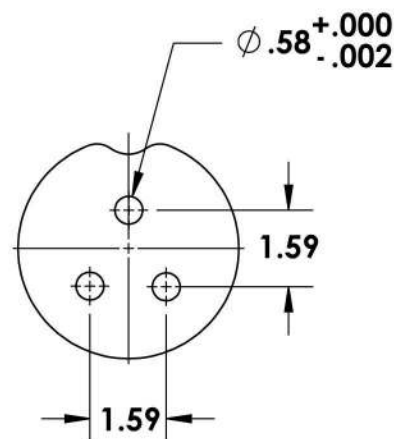
BLACK CHROMATE

"K" STYLE: STAINLESS STEEL,

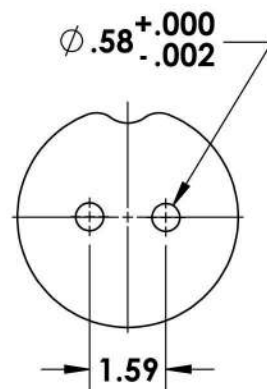
300 SERIES, WITH PASSIVATION



4 POSITION



3 POSITION



2 POSITION

THIS DOCUMENT IS SOLE PROPERTY OF MILSPECWEST AND IS ISSUED IN STRICT CONFIDENCE THAT IT WILL NOT BE REPRODUCED IN ANY WAY OR USED TO SOLICIT BUSINESS OF A COMPETITIVE NATURE. DISTRIBUTION OF THIS DOCUMENT IS PROHIBITED UNLESS WRITTEN CONSENT IS OBTAINED FROM COMPAERO, INC. THIS DOCUMENT IS SUITABLE FOR ENGINEERING EVALUATION AND MAY BE USED IN TECHNICAL SPECIFICATIONS.

UNLESS OTHERWISE NOTED:  
DIMENSIONS ARE IN INCHES  
DO NOT SCALE THIS  
DRAWING

FRACTIONS ARE ±1/16

.XX DECIMALS ARE ±.005  
.XXX DECIMALS ARE ±.003

ANGLES ARE ±2°

DRAWING

RS

CHECKED

TS

Q.A.

KB

MILSPECWEST - MICROCOM PRODUCTS

DESCRIPTION:

PLUG, RIGHT ANGLE

DWG. NO.

MSW - G - BF - 04S

REVISION: 0

SHEET 1 OF 1