

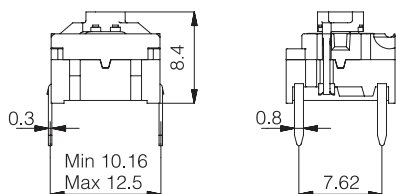
# multimec<sup>®</sup> illumec™ 4A

## Technical Data

- through-hole or SMD
- 50mA/24VDC
- single pole/momentary
- 10,000,000 operations life time
- IP67 sealing
- temperature range:  
high temp. switch: -40/+160°C  
LED: -30/+85°C

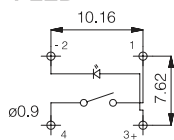


### Dimensions (through-hole)

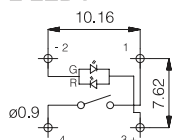


### PCB layout and Circuit Diagram

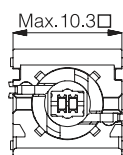
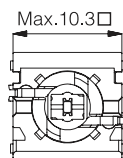
#### 1 LED



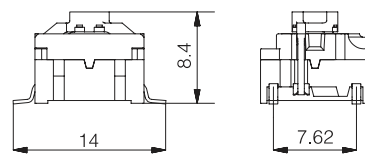
#### 2 LEDs



### Top View

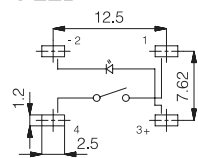


### Dimensions (SMD)

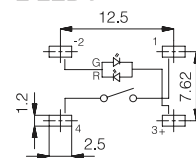


### PCB layout and Circuit Diagram

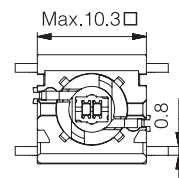
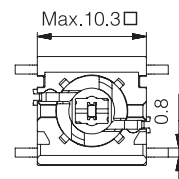
#### 1 LED



#### 2 LEDs



### Top View



Technical specifications for 4A switch and LEDs see pages 35 and 36

## How to order

**4 A**

**Switch** **Mounting**  
**SH9** surface mount  
**TH9** through-hole

+

**LED**  
**01**  
**22**  
**42**  
**61**  
**82**  
**2242**  
**8222**  
**8242**

**Illuminated Cap**  
**1A** 10,12,14,16,18  
**1B** 10,12,14,16,18

**Cap**

**Solid** **Illuminated**  
**Colour** **Lens**

**1H** Solid Colour + lens 1,2,4,6,8

**1C** Solid Colour + lens 1,2,4,6,8 +

**2 C**   or **2 D**

**Bezel** **Solid** **Bezel** **Solid** **Illuminated**  
**Colour** **Colour** **Colour** **Colour** **Lens**

**2 C**   or **2 D**

**Bezel** **Solid** **Bezel** **Solid** **Illuminated**  
**Colour** **Colour** **Colour** **Colour** **Lens**

## Colour codes

**LEDs**  
**01** blue  
**22** green  
**42** yellow  
**61** white  
**82** red  
**2242** green/yellow  
**8222** red/green  
**8242** red/yellow

**Illuminated Caps**  
**10** frosted blue  
**12** frosted green  
**14** frosted yellow  
**16** frosted white  
**18** frosted red

**Lenses**  
**1** transparent  
**2** green  
**4** yellow  
**6** frosted white  
**8** red

## Solid Colours Caps and Bezels

**For 1A, 1B and 2C only:**  
**00** blue  
**02** green  
**03** grey  
**04** yellow  
**06** white  
**08** red  
**09** black  
**30** ultra blue  
**40** dusty blue  
**42** aqua blue  
**32** mint green  
**33** tele grey  
**08** red  
**34** melon  
**38** noble red  
**50** metal dark blue  
**53** metal light grey  
**57** metal dark grey  
**58** metal bordeaux

## Dimensions

**Caps** **See Page**  
**1A - 1H** 11  
**1B - 1C** 10  
**2C - 2D** **Same as for 2A/B** 10

**Ordering example:** 4ASH982 + 1A18 or 4ATH901 + 1B10 + 2C09

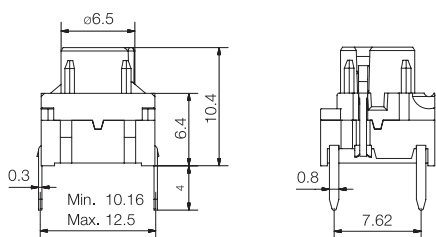
For updates of products and/or changes of specifications please see [www.mec.dk](http://www.mec.dk)

### Technical Data

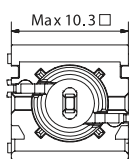
- through-hole or SMD
- 50mA/24VDC
- single pole/momentary
- 10,000,000 operations life time
- IP67 sealing
- temperature range:
  - high temp. switch; -40/+160°C
  - LED: -30/+85°C



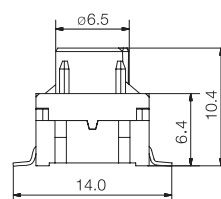
### Dimensions (through-hole)



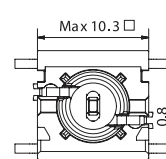
### Top View



### Dimensions (SMD)

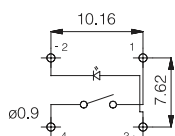


### Top View

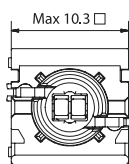
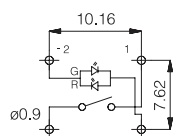


### PCB layout and Circuit Diagram

#### 1 LED

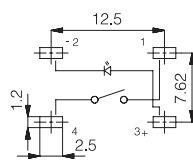


#### 2 LEDS

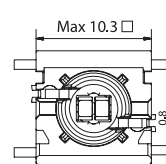
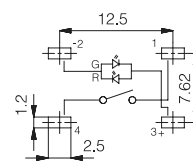


### PCB layout and Circuit Diagram

#### 1 LED



#### 2 LEDS



Technical specifications for 4F switch and LEDs see pages 35 and 36

### How to order

4 F



Switch

Mounting

SH9 surface mount

TH9 through-hole

LED

01

22

42

61

82

2242

8222

8242

Illuminated

Cap



1D



1K, 1KB, 1KC



1N



1S



1T



1U



1V



1WA, 1WD, 1WP



1X

### Colour code

11,16



11,16

Cap

Solid

Colour

Illuminated

Colour

Lens

10,12,14,16,18

1E

Solid Colour

+ lens

1,2,4,6,8

11

1F

Solid Colour

+ lens

1,2,4,6,8

16

1Q

Solid Colour

+ lens

1,6

16

1R

Solid Colour

+ lens

1,6

16

16

11

### Colour codes

#### LEDs

01 blue

22 green

42 yellow

61 white

82 red

2242 green/yellow

8222 red/green

8242 red/yellow

#### Illuminated Caps

10 frosted blue

11 transparent

12 frosted green

14 frosted yellow

16 frosted white

18 frosted red

#### Lenses

1 transparent

2 green

4 yellow

6 frosted white

8 red

### Solid Colours

#### 1E,1F

00 blue

02 green

03 grey

04 yellow

06 white

08 red

09 black

#### 1Q,1R

00 blue

03 grey

08 red

09 black

### Dimensions

#### Caps

1D,1E,1F

1K,1KB,1KC

1N

1Q,1R

1S

1T,1U,1V

1WA,1WD,1WP

1X

#### See Page

15

16

14

18

21

19

17

20

Ordering example: 4FSH98242 + 1D11 or 4FTH922 + 1T16

For updates of products and/or changes of specifications please see [www.mec.dk](http://www.mec.dk)