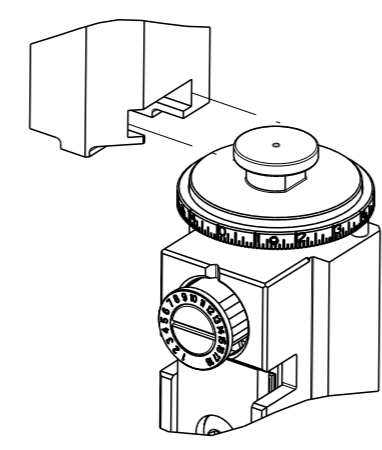


PART NUMBER	REVISION	DESCRIPTION	FEED TYPE
2266225-1	C	FINE CRIMP HEIGHT ADJUST	MECHANICAL
2266225-2	C	FINE CRIMP HEIGHT ADJUST	PNEUMATIC
7-2266225-*	-	SEE CRIMP TOOLING KITS BELOW	-

ATLANTIC VERSION TERMINATOR
INTERFACE ADAPTER

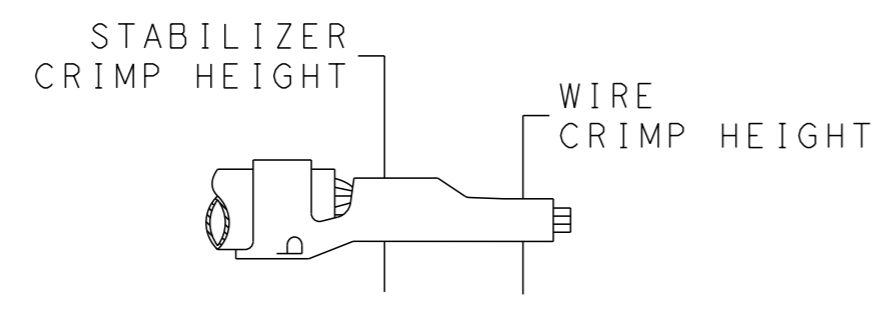


APPLICATOR DATA		
CRIMP	SIZE	TYPE
WIRE	2.79 mm [.110]	F
STABILIZER	2.79 mm [.110]	O
INSULATION	2.79 mm [.110]	SC

APPLICATOR INSTRUCTIONS
408-35042

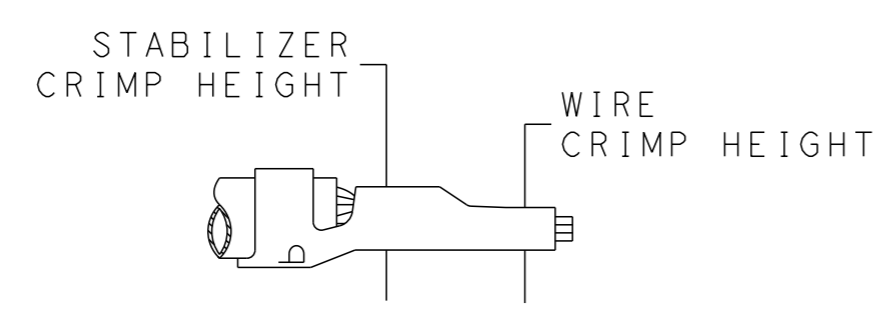
PART NO	REV	WIRE SIZE	WIRE CRIMPER	STABILIZER CRIMPER	INSULATION CRIMPER	ANVIL
7-2266225-7	B	12 AWG	7-456408-6	815664-2	1803146-3	1-1633923-1
7-2266225-8	B	14 AWG	2-456408-5	815664-6	1803146-3	1-1633923-1
7-2266225-9	B	18-16 AWG	2-456408-6	815664-7	1803146-3	1-1633923-1

TERMINAL DATA: TE TERMINAL		TE CRIMP SPECIFICATION	
TERMINAL NAME: AMP-IN			
WIRE STRIP LENGTH		INSULATION DIAMETER RANGE	
4.83-5.59 mm [.190-.220 IN]		Ø2.29-2.54 mm [.090-.100 IN]	
TERMINAL APPLICATION SPECIFICATION	114-1016		
TERMINALS APPLIED			
TE TERMINAL	TE TERMINAL	TE TERMINAL	TE TERMINAL
3-794013-1			



WIRE SIZE	WIRE CRIMP HEIGHT mm [INCH]	WIRE CRIMPER PART NUMBER	STABILIZER CRIMP HEIGHT mm [INCH]	STABILIZER CRIMPER PART NUMBER	CRIMP HEIGHT REFERENCE SETTING
12 AWG	2.16+/-0.05 [.085+/- .002]	7-456408-6	2.79+/-0.05 [.110+/- .002]	815664-2	9.1

TERMINAL DATA: TE TERMINAL		TE CRIMP SPECIFICATION	
TERMINAL NAME: AMP-IN			
WIRE STRIP LENGTH		INSULATION DIAMETER RANGE	
4.83-5.59 mm [.190-.220 IN]		Ø2.29-2.54 mm [.090-.100 IN]	
TERMINAL APPLICATION SPECIFICATION	114-1016		
TERMINALS APPLIED			
TE TERMINAL	TE TERMINAL	TE TERMINAL	TE TERMINAL
3-770060-1			



WIRE SIZE	WIRE CRIMP HEIGHT mm [INCH]	WIRE CRIMPER PART NUMBER	STABILIZER CRIMP HEIGHT mm [INCH]	STABILIZER CRIMPER PART NUMBER	CRIMP HEIGHT REFERENCE SETTING
14 AWG	1.40+/-0.05 [.055+/- .002]	2-456408-5	2.75+/-0.10 [.108+/- .004]	815664-6	7.6
18-16 AWG	1.09+/-0.05 [.043+/- .002]	2-456408-6	2.40+/-0.10 [.094+/- .004]	815664-7	7.8

- 1 RECOMMENDED SPARE PARTS
- 2 REFER TO SUPPLIED INSTRUCTION SHEET FOR CLEANING, LUBRICATION AND STORAGE OF APPLICATOR.
- 3 APPLY PART NUMBER 2-23419-6 LOCTITE TO THREADS OF ITEM 242.
- 4 CRIMP HEIGHT REFERENCE SETTING WAS THE SETTING USED WHEN THE APPLICATOR WAS QUALIFIED AT THE FACTORY. ADJUSTMENT MAY BE NECESSARY WHEN RUNNING APPLICATOR IN THE FIELD.
- 5 THIS APPLICATOR APPLIES SCROLL INSULATION CRIMP DUE TO RESTRICTED INSULATION DIAMETER RANGE.
- 6 UNLESS SPECIFIED OTHERWISE TORQUE VALUES SHALL BE USED PER DOCUMENT, 101-35000.
- 7 ITEMS 1 & 178 TO BE USED WITH 12 AWG ONLY. ITEMS TO BE SHIPPED WITH APPLICATOR.
- 8 ITEMS 253 & 254 TO BE USED WITH 14 AWG ONLY. ITEMS TO BE SHIPPED WITH APPLICATOR.
- 9 ITEMS 255 & 256 TO BE USED WITH 18-16 AWG ONLY. APPLICATOR TO BE SET UP WITH THESE ITEMS.

***WARNING**
ON INSTALLATION, SET WIRE DISC TO CRIMP HEIGHT REFERENCE SETTING FOR LARGEST WIRE SIZE. CRIMP HEIGHT REFERENCE SETTINGS GREATER THAN THE VALUE SHOWN MAY CAUSE DAMAGE TO THE CRIMP TOOLING. REFER TO THE INSTRUCTION SHEET FOR PROPER SETUP AND ADJUSTMENTS.

ATLANTIC VERSION
Shown on sheets 1 of 4 & 2 of 4
(Pacific version shown on sheets 3 of 4 & 4 of 4)

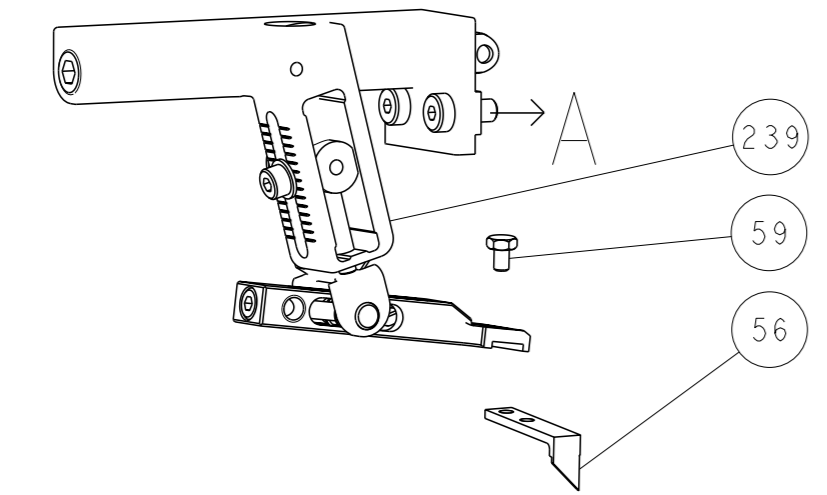
LOC	DIST	REVISIONS					
		P	LY#	DESCRIPTION	DATE	OWN	APVD
A	66	A		RELEASED	13MAR2013	LG	TE
		B		ECR-16-011438	09AUG2016	KH	LZ
		C		ECR-19-006530	24APR2019	TB	CT
		CI		ECR-19-014632	18SEP2019	JAH	RR

9	1	-	-	1	1	2-456408-6	CRIMPER, WIRE PREMIUM	256
9	1	-	-	1	1	815664-7	CRIMPER, WIRE-O	255
8	1	-	1	-	1	2-456408-5	CRIMPER, WIRE PREMIUM	254
8	1	-	1	-	1	815664-6	CRIMPER, WIRE-O	253
		-	-	-	1	2119640-1	PUSH ROD, AIR FEED	250
		-	-	-	1	1803259-1	BUSHING, FLANGED	249
		-	-	-	1	2119641-1	FEED CAM, AIR FEED	248
		-	-	-	1	2119082-6	CAM, SNAIL, INSULATION ADJUSTMENT	244
		-	-	-	1	2079764-1	WASHER, WAVE SPRING, CREST-TO-CREST	243
3		-	-	-	1	2119083-1	RETAINER, INSULATION DIAL	242
		-	-	-	1	7-18023-7	SCR, SKT HD CAP M3 X 4.0	241
		-	-	-	1	2119580-1	MECHANICAL FEED ASSEMBLY	239
		-	-	-	1	2063440-1	AIR FEED MODULE	238
7	1	-	-	1	1	7-456408-6	CRIMPER, WIRE PREMIUM	178
		-	-	-	2	21045-3	RING, RETAIN, EXTERN, 3/16 CRESCENT	172
		-	-	-	REF	994970-2	COUNTER, MAGNETIC	164
		-	-	-	1	240638-1	SPRING, FEED FINGER	163
		-	-	-	1	3-23627-7	PIN, RETAIN, GRVD, 3/16 X .854	137
		-	-	-	1	2119799-1	HOLDER, FEED FINGER, AF	136
		-	-	-	1	2844908-1	SCREW, LOCKING	99
		-	-	-	1	2844907-1	POST, LOCKING	98
		-	-	-	1	455888-5	SPACER, CRIMPER	82
		-	-	-	1	1803607-1	DOCUMENTATION PACKAGE	71
		-	-	-	1	2119791-9	DEPRESSOR, WIRE	70
		-	-	-	1	2119740-1	TAG, IDENTIFICATION	67
		-	-	-	2	2168078-1	SCREW, DRIVE, RH, RoHS, 2 x .188	66
		-	-	-	1	2168083-2	SCR, SKT HD CAP, RoHS, M4 X 8.0	60
		-	-	-	1	5-18022-5	SCR, HEX HD CAP, M4 X 6.0	59
		-	-	-	1	1338685-1	PAWL, FEED	56
		-	-	-	4	2168083-3	SCR, SKT HD CAP, RoHS, M4 X 12.0	54
		-	-	-	1	18023-9	SCR, SKT HD CAP M4 X 6.0	49
		-	-	-	1	2119652-1	FEED CAM, PRE FEED	48
		-	-	-	1	2119653-1	FEED CAM, POST FEED	47
		-	-	-	1	1803583-9	APPLICATOR BASIC ASSEMBLY, SF	46
		-	-	-	1	1803515-1	RAM ASSEMBLY, SF ATLANTIC	44
		-	-	-	1	1803602-1	SCR, BHSC, RoHS (M8 X 25)	41
		-	-	-	1	469465-4	STOP, WIRE	34
		-	-	-	2	2079383-5	SCR, BHSC, RoHS (M4 X 20)	33
		-	-	-	2	2-2844962-8	SPACER, CYLINDRICAL, STRIP GUIDE	30
		-	-	-	1	2844992-1	ASSEMBLY, STRIP GUIDE	29
		-	-	-	1	455888-3	SPACER, CRIMPER	28
		-	-	-	1	1320928-2	STRIP GUIDE	24
		-	-	-	1	2168083-2	SCR, SKT HD CAP, RoHS, M4 X 8.0	21
		-	-	-	2	1-18028-2	WASHER, FLAT, REG M4	20
		-	-	-	1	2119533-3	STRIPPER, SIDE FEED	19
		-	-	-	1	2119806-1	INSERT, SHEAR	13
		-	-	-	1	3-22280-3	SPRING, COMPRESSION	12
		-	-	-	1	1-356885-4	STOP, SHEAR	11
		-	-	-	1	2119805-1	SHEAR HOLDER, FRONT	10
		-	-	-	1	1803095-6	FLOATING SHEAR, FRONT	9
		-	-	-	1	1-1633923-1	ANVIL, COMBINATION	8
		-	-	-	-	-	-	7
		-	-	-	-	-	-	6
		-	-	-	1	1-2119757-0	DEPRESSOR, SHEAR	5
		-	-	-	1	238011-8	BLOCK, CRIMPER SPACER	4
		-	-	-	1	1803146-3	- CRIMPER, INSULATION, SCROLL	3
		-	-	-	1	455888-3	SPACER, CRIMPER	2
		-	-	-	1	815664-2	CRIMPER, WIRE-O	1

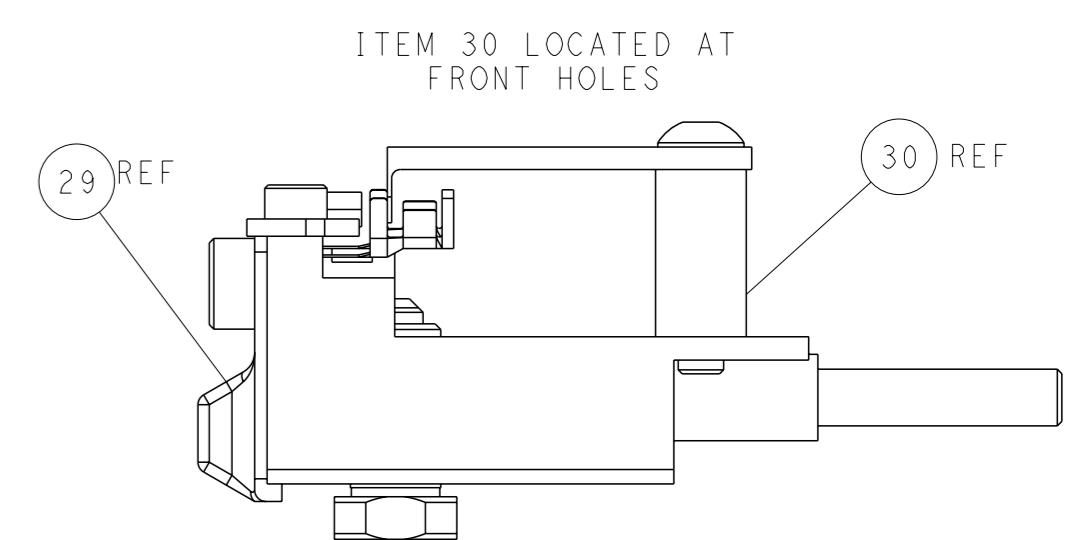
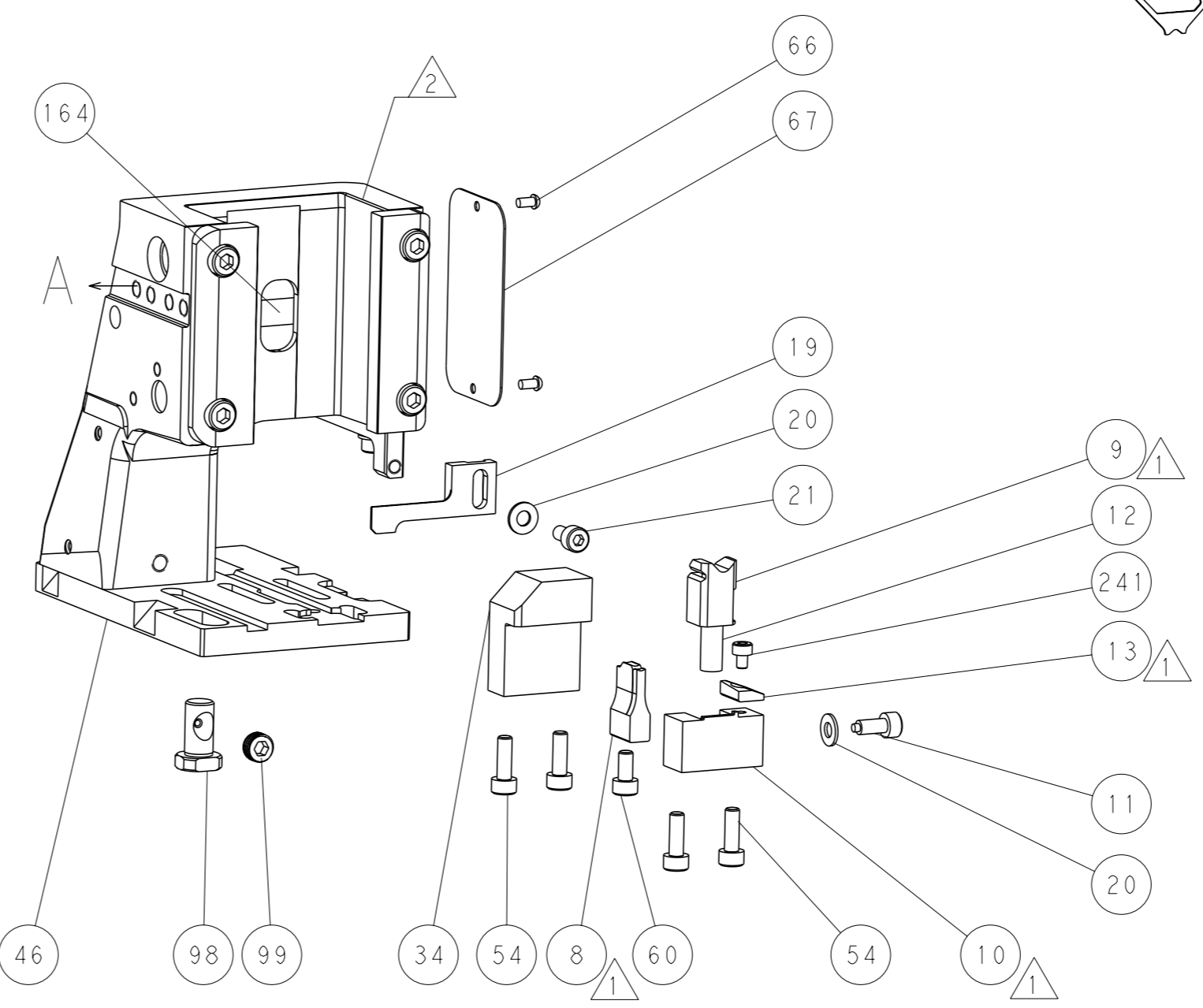
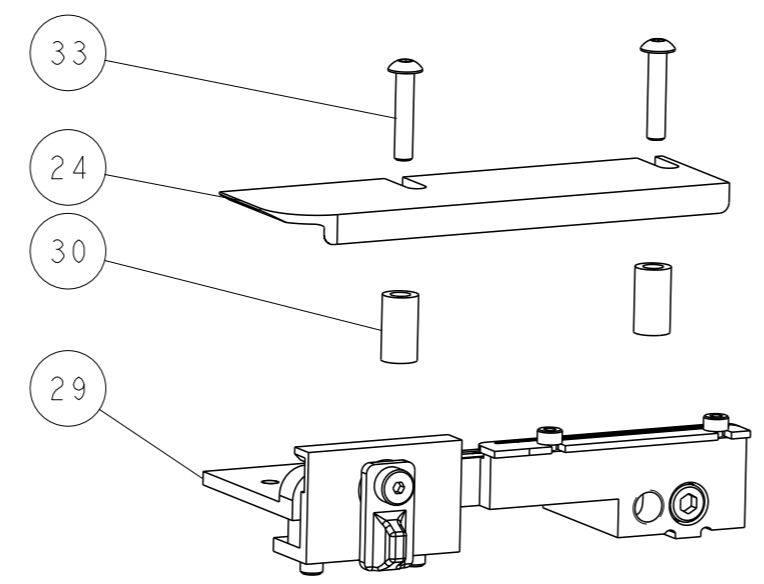
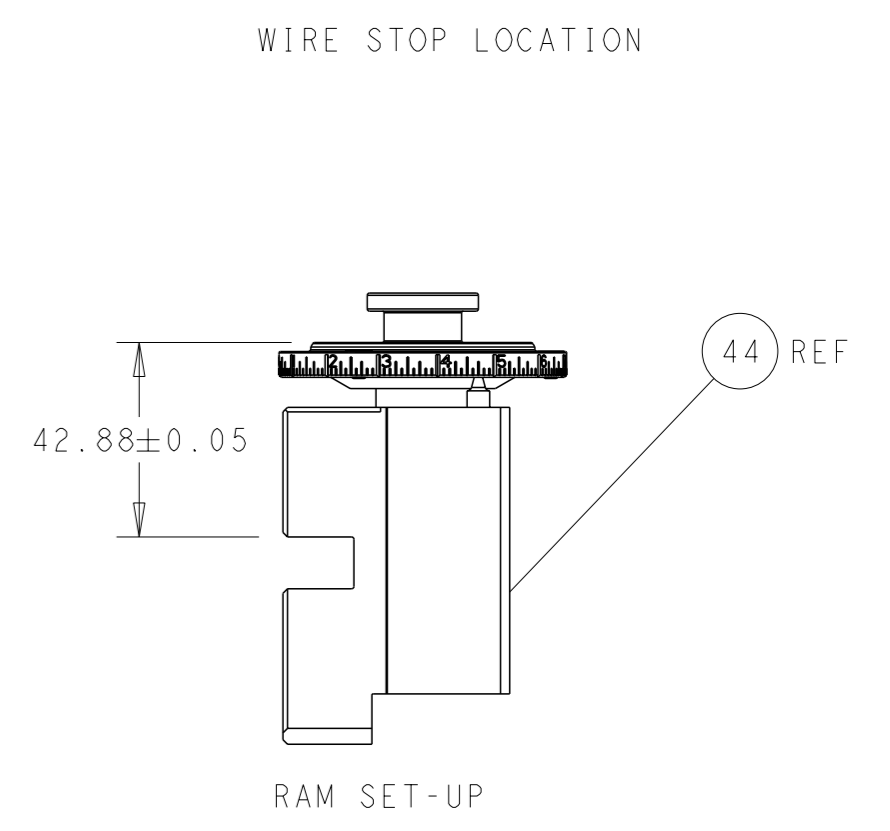
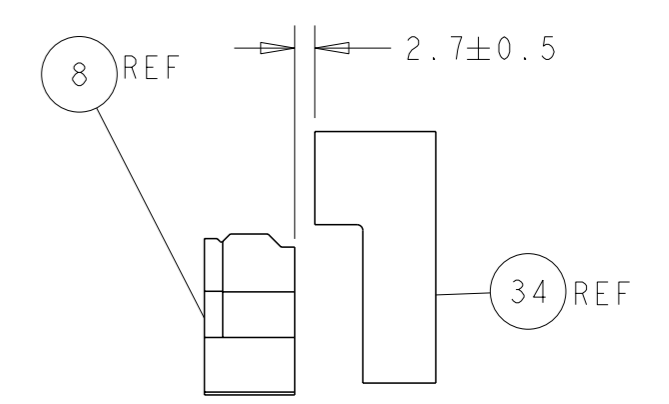
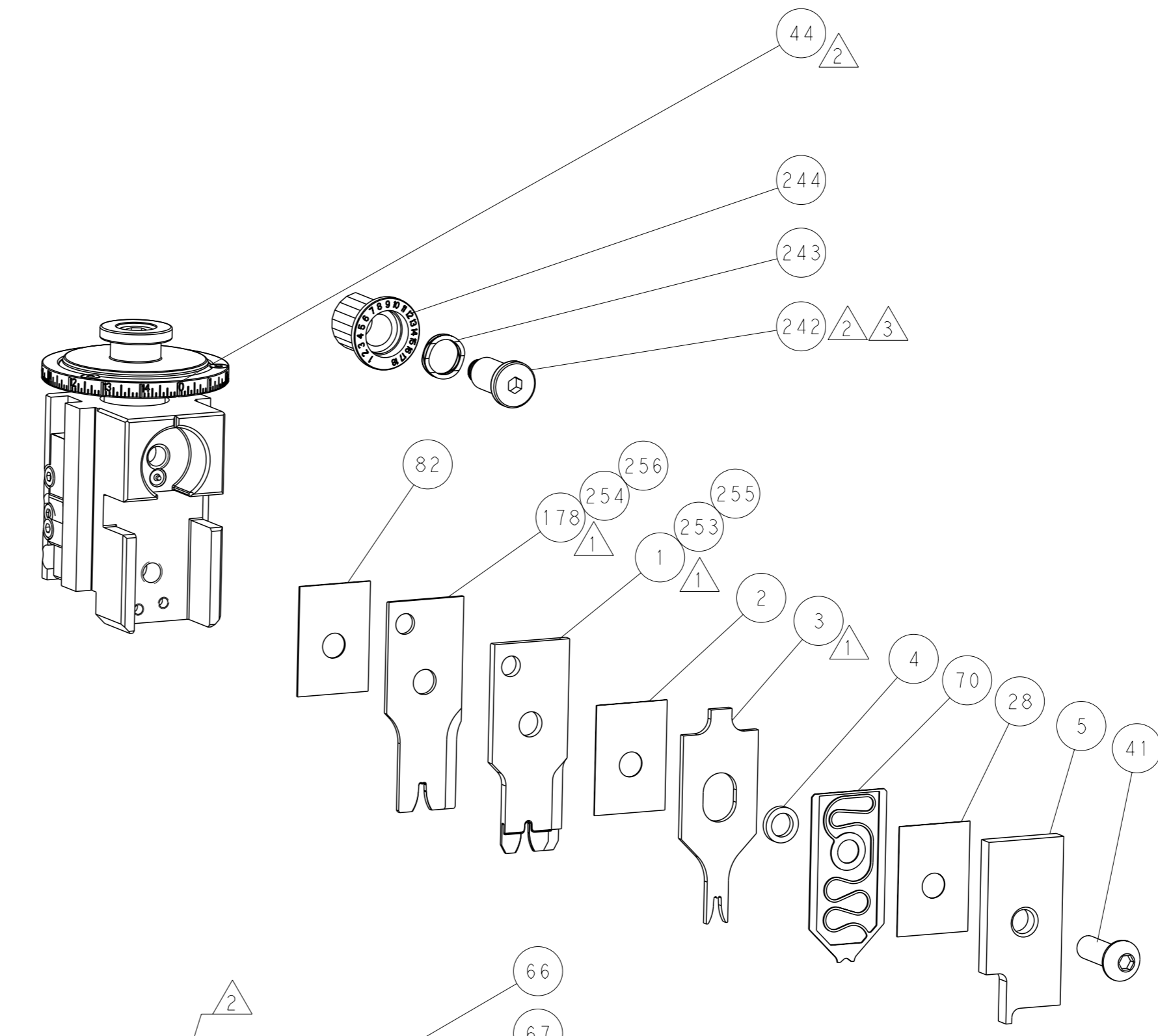
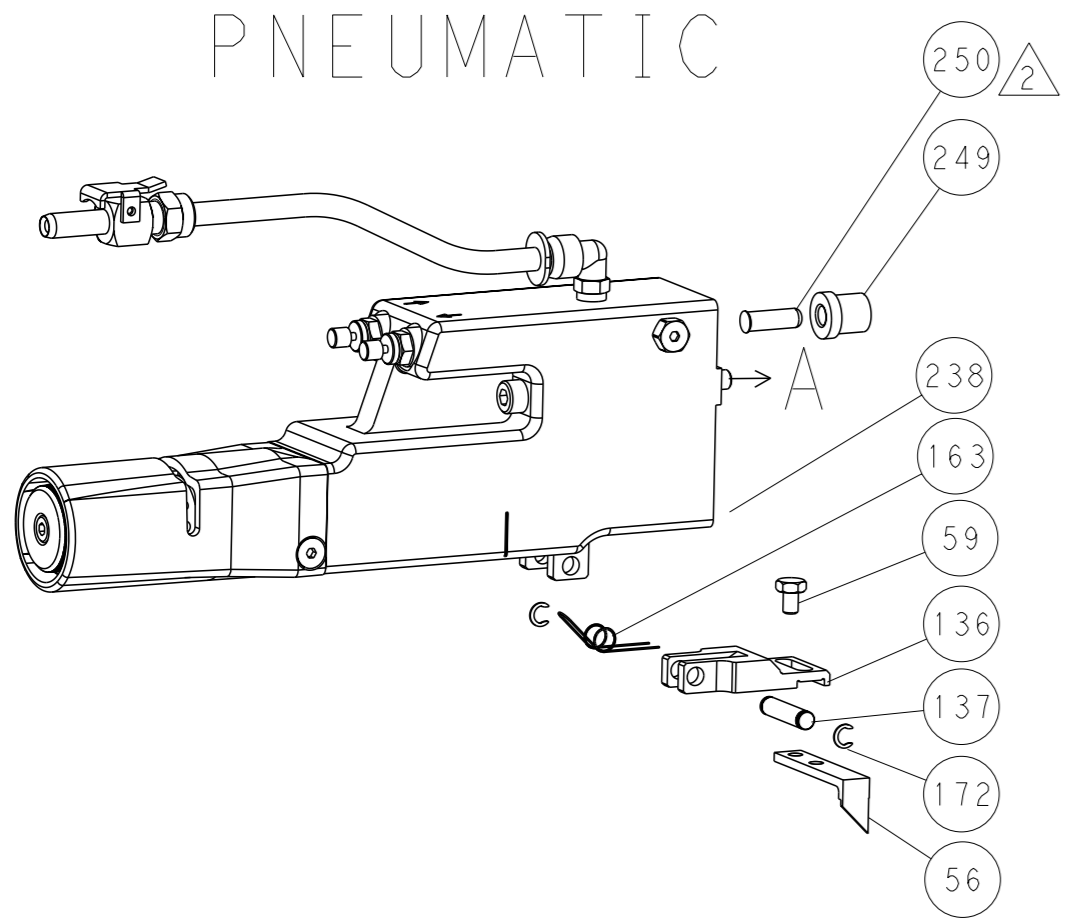
DIMENSIONS:		TOLERANCES UNLESS OTHERWISE SPECIFIED:		APPLICATOR DATA	
mm	0 PLC ±	1 PLC ±	2 PLC ±	3 PLC ±	4 PLC ±
	ANGLES	FINISH		MATERIAL	
MATERIAL		FINISH		WEIGHT	
Customer Accessible Production Drawing		SCALE 1:2		SHEET 1 of 4	

LOC	DIST	REV	DESCRIPTION	DATE	OWN	APVD
A	66		SEE SHEET 1			

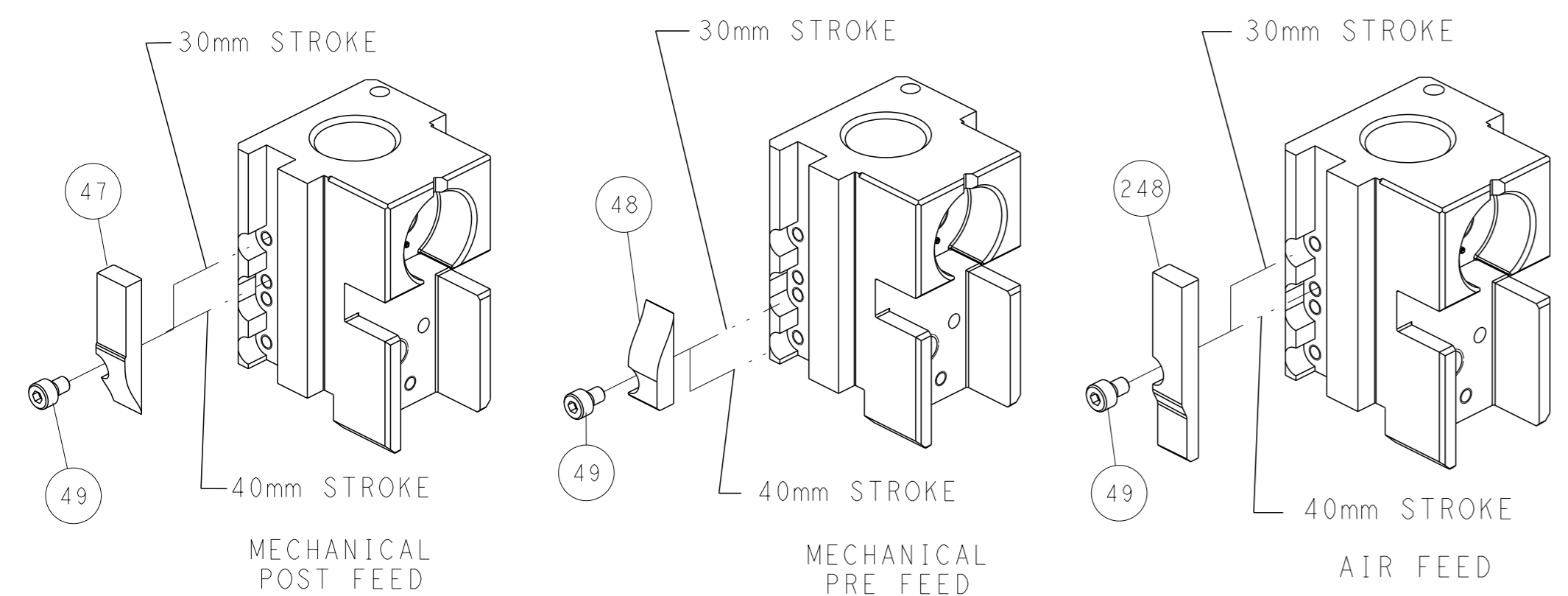
FEED TYPE MECHANICAL



PNEUMATIC



CAM POSITIONS

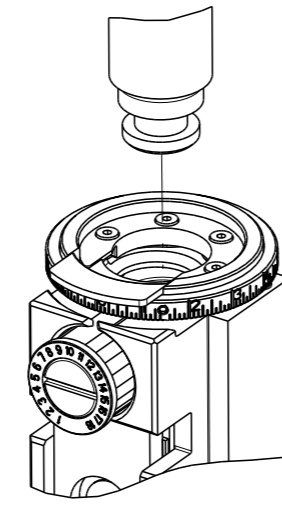


ATLANTIC VERSION
 Shown on sheets 1 of 4 & 2 of 4
 (Pacific version shown on sheets 3 of 4 & 4 of 4)

<small>THIS DRAWING IS A CONTROLLED DOCUMENT FOR TYCO ELECTRONICS CORPORATION. IT IS SUBJECT TO CHANGE AND THE CONTROL AND RESTRICTION DESIGNATION SHOULD BE CONTACTED FOR THE LATEST REVISION.</small>		DWN: L. GROSS CHK: T. ELBIN APVD: M. CLIFFORD PRODUCT SPEC: - APPLICATION SPEC: - WEIGHT: - MATERIAL: -	DATE: 19FEB2014 DATE: 19FEB2014 DATE: 19FEB2014 SCALE: 1:2 SHEET: 2 of 4 REV: C1	NAME: Ocean Side Feed Applicator SIZE: A1 CAGE CODE: 00779 DRAWING NO: 2266225 RESTRICTED TO: -
---	--	---	---	---

PART NUMBER	REVISION	DESCRIPTION	FEED TYPE
2-2266225-1	C	FINE CRIMP HEIGHT ADJUST	MECHANICAL
2-2266225-2	C	FINE CRIMP HEIGHT ADJUST	PNEUMATIC
7-2266225-*	-	SEE CRIMP TOOLING KITS BELOW	-

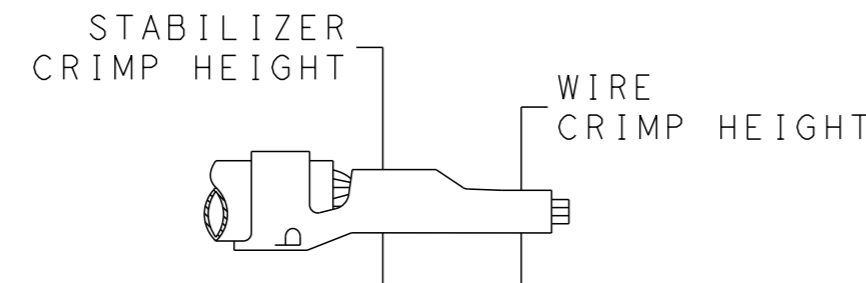
PACIFIC VERSION TERMINATOR
INTERFACE ADAPTER



APPLICATOR DATA		
CRIMP	SIZE	TYPE
WIRE	2.79 mm [.110]	F
STABILIZER	2.79 mm [.110]	O
INSULATION	2.79 mm [.110]	SC
APPLICATOR INSTRUCTIONS 408-35042		

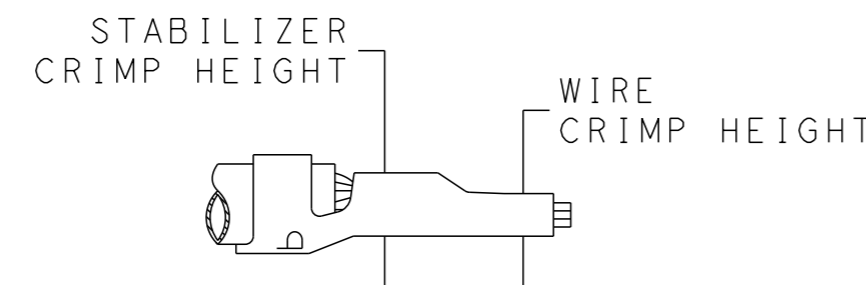
PART NO	REV	WIRE SIZE	WIRE CRIMPER	STABILIZER CRIMPER	INSULATION CRIMPER	ANVIL
7-2266225-7	B	12 AWG	7-456408-6	815664-2	1803146-3	1-1633923-1
7-2266225-8	B	14 AWG	2-456408-5	815664-6	1803146-3	1-1633923-1
7-2266225-9	B	18-16 AWG	2-456408-6	815664-7	1803146-3	1-1633923-1

TERMINAL DATA: TE TERMINAL		TE CRIMP SPECIFICATION	
TERMINAL NAME: AMP-IN			
WIRE STRIP LENGTH		INSULATION DIAMETER RANGE	
4.83-5.59 mm [.190-.220 IN]		Ø2.29-2.54 mm [.090-.100 IN]	5
TERMINAL APPLICATION SPECIFICATION	114-1016		
TERMINALS APPLIED			
TE TERMINAL	TE TERMINAL	TE TERMINAL	TE TERMINAL
3-794013-1			



WIRE SIZE	CRIMP HEIGHT mm [INCH]	WIRE CRIMPER PART NUMBER	STABILIZER CRIMP HEIGHT mm [INCH]	STABILIZER CRIMPER PART NUMBER	CRIMP HEIGHT REFERENCE SETTING
12 AWG	2.16 +/- 0.05 [.085 +/- .002]	7-456408-6	2.79 +/- 0.05 [.110 +/- .002]	815664-2	9.1

TERMINAL DATA: TE TERMINAL		TE CRIMP SPECIFICATION	
TERMINAL NAME: AMP-IN			
WIRE STRIP LENGTH		INSULATION DIAMETER RANGE	
4.83-5.59 mm [.190-.220 IN]		Ø2.29-2.54 mm [.090-.100 IN]	5
TERMINAL APPLICATION SPECIFICATION	114-1016		
TERMINALS APPLIED			
TE TERMINAL	TE TERMINAL	TE TERMINAL	TE TERMINAL
3-770060-1			



WIRE SIZE	CRIMP HEIGHT mm [INCH]	WIRE CRIMPER PART NUMBER	STABILIZER CRIMP HEIGHT mm [INCH]	STABILIZER CRIMPER PART NUMBER	CRIMP HEIGHT REFERENCE SETTING
14 AWG	1.40 +/- 0.05 [.055 +/- .002]	2-456408-5	2.75 +/- 0.10 [.108 +/- .004]	815664-6	7.6
18-16 AWG	1.09 +/- 0.05 [.043 +/- .002]	2-456408-6	2.40 +/- 0.10 [.094 +/- .004]	815664-7	7.8



- 1 RECOMMENDED SPARE PARTS
- 2 REFER TO SUPPLIED INSTRUCTION SHEET FOR CLEANING, LUBRICATION AND STORAGE OF APPLICATOR.
- 3 APPLY PART NUMBER 2-23419-6 LOCTITE TO THREADS OF ITEM 242.
- 4 CRIMP HEIGHT REFERENCE SETTING WAS THE SETTING USED WHEN THE APPLICATOR WAS QUALIFIED AT THE FACTORY. ADJUSTMENT MAY BE NECESSARY WHEN RUNNING APPLICATOR IN THE FIELD.
- 5 THIS APPLICATOR APPLIES SCROLL INSULATION CRIMP DUE TO RESTRICTED INSULATION DIAMETER RANGE.
- 6. UNLESS SPECIFIED OTHERWISE TORQUE VALUES SHALL BE USED PER DOCUMENT, 101-35000.
- 7 ITEMS 1 & 178 TO BE USED WITH 12 AWG ONLY. ITEMS TO BE SHIPPED WITH APPLICATOR.
- 8 ITEMS 253 & 254 TO BE USED WITH 14 AWG ONLY. ITEMS TO BE SHIPPED WITH APPLICATOR.
- 9 ITEMS 255 & 256 TO BE USED WITH 18-16 AWG ONLY. APPLICATOR TO BE SET UP WITH THESE ITEMS.

***WARNING**
ON INSTALLATION, SET WIRE DISC TO CRIMP HEIGHT REFERENCE SETTING FOR LARGEST WIRE SIZE. CRIMP HEIGHT REFERENCE SETTINGS GREATER THAN THE VALUE SHOWN MAY CAUSE DAMAGE TO THE CRIMP TOOLING. REFER TO THE INSTRUCTION SHEET FOR PROPER SETUP AND ADJUSTMENTS.

PACIFIC VERSION
Shown on sheets 3 of 4 & 4 of 4
(Atlantic version shown on sheets 1 of 4 & 2 of 4)

LOC	DIST	REVISIONS			
		REV	DATE	BY	APPV
A	66	-	SEE SHEET 1	-	-

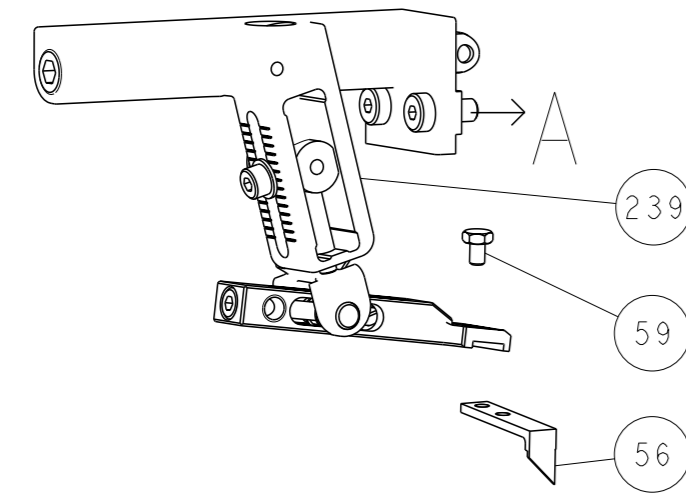
9	1	-	-	1	1	2-456408-6	CRIMPER, WIRE PREMIUM	256
9	1	-	-	1	1	815664-7	CRIMPER, WIRE-O	255
8	1	-	1	1	1	2-456408-5	CRIMPER, WIRE PREMIUM	254
8	1	-	1	1	1	815664-6	CRIMPER, WIRE-O	253
-	-	-	1	-	-	2119640-1	PUSH ROD, AIR FEED	250
-	-	-	1	-	-	1803259-1	BUSHING, FLANGED	249
-	-	-	1	1	1	2119082-6	CAM, SNAIL, INSULATION ADJUSTMENT	244
-	-	-	1	1	1	2079764-1	WASHER, WAVE SPRING, CREST-TO-CREST	243
3	-	-	1	1	1	2119083-1	RETAINER, INSULATION DIAL	242
-	-	-	1	1	1	7-18023-7	SCR, SKT HD CAP M3 X 4.0	241
-	-	-	-	1	-	2119580-1	MECHANICAL FEED ASSEMBLY	239
-	-	-	1	-	-	2063440-1	AIR FEED MODULE	238
7	1	-	1	1	1	7-456408-6	CRIMPER, WIRE PREMIUM	178
-	-	-	2	-	-	21045-3	RING, RETAIN, EXTERN, 3/16 CRESCENT	172
-	-	-	REF	REF	-	994970-2	COUNTER, MAGNETIC	164
-	-	-	1	-	-	240638-1	SPRING, FEED FINGER	163
-	-	-	1	-	-	2119641-2	FEED CAM, AIR FEED	151
-	-	-	1	1	1	2168083-8	SCR, SKT HD CAP, RoHS, M4 X 16	144
-	-	-	4	4	4	2168083-9	SCR, SKT HD CAP, RoHS, M4 X 20	143
-	-	-	-	1	-	2119653-2	FEED CAM, POST FEED	142
-	-	-	1	1	1	1-1803583-0	APPLICATOR BASIC ASSEMBLY, SF	141
-	-	-	1	1	1	1803516-1	RAM ASSEMBLY, SF PACIFIC	140
-	-	-	1	-	-	3-23627-7	PIN, RETAIN, GRVD, 3/16 X .854	137
-	-	-	1	-	-	2119799-1	HOLDER, FEED FINGER, AF	136
-	-	-	1	1	1	2844908-1	SCREW, LOCKING	99
-	-	-	1	1	1	2844907-1	POST, LOCKING	98
-	-	-	1	1	1	455888-5	SPACER, CRIMPER	82
-	-	-	1	1	1	1803607-1	DOCUMENTATION PACKAGE	71
-	-	-	1	1	1	2119791-9	DEPRESSOR, WIRE	70
-	-	-	1	1	1	2119740-1	TAG, IDENTIFICATION	67
-	-	-	2	2	2	2168078-1	SCREW, DRIVE, RH, RoHS, 2 x .188	66
-	-	-	1	1	1	5-18022-5	SCR, HEX HD CAP, M4 X 6.0	59
-	-	-	1	1	1	1338685-1	PAWL, FEED	56
-	-	-	1	2	2	18023-9	SCR, SKT HD CAP M4 X 6.0	49
-	-	-	-	1	-	2119652-1	FEED CAM, PRE FEED	48
-	-	-	1	1	1	1803602-1	SCR, BHSC, RoHS (M8 X 25)	41
-	-	-	1	1	1	469465-4	STOP, WIRE	34
-	-	-	2	2	2	2079383-5	SCR, BHSC, RoHS (M4 X 20)	33
-	-	-	2	2	2	2-2844962-8	SPACER, CYLINDRICAL, STRIP GUIDE	30
-	-	-	1	1	1	2844992-1	ASSEMBLY, STRIP GUIDE	29
-	-	-	1	1	1	455888-3	SPACER, CRIMPER	28
-	-	-	1	1	1	1320928-2	STRIP GUIDE	24
-	-	-	1	1	1	2168083-2	SCR, SKT HD CAP, RoHS, M4 X 8.0	21
-	-	-	2	2	2	1-18028-2	WASHER, FLAT, REG M4	20
-	-	-	1	1	1	2119533-3	STRIPPER, SIDE FEED	19
1	-	-	1	1	1	2119806-1	INSERT, SHEAR	13
-	-	-	1	1	1	3-22280-3	SPRING, COMPRESSION	12
-	-	-	1	1	1	1-356885-4	STOP, SHEAR	11
1	-	-	1	1	1	2119805-1	SHEAR HOLDER, FRONT	10
1	-	-	1	1	1	1803095-6	FLOATING SHEAR, FRONT	9
1	1	1	1	1	1	1-1633923-1	ANVIL, COMBINATION	8
-	-	-	-	-	-	-	-	7
-	-	-	-	-	-	-	-	6
-	-	-	1	1	1	1-2119757-0	DEPRESSOR, SHEAR	5
-	-	-	1	1	1	238011-8	BLOCK, CRIMPER SPACER	4
1	1	1	1	1	1	1803146-3	- CRIMPER, INSULATION, SCROLL	3
-	-	-	1	1	1	455888-3	SPACER, CRIMPER	2
8	1	-	1	1	1	815664-2	CRIMPER, WIRE-O	1

DIMENSIONS:		TOLERANCES UNLESS OTHERWISE SPECIFIED:		APPLICATOR DATA	
mm	0 PLC ±	1 PLC ±	2 PLC ±	3 PLC ±	4 PLC ±
	ANGLES FINISH	-		-	
MATERIAL		FINISH		WEIGHT	
-		-		-	

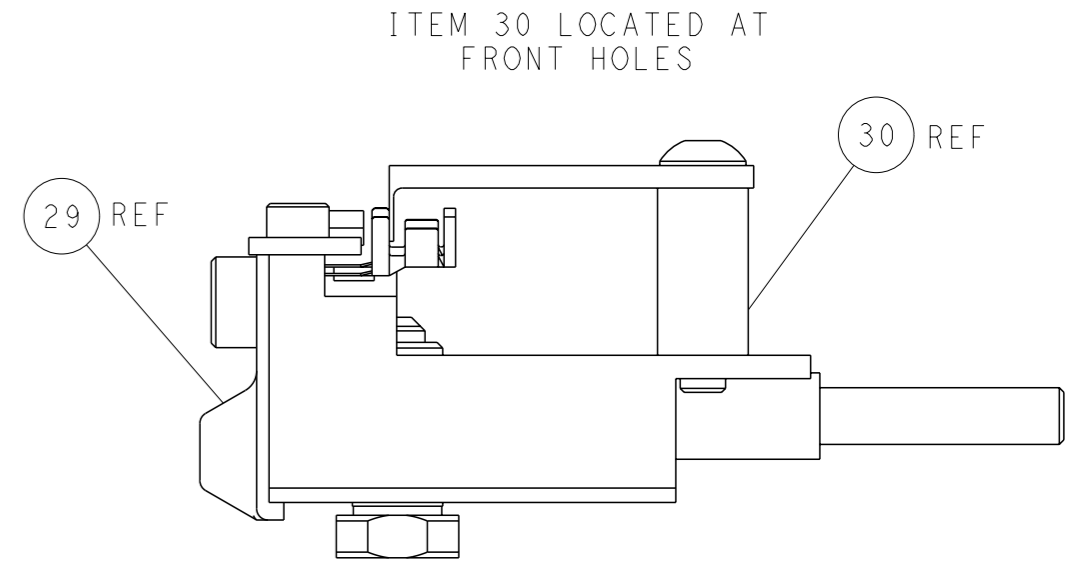
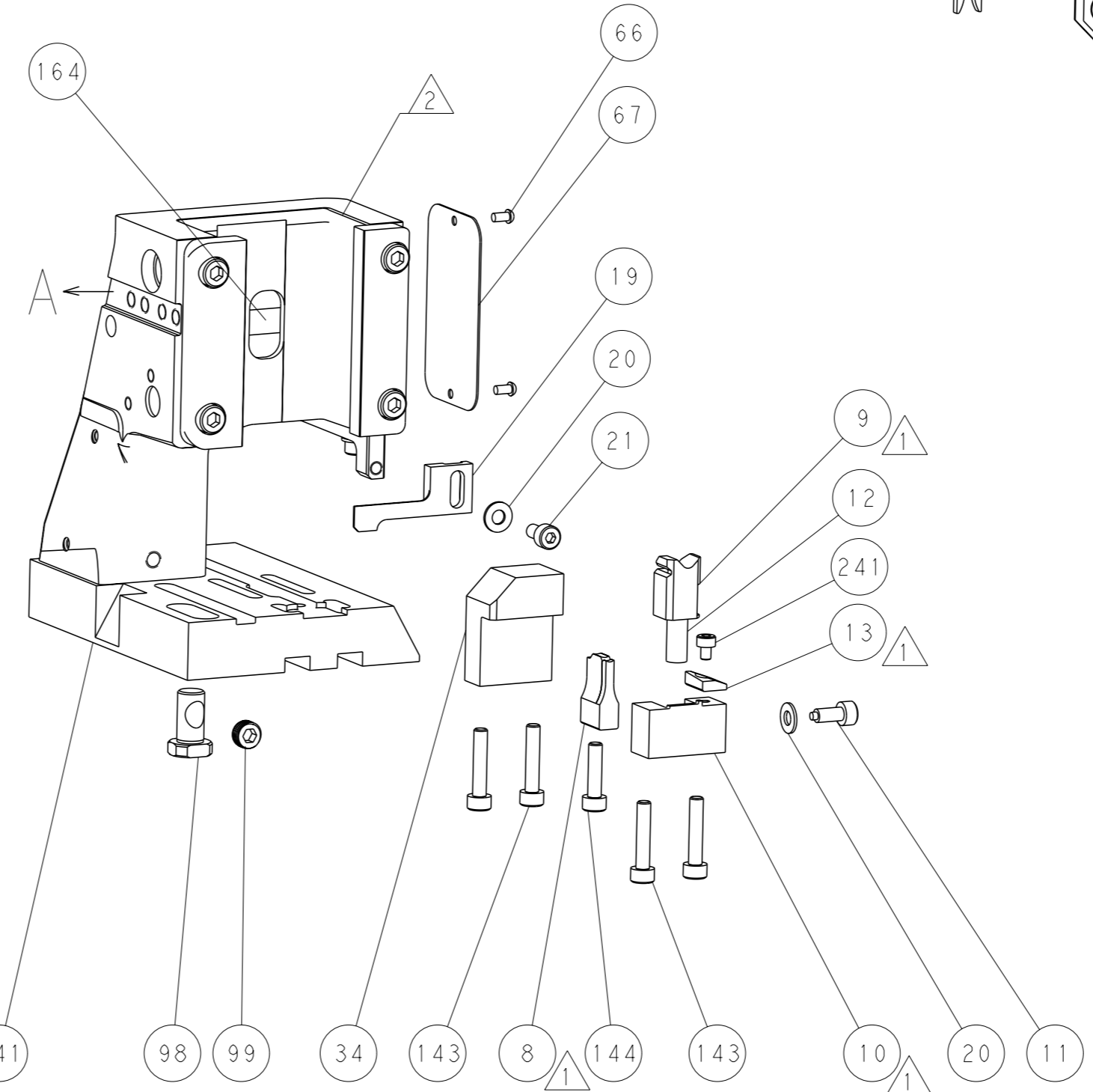
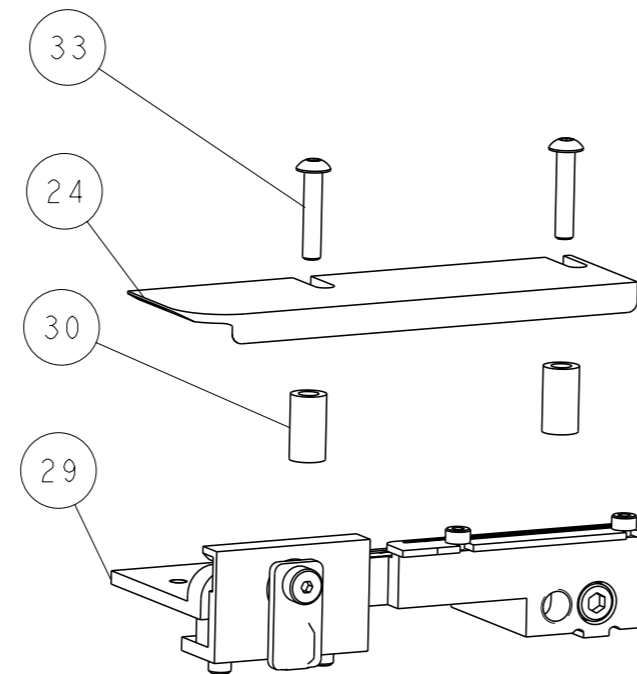
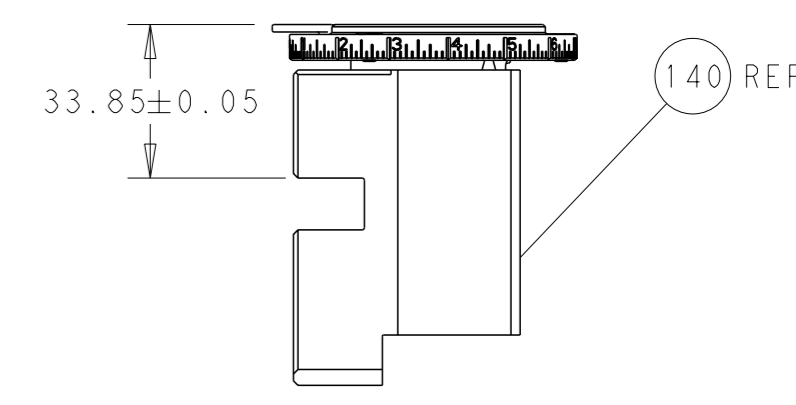
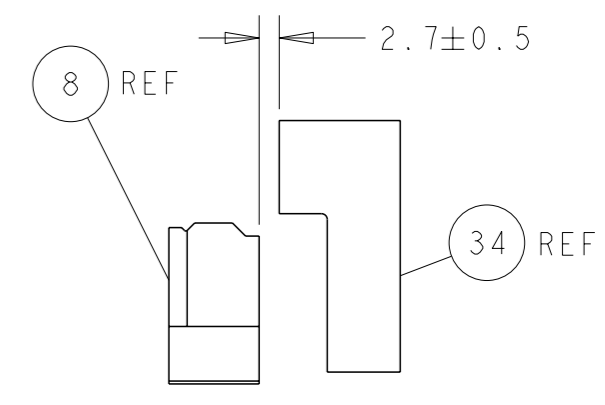
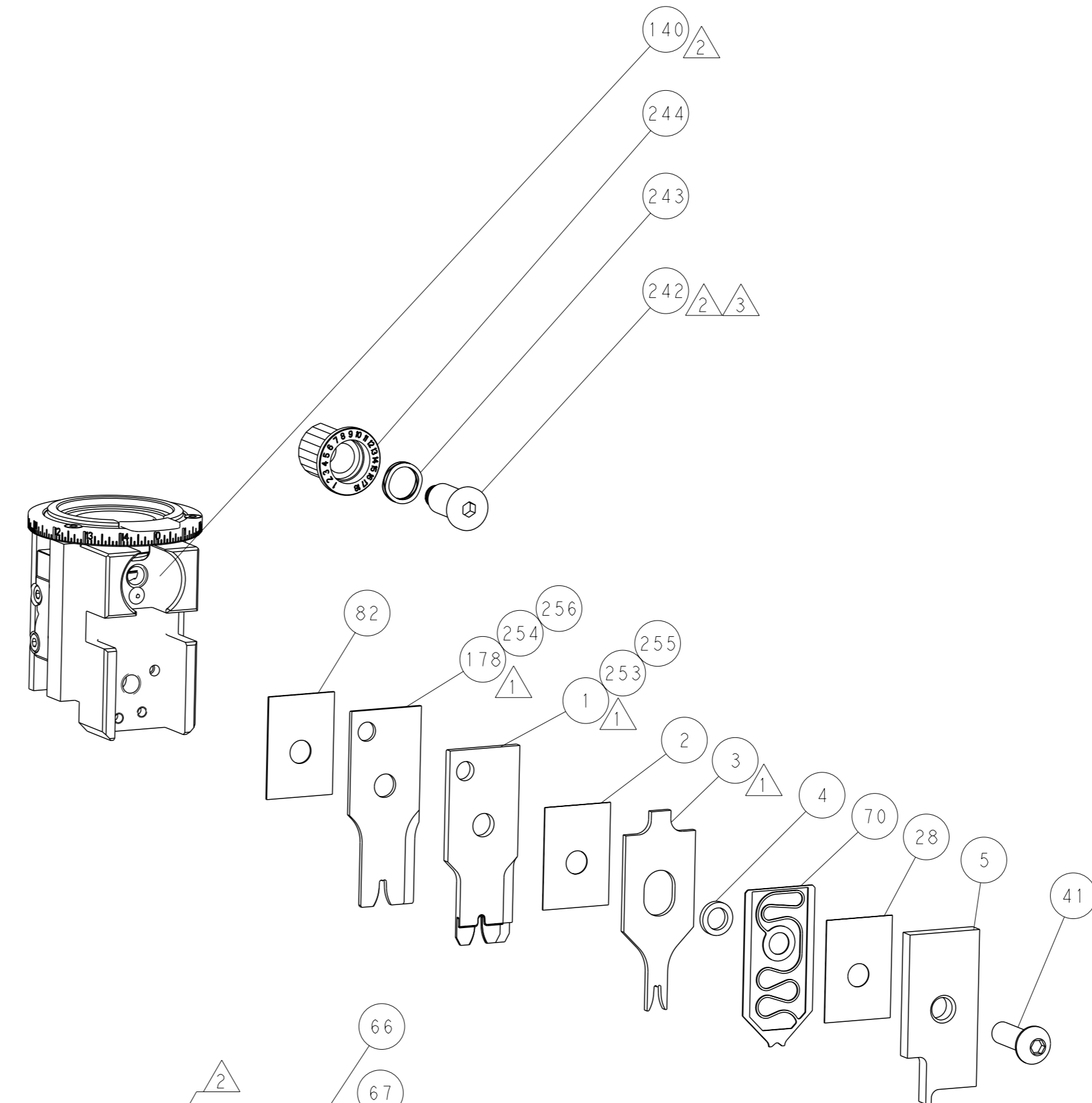
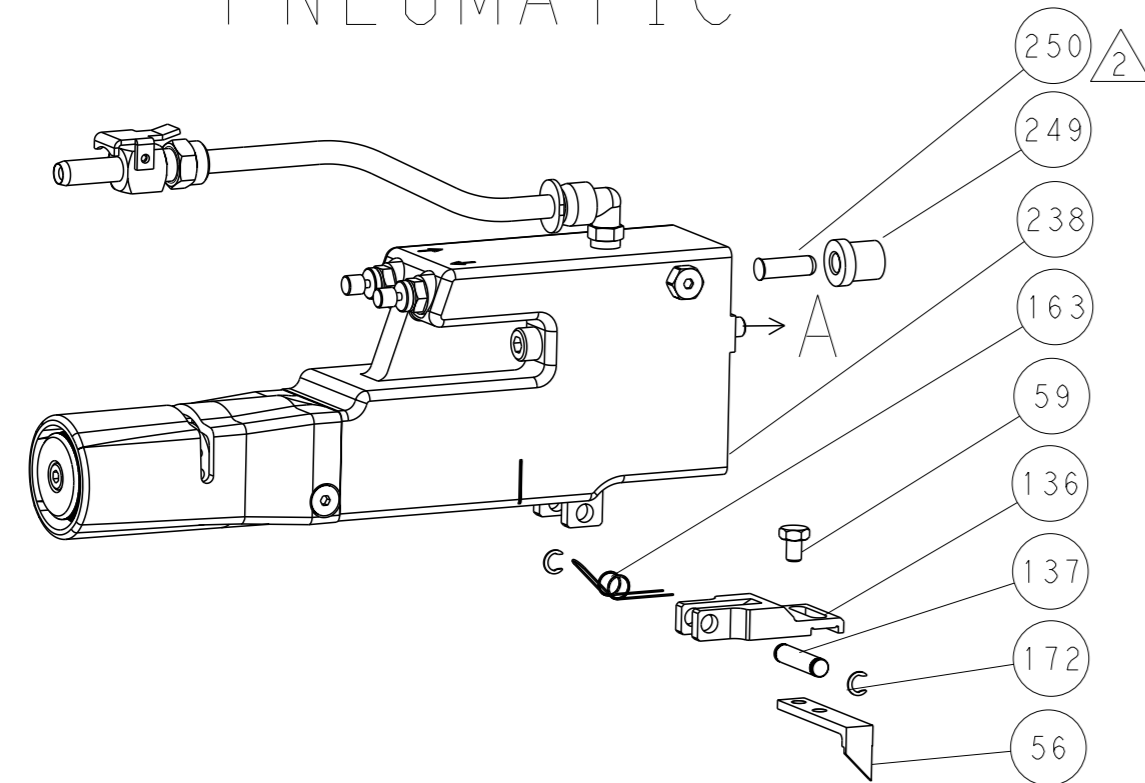
OWN	19FEB2014	TE Connectivity
CHK	19FEB2014	Harrisburg, PA 17105-3608
APPV	19FEB2014	
NAME	Ocean Side Feed Applicator	
SIZE	CAGE CODE	DRAWING NO
A1	00779	2266225
Customer Accessible Production Drawing		
SCALE	1:2	SHEET 3 of 4
REV	C1	

LOC		DIST		REVISIONS			
A	66	P	LYR	DESCRIPTION	DATE	OWN	APVD
		-		SEE SHEET 1	-	-	-

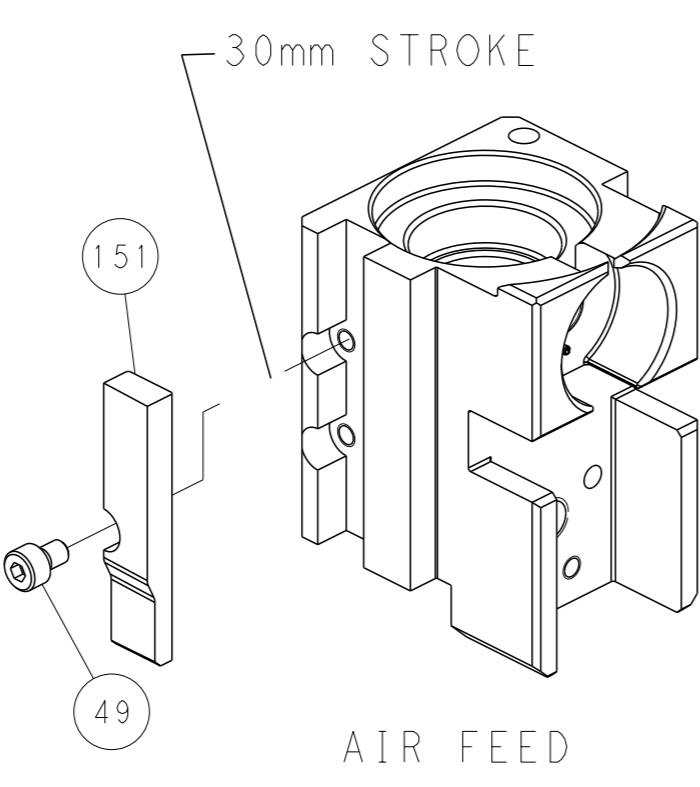
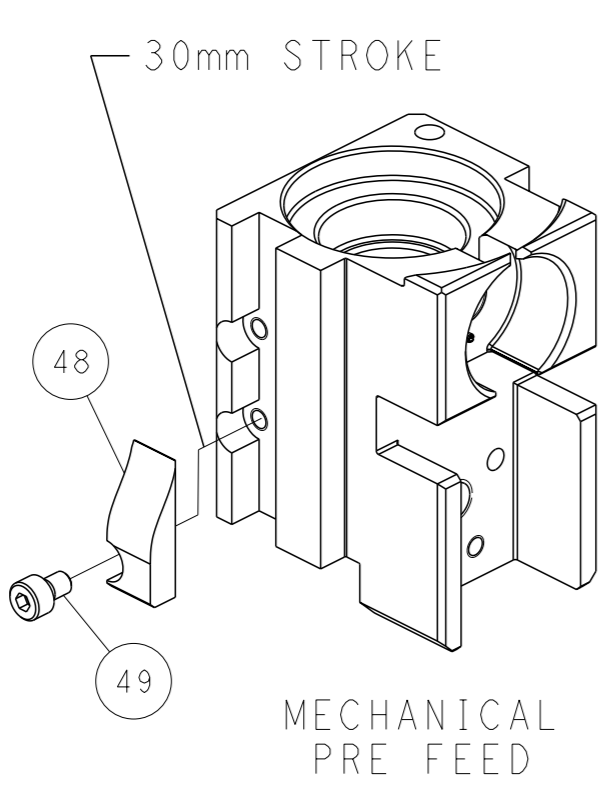
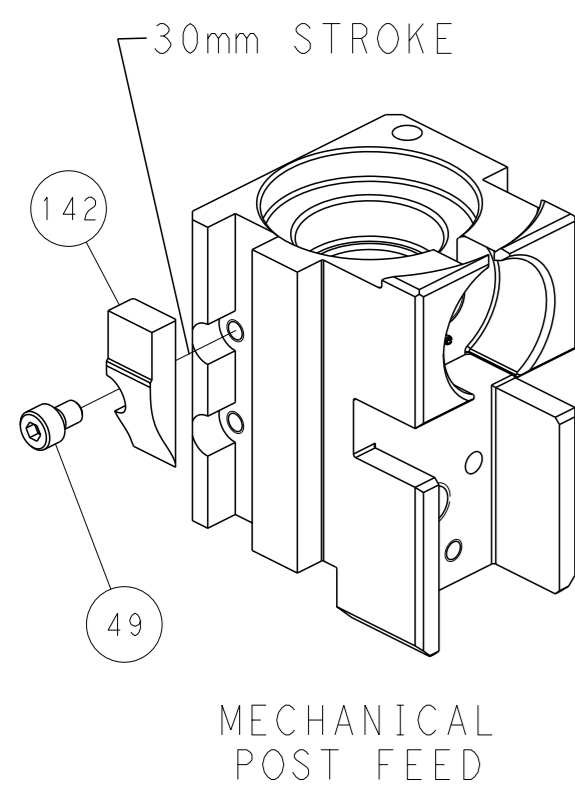
FEED TYPE MECHANICAL



PNEUMATIC



CAM POSITIONS



PACIFIC VERSION
 Shown on sheets 3 of 4 & 4 of 4
 (Atlantic version shown on sheets 1 of 4 & 2 of 4)

<small>THIS DRAWING IS A CONTROLLED DOCUMENT FOR TYCO ELECTRONICS CORPORATION. IT IS SUBJECT TO CHANGE AND THE CONTROLLING ENGINEERING ORGANIZATION SHOULD BE CONTACTED FOR THE LATEST REVISION.</small>		DWN: L.GROSS 19FEB2014 CHK: T.ELBIN 19FEB2014 APVD: M.CLEFFORD 19FEB2014 PRODUCT SPEC: APPLICATION SPEC: WEIGHT: - MATERIAL: -	NAME: Ocean Side Feed Applicator SIZE: A1 CAGE CODE: 00779 DRAWING NO: C=2266225 SCALE: 1:2 SHEET: 4 of 4 REV: C1	TE Connectivity Harrisburg, PA 17105-3608
DIMENSIONS: mm TOLERANCES UNLESS OTHERWISE SPECIFIED: 0 PLC ± 1 PLC ± 2 PLC ± 3 PLC ± 4 PLC ± ANGLES FINISH ±		RESTRICTED TO: - Customer Accessible Production Drawing	SHEETS 1 & 2 ARE NOT REQUIRED FOR PACIFIC VERSION	