

Type CNR-01-I PC Board Type Fuse Clip Standard Auto Blade Fuses



www.optifuse.com (619) 593-5050

Specifications:

Voltage Rating: 500V AC / 250V DC

Amperage Rating: See Chart

Body Material: See Chart

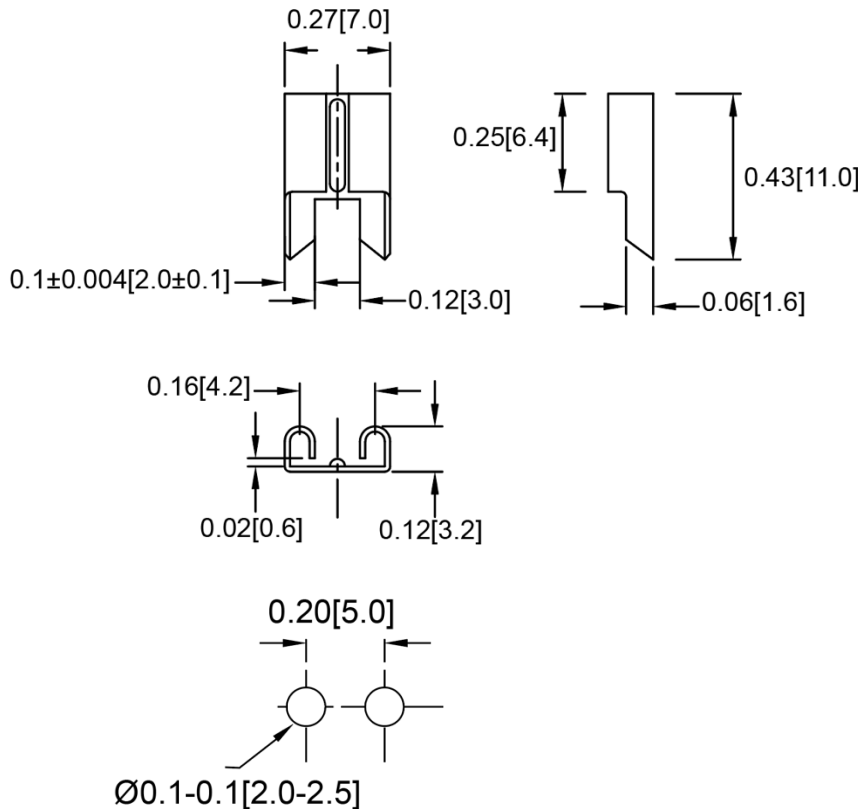
Finish: Bright Tin-plated

(For Matte Tin-plated add -CE at end of part number ...ie. CNR-01-I-PCU-CE)

For use with Type **APR**, **ANR** Fuses (Standard-Auto Blade Type)

Part number:	Material	Amperage Rating
CNR-01-I	Spring Bronze	15A Max.
CNR-01-I-PCU	Phosphor Bronze	20A Max.
CNR-01-I-BECU	Beryllium Bronze	40A Max.

Mechanical Dimensions: Inches [mm]



Warning:



-Operation beyond the specified maximum ratings or improper use may result in damage and possible electrical arcing and/or flame.

-Avoid contact of device with chemical solvent. Prolonged contact will damage the device performance.