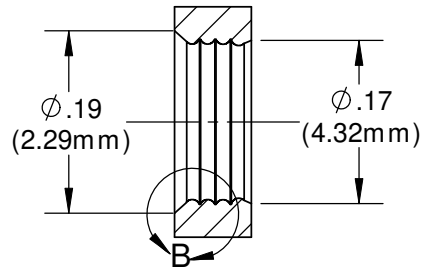
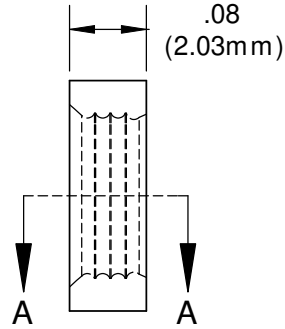


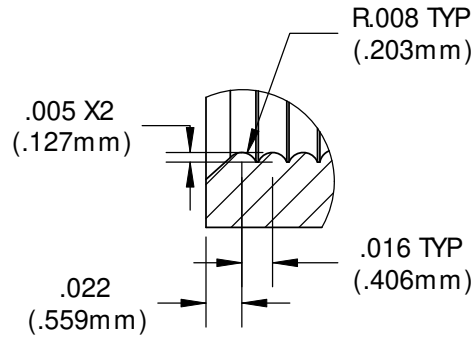
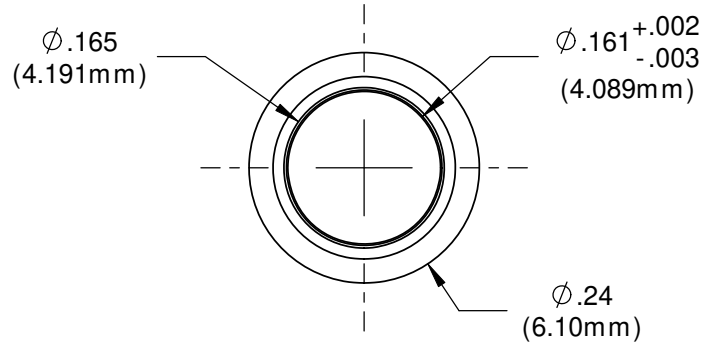
NOTES:

1. FINISH: Parts shall have a smooth appearance, min. 600 surface finish, with no gates and all flash removed
2. U.S. & Foreign Pat. Issued & Pend.

REVISIONS				
ECN #	REV	DESCRIPTION	DATE	INITIALS
	N/A	INITIAL RELEASE	10/25/85	JS
	001	REVISED PER ECR1110AZ01	2/8/10	KH
145	002	CHANGE IN MATERIAL	7/12/10	KH



SECTION A-A



DETAIL B  
SCALE 10 : 1



ISOMETRIC VIEW

UNLESS OTHERWISE SPECIFIED DIMENSIONS ARE IN INCHES: ANGLES    DECIMALS ± 1"        .X    ±.020 .XX   ±.010 FINISH    .XXX ±.005		MATERIAL 50% PRO-FAX SG702 (BLACK) 50% ELASTOCON 8068		VISUAL COMMUNICATIONS COMPANY 190 Bosstick Boulevard, Suite 101 San Marcos, CA 92069 USA Phone (760) 560-1300 Fax (760) 560-1301 email vccsales@vcclite.com	
BREAK ALL CORNERS AND SHARP EDGES .050 MAX		FINISH SEE NOTES		TITLE: CLIPLITE RNG 132	
THIRD ANGLE PROJECTION		APPROVALS		SIZE	DWG. NO.
PROPRIETARY AND CONFIDENTIAL THE INFORMATION CONTAINED IN THIS DRAWING IS THE SOLE PROPERTY OF VISUAL COMMUNICATIONS COMPANY, INC. ANY REPRODUCTION IN PART OR AS A WHOLE WITHOUT THE WRITTEN PERMISSION OF VISUAL COMMUNICATIONS COMPANY, INC IS PROHIBITED.		DATE		A	RNG 132_E
		DRAWN    K.HOWARD    2/8/10		REV 002	
		CHECKED    DPZ    2/22/10		SCALE: 5:1	
		DO NOT SCALE DRAWING		SHEET 1 OF 1	