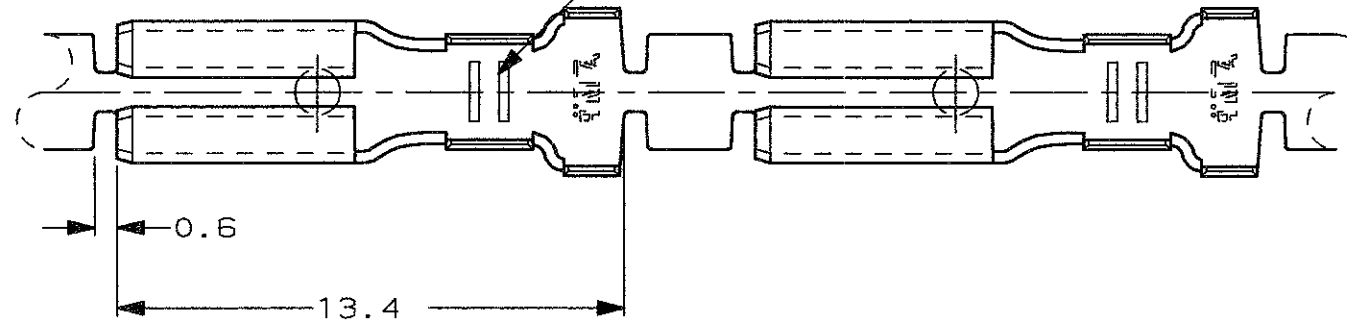


SCALA NON IMPEGNATIVA  
(DO NOT SCALE)  
DIMENSIONI IN mm  
(DIMENSIONS IN mm)

**METRIC**

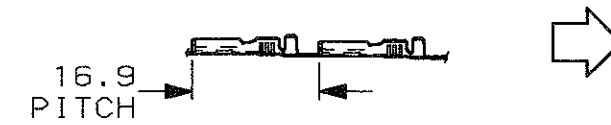


115-11-6, 2 SERRATIONS  
TOOLMARKS BESIDES SERRATIONS PERMISSIBLE.



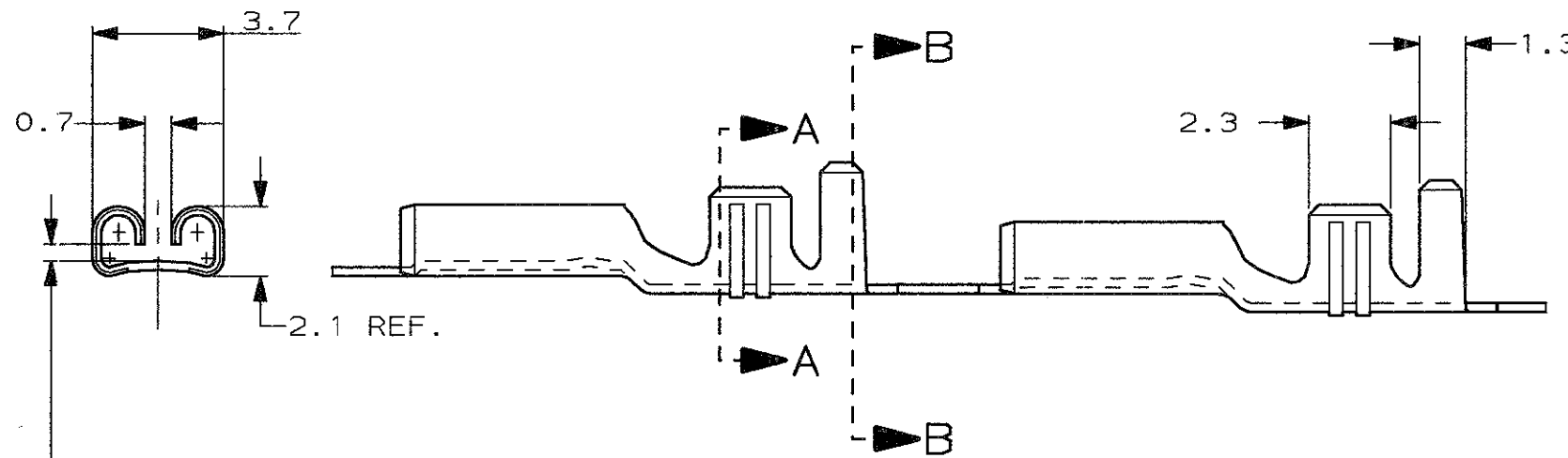
1) STATO DI FORNITURA - SCALA 1:1  
(SUPPLY CONDITION - SCALE 1:1)

SENSO DI USCITA  
DEL TERMINALE  
DALLA BOBINA  
(DIRECTION OFF  
TOP OF REEL)



2) SPECIFICA DI PRODOTTO 108-20019  
(PRODUCT SPEC. 108-20019)

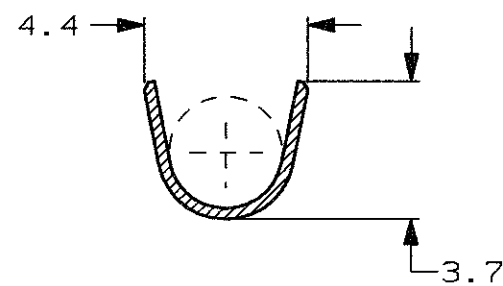
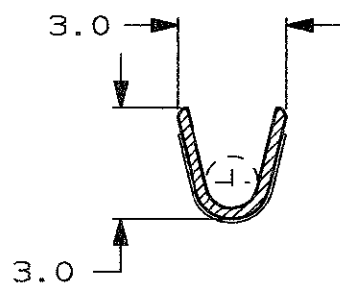
3) PER LE VERSIONI IN PEZZI SCIOLTI  
VEDERE DISEGNO 180441  
(FOR LOOSE PIECE VERSION SEE DRAWING 180441).



ADATTO PER LINGUETTA  
DI 0.5 mm.  
(TO FIT TAB 0.5 mm.)

SEZIONE A-A  
(SECTION A-A)

SEZIONE B-B  
(SECTION B-B)



	PRE-STAGNATO (PRE-TIN PLATED)	OTTONE (BRASS)	180437-2	AG
	NUDO (UNPLATED)	OTTONE (BRASS)	180437-1	AE
NOTE	FINITURA / COLORE (FINISH / COLOUR)	MATERIALE (MATERIAL)	NUMERO (CAMP P/N)	REV.

CUSTOMER DWG.  
FOR REFERENCE ONLY

DISEGNO PER CLIENTE  
SOLO PER RIFERIMENTO

THIS DRAWING IS UNPUBLISHED RELEASE FOR PUBLICATION 19  
© COPYRIGHT 19 BY AMP INCORPORATED, HARRISBURG, PA. ALL INTERNATIONAL RIGHT  
RESERVED. AMP PRODUCTS MAY BE COVERED BY U.S. AND FOREIGN PATENT AND/OR PATENT PENDING

TOLLERANZE, SE NON DIVERSAMENTE SPECIFICATO (TOLERANCES, UNLESS OTHERWISE SPECIFIED)	DIAM. ISOLANTE (INS. DIA. RANGE)	RANGO FILO (WIRE RANGE) mm <sup>2</sup>	SCALA (SCALE)
± 0.4	1.5-2.8	0.5-1.5	5:1

ANGOLI  
(ANGLES) ± 2°

**AMP** AMP ITALIA S.p.A.  
Corso F.lli Cervi, 15  
COLLEGNO (TORINO)

DIS. H. YAALI  
(DR.) 18 DEC 2000

DESCRIZIONE  
(DESCRIPTION) FASTON® Connector  
.110" sr. REC. CONTACT

AG	REVISED ECR05-8370	AV	22 MAY 2006	CONT. C. TARTARI (CHKD)
AE	REVISED & REDRAWN ET00-0004-01	H. Y.	08 JAN 01	APP. -
REV. (REV. LTR.)	REVISIONI (REVISION RECORD)	DIS. (DR)	DATA (DATE)	APP. (APP.)
		LOC.	SIZE	NUMERO (DWG NO)
				REV.
				F
				1
				DI
				(OF) 1

DISTRIBUZIONE  
(PRINT DIST.)