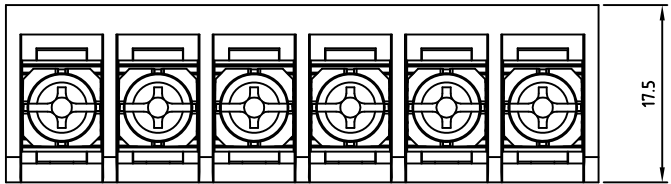
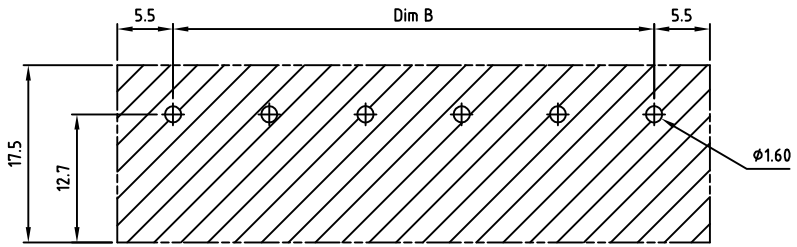
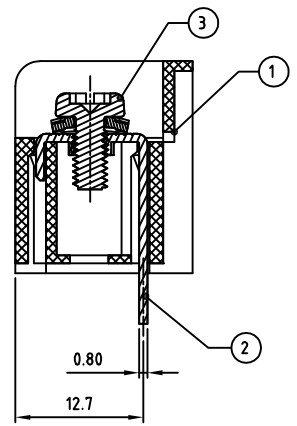
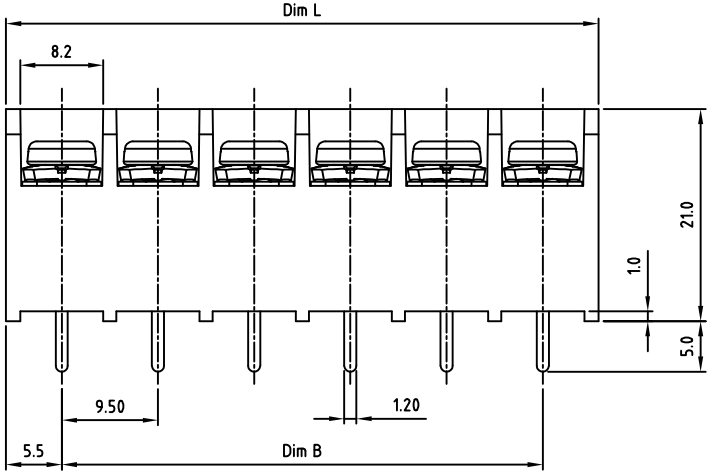
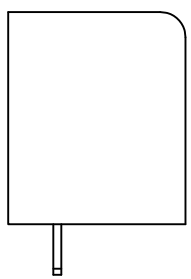


Transfer or duplication of this document as well as the utilisation or communication of its content are not permitted unless express consent is granted. Violations give rise to claims for damages. All rights reserved in case of patent, utility model or design patent registrations.



- Technical data**
- Nominal voltage: 300V/25A  
PITCH: 9.5mm
  - Connection capacity:  
AWG 22-12
  - Insulation Withstanding Voltage:  
AC 2500V/MIN
  - Insulation Resistance:  
1000MΩ or more at DC500V
  - Tightening torque:  
12.2kgf.cm (1.2N.m)
  - Screw thread: M3.5
  - Operating temperature range:-40°C ~ 115°C  
Soldering temperature:250°C±10°C /5s
  - Undimensioned Tolerances:
- |  |       |       |
|--|-------|-------|
| Dim.L=P×9.5+1.5<br>Dim.B=(P-1)×9.5<br>P= number of poles |       |       |
| 0-30mm   | Dim B | Dim L |
| over 30mm-60mm   | ±0.15 | ±0.20 |
| over 60mm-90mm   | ±0.20 | ±0.30 |
| over 90mm  | ±0.25 | ±0.40 |
|  | ±0.30 | ±0.50 |
- Safety approval:
  - RoHS Compliance



PCB LAYOUT

Part No.: **OSTYK44AXX030**

No. of Poles  
 02 2 Poles  
 03 3 Poles  
 ... ..  
 24 24 Poles

3	SCREW+WASHER	STEEL	M3.5×0.6, Ni Plated	P
2	CONTACT	BRASS	M3.5×0.6, Tin PLATED	P
1	BODY	PA66 UL94V-0	Black	1
ITEM	NAME OF PART	MATERIAL	NOTES	Q'TY
DWG.	WF. Zhang	DATE	2016.04.04	UNITS: MM SHEET: 1 OF 1 Tolerance
CHK.	WF. Zhang	DATE	2016.08.03	SCALE: NONE 2:1 ( : ) REV.: A
APP.		DATE		X. ±0.50 X.X ±0.30 X.XX ±0.10 X* ±1*
		TITLE:	OSTYK44A 9.50 Series	
		PART NO.	OSTYK44AXX030	
		DWG NO.	OSTYK44AXX030.dwg	

	SIGN	DESCRIPTION	CHK.	DATE
--	------	-------------	------	------

ON-SHORE TECHNOLOGY, INC.