

4

3

2

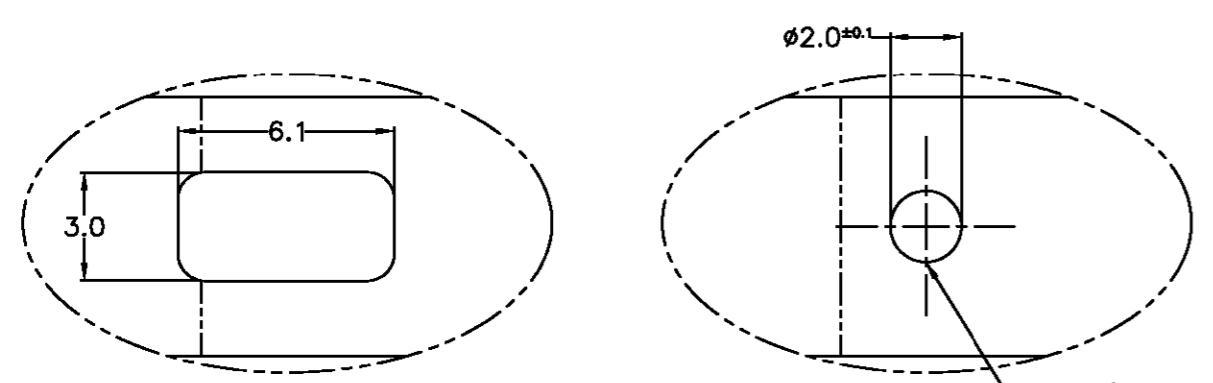
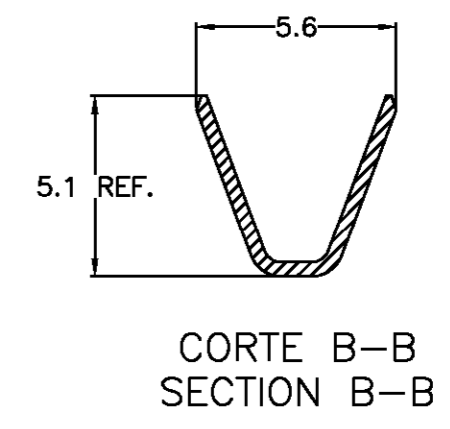
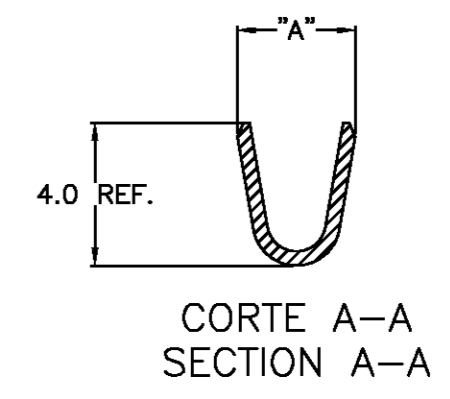
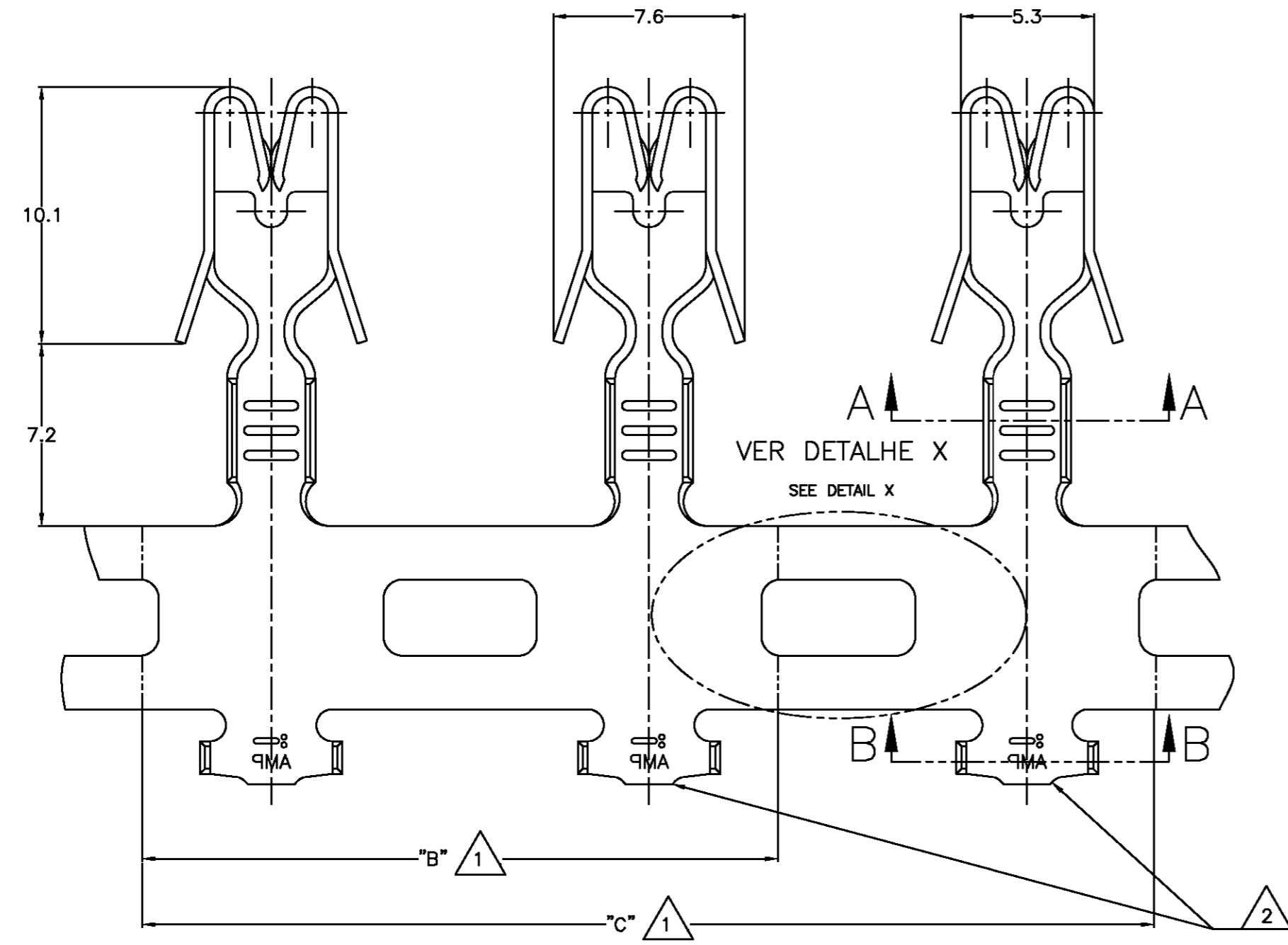
1

THIS DRAWING IS UNPUBLISHED. RELEASED FOR PUBLICATION .19
 © COPYRIGHT 19 BY AMP INCORPORATED. ALL RIGHTS RESERVED. DO NOT SCALE

CAD
 DO NOT REVERSE EXCEPT BY CAD

LOC AP DIST

REVISIONS			DATE	DWN	APVD
P	LTR	DESCRIPTION			
G		REDRAWN BY CAD ECLB0108/99	28APR99	HL	PLF
H		REVISED BY ECLB0067/00	11DEC00	AP	PLF
H1		REVISED PER ECO-09-026444	27NOV09	KK	AEG



DETALHE X
 DETAIL X

OBSOLETE →	40,2	-/-	3,9	3	ESTANHADO/TIN PLATTED	LATÃO/BRASS	H	1-626499-4	3
OBSOLETE →	40,2	-/-	3,9	3	-----/-----	LATÃO/BRASS	H	1-626499-3	3
OBSOLETE →	40,2	-/-	3,6	3	ESTANHADO/TIN PLATTED	LATÃO/BRASS	H	1-626499-2	2
OBSOLETE →	40,2	-/-	3,6	3	-----/-----	LATÃO/BRASS	H	1-626499-1	1
OBSOLETE →	-/-	25,2	3,9	2	ESTANHADO/TIN PLATTED	LATÃO/BRASS	H	626499-4	3
	-/-	25,2	3,9	2	-----/-----	LATÃO/BRASS	H	626499-3	3
	-/-	25,2	3,6	2	ESTANHADO/TIN PLATTED	LATÃO/BRASS	H	626499-2	2
	-/-	25,2	3,6	2	-----/-----	LATÃO/BRASS	H	626499-1	1
	"C"	"B"	"A"	NÚMERO DE CONTATOS NUMBER OF CONTACTS	ACABAMENTO FINISH	MATERIAL	PART REV.	PART NUMBER	
	DIMENSÃO/DIMENSION								

- 1 - DIMENSÃO DE CORTE PARA APLICADOR
APPLICATOR CUT DIMENSION
- 2 - USO OPCIONAL, DE ACORDO COM A NECESSIDADE DO CLIENTE
OPTIONAL USE, ACCORDING TO THE CUSTOMER'S NEED
- 3 - PARA AMP ITÁLIA SOMENTE
FOR AMP ITALY ONLY
- 4 - OBSOLETE PARTS: OBSOLETE CIS STREAMLINING PER D.RENAUD/D.SINISI

THIS DRAWING IS A CONTROLLED DOCUMENT.

INSUL RANGE # 3,0 - 4,3mm	WIRE RANGE 1,0 - 2,5 mm²	MATERIAL SEE TABLE	FINISH SEE TABLE	DIMENSIONS: MM 	TOLERANCES UNLESS OTHERWISE SPECIFIED: 0 PLC ± - 1 PLC ± 0,25 2 PLC ± - 3 PLC ± - 4 PLC ± - ANGLES ± -	DWN H.LIVERARO 22APR99 CHK P.L.FARIA 28APR99 APVD F.ALEXANDRONI 28APR99 PRODUCT SPEC - APPLICATION SPEC - WEIGHT -	AMP AMP do BRASIL Ltda. São Paulo - Brasil FUSE CONTACT SIZE A2 CAGE CODE 00779 DRAWING NO C-626499 RESTRICTED TO - CUSTOMER DRAWING SCALE 5:1 SHEET 1 OF 1 REV H1
------------------------------	-----------------------------	-----------------------	---------------------	-----------------------	--	---	--