

## CAR1212FP series rectifier

Input: 85Vac to 264Vac; Output: 12Vdc @ 1250W; 5 Vdc @ 0.5A



### Applications

- 12Vdc distributed power architectures
- Datacom and Telecom applications
- Mid to high-end Servers
- Enterprise Networking
- Network Attached Storage
- Telecom Access Nodes
- Routers/Switches
- Broadband Switches
- ATE Equipment

### Description

The CAR1212FP series of rectifiers provide highly efficient isolated power from world-wide commercial AC mains. Offered in the industry standard compact 1U form factor, these rectifiers complement the CAR1212DC converter line, providing comprehensive solutions for systems connected either to commercial ac mains or 48/60Vdc power plants. This plug and play approach, between AC and DC input units, has significant advantages since systems can be readily reconfigured by simply replacing the power supply.

The high-density, front-to-back airflow is designed for minimal space utilization and is highly expandable for future growth.

### Features

- Universal input with PFC
- Constant power characteristic
- 3 front panel LEDs:
- Remote ON/OFF control of the 12Vdc output
- Remote sense on the 12Vdc output
- No minimum load requirements
- Active load sharing (single wire)
- Hot Plug-ability
- Efficiency: typically 89% at high line  
85% at low line
- Standby : 5Vdc
- Auto recoverable OC & OT protection
- Operating temperature: -10 - 70°C (de-rated above 50°C)
- Digital status & control: I<sup>2</sup>C serial bus
- UL and cUL approved to UL/CSA+62368-1, TUV (EN62368-1), CE<sup>S</sup> Mark
- EMI: class A FCC docket 20780 part 15, EN55032
- Meets EN6100 immunity and transient standards
- Shock & vibration: NEBS GR-63-CORE, level 3
- Compliant to RoHS Directive 2011/65/EU and amended Directive (EU) 2015/863
- Compliant to REACH Directive (EC) No 1907/2006



## CAR1212FP series rectifier

Input: 85Vac to 264Vac; Output: 12 Vdc @ 1250W; 5 Vdc @ 0.5A

### Absolute Maximum Ratings

Stresses in excess of the absolute maximum ratings can cause permanent damage to the device. These are absolute stress ratings only, functional operation of the device is not implied at these or any other conditions in excess of those given in the operations sections of the data sheet. Exposure to absolute maximum ratings for extended periods can adversely affect the device reliability.

| Parameter   | Device | Symbol          | Min | Max             | Unit            |
|---|--------|-----------------|-----|-----------------|-----------------|
| Input Voltage: Continuous                                   | All    | V <sub>IN</sub> | 0   | 264             | V <sub>ac</sub> |
| Operating Ambient Temperature                               |        | TA              | -10 | 70 <sup>1</sup> | °C              |
| Storage Temperature   |        | Tstg            | -40 | 85              | °C              |
| I/O Isolation voltage to Frame (100% factory Hi-Pot tested) |        |                 |     | 1500            | V <sub>ac</sub> |

### Electrical Specifications

Unless otherwise indicated, specifications apply over all operating input voltage, load, and temperature conditions.

| INPUT   |        |                 |     |         |            |                 |                   |
|---|--------|-----------------|-----|---------|------------|-----------------|-------------------|
| Parameter   | Device | Symbol          | Min | Typ     | Max        | Unit            |                   |
| Operational Range   | All    | V <sub>IN</sub> | 85  | 110/230 | 264        | V <sub>ac</sub> |                   |
| Frequency Range (ETSI 300-132-1 recommendation)   |        | F <sub>IN</sub> | 47  | 50/60   | 63         | Hz              |                   |
| Main Output Turn_OFF  |        | V <sub>IN</sub> |     |         |            | 80              | V <sub>ac</sub>   |
| Maximum Input Current<br>(V <sub>O</sub> = V <sub>O,set</sub> , I <sub>O</sub> =I <sub>O,max</sub> )        |        | I <sub>IN</sub> |     |         |            | 12<br>8.1       | A <sub>ac</sub>   |
| Cold Start Inrush Current<br>(Excluding x-caps, 25°C, <10ms, per ETSI 300-132)                              |        | I <sub>IN</sub> |     |         |            | 35              | A <sub>peak</sub> |
| Efficiency<br>(T <sub>amb</sub> =25°C, V <sub>in</sub> = 230V, V <sub>out</sub> = 12V, I <sub>O,max</sub> ) |        | η               |     |         | 89<br>85   |                 | %                 |
| Power Factor<br>(V <sub>in</sub> =230Vac, I <sub>O</sub> =I <sub>O,max</sub> )                              |        | PF              |     |         | 0.99       |                 |                   |
| Holdup time <sup>2</sup><br>(V <sub>out</sub> = 12V <sub>dc</sub> , T <sub>amb</sub> 25°C)                  |        | T               |     |         | 16.7<br>20 |                 | ms                |
| Ride through  |        | T               |     |         | 10         |                 | ms                |
| Leakage Current<br>(V <sub>in</sub> = 250Vac, F <sub>in</sub> = 60Hz)                                       |        | I <sub>IN</sub> |     |         | 3          |                 | mArms             |
| Isolation   |        | Input/Output    |     | 3000    |            |                 | V <sub>ac</sub>   |
|   |        |                 |     | 1500    |            |                 | V <sub>ac</sub>   |
|   |        |                 |     | 50      |            |                 | V <sub>dc</sub>   |

| 12V <sub>dc</sub> MAIN OUTPUT  |        |                  |     |      |                     |      |                   |
|--|--------|------------------|-----|------|---------------------|------|-------------------|
| Parameter  | Device | Symbol           | Min | Typ  | Max                 | Unit |                   |
| Output Power<br>(V <sub>in</sub> ≥ 180V <sub>ac</sub><br>V <sub>in</sub> ≤ 175V <sub>ac</sub><br>V <sub>in</sub> ≤ 90V <sub>ac</sub> ) | All    | W                | -   | -    | 1250<br>1000<br>900 | W    |                   |
| Set point  |        | V <sub>out</sub> |     | 11.9 | 12.00               | 12.1 | V <sub>dc</sub>   |
| Overall regulation (load, temperature, aging)  |        |                  |     | -3   |                     | +3   | %                 |
| Ripple and noise <sup>3</sup>  |        |                  |     |      |                     | 120  | mV <sub>p-p</sub> |
| Turn-ON overshoot  |        |                  |     |      |                     | +3   | %                 |
| Turn-ON delay  |        | T                |     |      |                     | 2    | sec               |

### 12V<sub>dc</sub> MAIN OUTPUT (continued)

<sup>1</sup> Derated above 50°C at 2.5%/°C

<sup>2</sup> 12V output can decay down to 10.8V

<sup>3</sup> Measured across a 10μf electrolytic and a 0.1μf ceramic capacitors in parallel. 20MHz bandwidth

## CAR1212FP series rectifier

Input: 85Vac to 264Vac; Output: 12 Vdc @ 1250W; 5 Vdc @ 0.5A

| Parameter  | Device | Symbol    | Min  | Typ | Max         | Unit        |
|--|--------|-----------|------|-----|-------------|-------------|
| Remote ON/OFF delay time   | All    |           |      |     | 20          | ms          |
| Turn-ON rise time (10 – 90% of $V_{out}$ )   |        |           |      |     | 50          | ms          |
| Transient response 50% step [10%-60%, 50% - 100%]<br>( $di/dt - 1A/\mu s$ , recovery 300 $\mu s$ ) |        |           | -5   |     | +5          | % $V_{out}$ |
| Programmable range (hardware & software)   |        | $V_{out}$ | 11.4 |     | 12.6        | $V_{dc}$    |
| Overvoltage protection, latched<br>(recovery by cycling OFF/ON via hardware or software)           |        |           | 14.5 | 15  | 15.5        | $V_{dc}$    |
| Output current<br>$V_{in} = HL$<br>$V_{in} = LL$   |        |           | 0    |     | 104<br>83.5 | $A_{dc}$    |
| Current limit, Hiccup (programmable level)<br>HL / LL  |        | $I_{out}$ | 110  |     | 145         | % of FL     |
| Active current share   |        |           | -5   |     | +5          | % of FL     |

| AUXILIARY OUTPUT                              |        |           |     |     |     |          |
|---|--------|-----------|-----|-----|-----|----------|
| Parameter                                     | Device | Symbol    | Min | Typ | Max | Unit     |
| Set point                                     | All    | $V_{out}$ |     | 5.0 |     | $V_{dc}$ |
| Overall regulation (load, temperature, aging) | All    | $V_{out}$ | -5  |     | +5  | %        |
| Ripple and noise                              | All    |           |     |     | 50  | mVp-p    |
| Output current                                | All    | $I_{out}$ | 0   |     | 0.5 | $A_{dc}$ |
| Isolation Output/Frame                        | All    |           | 50  |     |     | $V_{dc}$ |

| Environmental, Reliability       |     |                    |          |                     |   |  |
|----------------------------------|-----|--------------------|----------|---------------------|---|--|
| Parameter                        | Min | Typ                | Max      | Units               | Notes   |  |
| Ambient Temperature              | -10 |                    | 50       | $^{\circ}C$         | Air inlet from sea level to 5,000 feet.<br>51 $^{\circ}C$ to 70 $^{\circ}C$<br>Above 5,000 ft |  |
| Operating                        |     |                    | 1524/5k  | m / ft              |   |  |
| Altitude Operating               |     |                    | 2.5      | %/ $^{\circ}C$      |   |  |
| Power Derating                   |     |                    | 2.0      | $^{\circ}C/1000$ ft |   |  |
| Storage                          | -40 |                    | 85       | $^{\circ}C$         |   |  |
| Altitude non-operating           |     |                    | 8200/30k | m / ft              |   |  |
| Acoustic noise                   |     |                    | 45       | dbA                 | Full load, 25 $^{\circ}C$   |  |
| Over Temperature Protection      |     | 110/95             |          | $^{\circ}C$         | Shutdown / restart  |  |
| Humidity                         | 30  |                    | 95       | %                   | Relative humidity, non-condensing   |  |
| Operating                        |     |                    | 10       |                     |   |  |
| Shock and Vibration acceleration |     |                    | 6        | Grms                | NEBS GR-63-CORE, Level 3, 20 -2000Hz, min 30 minutes  |  |
| Earthquake Rating                | 4   |                    |          | Zone                | NEBS GR-63-CORE, all floors, Seismic Zone 4 Designed and tested to meet NEBS specifications.  |  |
| MTBF                             |     | 320,000<br>100,000 |          | hrs                 | Full load, 25 $^{\circ}C$ per Bellcore RPP<br>Full load, 50 $^{\circ}C$ per Bellcore RPP      |  |

# CAR1212FP series rectifier

Input: 85Vac to 264Vac; Output: 12 Vdc @ 1250W; 5 Vdc @ 0.5A

| EMC                |                     |   |       |                                  |
|--------------------|---------------------|---|-------|----------------------------------|
| Parameter          | Criteria            | Standard  | Level | Test                             |
| AC input           | Conducted emissions | EN55032, FCC Docket 20780 part 15, subpart J<br>EN61000-3-2 | A*    | 0.15 – 30MHz<br>0 – 2 KHz        |
|                    | Radiated emissions  | EN55032   | A*    | 30 – 10000MHz                    |
|                    | Voltage dips        | EN61000-4-11  | A     | -30%, 10ms                       |
|                    |                     |   | C     | -60%, 100ms                      |
|                    |                     |   | C     | -100%, 5sec                      |
|                    | Voltage surge       | EN61000-4-5   | A     | 4kV, 1.2/50µs, common mode       |
|                    |                     |   | A     | 2kV, 1.2/50µs, differential mode |
| immunity           | Fast transients     | EN61000-4-4   | B     | 5/50ns, 2kV (common mode)        |
| Enclosure immunity | Conducted RF fields | EN61000-4-6   | A     | 130dBµV, 0.15-80MHz, 80% AM      |
|                    | Radiated RF fields  | EN61000-4-3   | A     | 10V/m, 80-1000MHz, 80% AM        |
|                    |                     | ENV 50140   | A     |                                  |
|                    | ESD                 | EN61000-4-2   | B     | 4kV contact, 8kV air             |

\* Note: Contact the factory for a recommended external EMI filter to meet Class B emissions

## Status and Control

Details of analog controls are provided in this data sheet under Signal Definitions. GE Energy will provide separate application notes on the I2C protocol. Contact your local GE Energy representative for details.

## Signal Definitions

All signals and outputs are referenced to Output return. These include ‘Vstb return’ and ‘Signal return’.

## Input Signals

**Voltage programming (V<sub>prog</sub>):** An analog voltage on this signal can vary the output voltage ± 5% from 11.4Vdc to 12.6Vdc. The equation of this signal is:

$$V_{out} = 11.4 + (V_{prog} * 0.3) \quad 0 < V_{prog} < 4$$

If V<sub>prog</sub> is > 4V or left open the programming signal is ignored and the unit output is set at the setpoint of 12Vdc.

**Load share (Ishare):** This is a single wire analog signal that is generated and acted upon automatically by power supplies connected in parallel. The Ishare pins should be tied together for power supplies if active current share among the power supplies is desired. No resistors or capacitors should get connected to this pin.

**Remote ON/OFF:** Controls the presence of the main 12Vdc output voltage. This is an open collector, TTL level control signal. This signal needs to be pulled HI externally through a resistor. Maximum collector voltage is 12Vdc and the maximum sink current is 20mA. A Logic 1 (TTL HI level) turns ON the 12Vdc output, while a Logic 0 (TTL LO level) turns OFF the 12Vdc output.

This signal is not overwritten by the firmware ON/OFF instruction. The default firmware setting is ON. An OFF command either through this signal or firmware would turn OFF the power supply.

The default state re-initializes if bias power is interrupted to the processor.

**Enable:** This is a short signal pin that controls the presence of the 12Vdc main output. This pin should be connected to ‘output return’ on the system side of the output connector. The purpose of this pin is to ensure that the output turns ON after engagement of the power blades and turns OFF prior to disengagement of the power blades.

**Write protect (WP):** This signal protects the contents of the EEPROM from accidental over writing. When left open the EEPROM is write protected. A LO (TTL compatible) permits writing to the EEPROM. This signal is pulled HI internally by the power supply. Used only for factory programming

## Output signals

**Output current monitor (I<sub>mon</sub>):** A voltage level of 0.05V / A proportional to the delivered output current is present on this pin. Accuracy ±10% of FL at loads > 25% of FL.

**AC OK:** A TTL compatible status signal representing whether the input voltage is within the anticipated range. This signal needs to be pulled HI externally through a resistor. Maximum sink current ≤ 20mA and the max voltage is 12Vdc. Open collector (HI) on this signal indicates that the input voltage is applied within the specified input range.

**DC OK:** A TTL compatible status signal representing whether the output voltage is present. This signal needs to be pulled HI externally through a resistor. Maximum sink current ≤ 20mA

# CAR1212FP series rectifier

Input: 85Vac to 264Vac; Output: 12 Vdc @ 1250W; 5 Vdc @ 0.5A

and the max voltage is 12Vdc. Open collector (HI) on this signal indicates that the output voltage is present.

**Over temp warning:** A TTL compatible status signal representing whether an over temperature exists. This signal needs to be pulled HI externally through a resistor. Maximum sink current  $\leq 20\text{mA}$  and the max voltage is 12Vdc. Open collector (HI) on this signal indicates that temperatures are normal.

If an over temperature should occur, this signal would pull LO for approximately 10 seconds prior to shutting down the power supply. The unit would restart if internal temperatures recover within normal operational levels. At that time the signal reverts back to its open collector (HI) state.

**Fault:** A TTL compatible status signal representing whether a Fault occurred. This signal needs to be pulled HI externally through a resistor. Maximum sink current  $\leq 4\text{mA}$  and the max voltage is 12Vdc. Open collector (HI) on this signal indicates that no Fault is present.

This signal activates for OTP, OVP, OCP, AC fault or No output.

**PS Present:** This pin is connected to ‘output return’ within the power supply. Its intent is to indicate to the system that a power supply is present. This signal may need to be pulled HI externally through a resistor.

**Interrupt (SMBAlert):** A TTL compatible status signal, representing the SMBusAlert# feature of the PMBus compatible i<sup>2</sup>C protocol in the power supply. This signal needs to be pulled HI externally through a resistor. Maximum sink current  $\leq 4\text{mA}$  and the pull up resistor should be tied to 3.3Vdc. Open collector (HI) on this signal indicates that no Interrupt has been triggered.

## Serial Bus Communications

The I<sup>2</sup>C interface facilitates the monitoring and control of various operating parameters within the unit and transmits these on demand over an industry standard I<sup>2</sup>C Serial bus.

All signals are referenced to ‘Signal Return’.

**Device addressing:** The microcontroller (MCU) and the EEPROM have the following addresses:

| Device | Address | Address Bit Assignments (Most to Least Significant) |   |   |   |    |    |    |     |
|--------|---------|---|---|---|---|----|----|----|-----|
| MCU    | 0xBx    | 1   | 0 | 1 | 1 | A2 | A1 | A0 | R/W |
| EEPROM | 0xAx    | 1   | 0 | 1 | 0 | A2 | A1 | A0 | R/W |

**Address lines (A2, A1, A0):** These signal pins allow up to eight (8) modules to be addressed on a single I<sup>2</sup>C bus. The pins are pulled HI internal to the power supply. For a logic LO these pins should be connected to ‘Output Return’

**Serial Clock (SCL):** The clock pulses on this line are generated by the host that initiates communications across the I<sup>2</sup>C Serial bus. This signal is not pulled up internally. The end user should add pull up resistance to 5Vdc as necessary to ensure that rise and fall time timing and the maximum sink current is in compliance to the I<sup>2</sup>C specifications.

**Serial Data (SDA):** This line is a bi-directional data line. . This signal is not pulled up internally . The end user should add pull up resistance to 5Vdc as necessary to ensure that rise and fall time timing and the maximum sink current is in compliance to the I<sup>2</sup>C specifications.

## Communications Protocol

The I<sup>2</sup>C protocol is described in detail by the *I<sup>2</sup>C and PMBus Serial Communications Protocol for the CAR Family of Power Supplies* application note.

The Y01A suffix module supports only the I<sup>2</sup>C command set.

## I/O Expander option (PCF8574ATD-T)

The CAR1212FPx without extended i2c communications (blank under the software option) has a single status/control byte I/O expander that is accessible via default address

0x 7Eh (A2, A1, A0 are pulled HI). This byte takes the form;

| 7   | 6   | 5     | 4      | 3       | 2   | 1    | 0    |
|-----|-----|-------|--------|---------|-----|------|------|
| n/s | n/s | Fault | ON/OFF | Temp_OK | n/s | DCOK | ACOK |

n/s – not supported

Bits 0, 1, 3, and 5 are ‘read\_only’ and are HI [1] during normal operation. The rectifier needs to be biased externally in order to ‘read’ its operational state without the presence of input power.

Bit 4 is a ‘read/write’ bit that can be used to verify the ON/OFF commanded state or change the commanded output of the rectifier. In order to turn the output OFF this bit needs to be pulled LO [0].

No PEC support is provided. Standard i<sup>2</sup>c commands apply.

## LEDs

Three LEDs are located on the front faceplate. The AC\_OK LED provides visual indication of the INPUT signal function. When the LED is ON GREEN the power supply input is within normal design limits.

When the DC\_OK LED is GREEN the DC output is present.

When the FAULT\_LED is RED then a fault condition exists and the power supply may not provide output power. The table below further defines these states:

# CAR1212FP series rectifier

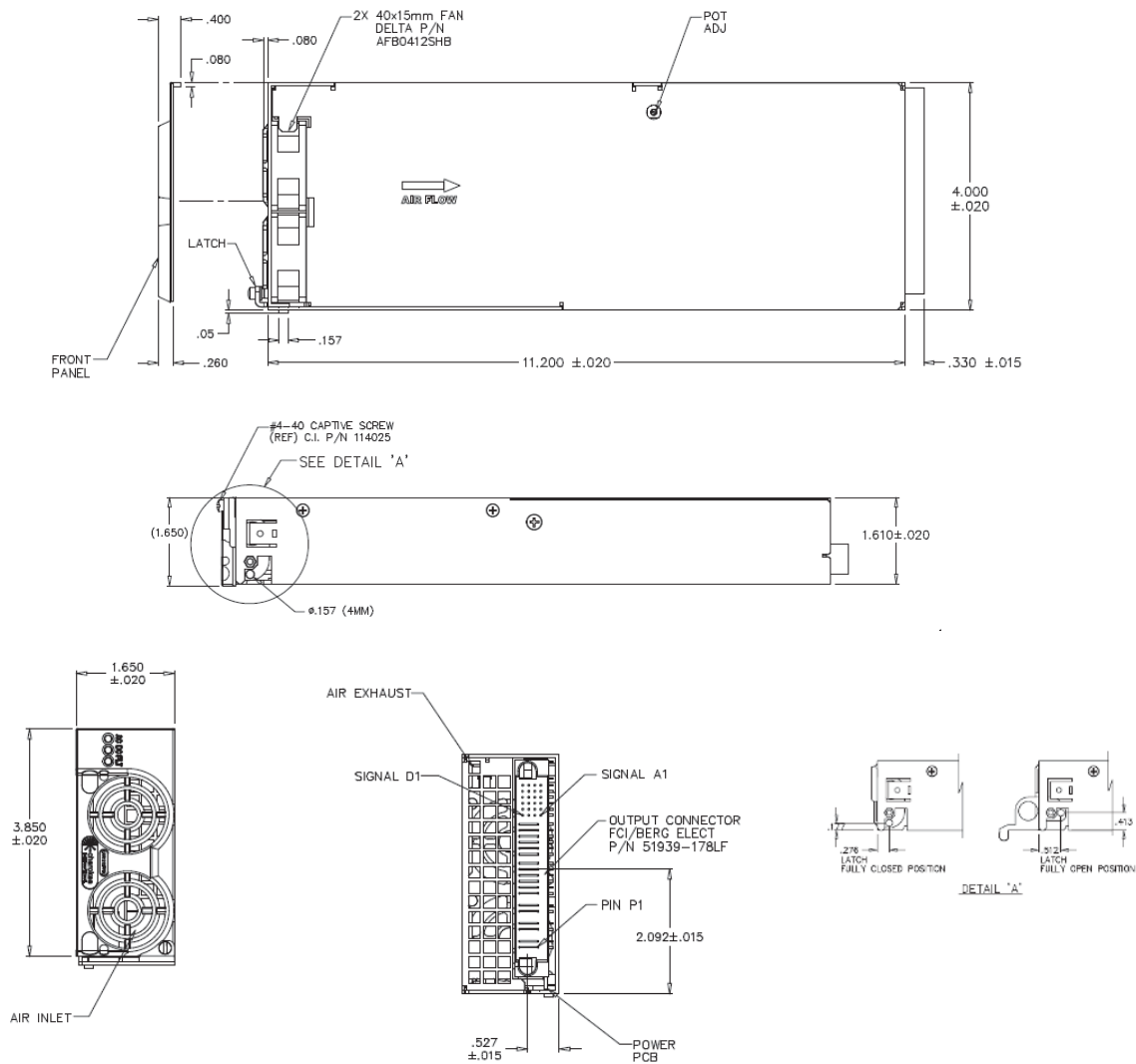
Input: 85Vac to 264Vac; Output: 12 Vdc @ 1250W; 5 Vdc @ 0.5A

## Alarm Table

| Test Condition |                  | LED Indicator |       |       | Monitoring Signals |       |          |         |
|----------------|------------------|---------------|-------|-------|--------------------|-------|----------|---------|
|                |                  | AC OK         | DC OK | FAULT | FAULT              | DC OK | INPUT OK | TEMP OK |
| 1              | Normal Operation | Green         | Green | OFF   | High               | High  | High     | High    |
| 2              | Low or NO INPUT  | OFF           | OFF   | Red   | Low                | Low   | Low      | High    |
| 3              | OVP              | Green         | OFF   | Red   | Low                | Low   | High     | High    |
| 4              | Over Current     | Green         | OFF   | Red   | Low                | Low   | High     | High    |
| 5              | Over Temp Alarm  | Green         | Green | Red   | Low                | High  | High     | Low     |
| 6              | Over Temp Fault  | Green         | OFF   | Red   | Low                | Low   | High     | Low     |

Notes: Test condition #2 had 2 modules plug in. One module is running and the other one is with no AC.

## Outline Drawing

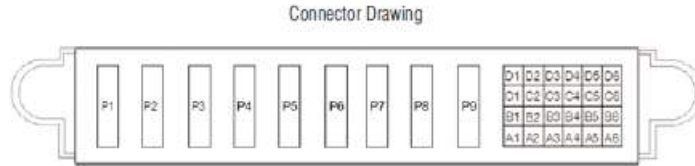


# CAR1212FP series rectifier

Input: 85Vac to 264Vac; Output: 12 Vdc @ 1250W; 5 Vdc @ 0.5A

## Connector Pin Assignments

**Mating Connector:** FCI/Berg P/N 51939-178  
 Mating connector: Primary Source: FCI berg P/N 51866-025 (right angle mounting)  
 or FCI berg P/N 51940-117 (straight mounting)



| Pin | Function           | Pin | Function                   | Pin | Function                      | Pin | Function       |
|-----|--------------------|-----|----------------------------|-----|-------------------------------|-----|----------------|
| A1  | Vstb [5V]          | B1  | Fault                      | C1  | IShare                        | D1  | VProg          |
| A2  | Vstb [5V] Return   | B2  | I Monitor (IMON)           | C2  | No connect                    | D2  | OVP Test Point |
| A3  | Signal Return      | B3  | Enable: "0" -ON "1" -OFF   | C3  | Over Temp Warning             | D3  | Remote ON/OFF  |
| A4  | Write Protect (WP) | B4  | PS Present                 | C4  | I <sup>2</sup> C Address (A0) | D4  | DC OK          |
| A5  | Remote Sense (+)   | B5  | SDA (I <sup>2</sup> C bus) | C5  | I <sup>2</sup> C Address (A1) | D5  | AC OK          |
| A6  | Remote Sense (-)   | B6  | SCL (I <sup>2</sup> C bus) | C6  | I <sup>2</sup> C Address (A2) | D6  | SMBAlert       |

|         |               |    |         |    |         |        |         |
|---------|---------------|----|---------|----|---------|--------|---------|
| P1      | Line          | P2 | Neutral | P3 | Chassis |        |         |
| P4 – P6 | Output Return |    |         |    |         | P7– P9 | +12Vout |

## Ordering Information

Please contact your GE Energy Sales Representative for pricing, availability and optional features.

| PRODUCT         | DESCRIPTION   | PART NUMBER      |
|-----------------|---|------------------|
| 1250W Rectifier | +12Vout , 5Vaux, RoHS 6 of 6                              | CAR1212FPXXXZ01A |
| 1250W Rectifier | +12Vout , 5Vaux, with face plate, RoHS 6 of 6             | CAR1212FPBX5Z01A |
| 1250W Rectifier | +12Vout , 5Vaux, with face plate, I2C option, RoHS 6 of 6 | CAR1212FPBC5Z01A |
| 1250W Rectifier | +12Vout , 5Vaux, with I2C option, RoHS 6 of 6             | CAR1212FPXC5Z01A |

## Contact Us

For more information, call us at

USA/Canada:

**+1 888 546 3243**, or +1 972 244 9288

Asia-Pacific:

+86-21-53899666

Europe, Middle-East and Africa:

+49.89.878067-280

[Go.ABB/Industrial](http://Go.ABB/Industrial)



GE Critical Power reserves the right to make changes to the product(s) or information contained herein without notice, and no liability is assumed as a result of their use or application. No rights under any patent accompany the sale of any such product(s) or information.