

AFE-BREAKOUT-MVK MAVRK Module

Technical Reference Manual



Literature Number: SLAU380
October 2011

1	Purpose of this document	5
2	EVM Overview	6
2.1	EVM Description	6
2.2	Highlighted Products	7
2.3	EVM Wiki	7
2.4	EVM Landing Page	7
3	Hardware Description	7
3.1	Power Requirements	7
3.2	Connector Signal Descriptions	7
3.3	Getting Started: Configuring the EVM	7
3.4	EVM Jumpers, LEDs, and Test Points	7
4	Software Description	8
4.1	MAVRK Software Minimum Requirements	8
4.2	How to get the MAVRK Software	8
4.3	Where do I find the MAVRK Qt Demo Application?	8
4.4	Where do I find the Demo and Test Code?	8
5	Software Project	9
5.1	Getting Started	9
5.2	UART Demo	9
5.3	SPI Demo	9
5.4	I2C Demo	10
5.5	Outputting and Inputting on the GPIO	10
6	Board Files	10
6.1	Bill of Materials (BOM)	10
6.2	Layout (PDF)	11
6.3	Schematics (PDF)	11
6.4	Fabrication Drawings (PDF)	12
6.5	Request Gerber and Schematic files	12
7	MAVRK Links	12
7.1	I want more info on MAVRK	12
7.2	I have MAVRK Questions	12
7.3	I want more Technical Info on MAVRK Hardware	12
7.4	I want more Technical Info on MAVRK Software	13
7.5	I want to get a MAVRK board	13
8	Important Notices	13
8.1	ESD Precautions	13
8.2	Certifications	14
8.3	Evaluation Board/Kit Important Notice	14
8.4	FCC Warning	14
8.5	EVM Warnings and Restrictions	14

1 Purpose of this document

This document discusses the Modular and Versatile Reference Kit (MAVRK) AFE Breakout module. The AFE-BREAKOUT-MVK provides quick visual inspection of the AFE bus signals via LEDs, as well as a way to easily interface electrically to the AFE bus through headers.

2 EVM Overview

2.1 EVM Description

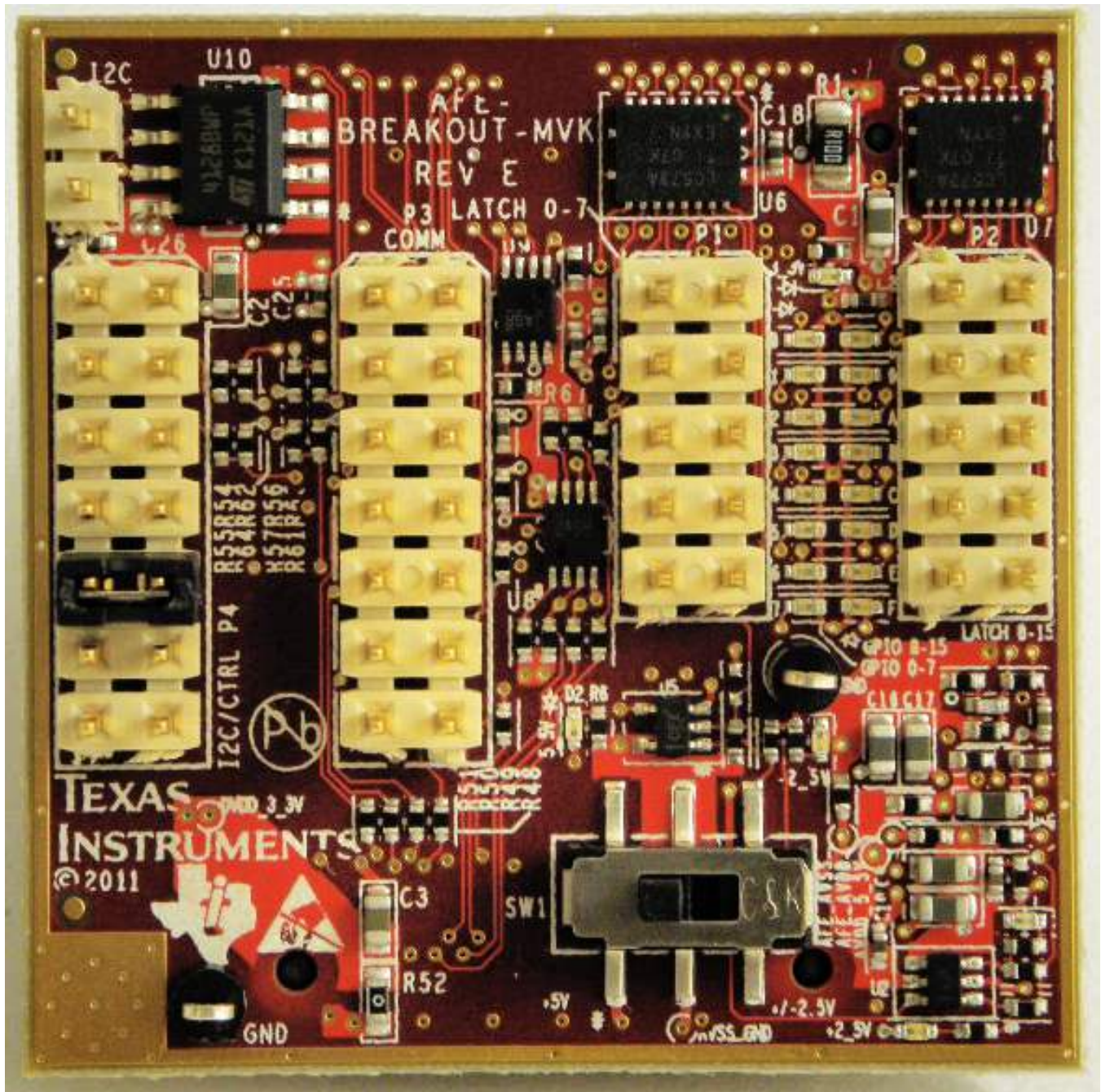


Figure 1.

The AFE-BREAKOUT-MVK enables easy debug of the AFE bus by making all the pins available on standard 100mil pin headers for probing or connecting to an external logic analyzer. Furthermore, each GPIO is connected to an LED that turns on when the pin is in a logic high state. A D-type latch holds the state of the GPIOs while the MCU communicates to other AFE modules. The [Hardware Design Guide for MAVRK AFE Modules](#) contains more information regarding the GPIO latch.

2.2 Highlighted Products

The following devices are utilized on the AFE Breakout board:

- [TS5A3159 1-Ohm SPDT Analog Switch](#)
- [TPS62120 15V, 75mA, 96% efficiency Step-Down Converter](#)
- [TPS63700 Adjustable, -15V Output Inverting DC/DC Converter in 3x3 QFN](#)
- [SN74LVC1G08 Single 2-Input Positive-AND Gate](#)
- [SN74LVC573A Octal Transparent D-Type Latches With 3-State Outputs](#)
- [TS5A2066 Dual-Channel 10-Ohm SPST Analog Switch](#)

2.3 EVM Wiki

[AFE Breakout Wiki](#)

2.4 EVM Landing Page

[AFE Breakout Module Product Folder](#)

3 Hardware Description

3.1 Power Requirements

The AFE-BREAKOUT-MVK can be connected to a [MAVRK Motherboard](#) through any of the AFE slots. Power (3.3 V and 5.5 V) is supplied by the host board through the AFE connectors. DC/DC converters on the AFE Breakout board generate +5 V or +/-2.5 V rails for the SCI modules to use.

Please note that if you use a companion (adjacent) SCI module that generates power to the AFE slot, you should remove resistors R53 and R60.

3.2 Connector Signal Descriptions

For detailed connector pinout information, see the [AFE Pinout for MAVRK](#).

3.3 Getting Started: Configuring the EVM

The preferred method of working with this EVM is through a [MAVRK Motherboard](#). The motherboard, along with a [MAVRK MCU](#) module, provides the needed power and digital control for this EVM. When used with the [MB-PRO-MVK](#), the AFE-BREAKOUT-MVK can be used in any of the 4 AFE slots to test both the left and right MCU busses. See the [Hardware Design Guide for MAVRK AFE Modules](#) for details on AFE-MCU communication.

3.4 EVM Jumpers, LEDs, and Test Points

Table 1 lists all the LEDs and headers available on the AFE Breakout board. The headers are connected directly to the AFE bus and care should be taken when probing them. [Click Here](#) to see a map of the LEDs on the board.

Table 1: EVM LEDs and Headers

Table 1.

Reference Designator	Function
D1	DVDD_3_3V indicator LED. Turns on when DVDD_3_3V is present.
D2	AVDD_5_5V indicator LED. Turns on when AVDD_5_5V is present.
D5	+5 V indicator LED. Turns on when the +5 V rail is enabled.
D6	+2.5 V indicator LED. Turns on when the +/-2.5 V split rail is enabled.

Table 1. (continued)

D8	-2.5 V indicator LED. Turns on when the +/-2.5 V split rail is enabled.
D10-D25	AFE_GPIO1_x logic state indicator LEDs. Turns on when the AFE_GPIO1_x logic level is high.
P1	Latch 0-7 header. Provides access to AFE_GPIO_[0:7] signals.
P2	Latch 8-15 header. Provides access to AFE_GPIO_[8:15] signals.
P3	COMM header. Provides access to UART, SPI, CAN, and Inter-AFE communication lines.
P4	I2S/CTRL Header. Provides access to the I2S lines as well as the module control signals.
P5	I2C header. Provides access to the I2C clock and data lines.
SW1	Analog power supply selection switch. Selects between single (+5 V) and dual (+/-2.5 V) supplies.

4 Software Description

4.1 MAVRK Software Minimum Requirements

- [IAR Embedded Workbench](#) software or [TI Code Composer Studio](#) software installed on PC
- [MSP-FET430UIF - MSP430 USB Debugging Interface](#)
- USB Cable(A to Micro AB) to power the MAVRK Pro motherboard
- Windows XP SP3 or Windows 7

4.2 How to get the MAVRK Software

You will need the MAVRK Software repository installed on your PC. This repository will sync the MAVRK firmware to your PC.

Please see [Software Installation Guide](#).

4.3 Where do I find the MAVRK Qt Demo Application?

An application to visual packet information from the embedded system can be found in the **mavrk_qt_tool** software repository under the **Released Version - QT Demo Application** directory. Please see [Software Installation Guide](#) for instructions on cloning the QT Tool project.

If you desire to create your own Qt demonstration, please reference the following resources:

- [MAVRK Qt GUI SDK Installation Guide](#)
- [MAVRK Qt GUI Build Guide](#)

4.4 Where do I find the Demo and Test Code?

From the software library, synchronized from the Gerrit server you will find:

- Driver code related to the specific part can be found in a folder under the **mavrk_embeddedModular_EVM_Libraries\Components** directory.
- Projects utilizing this part are located under the **mavrk_embeddedModular_EVM_Projects** folder.

5 Software Project

5.1 Getting Started

A software project named `AFE_Breakout_Demo` exists in the `mavrk_embedded\Modular_EVM_Projects\Component_Demo_Projects\AFE_Breakout_Board_Demo_Project` software repository directory. This project contains demo code for using the UART, SPI and I2C buses in the AFE breakout board. MAVRK Boards may be interconnected via the AFE breakout boards using the above mentioned buses.

This demo expects the AFE Breakout board to be in the AFE1 slot.

There actually three difference configuration in the one project (one for each bus). To select one of the configurations click on the drop down box in the "Workspace" window (on the left hand side of the screen) and select the bus that you would like to use. Only one configuration can be used at one time. There are three choices:

- UART_Demo
- I2C_Demo
- SPI_Demo

After selecting one of the configurations compile (using "Make") the project and program the board.

5.2 UART Demo

Generally for board to board communications, there would be atleast two boards. In this case only one is used. The way that send and receive is verified in this project is by connecting the RX and TX lines on the AFE breakout board. What the loopback does is any signal that is transmitted will come back to this device. So when there is a valid receive this proves that the device can transmit and receive successfully. The signals for the UART bus are located on the P3 header on the AFE breakout board. The TX signal is located on header P3 on the 3rd pin. The RX signal is on the same header on the 5th pin. A standard jumper may be used to interconnect these two signals.

The UART is set by default in the `mvk_Init_MAVRK_Standard_Settings` function to a baud rate of 460K and 8 bits data, no parity and one stop bit.

Before writing to the UART a handle has to be created and registered using this function call:

```
UartDebugHandle = mvk_Register_UART_Tx (MAVRK_UART_P1P2, MAVRK_AFE1, 2, SET, CLEAR); // Priority
2, Fast Print, Do not overwrite
```

This sets the `UartDebugHandle` to the device which is in AFE1 slot. This handle is later used to communicate with this device.

Then it continually makes this function call which sends the message out.

```
mvk_UART_Debug_Printf_Flush (UartDebugHandle, "Hello from MCU UART", 19);
```

The demo continually sends a "Hello from UART". To verify that this transfer is sending and receiving correctly, a breakpoint may be placed in the `user_Decode_UART_RX_Data(...)` function. This function is called when there is an incoming UART character. The character that has arrived is given in the `data` parameter. A watch may be placed on this variable and viewed to determine which character has just arrived.

For more information on utilizing the MAVRK UART APIs please refer to [MAVRK UART Functions](#).

5.3 SPI Demo

The SPI demo continually sends a message through the SPI bus. As in the case with UART, a loopback is used on the MOSI (output) and MISO (input) pins to test the input portion of the SPI bus.

The signals for the SPI bus are located on the P3 header on the AFE breakout board. The SPI clock is on pin 9, the chip select in on pin 7, MOSI is on pin 11 and MISO in on pin 13.

To setup the SPI port this function call is used:

```
mvk_Configure_SPI_Device_Working_Settings (MAVRK_AFE1, &AFE1_SPI_device_settings);
```

Which configures the SPI bus to the AFE1 module device settings.

The project continually sends "Hello from MCU SPI". This sending and receiving may be verified by placing a breakpoint on the SPI call (`mvk_Write_SPI_Payload (MAVRK_AFE1, "Hello from MCU SPI", read, 18, 0)`). After this line is executed the `read` variable will hold the results of the input (which should be the message).

For more information on utilizing the MAVRK SPI APIs please refer to [MAVRK SPI Functions](#).

5.4 I2C Demo

The I2C demo is different from the previous buses demo in that it does not use a loopback. It however writes to an EEPROM chip that is located on the AFE breakout board. This EEPROM (16Kx8) is used to store device information for the breakout board. This information is stored on the highest 256 bytes of the memory. This area should not be overwritten. Any other area is free to be used.

The project writes to the EEPROM chip an 8-bit value and reads that value back to make sure that it was written properly. The bus that is used to do this transfer is I2C.

The actual I2C write call happens deeper in the program but one example is this:

```
mvk_Write_I2C (I2C_slave_address, device_slot, EEPROM24xx128_I2C_write_data,  
total_number_write_bytes);
```

The first parameter is the I2C slave address to write to, the second is the device slot to use for the write (in this case MAVRK_AFE1), then the write data, and the amount of data to write. An example of the I2C read function may be found in the `mvk_Read_EEPROM_24xx128 ()` function which may be found in `EEPROM24xx128.c`.

This demo also demonstrates how the LEDs may be used in the breakout board. Currently only 8 of the LEDs are controllable. They are on the left column.

For more information on utilizing the MAVRK I2C APIs please refer to [MAVRK I2C Bus Functions](#).

5.5 Outputting and Inputting on the GPIO

It is only possible to output on the GPIO bus on the AFE breakout board as the bus is behind a register (Note: this is only the case on the AFE breakout board). Also although there are 16 lines on the bus, only the lower half are controllable.

There are two ways to configure this bus and use it. One way is to configure the whole port in one instruction or either break up the configuration to pin by pin.

To configure and set the whole bus in one instruction this function call is used:

```
mvk_Write_AFE_GPIO (0xff, MAVRK_AFE1); // turns on the whole port on
```

To set the port pin by pin this function may be used:

```
mvk_Write_AFE_GPIO_Pin (AFE_GPIO_PIN_7, CLEAR, MAVRK_AFE1); // writes to the top most pin to set  
it off only
```

This function call turns off the highest pin (7). The range of pins that may be used are `AFE_GPIO_PIN_0...AFE_GPIO_PIN_7`.

6 Board Files

6.1 Bill of Materials (BOM)

[Download a PDF](#) of the bill of materials.

AFE-BREAKOUT-MVK Bill of Materials

Component	Value	Quantity	Footprint
U1	AFE0801	1	AFE0801
U2	AFE0801	1	AFE0801
U3	AFE0801	1	AFE0801
U4	AFE0801	1	AFE0801
U5	AFE0801	1	AFE0801
U6	AFE0801	1	AFE0801
U7	AFE0801	1	AFE0801
U8	AFE0801	1	AFE0801
U9	AFE0801	1	AFE0801
U10	AFE0801	1	AFE0801
U11	AFE0801	1	AFE0801
U12	AFE0801	1	AFE0801
U13	AFE0801	1	AFE0801
U14	AFE0801	1	AFE0801
U15	AFE0801	1	AFE0801
U16	AFE0801	1	AFE0801
U17	AFE0801	1	AFE0801
U18	AFE0801	1	AFE0801
U19	AFE0801	1	AFE0801
U20	AFE0801	1	AFE0801
U21	AFE0801	1	AFE0801
U22	AFE0801	1	AFE0801
U23	AFE0801	1	AFE0801
U24	AFE0801	1	AFE0801
U25	AFE0801	1	AFE0801
U26	AFE0801	1	AFE0801
U27	AFE0801	1	AFE0801
U28	AFE0801	1	AFE0801
U29	AFE0801	1	AFE0801
U30	AFE0801	1	AFE0801
U31	AFE0801	1	AFE0801
U32	AFE0801	1	AFE0801
U33	AFE0801	1	AFE0801
U34	AFE0801	1	AFE0801
U35	AFE0801	1	AFE0801
U36	AFE0801	1	AFE0801
U37	AFE0801	1	AFE0801
U38	AFE0801	1	AFE0801
U39	AFE0801	1	AFE0801
U40	AFE0801	1	AFE0801
U41	AFE0801	1	AFE0801
U42	AFE0801	1	AFE0801
U43	AFE0801	1	AFE0801
U44	AFE0801	1	AFE0801
U45	AFE0801	1	AFE0801
U46	AFE0801	1	AFE0801
U47	AFE0801	1	AFE0801
U48	AFE0801	1	AFE0801
U49	AFE0801	1	AFE0801
U50	AFE0801	1	AFE0801
U51	AFE0801	1	AFE0801
U52	AFE0801	1	AFE0801
U53	AFE0801	1	AFE0801
U54	AFE0801	1	AFE0801
U55	AFE0801	1	AFE0801
U56	AFE0801	1	AFE0801
U57	AFE0801	1	AFE0801
U58	AFE0801	1	AFE0801
U59	AFE0801	1	AFE0801
U60	AFE0801	1	AFE0801
U61	AFE0801	1	AFE0801
U62	AFE0801	1	AFE0801
U63	AFE0801	1	AFE0801
U64	AFE0801	1	AFE0801
U65	AFE0801	1	AFE0801
U66	AFE0801	1	AFE0801
U67	AFE0801	1	AFE0801
U68	AFE0801	1	AFE0801
U69	AFE0801	1	AFE0801
U70	AFE0801	1	AFE0801
U71	AFE0801	1	AFE0801
U72	AFE0801	1	AFE0801
U73	AFE0801	1	AFE0801
U74	AFE0801	1	AFE0801
U75	AFE0801	1	AFE0801
U76	AFE0801	1	AFE0801
U77	AFE0801	1	AFE0801
U78	AFE0801	1	AFE0801
U79	AFE0801	1	AFE0801
U80	AFE0801	1	AFE0801
U81	AFE0801	1	AFE0801
U82	AFE0801	1	AFE0801
U83	AFE0801	1	AFE0801
U84	AFE0801	1	AFE0801
U85	AFE0801	1	AFE0801
U86	AFE0801	1	AFE0801
U87	AFE0801	1	AFE0801
U88	AFE0801	1	AFE0801
U89	AFE0801	1	AFE0801
U90	AFE0801	1	AFE0801
U91	AFE0801	1	AFE0801
U92	AFE0801	1	AFE0801
U93	AFE0801	1	AFE0801
U94	AFE0801	1	AFE0801
U95	AFE0801	1	AFE0801
U96	AFE0801	1	AFE0801
U97	AFE0801	1	AFE0801
U98	AFE0801	1	AFE0801
U99	AFE0801	1	AFE0801
U100	AFE0801	1	AFE0801

Figure 2.

6.2 Layout (PDF)

[Download a PDF](#) of additional board layers.

AFE-BREAKOUT-MVK Board Top Silkscreen

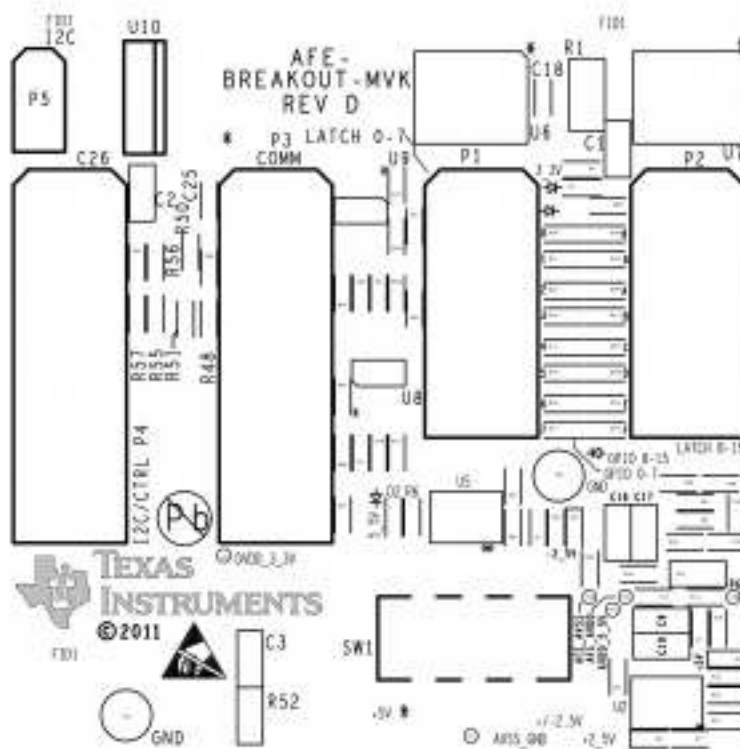


Figure 3.

6.3 Schematics (PDF)

[Download a PDF](#) of the schematic.

AFE-BREAKOUT-MVK Schematics

Table 2.

<ul style="list-style-type: none"> • Hardware Design Guide for MAVRK MCU Modules • Hardware Design Guide for MAVRK Modules • Hardware Design Guide for MAVRK PMU Charger Sub-Modules • Hardware Design Guide for MAVRK PMU DC/DC Sub-Modules 	<ul style="list-style-type: none"> • Hardware Design Guide for MAVRK PMU Gas Gauge Sub-Modules • Hardware Design Guide for MAVRK PMU High-Power DC/DC Sub-Modules • Hardware Design Guide for MAVRK SCI Modules • Hardware Design Guide for MAVRK SCI Sub-Modules 	<ul style="list-style-type: none"> • Hardware Design Guide for the uMAVRK Analog Interface • Hardware Design Guide for the uMAVRK Power Interface • Template - Hardware User's Guide
--	---	---

7.4 I want more Technical Info on MAVRK Software

Table 3.

<ul style="list-style-type: none"> • Demo Application - ADS1298 Demo on MAVRK • Demo Application - Sensors on uMAVRK • Demo Application - TCA8418 on MAVRK • Demo Application - UART Passthrough on MAVRK • Demo Application - UART Receiver on MAVRK • Demo Application - Wireless Keyboard on MAVRK • How to Convert a Project from IAR to CCS • IAR Broken Options Error • IAR Project Open Error • MAVRK - TortoiseGit Frequently Asked Questions • MAVRK Partners and Resources • MAVRK Qt Demo Application User Guide • MAVRK Qt GUI Build Guide 	<ul style="list-style-type: none"> • MAVRK Qt GUI SDK Installation Guide • MAVRK Radio Network • MAVRK Software Developers Guide • MAVRK Software Installation Guide • Running the TCA-8418 Demo (CCS) • Running the TCA8418 Demo (IAR) • Software - API Documentation for MAVRK Embedded Software Libraries • Software - CC11xx, CC25xx, CC430 Radio API Guide • Software - CPU Power Down Logic on Standard MAVRK Applications • Software - Coding Conventions for MAVRK Software • Software - Customizing a Demo Project • Software - Doxygen Conventions for MAVRK Software • Software - MAVRK Adding the Radio Demo to Another Demo 	<ul style="list-style-type: none"> • Software - MAVRK Embedded Project Abstraction Layers • Software - MAVRK I2C Bus Functions • Software - MAVRK SPI Bus Functions • Software - MAVRK UART Functions • Software - Main Processing Loop in Standard MAVRK Applications • Software - My First MAVRK Application (Using Code Composer) • Software - My First MAVRK Application (Using IAR) • Software - Programming with Elprotronic's FET-Pro430 Flash Programmer • Software - Selecting the CCS Workspace Directory • Software - Troubleshooting the MAVRK COM Port Connection to QT • Software Design Guide for MAVRK Modules • Stellaris-ICDI Programming
---	---	---

7.5 I want to get a MAVRK board

[MAVRK Home Page](#)

8 Important Notices

8.1 ESD Precautions

The following guidelines should be followed in order to avoid ESD damage to the board components:

- Any person handling boards must be grounded either with a wrist strap or ESD protective footwear, used in conjunction with a conductive or static-dissipative floor or floor mat.
- The work surface where boards are placed for handing, processing, testing, etc., must be made of static-dissipative material and be grounded to ESD ground.
- All insulator materials either must be removed from the work area or they must be neutralized with an ionizer. Static-generating clothes should be covered with an ESD-protective smock.
- When boards are being stored, transferred between operations or workstations, or shipped, they must be maintained in a Faraday-shield container whose inside surface (touching the boards) is static dissipative.

8.2 Certifications

[Eco-Info & Lead-Free Home](#)

[RoHS Compliant Solutions](#)

[Statement on Registration, Evaluation, Authorization of Chemicals \(REACH\)](#)

[FCC and EMC test report for the MAVRK STK-PRO430-MVK Starter Kit, featuring the AFE-BREAKOUT-MVK Module](#)

8.3 Evaluation Board/Kit Important Notice

Texas Instruments (TI) provides the enclosed product(s) under the following conditions: This evaluation board/kit is intended for use for ENGINEERING DEVELOPMENT, DEMONSTRATION, OR EVALUATION PURPOSES ONLY and is not considered by TI to be a finished end-product fit for general consumer use. Persons handling the product(s) must have electronics training and observe good engineering practice standards. As such, the goods being provided are not intended to be complete in terms of required design-, marketing-, and/or manufacturing-related protective considerations, including product safety and environmental measures typically found in end products that incorporate such semiconductor components or circuit boards. This evaluation board/kit does not fall within the scope of the European Union directives regarding electromagnetic compatibility, restricted substances (RoHS), recycling (WEEE), FCC, CE or UL, and therefore may not meet the technical requirements of these directives or other related directives. Should this evaluation board/kit not meet the specifications indicated in the Users Guide, the board/kit may be returned within 30 days from the date of delivery for a full refund. THE FOREGOING WARRANTY IS THE EXCLUSIVE WARRANTY MADE BY SELLER TO BUYER AND IS IN LIEU OF ALL OTHER WARRANTIES, EXPRESSED, IMPLIED, OR STATUTORY, INCLUDING ANY WARRANTY OF MERCHANTABILITY OR FITNESS FOR ANY PARTICULAR PURPOSE. The user assumes all responsibility and liability for proper and safe handling of the goods. Further, the user indemnifies TI from all claims arising from the handling or use of the goods. Due to the open construction of the product, it is the user's responsibility to take any and all appropriate precautions with regard to electrostatic discharge. EXCEPT TO THE EXTENT OF THE INDEMNITY SET FORTH ABOVE, NEITHER PARTY SHALL BE LIABLE TO THE OTHER FOR ANY INDIRECT, SPECIAL, INCIDENTAL, OR CONSEQUENTIAL DAMAGES. TI currently deals with a variety of customers for products, and therefore our arrangement with the user is not exclusive. TI assumes no liability for applications assistance, customer product design, software performance, or infringement of patents or services described herein. Please read the Users Guide and, specifically, the Warnings and Restrictions notice in the Users Guide prior to handling the product. This notice contains important safety information about temperatures and voltages. For additional information on TI's environmental and/or safety programs, please contact the TI application engineer or visit www.ti.com/esh. No license is granted under any patent right or other intellectual property right of TI covering or relating to any machine, process, or combination in which such TI products or services might be or are used.

8.4 FCC Warning

This evaluation board/kit is intended for use for ENGINEERING DEVELOPMENT, DEMONSTRATION, OR EVALUATION PURPOSES ONLY and is not considered by TI to be a finished end-product fit for general consumer use. It generates, uses, and can radiate radio frequency energy and has not been tested for compliance with the limits of computing devices pursuant to part 15 of FCC rules, which are designed to provide reasonable protection against radio frequency interference. Operation of this equipment in other environments may cause interference with radio communications, in which case the user at his own expense will be required to take whatever measures may be required to correct this interference.

8.5 EVM Warnings and Restrictions

It is important to operate this EVM within the input voltage range of $\hat{a}\hat{c}$ 2.5V to +5V and the output voltage range of 0V to 5V. Exceeding the specified input range may cause unexpected operation and/or irreversible damage to the EVM. If there are questions concerning the input range, please contact a TI field representative prior to connecting the input power. Applying loads outside of the specified output range may result in unintended operation and/or possible permanent damage to the EVM. Please consult the EVM User's Guide prior to connecting any load to the EVM output. If there is uncertainty as to the load

specification, please contact a TI field representative. During normal operation, some circuit components may have case temperatures greater than +30°C. The EVM is designed to operate properly with certain components above +30°C as long as the input and output ranges are maintained. These components include but are not limited to linear regulators, switching transistors, pass transistors, and current sense resistors. These types of devices can be identified using the EVM schematic located in the EVM User's Guide. When placing measurement probes near these devices during operation, please be aware that these devices may be very warm to the touch.

Table 4.

	<i>For technical support on MAVRK please post your questions on The MAVRK Toolbox Forum . Please post only comments about the article AFE-BREAKOUT-MVK MAVRK Module here.</i>
--	--

IMPORTANT NOTICE

Texas Instruments Incorporated and its subsidiaries (TI) reserve the right to make corrections, modifications, enhancements, improvements, and other changes to its products and services at any time and to discontinue any product or service without notice. Customers should obtain the latest relevant information before placing orders and should verify that such information is current and complete. All products are sold subject to TI's terms and conditions of sale supplied at the time of order acknowledgment.

TI warrants performance of its hardware products to the specifications applicable at the time of sale in accordance with TI's standard warranty. Testing and other quality control techniques are used to the extent TI deems necessary to support this warranty. Except where mandated by government requirements, testing of all parameters of each product is not necessarily performed.

TI assumes no liability for applications assistance or customer product design. Customers are responsible for their products and applications using TI components. To minimize the risks associated with customer products and applications, customers should provide adequate design and operating safeguards.

TI does not warrant or represent that any license, either express or implied, is granted under any TI patent right, copyright, mask work right, or other TI intellectual property right relating to any combination, machine, or process in which TI products or services are used. Information published by TI regarding third-party products or services does not constitute a license from TI to use such products or services or a warranty or endorsement thereof. Use of such information may require a license from a third party under the patents or other intellectual property of the third party, or a license from TI under the patents or other intellectual property of TI.

Reproduction of TI information in TI data books or data sheets is permissible only if reproduction is without alteration and is accompanied by all associated warranties, conditions, limitations, and notices. Reproduction of this information with alteration is an unfair and deceptive business practice. TI is not responsible or liable for such altered documentation. Information of third parties may be subject to additional restrictions.

Resale of TI products or services with statements different from or beyond the parameters stated by TI for that product or service voids all express and any implied warranties for the associated TI product or service and is an unfair and deceptive business practice. TI is not responsible or liable for any such statements.

TI products are not authorized for use in safety-critical applications (such as life support) where a failure of the TI product would reasonably be expected to cause severe personal injury or death, unless officers of the parties have executed an agreement specifically governing such use. Buyers represent that they have all necessary expertise in the safety and regulatory ramifications of their applications, and acknowledge and agree that they are solely responsible for all legal, regulatory and safety-related requirements concerning their products and any use of TI products in such safety-critical applications, notwithstanding any applications-related information or support that may be provided by TI. Further, Buyers must fully indemnify TI and its representatives against any damages arising out of the use of TI products in such safety-critical applications.

TI products are neither designed nor intended for use in military/aerospace applications or environments unless the TI products are specifically designated by TI as military-grade or "enhanced plastic." Only products designated by TI as military-grade meet military specifications. Buyers acknowledge and agree that any such use of TI products which TI has not designated as military-grade is solely at the Buyer's risk, and that they are solely responsible for compliance with all legal and regulatory requirements in connection with such use.

TI products are neither designed nor intended for use in automotive applications or environments unless the specific TI products are designated by TI as compliant with ISO/TS 16949 requirements. Buyers acknowledge and agree that, if they use any non-designated products in automotive applications, TI will not be responsible for any failure to meet such requirements.

Following are URLs where you can obtain information on other Texas Instruments products and application solutions:

Products

Audio	www.ti.com/audio
Amplifiers	amplifier.ti.com
Data Converters	dataconverter.ti.com
DLP® Products	www.dlp.com
DSP	dsp.ti.com
Clocks and Timers	www.ti.com/clocks
Interface	interface.ti.com
Logic	logic.ti.com
Power Mgmt	power.ti.com
Microcontrollers	microcontroller.ti.com
RFID	www.ti-rfid.com
OMAP Mobile Processors	www.ti.com/omap
Wireless Connectivity	www.ti.com/wirelessconnectivity

Applications

Communications and Telecom	www.ti.com/communications
Computers and Peripherals	www.ti.com/computers
Consumer Electronics	www.ti.com/consumer-apps
Energy and Lighting	www.ti.com/energy
Industrial	www.ti.com/industrial
Medical	www.ti.com/medical
Security	www.ti.com/security
Space, Avionics and Defense	www.ti.com/space-avionics-defense
Transportation and Automotive	www.ti.com/automotive
Video and Imaging	www.ti.com/video

TI E2E Community Home Page

e2e.ti.com

Mailing Address: Texas Instruments, Post Office Box 655303, Dallas, Texas 75265
Copyright © 2011, Texas Instruments Incorporated