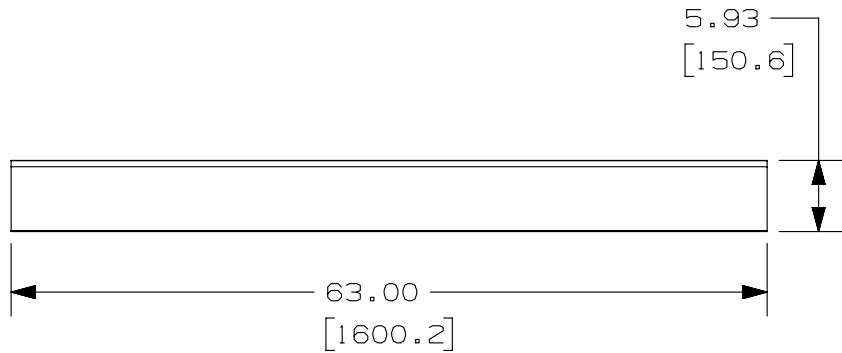
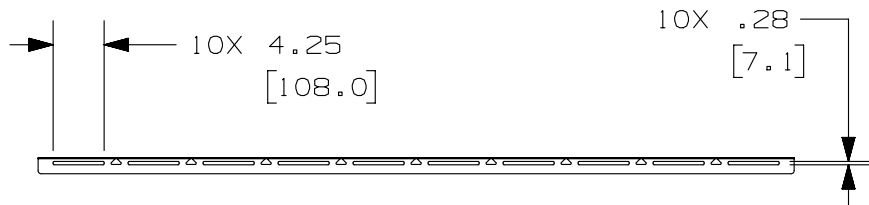


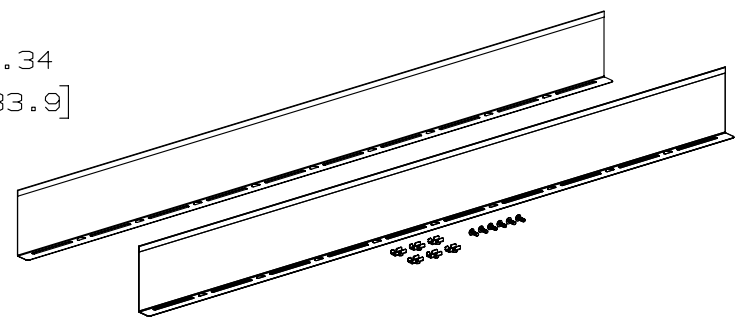
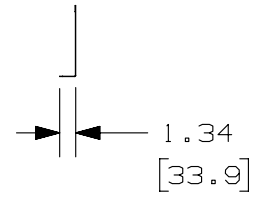
THIS COPY IS PROVIDED ON A RESTRICTED BASIS AND IS NOT TO BE USED IN ANY WAY DETRIMENTAL TO THE INTERESTS OF PANDUIT CORP.



PANDUIT PART NUMBER	WEIGHT
WGDW6**	8.25 LBS (3742.1 g)

NOTES:

- PANDUIT PART NUMBER WGDW6** INCLUDES:
 - TWO [2] 6" X 63" LONG WYR-GRID NOTCHED DIVIDER WALL
 - SIX [6] WYR-GRID TRUSS BOLT ASSEMBLIES
 - SIX [6] 1/4-20 X 3/4" LONG PHILLIPS TRUSS HEAD SCREWS
- DIMENSIONS IN PARENTHESES ARE METRIC.
- SEE CATALOG FOR ADDITIONAL PART SUFFIXES TO INDICATE PART FINISH AND/OR PACKAGE QUANTITY.



REV	DATE	BY	CHK	APR	DESCRIPTION	ECN
R	08-27-13	SSP	DWR	RN	RELEASED TO PRODUCTION	11D238CV-DC

TITLE 6" X 63" LONG WYR-GRID NOTCHED DIVIDER WALL (WGDW6**) CUSTOMER DRAWING					
ITEM REVISION NAME 11D238CV/00	PANDUIT				
DATASET FILE NAME 11D238CV-DC/00A WGDW6**					
UNLESS OTHERWISE SPECIFIED, DIMENSIONAL TOLERANCES ARE: IN [mm] .X ± .XXX ± .XX ± .5 [1.3] ANGLES ± 5 °	MATERIAL: STEEL				
THIRD ANGLE PROJECTION	DRAWING NUMBER: 11D238CV-DC				
DRAWN BY SSP	DATE 08-27-13	CHK DWR	SCALE NONE	SHT 1 OF 1	SIZE A

2

1

2

1