

ADS5421/22EVM

User's Guide

Literature Number: SBAU084
February 2003



IMPORTANT NOTICE

Texas Instruments Incorporated and its subsidiaries (TI) reserve the right to make corrections, modifications, enhancements, improvements, and other changes to its products and services at any time and to discontinue any product or service without notice. Customers should obtain the latest relevant information before placing orders and should verify that such information is current and complete. All products are sold subject to TI's terms and conditions of sale supplied at the time of order acknowledgment.

TI warrants performance of its hardware products to the specifications applicable at the time of sale in accordance with TI's standard warranty. Testing and other quality control techniques are used to the extent TI deems necessary to support this warranty. Except where mandated by government requirements, testing of all parameters of each product is not necessarily performed.

TI assumes no liability for applications assistance or customer product design. Customers are responsible for their products and applications using TI components. To minimize the risks associated with customer products and applications, customers should provide adequate design and operating safeguards.

TI does not warrant or represent that any license, either express or implied, is granted under any TI patent right, copyright, mask work right, or other TI intellectual property right relating to any combination, machine, or process in which TI products or services are used. Information published by TI regarding third-party products or services does not constitute a license from TI to use such products or services or a warranty or endorsement thereof. Use of such information may require a license from a third party under the patents or other intellectual property of the third party, or a license from TI under the patents or other intellectual property of TI.

Reproduction of information in TI data books or data sheets is permissible only if reproduction is without alteration and is accompanied by all associated warranties, conditions, limitations, and notices. Reproduction of this information with alteration is an unfair and deceptive business practice. TI is not responsible or liable for such altered documentation.

Resale of TI products or services with statements different from or beyond the parameters stated by TI for that product or service voids all express and any implied warranties for the associated TI product or service and is an unfair and deceptive business practice. TI is not responsible or liable for any such statements.

Mailing Address:

Texas Instruments
Post Office Box 655303
Dallas, Texas 75265

EVM IMPORTANT NOTICE

Texas Instruments (TI) provides the enclosed product(s) under the following conditions:

This evaluation kit being sold by TI is intended for use for **ENGINEERING DEVELOPMENT OR EVALUATION PURPOSES ONLY** and is not considered by TI to be fit for commercial use. As such, the goods being provided may not be complete in terms of required design-, marketing-, and/or manufacturing-related protective considerations, including product safety measures typically found in the end product incorporating the goods. As a prototype, this product does not fall within the scope of the European Union directive on electromagnetic compatibility and therefore may not meet the technical requirements of the directive.

Should this evaluation kit not meet the specifications indicated in the EVM User's Guide, the kit may be returned within 30 days from the date of delivery for a full refund. **THE FOREGOING WARRANTY IS THE EXCLUSIVE WARRANTY MADE BY SELLER TO BUYER AND IS IN LIEU OF ALL OTHER WARRANTIES, EXPRESSED, IMPLIED, OR STATUTORY, INCLUDING ANY WARRANTY OF MERCHANTABILITY OR FITNESS FOR ANY PARTICULAR PURPOSE.**

The user assumes all responsibility and liability for proper and safe handling of the goods. Further, the user indemnifies TI from all claims arising from the handling or use of the goods. Please be aware that the products received may not be regulatory compliant or agency certified (FCC, UL, CE, etc.). Due to the open construction of the product, it is the user's responsibility to take any and all appropriate precautions with regard to electrostatic discharge.

EXCEPT TO THE EXTENT OF THE INDEMNITY SET FORTH ABOVE, NEITHER PARTY SHALL BE LIABLE TO THE OTHER FOR ANY INDIRECT, SPECIAL, INCIDENTAL, OR CONSEQUENTIAL DAMAGES.

TI currently deals with a variety of customers for products, and therefore our arrangement with the user **is not exclusive**.

TI assumes **no liability for applications assistance, customer product design, software performance, or infringement of patents or services described herein**.

Please read the EVM User's Guide and, specifically, the EVM Warnings and Restrictions notice in the EVM User's Guide prior to handling the product. This notice contains important safety information about temperatures and voltages. For further safety concerns, please contact the TI application engineer.

Persons handling the product must have electronics training and observe good laboratory practice standards.

No license is granted under any patent right or other intellectual property right of TI covering or relating to any machine, process, or combination in which such TI products or services might be or are used.

Mailing Address:

Texas Instruments
Post Office Box 655303
Dallas, Texas 75265

EVM WARNINGS AND RESTRICTIONS

It is important to operate this EVM within the specified input and output ranges described in the EVM User's Guide.

Exceeding the specified input range may cause unexpected operation and/or irreversible damage to the EVM. If there are questions concerning the input range, please contact a TI field representative prior to connecting the input power.

Applying loads outside of the specified output range may result in unintended operation and/or possible permanent damage to the EVM. Please consult the EVM User's Guide prior to connecting any load to the EVM output. If there is uncertainty as to the load specification, please contact a TI field representative.

During normal operation, some circuit components may have case temperatures greater than 60°C. The EVM is designed to operate properly with certain components above 60°C as long as the input and output ranges are maintained. These components include but are not limited to linear regulators, switching transistors, pass transistors, and current sense resistors. These types of devices can be identified using the EVM schematic located in the EVM User's Guide. When placing measurement probes near these devices during operation, please be aware that these devices may be very warm to the touch.

Mailing Address:

Texas Instruments
Post Office Box 655303
Dallas, Texas 75265

ADS5421/22EVM

The ADS5421/22 evaluation module is designed for ease of use when evaluating the high-speed, analog-to-digital converters (ADCs) ADS5421 and ADS5422. Both converters offer 14 bits of resolution with sampling rates of up to 40MSPS for the ADS5421 and up to 62MSPS for the ADS5422. This EVM features two independent sections: one is configured for ac input coupling using a transformer; the other allows for dc-coupling by employing a differential amplifier. Each section is completely assembled and operational, featuring a dedicated layout; no reconfiguration by the user is needed. The data output of the ADS5421/22 converter is decoupled from the connector by a CMOS logic buffer.

Topic	Page
1.1 EVM Basic Functions	2
1.2 Power Supply	2
1.3 Signal Inputs	2
1.4 Input Full-Scale Range Selection	3
1.5 Clock	4
1.6 Data Output	4
1.7 External Reference	4
1.8 PCB Layout	5
1.9 Component List	11

1.1 EVM Basic Functions

The ADS5421/22 evaluation module consists of 2 sections and each of the sections can be operated independently. The first section features an ac-coupled transformer input configuration, whereas the second part of the EVM implements a differential amplifier to allow for a dc-coupled front end. The configuration and layout of each of the two parts are optimized for their specific purpose.

The analog input signal is connected to the EVM via an SMA connector. Similarly, the clock is applied to a terminated SMA connector.

The digital outputs are provided in parallel form via a 32-pin connector. The output bus is buffered such that the converter is not directly driving the cable or load that is connected at the header.

Using screw-on terminals on the board makes power connections to the EVM.

1.2 Power Requirements

To provide optimal performance, the EVM is powered with independent analog, digital, and I/O supplies. The ADS5421/22 converter itself operates with a +5V analog supply and a +3.3V supply for its output driver. Both supplies are connected using terminal J2 or J201 (labeled 5V DUT, GND, 3V DUT). Also, the board requires a +5V supply for the clock circuit and a +3.3V supply for the digital output buffer (SN74x16244). Connect the corresponding supply voltage to terminal J1 or J200 (labeled Output DRV, GND, Clk). To operate the section of the EVM that includes the differential amplifier, an additional $\pm 5V$ supply must be connected to terminal J202 (labeled +5V OpAmp, GND, -5V OpAmp).

1.3 Signal Inputs

The evaluation module provides the option to evaluate the ADC with either an amplifier-based differential interface, or with a transformer-couple interface.

1.3.1 Transformer Coupled Input

The transformer is used to convert the single-ended input signal applied to SMA connector J5 into a differential signal suitable to interface to the converter. Note that the transformer model used on the EVM has a step-up voltage ratio of 1:2 (primary to secondary) and a 1:4 impedance ratio. The default setting of the converter full-scale input range is 4Vp-p. The primary side of the transformer is terminated with 50 Ω . The secondary side uses a simple RC filter (R15, R16, C34) before going into the differential inputs of the ADC. The installed values have been established to provide good performance results. However, depending on the system requirements, the component values may be adjusted for further optimization.

1.3.2 Amplifier Input

The second section of the EVM provides for a dc-coupled interface to the ADC. To implement this, the THS4503 differential amplifier is used and gain is set for 2V/V. Coming from an appropriate source, the single-ended input signal is applied to SMA connector J205. The input impedance seen by the source is approximately 50Ω. It is important to note that the source impedance must be at 50Ω as well and be of a resistive nature. This is because the differential gain of the amplifier assumes this 50Ω value and any deviation from this value will result in an additional offset term at the output of the amplifier. This in turn can cause the data from the ADC to be shifted and out-of-range. Details for configuring the gain on the differential amplifier correctly, as well as using the amplifier as an active low-pass filter (with C214 and C1218) can be found in the THS4503 product datasheet located at www.ti.com.

1.4 Input Full-Scale Range Selection

By using the V_{REF} , SEL1 and SEL2 pins, the full-scale range of the ADS5421/22 can be set to 2Vp-p, 3Vp-p, or 4Vp-p.

Table 1. Reference and Full-Scale Range Select

Desired Full-Scale Range	SEL1	SEL2	Internal V_{REF}
4Vp-p	GND	GND	2V
3Vp-p	GND	+ V_S	1.5V
2Vp-p	V_{REF}	GND	1V

NOTE: For external reference operation, tie V_{REF} to + V_S . The full-scale range will be 2x the reference value. For example, selecting a 2V external reference will set the full-scale values of 1.5V to 3.5V for both IN and \overline{IN} inputs.

Changes to the full-scale range can easily be made by reconfiguring the corresponding jumpers.

1.5 Clock

The ADS5421/22EVM requires an external clock signal applied to either SMA connector J204 or J304, depending on which section of the EVM is evaluated. Both sections feature an active clock conditioning circuit using the IC SN65LVDS101 high-speed translator. The input clock signal can be either a sine wave or a square wave signal with a minimum amplitude of 500mVp-p. The translator is configured to provide a low-jitter, low-skew differential clock output feeding into the differential clock input pins of the ADC. The clock inputs of the converter are internally biased and in order to maintain this common-mode voltage, the clock signal is ac-coupled.

1.6 Data Output

The data output of the converter is buffered by a 3.3V, low-voltage CMOS buffer (SN74ALB16244 or equivalent).

1.7 External Reference

The ADS5421/22EVM can be configured for external reference operation. To disable the internal reference, the V_{REF} pin of the converter must be tied to logic high ($V_{REF} > 3.5V$). External top- and bottom-reference voltages (REFT and REFB) can now be connected to the test points located on the EVM (REFT – TP1 or TP200, REFB – TP2 or TP201). If not already connected, the ground/return path of the reference voltages must be connected to the EVM ground to ensure proper operation.

1.8 PCB Layout

The ADS5421/22EVM is constructed on a 5-layer printed circuit board using FR-4 material. The dimension of the board is approximately 91mm (3.6inch) x 100mm (4inch).

Figure 1. Top Layer with Silkscreen

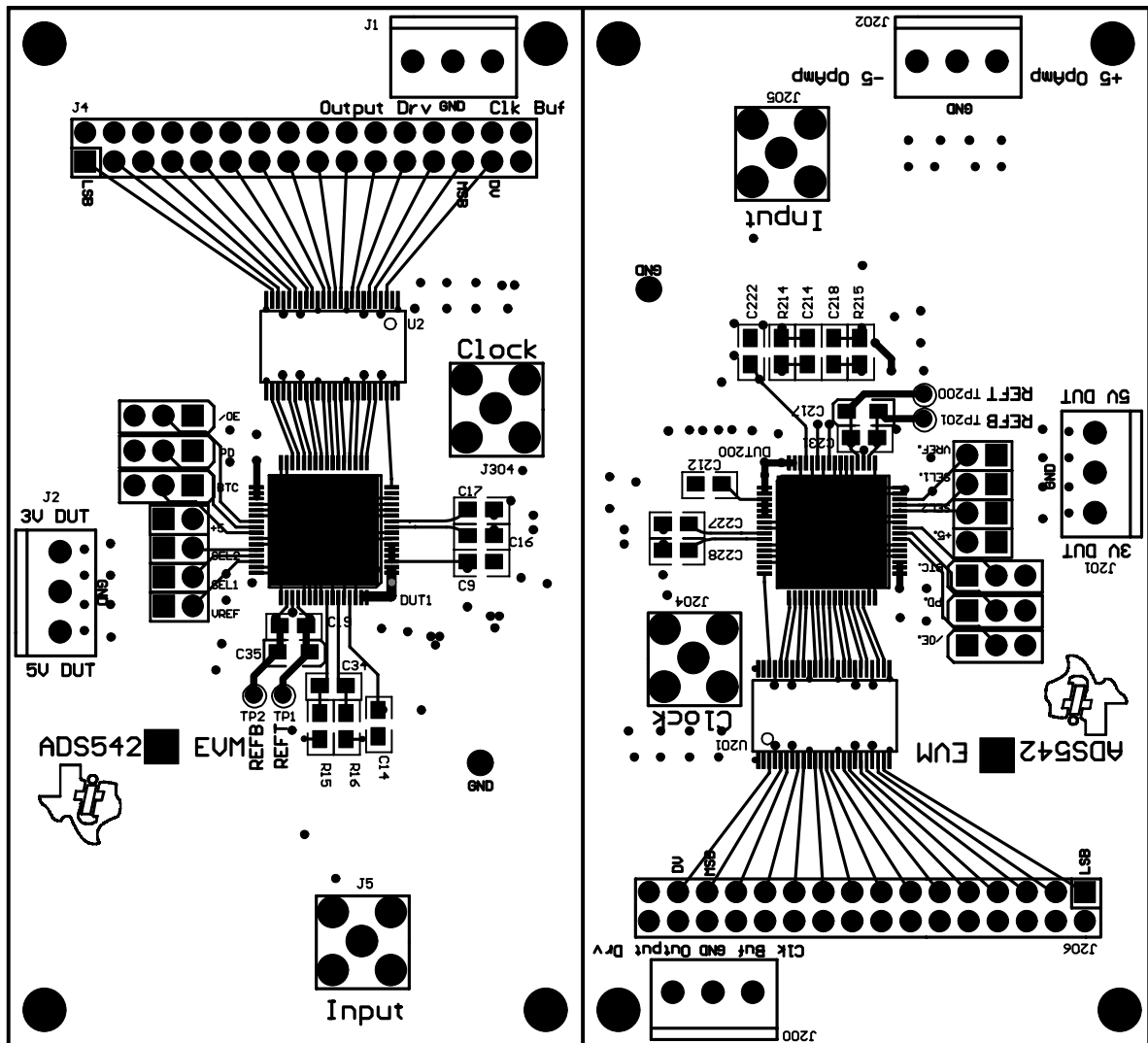


Figure 2. Ground Plane—Inner Layers 1 and 3

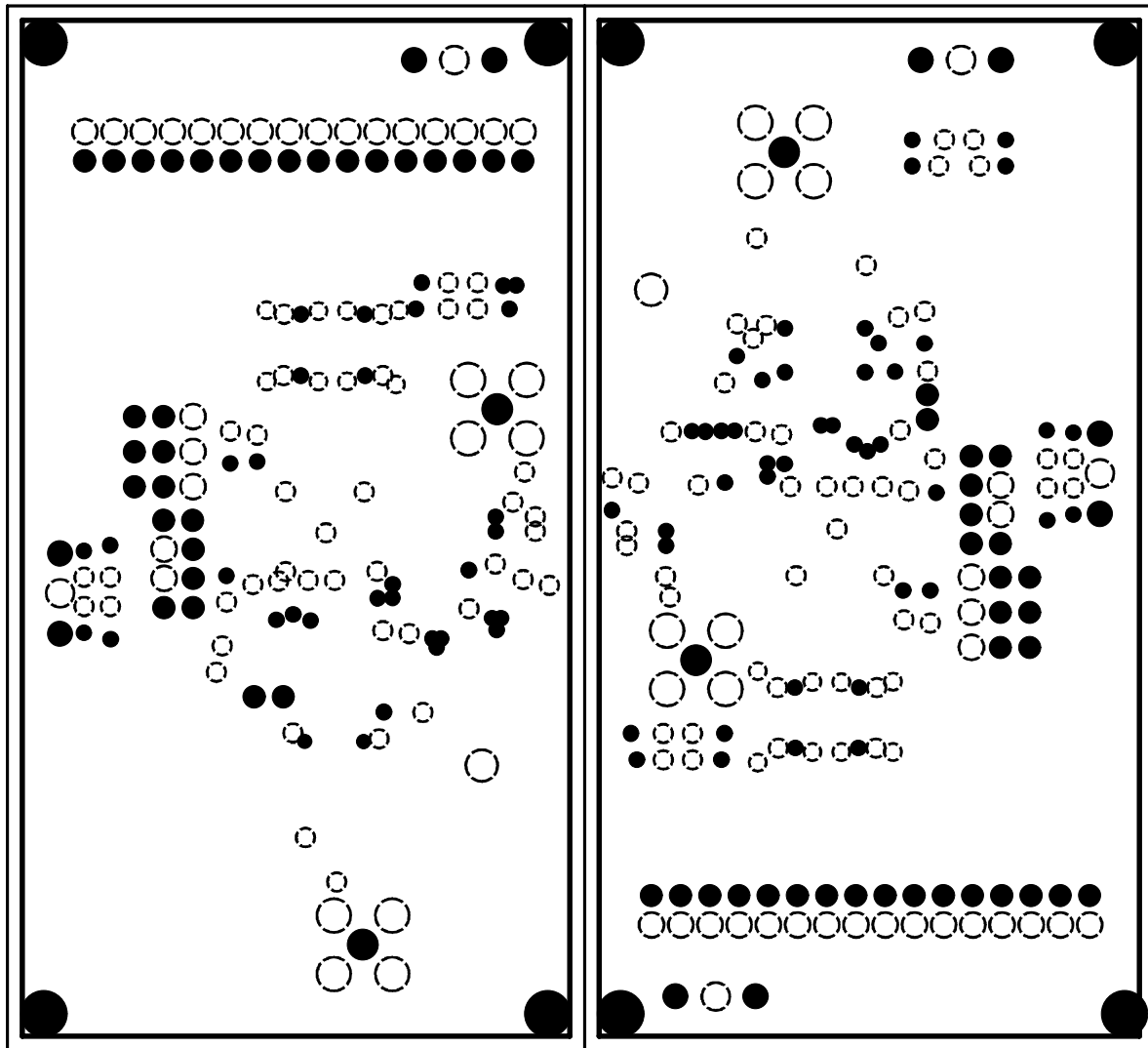


Figure 3. Power Plane—Inner Layer 2

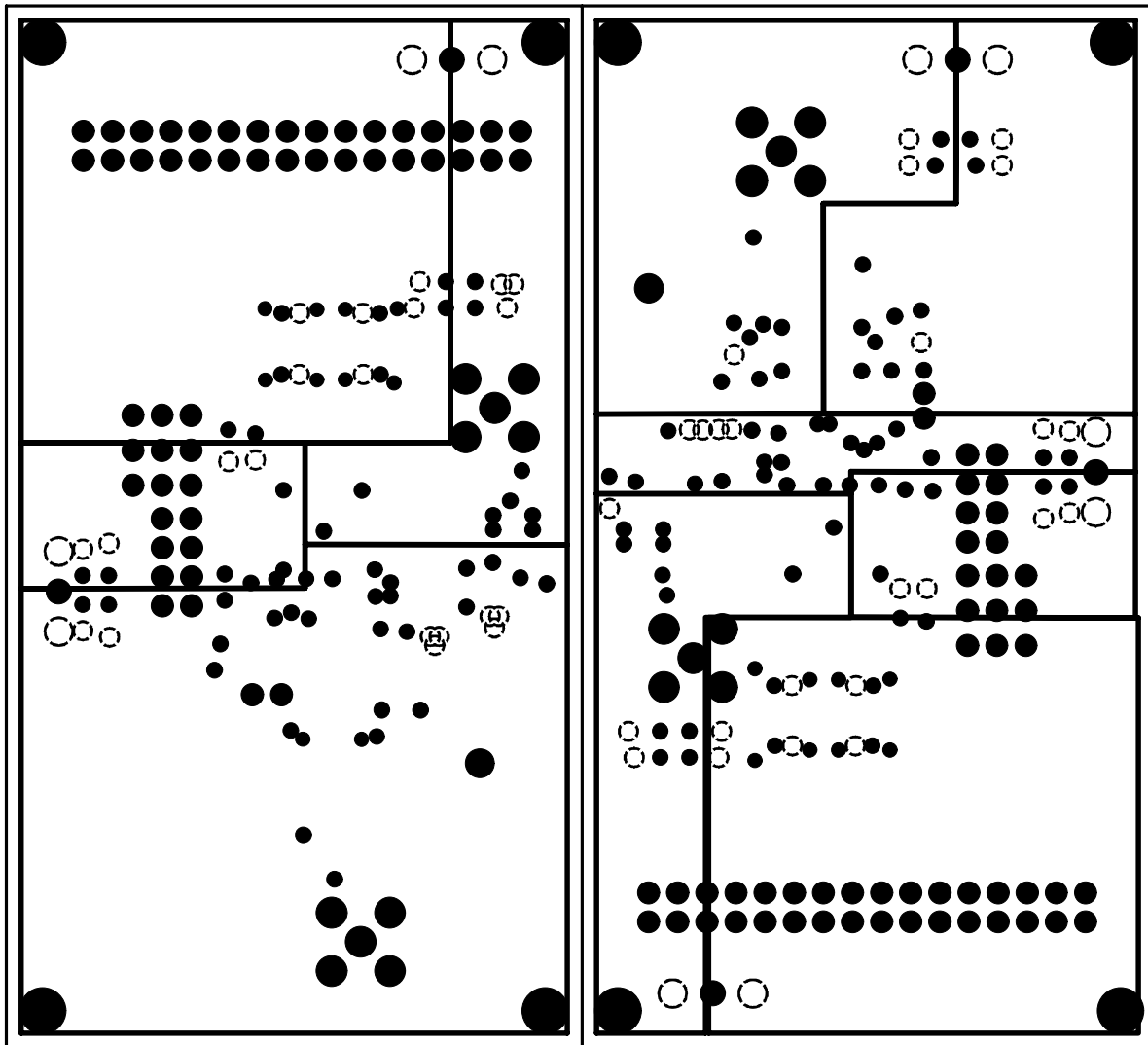


Figure 4. Bottom Layer with Silkscreen

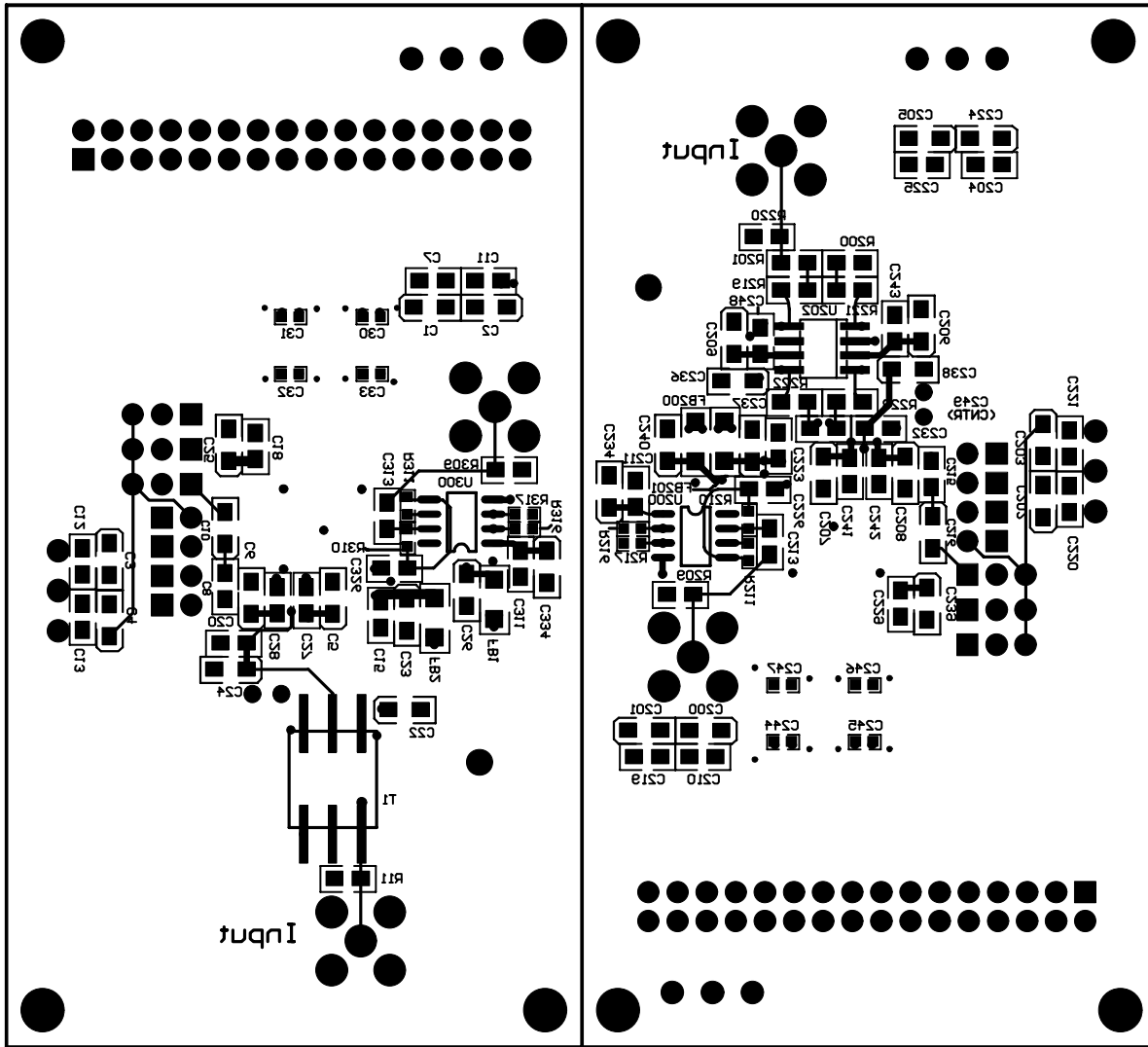


Figure 5. Schematic for Transformer-Coupled Interface

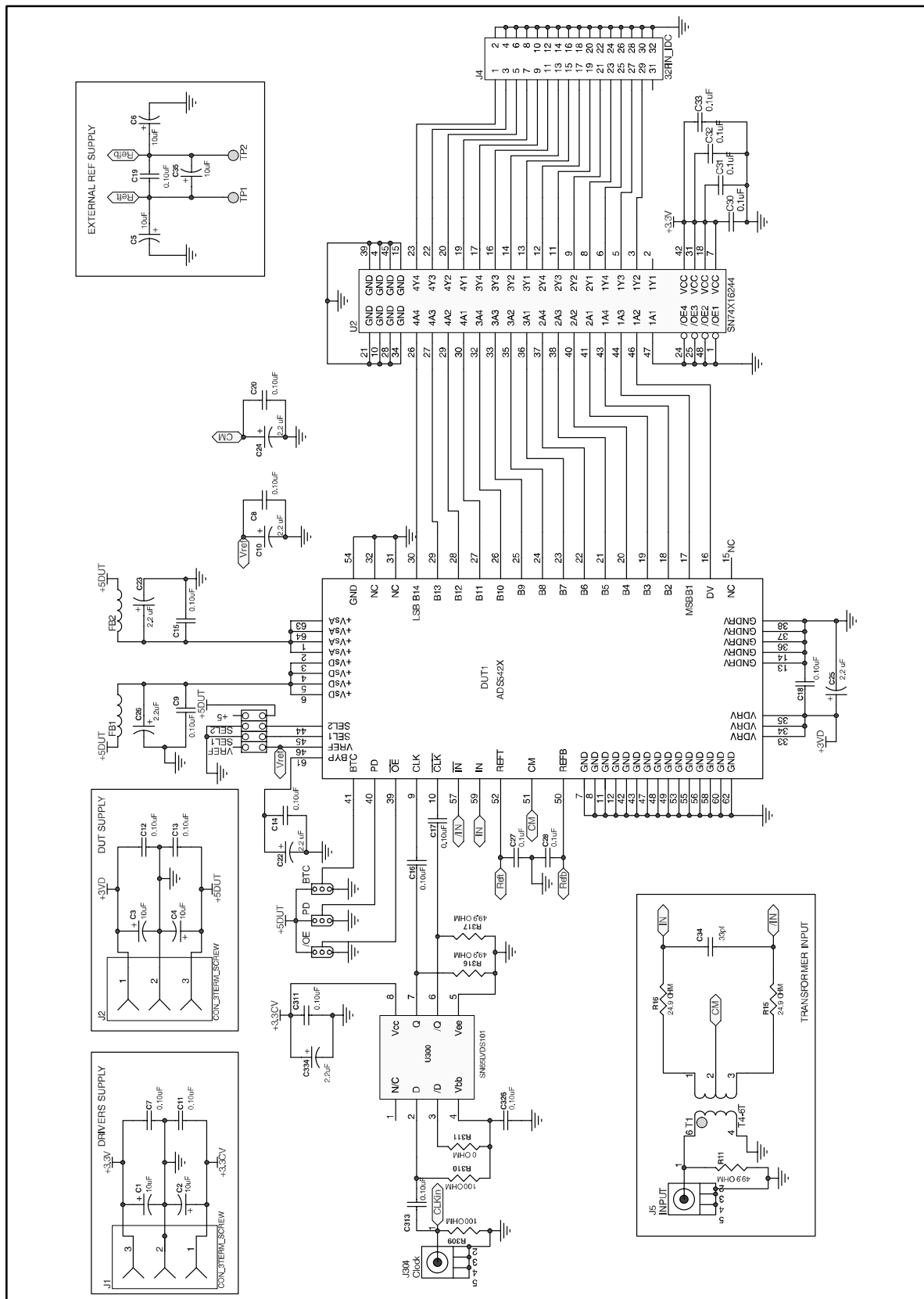
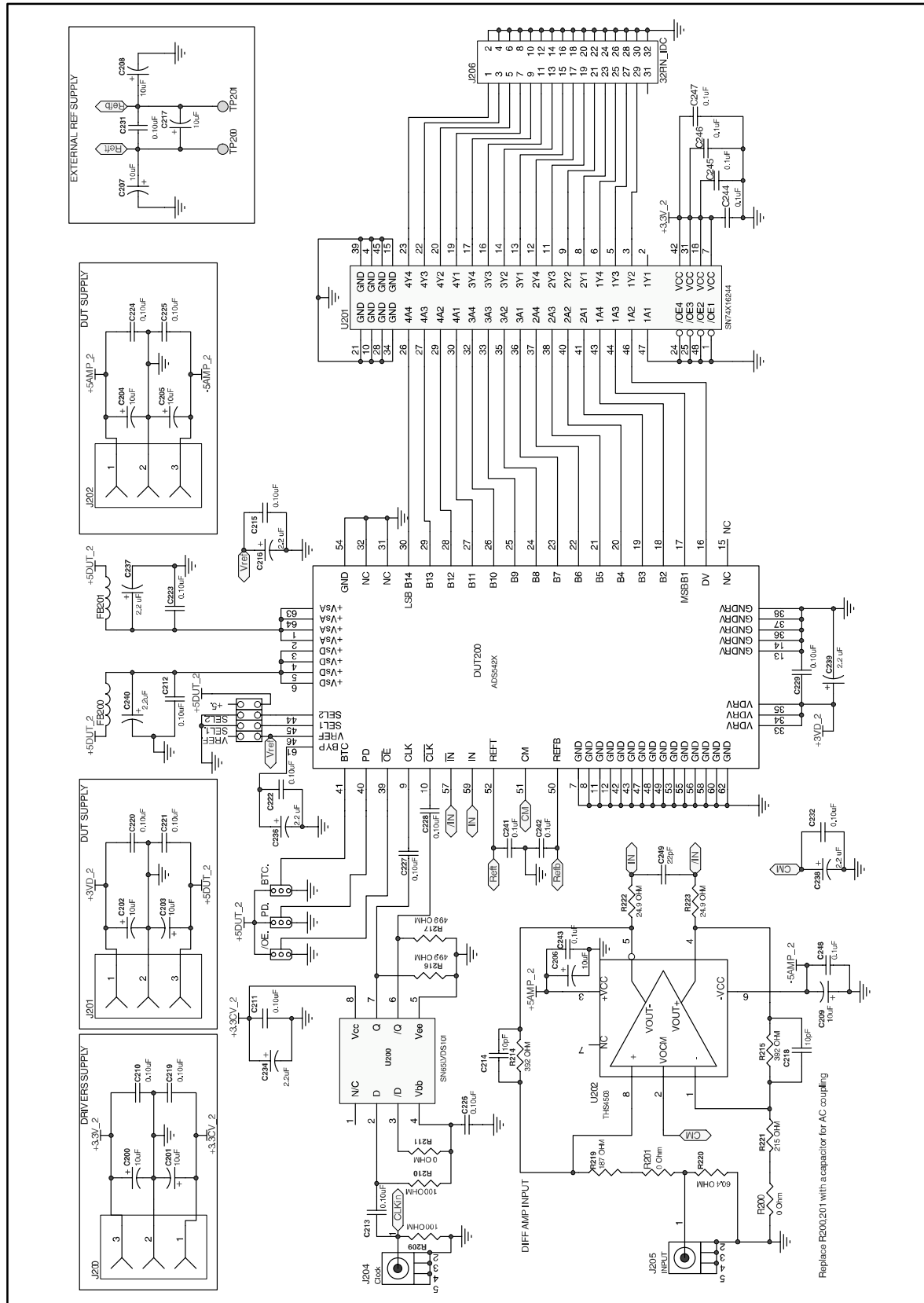


Figure 6. Schematic for Amplifier-Based Differential Interface



1.9 Component List

Table 2. Component List

Qty	Part Type	Designator	Footprint	Mfg	Part Number	Description
8	0.1 μ F	C30–C33, C244–C247	603	Digi-Key	PCC1762CT-ND	MultiLayer ceramic – variable footprint
40	0.1 μ F	C7–C9, C11–C20, C27, C28, C210, C211, C215–C232, C241–C243, C248, C311, C326	805	Digi-Key	399–1171–1–ND	MultiLayer ceramic – variable footprint
2	10pF	C214, C218, C313	805	Digi-Key	311–1099–1–ND	MultiLayer ceramic – variable footprint
2	0 Ω	R200, R201	805	Digi-Key	311–0.0ACT–ND	1/10W 0805 chip resistor
2	0 Ω	R211, R311	603	Digi-Key	P0.0GCT–ND	1/16W 5% 0603 SMD
2	100 Ω	R210, R310	603	Digi-Key	P100GCT–ND	1/16W 5% 0603 SMD
14	2.2 μ F	C10, C22–C26, C216, C234, C237–C240, C334	3216	Digi-Key	399–1586–1–ND	Low profile tantalum capacitor
8	2POS_JUMPER	SEL1, SEL1., SEL2, SEL2.	2pos_jump	Digi-Key	A26542–ND	CONN HDR 2POS 30AU STRGHT PCB
6	3POS_JUMPER	OE, OE., BTC, BTC., PD, PD.	3pos_jump	Digi-Key	A26544–ND	CONN HDR 3POS 30AU STRGHT PCB
18	10 μ F	C1–C6, C35, C200–C209, C217	3216	Digi-Key	PCS2106CT–ND	Low profile tantalum capacitor
1	22pF	C249	805	Digi-Key	311–22CCT–ND	MultiLayer ceramic – variable footprint
4	24.9 Ω	R15, R16, R222, R223	805	Digi-Key	311–24.9CCT–ND	1/10W 0805 chip resistor
2	32PIN_IDC	J4, J206	16X2X.1	Digi-Key	1–103186–6–ND	CONN HDR 32POS STRGHT PCB
1	33pF	C34	805	Digi-Key	399–1115–1–ND	Multilayer ceramic – 0805 Size
4	49.9 Ω	R216, R217, R316, R317	603	Digi-Key	P49.9CCT–ND	1/10W 0603 chip resistor
3	49.9 Ω	R11	805	Digi-Key	RR12Q49.9DCT–ND	1/10W 0805 chip resistor
1	60.4 Ω	R220	805	Digi-Key	P60.4CCT–ND	1/10W 0805 chip resistor
2	100 Ω	R209, R309	805	Digi-Key	P100CCT–ND	1/10W 0805 chip resistor
1	187 Ω	R219	805	Digi-Key	P187CCT–ND	1/10W 0805 chip resistor
1	215 Ω	R221	805	Digi-Key	P215CCT–ND	1/10W 0805 chip resistor
2	392 Ω	R214, R215	805	Digi-Key	P392CCT–ND	1/10W 0805 chip resistor
2	ADS542X	DUT1, DUT200	PQFP-64 (PM)	TI	ADS5421/ADS5422	ADS5421/ADS5422 (as required)
5	CON_3TERM_SCREW	J1, J2, J200–J202	3P-TERM	Digi-Key	ED–1515–ND	3-terminal screw connector
4	SMA_JACK	J5, J204, J205, J304	SMA_JACK	Johnson	142–0701–231	SMA_JACK_STRAIGHT
4	FERRITE	FB1, FB2, FB200, FB201	1206	Digi-Key	P10437CT–ND	Ferrite Bead
2	SN65LVDS101	U200, U300	SO-8	TI	SN65LVDS101	Differential translator, repeater
2	SN74ALVCH16244	U2, U201	TSSOP-48 (DGG)	TI	SN74ALVCH16244	16-bit buffer, tri-state
1	T4–6T	T1	TTWB	MiniCircuits	T4–6T	Transformer
1	THS4502	U202	SO-8 (D)	TI	THS4502	Op amp