



**ANATECH ELECTRONICS INC**  
RF & Microwave Filters & Products

## 265.6 MHz LC Bandpass Filter

Part Number: AE265.6B4604



### Electrical Specifications

**Center Frequency:** 265.6 MHz  
**Bandwidth:** 93.29 MHz  
**Passband :** 223.1 MHz to 316.3 MHz  
**Insertion Loss:** <4.0dB  
**Rejection:** >40dB @ 188.6 MHz  
**Rejection:** >40dB @ 374.1 MHz  
**Impedance:** 50 Ohms

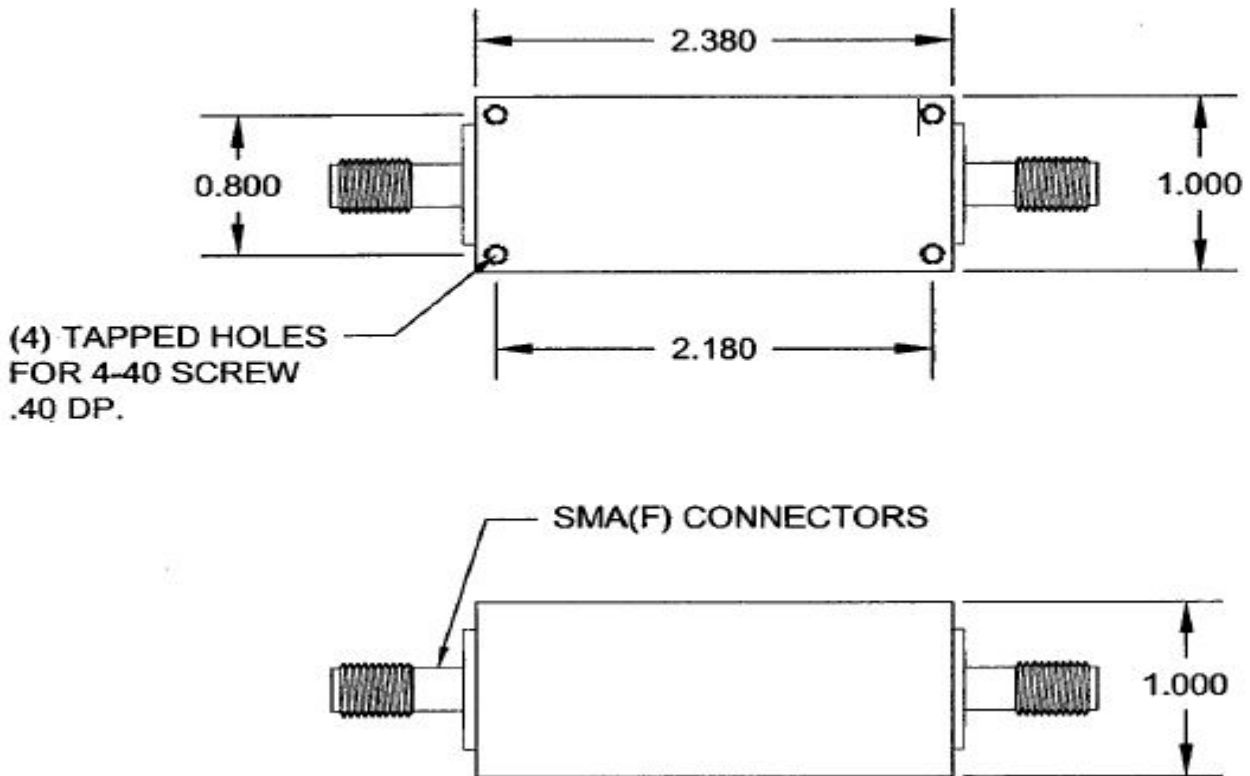
### Mechanical

**Connector Type:** SMA(F)  
**Dimensions:** 2.38" x 1.0" x 1.0" in.

### Environmental

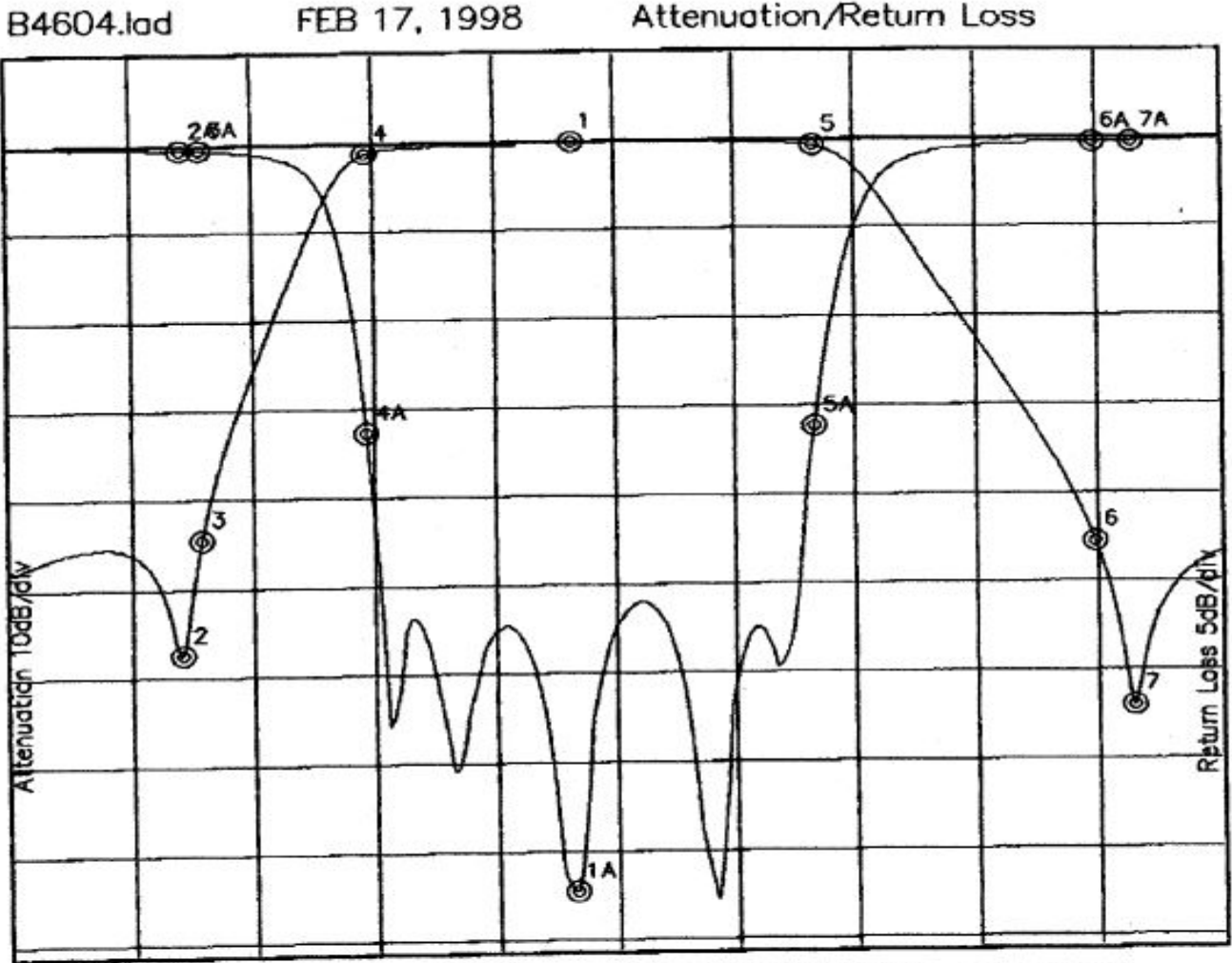
**Operating Temperature:** -25°C to +70°C  
**Storage Temperature:** -40°C to +90°C  
**Shock:** 10 G. 11ms  
**Vibration:** 10 G. 5 to 200Hz

### Outline Drawing:





**Response Plot:**



Attenuation Start: 150.0MHz    Stop: 400.0MHz

Return Loss Start: 150.0MHz    Stop: 400.0MHz

Offset -0.6521dB

- Marker 1 Freq 265.91MHz Atten -0.053dB
- Marker 2 Freq 184.73MHz Atten -57.226dB
- Marker 3 Freq 188.77MHz Atten -44.451dB
- Marker 4 Freq 223.10MHz Atten -1.168dB
- Marker 5 Freq 316.39MHz Atten -0.681dB
- Marker 6 Freq 374.15MHz Atten -45.247dB
- Marker 7 Freq 382.22MHz Atten -63.699dB

- Marker 1A Freq 265.91MHz Ret Loss -42.032dB
- Marker 2A Freq 184.73MHz Ret Loss -0.216dB
- Marker 3A Freq 188.77MHz Ret Loss -0.259dB
- Marker 4A Freq 223.10MHz Ret Loss -16.351dB
- Marker 5A Freq 316.39MHz Ret Loss -16.085dB
- Marker 6A Freq 374.15MHz Ret Loss -0.193dB
- Marker 7A Freq 382.22MHz Ret Loss -0.163dB