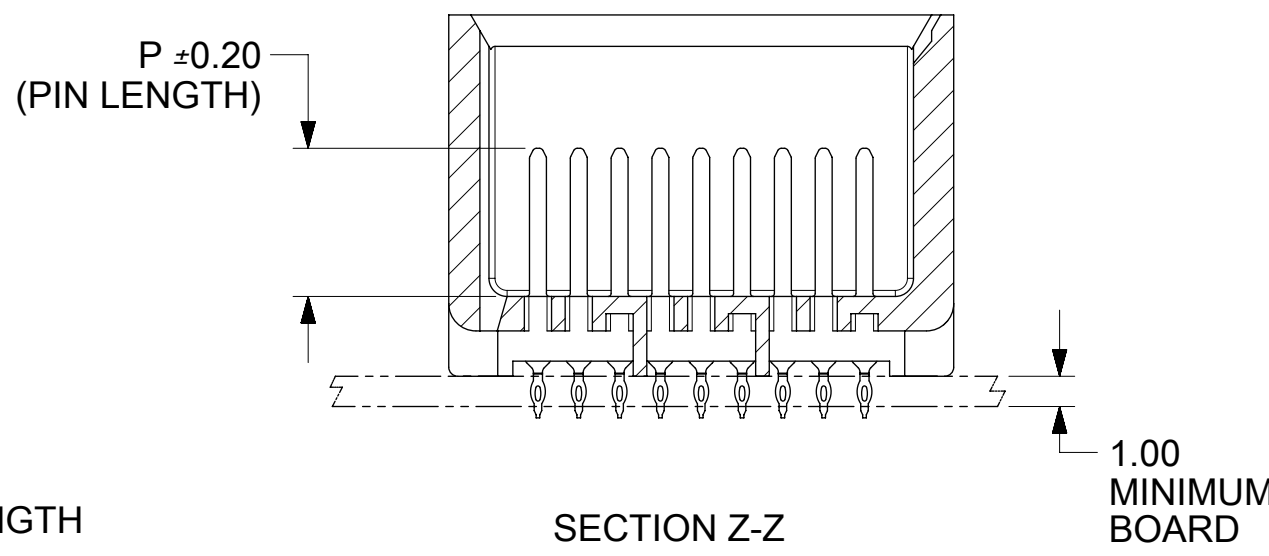
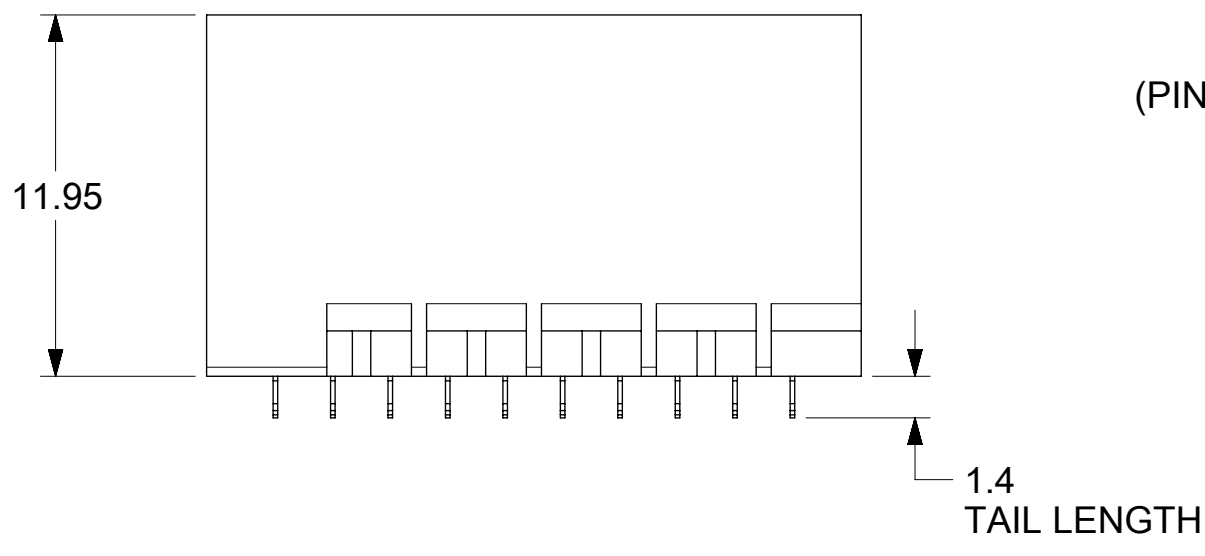
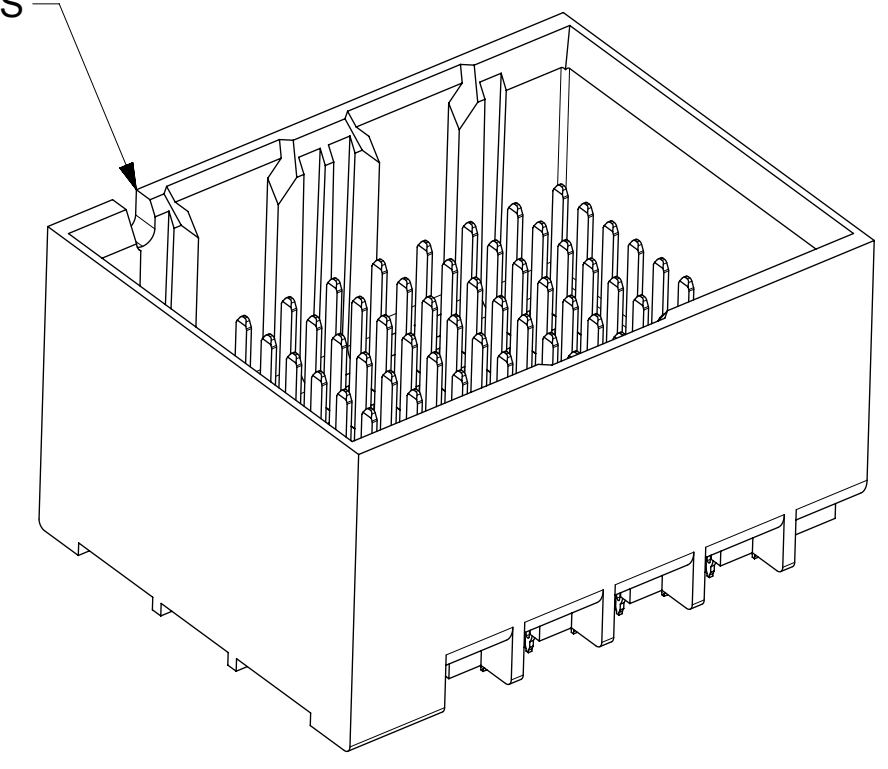


SEE PART NUMBER CHART AND PART NUMBER LOGIC (9 HOLES PER COLUMN)

UNGUIDED BACKPLANE HOLE PATTERN (CONNECTOR SIDE) SEE NOTE 9



NOTCH DESIGNATES ROW A



- NOTES:**
1. MATERIALS: HOUSING - LIQUID CRYSTAL POLYMER (LCP) GLASS-FILLED, UL94V-0  
TERMINALS - HIGH PERFORMANCE COPPER ALLOY
  2. FINISH: 10 μINCH MIN GOLD IN CONTACT AREA.  
SELECTIVE MATE TIN ON PCB TAILS, NICKEL OVERALL.
  3. REFER TO MOLEX PRODUCT SPECIFICATION PS-76060-999 FOR PERFORMANCE SPECIFICATIONS AND ADDITIONAL PCB INFORMATION.
  4. THIS PART CONFORMS TO CLASS B REQUIREMENTS OF MOLEX COSMETIC SPEC PS-45499-002.
  5. PARTS PACKAGED PER PK-70873-7700.
  6. SEE SHEETS 2 & 3 FOR PART NUMBERS AND BOARD RELATIONSHIPS.
  7. MATES WITH IMPACT DC SERIES NO. 76170.
  8. REFER TO MOLEX PCB ROUTING GUIDE AS-76060-990 FOR ANTIPAD AND ROUTING RECOMMENDATIONS.
  9. "THESE DIMENSIONS REPRESENT THE AREA NEEDED TO ACCOMMODATE CONNECTOR INSERTION AND REPAIR ON THE PC BOARD. THIS IS REFERRED TO AS THE "CONNECTOR KEEP OUT ZONE" AND DOES NOT REPRESENT THE ACTUAL PERIMETER OF THE CONNECTOR. WHEN LAYING OUT A PC BOARD FOR CONNECTORS STACKED TOGETHER. USE A 1.9mm PROGRESSION."

QUALITY SYMBOLS ▽ = 0 ▽ = 0 ▽ = 0 ▼ = 0 ▽ = 0 ⊠ = 0 ■ = 0 ▽ = 0	THIS DRAWING CONTAINS INFORMATION THAT IS PROPRIETARY TO MOLEX ELECTRONIC TECHNOLOGIES, LLC AND SHOULD NOT BE USED WITHOUT WRITTEN PERMISSION		GENERAL TOLERANCES (UNLESS SPECIFIED) ANGULAR TOL ± 0.5 °		DIMENSION UNITS: mm SCALE: 4:1	
	DRWN BY: JBINGHAM DATE: 2011/11/16	CHKD BY: JLAURX DATE: 2011/11/16	APPR BY: JLAURX DATE: 2011/12/02	DRAWING SIZE: C THIRD ANGLE PROJECTION	SERIES: 171292 MATERIAL NUMBER: SEE CHART CUSTOMER: GENERAL MARKET	
EC NO: 123283 DRWN: KUCHILA CHKD: KUCHILA APPR: PRAMASWAMY		MIGRATED TO NX 2017/10/13 2017/10/13	DRAFT WHERE APPLICABLE MUST REMAIN WITHIN DIMENSIONS		DOCUMENT NUMBER: SD-171292-0001 DOC TYPE: PSD DOC PART: 001 SHEET NUMBER: 1 OF 3	PRODUCT CUSTOMER DRAWING

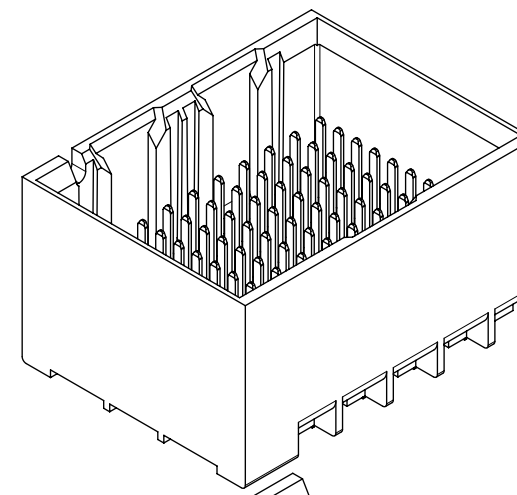
# PART NUMBER CHART

MATERIAL NUMBER	# OF COLUMNS	# OF DIFF PAIR	DIM "A"	DIM "B"	DUAL END WALL OPTION
171292-132*	6	18	14.1	9.50	
171292-182*	8	24	17.9	13.30	
171292-112*	10	30	21.7	17.10	
171292-162*	16	48	33.1	28.50	

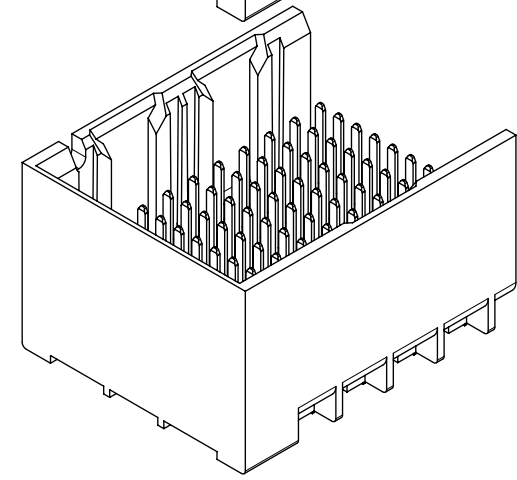
MATERIAL NUMBER	# OF COLUMNS	# OF DIFF PAIR	DIM "A"	DIM "B"	LEFT END WALL OPTION
171292-181*	8	24	16.5	13.30	
171292-111*	10	30	20.3	17.10	
171292-161*	16	48	31.7	28.50	

MATERIAL NUMBER	# OF COLUMNS	# OF DIFF PAIR	DIM "A"	DIM "B"	RIGHT END WALL OPTION
171292-183*	8	24	16.5	13.30	
171292-113*	10	30	20.3	17.10	
171292-163*	16	48	31.7	28.50	

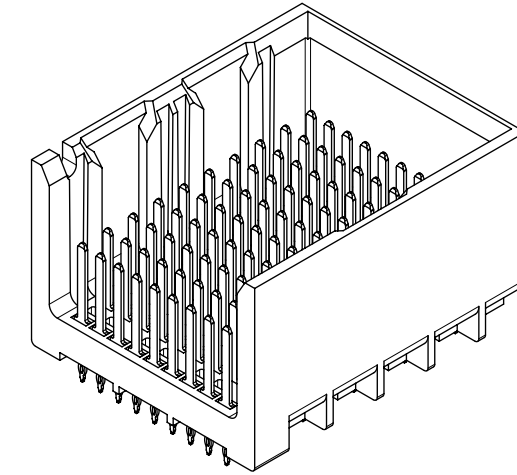
MATERIAL NUMBER	# OF COLUMNS	# OF DIFF PAIR	DIM "A"	DIM "B"	OPEN WALL OPTION
171292-180*	8	24	15.1	13.30	
171292-110*	10	30	18.9	17.10	
171292-160*	18	48	30.4	28.50	



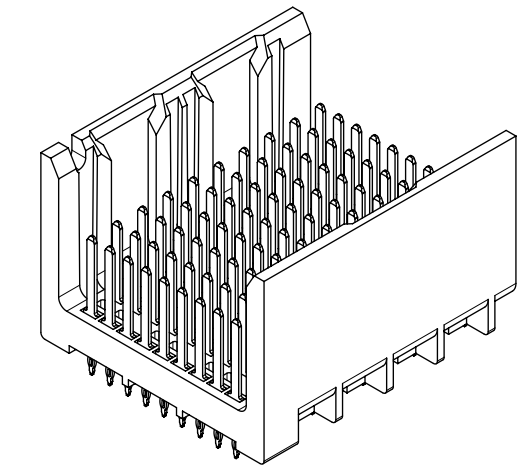
DUAL END  
WALL OPTION



LEFT END  
WALL OPTION



RIGHT END  
WALL OPTION



OPEN  
WALL OPTION

# PART NUMBER LOGIC

171292- \* \* \* \*

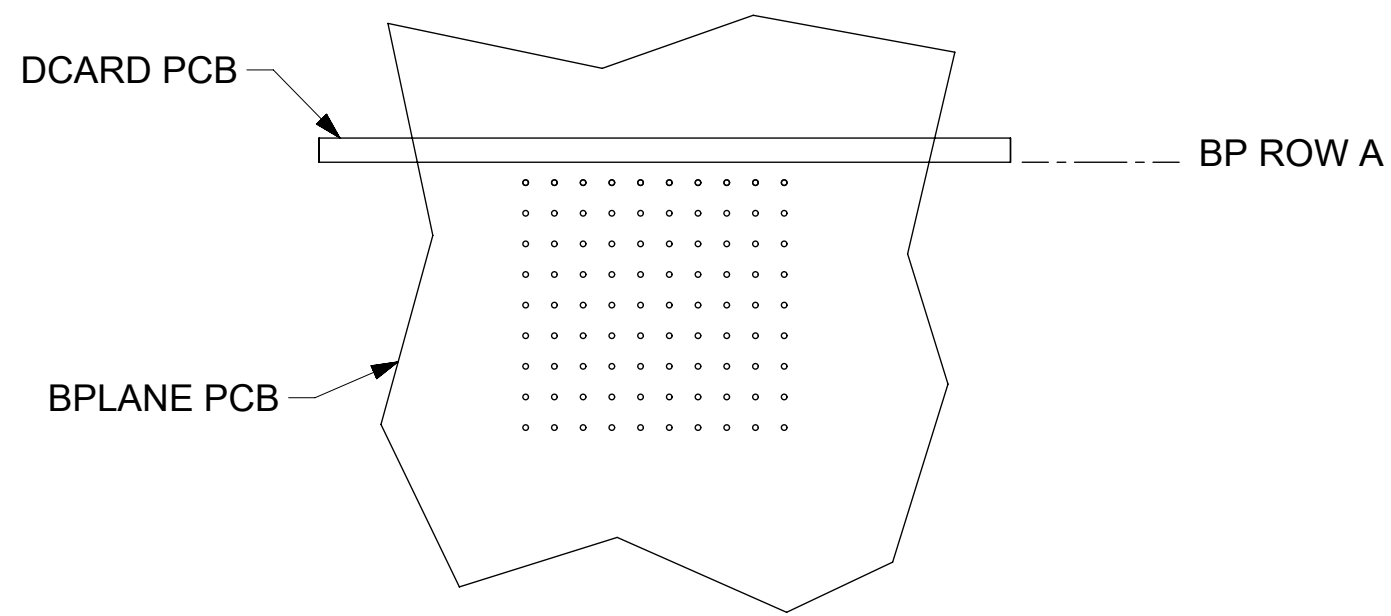
MODULE TYPE  
1 = UNGUIDED, MATTE TIN

# OF COLUMNS  
1 = 10 COL  
3 = 6 COL  
6 = 16 COL  
8 = 8 COL

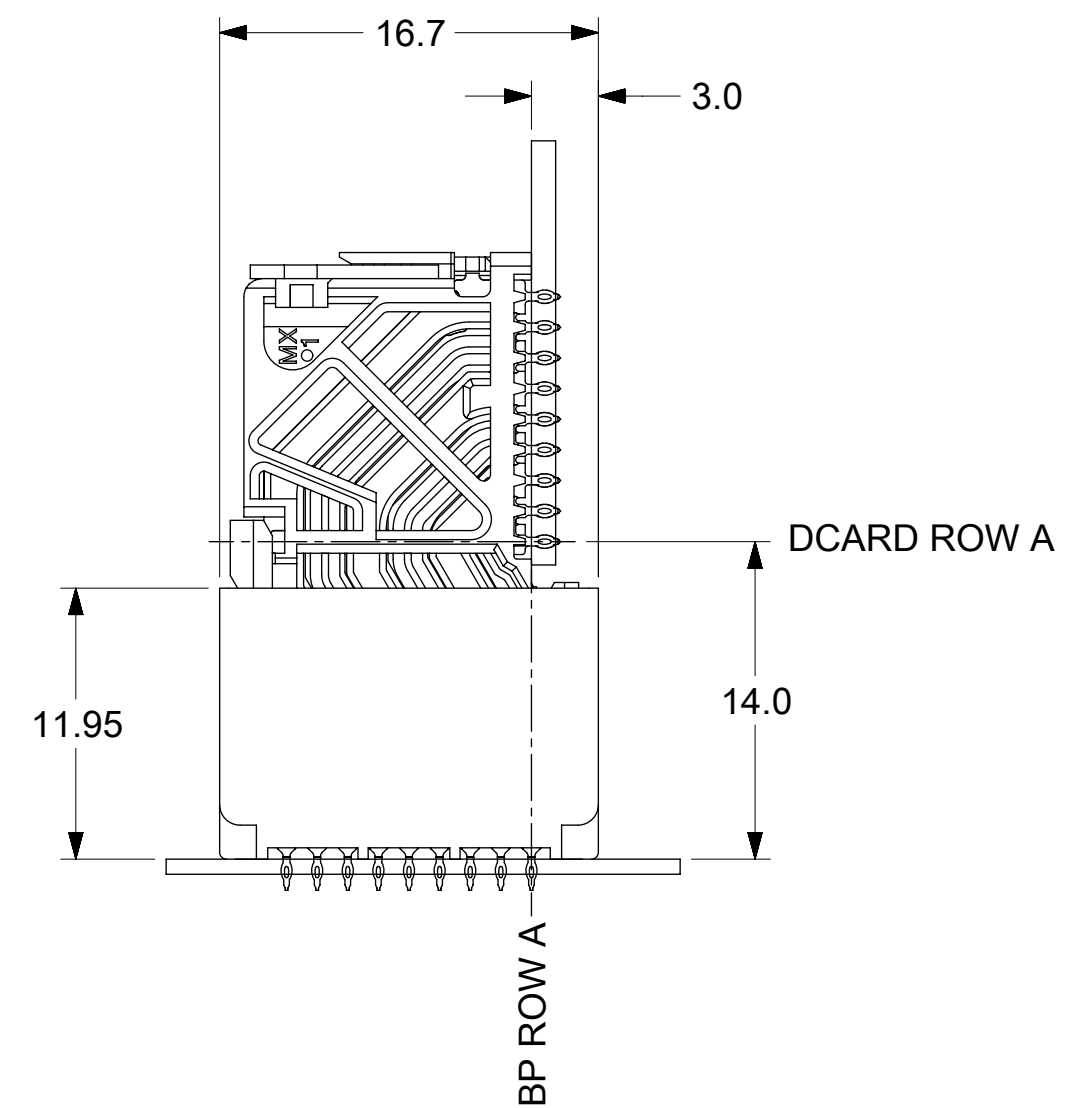
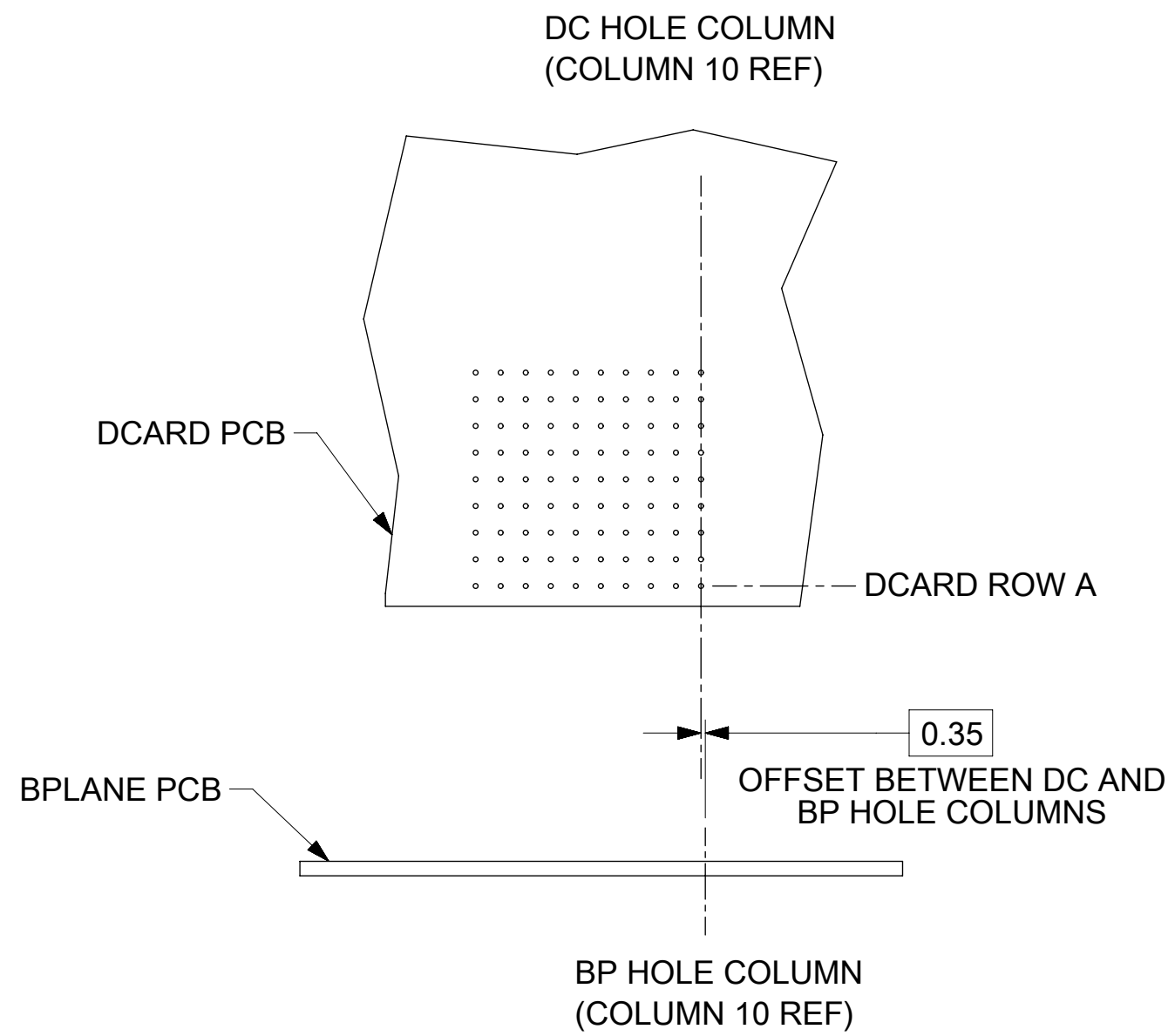
PIN LENGTH (P)  
3 = 4.50 (SHORT COMPLIANT, 0.46±0.05 PTH)  
4 = 4.90 (SHORT COMPLIANT, 0.46±0.05 PTH)  
5 = 5.50 (SHORT COMPLIANT, 0.46±0.05 PTH)  
6 = 4.50 (MICRO COMPLIANT, 0.39±0.05 PTH)  
7 = 4.90 (MICRO COMPLIANT, 0.39±0.05 PTH)  
8 = 5.50 (MICRO COMPLIANT, 0.39±0.05 PTH)

END WALL OPTIONS  
0 = OPEN ENDS  
1 = LEFT END WALL  
2 = DUAL END WALL  
3 = RIGHT END WALL

QUALITY SYMBOLS	THIS DRAWING CONTAINS INFORMATION THAT IS PROPRIETARY TO MOLEX ELECTRONIC TECHNOLOGIES, LLC AND SHOULD NOT BE USED WITHOUT WRITTEN PERMISSION									
▽ = 0	EC NO: 123283 DRWN: KUCHILA CHKD: KUCHILA APPR: PRAMASWAMY MIGRATED TO NX 2017/10/13 2017/10/13 2017/10/18	GENERAL TOLERANCES (UNLESS SPECIFIED)		DIMENSION UNITS	SCALE					
▽ = 0		ANGULAR TOL ± 0.5 °		mm	2.5:1					
▽ = 0		4 PLACES ±		DRWN BY	DATE	IMPACT 3 PAIR BACKPLANE UNGUIDED ASSEMBLY SALES DRAWING				
▽ = 0		3 PLACES ±		JBINGHAM	2011/11/16					
▽ = 0		2 PLACES ± 0.13		CHKD BY	DATE	PRODUCT CUSTOMER DRAWING				
▽ = 0		1 PLACE ± 0.25		JLAURX	2011/11/16					
▽ = 0		0 PLACES ±		APPR BY	DATE	SERIES MATERIAL NUMBER CUSTOMER 171292 SEE CHART GENERAL MARKET				
▽ = 0		DRAFT WHERE APPLICABLE MUST REMAIN WITHIN DIMENSIONS		JLAURX	2011/12/02					
▽ = 0		A2		DRAWING SIZE	THIRD ANGLE PROJECTION	DOCUMENT NUMBER DOC TYPE DOC PART SHEET NUMBER SD-171292-0001 PSD 001 2 OF 3				
▽ = 0		C		C						



**IMPACT 3 PAIR  
BOARD RELATIONSHIPS**



QUALITY SYMBOLS		THIS DRAWING CONTAINS INFORMATION THAT IS PROPRIETARY TO MOLEX ELECTRONIC TECHNOLOGIES, LLC AND SHOULD NOT BE USED WITHOUT WRITTEN PERMISSION									
▽ = 0	▽ = 0	MIGRATED TO NX EC NO: 123283 DRWN: KUCHILA CHKD: KUCHILA REV APPR: PRAMASWAMY	GENERAL TOLERANCES (UNLESS SPECIFIED)			DIMENSION UNITS	SCALE	<b>molex</b>			
▽ = 0	▽ = 0		ANGULAR TOL ± 0.5 °			mm	1:1				
▽ = 0	▽ = 0		4 PLACES ±			DRWN BY	DATE	IMPACT 3 PAIR BACKPLANE UNGUIDED ASSEMBLY SALES DRAWING			
▽ = 0	▽ = 0		3 PLACES ±			JBINGHAM	2011/11/16				
▽ = 0	▽ = 0		2 PLACES ± 0.13			CHKD BY	DATE	PRODUCT CUSTOMER DRAWING			
▽ = 0	▽ = 0		1 PLACE ± 0.25			JLAURX	2011/11/16				
▽ = 0	▽ = 0	0 PLACES ±			APPR BY	DATE	SERIES	MATERIAL NUMBER	CUSTOMER		
□ = 0	■ = 0	DRAFT WHERE APPLICABLE MUST REMAIN WITHIN DIMENSIONS			JLAURX	2011/12/02	171292	SEE CHART	GENERAL MARKET		
▽ = 0		DRAWING SIZE	THIRD ANGLE PROJECTION		C			DOCUMENT NUMBER	DOC TYPE	DOC PART	SHEET NUMBER
		A2					SD-171292-0001	PSD	001		3 OF 3