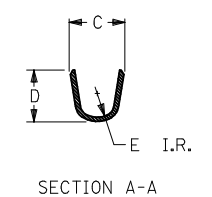
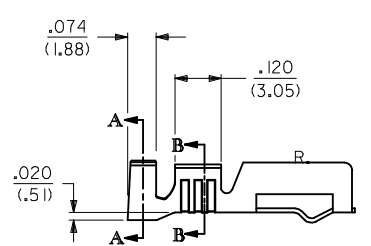
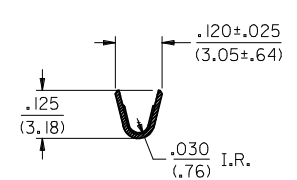


NOTES:

1. THESE TERMINALS ARE FOR USE WITH THE 1461-* SERIES HOUSINGS.
- THE -1* GROUP CRIMPS #18 TO #22 AWG WIRE WITH INSULATION DIAMETERS OF .061/(1.55) TO .102/(2.59).
- THE -2* GROUP CRIMPS #14 TO #16 AWG WIRE WITH AN INSULATION DIAMETER OF .140/(3.56) MAX.
- ⚠ THESE TERMINALS ARE PRODUCED ONLY FOR EXPORT TO JAPAN.
3. CARRIER CUT OFF DIMENSION: .007/(.18) MAX.
4. PRODUCT SPECIFICATION PS 50-36 APPLIES.



SECTION A-A

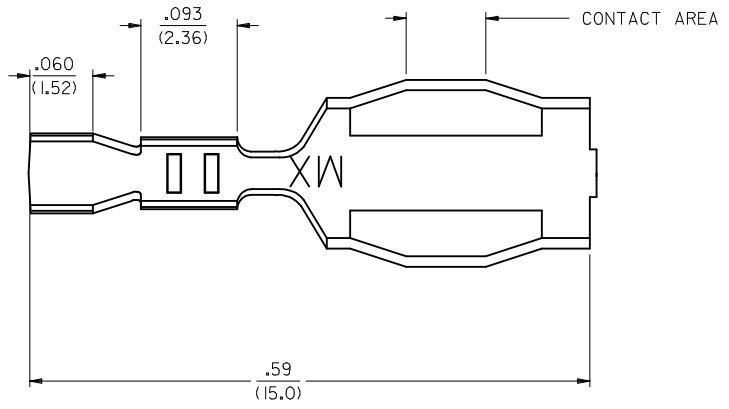


SECTION B-B

MATERIAL:
260 BRASS

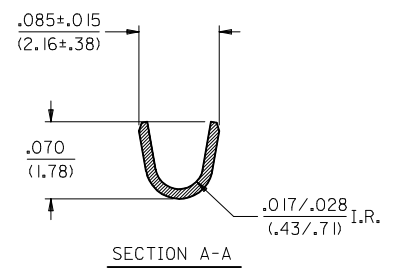
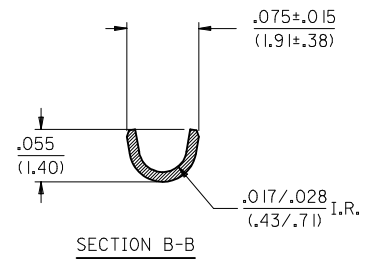
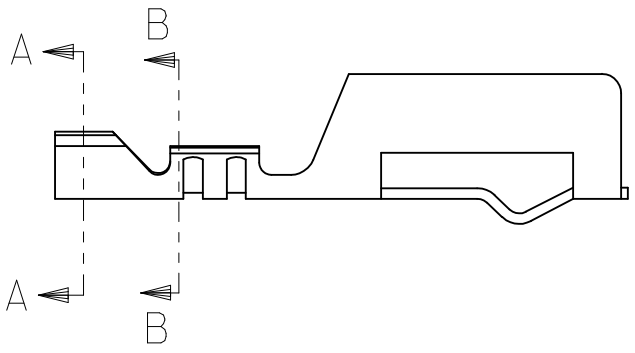
PART NO.	ENG. NO.	DIM. C	DIM. D	DIM. E	FORM	PLATING PER SDES-
05-02-0047	1457-1	.145±.025 (3.68±.64)	.135 (3.43)	.045 (1.14)	CHAIN	88-P901 TIN
05-02-0049	1457-2	.21±.03 (5.3±.8)	.185±.015 (4.70±.38)	.060 (1.52)	CHAIN	88-P901 TIN

REMOVE UNSOLD P/NS EC NO: UCP2017-0023 DRWN: SCHAER 2016/07/06 CHKD: APPR: FSMITH 2016/08/12	QUALITY SYMBOLS	GENERAL TOLERANCES (UNLESS SPECIFIED)	DIMENSION STYLE	SCALE	DESIGN UNITS	THIRD ANGLE PROJECTION
	▽=0	mm INCH	IN/MM	4:1	INCH	
	▽=0	4 PLACES ± --- ± ---	DRAWN BY DATE	TITLE	TERMINAL, COMMONING CRIMP	
	▽=0	3 PLACES ± --- ± .010	CD 2011/07/26			
	2 PLACES ± .25 ± .014	CHECKED BY DATE	molex DOCUMENT NO. SD-1457-* SHEET NO. 1 OF 2			
	1 PLACE ± .35 ± ---	RHR 1991/11/02				
	0 PLACE ± ±	APPROVED BY DATE	THIS DRAWING CONTAINS INFORMATION THAT IS PROPRIETARY TO MOLEX INCORPORATED AND SHOULD NOT BE USED WITHOUT WRITTEN PERMISSION			
		FSMITH 2016/08/12				
		ANGULAR ±1/2°	SEE CHART			
		DRAFT WHERE APPLICABLE MUST REMAIN WITHIN DIMENSIONS				



- NOTES:
1. FOR ALL OTHER DIMENSIONS SEE SHEET 1.
 2. THE -6* GROUP CRIMPS #24 TO #30 AWG WIRE WITH AN INSULATION DIAMETER OF .050/(1.27)

5/64 ^C



PART NO.	ENG. NO.	FORM	PLATING
05-02-0091	1457-6	CHAIN	TIN PER SDES-88

SEE SHEET 1 EC NO: UCP2017-0023 DRWN: J.SCHAFFER 2016/07/06 CHKD: APPR: FSMITH 2016/08/12	QUALITY SYMBOLS	GENERAL TOLERANCES (UNLESS SPECIFIED)	DIMENSION STYLE	SCALE	DESIGN UNITS	THIRD ANGLE PROJECTION
	= 0	mm INCH	IN/MM	4:1	INCH	
	= 0	4 PLACES ± --- ± ---	DRAWN BY DATE	TITLE		
	= 0	3 PLACES ± --- ± .010	CHECKED BY DATE	TERMINAL, COMMONING CRIMP		
	= 0	2 PLACES ± .25 ± .014	RHR 1991/11/02			
	1 PLACE ± .35 ± ---	APPROVED BY DATE	MATERIAL NO. DOCUMENT NO. SHEET NO. SEE CHART SD-1457-* 2 OF 2			
	0 PLACE ± ±	FSMITH 2016/08/12	THIS DRAWING CONTAINS INFORMATION THAT IS PROPRIETARY TO MOLEX INCORPORATED AND SHOULD NOT BE USED WITHOUT WRITTEN PERMISSION			
		ANGULAR ±1/2°				
		DRAFT WHERE APPLICABLE MUST REMAIN WITHIN DIMENSIONS				