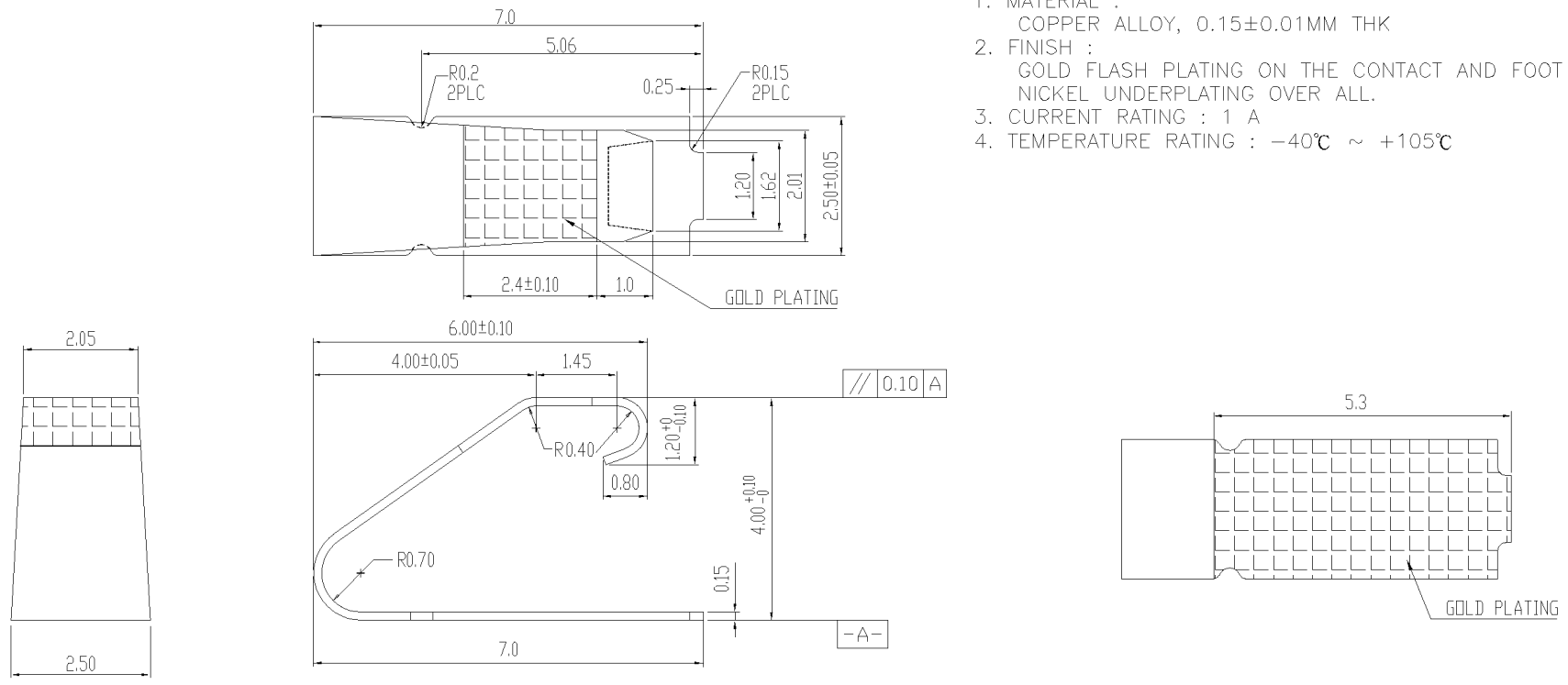


THIS DRAWING IS UNPUBLISHED. RELEASED FOR PUBLICATION
 © COPYRIGHT 2011 BY TYCO ELECTRONICS CORPORATION. ALL RIGHTS RESERVED.

LOC		DIST		REVISIONS				
DW		P	LTR	DESCRIPTION	DATE	DWN	APVD	
		B2		REVISED (ECR-11-006482)	29MAR11	JL	WK	

- NOTES :
- ROHS 2002/95/EC COMPLIANT
 - 1. MATERIAL :
COPPER ALLOY, 0.15±0.01MM THK
 - 2. FINISH :
GOLD FLASH PLATING ON THE CONTACT AND FOOT AREA
NICKEL UNDERPLATING OVER ALL.
 - 3. CURRENT RATING : 1 A
 - 4. TEMPERATURE RATING : -40°C ~ +105°C

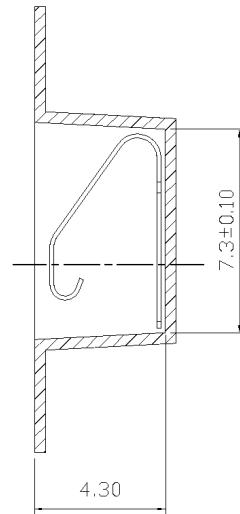
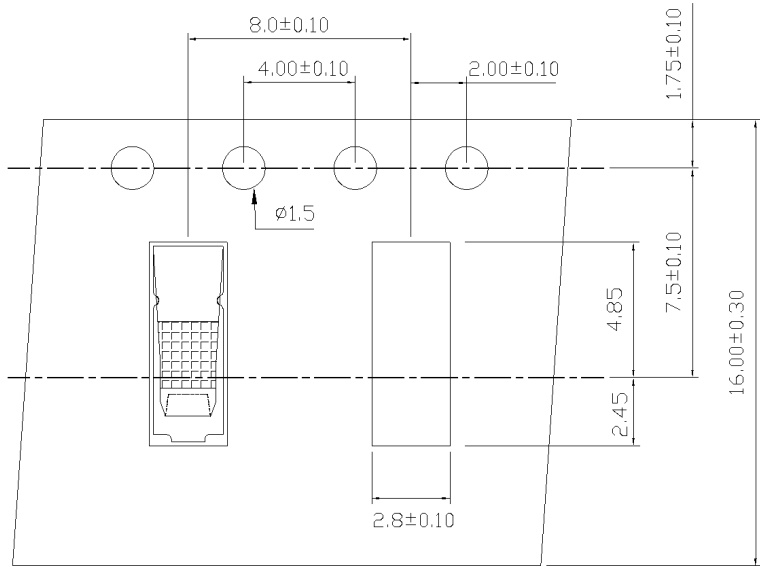


OBSOLETE	-440422-2	Ti-Cu
	440422-1	Be-Cu
	PART NUMBER	MATERIAL

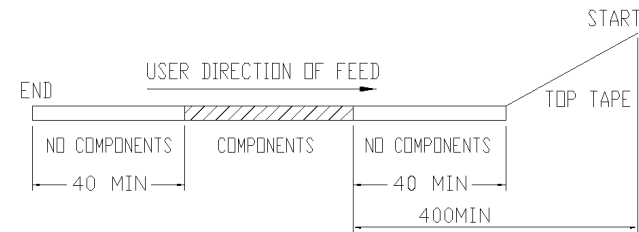
THIS DRAWING IS A CONTROLLED DOCUMENT.		DWN	S. HOU	01FEB2001	TE Connectivity
DIMENSIONS: mm		CHK	J. CHENG	01FEB2001	
TOLERANCES UNLESS OTHERWISE SPECIFIED:		APVD	J. WU	01FEB2001	
0 PLC ± - 1 PLC ± 0.3 2 PLC ± 0.15 3 PLC ± 0.03 4 PLC ± - ANGLES ± 2°		PRODUCT SPEC	NAME		
MATERIAL SEE NOTE		APPLICATION SPEC		108-57068	
FINISH SEE NOTE		WEIGHT	-		SIZE
		CUSTOMER DRAWING		A3	CAGE CODE
				00779	DRAWING NO
				C=440422	RESTRICTED TO
				SCALE	SHEET
				-	1 of 2
				REV	B2

THIS DRAWING IS UNPUBLISHED. RELEASED FOR PUBLICATION
 © COPYRIGHT 2011 BY TYCO ELECTRONICS CORPORATION. ALL RIGHTS RESERVED.

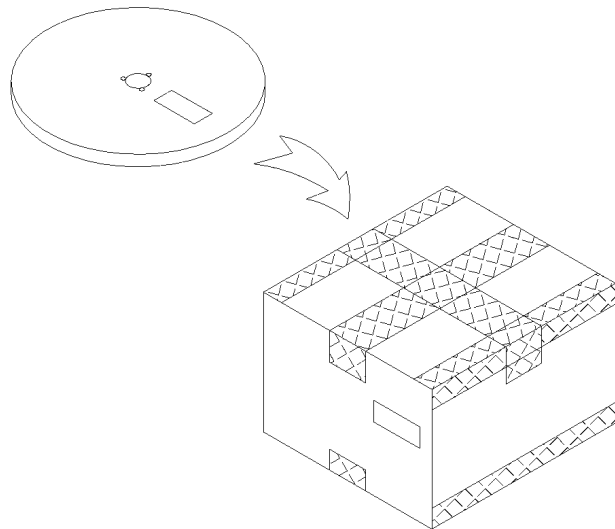
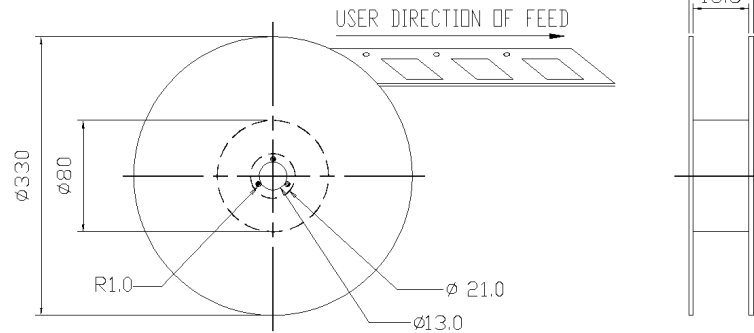
LOC DW	DIST	REVISIONS			
P	LTR	DESCRIPTION	DATE	DWN	APVD
		SEE SHEET 1.			



- NOTES :
- QUANTITY :
10 REEL/SHIPPING BOX
2000 PCS/REEL
 - DIMENSION :
BOX : 345X345X240
REEL : Ø330X20.0
 - GENERAL TOLERANCE : ±0.3
 - WEIGHT :
NET WEIGHT : 6.00kg
GROSS WEIGHT : 6.52kg



REEL DIMENSION: REFERENCE ONLY



THIS DRAWING IS A CONTROLLED DOCUMENT.		DWN	TE Connectivity			
DIMENSIONS: mm		CHK				
TOLERANCES UNLESS OTHERWISE SPECIFIED:		APVD	NAME			
0 PLC ± 1 PLC ±0.3 2 PLC ±0.2 3 PLC ±0.15 4 PLC ± ANGLES ± 3'		PRODUCT SPEC	SHIELD FINGER 4025-T			
MATERIAL		APPLICATION SPEC	SIZE	CAGE CODE	DRAWING NO	RESTRICTED TO
FINISH		WEIGHT	A3	00779	C=440422	
		CUSTOMER DRAWING	SCALE	SHEET	REV	
				2 of 2	B2	