

DRAWING MADE IN THIRD ANGLE PROJECTION

© COPYRIGHT 1980, 81, 82 BY AMP INCORPORATED, HARRISBURG, PA.
ALL INTERNATIONAL RIGHTS RESERVED. AMP INCORPORATED PRODUCTS
COVERED BY U. S. AND FOREIGN PATENTS AND/OR PATENTS PENDING.

3

2

1

LOC GP DIST
00

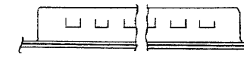
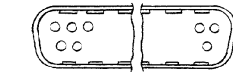
REVISIONS				DATE	APPROVED
P	F	ZONE	LTR	DESCRIPTION	
		A		REVISED PER EC 0S13-0023-03	14MAY83 JG

OBSELETE ~~745036-1~~
745036-2

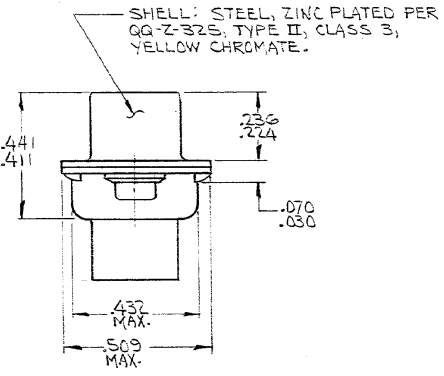
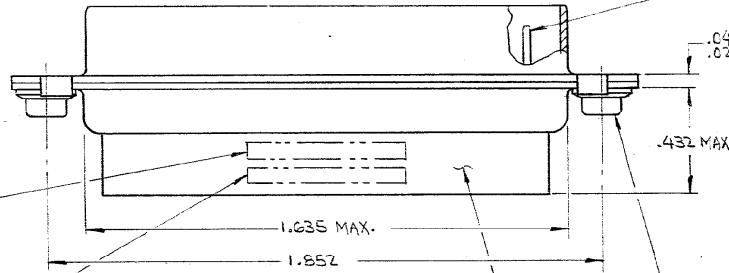
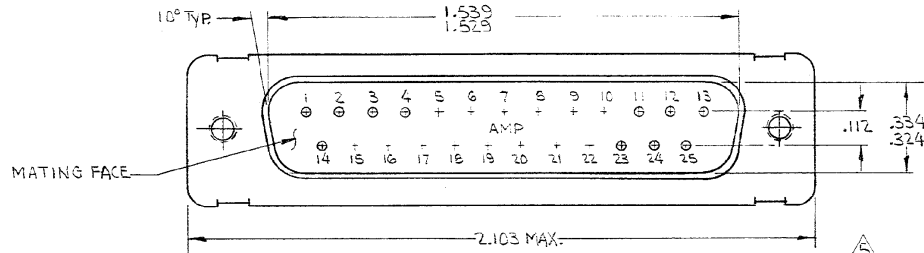
1. AS SHOWN
2. SAME AS -1 EXCEPT:
2. PLUG FRONT HAS GROUNDING INDENTS AS SHOWN IN DETAIL
3. SHELL FINISH IS $0.002-0.004$ TYP BRIGHT TIN OVER BRIGHT NICKEL FLASH

OBSELETE ~~745036-3~~

1. SAME AS -2 EXCEPT:
2. PLUG FRONT SHELL DOES NOT HAVE GROUNDING INDENTS



GROUNDING INDENTS
(-2 ONLY)



SHELL: STEEL, ZINC PLATED PER QQ-Z-325, TYPE II, CLASS 3, YELLOW CHROMATE.

"AMP" & DATE CODE INK STAMPED ON FAR SIDE

AMP PART No. INK STAMPED ON FAR SIDE.

INSERT: GLASS FILLED BLACK NYLON, (SELF EXTINGUISHING)

#4-40 STEEL CLINCH NUT, 2 PLACES.

1. THIS PLUG WILL MATE WITH ANY SIZE 3, 25 POS. RECEPTACLE IN AMPLIMITE SERIES & CONFORMS TO AMP SPEC 108-10,020.
 2. THIS PLUG ACCEPTS SIZE 20 PIN CONTACTS. RETENTION TINES ARE AN INTEGRAL PART OF INSERT.
 3. WIRE INSULATION SIZE OF .068 DIA. MAX. IS RECOMMENDED FOR USE WITH THIS PLUG.
 4. AMP TOOL No. 91067-2 IS RECOMMENDED FOR INSERTION / REMOVAL OF CONTACTS.
5. CONTACTS ARE SHOWN FOR ILLUSTRATION ONLY, NOT PART OF CONNECTOR PACKAGE, MUST BE ORDERED SEPARATELY.

UNLESS OTHERWISE SPECIFIED DIMENSIONS ARE IN INCHES.			CONTRACT NO		PART NO	
TOLERANCES ON: DECIMALS $\pm .005$ ANGLES $\pm 2^\circ$			DR	11/17/80	AMP INCORPORATED Harrisburg, Pa.	
MATERIAL SEE CALLOUT			CHKD	1/2/81		
FINISH SEE CALLOUT			APPD	1-17-80	SIZE	C 00779
			APPD	2/2/80	CODE IDENT NO	745036
			OSGN APPD		DRAWING NO	745036
			OTHER APPD		SCALE	SHEET