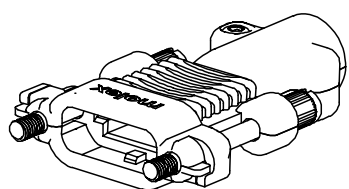
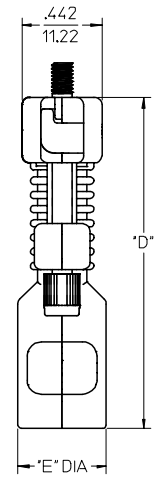
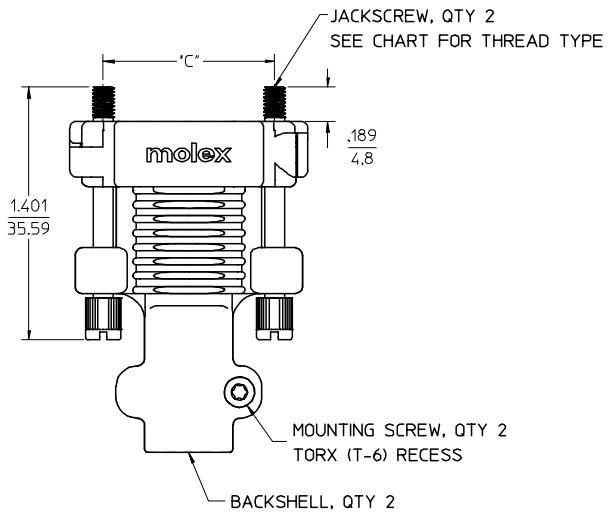
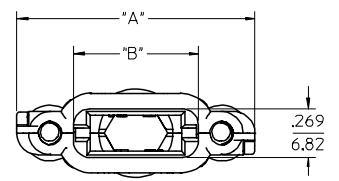


| CKT SIZE | "A" DIM | "B" DIM | "C" DIM | "D" DIM | "E" DIM | CABLE OD |
|----------|-------------|-------------|-------------|-------------|------------|------------|
| 18 | 1.320/33.55 | .691/17.56 | .950/24.13 | 1.835/46.62 | .490/12.45 | .310/7.87 |
| 28 | 1.570/39.90 | .941/23.91 | 1.200/30.48 | 1.835/46.62 | .490/12.45 | .335/8.51 |
| 38 | 1.820/46.25 | 1.191/30.26 | 1.450/36.83 | 2.270/57.65 | .490/12.45 | .355/9.02 |
| 48 | 2.070/52.60 | 1.441/36.61 | 1.700/43.18 | 2.478/62.93 | .569/14.45 | .440/11.18 |
| 72 | 2.670/67.84 | 2.041/51.85 | 2.300/58.42 | 2.741/69.62 | .726/18.45 | .635/16.13 |

- NOTES:
1. MATERIALS:
 BACKSHELL - ZINC ALLOY DIE CAST, FINISH DULL NICKEL PLATING.
 JACKSCREW - STAINLESS STEEL, FINISH PASSIVATE.
 MOUNTING SCREW - STEEL ALLOY, FINISH CLEAR ZINC PLATING.
 2. PLUG CABLE KIT COMPONENTS TO BE BULK PACKAGED PER PK-75115-991.
 3. MOUNTING SCREW APPLICATION TORQUE TO BE MIN. 3 lbf-in AND NOT TO EXCEED 4 lbf-in.
 5. STRAIN RELIEF IS DESIGNED FOR THE CABLE DIAMETER SPECIFIED IN TABLE ON THIS PAGE.
 WHEN USING SMALLER CABLE DIAMETER, USE HEAT SHRINK TUBING TO BUILD UP THE CABLE TO THE SPECIFIED DIAMETER.



18 CKT PLUG CABLE KIT



| | | | | |
|------------------------------------|----------------------------------|-----------------|---------------|---------------------------|
| 75115-2072 | 75115-3072 | 72 | X | CONTACT PRODUCT MARKETING |
| 75115-2048 | 75115-3048 | 48 | | |
| 75115-2038 | 75115-3038 | 38 | X | CONTACT PRODUCT MARKETING |
| 75115-2028 | 75115-3028 | 28 | | |
| 75115-2018 | 75115-3018 | 18 | | |
| PLUG CABLE KIT (4-40 JACKSCREW) | PLUG CABLE KIT (M3 JACKSCREW) | CIRCUIT SIZE | NOT TOOLED | |

| | | | | | | | | | |
|---|-------------------------------|---|--------------------------|--|------------------------|---------------------------|------------------------------|---------------------|--|
| MOD JACKSCREW MATERIAL EC NO: UCP2007-1309 DRWN:MSIBARRA2007/02/27 CHKD:DMORGAN2007/03/05 APPR:SMILLER 2007/03/06 | QUALITY SYMBOLS ▽=0 ◻=0 | GENERAL TOLERANCES (UNLESS SPECIFIED) | | SCALE 2:1 | DESIGN UNITS METRIC | THIRD ANGLE PROJECTION | REVISE ON CAD ONLY | | |
| | | 4 PLACES ± --- ± --- 3 PLACES ± --- ±.010 2 PLACES ±0.25 ± --- 1 PLACE ± --- ± --- | DIMENSION STYLE IN/MM | TITLE SALES DRAWING TDP PLUG CABLE KIT DULL NICKEL FINISH | | | | | |
| | | DRAFT WHERE APPLICABLE MUST REMAIN WITHIN DIMENSIONS | | DRAWN BY TMCCLELL | DATE 02/11/06 | CHECKED BY TMCCLELL | DATE 02/11/07 | MOLEX INCORPORATED | |
| | | | | APPROVED BY BANAKIS | DATE 02/11/07 | MATERIAL NO. SEE CHART | DOCUMENT NO. SD-75115-002 | SHEET NO. 1 OF 1 | |

THIS DRAWING CONTAINS INFORMATION THAT IS PROPRIETARY TO MOLEX INCORPORATED AND SHOULD NOT BE USED WITHOUT WRITTEN PERMISSION