

4

3

2

1


THIS DRAWING IS UNPUBLISHED. RELEASED FOR PUBLICATION
© COPYRIGHT ALL RIGHTS RESERVED.

LOC	DIST	REVISIONS			
P	LTR	DESCRIPTION	DATE	DWN	APVD
	B1	ECR-16-009824	28JUL2016	GK	SD

REPLACED BY OCEAN STYLE APPLICATOR PART NUMBER 2836300-2

FOR REPLACEMENT PARTS FOR APPLICATOR 1339512 REFER TO ADDITIONAL PAGE(S). SPARE PARTS KIT (IF LISTED) WILL REMAIN AVAILABLE.

THE REPLACEMENT OCEAN STYLE APPLICATOR HAS THE SAME TERMINATOR/PRESS INTERFACE AS APPLICATOR 1339512

THIS DRAWING IS A CONTROLLED DOCUMENT.		DWN	GOPALAKRISHNA HV		 TE Connectivity
DIMENSIONS:		CHK	GOPALAKRISHNA HV		
TOLERANCES UNLESS OTHERWISE SPECIFIED:		APVD	STOUGH DALE		NAME END FEED HD-I APPLICATOR
0 PLC ±		PRODUCT SPEC			
1 PLC ±		APPLICATION SPEC			SIZE A3
2 PLC ±		WEIGHT	CAGE CODE	DRAWING NO	
3 PLC ±				©- 1339512	
4 PLC ±				SCALE	SHEET 1 OF 2 REV B1
ANGLES ±				CUSTOMER DRAWING	
MATERIAL	FINISH				

A

A

D

D

C

C

B

B

DRAWING MADE IN THIRD ANGLE PROJECTION

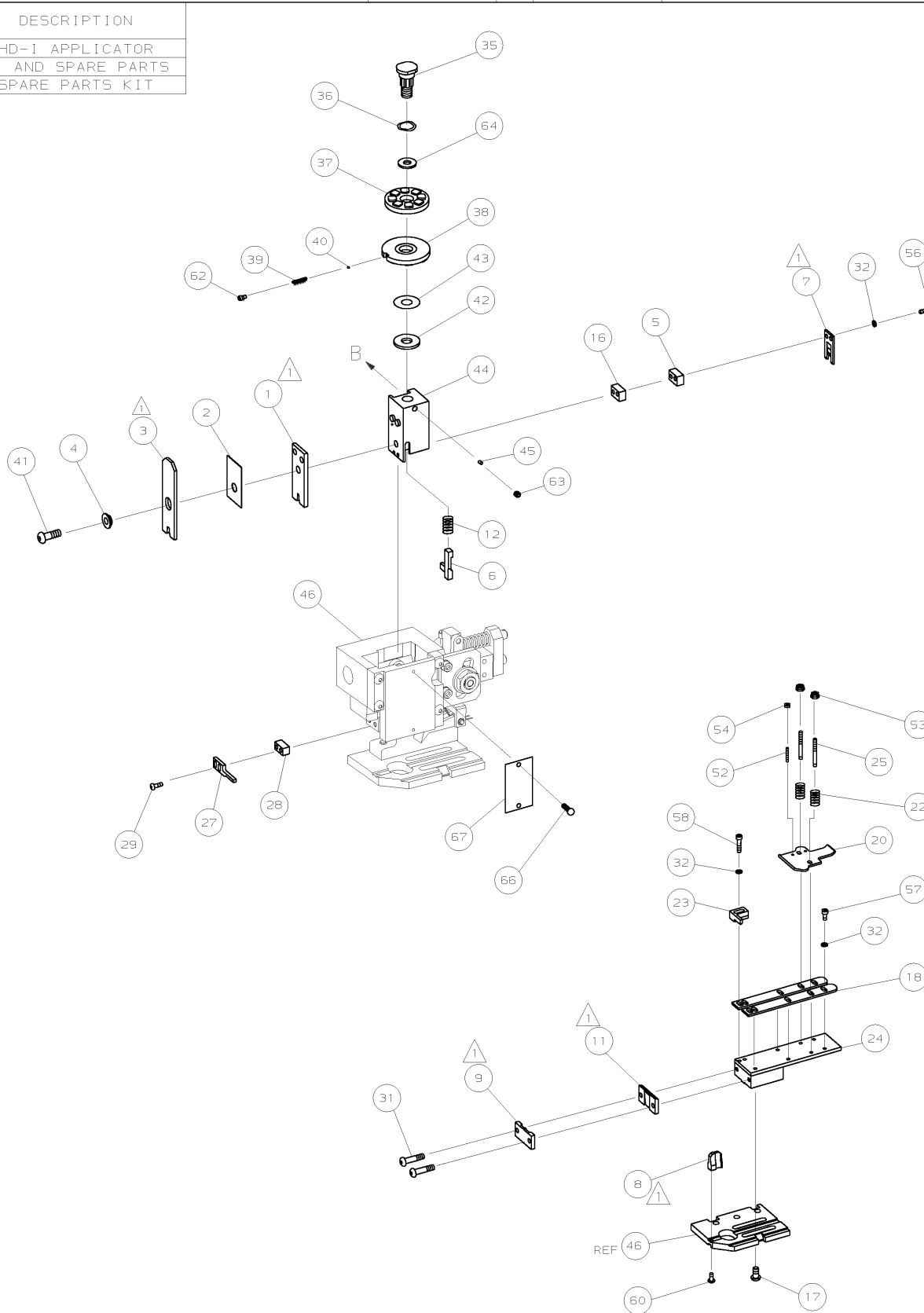
1339512 ◀ ▶ 1339512

/home/us016926/DMTEProd

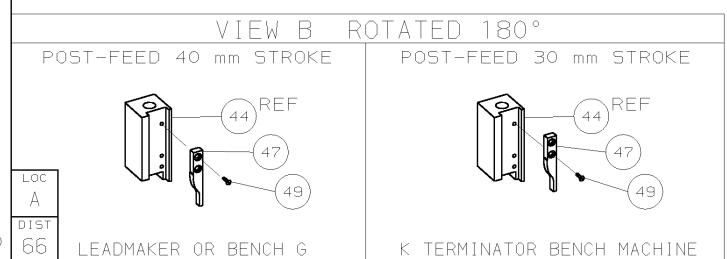
PART NUMBER	REV	FIRST USED	TERMINATOR	FEED TYPE	DESCRIPTION
1339512-1	B		- BENCH & LEADMAKER	MECH POST FEED	HD-I APPLICATOR
7-1339512-1	B		- BENCH & LEADMAKER	MECH POST FEED	-1 AND SPARE PARTS
7-1339512-7	A		-	-	SPARE PARTS KIT

CRIMP DATA (AMP TERMINAL)

CRIMP		SIZE	TYPE	RANGE
TERMINAL NAME: RECEPTACLE POSITIVE-LOCK, .187 SERIES				
WIRE	1.78 [.070 IN]	F		24 - 20 AWG
INSUL	3.56 [1.140 IN]	F		1.52-2.79 [.060-.110 IN]
WIRE STRIP LENGTH	3.68-4.45 [1.145-.175 IN]	APPL INSTRUCTION		
TERMINAL APPL SPEC		114-2074		FEED 20.70 [.815 IN]
TERMINALS APPLIED				
63407				
WIRE SIZE mm ² AWG	CRIMP HEIGHT	PIN PN & LENGTH [IN]		
20 AWG	1.04 ±0.05 [.041 ±.002 IN]	4-354779-6 [.3220]		
22 AWG	0.97 ±0.05 [.038 ±.002 IN]	5-354779-3 [.3255]		
24 AWG	0.89 ±0.05 [.035 ±.002 IN]	6-354779-0 [.3290]		



- RECOMMENDED SPARE PARTS.
- GREASE RAM, CAM, CAM FOLLOWER AND FEED ROD LIGHTLY.
 - LUBRICATE DAILY PER THE APPLICATOR INSTRUCTION SHEET SUPPLIED WITH THE APPLICATOR.



	QTY	REV	PART NO	DESCRIPTION	ITEM NO
-	1	1	1339512	PRINT, APPLICATOR LOG SHEET	73
-	1	1	1338705-2	DOCUMENTATION PACKAGE	72
-	-	-			71
-	-	-			70
-	-	-			69
-	-	-			68
-	1	1	461264-1	PLATE, IDENTIFICATION	67
-	2	2	21017-2	SCR, DRIVE (#2X.19) ID PLATE	66
-	-	-			65
-	1	1	986950-1	WASHER, FLAT PRECISION	64
-	1	1	3-18031-0	SCR, SKT SET (M6X6) RAM	63
-	1	1	18023-9	SCR, SKT CAP (M4X6) CP DSC	62
-	-	-			61
-	1	1	18024-7	SCR, BHC (M4X10) ANVIL	60
-	-	-			59
-	2	2	1-18023-3	SCR, SHC (M4X16) HOLD DOWN	58
-	5	5	18023-9	SCR, SHC (M4X6) STRIP GUIDE	57
-	2	2	9-18023-6	SCR, SHC (M4X14) SLUG BLADE	56
-	-	-			55
-	2	2	18029-1	NUT, HEX (M3) DRAG	54
-	2	2	986965-1	NUT, HEX SL (M4) DRAG STUD	53
-	2	2	2-18032-2	SCR, SKT SET (M3X10) DRAG	52
-	-	-			51
-	-	-			50
-	1	1	18024-3	SCR, BHC (M3X10) CAM	49
-	-	-			48
-	1	1	1338676-1	CAM, POST-FEED 30 & 40 mm ST	47
-	1	1	1338662-1	APPLICATOR, BASIC (SUBASSY)	46
-	1	1	690191-1	PLUG, NYLON	45
-	1	1	1320998-1	RAM	44
-	1	1	690125-1	WASHER, LAMINATED	43
-	1	1	690124-1	WASHER, RAM	42
-	1	1	2-18024-6	SCREW, BHC (M8X25) CRIMPER	41
-	1	1	23241-1	BALL, STEEL	40
-	1	1	2-22278-7	SPRING, COMPRESSION	39
-	1	1	1320922-5	DISC, INSULATION	38
-	1	1	354777-1	WIRE DISC, PLASTIC	37
-	1	1	22480-5	WASHER, SPRING	36
-	1	1	690212-1	POST, RAM	35
-	-	-			34
-	-	-			33
-	9	9	18025-2	WASHER, LOCK (M4) SHEAR BL	32
-	2	2	1-18024-0	SCR, BHC (M4X20) SHEAR PL	31
-	-	-			30
-	2	2	18024-8	SCR, BHC (M4X12) STRIPPER	29
-	1	1	1-690451-1	SPACER, STRIPPER	28
-	1	1	240639-1	STRIPPER	27
-	-	-			26
-	2	2	1320906-1	DRAG, STUD	25
-	1	1	1320995-1	STRIP GUIDE	24
-	1	1	240825-2	PLATE, STRIP HOLD DOWN	23
-	2	2	4-22281-1	SPRING, DRAG	22
-	-	-			21
-	1	1	1338665-1	DRAG, STOCK	20
-	-	-			19
-	2	2	1338663-3	GUIDE, LOWER STRIP	18
-	4	4	1-18024-8	SCR, BHC (M6X12) STRIP GD PL	17
-	1	1	1338708-1	SPACER, SLUG BLADE	16
-	-	-			15
-	-	-			14
-	-	-			13
-	1	1	23846-1	SPRING, HOLD DOWN	12
-	1	1	240833-1	PLATE, REAR SHEAR	11
-	-	-			10
-	1	1	690482-5	PLATE, FRONT SHEAR	9
-	1	2	1333215-2	ANVIL	8
-	1	1	690474-5	BLADE, SLUG	7
-	1	1	5-455892-0	HOLD DOWN, TERMINAL	6
-	1	1	1-240641-4	SPACER, SLUG BLADE	5
-	1	1	238009-1	SPACER, BLOCK CRIMPER	4
-	1	2	8-456134-0	CRIMPER, INSULATION	3
-	1	1	455888-4	SPACER, CRIMPER	2
-	1	2	3-456404-0	CRIMPER, WIRE	1

QTY REQD PER ASSY	PART NO	DESCRIPTION	ITEM NO
-77	-71	-1	

REVISION RECORD

DIMENSIONS: mm (INCHES) MATL HT TR FIN

DO NOT SCALE PRINT.

TOLERANCES UNLESS OTHERWISE SPECIFIED:

1 PLC DEC ±
2 PLC DEC ±
3 PLC DEC ±

ANGLES ±
SURF TEXTURE, REMOVE BURRS, BREAK SHARP EDGES RO. 38 MAX

DR M. CLIFFORD
CHK
APP F. BACKHURST
REL
APP DATE

NAME END FEED HD-I APPLICATOR
MACHINE REF HD-I APPL

SCALE D DWG NO 1339512 SHEET 1 of 1 REV B

CASE CODE 00779 CUSTOMER AND ASSEMBLY DRAWING

THIS DRAWING IS A CONTROLLED DOCUMENT

SET UP GAGE 458638-3

LAYOUT L1339512

LOC A DIST 66

AMP 1756 REV 3-92 24-NOV-03 13:28:53 us016926