

## Spring Cage Miniature Terminal Blocks FK-MPT 0,5/...-3,5

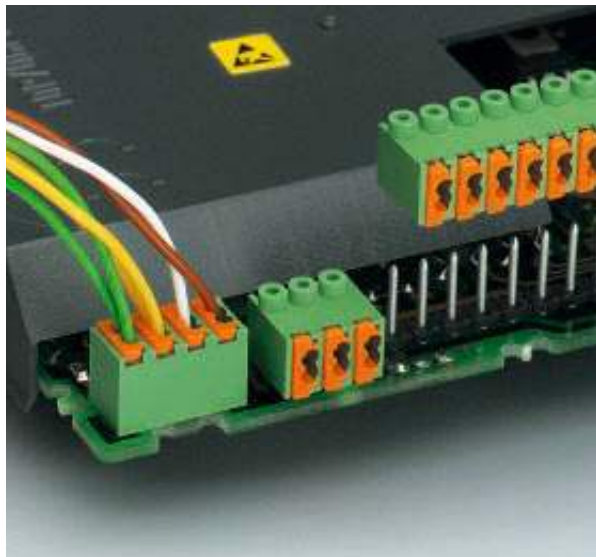
The mini print terminals, FK-MPT 0,5 and FK-MPT 0,5...-H provide one double connection per position across a 3.5 mm pitch. This space-saving arrangement is of particular advantage for looping through potentials on miniature modules.

The easy-to-use spring cage connection is suitable for solid conductors up to a cross section of 0.5 mm<sup>2</sup> or a diameter of 0.8 mm. The stripped conductors make contact automatically when inserted; it is only necessary to operate the orange lever for small cross sections or to break the connection.

The technical data is the same as for the soldered version, and a plug socket for pin strips (1 mm Ø pin) is integrated in the FK-MPT 0,5-ST.

Starting up technical equipment is a convenient matter because the printed circuit terminal blocks can be prewired and quickly installed.

The **PST 1,0/...-3,5** pin strip represents a logical supplement to the FK-MPT 0,5-ST. It is compatible with conventional pin strips, available on request in tube magazines and easy to solder in the reflow oven.



### COMBICON Select

The COMBICON search engine with CAD downloading



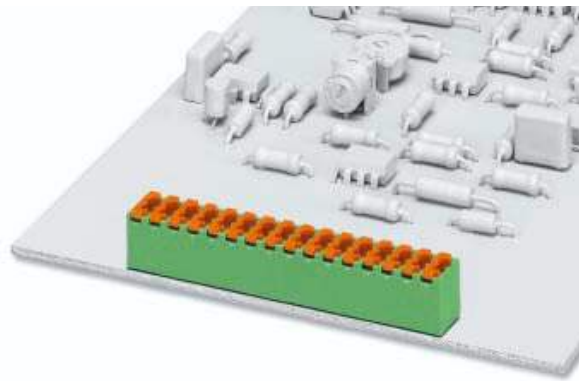
COMBICON Select – the printed circuit board connection software supports your workflow from the PCB and housing layout to the ordering process with:

- Systematic and fast selection of products
- Universal Internet aided engineering with extensive CAD downloading
- Easy-to-use e-shopping functions.

<http://select.phoenixcontact.com>

# FK-MPT 0,5 /...-3,5

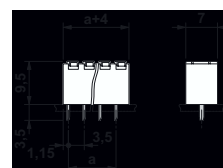
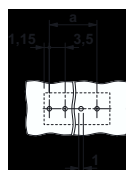
## 3.5 mm Pitch



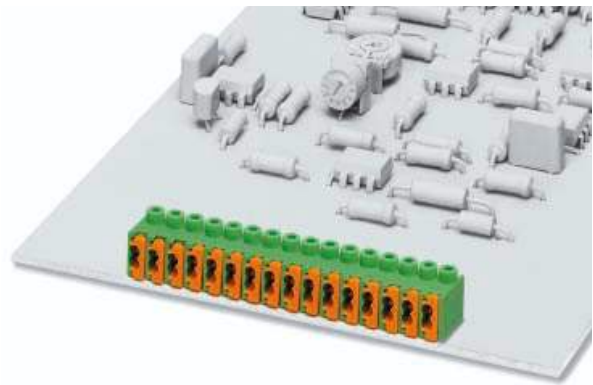
Description	No. of pos.	Dim. a [mm]	Type	Order No.	Pcs./Pkt.
<b>Spring cage miniature terminal block, 3.5 mm pitch, color: green</b>					
	2	3.5	FK-MPT 0,5/2-3,5	18 91 06 9	50
	3	7	FK-MPT 0,5/3-3,5	18 91 07 2	
	4	10.5	FK-MPT 0,5/4-3,5	18 91 08 5	
	5	14	FK-MPT 0,5/5-3,5	18 91 09 8	
	6	17.5	FK-MPT 0,5/6-3,5	18 91 10 8	
	7	21	FK-MPT 0,5/7-3,5	18 91 11 1	
	8	24.5	FK-MPT 0,5/8-3,5	18 91 12 4	
	9	28	FK-MPT 0,5/9-3,5	18 91 13 7	
	10	31.5	FK-MPT 0,5/10-3,5	18 91 14 0	
	11	35	FK-MPT 0,5/11-3,5	18 91 15 3	
	12	38.5	FK-MPT 0,5/12-3,5	18 91 16 6	
	13	42	FK-MPT 0,5/13-3,5	18 91 17 9	
	14	45.5	FK-MPT 0,5/14-3,5	18 91 18 2	
	15	49	FK-MPT 0,5/15-3,5	18 91 19 5	
	16	52.5	FK-MPT 0,5/16-3,5	18 91 20 5	

### Technical data

Dimensions		see description		
Pitch	[mm]	3.5		
Hole diameter	[mm]	1		
Pin dimensions	[mm]	0.4 x 0.9		
<b>Technical data in accordance with IEC / DIN VDE</b>				
Insulating material group	-	IIIa		
Surge voltage category / contamination class	-/-	III / 3	III / 2	II / 2
Rated voltage	[V]	160	250	250
Rated surge voltage	[kV]	2.5	2.5	2.5
Nominal current / cross section	[A]/[mm <sup>2</sup> ]	4 / 0.5		
Maximum load current / cross section	[A]/[mm <sup>2</sup> ]	4 / 0.5		
<b>Capacity connection</b>				
Solid / stranded / conductor sizes	[mm <sup>2</sup> ]/[mm <sup>2</sup> ]/AWG	0.12 - 0.5 / — / 28 - 20		
Stranded with ferrule without / with plastic sleeve	[mm <sup>2</sup> ]	—		
<b>Stripping length</b>	[mm]	6.5		
Internal cylindrical gauge (IEC 60 947-1)	-			
<b>Insulating material</b>				
Inflammability class in acc. with UL 94		PBT		
		V0		
<b>Approval data (UL/CUL and CSA)</b>				
Nominal voltage / current / conductor sizes	UL/CUL:[V] / [A] / AWG CSA:[V] / [A] / AWG	300 / 4 / 28 - 20		
		—		



# FK-MPT 0,5 /...ST-3,5 3.5 mm Pitch

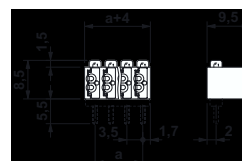


Description	No. of pos. <sup>1)</sup>	Dim. a [mm]	Type	Order No.	Pcs./Pkt.
<b>Spring cage miniature terminal block, 3.5 mm pitch, color: green</b>					
	2	3.5	FK-MPT 0,5/2-ST-3,5	19 13 92 1	50
	3	7	FK-MPT 0,5/3-ST-3,5	19 13 93 4	
	4	10.5	FK-MPT 0,5/4-ST-3,5	19 13 94 7	
	5	14	FK-MPT 0,5/5-ST-3,5	19 13 95 0	
	6	17.5	FK-MPT 0,5/6-ST-3,5	19 13 96 3	
	7	21	FK-MPT 0,5/7-ST-3,5	19 13 97 6	
	8	24.5	FK-MPT 0,5/8-ST-3,5	19 13 98 9	
	9	28	FK-MPT 0,5/9-ST-3,5	19 13 99 2	
	10	31.5	FK-MPT 0,5/10-ST-3,5	19 14 00 1	
	11	35	FK-MPT 0,5/11-ST-3,5	19 14 02 7	
	12	38.5	FK-MPT 0,5/12-ST-3,5	19 14 03 0	
	13	42	FK-MPT 0,5/13-ST-3,5	19 14 04 3	
	14	45.5	FK-MPT 0,5/14-ST-3,5	19 14 05 6	
	15	49	FK-MPT 0,5/15-ST-3,5	19 14 06 9	
	16	52.5	FK-MPT 0,5/16-ST-3,5	19 14 07 2	

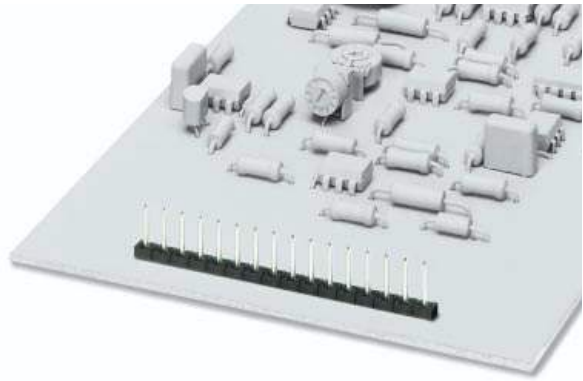
## Technical data

Dimensions		see description
Pitch	[mm]	3.5
Hole diameter	[mm]	Dependent on the pin strip used
Pin dimensions	[mm]	Dependent on the pin strip used
<b>Technical data in accordance with IEC / DIN VDE</b>		
Insulating material group	—	IIIa
Surge voltage category / contamination class	—/—	III / 3    III / 2    II / 2
Rated voltage	[V]	160    250    250
Rated surge voltage	[kV]	2.5    2.5    2.5
Nominal current / cross section	[A]/[mm <sup>2</sup> ]	4 / 0.5
Maximum load current / cross section	[A]/[mm <sup>2</sup> ]	4 / 0.5
<b>Capacity connection</b>		
Solid / stranded / conductor sizes	[mm <sup>2</sup> ]/[mm <sup>2</sup> ]/AWG	0.12 - 0.5 / — / 28 - 20
Stranded with ferrule without / with plastic sleeve	[mm <sup>2</sup> ]	—
<b>Stripping length</b>	[mm]	6.5
Internal cylindrical gauge (IEC 60 947-1)	—	
<b>Insulating material</b>		
Inflammability class in acc. with UL 94		PBT V0
<b>Approval data (UL/CUL and CSA)</b>		
Nominal voltage / current / conductor sizes	UL/CUL:[V] / [A] / AWG CSA:[V] / [A] / AWG	300 / 4 / 28 - 20 —

<sup>1)</sup> Further number of positions on request.



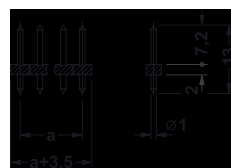
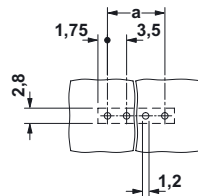
# Pin Strip PST 1,0/...-3,5 3.5 mm Pitch



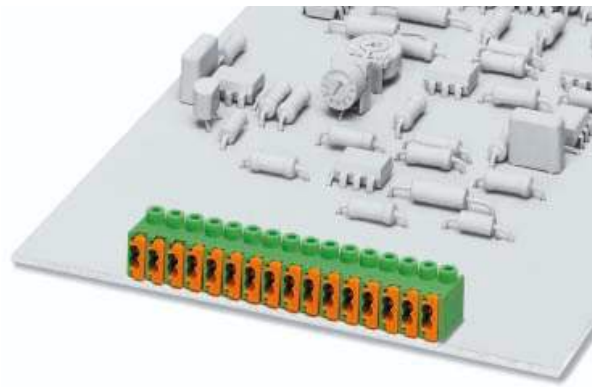
Description	No. of pos.	Dim. a [mm]	Type	Order No.	Pcs./Pkt.
<b>Pin strip, 3.5 mm pitch,</b> for use with mini printed circuit terminal blocks FK-MPT 0,5/...-ST-3,5 color: black	2	3.5	<b>PST 1,0/2-3,5</b>	<b>19 45 09 6</b>	50 <sup>1)</sup>
	3	7	<b>PST 1,0/3-3,5</b>	<b>19 45 10 6</b>	
	4	10.5	<b>PST 1,0/4-3,5</b>	<b>19 45 11 9</b>	
	5	14	<b>PST 1,0/5-3,5</b>	<b>19 45 12 2</b>	
	6	17.5	<b>PST 1,0/6-3,5</b>	<b>19 45 13 5</b>	
	7	21	<b>PST 1,0/7-3,5</b>	<b>19 45 14 8</b>	
	8	24.5	<b>PST 1,0/8-3,5</b>	<b>19 45 15 1</b>	
	9	28	<b>PST 1,0/9-3,5</b>	<b>19 45 16 4</b>	
	10	31.5	<b>PST 1,0/10-3,5</b>	<b>19 45 17 7</b>	
	11	35	<b>PST 1,0/11-3,5</b>	<b>19 45 18 0</b>	
	12	38.5	<b>PST 1,0/12-3,5</b>	<b>19 45 19 3</b>	
	13	42	<b>PST 1,0/13-3,5</b>	<b>19 45 20 3</b>	
	14	45.5	<b>PST 1,0/14-3,5</b>	<b>19 45 21 6</b>	
	15	49	<b>PST 1,0/15-3,5</b>	<b>19 45 22 9</b>	
	16	52.5	<b>PST 1,0/16-3,5</b>	<b>19 45 23 2</b>	

Technical data		see description		
Dimensions				
Pitch	[mm]	3.5		
Hole diameter	[mm]	1.2		
Pin dimensions	[mm]x[mm]	∅ 1		
<b>Technical data in accordance with IEC/ DIN VDE</b>				
Insulating material group	-	IIIa		
Surge voltage category / contamination class	-/-	III / 3	III / 2	II / 2
Rated voltage	[V]	160	250	250
Rated surge voltage	[kV]	2.5	2.5	2.5
Nominal current / cross section	[A]	8 <sup>2)</sup> / -		
Maximum load current / cross section	[A]	8 <sup>2)</sup> / -		
<b>Insulating material</b>		PA		
Inflammability class in acc. with UL 94		V0		
<b>Approval data (UL/CUL and CSA)</b>				
Nominal voltage / current / conductor sizes	UL/CUL: [V]/[A]/AWG CSA: [V]/[A]/AWG	300 / 10 / -- --		

1) Larger packaging units are available on request.  
2) The maximum current depends on the plug used. The lower value of the two for plug and pin strip is the deciding factor.



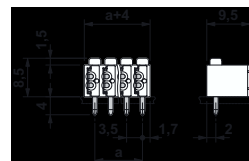
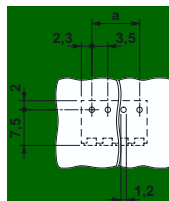
# FK-MPT 0,5 /...-3,5-H 3.5 mm Pitch



Description	No. of pos.	Dim. a [mm]	Type	Order No.	Pcs./Pkt.
<b>Spring cage miniature terminal block, 3.5 mm pitch, color: green</b>					
	2	3.5	FK-MPT 0,5/2-3,5-H	19 28 76 7	50
	3	7	FK-MPT 0,5/3-3,5-H	19 28 77 0	
	4	10.5	FK-MPT 0,5/4-3,5-H	19 28 78 3	
	5	14	FK-MPT 0,5/5-3,5-H	19 28 79 6	
	6	17.5	FK-MPT 0,5/6-3,5-H	19 28 80 6	
	7	21	FK-MPT 0,5/7-3,5-H	19 28 81 9	
	8	24.5	FK-MPT 0,5/8-3,5-H	19 28 82 2	
	9	28	FK-MPT 0,5/9-3,5-H	19 28 83 5	
	10	31.5	FK-MPT 0,5/10-3,5-H	19 28 84 8	
	11	35	FK-MPT 0,5/11-3,5-H	19 28 85 1	
	12	38.5	FK-MPT 0,5/12-3,5-H	19 28 86 4	
	13	42	FK-MPT 0,5/13-3,5-H	19 28 87 7	
	14	45.5	FK-MPT 0,5/14-3,5-H	19 28 88 0	
	15	49	FK-MPT 0,5/15-3,5-H	19 28 89 3	
	16	52.5	FK-MPT 0,5/16-3,5-H	19 28 90 3	

## Technical data

Dimensions		see description		
Pitch	[mm]	3.5		
Hole diameter	[mm]	1.1		
Pin dimensions	[mm]	Ø 1		
<b>Technical data in accordance with IEC / DIN VDE</b>				
Insulating material group		IIIa		
Surge voltage category / contamination class	-/-	III / 3	III / 2	II / 2
Rated voltage	[V]	160	250	250
Rated surge voltage	[kV]	2.5	2.5	2.5
Nominal current / cross section	[A]/[mm <sup>2</sup> ]	4 / 0.5		
Maximum load current / cross section	[A]/[mm <sup>2</sup> ]	4 / 0.5		
<b>Capacity connection</b>				
Solid / stranded / conductor sizes	[mm <sup>2</sup> ]/[mm <sup>2</sup> ]/AWG	0.12 - 0.5 / — / 28 - 20		
Stranded with ferrule without / with plastic sleeve	[mm <sup>2</sup> ]	—		
<b>Stripping length</b>	[mm]	6.5		
Internal cylindrical gauge (IEC 60 947-1)		—		
<b>Insulating material</b>				
Inflammability class in acc. with UL 94		PBT V0		
<b>Approval data (UL/CUL and CSA)</b>				
Nominal voltage / current / conductor sizes	UL/CUL:[V] / [A] / AWG CSA:[V] / [A] / AWG	300 / 4 / 28 - 20 —		



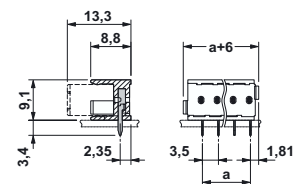
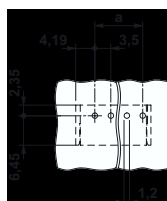
# FK-MPT 0,5 /...-3,5-ICA 3.5 mm Pitch



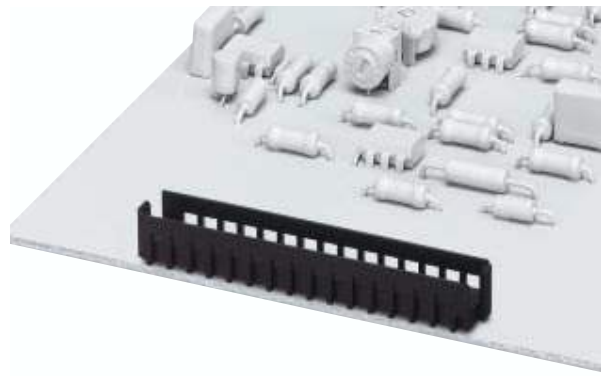
Description	No. of pos.	Dim. a [mm]	Type	Order No.	Pcs./Pkt.
<b>Spring cage miniature terminal block, 3.5 mm pitch, color: green</b>					
	2	3.5	FK-MPT 0,5/2-ICA-3,5	19 30 32 8	50
	3	7	FK-MPT 0,5/3-ICA-3,5	19 30 33 1	
	4	10.5	FK-MPT 0,5/4-ICA-3,5	19 30 34 4	
	5	14	FK-MPT 0,5/5-ICA-3,5	19 30 35 7	
	6	17.5	FK-MPT 0,5/6-ICA-3,5	19 30 36 0	
	7	21	FK-MPT 0,5/7-ICA-3,5	19 30 37 3	
	8	24.5	FK-MPT 0,5/8-ICA-3,5	19 30 38 6	
	9	28	FK-MPT 0,5/9-ICA-3,5	19 30 39 9	
	10	31.5	FK-MPT 0,5/10-ICA-3,5	19 30 40 9	
	11	35	FK-MPT 0,5/11-ICA-3,5	19 30 41 2	
	12	38.5	FK-MPT 0,5/12-ICA-3,5	19 30 42 5	
	13	42	FK-MPT 0,5/13-ICA-3,5	19 30 43 8	
	14	45.5	FK-MPT 0,5/14-ICA-3,5	19 30 44 1	
	15	49	FK-MPT 0,5/15-ICA-3,5	19 30 45 4	
	16	52.5	FK-MPT 0,5/16-ICA-3,5	19 30 46 7	

## Technical data

Dimensions		see description		
Pitch	[mm]	3.5		
Hole diameter	[mm]	1		
Pin dimensions	[mm]	0.3 x 0.9		
<b>Technical data in accordance with IEC / DIN VDE</b>				
Insulating material group	—	IIIa		
Surge voltage category / contamination class	—/—	III / 3	III / 2	II / 2
Rated voltage	[V]	160	250	250
Rated surge voltage	[kV]	2.5	2.5	2.5
Nominal current / cross section	[A]/[mm <sup>2</sup> ]	3 / —		
Maximum load current / cross section	[A]/[mm <sup>2</sup> ]	3 / —		
<b>Capacity connection</b>				
Solid / stranded / conductor sizes	[mm <sup>2</sup> ]/[mm <sup>2</sup> ]/AWG	—		
Stranded with ferrule without / with plastic sleeve	[mm <sup>2</sup> ]	—		
<b>Stripping length</b>	[mm]	—		
Internal cylindrical gauge (IEC 60 947-1)	—	—		
<b>Insulating material</b>				
Inflammability class in acc. with UL 94		PA		
<b>Approval data (UL/CUL and CSA)</b>		V0		
Nominal voltage / current / conductor sizes	UL/CUL:[V] / [A] / AWG CSA:[V] / [A] / AWG	300 / 4 / --		
		—		



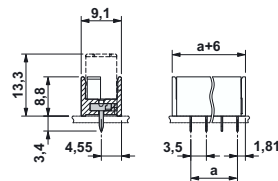
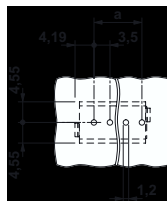
# FK-MPT 0,5 /...-3,5-ICVA 3.5 mm Pitch



Description	No. of pos.	Dim. a [mm]	Type	Order No.	Pcs./Pkt.
<b>Spring cage miniature terminal block, 3.5 mm pitch, color: green</b>					
	2	3.5	FK-MPT 0,5/2-ICVA-3,5	19 30 47 0	50
	3	7	FK-MPT 0,5/3-ICVA-3,5	19 30 48 3	
	4	10.5	FK-MPT 0,5/4-ICVA-3,5	19 30 49 6	
	5	14	FK-MPT 0,5/5-ICVA-3,5	19 30 50 6	
	6	17.5	FK-MPT 0,5/6-ICVA-3,5	19 30 51 9	
	7	21	FK-MPT 0,5/7-ICVA-3,5	19 30 52 2	
	8	24.5	FK-MPT 0,5/8-ICVA-3,5	19 30 53 5	
	9	28	FK-MPT 0,5/9-ICVA-3,5	19 30 54 8	
	10	31.5	FK-MPT 0,5/10-ICVA-3,5	19 30 55 1	
	11	35	FK-MPT 0,5/11-ICVA-3,5	19 30 56 4	
	12	38.5	FK-MPT 0,5/12-ICVA-3,5	19 30 57 7	
	13	42	FK-MPT 0,5/13-ICVA-3,5	19 30 58 0	
	14	45.5	FK-MPT 0,5/14-ICVA-3,5	19 30 59 3	
	15	49	FK-MPT 0,5/15-ICVA-3,5	19 30 60 6	
	16	52.5	FK-MPT 0,5/16-ICVA-3,5	19 30 61 9	

## Technical data

Dimensions		see description		
Pitch	[mm]	3.5		
Hole diameter	[mm]	1		
Pin dimensions	[mm]	0.3 x 0.9		
<b>Technical data in accordance with IEC / DIN VDE</b>				
Insulating material group	-	IIIa		
Surge voltage category / contamination class	-/-	III / 3	III / 2	II / 2
Rated voltage	[V]	160	250	250
Rated surge voltage	[kV]	2.5	2.5	2.5
Nominal current / cross section	[A]/[mm <sup>2</sup> ]	3 / -		
Maximum load current / cross section	[A]/[mm <sup>2</sup> ]	3 / -		
<b>Capacity connection</b>				
Solid / stranded / conductor sizes	[mm <sup>2</sup> ]/[mm <sup>2</sup> ]/AWG	-		
Stranded with ferrule without / with plastic sleeve	[mm <sup>2</sup> ]	-		
<b>Stripping length</b>	[mm]	-		
Internal cylindrical gauge (IEC 60 947-1)	-	-		
<b>Insulating material</b>				
Inflammability class in acc. with UL 94		PA		
<b>Approval data (UL/CUL and CSA)</b>		V0		
Nominal voltage / current / conductor sizes	UL/CUL:[V] / [A] / AWG CSA:[V] / [A] / AWG	300 / 4 / --		



30.04.05 TNR: 5097995-06

© Phoenix Contact 2005