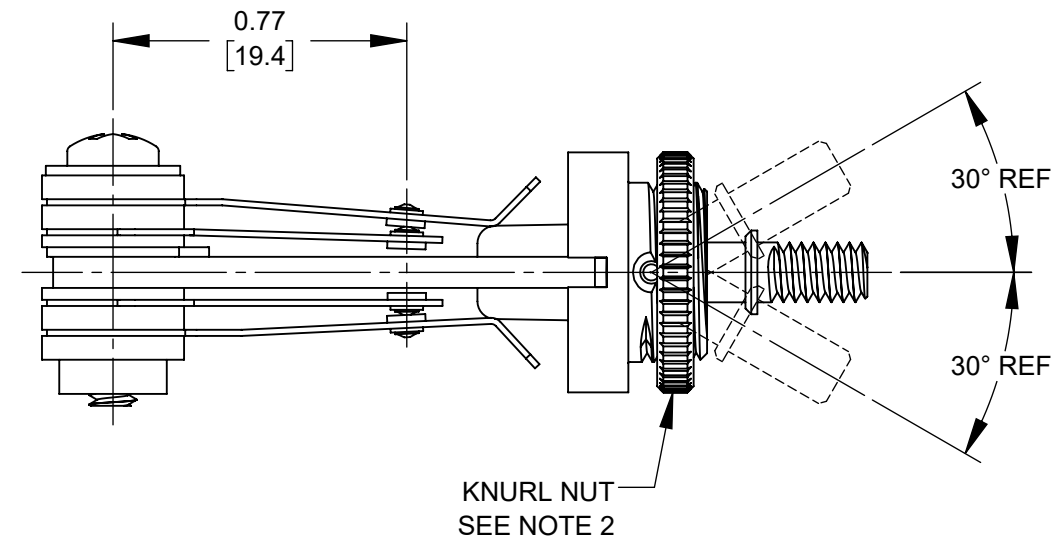
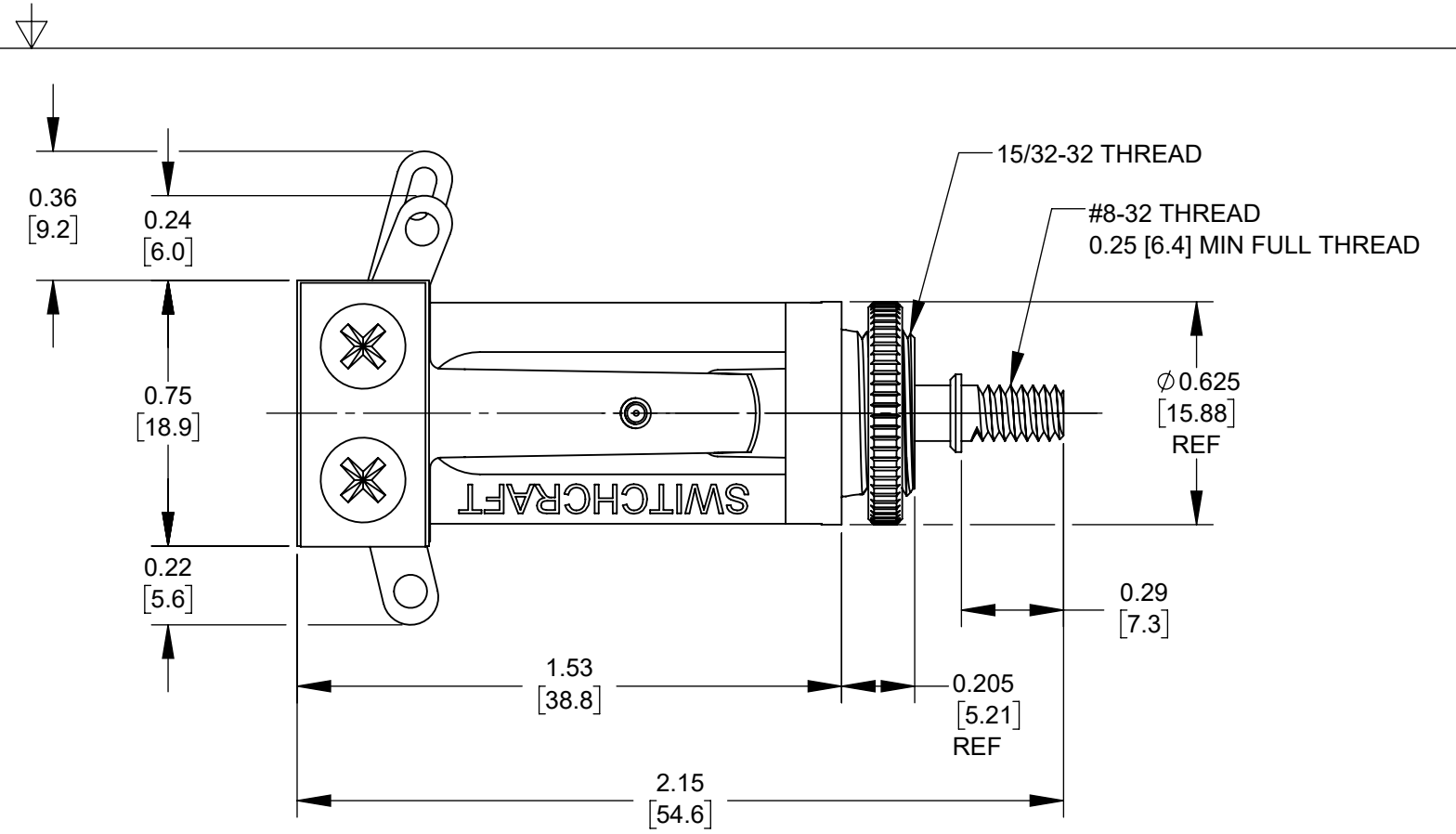
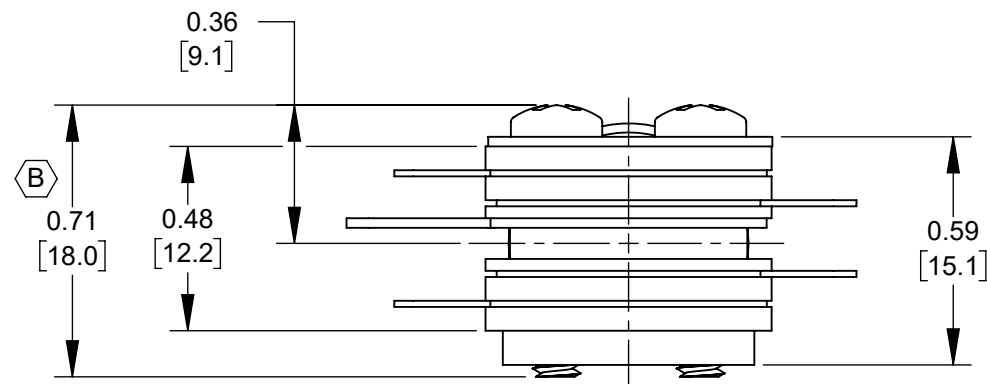


**SCHEMATIC**



**NOTES:**

1. MATERIALS:  
 FRAME, BUSHING, SHAFT- COPPER ALLOY, BARE  
 SHAFT INSULATOR - NYLON  
 PIN - STAINLESS STEEL  
 SPRINGS - SPRING TEMPERED, NICKEL SILVER  
 CONTACTS - FINE SILVER  
 SPACERS - PHENOLIC  
 TUBING - THERMOPLASTIC  
 PRESSURE PLATE - STEEL, NICKEL PLATED  
 TWIN NUT - STEEL, NICKEL PLATED  
 SCREWS - STEEL, NICKEL PLATED  
 HARDWARE:  
 KNURLED NUT - COPPER ALLOY, BARE
2. HARDWARE SHIPPED UNASSEMBLED.
3. THIS PRODUCT IS RoHS COMPLIANT.

**CUSTOMER DRAWING**

|           |            |          |    |      |  |               |       |       |              |                                 |  |
|-----------|------------|----------|----|------|--|---------------|-------|-------|--------------|---------------------------------|--|
|           |            |          |    |      | THIS DRAWING DESCRIBES A DESIGN CONSIDERED PROPRIETARY IN NATURE, DEVELOPED AND MANUFACTURED BY SWITCHCRAFT INC. AND IS RELEASED ON A CONFIDENTIAL BASIS FOR IDENTIFICATION PURPOSES ONLY. |               |       |       |              |                                 |  |
|           |            |          |    |      | UNLESS OTHERWISE SPECIFIED   | SIZE          | WIDTH | MULT  | LBS/M        | TEMPER                          |  |
|           |            |          |    |      | 1. ALL DIMENSIONS IN INCHES [mm]   | FINISH        |       |       |              | MATERIAL                        |  |
|           |            |          |    |      | - TWO PLACE DECIMALS ±0.02 [0.5]   | SPEC No.      |       |       |              | SPEC No.                        |  |
|           |            |          |    |      | - THREE PLACE DECIMALS ±0.005 [0.13]   | FIRST USED ON |       | SCALE |              | <b>Switchcraft</b> <sup>®</sup> |  |
|           |            |          |    |      |  |               | 2:1   |       |              |                                 |  |
| B         | 28409      | 07-09-21 | PC | TJK  | DATE DRAWN   | BY            | CHKD  | APVD  | SHEET 1 OF 1 |                                 |  |
| A         | 26240      | 02-23-07 | PC | TJK  | 07-23-20   | PC            | PC    | TJK   | PART No.     |                                 |  |
| REV       | ECO NUMBER | DATE     | BY | APVD | NAME 3 POSITION LOCKING LONG FRAME LEVER SWITCH, RoHS  |               |       |       | 12011X       | REV                             |  |
| REVISIONS |            |          |    |      | DO NOT SCALE DRAWING   |               |       |       |              | B                               |  |