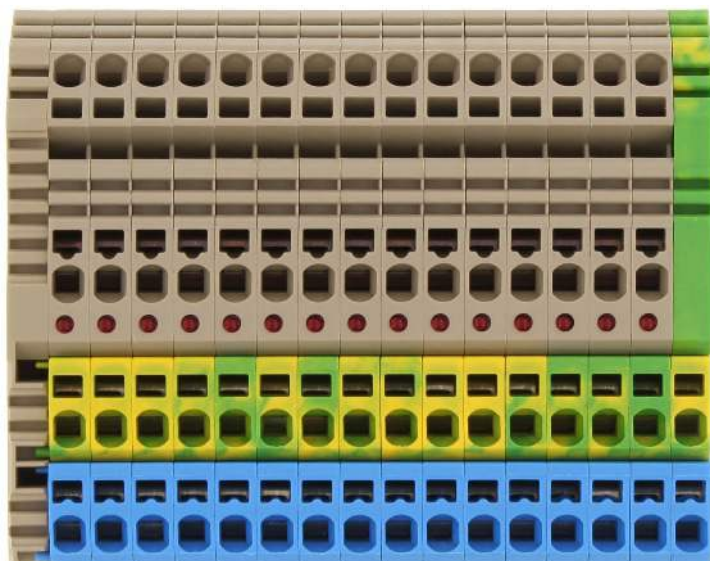


## 3555.2 ZIZA 1,5/3/16 POL/LED(RD)/24V/PE



Initiator terminal / actuator terminal, Tension-spring connection, Mounting type: Mounting rail TS 35/7.5, Rated cross-section: 1.5 mm<sup>2</sup>, Width: 91.8 mm, Colour: Multi-coloured

### Business data

Article number	3555.2
Article name	ZIZA 1,5/3/16 POL/LED(RD)/24V/PE
GTIN (EAN)	4044211058968
Packaging unit	1
Quantity unit	PC
Weight per piece (not including packaging)	6.4 g
Weight per piece (including packaging)	7 g
Unit of weight	G
Customs number	85369010
Country of origin	DE
Product description	Initiator terminals / actuator terminals
Colour	Multi-coloured

### Technical data

#### Dimensions

Length	68.7 mm
Width	91.8 mm
Height TS 35/7.5	40.5 mm
Pitch	5 mm

#### Ratings

Rated voltage	400 V
Rated current	17.5 A
Rated cross-section	1.5 mm <sup>2</sup>
Rated impulse voltage	4 kV
Overvoltage category	III
Contamination degree	3
Maximum power dissipation for nominal condition	0.56 W

#### Connection data

Connection principle	Tension-spring connection
Connections	4 per signal
Number of terminals per level	4
Number of levels	1
Wire cross-section single-core (rigid) / stranded, min.	0.5 mm <sup>2</sup>
Wire cross-section single core (rigid)/stranded, max.	2.5 mm <sup>2</sup>
Wire cross-section stranded, min.	0.5 mm <sup>2</sup>
Wire cross-section stranded, max.	2.5 mm <sup>2</sup>
Wire cross-section stranded with wire-end ferrules, min.	0.5 mm <sup>2</sup>
Wire cross-section stranded with wire-end ferrules, max.	1.5 mm <sup>2</sup>
Wire cross-section AWG, min.	26
Wire cross-section AWG, max.	14
Stripping length	8 mm

#### Materials

Insulation housing	Polyamide 6.6
Flammability class UL 94	V-0
Working temperature, min.	-40 °C
Working temperature, max.	120 °C

---

### Technical data

---

#### Further technical data

Mounting type	Mounting rail TS 35/7,5
Gauge plug acc. to EN 60 947-1	A1
Number of cross-connection channels	1
End plate required	✓
PE connection available	✓
Can be cross-connected	✓
Colour of lamp	Red

#### Environmental Product Compliance

REACH Conform	yes
REACH Reference date	2023-01-17
REACH Candidate Substance Note	No
RoHS Conform	yes

## 3555.2 ZIZA 1,5/3/16 POL/LED(RD)/24V/PE

### Approvals

#### CSA approval

CSA approval	C22.2 No 158
CSA approval granted	yes
CSA Usegroup C: rated voltage	300 V
CSA Usegroup C: rated current	12,5 A
CSA wire cross-section AWG, min.	26
CSA wire cross-section AWG, max.	14
CSA stripping length	8 mm

#### CSAus approval

CSAus approval	UL 1059
CSAus approval granted	yes
CSAus Usegroup C: rated voltage	300 V
CSAus Usegroup C: rated current	12,5 A
CSAus wire cross-section AWG, min.	26
CSAus wire cross-section AWG, max.	14
CSAus stripping length	8 mm

#### cUL Recognized

cUL approval	C22.2 No 158
cUL Usegroup C: rated voltage	300 V
cUL Usegroup C: rated current	12,5 A
cUL wire cross-section single-core (rigid) AWG, min.	26
cUL wire cross-section single-core (rigid) AWG, max.	14
cUL wire cross-section stranded AWG, min.	26
cUL wire cross-section stranded AWG, max.	14
cUL wire material	Cu
cUL Recognized	1

### Approvals

#### KEMA KEUR approval

KEMA KEUR approval	60947-7-1:2009, EN 60947-7-2:2009
KEMA KEUR approval granted	yes
KEMA rated voltage	400 V
KEMA rated current	17,5 A
KEMA rated impulse voltage	4 kV
KEMA wire cross-section single core (rigid), min.	0.5 mm <sup>2</sup>
KEMA wire cross-section single-core (rigid), max.	2.5 mm <sup>2</sup>
KEMA wire cross-section stranded, min.	0.5 mm <sup>2</sup>
KEMA wire cross-section stranded, max.	2.5 mm <sup>2</sup>

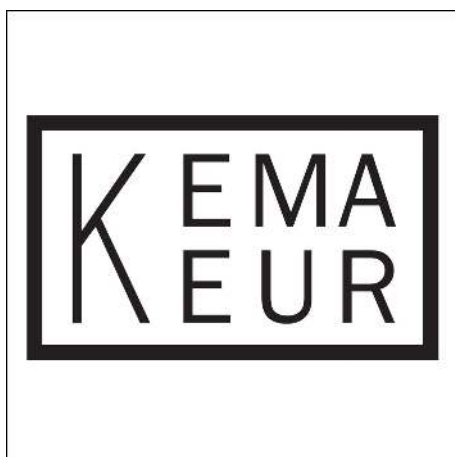
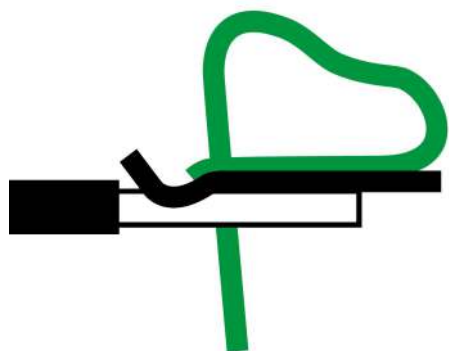
#### UL Recognized

UL approval	UL 1059
UL Usegroup C: rated voltage	300 V
UL Usegroup C: rated current	12,5 A
UL wire cross-section single-core (rigid) AWG, min.	26
UL wire cross-section single-core (rigid) AWG, max.	14
UL wire cross-section stranded AWG, min.	14
UL wire cross-section stranded AWG, max.	26
UL wire material	Cu
UL factory wiring	1
UL field wiring	1
UL Recognized	1

#### DNV GL Approval

DNV GL Certificate number	TAE00000Y9
DNV GL Location Classes	Temperature: B, Humidity: B, Vibration: A
DNV GL approval granted	1
DNV GL rated cross-section	1.5 mm <sup>2</sup>
DNV GL rated current	17,5 A
DNV GL rated voltage	400 V
DNV GL test standard	IEC 60947-7-1:2009, IEC 60947-7-2:2009
DNV GL wire cross-section single-core (rigid), max.	2.5 mm <sup>2</sup>
DNV GL wire cross-section stranded, max.	1.5 mm <sup>2</sup>

### Media



### Accessories

#### End stop



End stop, Mounting type: Mounting rail TS 35/7.5 and TS 35/15, Width: 6 mm, Colour: Beige

Article number	Article name	GTIN (EAN)	Packaging unit
<u>3748.2</u>	ZES 35 BG	4044211060572	50

#### Test adapter



Test adapter, Pitch size: 5.1 mm, Colour: Beige

Article number	Article name	GTIN (EAN)	Packaging unit
<u>17034.2</u>	ZTA 1,5	4044211155452	10 ST

#### Quick marking



Terminal marker / Pocket Maxicard, Length: 5 mm, Width: 5 mm, Colour: White

Article number	Article name	GTIN (EAN)	Packaging unit
<u>4600.7</u>	PMC SB 5/50 WH	4044211088903	500 ST

#### Reducing sleeves



Reducing sleeve, Width: 51 mm, Pitch size: 5.1 mm, Colour: Grey

Article number	Article name	GTIN (EAN)	Packaging unit
<u>3751.6</u>	ZRH 2,5/0,25-0,5 GR	4044211060602	1000 ST



Reducing sleeve, Width: 51 mm, Pitch size: 5.1 mm, Colour: White

Article number	Article name	GTIN (EAN)	Packaging unit
<u>3750.7</u>	ZRH 2,5/0,13-0,2 WH	4044211060596	1000 ST

## 3555.2 ZIZA 1,5/3/16 POL/LED(RD)/24V/PE

### Reducing sleeves

Reducing sleeve, Width: 51 mm, Pitch size: 5.1 mm, Colour: Black



Article number	Article name	GTIN (EAN)	Packaging unit
<u>3752.4</u>	ZRH 2,5/0,75-1,0 BK	4044211060619	1000 ST

### Screwdriver

Screwdriver with bare blade, Colour: Black-grey



Article number	Article name	GTIN (EAN)	Packaging unit
<u>1085.0</u>	SDB 0,5x3,0	4044211014643	1 ST