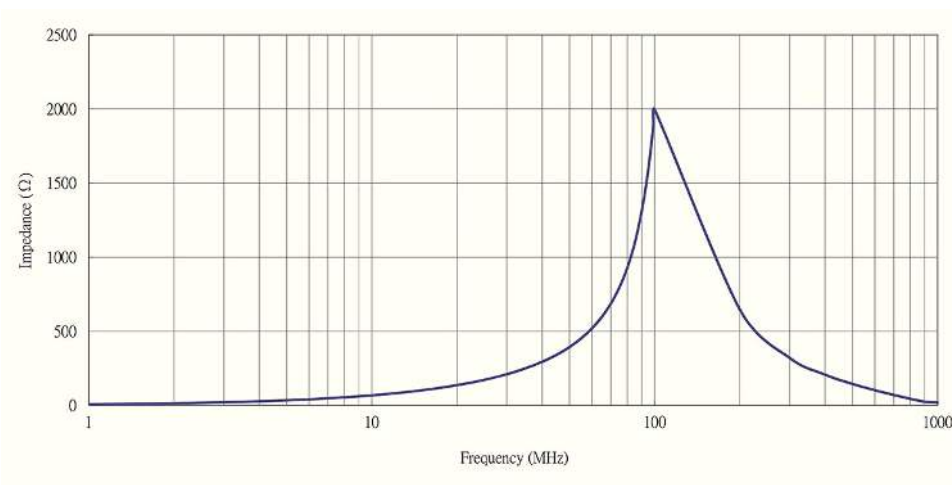


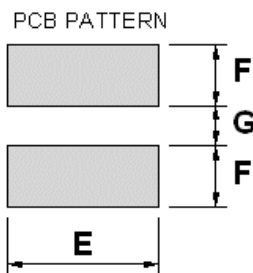
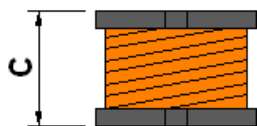
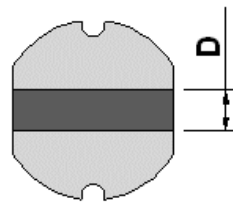
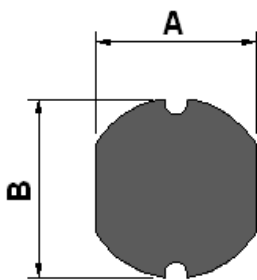
|                              |   |
|------------------------------|---|
| <b>Order Code</b>            | <b>TCK-078</b>                              |
| <b>Inductance</b>            | 1.1 $\mu$ H $\pm$ 20% (at 100 kHz / 250 mV) |
| <b>Impedance (DCR)</b>       | 15 m $\Omega$ max.                          |
| <b>Rated Current</b>         | 3.24 A max.                                 |
| <b>Operating Temperature</b> | -40°C to +125°C                             |
| <b>RoHS Exemptions</b>       | No Exemptions                               |



### Impedance Curve



### Outline Dimensions



| Dimensions [mm] |                |
|-----------------|----------------|
| <b>A</b>        | 5.2 $\pm$ 0.5  |
| <b>B</b>        | 5.8 $\pm$ 0.5  |
| <b>C</b>        | 4.5 $\pm$ 0.55 |
| <b>D</b>        | 2.3 typ.       |
| <b>E</b>        | 5.5            |
| <b>F</b>        | 2.15           |
| <b>G</b>        | 1.7            |

All specifications valid at +25°C, unless otherwise stated.