

4

3

2

1

THIS DRAWING IS UNPUBLISHED.

RELEASED FOR PUBLICATION

© COPYRIGHT

ALL RIGHTS RESERVED.

LOC DIST

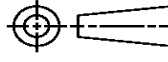
REVISIONS

P	LTR	DESCRIPTION	DATE	DWN	APVD
	M1	ECR-16-011294	06AUG2016	GK	SD

# REPLACED BY OCEAN STYLE APPLICATOR PART NUMBER 2836352-2

FOR REPLACEMENT PARTS FOR APPLICATOR 1238067  
REFER TO ADDITIONAL PAGE(S). SPARE PARTS KIT (IF LISTED)  
WILL REMAIN AVAILABLE.

THE REPLACEMENT OCEAN STYLE APPLICATOR HAS THE  
SAME TERMINATOR/PRESS INTERFACE AS APPLICATOR  
1238067

THIS DRAWING IS A CONTROLLED DOCUMENT.		DWN	GOPALAKRISHNA HV		
DIMENSIONS:		CHK	GOPALAKRISHNA HV		
		TOLERANCES UNLESS OTHERWISE SPECIFIED:		APVD	
		0 PLC ± 1 PLC ± 2 PLC ± 3 PLC ± 4 PLC ± ANGLES ±		STOUGH DALE	
MATERIAL		PRODUCT SPEC		NAME	
FINISH		APPLICATION SPEC		SIDE FEED HD-I APPLICATOR	
		WEIGHT	SIZE	CAGE CODE	DRAWING NO
			A3		©- 1238067
		CUSTOMER DRAWING		SCALE	SHEET 1 OF 2 REV M1



THIS DRAWING IS UNPUBLISHED. RELEASED FOR PUBLICATION  
 © COPYRIGHT BY TYCO ELECTRONICS CORPORATION. ALL RIGHTS RESERVED.

LOC	DIST	REVISIONS			
P	LTR	DESCRIPTION	DATE	DWN	APVD
A	66	M	ECR-14-017130	11-2014	RS LZ

PART NUMBER	REV	FIRST USED	TERMINATOR	FEED TYPE	DESCRIPTION
1238067-1	M	-	LEADMAKER	MECH POST FEED	CUTS CARRIER
1238067-2	M	-	BENCH	MECH PRE FEED	CUTS CARRIER
1238067-6	M	-	LEADMAKER	MECH POST FEED	CONTINUOUS CARRIER
7-1238067-1	M	-	LEADMAKER	MECH POST FEED	-1 AND SPARE PARTS
7-1238067-2	M	-	BENCH	MECH PRE FEED	-2 AND SPARE PARTS
7-1238067-6	M	-	LEADMAKER	MECH POST FEED	-6 AND SPARE PARTS
7-1238067-7	J	-	-	-	SPARE PARTS KIT

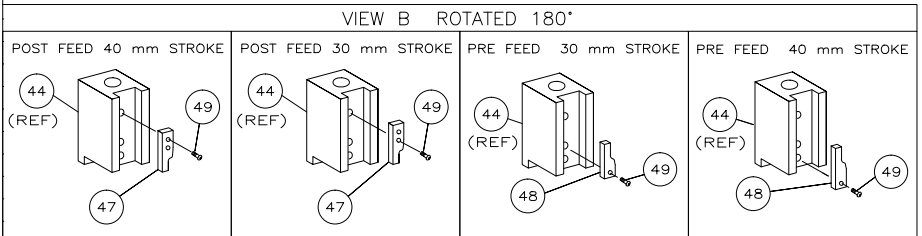
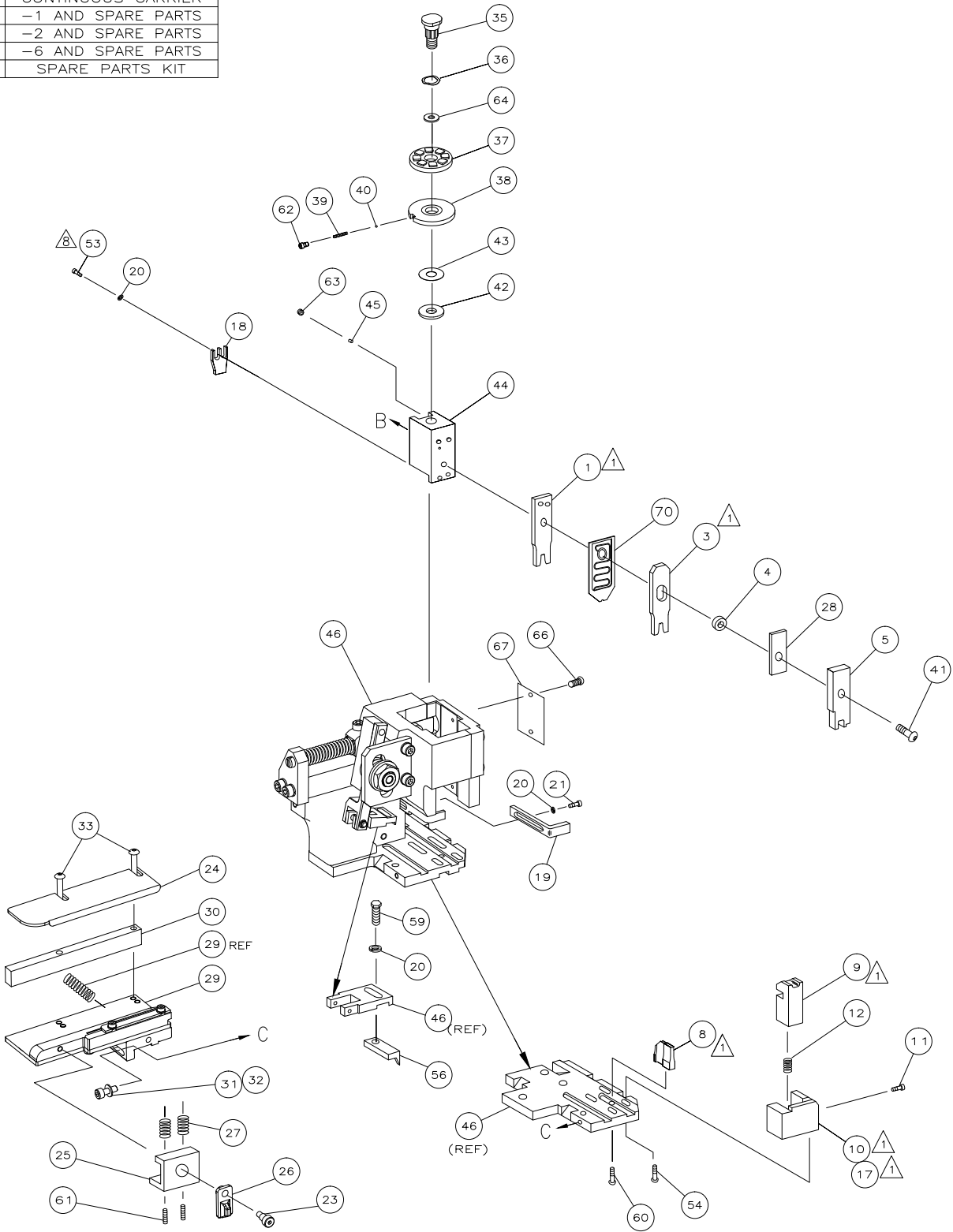
CRIMP DATA AMP TERMINAL AMP CRIMP SPECS			
TERMINAL NAME: 2.5MM PITCH HPI CONTACT			
CRIMP	SIZE	TYPE	RANGE
WIRE	1.40 [.055 IN]	F	0.08mm <sup>2</sup> -0.30mm <sup>2</sup>
INSUL	1.78 [.070 IN]	F	Ø1.0-1.9 [.039-.075 IN]
WIRE STRIP LENGTH	1.9-2.5 [.075-.098 IN]	APPL INSTRUCTION 408-8322	

TERMINALS APPLIED				
AMP PN	MFR PN	-	-	-
440134	-	-	-	-
-	-	-	-	-
-	-	-	-	-
-	-	-	-	-
-	-	-	-	-
-	-	-	-	-
-	-	-	-	-
-	-	-	-	-

WIRE SIZE mm <sup>2</sup> AWG	CRIMP HEIGHT	PIN PN & LENGTH [IN]
0.30mm <sup>2</sup>	0.75 ±0.05 [.030 ±.002 IN]	5-354779-6 [.3270]
0.22mm <sup>2</sup>	0.70 ±0.05 [.028 ±.002 IN]	6-354779-0 [.3290]
0.14mm <sup>2</sup>	0.65 ±0.05 [.026 ±.002 IN]	6-354779-4 [.3310]
0.08mm <sup>2</sup>	0.60-0.65 [.024-.026 IN]	6-354779-6 [.3320]

SET UP GAGE 458637-3	LAYOUT L2499
----------------------	--------------

- 1. RECOMMENDED SPARE PARTS.
- 2. GREASE RAM, CAM, CAM FOLLOWER AND FEED ROD LIGHTLY.
- 3. LUBRICATE DAILY PER THE APPLICATOR INSTRUCTION SHEET SUPPLIED WITH THE APPLICATOR.



QTY	REQD	PER	ASSY	PART NO	DESCRIPTION	ITEM NO			
-	1	1	1	1	1	1	1238067	PRINT, APPLICATOR LOG SHEET	73
-	1	1	1	1	1	1	1338705-1	DOCUMENTATION PACKAGE	71
-	1	1	1	1	1	1	2119791-5	SPACER, DEPRESSOR (WIRE DP)	70
-	-	-	-	-	-	-	-	-	69
-	-	-	-	-	-	-	-	-	68
-	1	1	1	1	1	1	461264-1	PLATE, IDENTIFICATION	67
-	2	2	2	2	2	2	21017-2	SCR,DRIVE(#2x.19)ID PLATE	66
-	-	-	-	-	-	-	-	-	65
-	1	1	1	1	1	1	986950-1	WASHER, FLAT PRECISION	64
-	1	1	1	1	1	1	3-18031-0	SCR,SKT SET(M6X6)RAM	63
-	1	1	1	1	1	1	18023-9	SCR,SHC(M4X6)INS DISC	62
-	2	2	2	2	2	2	2-18032-5	SCR,SET(M5X20)DRAG	61
-	1	1	1	1	1	1	18024-7	SCR,BHC(M4X10)ANVIL	60
-	1	1	1	1	1	1	5-18022-2	SCR,HEX(M4X8)FEED FINGER	59
-	-	-	-	-	-	-	-	-	58
-	-	-	-	-	-	-	-	-	57
-	1	1	1	1	1	1	1338685-1	PAWL, FEED	56
-	-	-	-	-	-	-	-	-	55
-	2	2	2	2	2	2	18024-8	SCR,BHC(M4x12)SHEAR HOLDER	54
-	2	2	2	2	2	2	18023-8	SCR,SHC(M4x5)TERM HLD DWN	53
-	-	-	-	-	-	-	-	-	52
-	-	-	-	-	-	-	-	-	51
-	-	-	-	-	-	-	-	-	50
-	1	1	1	1	1	1	18024-3	SCR,BHC(M3X10)CAM	49
-	-	-	-	-	-	-	-	-	48
-	-	-	-	-	-	-	-	-	47
-	1	1	1	1	1	1	1338676-1	CAM, POST FEED 30 & 40 mm ST	47
-	1	1	1	1	1	1	1320999-3	APPLICATOR BASIC SUBASSY	46
-	1	1	1	1	1	1	690191-1	PLUG, NYLON	45
-	1	1	1	1	1	1	1338660-3	RAM	44
-	1	1	1	1	1	1	690125-1	WASHER, LAMINATED	43
-	1	1	1	1	1	1	1-690124-3	WASHER, RAM	42
-	1	1	1	1	1	1	2-18024-6	SCR,BHC(M8X25)RAM	41
-	1	1	1	1	1	1	23241-1	BALL, STEEL	40
-	1	1	1	1	1	1	2-22278-7	SPRING, COMPRESSION	39
-	1	1	1	1	1	1	1320922-3	DISC, INSULATION	38
-	1	1	1	1	1	1	354777-1	WIRE DISC, PLASTIC	37
-	1	1	1	1	1	1	22480-5	WASHER, SPRING	36
-	1	1	1	1	1	1	690212-1	POST, RAM	35
-	-	-	-	-	-	-	-	-	34
-	2	2	2	2	2	2	18024-9	SCR,BHC(M4X16)STRIP GUIDE	33
-	1	1	1	1	1	1	18027-2	WASHER, FLAT(M4)	32
-	1	1	1	1	1	1	1-18023-2	SCR,SKT CAP(M4X12)MOUNT BLOCK	31
-	1	1	1	1	1	1	1320908-4	SPACER, STRIP GUIDE	30
-	1	1	1	1	1	1	1633073-3	STRIP GUIDE PLATE ASSY	29
-	1	1	1	1	1	1	1-455888-0	SPACER, FRONT SHEAR DEP	28
-	2	2	2	2	2	2	1-22284-0	SPRING, DRAG	27
-	1	1	1	1	1	1	356835-1	LEVER, DRAG RELEASE	26
-	1	1	1	1	1	1	240792-1	DRAG, TERMINAL	25
-	1	1	1	1	1	1	1320928-1	PLATE, STRIP GUIDE	24
-	1	1	1	1	1	1	980371-4	SCR,SHC SHLD	23
-	-	-	-	-	-	-	-	-	22
-	1	1	1	1	1	1	1-18023-1	SCR,SHC(M4X10)STRIPPER	21
-	4	4	4	4	4	4	18025-2	WASHER,LOCK(M4)STRIPPER	20
-	1	1	1	1	1	1	1-1338987-3	STRIPPER	19
-	1	1	1	1	1	1	2-690518-4	HOLDER, TERMINAL	18
-	1	-	-	-	-	-	1338684-1	HOLDER, SHEAR, FRONT (NO-CUT)	17
-	-	-	-	-	-	-	-	-	16
-	-	-	-	-	-	-	-	-	15
-	-	-	-	-	-	-	-	-	14
-	-	-	-	-	-	-	-	-	13
-	1	1	1	1	1	1	3-22280-3	SPRING, SHEAR	12
-	1	1	1	1	1	1	356885-4	STOP, SHEAR	11
-	-	-	-	-	-	-	-	-	10
-	1	1	1	1	1	1	1320921-1	HOLDER, SHEAR, FRONT (CUT)	10
-	1	1	1	1	1	1	462006-1	SHEAR, FLOAT (FRONT)	9
-	1	2	2	2	1	1	1338690-7	ANVIL	8
-	-	-	-	-	-	-	-	-	7
-	-	-	-	-	-	-	-	-	6
-	1	1	1	1	1	1	2-455889-9	DEPRESSOR, SHEAR (FRONT)	5
-	1	1	1	1	1	1	2-238011-8	SPACER, BLOCK CRIMPER	4
-	1	2	2	2	1	1	4-1213077-6	CRIMPER, INSULATION	3
-	-	-	-	-	-	-	-	-	2
-	1	2	2	2	1	1	5-456402-3	CRIMPER, WIRE	1

DIMENSIONS:		TOLERANCES UNLESS OTHERWISE SPECIFIED:		APPLICATOR SPEC		PRODUCT SPEC	
INCHES		3 PLC	± .005	APPL		SIZE	00779
		1 PLC	± .005	WEIGHT		CAGE CODE	1238067
		2 PLC	± 0.5 [02 IN]			DRAWING NO	
		3 PLC	± .005			RESTRICTED TO	
		4 PLC	± .005				
		ANGLES	± .005				
		FINISH					