

4

3

2


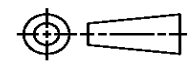
1

THIS DRAWING IS UNPUBLISHED. RELEASED FOR PUBLICATION  
© COPYRIGHT ALL RIGHTS RESERVED.

LOC		DIST		REVISIONS			
P	LTR	DESCRIPTION		DATE	DWN	APVD	
	B1	ECR-16-001562		2FEB2016	RS	UG	

THIS PART NUMBER IS OBSOLETE (NO LONGER ACTIVE OR PRODUCED).  
 THE CUSTOMER SHOULD CONTACT THEIR SALES REPRESENTATIVE OR TAC  
 TO IDENTIFY THE APPLICATOR THAT WILL PROCESS THE TERMINAL TO BE APPLIED.  
 IF ONE DOES NOT EXIST, A REQUEST TO QUOTE A NEW APPLICATOR WILL NEED TO  
 BE PROCESSED.

FOR REPLACEMENT PARTS FOR APPLICATOR 1529174  
 REFER TO ADDITIONAL PAGE(S). SPARE PARTS KIT (IF LISTED)  
 WILL REMAIN AVAILABLE.

THIS DRAWING IS A CONTROLLED DOCUMENT.		DWN R.SHEN	 <b>TE Connectivity</b>		
DIMENSIONS:		CHK LJ.ZHANG			
		APVD U.GUO	NAME FINE ADJ END FD HD-I APPL		
TOLERANCES UNLESS OTHERWISE SPECIFIED:		PRODUCT SPEC	DRAWING NO C- 1529174		
0 PLC ± 1 PLC ± 2 PLC ± 3 PLC ± 4 PLC ± ANGLES ±		APPLICATION SPEC	SIZE A3	CAGE CODE	RESTRICTED TO
MATERIAL	FINISH	WEIGHT	SCALE		
		CUSTOMER DRAWING		SHEET 1 OF 2	REV B1

DRAWING MADE IN THIRD ANGLE PROJECTION

1529174 1529174

PART NUMBER	REV	FIRST USED	TERMINATOR	FEED TYPE	DESCRIPTION
1529174-1	B		BENCH & LEADMAKER	MECH POST FEED	HD-I APPLICATOR
7-1529174-1	B		BENCH & LEADMAKER	MECH POST FEED	-1 AND SPARE PARTS
7-1529174-7	B		-	-	SPARE PARTS KIT

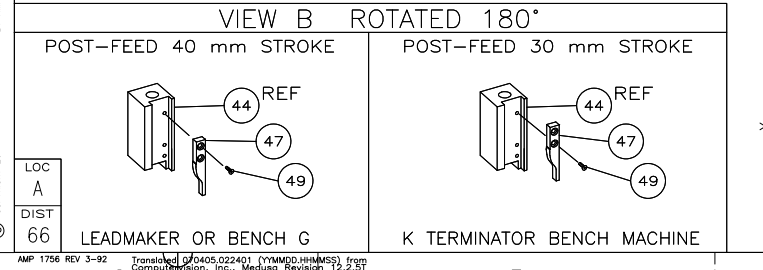
CRIMP DATA GHW TERMINAL AMP CRIMP SPECS			
TERMINAL NAME: 6.3 FASTON TYPE RECEPTACLE			
CRIMP	SIZE	TYPE	RANGE
WIRE	2.29 [.090 IN]	F	0.50mm <sup>2</sup> - 1.00mm <sup>2</sup>
INSUL	3.94 [.155 IN]	F	1.60-3.20 [.063-.126 IN]
WIRE STRIP LENGTH		APPL INSTRUCTION	
5.30-6.10 [.209-.240 IN]		408-8323 & 408-8490	

TERMINAL	FEED
APPL SPEC	21.50 [.846 IN]

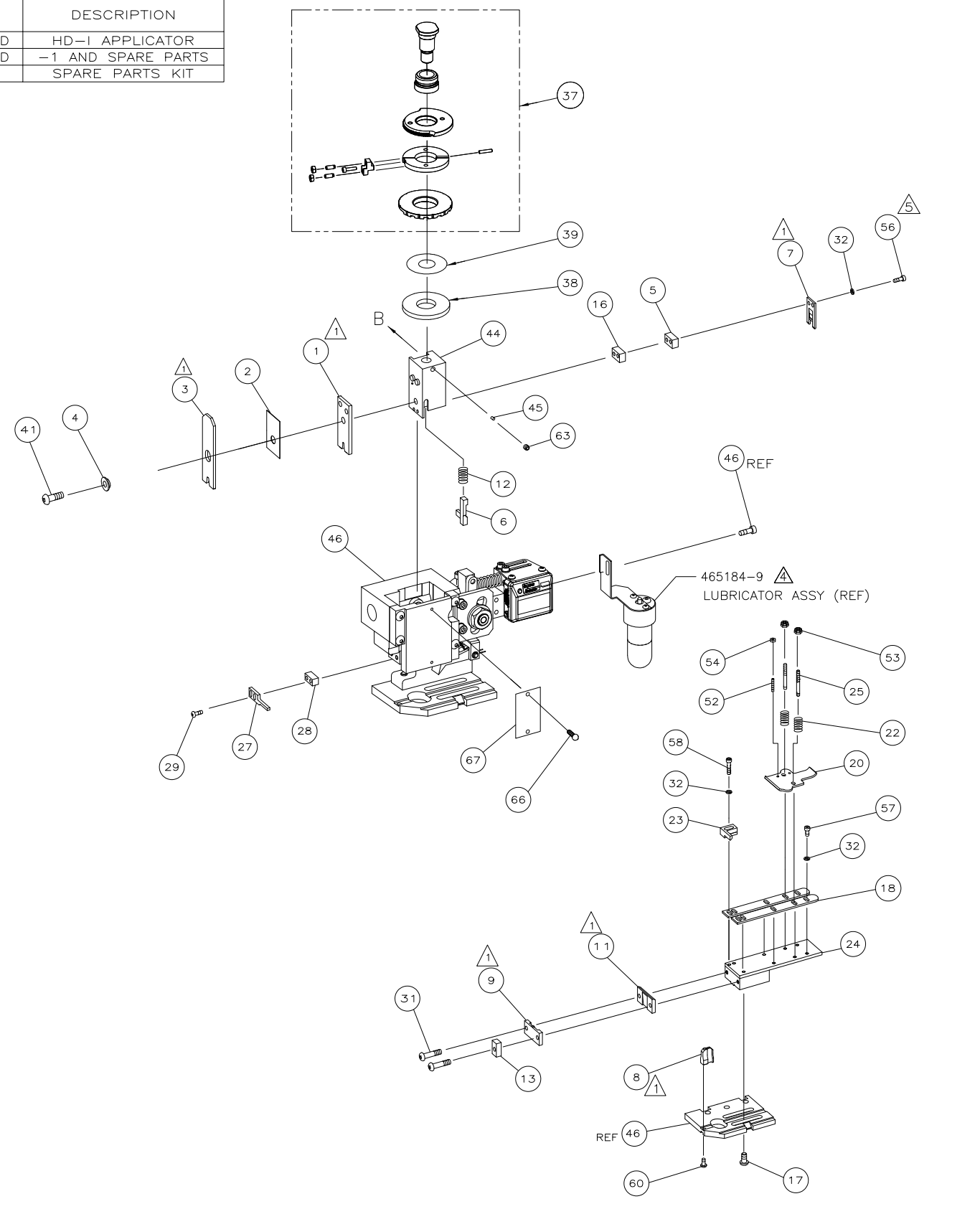
TERMINALS APPLIED				
AMP PN	MFR PN			
1572910-1	25722.123.204	-	-	-
1572910-2	25722.201.004	-	-	-
1572910-3	25722.123.211	-	-	-
1572910-4	25722.201.011	-	-	-
1572910-5	25722.417.031	-	-	-

WIRE SIZE mm <sup>2</sup> AWG	CRIMP HEIGHT *	REF SETTING
1.00mm <sup>2</sup>	1.60 ±0.05 [.063 ±.002 IN]	C8
0.75mm <sup>2</sup>	1.50 ±0.05 [.059 ±.002 IN]	D6
0.50mm <sup>2</sup>	1.42 ±0.05 [.056 ±.002 IN]	E1

- 1 RECOMMENDED SPARE PARTS.
- 2. GREASE RAM, CAM, CAM FOLLOWER AND FEED ROD LIGHTLY.
- 3. LUBRICATE DAILY PER THE APPLICATOR INSTRUCTION SHEET SUPPLIED WITH THE APPLICATOR.
- 4 CERTAIN TERMINALS REQUIRE LUBRICATION. REFER TO THE APPLICATOR INSTRUCTION SHEET FOR MORE INFORMATION.
- △ CUT TO LENGTH AT ASSEMBLY.
- △ ALL CRIMP DATA CALCULATED BY TYCO ELECTRONICS UK LTD.
- △ INSULATION RANGE SHOWN IS THAT OF THE APPLICATOR.



\* WARNING:  
ON INSTALLATION, SET WIRE DISC TO LARGEST WIRE SIZE SETTING. USE OF SETTINGS BELOW MIN REQ'D CRIMP HEIGHT SETTING WILL CAUSE DAMAGE TO CRIMP TOOLING.



QTY	REQD	PER ASSY	PART NO	DESCRIPTION	ITEM NO	
-	1	1	1529174	PRINT, APPLICATOR LOG SHEET	73	
-	1	1	1338705-4	DOCUMENTATION PACKAGE	72	
-	-	-	-	-	71	
-	-	-	-	-	70	
-	-	-	-	-	69	
-	-	-	-	-	68	
-	1	1	461264-5	PLATE, IDENTIFICATION	67	
-	2	2	21017-2	SCR,DRIVE(#2X.19)ID PLATE	66	
-	-	-	-	-	65	
-	-	-	-	-	64	
-	1	1	3-18031-0	SCR,SKT SET(M6X6)RAM	63	
-	-	-	-	-	62	
-	-	-	-	-	61	
-	1	1	18024-7	SCR,BHC(M4X10)ANVIL	60	
-	-	-	-	-	59	
-	2	2	1-18023-3	SCR,SHC(M4X16)HOLD DOWN	58	
-	5	5	18023-9	SCR,SHC(M4X6)STRIP GUIDE	57	
-	2	2	9-18023-6	SCR,SHC(M4X14)SLUG BLADE	56	
-	-	-	-	-	55	
-	2	2	18029-1	NUT,HEX(M3)DRAG	54	
-	2	2	986965-1	NUT,HEX SL(M4)DRAG STUD	53	
-	2	2	2-18032-2	SCR,SKT SET(M3X10)DRAG	52	
-	-	-	-	-	51	
-	-	-	-	-	50	
-	1	1	18024-3	SCR,BHC(M3X10)CAM	49	
-	-	-	-	-	48	
-	1	1	1338676-1	CAM, POST-FEED 30 & 40 mm ST	47	
-	1	1	1338662-1	APPLICATOR, BASIC (SUBASSY)	46	
-	1	1	690191-1	PLUG, NYLON	45	
-	1	1	1320998-1	RAM	44	
-	-	-	-	-	43	
-	-	-	-	-	42	
-	1	1	2-18024-6	SCREW,BHC(M8X25)CRIMPER	41	
-	-	-	-	-	40	
-	1	1	690125-1	SHIM SUBASSY	39	
-	1	1	469367-1	SPACER, LUBRIC ADJUST	38	
-	1	1	879103-2	FINE ADJUST HEAD SUBASSY	37	
-	-	-	-	-	36	
-	-	-	-	-	35	
-	-	-	-	-	34	
-	-	-	-	-	33	
-	9	9	18025-2	WASHER,LOCK(M4)SHEAR BL	32	
-	2	2	1-18024-0	SCR,BHC(M4X20)SHEAR PL	31	
-	-	-	-	-	30	
-	2	2	18024-8	SCR,BHC(M4X12)STRIPPER	29	
-	1	1	3-690451-2	SPACER, STRIPPER	28	
-	1	1	240639-1	STRIPPER	27	
-	-	-	-	-	26	
-	2	2	1320906-1	DRAG, STUD	25	
-	1	1	1320995-1	PLATE, STRIP GUIDE	24	
-	1	1	240825-3	PLATE, STRIP HOLD DOWN	23	
-	2	2	4-22281-1	SPRING, DRAG	22	
-	-	-	-	-	21	
-	1	1	1338665-1	DRAG, STOCK	20	
-	-	-	-	-	19	
-	2	2	1338663-7	GUIDE, LOWER STRIP	18	
-	4	4	1-18024-8	SCR,BHC(M6X12)STRIP GD PL	17	
-	1	1	1338708-1	SPACER, SLUG BLADE	16	
-	-	-	-	-	15	
-	-	-	-	-	14	
-	1	1	690481-7	SPACER, HOLD DOWN	13	
-	1	1	23846-1	SPRING, HOLD DOWN	12	
-	1	1	240644-1	PLATE, REAR SHEAR	11	
-	-	-	-	-	10	
-	1	1	690482-4	PLATE, FRONT SHEAR	9	
-	1	2	1	5-1333217-2	ANVIL	8
-	1	1	690474-4	BLADE, SLUG	7	
-	1	1	1-455892-1	HOLD DOWN, TERMINAL	6	
-	1	1	2-240641-4	SPACER, SLUG BLADE	5	
-	1	1	238009-1	SPACER, BLOCK CRIMPER	4	
-	1	2	1	1-1424909-0	CRIMPER, INSULATION	3
-	1	1	1-455888-1	SPACER, CRIMPER	2	
-	1	2	1	6-456406-2	CRIMPER, WIRE	1

QTY REQD PER ASSY

REVISION OF EACH ASSY NO (WHEN BLANK, USE DWG REVISION)

PARTS LIST

DIMENSIONS: mm [INCHES] MATL - HT TR - FIN -  
DO NOT SCALE PRINT.  
TOLERANCES UNLESS OTHERWISE SPECIFIED:  
1 PLC DEC ± -  
2 PLC DEC ± -  
3 PLC DEC ± -  
ANGLES ± -  
SURF TEXTURE: ✓  
REMOVE BURRS, BREAK SHARP EDGES R0.38 MAX

DR L.LOFTHOUSE 09JAN06 APP F.BACKHURST 09JAN06  
CHK - REL 28-02-06 M.CLIFFORD

NAME FINE ADJ END FD HD-I APPL MACHINE REF HD-I APPL  
SCALE - DWG NO 1529174 SHEET 1 OF 1 REV B

00779 CUSTOMER AND ASSEMBLY DRAWING RESTRICTED TO

THIS DRAWING IS A CONTROLLED DOCUMENT.

LAYOUT L1529174  
SET UP GAGE 458636-3

THIS DRAWING IS UNPUBLISHED.  
BY AMP INCORPORATED. ALL RIGHTS RESERVED.  
© COPYRIGHT 2006