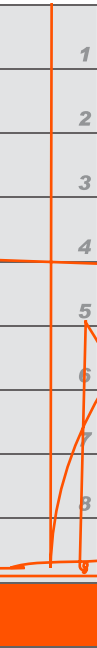


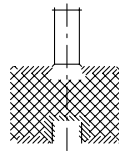
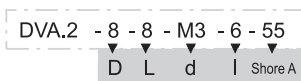


STANDARD EXECUTIONS

- DVA.2: bushing with threaded blind hole, threaded stud and base



* Comp the desired hardness:
40, 55 or 70 tolerance ±5 Shore A.



Conversion Table
1 mm = 0.039 inch

D		L	
mm	inch	mm	inch
6	0.23	50	1.97
8	0.31	60	2.36
10	0.39	70	2.76
15	0.59	75	2.95
20	0.79	80	3.12
25	0.98	100	3.94
30	1.18	125	4.92
40	1.57	125	4.92

DVA.2



Hardness 40 Shore A

Hardness 55 Shore A

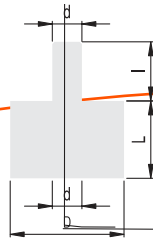
Hardness 70 Shore A

Description	D	L	d	l	h	△	Code	Max load [N]		Hardness 40 Shore A		Hardness 55 Shore A		Hardness 70 Shore A				
								Max	Min	Max	Min	Max	Min					
DVA.2-8-8-M3-6-*	8	8	M3	6	3	1	414301	34	2	19	411681	265	2	151	417000	628	2	359
DVA.2-8-13-M3-6-*	8	13	M3	6	3	2	414303	38	3	12	411703	70	3	21	417003	145	3	45
DVA.2-10-10-M4-10-*	10	10	M4	10	4	2	414311	75	3	30	411721	100	3	40	417011	200	3	80
DVA.2-10-15-M4-10-*	10	15	M4	10	4	3	414321	65	4	17	411731	100	4	27	417021	150	4	40
DVA.2-10-20-M4-10-*	10	20	M4	10	4	3	414323	59	5	12	411733	93	5	19	417023	132	5	26
DVA.2-15-10-M4-10-*	15	10	M4	10	4	5	414331	210	2	105	411741	325	2	163	417031	717	2	359
DVA.2-15-15-M4-10-*	15	15	M4	10	4	6	414341	155	4	41	411761	280	4	75	417041	513	4	137
DVA.2-15-20-M4-10-*	15	20	M4	10	4	7	414351	151	5	30	411771	234	5	47	417051	468	5	94
DVA.2-15-25-M4-10-*	15	25	M4	10	4	8	414353	133	6	21	411773	234	6	37	417053	505	6	81
DVA.2-15-30-M4-10-*	15	30	M4	10	4	10	414355	149	7.5	20	411776	215	7.5	29	417056	460	7.5	61

Vibration damping elements

METRIC

K.2-SST



METRIC

