

Packing List

In addition to this guide, the package includes the following items:



I-7540D-MTCP
I-7540DM-MTCP



Plastic Rail



Screw Driver



CA-0910

Technical Support

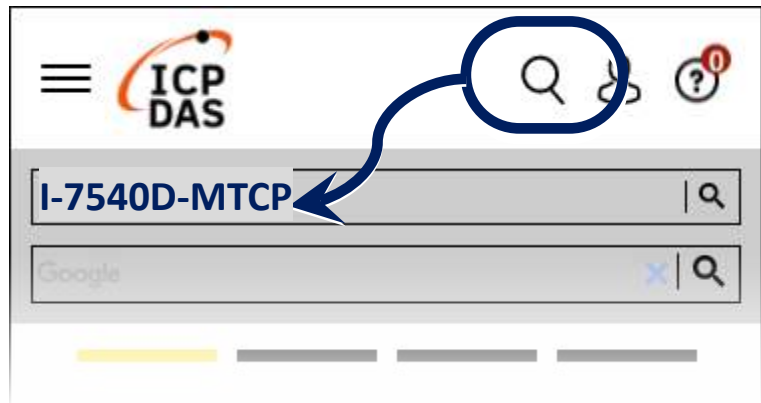
service@icpdas.com

www.icpdas.com

Resources

How to search for drivers, manuals and spec information on ICP DAS website.

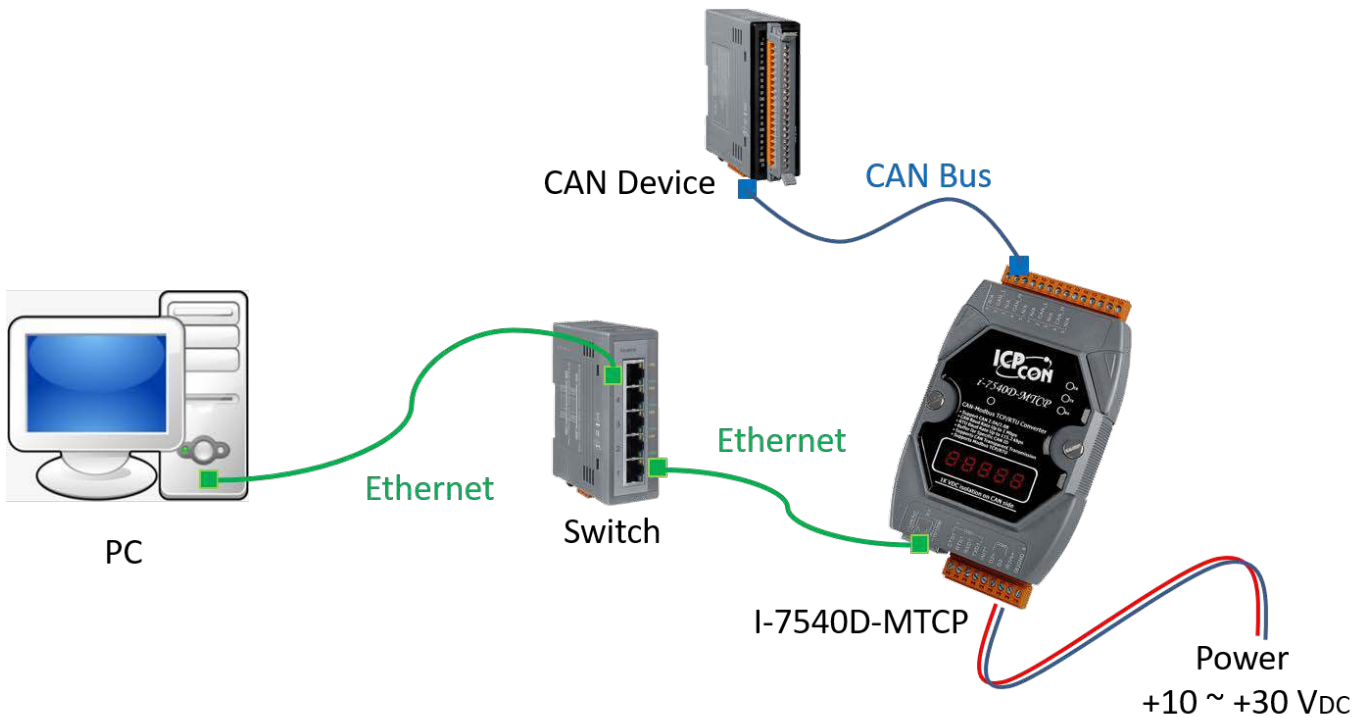
- For Mobile Web



- For Desktop Web

1 Connect to PC, Internet, IED and Power

- Step1. Connect PC and I-7540D(M)-MTCP with Ethernet switch.
- Step2. Connect CAN port of I-7540D(M)-MTCP to CAN device.
- Step3. Provide +10 ~ +30 V_{DC} power to I-7540D(M)-MTCP.



I-7540D(M)-MTCP default IP information :

IP: 192.168.255.1
Gateway: 192.168.0.1
Mask: 255.255.0.0

2 Download I-7540D-MTCP Utility

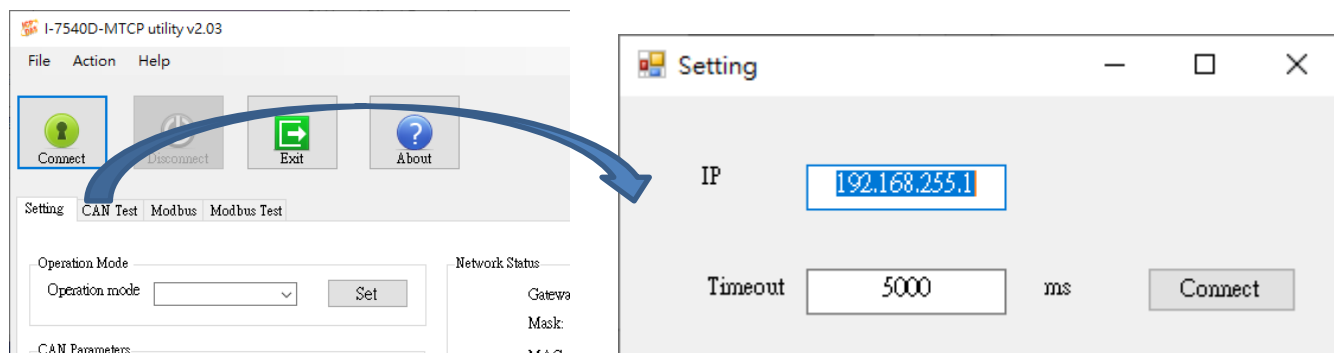
Utility download link:

<https://www.icpdas.com/en/download/show.php?num=926&model=I-7540D-MTCP-G>

The utility file name is I7540D-MTCP_vx.xx.exe (vx.xx is version number). The utility execute file can be executed directly.

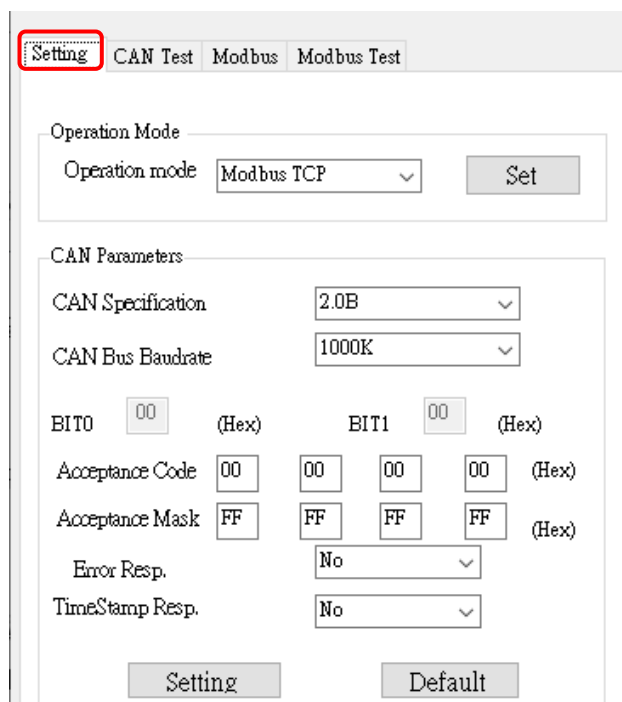
 I7540D-MTCP_v2.03.exe

3 I7540D-MTCP Utility Connection



Click Connect icon to open connection dialog. Input IP address of I-7540D(M)-MTCP and then click “Connect” button to connect with I-7540D(M)-MTCP.

4 Configure I-7540D(M)-MTCP



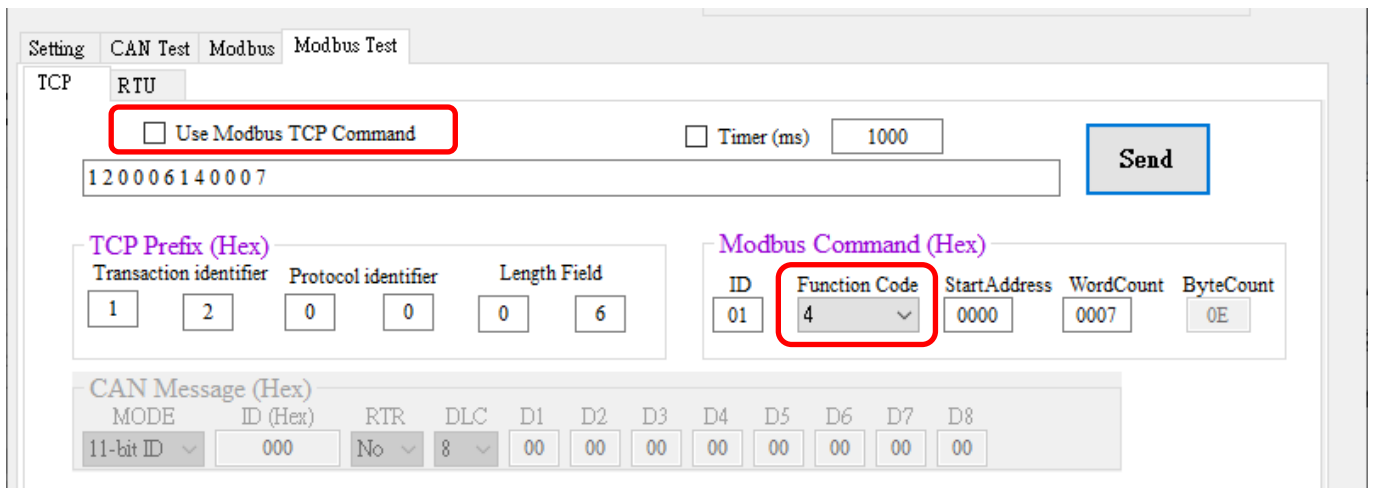
After connect to I-7540D(M)-MTCP, please select to “Setting” page and set “CAN Specification” and “CAN Bus Baudrate” to suitable the CAN device that connected to I-7540D(M)-MTCP.

After then, click “Setting” button to save settings to I-7540D(M)-MTCP.

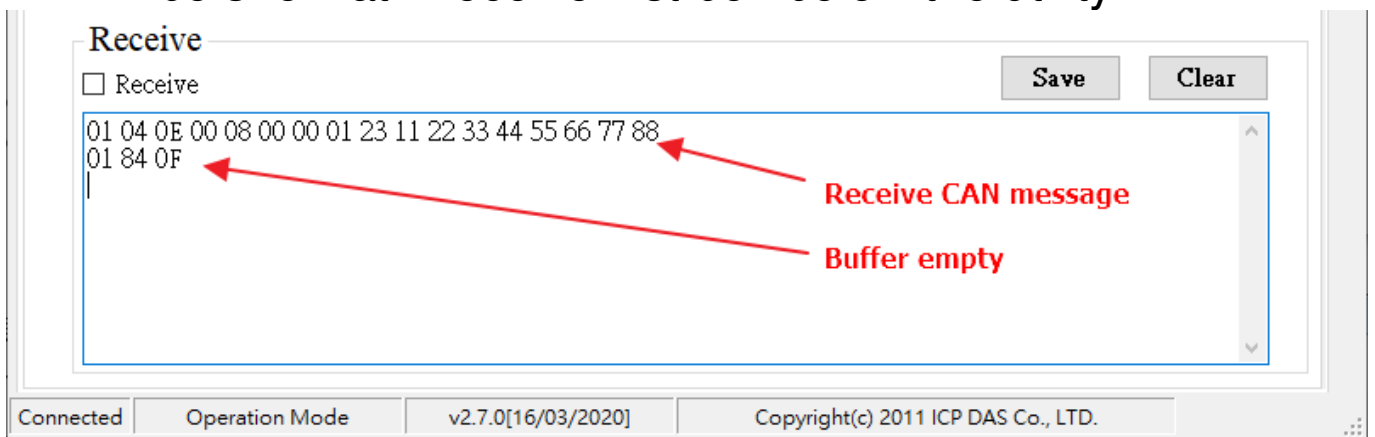
When the utility shows “Setting O.K.”, Close the utility and reboot the I-7540D(M)-MTCP.

5 Communication Test

- Step1. Open utility and re-connect to I-7540D(M)-MTCP.
- Step2. Select “Modbus Test” page prepare to communicate test.
- Step3. Check the “Use Modbus TCP Command” item, select function code 4, then click “Send” button to send the Modbus read command



Step4. If I-7540D(M)-MTCP had received CAN message, it will be show at “Receive” list box below the utility.



Step5. Select function code 16 and fill in CAN message that want be send. The I-7540D(M)-MTCP will send the CAN message after click “Send” button.

