



## 2.4S7SIC\_151505D6UP

2.4W - Dual Output - Wide Input - Isolated & Unregulated  
DC-DC module power supply specialized for SiC driver

### DC-DC Converter

2.4 Watt

-  Efficiency up to 80%
-  Temperature range: -40°C~+105°C
-  Dual Output Voltage
-  6000VDC isolation
-  Short circuit protection (SCP)
-  Industry standard pinout
-  Output over-voltage protection
-  RoHS Compliance

The 2.4S7SIC\_151505D6UP is a DC-DC module power supply designed for SiC drivers, requiring two sets of isolation power supply. The mode of mutual connection after two independent outputs is adopted internally for better energy provision of SiC turn-on and turn-off. Output short circuit protection and self-recovery capabilities are also provided. General application includes:

- Universal converter
- AC servo drive system
- Electric welding machine
- Uninterruptible power supply (UPS)



Common specifications	
Short circuit protection:	Continuous, automatic recovery
Temperature rise at full load:	30°C TYP (Ta=25°C)
Cooling:	Free air convection
Operation temperature range*:	-40°C – +105°C
Storage temperature range:	-55°C – +125°C
Lead temperature	300°C MAX, 1.5mm from case for 10 sec
Storage humidity range:	< 95%
Case material:	Black flame-retardant and heat-resistant plastic [UL94-V0]
MTBF:	>3,500 K hours
Dimensions:	19.50*9.80*12.50mm
Weight:	4.2g

\* Derating when operating temperature up to 85°C (see Typical characteristics, temperature derating curve).

Input specifications					
Item	Test condition	Min	Typ	Max	Units
Input current	15V output		162/15		mA
Surge voltage		-0.7		21	VDC
Hot plug	Unavailable				
Input filter	Capacitor				

Isolation specifications					
Item	Test condition	Min	Typ	Max	Units
Isolation voltage	Input-Output, tested for 1 minute and leakage current less than 1mA	6000 3500			VDC VAC
Isolation resistance	Input-Output, test at 500VDC	1000			MΩ
Isolation capacitance	Input/Output, 100KHz/0.1V		3.5		pF

Output specifications						
Item	Test condition	Min	Typ	Max	Units	
Output voltage	+Vo: Vin= 15VDC, Pin6 & Pin7 +Io= +100mA	14.4	15	15.9	VDC	
	-Vo: Vin= 15VDC, Pin5 & Pin6 -Io= -100mA	-4.75	-5	-5.75	VDC	
Output voltage accuracy	+Vo: Vin=15VDC, Pin6 & Pin7 +Io= +100mA	-4		+6	%	
	-Vo: Vin=15VDC, Pin5 & Pin6 -Io= -100mA	-5		+15	%	
Line regulation	Input voltage change: ±1%		±1.1		%	
Load regulation	10% to 100% load					
	• +Vo		7		%	
	• -Vo		10		%	
Temperature drift coefficient	100% load			±0.02	%/°C	
Ripple & Noise*	20MHz Bandwidth					
	• +Vo		120		mVp-p	
	• -Vo		80		mVp-p	
Switching frequency	Full load, nominal input		83		KHz	

\*Test ripple and noise by "parallel cable" method. See detailed operation instructions at DC-DC application notes.

EMC specifications					
EMI	CE	CISPR22/EN55032	CLASS B	(see EMC recommended circuit)	
EMI	RE	CISPR22/EN55032	CLASS B	(see EMC recommended circuit)	
EMS	ESD	IEC/EN61000-4-2	Contact ±6KV	perf. Criteria B	

#### Example:

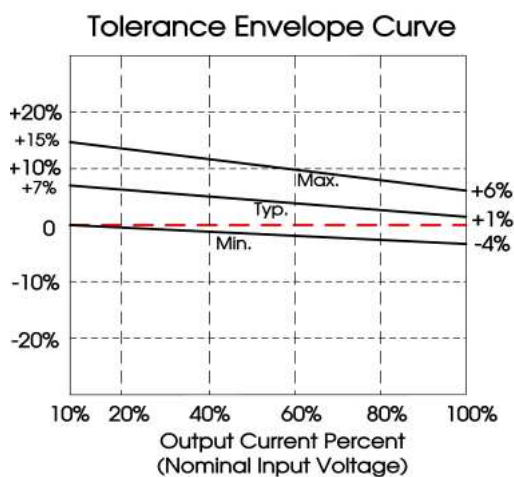
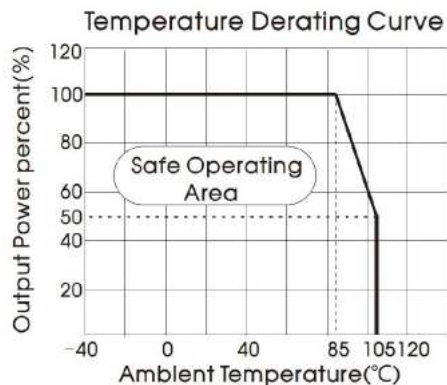
2.4S7SIC\_151505D6UP  
2.4= 2.4 Watt; S7= SIP7; SiC= SiC; 15= 15Vin;  
15= +15Vout; 05 = -5Vout; D =Dual Output; 6 = 6KVDC;  
U= Unregulated; P= Short Circuit Protection (SCP)

Part Number	Input Voltage [V]	Input current full load/ no load [mA, typ]	Output Voltage [VDC, +Vo/-Vo]	Output current [mA, +Vo/-Vo]	Max. capacitive load [μF]	Efficiency [%, typ]
2.4S7SIC_151505D6UP	15 (13.5-16.5)	193/16	+15/-5	+100/-100	220	76/80

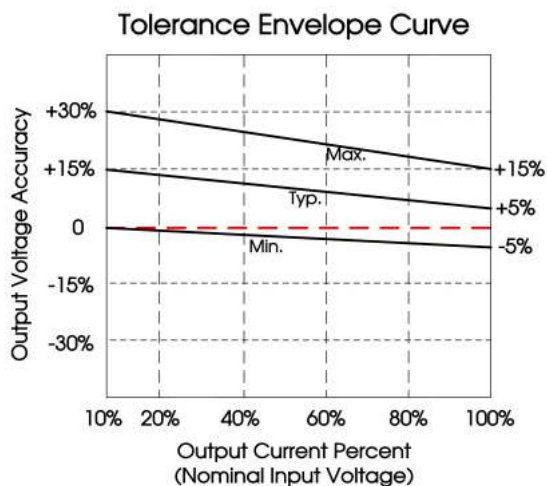
## 2.4S7SIC\_151505D6UP

2.4W - Dual Output - Wide Input - Isolated & Regulated  
DC-DC module power supply specialized for SiC driver

# Typical characteristics



+Vo tolerance envelope curve



-Vo tolerance envelope curve

# Test configurations

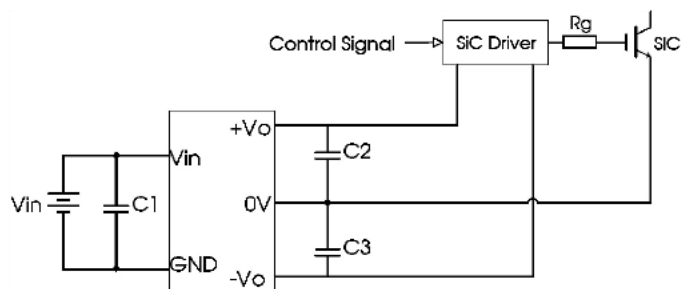


Note: C1,C2,C3: 100uF/35V (Low internal resistance capacitance)

## 2.4S7SIC\_151505D6UP

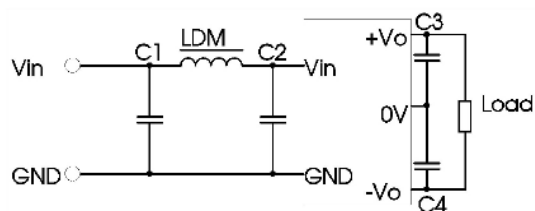
2.4W - Dual Output - Wide Input - Isolated & Regulated  
DC-DC module power supply specialized for SiC driver

### Typical application



C1/C2/C3
100uF/35V (Low internal resistance capacitance)

### EMC typical recommended circuit



Input voltage (VDC)	15	
EMI	C1/C2	4.7µF /50V
	C3/C4	100µF /35V (Low internal resistance capacitance)
	LDM	6.8µH

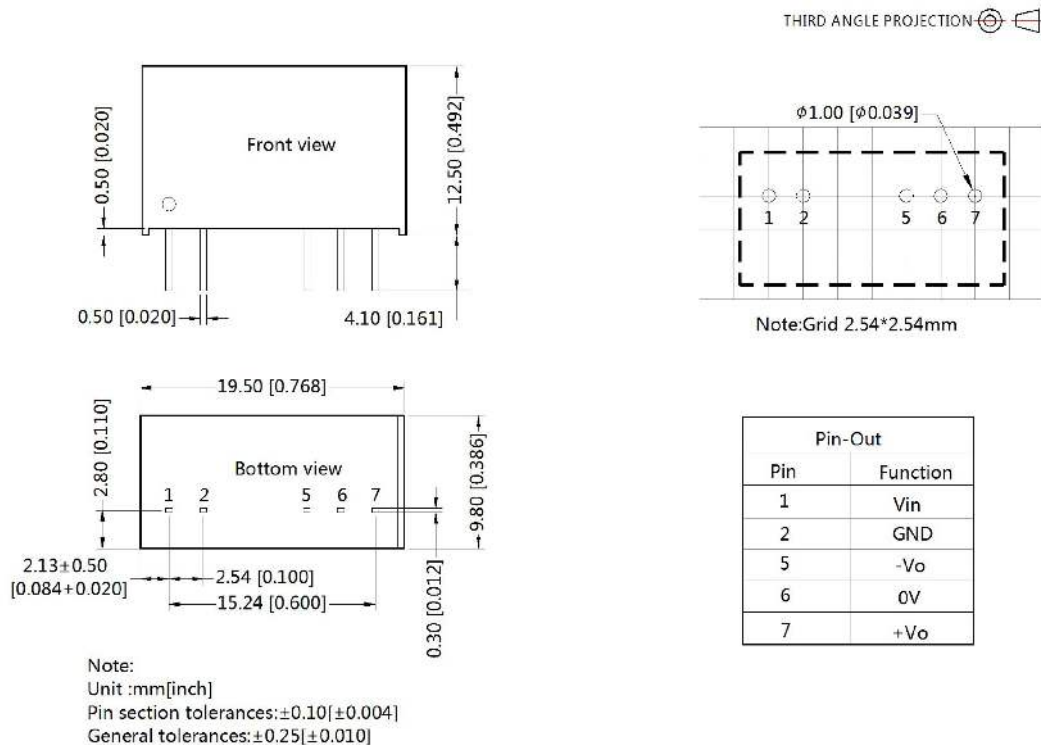
The product does not support output in parallel with power per liter or hot-swappable use.

The input and the output of the product are recommended to be connected to use low ESR series of electrolytic capacitors.

## 2.4S7SIC\_151505D6UP

2.4W - Dual Output - Wide Input - Isolated & Regulated  
DC-DC module power supply specialized for SiC driver

### Mechanical dimensions



**Note:**

1. The lead connecting the power supply module and SiC driver should be as short as possible during use;
2. The output filtering capacitor should be as close as possible to the power supply module and SiC driver;
3. The peak of the SiC driver gate drive current is high, so low internal resistance electrolytic capacitor is recommended to be used for the power supply module output filter capacitor;
4. The average output power of the driver must be lower than that of the power supply module;
5. Consider fixing with glue near the module if being used in vibration occasion;
6. The max. capacitive load should be tested within the input voltage range and under full load conditions;
7. Unless otherwise noted, all specifications are measured at Ta= 25°C, humidity <75%, nominal input voltage and rated output load.
8. In this datasheet, all test methods are based on our corporate standards.
9. All characteristics are for listed models, and non-standard models may perform differently. Please contact our technical support for more detail.
10. Please contact our technical support for any specific requirement.
11. Specifications of this product are subject to changes without prior notice.