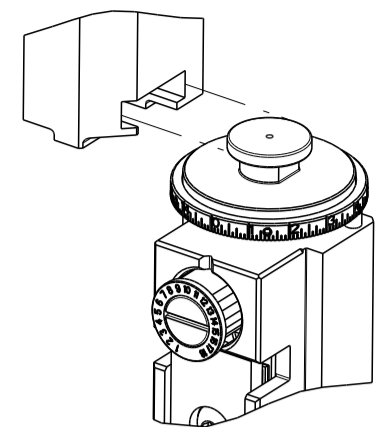


| PART NUMBER | REVISION | DESCRIPTION                     | FEED TYPE |
|-------------|----------|---------------------------------|-----------|
| 2151515-2   | H        | FINE CRIMP HEIGHT ADJUST        | PNEUMATIC |
| 7-2151515-2 | H        | PNEUMATIC AND CRIMP TOOLING KIT | PNEUMATIC |
| 7-2151515-7 | F        | CRIMP TOOLING KIT               | -         |

ATLANTIC VERSION TERMINATOR INTERFACE ADAPTER

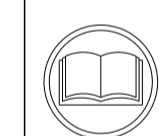


| APPLICATOR DATA |                |      |
|-----------------|----------------|------|
| CRIMP           | SIZE           | TYPE |
| WIRE            | 0.66 mm [.026] | F    |
| INSUL           | 0.69 mm [.027] | F    |

APPLICATOR INSTRUCTIONS 408-35042

| TERMINAL DATA: JST TERMINAL        |                  | JST CRIMP SPECIFICATION      |                 |
|------------------------------------|------------------|------------------------------|-----------------|
| TERMINAL NAME: TERMINAL SH         |                  |                              |                 |
| WIRE STRIP LENGTH                  |                  | INSULATION DIAMETER RANGE    |                 |
| 1.11-1.12 mm [.044-.044 IN]        |                  | Ø0.40-0.80 mm [.016-.031 IN] |                 |
| TERMINAL APPLICATION SPECIFICATION | CHM-1-2146 Rev A | -                            | -               |
| TERMINALS APPLIED                  |                  |                              |                 |
| TE TERMINAL                        | JST TERMINAL     | TE TERMINAL                  | JST TERMINAL    |
| 1572070-2                          | SSH-003T-P0.2-H  | 1900433-1                    | SSH-003T-P0.2-H |
| 1572070-3                          | SSH-003GA-P0.2-H |                              |                 |

| WIRE SIZE | CRIMP HEIGHT mm [INCH]       | CRIMP HEIGHT REFERENCE SETTING |
|-----------|------------------------------|--------------------------------|
| 28 AWG    | 0.45+/-0.02 [.0177+/- .0008] | 7.4                            |
| 30 AWG    | 0.42+/-0.02 [.0165+/- .0008] | 7.6                            |
| 32 AWG    | 0.40+/-0.02 [.0157+/- .0008] | 7.8                            |



- RECOMMENDED SPARE PARTS
- REFER TO SUPPLIED INSTRUCTION SHEET FOR CLEANING, LUBRICATION AND STORAGE OF APPLICATOR.
- APPLY PART NUMBER 2-23419-6 LOCTITE TO THREADS OF ITEM 242.
- CRIMP HEIGHT REFERENCE SETTING WAS THE SETTING USED WHEN THE APPLICATOR WAS QUALIFIED AT THE FACTORY. ADJUSTMENT MAY BE NECESSARY WHEN RUNNING APPLICATOR IN THE FIELD.
- TERMINAL LUBRICANT IS RECOMMENDED.
- 6. UNLESS SPECIFIED OTHERWISE TORQUE VALUES SHALL BE USED PER DOCUMENT, 101-35000.
- TERMINAL PITCH NOT COMPATIBLE WITH MECHANICAL FEED.
- NO CUT CARRIER.

**\*WARNING**  
ON INSTALLATION, SET WIRE DISC TO CRIMP HEIGHT REFERENCE SETTING FOR LARGEST WIRE SIZE. CRIMP HEIGHT REFERENCE SETTINGS GREATER THAN THE VALUE SHOWN MAY CAUSE DAMAGE TO THE CRIMP TOOLING. REFER TO THE INSTRUCTION SHEET FOR PROPER SETUP AND ADJUSTMENTS.

| LOC | DIST | REVISIONS |     |               |           |     |      |
|-----|------|-----------|-----|---------------|-----------|-----|------|
| A   | 66   | P         | LTN | DESCRIPTION   | DATE      | DWN | APVD |
|     |      | E         |     | ECR-16-003609 | 10MAR2016 | JH  | CT   |
|     |      | F         |     | ECR-18-003463 | 06MAR2018 | JAH | CT   |
|     |      | G         |     | ECR-19-002302 | 13FEB2019 | TB  | CT   |
|     |      | H         |     | ECR-19-011870 | 27JUL2019 | TB  | TE   |

|   |     |     |             |                                     |         |
|---|-----|-----|-------------|-------------------------------------|---------|
| - | 1   | 1   | 2119641-1   | FEED CAM, AIR FEED                  | 248     |
| - | 1   | 1   | 2119082-1   | CAM, SNAIL, INSULATION ADJUSTMENT   | 244     |
| - | 1   | 1   | 2079764-1   | WASHER, WAVE SPRING, CREST-TO-CREST | 243     |
| - | 1   | 1   | 2119083-1   | RETAINER, INSULATION DIAL           | 242     |
| - | 1   | 1   | 2844940-1   | AIR FEED MODULE                     | 238     |
| - | REF | REF | 994970-2    | COUNTER, MAGNETIC                   | 164     |
| - | 1   | 1   | 2119955-1   | ASSY, LUBRICATOR, SIDE FEED         | 113     |
| - | 1   | 1   | 2844908-1   | SCREW, LOCKING                      | 99      |
| - | 1   | 1   | 2844907-1   | POST, LOCKING                       | 98      |
| - | 1   | 1   | 1803607-3   | DOCUMENTATION PACKAGE               | 71      |
| - | 1   | 1   | 1-2119791-4 | DEPRESSOR, WIRE                     | 70      |
| - | 1   | 1   | 2119740-1   | TAG, IDENTIFICATION                 | 67      |
| - | 2   | 2   | 2168078-1   | SCREW, DRIVE, RH, RoHS, 2 x .188    | 66      |
| - | 1   | 1   | 2161425-1   | SCREW, SHOULDER                     | 60      |
| - | 1   | 1   | 5-18022-5   | SCR, HEX HD CAP, M4 X 6.0           | 59      |
| - | 1   | 1   | 1338685-1   | PAWL, FEED                          | 56      |
| - | 4   | 4   | 2168083-3   | SCR, SKT HD CAP, RoHS, M4 X 12.0    | 54      |
| - | 1   | 1   | 18023-9     | SCR, SKT HD CAP M4 X 6.0            | 49      |
| - | 1   | 1   | 2-1803583-5 | APPLICATOR BASIC ASSEMBLY, SF       | 46      |
| - | 1   | 1   | 1803515-1   | RAM ASSEMBLY, SF ATLANTIC           | 44      |
| - | 1   | 1   | 1803602-1   | SCR, BHSC, RoHS (M8 X 25)           | 41      |
| - | 1   | 1   | 2-1752356-6 | SUPPORT, TERMINAL                   | 34      |
| - | 2   | 2   | 2079383-5   | SCR, BHSC, RoHS (M4 X 20)           | 33      |
| - | 2   | 2   | 2-2844962-3 | SPACER, CYLINDRICAL, STRIP GUIDE    | 30      |
| - | 1   | 1   | 2844992-1   | ASSEMBLY, STRIP GUIDE               | 29      |
| - | 1   | 1   | 1320928-2   | STRIP GUIDE                         | 24      |
| - | 1   | 1   | 2168083-2   | SCR, SKT HD CAP, RoHS, M4 X 8.0     | 21      |
| - | 2   | 2   | 1-18028-2   | WASHER, FLAT, REG M4                | 20      |
| - | 1   | 1   | 1803338-1   | STRIPPER, SIDE FEED                 | 19      |
| - | 1   | 1   | 3-22280-3   | SPRING, COMPRESSION                 | 12      |
| - | 1   | 1   | 1-356885-5  | STOP, SHEAR                         | 11      |
| - | 1   | 1   | 2119805-1   | SHEAR HOLDER, FRONT                 | 10      |
| - | 1   | 1   | 1803095-6   | FLOATING SHEAR, FRONT               | 9       |
| - | 1   | 2   | 1-1803200-1 | ANVIL, COMBINATION                  | 8       |
| - | -   | -   | -           | -                                   | 7       |
| - | -   | -   | -           | -                                   | 6       |
| - | 1   | 1   | 1-2119757-8 | DEPRESSOR, SHEAR                    | 5       |
| - | 1   | 1   | 2-238011-5  | BLOCK, CRIMPER SPACER               | 4       |
| - | 1   | 2   | 1803339-1   | CRIMPER, INSULATION F               | 3       |
| - | -   | -   | -           | -                                   | 2       |
| - | 1   | 2   | 1-1803193-0 | CRIMPER, WIRE PREMIUM               | 1       |
| - | 77  | 72  | -2          | PART NO                             | ITEM NO |

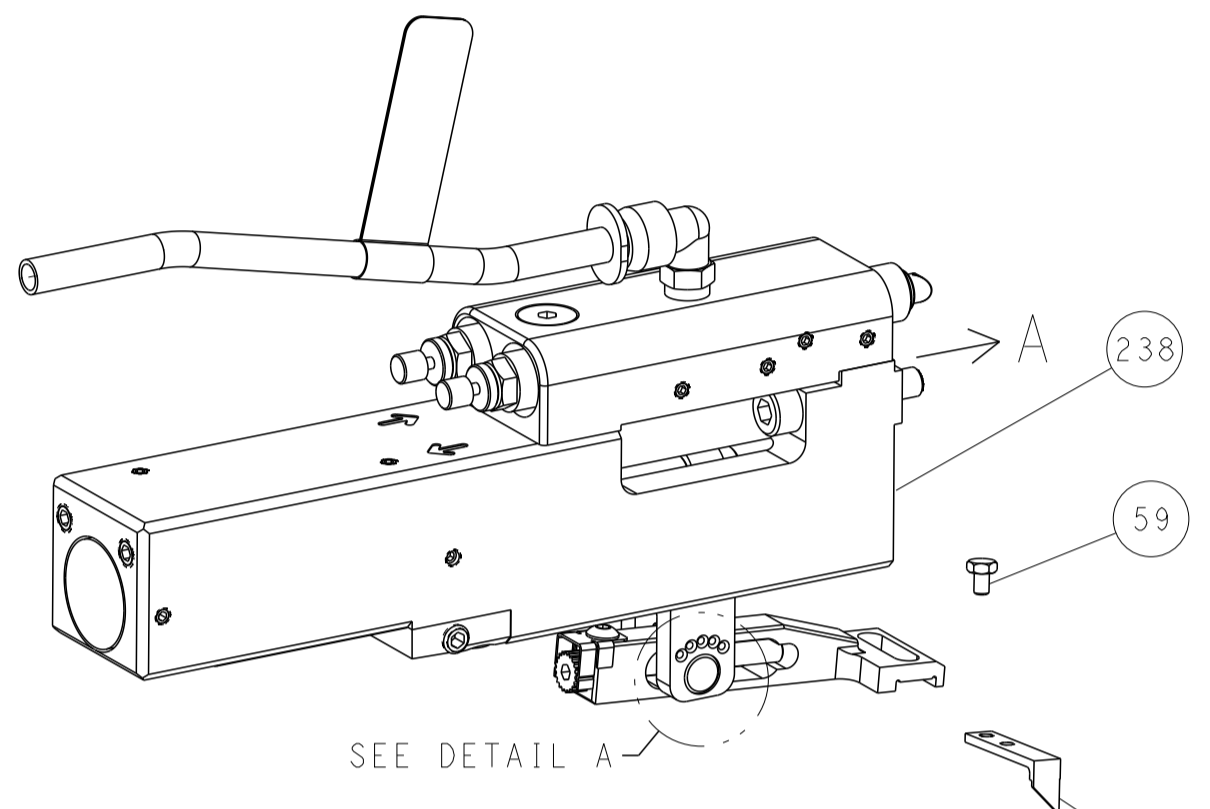
ATLANTIC VERSION  
Shown on sheets 1 of 4 & 2 of 4  
(Pacific version shown on sheets 3 of 4 & 4 of 4)

| DIMENSIONS: |         | TOLERANCES UNLESS OTHERWISE SPECIFIED: |         | MATERIAL: |         | FINISH: |        | WEIGHT: |  | SCALE: |     | SHEET: |      | REV: |  |
|-------------|---------|--|---------|-----------|---------|---------|--------|---------|--|--------|-----|--------|------|------|--|
| mm          | 0 PLC ± | 1 PLC ±                                | 2 PLC ± | 3 PLC ±   | 4 PLC ± | ANGLES  | FINISH |         |  |        | 1:2 | 1      | of 4 | H    |  |

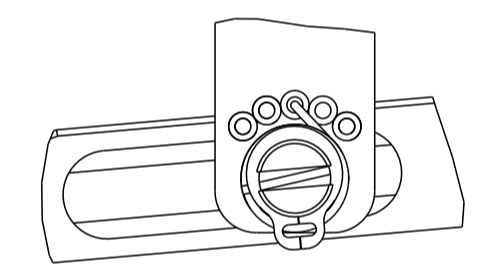
Customer Accessible Production Drawing

| LOC | DIST | REVISIONS |     |             |      |     |      |
|-----|------|-----------|-----|-------------|------|-----|------|
|     |      | P         | LTN | DESCRIPTION | DATE | DWN | APVD |
| A   | 66   | -         | -   | SEE SHEET 1 | -    | -   | -    |

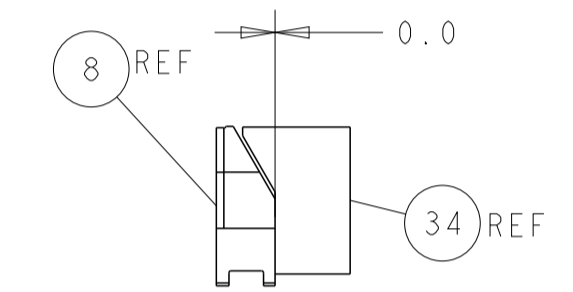
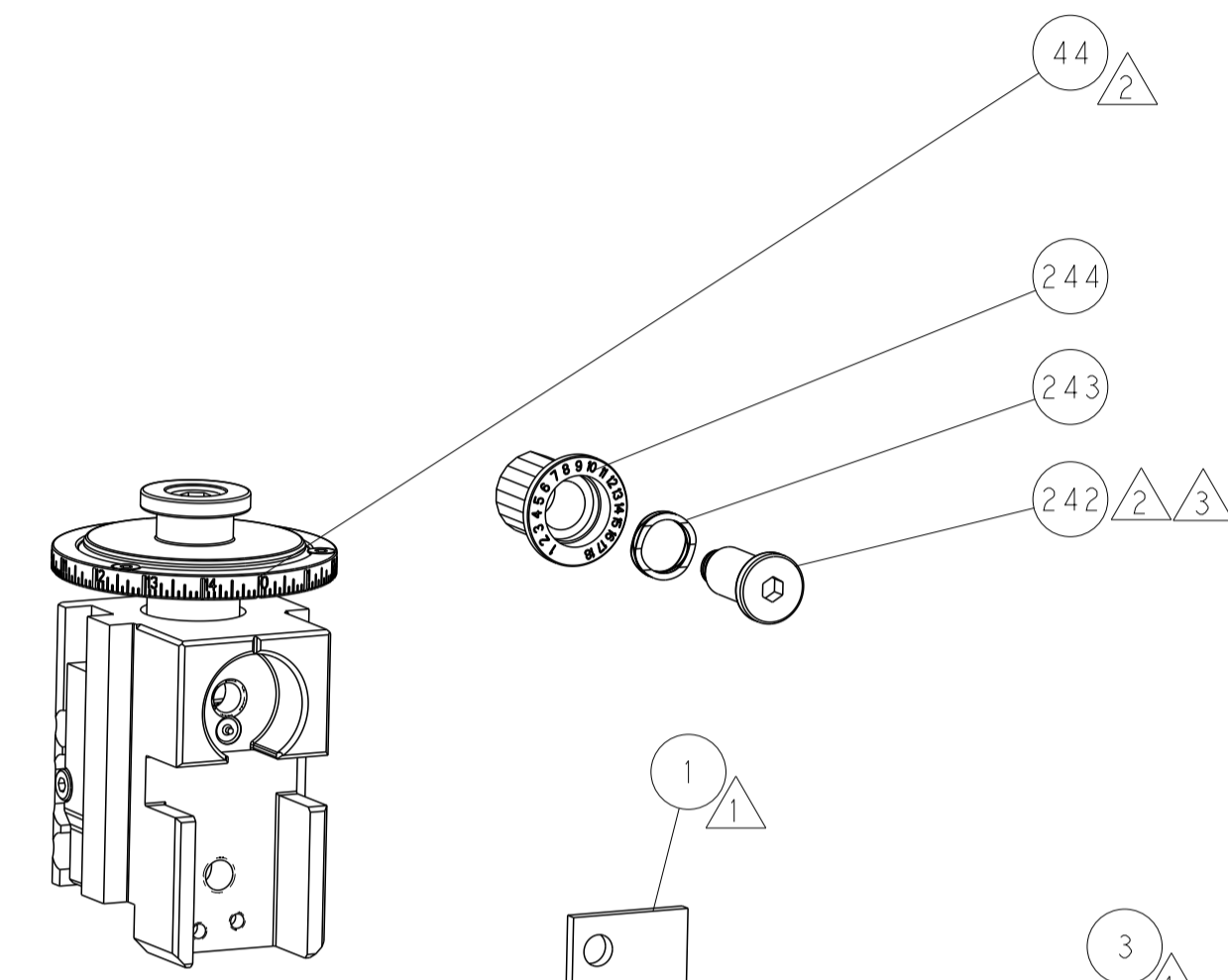
### FEED TYPE PNEUMATIC



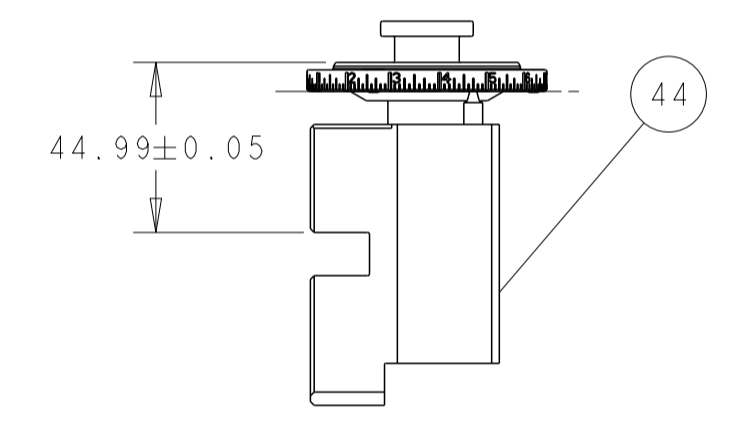
FEED SPRING SETTING POSITION  
(SHOWN FROM REAR SIDE)



DETAIL A

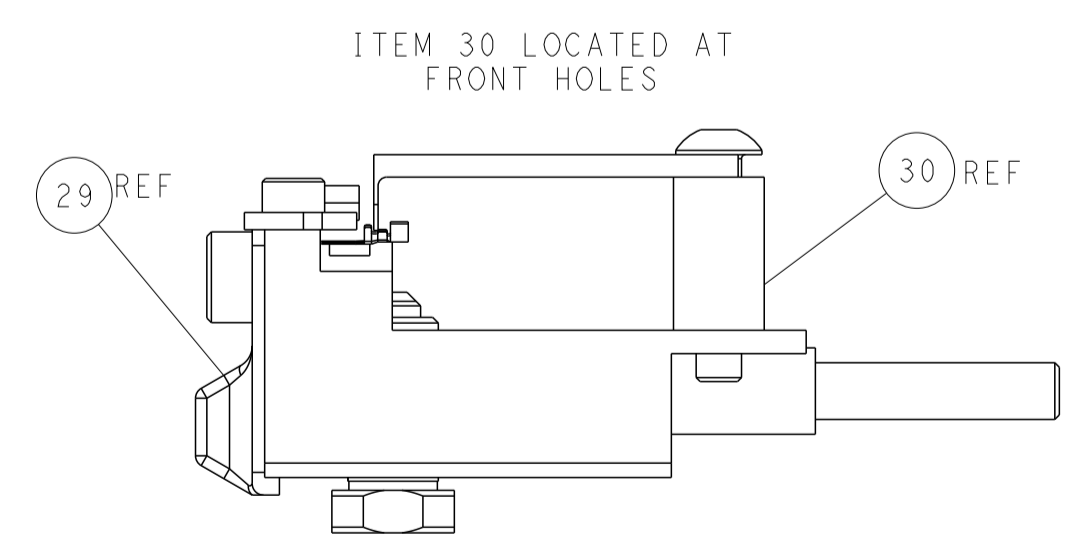
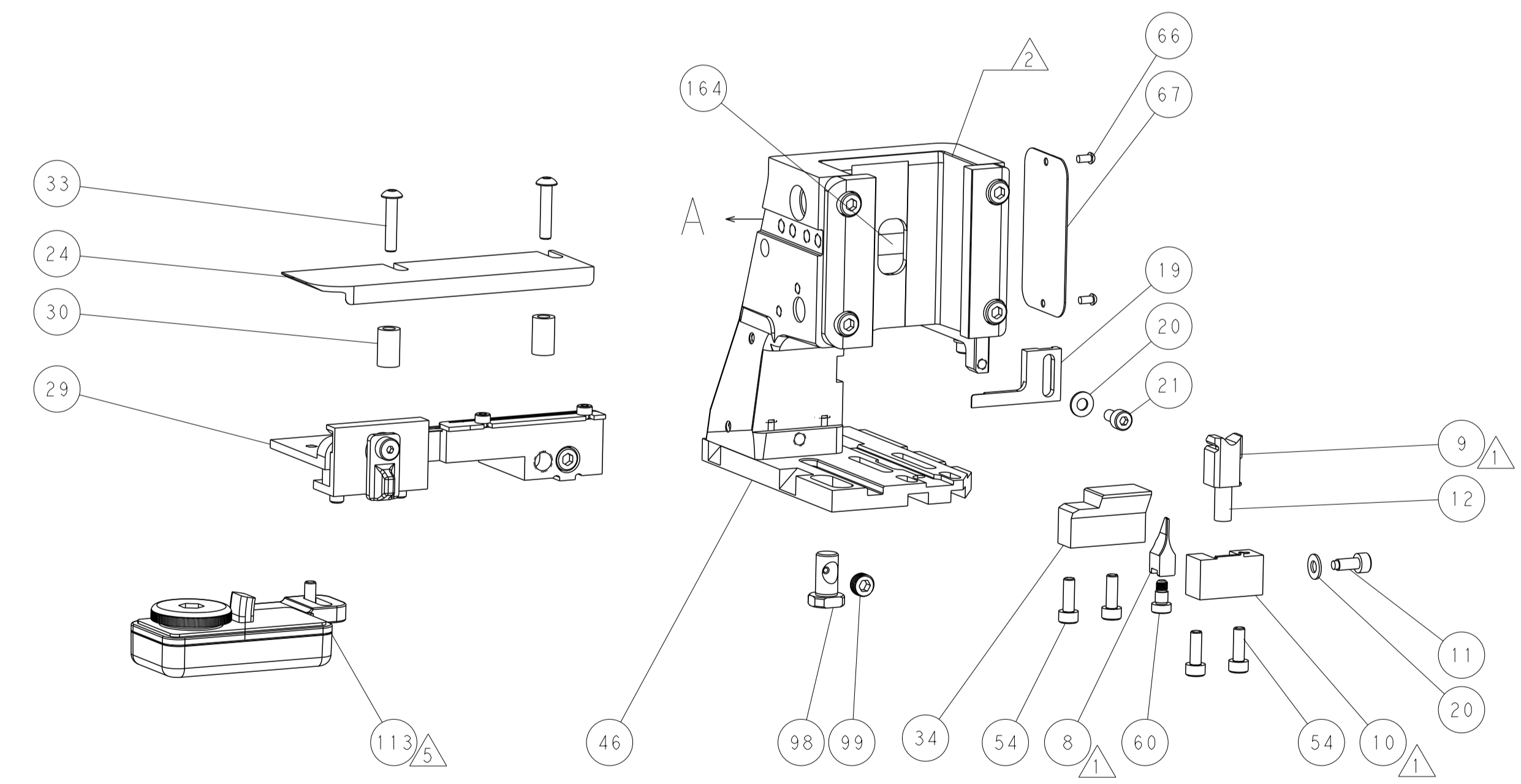
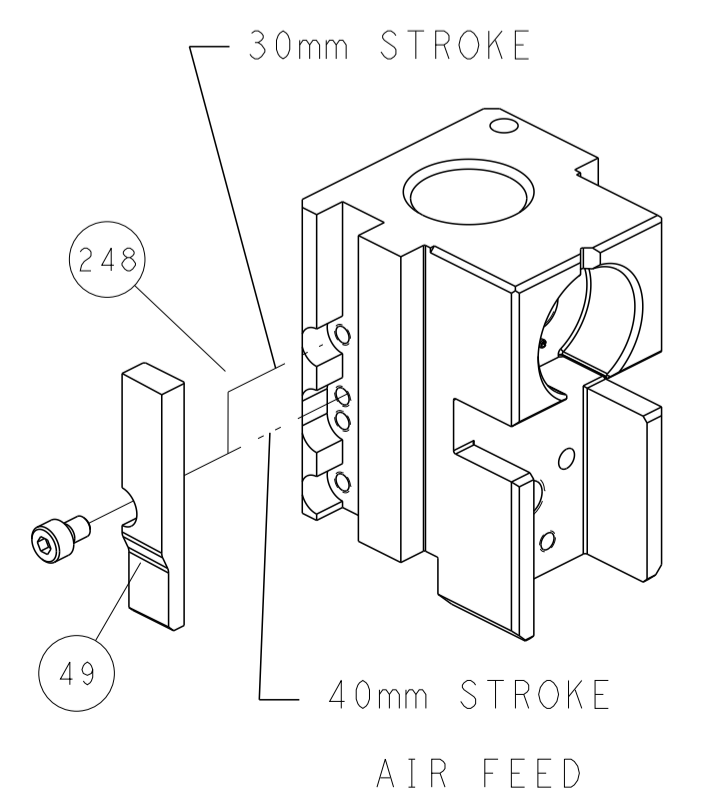


TERMINAL SUPPORT LOCATION



RAM SET-UP

### CAM POSITIONS



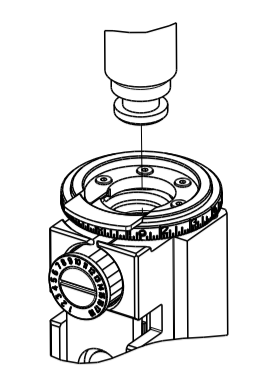
FEED TRACK POSITION  
GUIDE BY INSULATION BARREL

**ATLANTIC VERSION**  
 Shown on sheets 1 of 4 & 2 of 4  
 (Pacific version shown on sheets 3 of 4 & 4 of 4)

|   |                                       |   |   |
|---|---------------------------------------|---|---|
| <small>THIS DRAWING IS UNPUBLISHED. RELEASED FOR PUBLICATION. ALL RIGHTS RESERVED. THIS DRAWING IS THE PROPERTY OF TYCO ELECTRONICS CORPORATION. IT IS TO BE USED ONLY FOR THE PURPOSES AND IN THE MANNER SPECIFIED BY THE DRAWING. IT IS NOT TO BE REPRODUCED OR TRANSMITTED IN ANY FORM OR BY ANY MEANS, ELECTRONIC OR MECHANICAL, INCLUDING PHOTOCOPYING, RECORDING, OR BY ANY INFORMATION STORAGE AND RETRIEVAL SYSTEM, WITHOUT THE WRITTEN PERMISSION OF TYCO ELECTRONICS CORPORATION.</small> |                                       | DWN<br>C. CHEN 02NOV2012<br>CHK<br>S. XI 02NOV2012<br>APVD<br>J. CRUZ 02NOV2012 | TE Connectivity<br>Harrisburg, PA 17105-3608                      |
| DIMENSIONS:<br>mm<br>TOLERANCES UNLESS OTHERWISE SPECIFIED:<br>0 PLC ±<br>1 PLC ±<br>2 PLC ±<br>3 PLC ±<br>4 PLC ±<br>ANGLES ±<br>FINISH  | NAME<br>Ocean Side Feed<br>Applicator | SIZE<br>A1<br>CAGE CODE<br>00779<br>DRAWING NO<br>C=2151515                     | RESTRICTED TO<br>-<br>SCALE<br>1:2<br>SHEET<br>2 OF 4<br>REV<br>H |
| MATERIAL<br>-   |                                       | WEIGHT<br>-<br>Customer Accessible Production Drawing                           | SHEETS 3 & 4 ARE NOT REQUIRED FOR ATLANTIC VERSION                |

| PART NUMBER | REVISION | DESCRIPTION              | FEED TYPE |
|-------------|----------|--------------------------|-----------|
| 2-2151515-2 | H        | FINE CRIMP HEIGHT ADJUST | PNEUMATIC |
| 7-2151515-7 | F        | CRIMP TOOLING KIT        | -         |

PACIFIC VERSION TERMINATOR INTERFACE ADAPTER

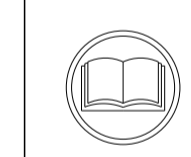


| APPLICATOR DATA |                |      |
|-----------------|----------------|------|
| CRIMP           | SIZE           | TYPE |
| WIRE            | 0.66 mm [.026] | F    |
| INSUL           | 0.69 mm [.027] | F    |

APPLICATOR INSTRUCTIONS  
408-35042

|  |                  |   |                 |
|--|------------------|---|-----------------|
| TERMINAL DATA: JST TERMINAL                            |                  | JST CRIMP SPECIFICATION                                   |                 |
| TERMINAL NAME: TERMINAL SH                             |                  |   |                 |
| WIRE STRIP LENGTH<br>1.11-1.12 mm [.044-.044 IN]       |                  | INSULATION DIAMETER RANGE<br>Ø0.40-0.80 mm [.016-.031 IN] |                 |
| TERMINAL APPLICATION SPECIFICATION<br>CHM-1-2146 Rev A |                  |   |                 |
| TERMINALS APPLIED 5 7                                  |                  |   |                 |
| TE TERMINAL  | JST TERMINAL     | TE TERMINAL   | JST TERMINAL    |
| 1572070-2  | SSH-003T-P0.2-H  | 1900433-1   | SSH-003T-P0.2-H |
| 1572070-3  | SSH-003GA-P0.2-H |   |                 |

| WIRE SIZE | CRIMP HEIGHT mm [INCH]       | CRIMP HEIGHT REFERENCE SETTING |
|-----------|------------------------------|--------------------------------|
| 28 AWG    | 0.45+/-0.02 [.0177+/- .0008] | 7.4                            |
| 30 AWG    | 0.42+/-0.02 [.0165+/- .0008] | 7.6                            |
| 32 AWG    | 0.40+/-0.02 [.0157+/- .0008] | 7.8                            |



- 1 RECOMMENDED SPARE PARTS
- 2 REFER TO SUPPLIED INSTRUCTION SHEET FOR CLEANING, LUBRICATION AND STORAGE OF APPLICATOR.
- 3 APPLY PART NUMBER 2-23419-6 LOCTITE TO THREADS OF ITEM 242.
- 4 CRIMP HEIGHT REFERENCE SETTING WAS THE SETTING USED WHEN THE APPLICATOR WAS QUALIFIED AT THE FACTORY. ADJUSTMENT MAY BE NECESSARY WHEN RUNNING APPLICATOR IN THE FIELD.
- 5 TERMINAL LUBRICANT IS RECOMMENDED.
- 6. UNLESS SPECIFIED OTHERWISE TORQUE VALUES SHALL BE USED PER DOCUMENT, 101-35000.
- 7 TERMINAL PITCH NOT COMPATIBLE WITH MECHANICAL FEED.
- 8 NO CUT CARRIER.

**\*WARNING**  
 ON INSTALLATION, SET WIRE DISC TO CRIMP HEIGHT REFERENCE SETTING FOR LARGEST WIRE SIZE. CRIMP HEIGHT REFERENCE SETTINGS GREATER THAN THE VALUE SHOWN MAY CAUSE DAMAGE TO THE CRIMP TOOLING. REFER TO THE INSTRUCTION SHEET FOR PROPER SETUP AND ADJUSTMENTS.

| LOC | DIST | REV | LTN | DESCRIPTION | DATE | DWN | APVD |
|-----|------|-----|-----|-------------|------|-----|------|
| A   | 66   | -   | -   | SEE SHEET 1 | -    | -   | -    |

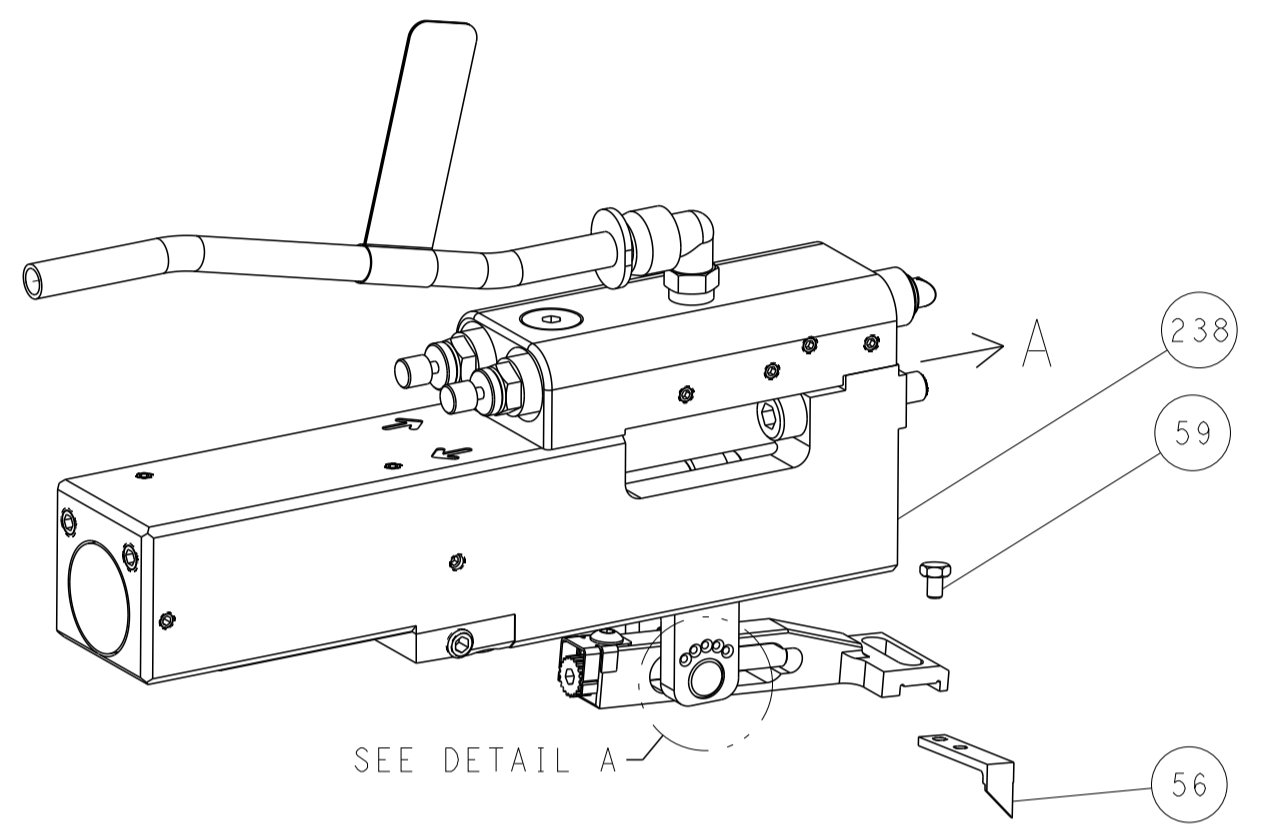
| REV | LTN | DESCRIPTION | ITEM NO                             |     |
|-----|-----|-------------|-------------------------------------|-----|
| -   | 1   | 2119082-1   | CAM, SNAIL, INSULATION ADJUSTMENT   | 244 |
| -   | 1   | 2079764-1   | WASHER, WAVE SPRING, CREST-TO-CREST | 243 |
| 3   | 1   | 2119083-1   | RETAINER, INSULATION DIAL           | 242 |
| -   | 1   | 2844940-1   | AIR FEED MODULE                     | 238 |
| -   | REF | 994970-2    | COUNTER, MAGNETIC                   | 164 |
| -   | 1   | 2119641-2   | FEED CAM, AIR FEED                  | 151 |
| -   | 1   | 2161425-1   | SCREW, SHOULDER                     | 144 |
| -   | 4   | 2168083-9   | SCR, SKT HD CAP, RoHS, M4 X 20      | 143 |
| -   | 1   | 3-1803583-0 | APPLICATOR BASIC ASSEMBLY, SF       | 141 |
| -   | 1   | 1803516-1   | RAM ASSEMBLY, SF PACIFIC            | 140 |
| 5   | 1   | 2119955-1   | ASSY, LUBRICATOR, SIDE FEED         | 113 |
| -   | 1   | 2844908-1   | SCREW, LOCKING                      | 99  |
| -   | 1   | 2844907-1   | POST, LOCKING                       | 98  |
| -   | 1   | 1803607-3   | DOCUMENTATION PACKAGE               | 71  |
| -   | 1   | 1-2119791-4 | DEPRESSOR, WIRE                     | 70  |
| -   | 1   | 2119740-1   | TAG, IDENTIFICATION                 | 67  |
| -   | 2   | 2168078-1   | SCREW, DRIVE, RH, RoHS, 2 x .188    | 66  |
| -   | 1   | 5-18022-5   | SCR, HEX HD CAP, M4 X 6.0           | 59  |
| -   | 1   | 1338685-1   | PAWL, FEED                          | 56  |
| -   | 1   | 18023-9     | SCR, SKT HD CAP M4 X 6.0            | 49  |
| -   | 1   | 1803602-1   | SCR, BHSC, RoHS (M8 X 25)           | 41  |
| -   | 1   | 2-1752356-6 | SUPPORT, TERMINAL                   | 34  |
| -   | 2   | 2079383-5   | SCR, BHSC, RoHS (M4 X 20)           | 33  |
| -   | 2   | 2-2844962-3 | SPACER, CYLINDRICAL, STRIP GUIDE    | 30  |
| -   | 1   | 2844992-1   | ASSEMBLY, STRIP GUIDE               | 29  |
| -   | 1   | 1320928-2   | STRIP GUIDE                         | 24  |
| -   | 1   | 2168083-2   | SCR, SKT HD CAP, RoHS, M4 X 8.0     | 21  |
| -   | 2   | 1-18028-2   | WASHER, FLAT, REG M4                | 20  |
| -   | 1   | 1803338-1   | STRIPPER, SIDE FEED                 | 19  |
| -   | 1   | 3-22280-3   | SPRING, COMPRESSION                 | 12  |
| -   | 1   | 1-356885-5  | STOP, SHEAR                         | 11  |
| 1   | 1   | 2119805-1   | SHEAR HOLDER, FRONT                 | 10  |
| 1   | 1   | 1803095-6   | FLOATING SHEAR, FRONT               | 9   |
| 1   | 1   | 1-1803200-1 | ANVIL, COMBINATION                  | 8   |
| -   | -   | -           | -                                   | 7   |
| -   | -   | -           | -                                   | 6   |
| -   | 1   | 1-2119757-8 | DEPRESSOR, SHEAR                    | 5   |
| -   | 1   | 2-238011-5  | BLOCK, CRIMPER SPACER               | 4   |
| 1   | 1   | 1803339-1   | CRIMPER, INSULATION F               | 3   |
| -   | -   | -           | -                                   | 2   |
| 1   | 1   | 1-1803193-0 | CRIMPER, WIRE PREMIUM               | 1   |
| -   | -   | -           | -                                   |     |

**PACIFIC VERSION**  
 Shown on sheets 3 of 4 & 4 of 4  
 (Atlantic version shown on sheets 1 of 4 & 2 of 4)

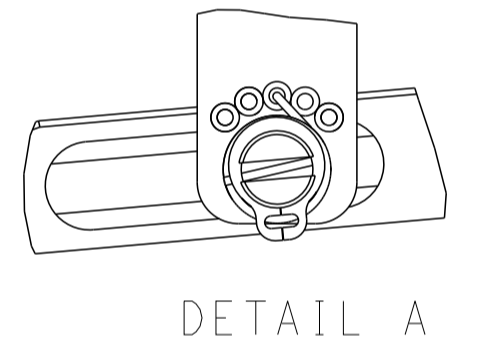
|  |  |  |  |                      |  |  |  |                                 |  |  |  |
|--|--|--|--|----------------------|--|--|--|---------------------------------|--|--|--|
| DIMENSIONS: mm                         |  | TOLERANCES UNLESS OTHERWISE SPECIFIED: |  | DWN C.CHEN 02NOV2012 |  | CHK S.XI 02NOV2012   |  | APVD J.CRUIZ 02NOV2012          |  | TE Connectivity<br>Harrisburg, PA 17105-3608 |  |
|  |  |  |  | PRODUCT SPEC         |  | APPLICATION SPEC   |  | NAME Ocean Side Feed Applicator |  | RESTRICTED TO                                |  |
| MATERIAL                               |  | FINISH                                 |  | WEIGHT               |  | SCALE  |  | SHEET 3 OF 4                    |  | REV H  |  |
| Customer Accessible Production Drawing |  |  |  |                      |  | SIZE: A1   CAGE CODE: 00779   DRAWING NO: 2151515   SCALE: 1:2 |  |                                 |  |  |  |

| LOC |      | DIST |    | REVISIONS   |      |    |         |
|-----|------|------|----|-------------|------|----|---------|
| NO. | REV. | DATE | BY | DESCRIPTION | DATE | BY | APPROV. |
| A   | 66   |      |    | SEE SHEET 1 |      |    |         |

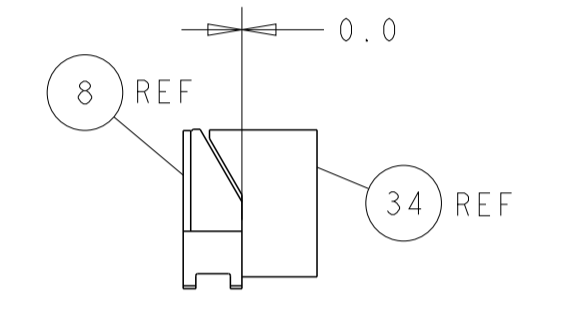
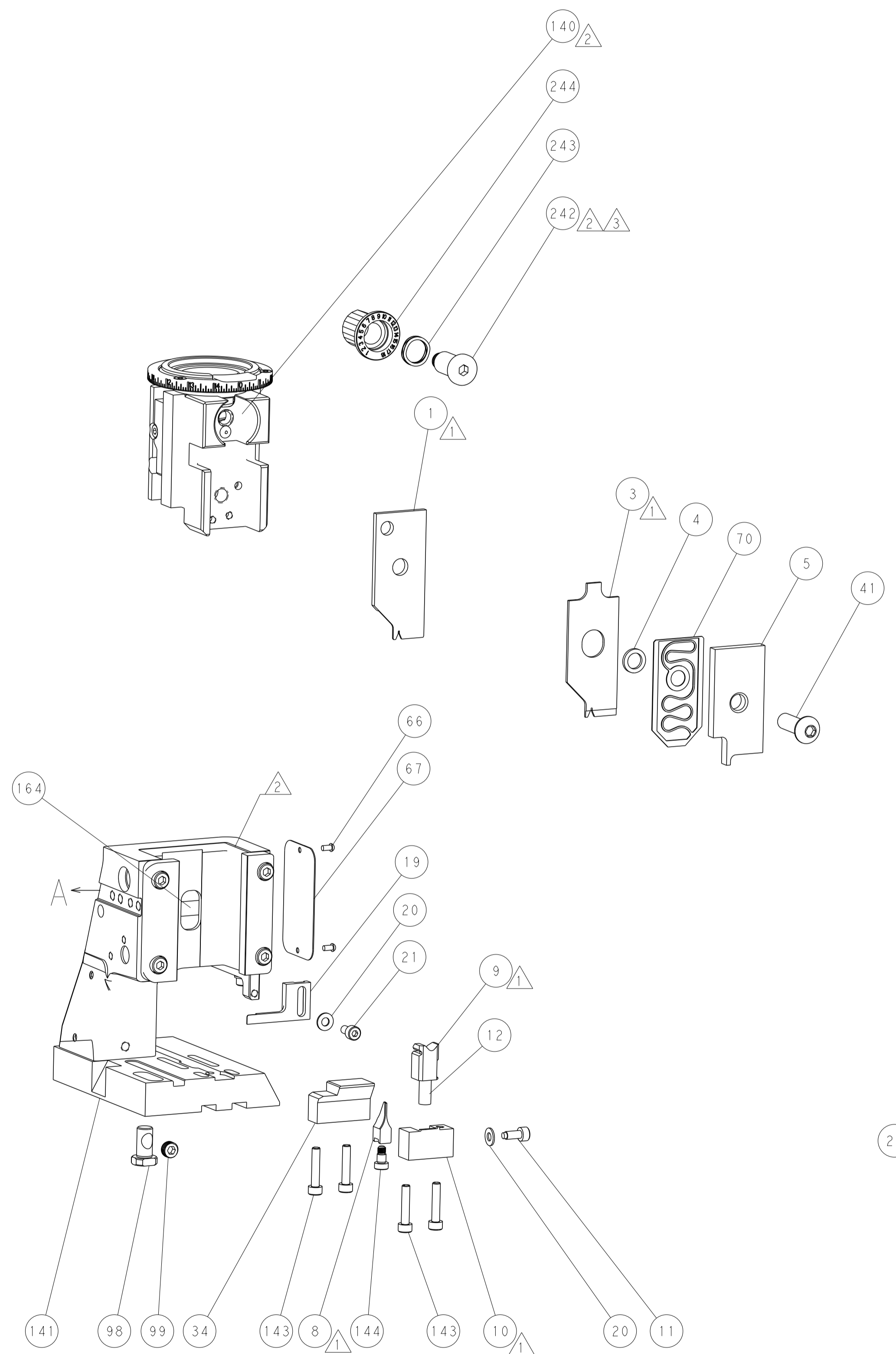
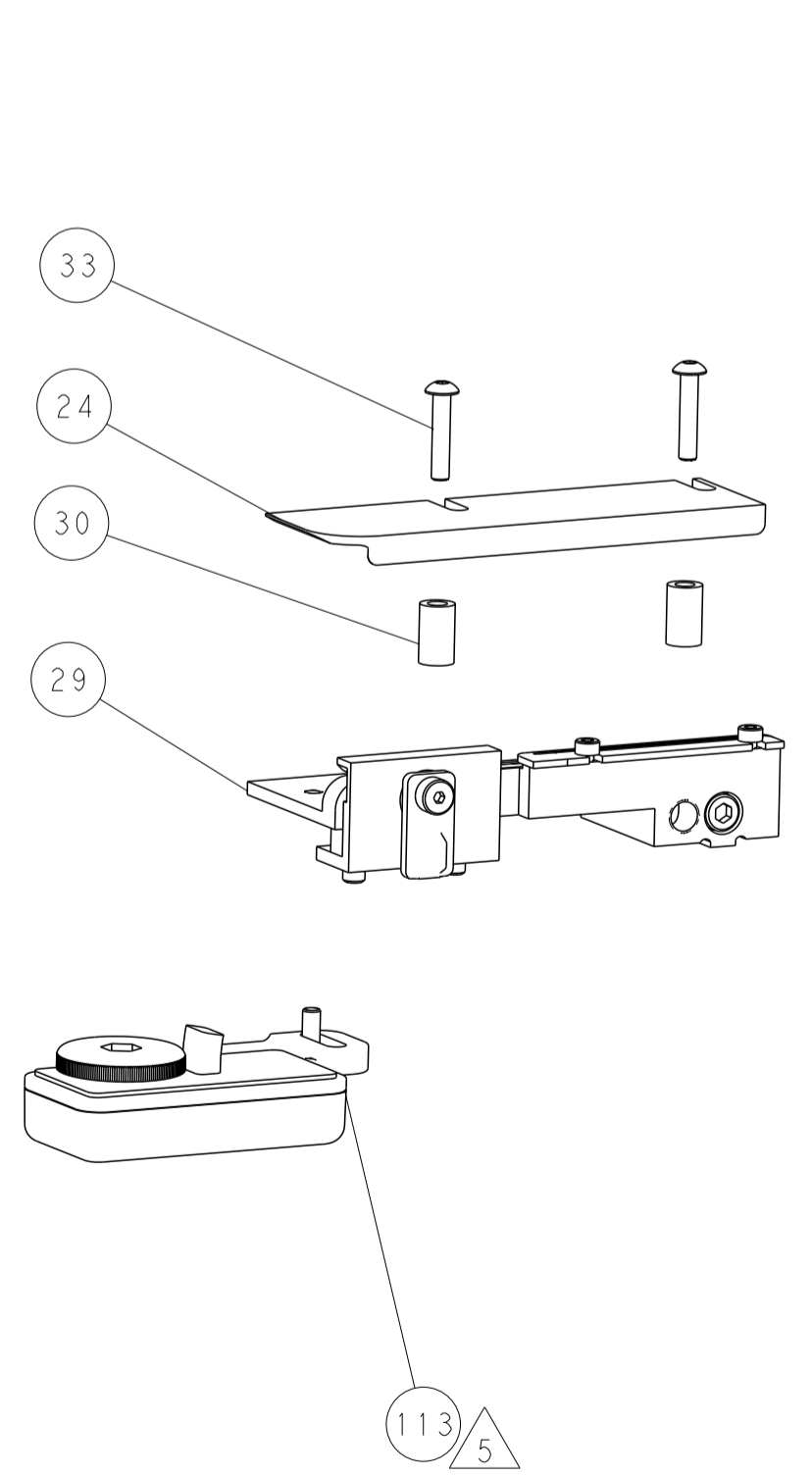
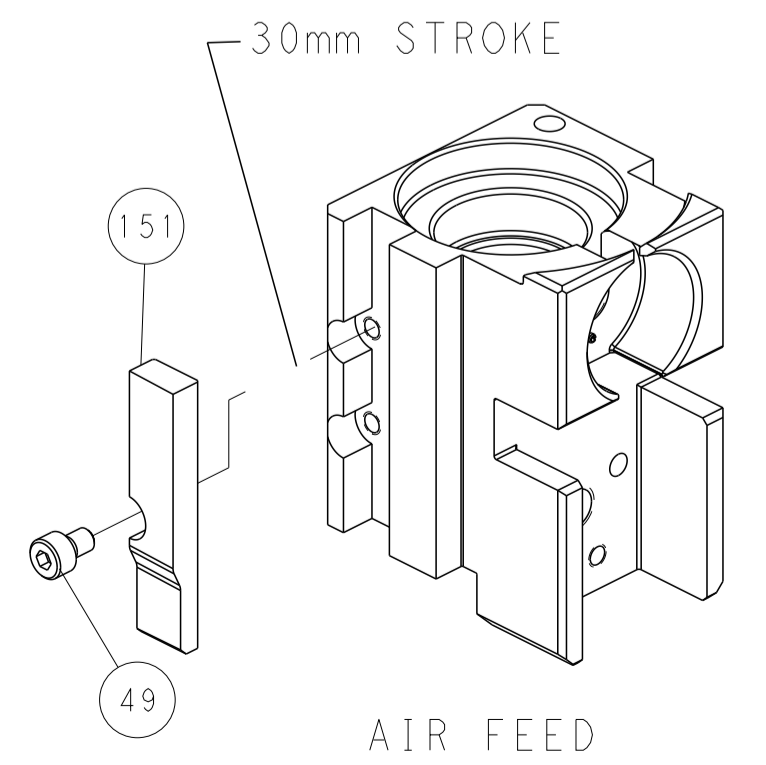
### FEED TYPE PNEUMATIC



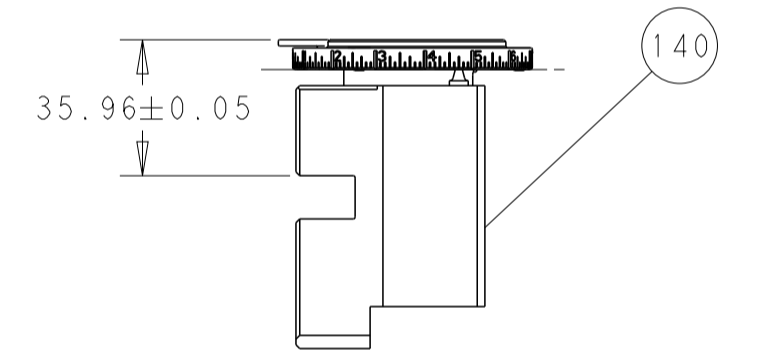
SEE DETAIL A  
 FEED SPRING SETTING POSITION  
 (SHOWN FROM REAR SIDE)



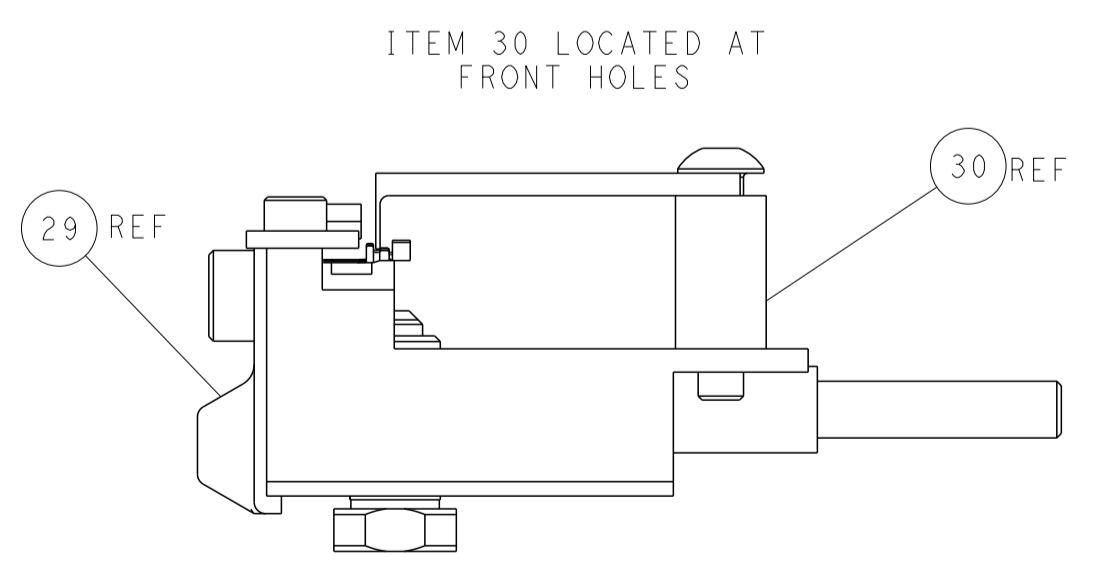
### CAM POSITIONS



TERMINAL SUPPORT LOCATION



RAM SET-UP



FEED TRACK POSITION GUIDE BY INSULATION BARREL

**PACIFIC VERSION**  
 Shown on sheets 3 of 4 & 4 of 4  
 (Atlantic version shown on sheets 1 of 4 & 2 of 4)

|  |          |  |         |                       |         |   |                                 |
|--|----------|--|---------|-----------------------|---------|---|---------------------------------|
| DIMENSIONS:                            |          | TOLERANCES UNLESS OTHERWISE SPECIFIED: |         | DWN C. CHEN 02NOV2012 |         | STE TE Connectivity Harrisburg, PA 17105-3608 |                                 |
| mm                                     | 0 PLC ±  | 1 PLC ±                                | 2 PLC ± | 3 PLC ±               | 4 PLC ± | APVD S. XI 02NOV2012                          | NAME Ocean Side Feed Applicator |
|  | ANGLES ± | FINISH ±                               |         |                       |         | PRODUCT SPEC                                  | APPLICATION SPEC                |
| MATERIAL                               |          |  |         |                       |         | SIZE CAGE CODE DRAWING NO                     | RESTRICTED TO                   |
|  |          |  |         |                       |         | WEIGHT  | A 00779 C=2151515               |
| Customer Accessible Production Drawing |          |  |         |                       |         | SCALE 1:2                                     | SHEET 4 OF 4 REV H              |