

TPD8S300 Evaluation Module

This user's guide describes the characteristics, operation, and use of the TPD8S300 evaluation module (EVM). This EVM is a TPD8S300 integrated chip set into a USB Type-C passthrough board to allow the user to test the operation of the TPD8S300 overvoltage protection and ESD protection in their own system. This user's guide includes setup instructions, schematic diagrams, a bill of materials, and printed-circuit board layout drawings for the EVM.

Contents

1	Introduction	2
2	Board Setup	2
	2.1 Overvoltage Protection Testing	2
	2.2 ESD Testing	3
3	Schematic.....	4
4	Board Layout	5
5	Bill of Materials	7

List of Figures

1	CC1 Line Short to 20-V Waveform	3
2	TPD8S300EVM	3
3	TPD8S300EVM Schematic.....	4
4	Top Layer	5
5	Ground Plane 1	5
6	Midlayer 1.....	5
7	Ground Plane 2	5
8	Power Plane 1.....	5
9	Midlayer 2.....	5
10	Ground Plane 3	6
11	Bottom Layer	6

List of Tables

1	Bill of Materials	7
---	-------------------------	---

1 Introduction

Texas Instrument's TPD8S300 evaluation module helps designers evaluate the operation and performance of the TPD8S300 device. The TPD8S300 is a single-chip solution for protection of the USB Type-C configuration channel (CC), sideband use channel (SBU), and D_{\pm} data lines. The device provides Short-to-VBUS Over Voltage Protection up to 22 V for CC1, CC2, SBU1, and SBU2 pins to prevent damage caused by a faulty connector or mechanical twist shorting pins. The TPD8S300 also provides 8-channels of IEC 61000-4-2 ESD protection for CC1, CC2, SBU1, SBU2, D_{\pm} (Top Side), and D_{\pm} (Bottom Side) pins of the USB Type-C connector.

2 Board Setup

The pass-through EVM allows the user to ensure that the TPD8S300 will not impede typical operation of their USB port while also allowing the user to test the TPD8S300 protection during an overvoltage or ESD event.

To test the TPD8S300 EVM, plug the male ("system side", J1) connector on the EVM into a USB Type-C female port and plug a typical USB Type-C cable or peripheral into the EVM's female connector ("connector side", J2). The TPD8S300 is intended to be placed very close to the port in a typical system, so this setup will closely simulate a designed in TPD8S300. When plugged in, the user can ensure that the TPD8S300 will not impede standard USB operation.

The $0\ \Omega$ resistors R2 and R3 allow the user to determine whether the TPD8S300 dead battery resistors are active. By default, the resistors will short the CC1 and CC2 pins to the RPD_G1 and RPD_G2 pins and enable the dead battery resistor function, allowing the TPD8S300 to serve as either a UFP or a DFP port. To simulate a use case where the TPD8S300 will not function as a UFP, turn off the dead battery functionality by manually removing these resistors.

The EVM requires 3.3 V between the Vpwr (TP1) and Ground (TP3) pins to power up the TPD8S300. If the system supports USB charging from a dead battery condition, it is recommended that the EVM be powered from the protected USB Controller to show that the dead battery functionality works properly. The EVM includes a 0.1 μF (C2) capacitor to ground on the Vbias pin of the TPD8S300, a 100-k Ω (R1) resistor to Vpwr on the $\overline{\text{FLT}}$ pin, and a 1- μF (C1) capacitor to ground on the Vpwr pin. These are recommended for proper operation of the TPD8S300 in all applications.

2.1 Overvoltage Protection Testing

The EVM is designed to allow the user to ensure that the TPD8S300 can protect their system from overvoltage events. By shorting either a CC line or SBU line to a high voltage on the connector side of the EVM, the user can confirm that the TPD8S300 will protect their system. The short can be created by applying 20 V to one of the protected lines on a USB Type-C breakout board plugged into J2 or by using a custom board that discharges 20 V over a capacitor when plugged in. When the TPD8S300 sees a voltage over the overvoltage threshold on a protected line it will isolate all four CC and SBU lines within 100 ns to protect the system. Use an oscilloscope to measure the voltage on both the system side and the connector side of the EVM to view the clamped voltage that the protected system is seeing.

The waveform in [Figure 1](#), where channel one is the system side of the TPD8S300EVM and channel two is the connector side, was taken when CC1 from a TPD8S300EVM in DFP mode in series with a TPD8S300EVM was shorted to a 24-V Vbus line. The event was created by a plugging in a one foot cable to a custom USB Type-C board that simulates a faulty peripheral, pulling Vbus to 24 V and discharging the voltage to the CC line over a capacitor. Measuring the voltage over the TPD8S300EVM shows the device clamping the overvoltage event to a maximum voltage of 7.5 V and completely isolating the controller within 60 ns.

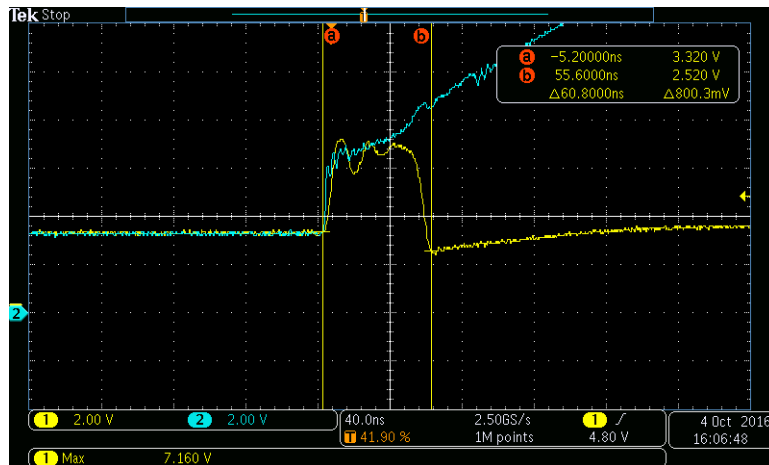


Figure 1. CC1 Line Short to 20-V Waveform

2.2 ESD Testing

Figure 2 shows the TPD8S300EVM. The EVM has four ESD test points, one on each CC and SBU line, that allow the user to use an ESD simulator in either contact or air-gap test mode to measure the ESD protection provided by the TPD8S300. Probe points one and two correspond to the SBU2 and SBU1 lines respectively. Probe points four and five correspond to the CC1 and CC2 lines respectively. To measure the ESD response on the D± lines use an ESD simulator on the respective points on a break-out board plugged into J2. Refer to the application report, [IEC 61000-4-x Tests for TI's Protection Devices](#) for specifics on proper ESD testing methods.

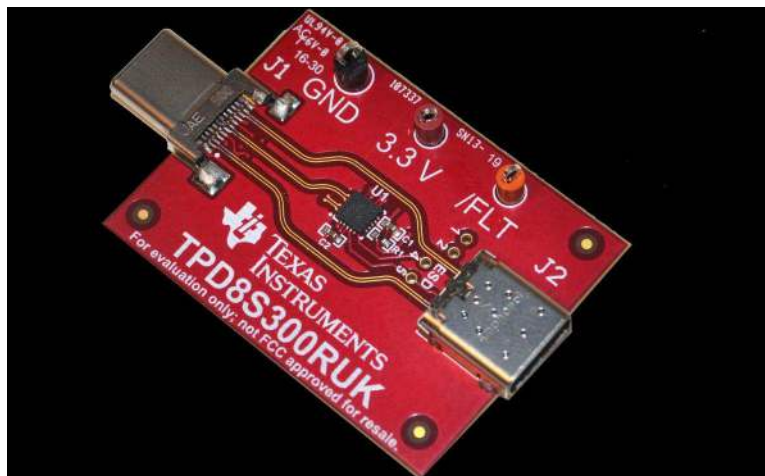


Figure 2. TPD8S300EVM

3 Schematic

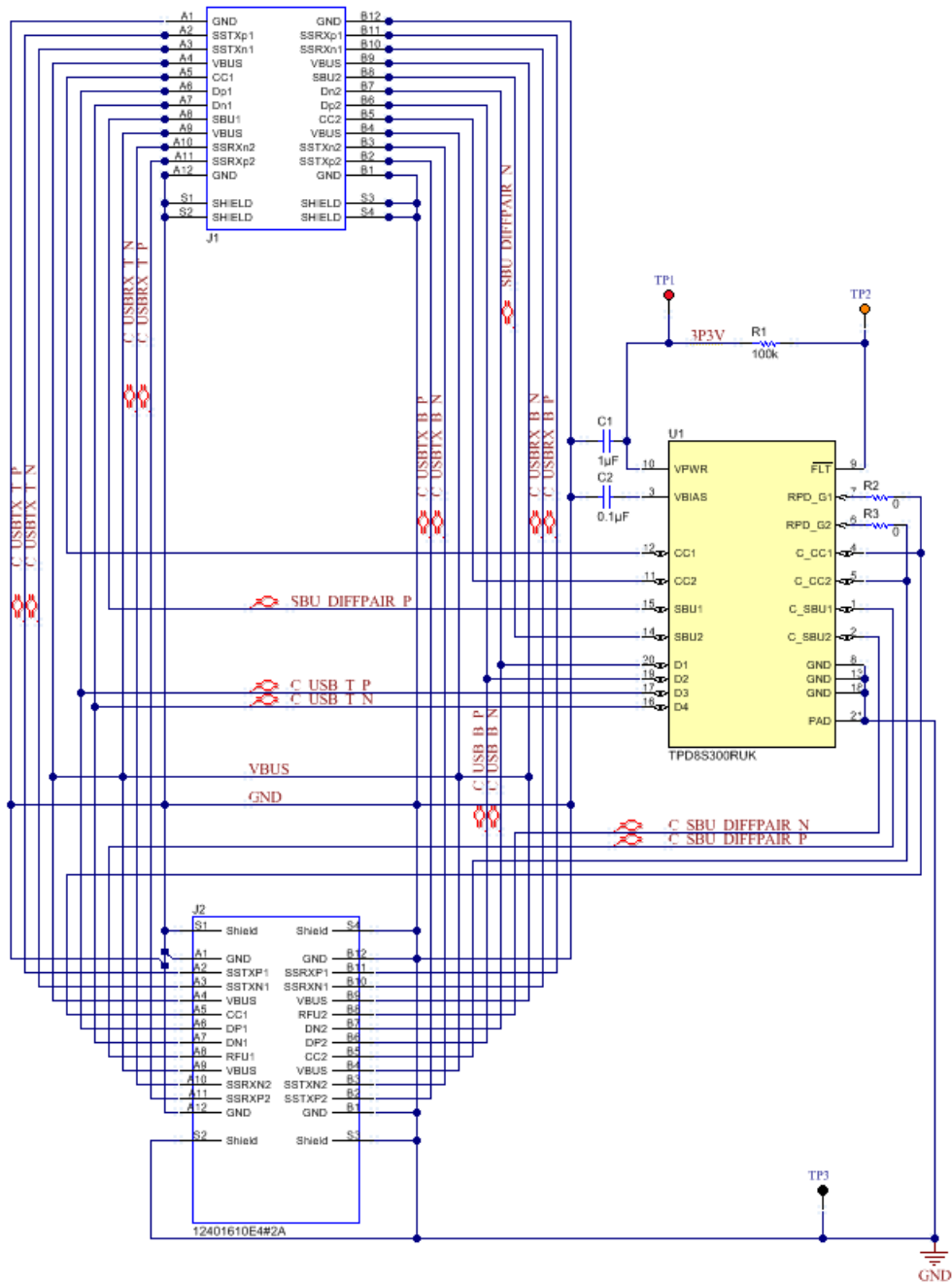


Figure 3. TPD8S300EVM Schematic

4 Board Layout

This section provides the TPD8S300EVM board layout. The TPD8S300 is an 8-layer board of FR-4 at 0.032" thickness.

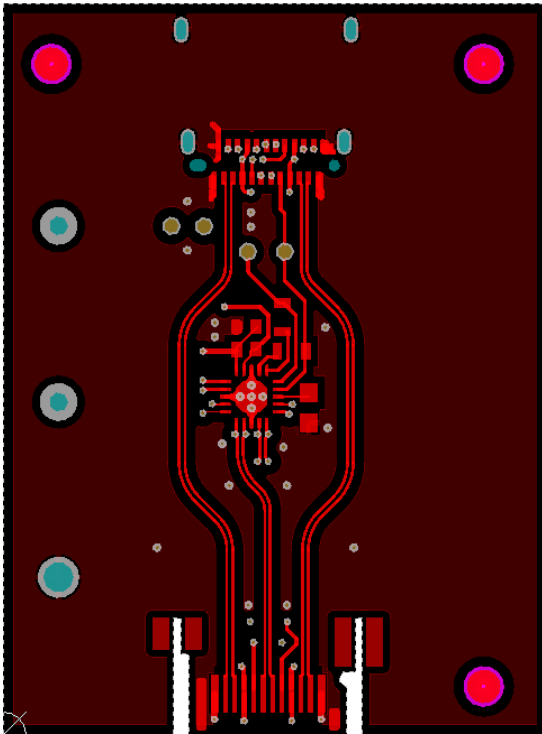


Figure 4. Top Layer

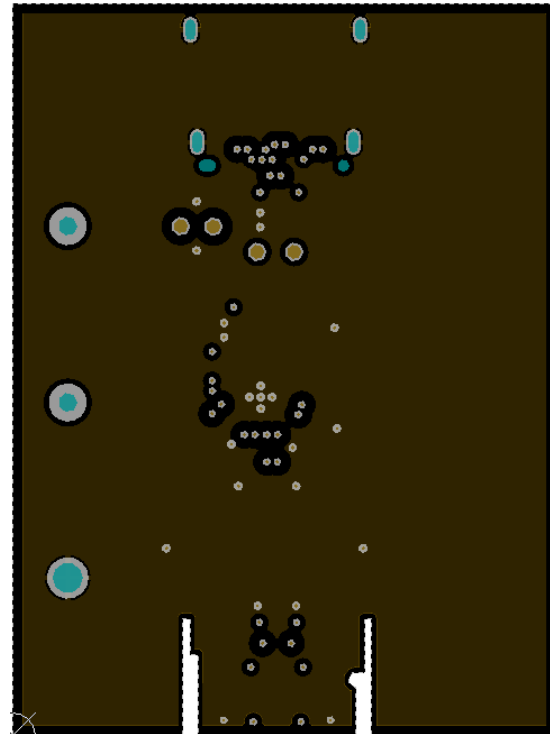


Figure 5. Ground Plane 1

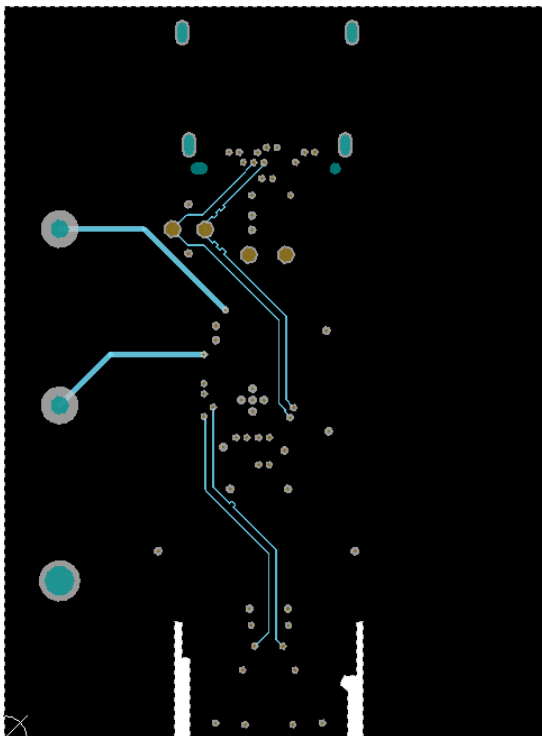


Figure 6. Midlayer 1

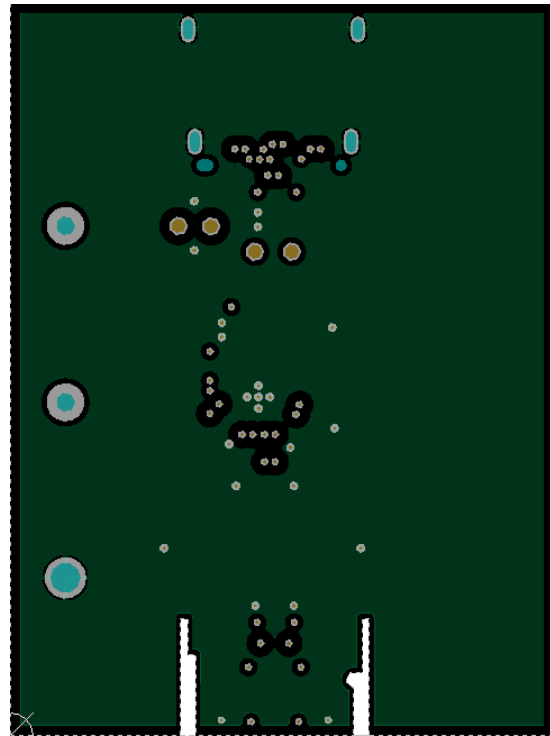


Figure 7. Ground Plane 2

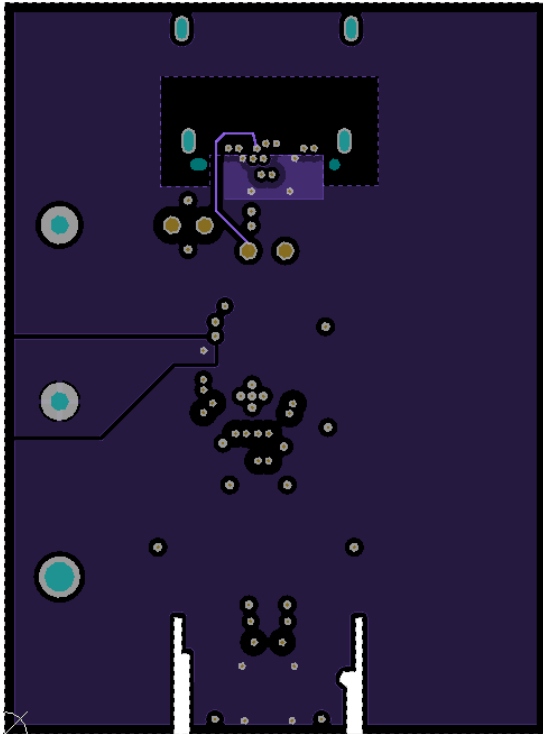


Figure 8. Power Plane 1

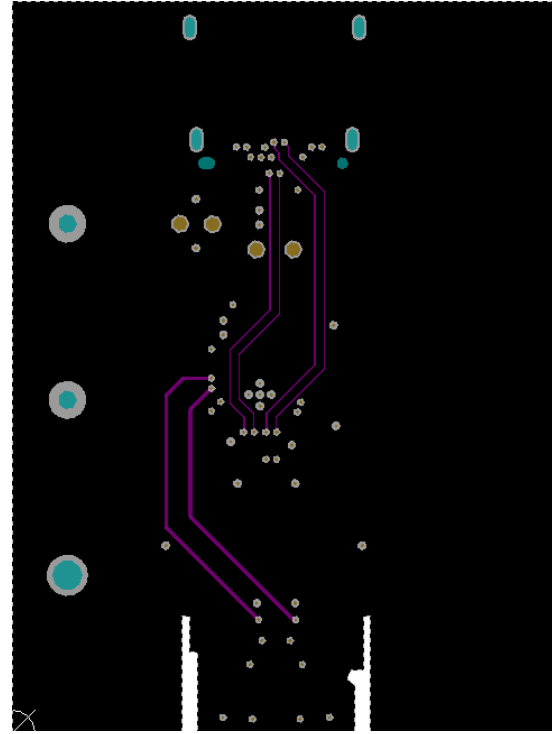


Figure 9. Midlayer 2

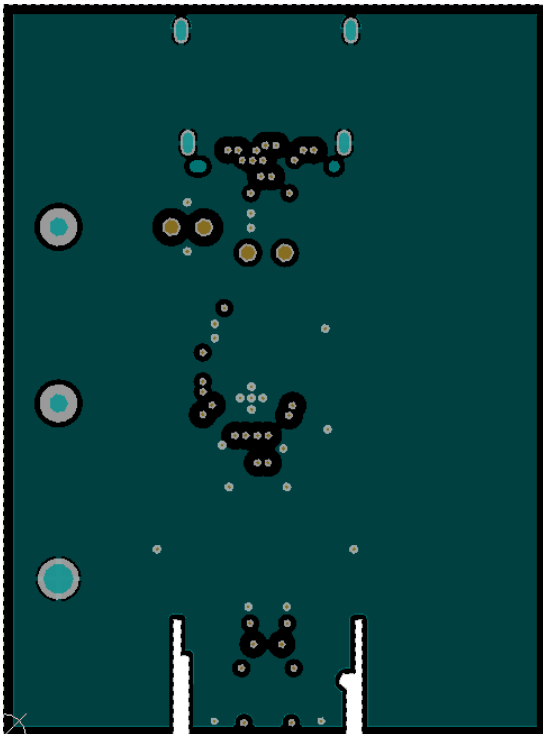


Figure 10. Ground Plane 3

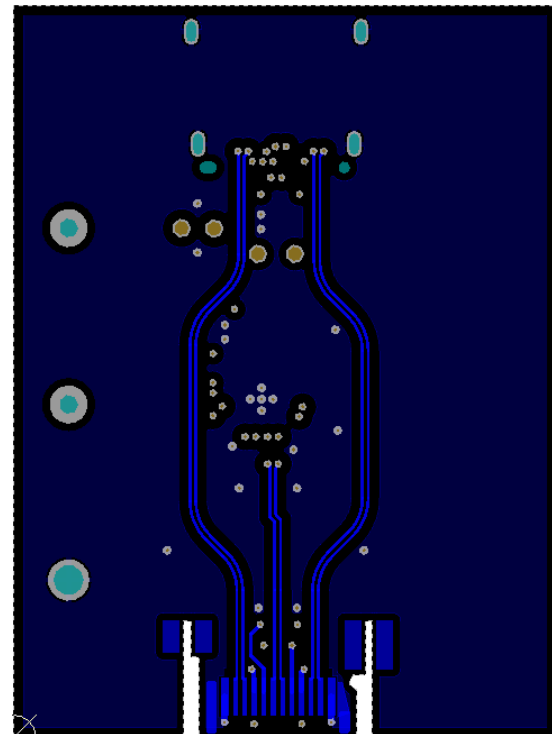


Figure 11. Bottom Layer

5 Bill of Materials

Table 1. Bill of Materials

Designator	Quantity	Value	Description	Package Reference	Part Number	Manufacturer
C1	1	1 uF	CAP, CERM, 1 uF, 35 V, ±10%, JB, 0402	0402	C1005JB1V105K050BC	TDK
C2	1	0.1 uF	CAP, CERM, 0.1uF, 50 V, ±10%, X7R, AEC-Q200 Grade 1, 0402	0402	GCM155R71H104KE02D	MuRata
J1	1		Plug, USB3.1 Type C, 24 V Position, R/A, SMT	Plug, USB3.1 Type C, 24 V Position, R/A, SMT	DX07P024MJ1R1500	JAE Electronics
J2	1		Receptacle, 0.5 mm, USB TYPE C, R/A, SMT	Receptacle, .5mm, USB TYPE C, R/A, SMT	12401610E4#2A	Amphenol Canada
R1	1	100 kΩ	RES, 100 k, 5%, 0.1 W, AEC-Q200 Grade 0, 0402	0402	ERJ-2GEJ104X	Panasonic
R2, R3	2	0	RES, 0, 5%, 0.1 W, 0603	0603	CRCW06030000Z0EA	Vishay-Dale
TP1	1		Test Point, Miniature, Red, TH	Red Miniature Testpoint	5000	Keystone
TP2	1		Test Point, Miniature, Orange, TH	Orange Miniature Testpoint	5003	Keystone
TP3	1		Test Point, Compact, Black, TH	Black Compact Testpoint	5006	Keystone
U1	1		USB Type C Interface Protector: Short-to-VBUS Over Voltage and IEC 61000-4-2 ESD Protection, RUK0020b	RUK0020B	TPD8S300RUK	Texas Instruments

IMPORTANT NOTICE

Texas Instruments Incorporated and its subsidiaries (TI) reserve the right to make corrections, enhancements, improvements and other changes to its semiconductor products and services per JESD46, latest issue, and to discontinue any product or service per JESD48, latest issue. Buyers should obtain the latest relevant information before placing orders and should verify that such information is current and complete. All semiconductor products (also referred to herein as "components") are sold subject to TI's terms and conditions of sale supplied at the time of order acknowledgment.

TI warrants performance of its components to the specifications applicable at the time of sale, in accordance with the warranty in TI's terms and conditions of sale of semiconductor products. Testing and other quality control techniques are used to the extent TI deems necessary to support this warranty. Except where mandated by applicable law, testing of all parameters of each component is not necessarily performed.

TI assumes no liability for applications assistance or the design of Buyers' products. Buyers are responsible for their products and applications using TI components. To minimize the risks associated with Buyers' products and applications, Buyers should provide adequate design and operating safeguards.

TI does not warrant or represent that any license, either express or implied, is granted under any patent right, copyright, mask work right, or other intellectual property right relating to any combination, machine, or process in which TI components or services are used. Information published by TI regarding third-party products or services does not constitute a license to use such products or services or a warranty or endorsement thereof. Use of such information may require a license from a third party under the patents or other intellectual property of the third party, or a license from TI under the patents or other intellectual property of TI.

Reproduction of significant portions of TI information in TI data books or data sheets is permissible only if reproduction is without alteration and is accompanied by all associated warranties, conditions, limitations, and notices. TI is not responsible or liable for such altered documentation. Information of third parties may be subject to additional restrictions.

Resale of TI components or services with statements different from or beyond the parameters stated by TI for that component or service voids all express and any implied warranties for the associated TI component or service and is an unfair and deceptive business practice. TI is not responsible or liable for any such statements.

Buyer acknowledges and agrees that it is solely responsible for compliance with all legal, regulatory and safety-related requirements concerning its products, and any use of TI components in its applications, notwithstanding any applications-related information or support that may be provided by TI. Buyer represents and agrees that it has all the necessary expertise to create and implement safeguards which anticipate dangerous consequences of failures, monitor failures and their consequences, lessen the likelihood of failures that might cause harm and take appropriate remedial actions. Buyer will fully indemnify TI and its representatives against any damages arising out of the use of any TI components in safety-critical applications.

In some cases, TI components may be promoted specifically to facilitate safety-related applications. With such components, TI's goal is to help enable customers to design and create their own end-product solutions that meet applicable functional safety standards and requirements. Nonetheless, such components are subject to these terms.

No TI components are authorized for use in FDA Class III (or similar life-critical medical equipment) unless authorized officers of the parties have executed a special agreement specifically governing such use.

Only those TI components which TI has specifically designated as military grade or "enhanced plastic" are designed and intended for use in military/aerospace applications or environments. Buyer acknowledges and agrees that any military or aerospace use of TI components which have **not** been so designated is solely at the Buyer's risk, and that Buyer is solely responsible for compliance with all legal and regulatory requirements in connection with such use.

TI has specifically designated certain components as meeting ISO/TS16949 requirements, mainly for automotive use. In any case of use of non-designated products, TI will not be responsible for any failure to meet ISO/TS16949.

Products

Audio	www.ti.com/audio
Amplifiers	amplifier.ti.com
Data Converters	dataconverter.ti.com
DLP® Products	www.dlp.com
DSP	dsp.ti.com
Clocks and Timers	www.ti.com/clocks
Interface	interface.ti.com
Logic	logic.ti.com
Power Mgmt	power.ti.com
Microcontrollers	microcontroller.ti.com
RFID	www.ti-rfid.com
OMAP Applications Processors	www.ti.com/omap
Wireless Connectivity	www.ti.com/wirelessconnectivity

Applications

Automotive and Transportation	www.ti.com/automotive
Communications and Telecom	www.ti.com/communications
Computers and Peripherals	www.ti.com/computers
Consumer Electronics	www.ti.com/consumer-apps
Energy and Lighting	www.ti.com/energy
Industrial	www.ti.com/industrial
Medical	www.ti.com/medical
Security	www.ti.com/security
Space, Avionics and Defense	www.ti.com/space-avionics-defense
Video and Imaging	www.ti.com/video

TI E2E Community

e2e.ti.com