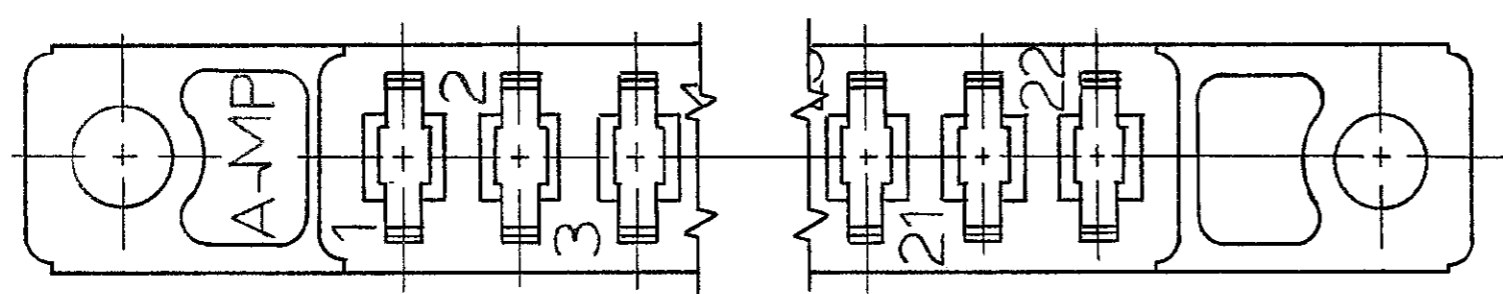
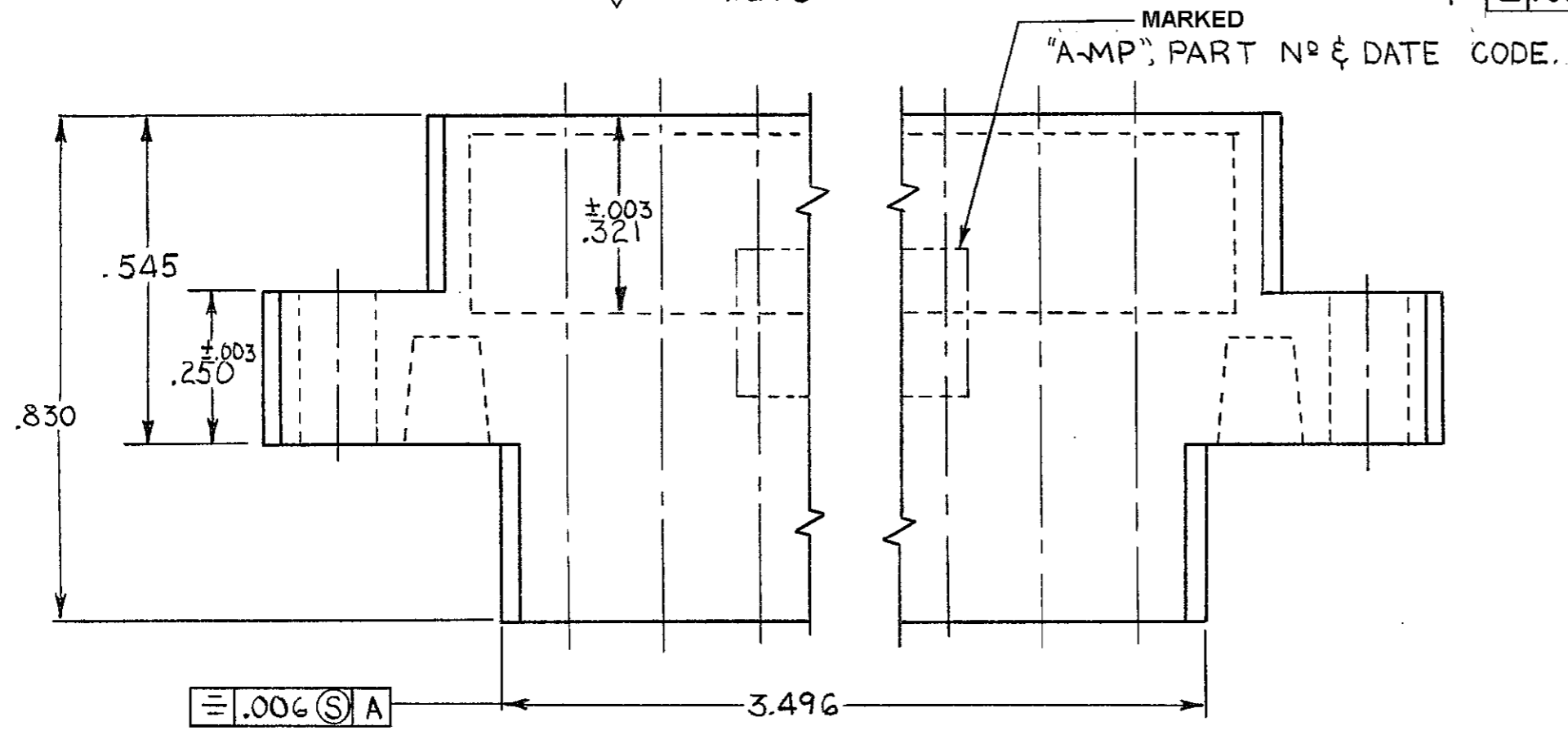
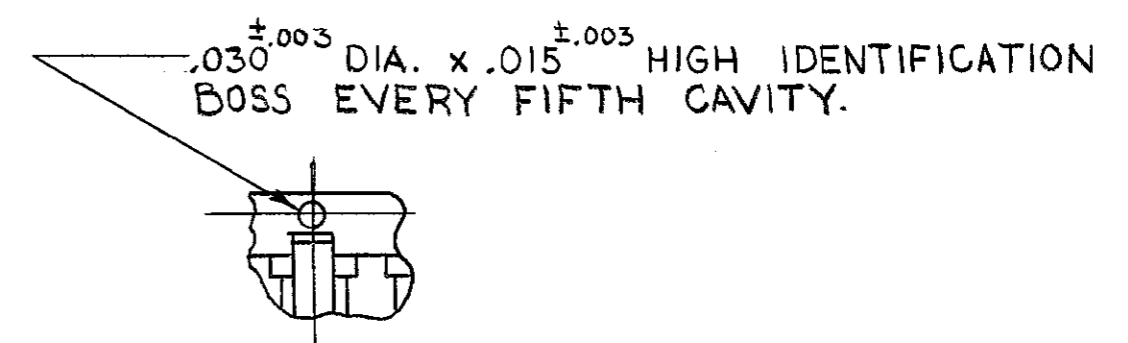
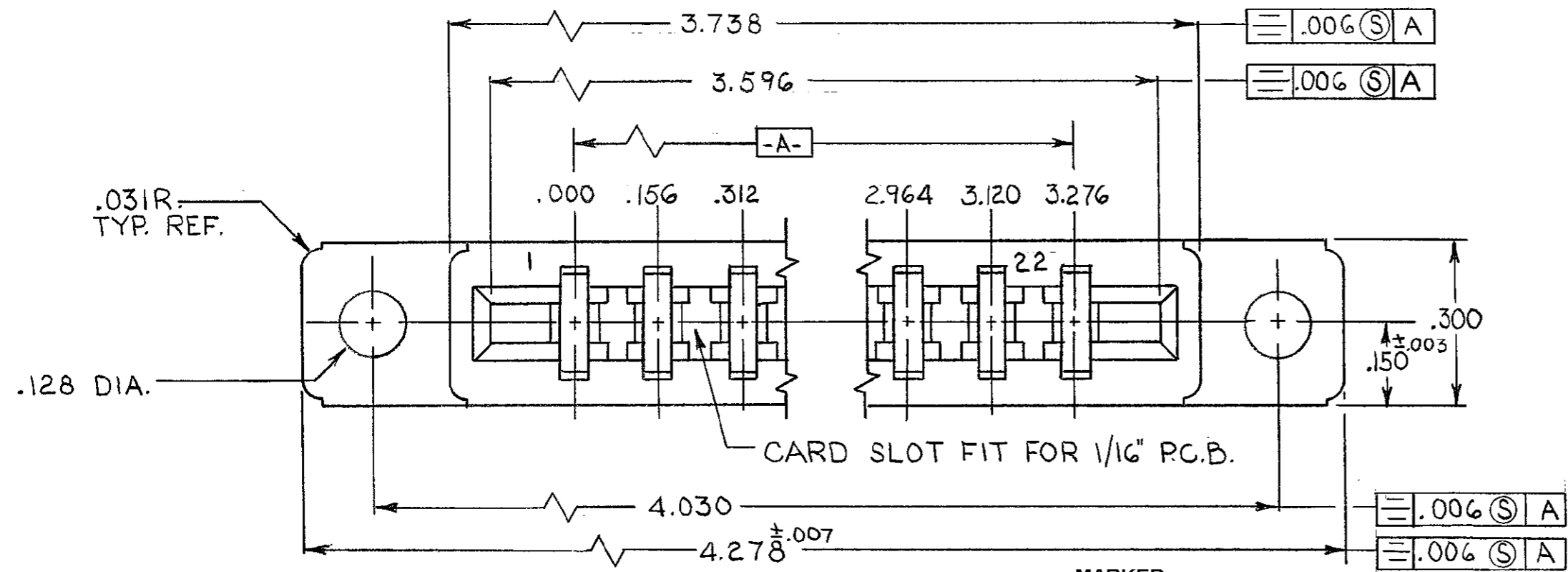


THIS DRAWING IS UNPUBLISHED. RELEASED FOR PUBLICATION JUNE 16, 1967. © COPYRIGHT 1967 BY AMP INCORPORATED, HARRISBURG, PA. ALL INTERNATIONAL RIGHTS RESERVED. AMP PRODUCTS MAY BE COVERED BY U.S. AND FOREIGN PATENTS AND/OR PATENTS PENDING.

REVISIONS						
P	F	ZONE	LTR	DESCRIPTION	DATE	APPROVED
✓			G	REDRAWN/ADO314	5-9-84	SR
✓			H	REV PER 0010-1301-94	11/2/94	SR
			J	REV PER EC 0G3C-233-01	08OCT01	MM



1. USE ON CONTACT KEYING PLUG NO 583283
2. USE CONTACT NO 583259
3. GLASS FILLED NYLON, COLOR: BLACK, OR GLASS FILLED POLYESTER, COLOR: BLACK.

AS SHOWN	583282-1
REMARKS	PART NO

UNLESS OTHERWISE SPECIFIED DIMENSIONS ARE IN INCHES. TOLERANCES ON: DECIMALS ± .005 ANGLES ± .005	CONTRACT NO	AMP AMP INCORPORATED Harrisburg, Pa. 17105		
	MATERIAL			DR <i>S. Roy</i> 5-8-84 CHK <i>H.W. Ross</i> 8/16/84 APPD <i>Howard Ross</i> 8/16/84 APPD <i>D. B. M.</i> 8/16/84 DSGN APPD OTHER APPD
FINISH <i>//</i>	NAME HOUSING-MODIFIED FORK 22 POS., .156 CENTERS WITH EGGCRATE	SIZE C	FSCM NO 00779	DRAWING NO 583282
	SCALE 4:1	SHEET 1 OF 1		

583282