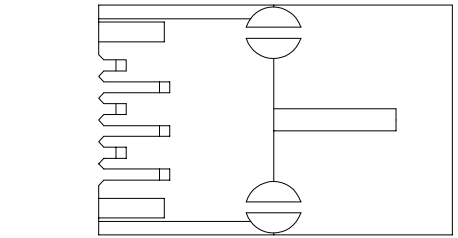
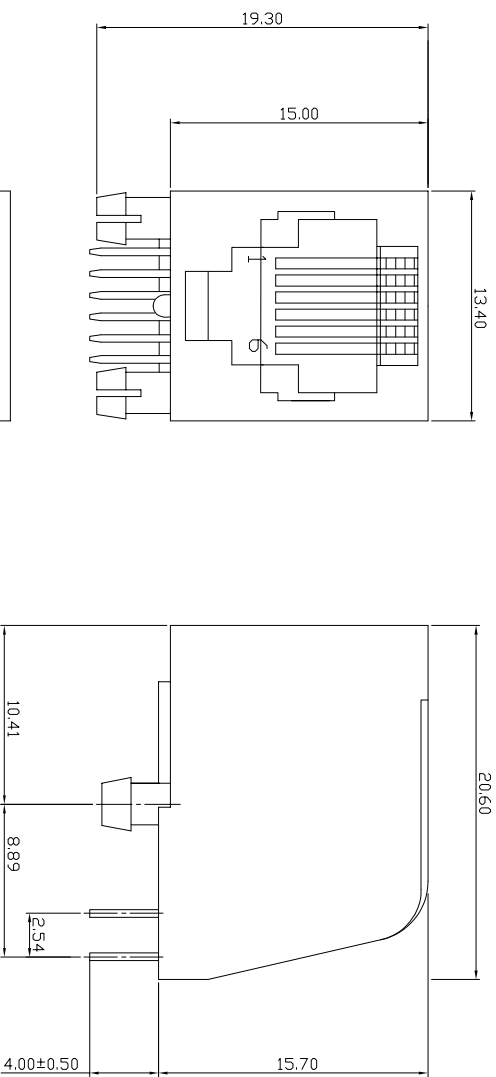


A	1	2	3	4	5	6	7										
B	1	2	3	4	5	6	7										
C	1	2	3	4	5	6	7										
D	1	2	3	4	5	6	7										
E																	
F																	
G																	
H																	



PCB LAYOUT
(Top View)

- Specification:**
- Electrical Char**
Insulation Resistance: 500MΩ min. 500V DC for 1 minute
Contact Resistance: 30mΩ max.
Rating Current: 1.5A max.
Rating Voltage: 150V AC
Dielectric Voltage: 1000 Vrms at 1MA 60 sec. min.
 - Physical Char**
Housing: PBT Glass filled (UL 94V-0) Color: Black
Soldering Temperature: 235°C for 5 sec.
Sprng Wire: 0.35mm Dia Phosphor Bronze
6u" Gold plating over Nickel
Temperature Range: -40°C to +85°C
Durability: 750 mating cycles min.
 - Packing: Tray**

RoHS compliant

Unit:mm

Scale	Free	Free	Id.	Modification	Date	Name	Date	Name	Customer-No.	Drawing-No.	Rev
TOLERANCE			①	Drawn	04.08.2016	Winnie				ASSMANN WSW-No.	
.XX	±0.20									A-2004-1-4-N-R	
.XXX	±0.13										
.XXXX	±0.05										
DIM	TOL										
Angle	+0°30'										

ASSMANN
WSW components

Drawing-No. ASS 7321 CO rev00
Replace SHEET