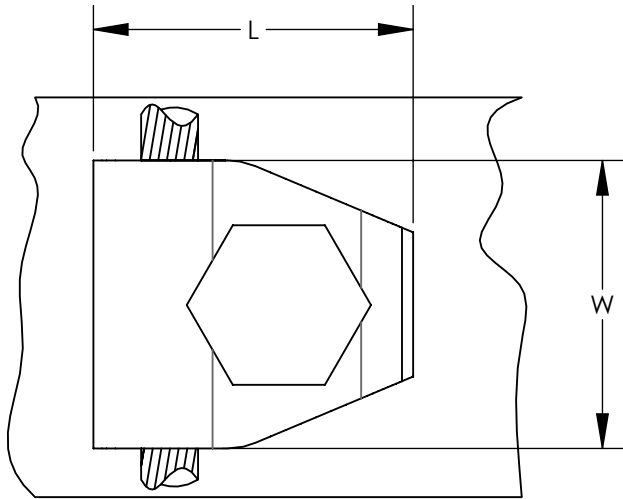
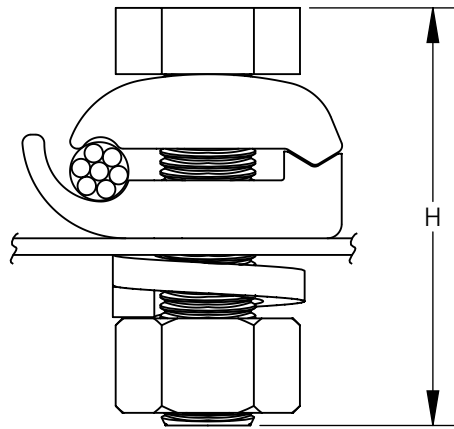


THIS COPY IS PROVIDED ON A RESTRICTED BASIS AND IS NOT TO BE USED IN ANY WAY DETRIMENTAL TO THE INTERESTS OF PANDUIT CORP.



NOTES:

1. MADE FROM HIGH COPPER CONTENT ALLOY. FURNISHED WITH FULL THREADED SILICON BOLT, NUTS, AND LOCKWASHERS.
2. THESE CONNECTORS ARE UL LISTED FOR GROUNDING AND BONDING, AND DIRECT BURIAL APPLICATIONS.
3. SEE www.PANDUIT.com FOR PACKAGE QUANTITIES.



PANDUIT PART NUMBER	FIGURE	CONDUCTOR RANGE	DIMENSIONS IN [mm] +/- .1 [2.5]			BOLT DIA.
			L	W	H	
GM-2-Q	1	4 SOL - 2/0 STR	1.63 [41.3]	1.13 [28.6]	1.75 [44.5]	3/8"
GM-3-Q	1	2/0 SOL - 250 kcmil	1.88 [47.6]	1.50 [38.1]	2.00 [50.8]	1/2"

REV	DATE	BY	CHK	APR	DESCRIPTION	ECN
04	11/15	JHNU	JHNU	RGB	REVISED WIRE RANGE FOR GMS-3-Q: 2/0 SOL WAS 2/0 STR	N41169BB-C41169

TITLE BRONZE GROUND CLAMP GM SERIES CUSTOMER DRAWING			
ITEM REVISION NAME N41169BB/04		PANDUIT	
DATASET FILE NAME N41169BB-C41169/04.SLDDRW			
UNLESS OTHERWISE SPECIFIED, DIMENSIONAL TOLERANCES ARE: IN [mm] .X ± .XX ±		MATERIAL SEE NOTES	
DRAWN BY ED		DATE 10/95	SCALE N/A
THIRD ANGLE PROJECTION		DRAWING NUMBER C41169	
SHEET 1 OF 1		SIZE A	