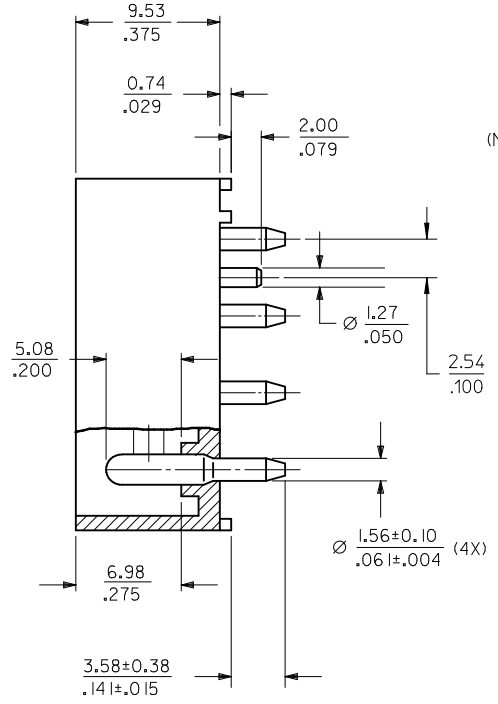
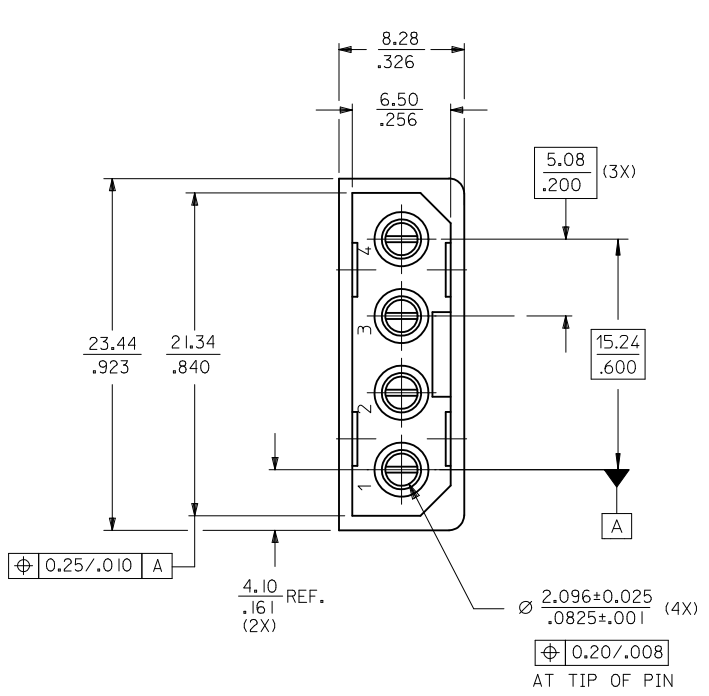
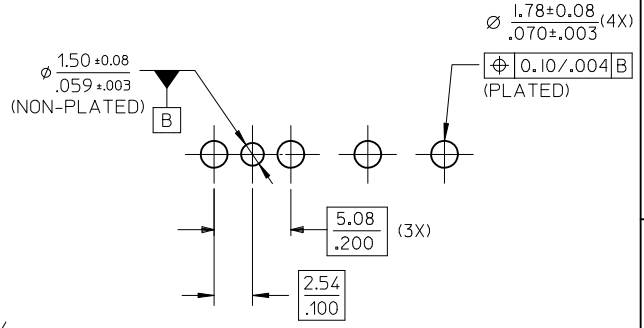


| | |
|------------|---------------|
| MAT'L NO. | ENG NO. |
| 15-24-4744 | A-8981-4V7-LF |



RECOMMENDED PCB HOLE LAYOUT



- NOTES :
1. PLATING
POSTPLATE 0.00254/0.000100 MIN. TIN
OVER 0.00127/0.000050 MIN. NICKEL OVERALL.
 2. PART TO MATE WITH HOUSING 8981-4P2
AND TERMINAL 8980-3*.
 3. PRODUCT SPEC PS-8981-4V4/4R1-P APPLIES.
 4. MATERIAL:
HOUSING - PCT, GLASS FILLED, UL94V-0
COLOR BLACK
TERMINAL - PHOS BRONZE

| | | | | | | |
|---|--|---|-----------------|---|--------------|------------------------|
| ADD PEG DIMENSION EC NO: S2010-0692 DRWN:SKANG 2010/02/11 CHKD:ATSEE 2010/02/18 APPR:MLONG 2010/02/19 | QUALITY SYMBOLS | GENERAL TOLERANCES (UNLESS SPECIFIED) | DIMENSION STYLE | SCALE | DESIGN UNITS | THIRD ANGLE PROJECTION |
| | ▽=0 ∇=0 | mm INCH 4 PLACES ± --- ± --- 3 PLACES ± --- ± .008 2 PLACES ± 0.20 ± --- 1 PLACE ± --- ± --- ANGULAR ± 3 ° | MM/IN | NTS | METRIC | |
| | DESCRIPTION | DRAWN BY | DATE | TITLE | | |
| | | SKTOH | 1992/04/28 | POWER CONNECTOR, 4 CKTS VERTICAL MOUNT | | |
| | CHECKED BY | DATE | MATERIAL NO. | | | |
| | GWANG | 1992/04/28 | SD-8981-4V7 | | | |
| | APPROVED BY | DATE | SHEET NO. | | | |
| | MLONG | 2010/02/18 | 1 OF 1 | | | |
| D2 | DRAFT WHERE APPLICABLE MUST REMAIN WITHIN DIMENSIONS | | SIZE | THIS DRAWING CONTAINS INFORMATION THAT IS PROPRIETARY TO MOLEX INCORPORATED AND SHOULD NOT BE USED WITHOUT WRITTEN PERMISSION | | |
| | | | A3 | | | |