

**Contact assignment:**

- |            |                |
|------------|----------------|
| 1 - brown  | 7 - black      |
| 2 - blue   | 8 - grey       |
| 3 - white  | 9 - red        |
| 4 - green  | 10 - violet    |
| 5 - pink   | 11 - grey-pink |
| 6 - yellow | 12 - red-blue  |

**Technical specification :**

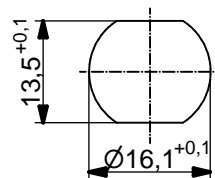
- |                        |                           |
|------------------------|---------------------------|
| Rated voltage:         | 30 V                      |
| IEC 61076-2-101        |                           |
| Current rating:        | 1,5 A at 40°C             |
| IEC 61076-2-101        |                           |
| Insulation resistance: | >=100 MΩ                  |
| IEC 60512              |                           |
| Pollution degree:      | 3/2                       |
| IEC 60664-1            |                           |
| Degree of protection:  | IP 67, in mated condition |
| IEC 60529              |                           |
| Temperature range:     | -30°C ... +80°C           |
| Mating cycles:         | >=100                     |
| IEC 60512-9a           |                           |

**Materials:**

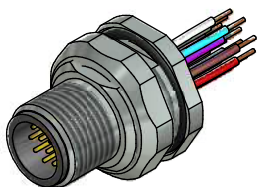
- |                  |                           |
|------------------|---------------------------|
| Contact:         | CuZn                      |
| Contact plating: | Nickel, gold plated       |
| Contact carrier: | PBT GF, UL 94             |
| Sealing chassis: | NBR                       |
| Counter nut:     | CuZn, nickel plated       |
| Socket housing:  | CuZn, nickel plated       |
| Grouting:        | Polyurethane-resin, UL 94 |

**Installation specification:**

- |                          |   |
|--------------------------|---|
| Recommended torque:      | 1-1,2 Nm  |
| Conec installation tool: | Torque wrench:<br>36-000200<br>Insert across flats 19:<br>36-000250 |



Minimum wall thickness 1,5mm, alternativ panel cut-out d=16,1



Part no:	Description:	Pos	Length L:	Wire:
43-01344	SAL - 12 - FSH12 - 0,5	12	0,5m	AWG 26 PVC, UL
43-xxxxx	SAL - 12 - FSH12 - ...	12	x	

DO NOT ALTER CAD DRAWING BY HAND Directive 2002/95/EC RoHS compliant	Index: c 30.11.12 MG Ä4555 Data sheet revised, technical specification changed, materials corrected	dim. in mm		<b>title:</b> Male socket M12x1 with wire, backmounting	
		date	name		
	tolerance of wire: L ≤ 0,5m: L + 20mm L > 0,5m: L + 4%	drawn	17.10.08	Fromm	<b>dwg no:</b> 43K1A776
	general tolerance: 0 ± 0,50mm 0,0 ± 0,25mm 0,00 ± 0,10mm	appd.	17.10.08	Mankopf	
		<b>part no:</b> see table			
THIS DRAWING MAY NOT BE COPIED OR REPRODUCED IN ANY WAY, AND MAY NOT BE PASSED ON TO A THIRD PARTY WITHOUT WRITTEN PERMISSION. OWNERSHIP AND COPYRIGHT OF CONEC GmbH					