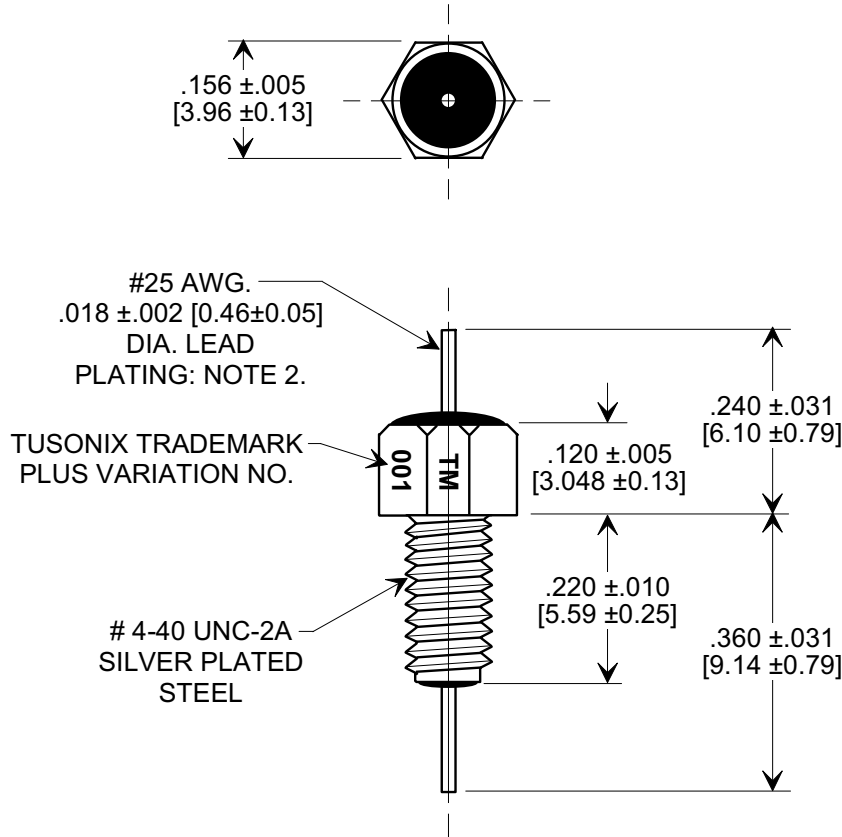
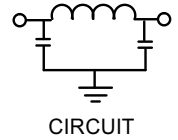
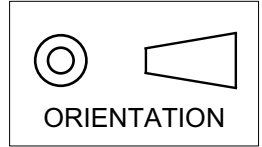


**MARKETING SALES DRAWING**

**DIMENSIONS IN INCHES - DO NOT SCALE THIS DRAWING**  
**DIMENSIONS IN METRIC - [ ]**

Electrical Testing  
 per Tusonix standard  
 test plans and Mil-Std-202  
 Test Methods.



**NOTES:**

1. TUSONIX STANDARD PART NUMBER: 4261-001.  
 TUSONIX RoHS COMPLIANT PART NUMBER: 4261-001 LF.  
 CUSTOMER MUST SPECIFY STANDARD OR RoHS PART NUMBER WHEN ORDERING.
2. LEAD FINISH: STANDARD PART #: 60/40 SOLDER PLATED. RoHS PART #: SILVER PLATED.
3. PART MARKING: TUSONIX TRADEMARK AND VARIATION.  
 STANDARD PART: BLACK INK. RoHS PART: GREEN INK.

5,500	50 VDC	3 A	10 G Ω	125 VDC	7	14	30	55	70	70
MIN. CAP.(pf)	+125 °C	CURRENT	IR (MIN.) @ 100 VDC	DWV	3 MHz	10 MHz	30 MHz	100 MHz	300 MHz	1 GHz
	DC WORKING VOLTAGE				MINIMUM NO LOAD INSERTION LOSS (dB) AT 25°C PER MIL-STD-220					

X-2015 Rev-0	<b>REVISION RECORD</b>			--TOLERANCES-- Unless Otherwise Specified	Title		
	Original Release C.O. <b>6611</b>	<b>1</b>			<b>MULTI LAYER BUSHING STYLE EMI FILTER</b>		
	DIM'S REV. TITLE CHGD. E.C. 5-26-92	<b>6667</b>	RDN TO COMP FMT. S.M. 06-19-02	DECIMAL ± .031 [0.79]	Drawn	S. M. 06-19-02	Scale <b>4 X</b>
	<b>20020604-3-02</b>	<b>2</b>	ADDED NOTES 1-3. S.M. 04-27-05	ANGLES ±	Approved	J.Mc. 06-19-02	
<b>20050420-2-02</b>	<b>3</b>		<b>TUSONIX</b> TUCSON, ARIZONA	<b>A</b>	<b>4261-001</b>		