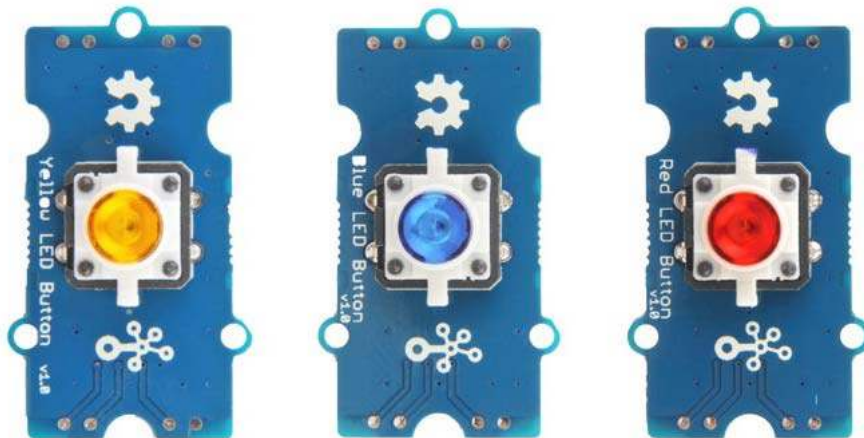


## Grove - Red LED Button SKU 111020044

### Description



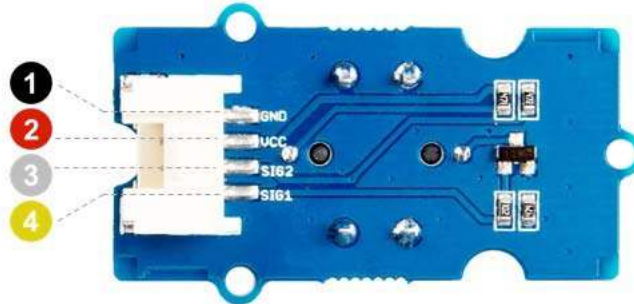
The Grove - LED Button is composed of Grove - Yellow Button, Grove - Blue LED Button and Grove - Red LED Button.

The Grove - Red LED Button is stable and reliable with 100 000 times long life. With the build-in LED, you can apply it to many interesting projects, it is really useful to use the LED to show the status of the button. We use a high-quality N-Channel MOSFET to control the LED to ensure the high switching speed and a low consumption. All in all, you want some really awesome shining button? Here you go ..

## Features

- Long operating life
- Easy to use
- Grove Digital interface

## Pin Map



- ❶ GND: connect this module to the system GND
- ❷ VCC: you can use 5V or 3.3V for this module
- ❸ SIG2: output the button status, default high
- ❹ SIG1: input the LED control signal, default low

## Show demo

### Technical Details

|                    |                    |
|--------------------|--------------------|
| Dimensions         | 40mm x 20mm x 16mm |
| Weight             | G.W 10.30g         |
| Battery            | Exclude            |
| Operating voltage  | 3.3V/5V            |
| Press Resistance   | <100mΩ             |
| Release Resistance | >100MΩ             |

Part List

|                        |   |
|------------------------|---|
| Grove - Red LED Button | 1 |
| Grove Cable            | 1 |

ECCN/HTS

|        |            |
|--------|------------|
| ECCN   | EAR99      |
| HSCODE | 8536500000 |

