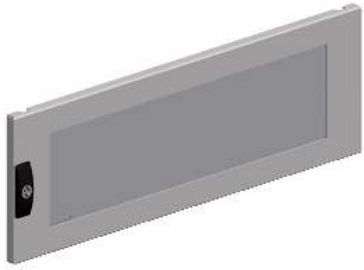


Product data sheet

Specifications



Spacial SF transparent door - 600x800 mm

NSYMPD68T

Main

Range	Spacial
Accessory / separate part category	Enclosure accessory
Product or component type	Partial door
Application	Compartmentalised application
For enclosure nominal dimensions	-
Mounting location	Front
Range compatibility	Spacial (Spacial SFM)
Device composition	2 escutcheon lock and 3 mm double bar insert 1 partial door 2 vertical reinforcement frame 3 hinges
Quantity per set	Set of 1

Complementary

Material	Door: Securit glass Door: sheet steel
Colour	Grey (RAL 7035)
Surface finish	Epoxy-polyester powder
Lock type	Lock 3 mm double bar
Number of locks	2
Door type	External transparent
Door opening side	Reversible (120 °)
Height	600 mm nominal: 594 mm real:
Width	800 mm nominal: 769 mm real:

Packing Units

Unit Type of Package 1	PCE
Number of Units in Package 1	1
Package 1 Height	7.0 cm
Package 1 Width	60.0 cm

Package 1 Length	78.0 cm
Package 1 Weight	7.1 kg
Unit Type of Package 2	PAM
Number of Units in Package 2	20
Package 2 Height	80.0 cm
Package 2 Width	100.0 cm
Package 2 Length	120.0 cm
Package 2 Weight	164.64 kg

Offer Sustainability

Sustainable offer status	Green Premium product
REACH Regulation	REACH Declaration
EU RoHS Directive	Pro-active compliance (Product out of EU RoHS legal scope) EU RoHS Declaration
Mercury free	Yes
China RoHS Regulation	China RoHS declaration Product out of China RoHS scope. Substance declaration for your information
RoHS exemption information	Yes
Environmental Disclosure	Product Environmental Profile

Contractual warranty

Warranty	18 months
----------	-----------

Recommended replacement(s)