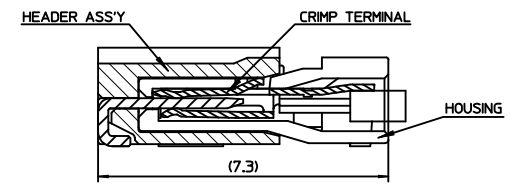
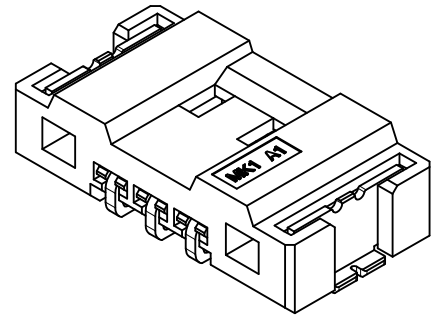


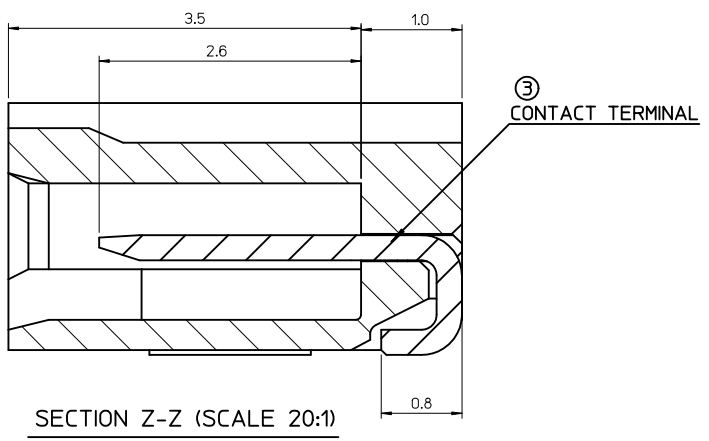
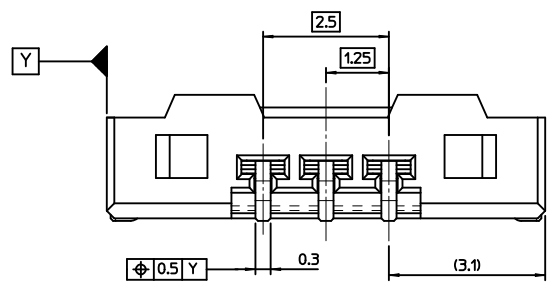
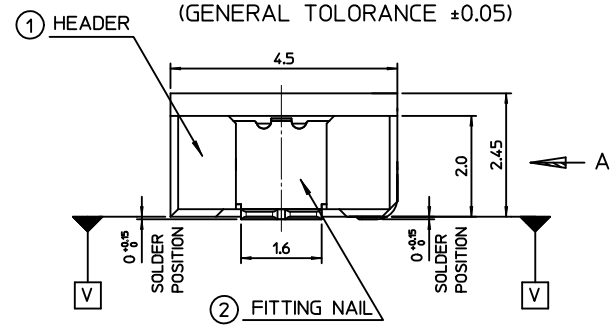
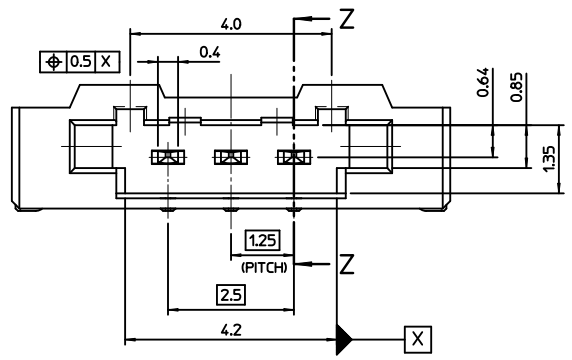
RECOMMEND PATTERN (REF.)
(GENERAL TOLERANCE ±0.05)



MATED CONDITION (REF.)

NOTE

- MATED WITH : 104085-0300
- MATERIALS
 - ① - HEADER : LCP(E130I), GLASS FILLED, UL94V-0, HALOGEN FREE, COLOR OF NATURAL
 - ② - FITTING NAIL : PHOSPHOR BRONZE, 0.2mm THICKNESS
 - ③ - CONTACT TERMINAL : POSPHOR BRONZE, 0.25mm THICKNESS
- FINISHES
 - ② - FITTING NAIL : PURE-TIN PLATING ON OVERALL.
THICKNESS 3.0µm-5.0µm
UNDER PLATING Ni OVERALL.
THICKNESS 1.25µm-3.75µm
 - ③ - CONTACT TERMINAL : PURE-TIN PLATING ON OVERALL.
THICKNESS 3.0µm-5.0µm
UNDER PLATING Ni OVERALL.
THICKNESS 1.25µm-3.75µm
- COPLANALITY OF SOLDER TAILS (PEAK TEMP. : 260°C), BEFORE & AFTER REFLOW : 0.08MAX

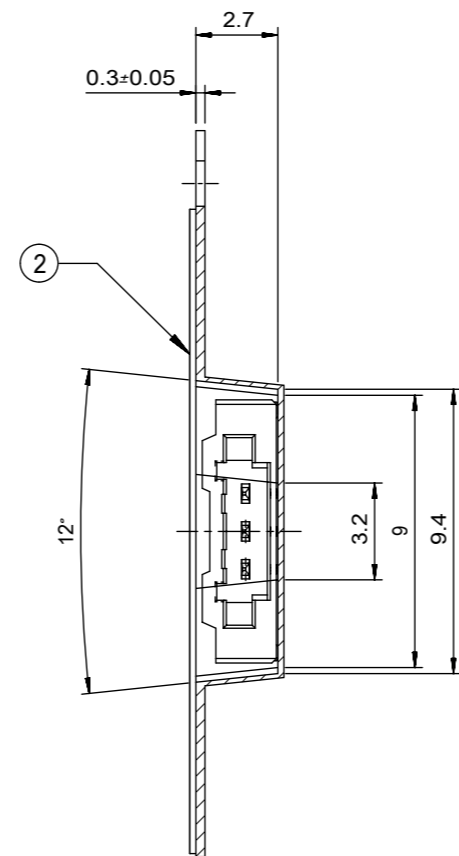
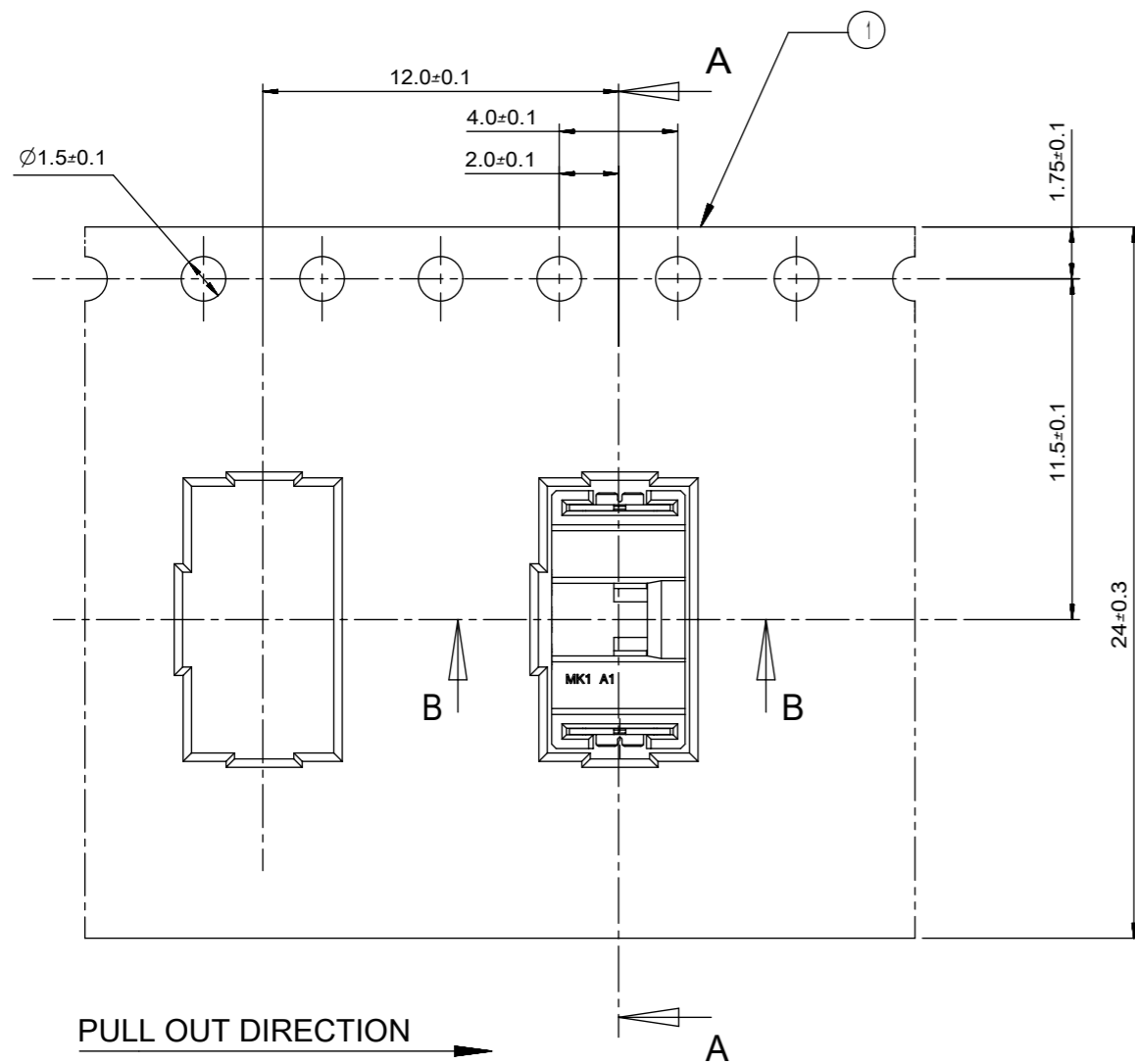


NEW RELEASED
EC NO: KOR2011-0131 2011/05/23
DRWN:CBCHIN 2011/05/23
CHKD:SH-CHU
APPR:YUNSIKKIM 2011/05/23

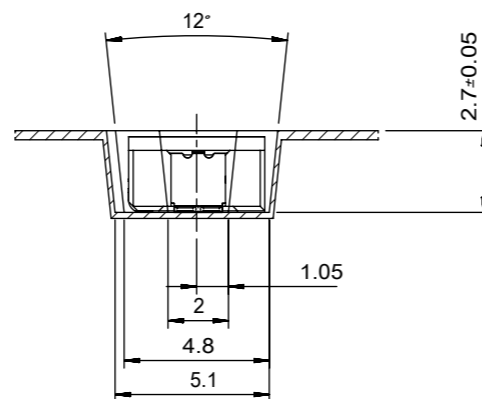
QUALITY SYMBOLS	GENERAL TOLERANCES (UNLESS SPECIFIED)	
	mm	INCH
▽=0	4 PLACES ± ---	± ---
▽=0	3 PLACES ± ---	± ---
	2 PLACES ± 0.20	± ---
	1 PLACE ± 0.25	± ---
	ANGULAR ± 1 °	

DRAFT WHERE APPLICABLE
MUST REMAIN WITHIN DIMENSIONS

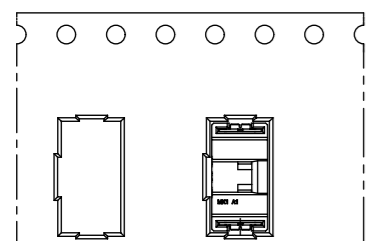
DIMENSION STYLE		SCALE	DESIGN UNITS	THIRD ANGLE PROJECTION
MM ONLY		10:1	METRIC	THIRD ANGLE PROJECTION
DRAWN BY	DATE	TITLE		
JB. JIN	2010/11/23	1.25 W-T-B CONN. HEADER ASS'Y-3P(R/A) EMBOSSED PACKAGE		
CHECKED BY	DATE	MOLEX INCORPORATED		
SH. CHU	2010/11/23	SD-104086-003		
APPROVED BY	DATE	SHEET NO.		
YUNSIKKIM	2011/05/23	1 OF 01		
MATERIAL NO.	DOCUMENT NO.	THIS DRAWING CONTAINS INFORMATION THAT IS PROPRIETARY TO MOLEX INCORPORATED AND SHOULD NOT BE USED WITHOUT WRITTEN PERMISSION		
1040860310	SD-104086-003			



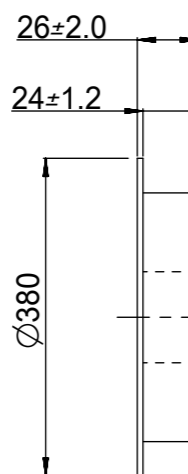
SECTION A-A



SECTION B-B



PULL OUT DIRECTION

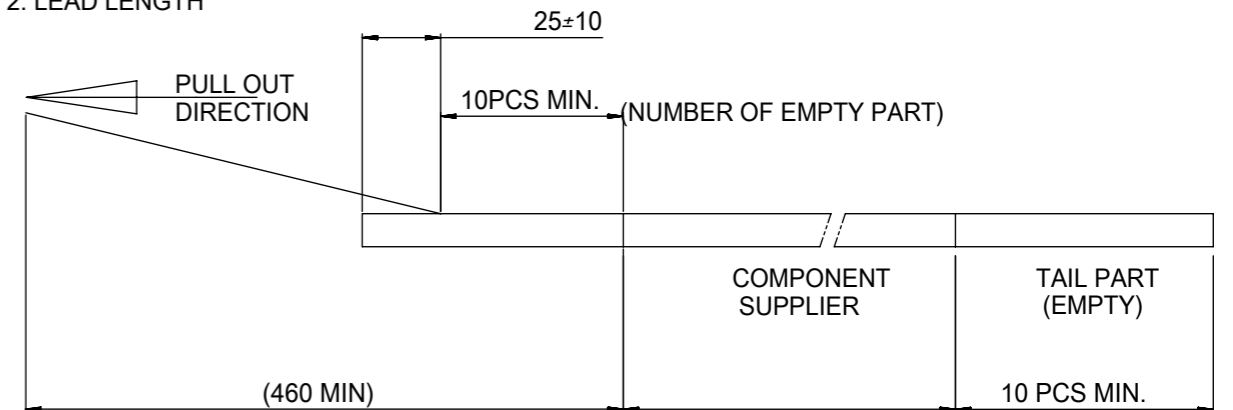


PLASTIC BOBBIN

NOTES

1. QUANTITY OF CONNECTORS : 2,000 PCS/REEL

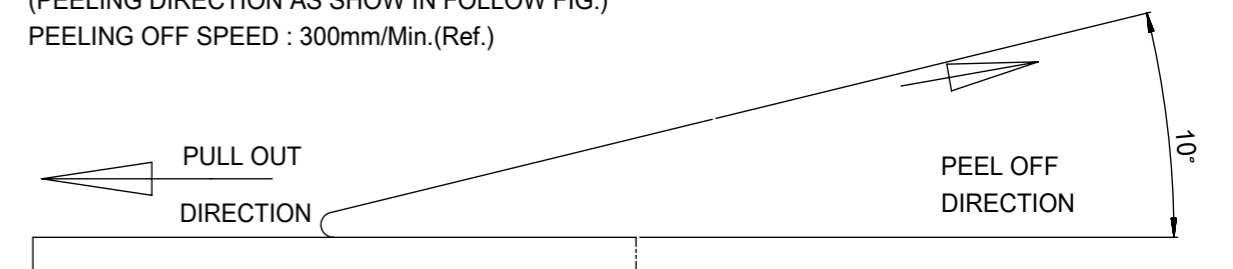
2. LEAD LENGTH



3. PEELING OFF FORCE OF COVER TAPE : 0.1N~0.59N(10.2GF~60GF)

(PEELING DIRECTION AS SHOW IN FOLLOW FIG.)

PEELING OFF SPEED : 300mm/Min.(Ref.)



4. FLASH IN ANY PORTION SHOULD BE LESS THAN 0.20mm MAX.

5. UNLESS OTHERWISE SPECIFIED INNER R0.2 MAX

6. DRAFT ANGLE 3°MAX

3	PLASTIC BOBBIN	HI P.S	WHITE
2	COVER TAPE	PET ANTISTATIC	21.3m
1	CARRIER (EMBOSS) TAPE	PET ANTISTATIC	
NO.	DESCRIPTION	MATERIAL	REMARK

SYMBOLS	THIS DRAWING CONTAINS INFORMATION THAT IS PROPRIETARY TO MOLEX ELECTRONIC TECHNOLOGIES, LLC AND SHOULD NOT BE USED WITHOUT WRITTEN PERMISSION		CURRENT REV DESC:		molex		
	DIMENSION UNITS	SCALE					
▽ = 0	mm	4:1	EC NO: 604036		1.25 W-T-B CONN.		
▽ = 0	GENERAL TOLERANCES (UNLESS SPECIFIED)		DRWN: JSSHIN 2018/09/06		HEADER ASSY-3P(R/A) EMBOSS PACKAGE		
▽ = 0	ANGULAR TOL ± 1.0°		CHK'D: SHCHU 2018/09/06		PRODUCT CUSTOMER DRAWING		
▽ = 0	4 PLACES ±		APPR: SHCHU 2018/09/06		DOCUMENT NUMBER		
▽ = 0	3 PLACES ±		INITIAL REVISION:		SD-104086-004		
▽ = 0	2 PLACES ± 0.25		DRWN: CBCHIN 2011/05/23		DOC TYPE DOC PART REVISION		
▽ = 0	1 PLACE ± 0.25		APPR: YUNSIKKIM 2011/05/23		PSD 001 B1		
▽ = 0	0 PLACES ±		DRAFT WHERE APPLICABLE MUST REMAIN WITHIN DIMENSIONS		MATERIAL NUMBER		
▽ = 0	THIRD ANGLE PROJECTION		DRAWING		CUSTOMER		
▽ = 0	A3-SIZE		SERIES		SHEET NUMBER		
	104086		1040860310		GENERAL MARKET 1 OF 1		