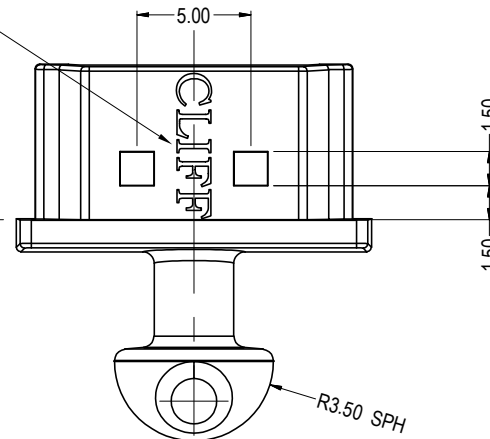
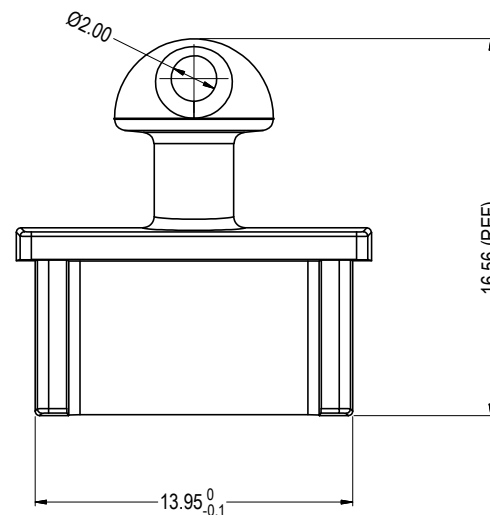
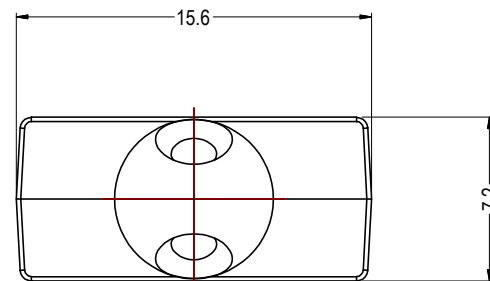
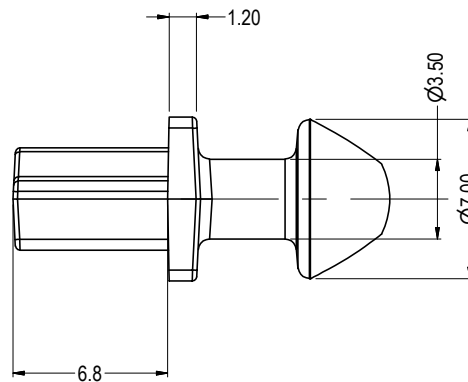
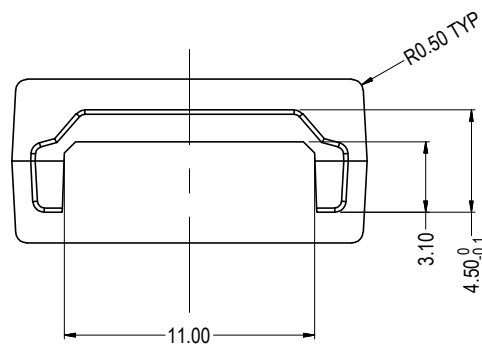


LOGO FONT: 1.50 HIGH  
BOOKMAN OLD STYLE



32 VDI TEXTURE  
ON ALL SURFACES  
BELOW THIS LINE

ISS.	AMEND	DATE
1	ISSUED	23/08/18
2	WHITE ADDED	15/11/19



PART No.	COLOUR
CP30294	BLACK
CP30294W	WHITE

NOTES:-

- PART TO BE MADE FROM 3D DATA SUPPLIED.
- GATE AND EJECTOR POSITIONS TO BE AGREED.
- PART TO BE FREE FROM FLASH, SINK MARKS AND OTHER SURFACE DEFECTS.

<b>RoHS</b> COMPLIANT
TOLERANCE NO DEC. PLACE ± 0.50 1 DEC. PLACE ± 0.20 2 DEC. PLACE ± 0.10 HOLE Ø ± 0.10 ANGLES ± 1/2° UNLESS OTHERWISE STATED
DO NOT SCALE

**Cliff Electronic Components Ltd.**  
76 Holmesthorpe Avenue, Holmesthorpe Industrial Estate,  
Redhill, Surrey, RH1 2PF, England, UK  
Tel: 01737-771375 Fax: 01737-766012 Website: www.cliffuk.co.uk

DIMENSIONS IN MILLIMETERS UNLESS OTHERWISE STATED. WORK TO DIMENSIONS. REMOVE ALL BURRS. IF IN DOUBT ASK.

3rd ANGLE PROJECTION:

MATERIAL: POLYPROPYLENE  
FINISH: 32 VDI, AS SHOWN - COLOUR SEE TABLE

TITLE: DUST COVER - HDMI

THE CONTENTS OF THIS DOCUMENT MUST NOT BE COPIED OR DISCLOSED TO A 3rd PARTY WITHOUT WRITTEN PERMISSION OF CLIFF UK. © 2018

DRAWN: NJB

APPROVED: DPJ

DRWG. No. CP30294

FORM: A4DRWGH