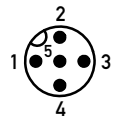
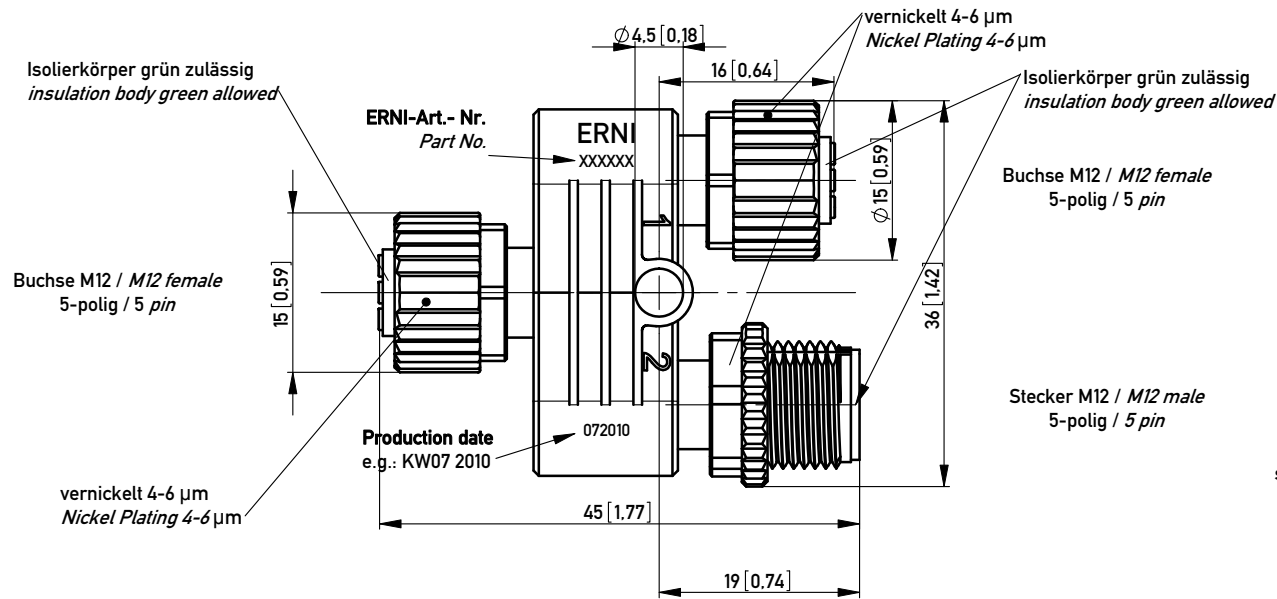
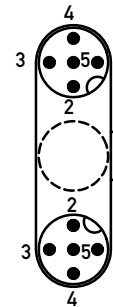


TECHNISCHE SKIZZE / Technical sketch

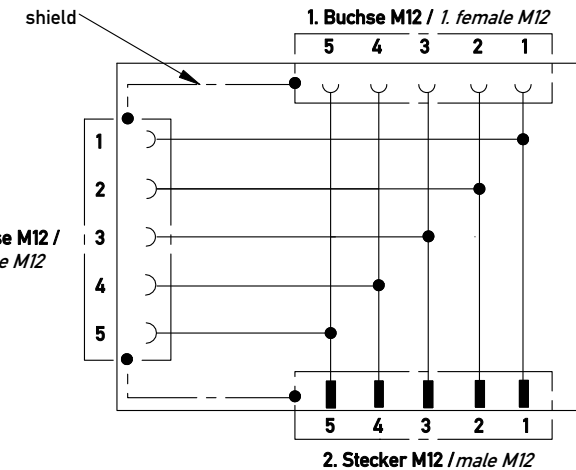


Ansicht: Steckgesicht; Kontaktbelegung /
View: mating face; pin assignment



Buchse M12 / female M12

STROMLAUFPLAN / Schematic diagram



2. Stecker M12 / male M12

BAUTEILE / FERTIGUNGSHINWEISE Piece parts / Manufacturing notices

- Aufdruck mittels Tampondruck entspr. techn. Skizze
Imprint see technical sketch
- Gute Chemikalien- und Ölbeständigkeit. Beim Einsatz aggressiver Medien ist die Materialbeständigkeit applikationsbezogen zu überprüfen.
Good chemical and oil resistance. When using aggressive media, material resistance based on application must be checked.

SPECIFICATIONS Circular Connector

Technical Specifications	Standard applic.	Value	Electrical Data	Standard applic.	Value
Type:		T-coupler M12 male - 2 x M12 female, black	Rated (nominal) voltage, max.	IEC 61-076-2-101	60 V AC/DC
Pin assignment:		5 pin / 5 pin	Rated current; per contact, max.	IEC 61-076-2-101	4 A
Coding:		A-coding	Rated impulse voltage	IEC 61-076-2-101	0.8 kV
Connection:		Screw locking M12x1 (0.6 Nm)			
Temperature range:		-25...+85°C			
Packaging:		1 piece per bag			

Materials & Finish

Contact material:		
a) male	Standard description	CuZn39Pb3F50
b) female	Standard description	CuNi25Si HV160U
Contact finish, mating zone:		
a) male	Thickness of plating	0.5 µm Au over 2 µm Ni
b) female	Thickness of plating	0.8 µm Au (partial)
Insulation material:	Standard description	Elastollan R 3000 A

Approvals

Protection class		IP67
(mated and locked)	IEC 60529	3
Pollution degree		1
Insulation category	IEC 60664-1	Yes
RoHS compliant		

Artikel-Nr. / Part No.

CAN/DeviceNet 394892

Information:	Tolerances	All Dimensions in mm (in)	Scale	2:1
All rights reserved. Only for Information. To ensure that this is the latest version of this drawing, please contact one of the ERNI companies before using.	Subject to modification without prior notice. Drawing will not be updated.	Designation		
		CCA M12, 5 pin/2 x M12, 5 pin A-coding		
	www.ERNI.com	394893		I (1/1)
Index	Date	Class		CCA

Copyright by ERNI GmbH. Proprietary notice pursuant to ISO 16016 to be observed.