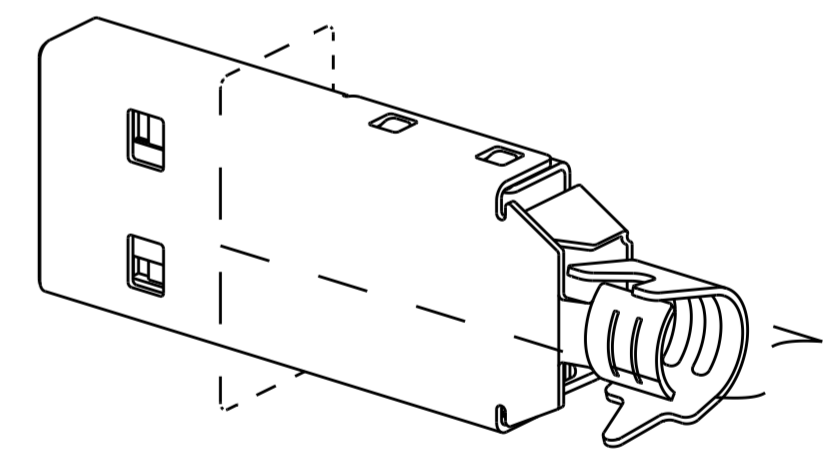
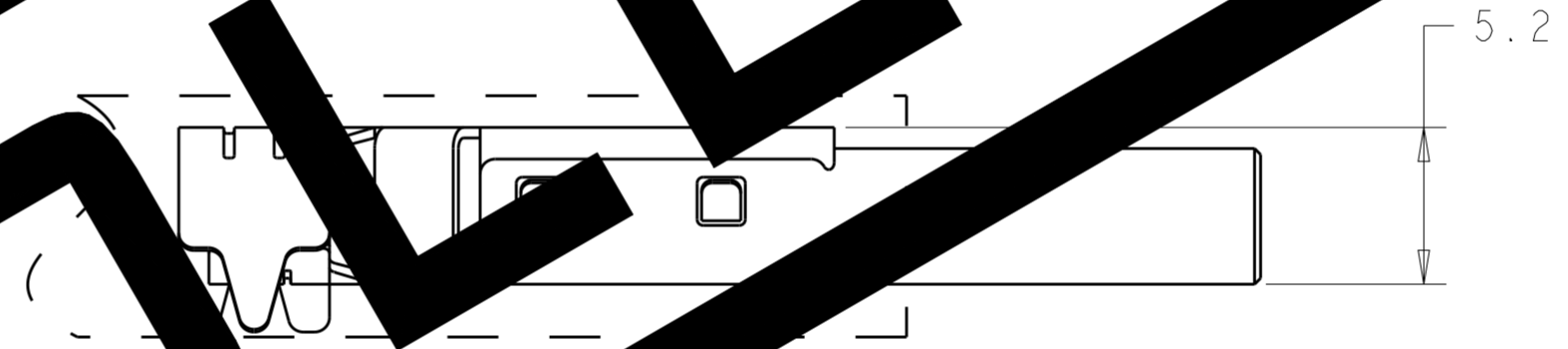
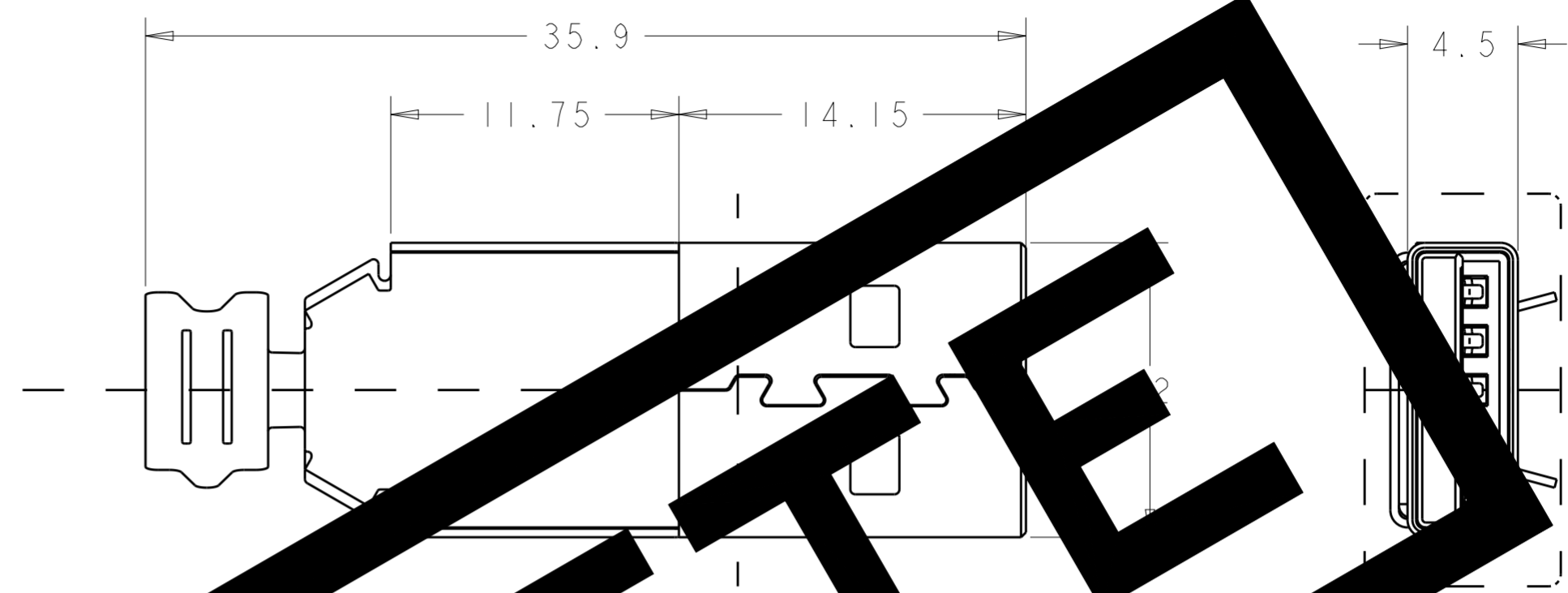
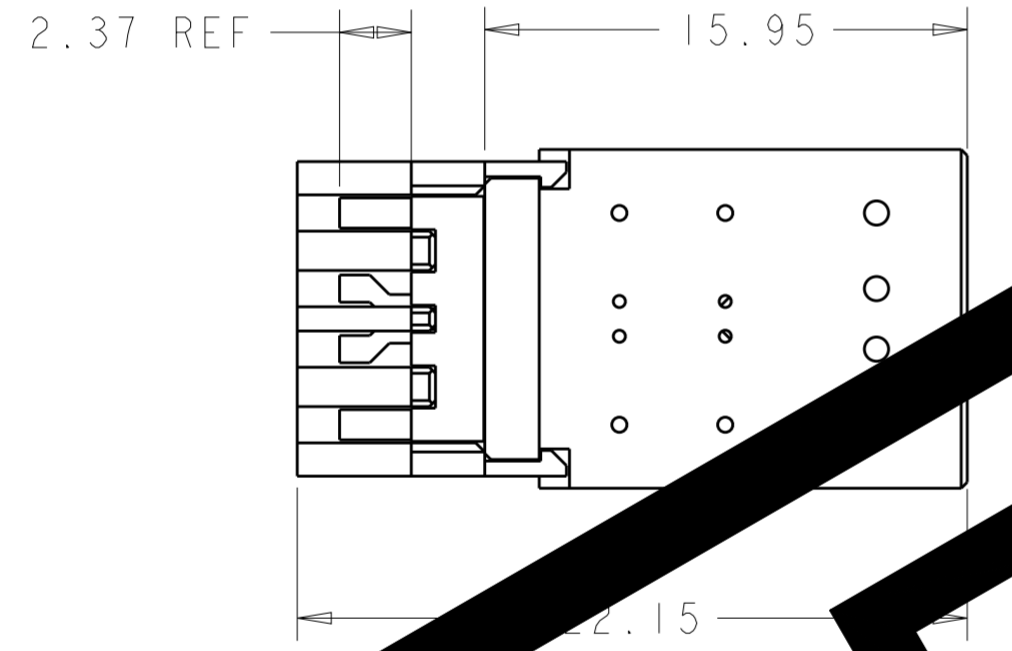
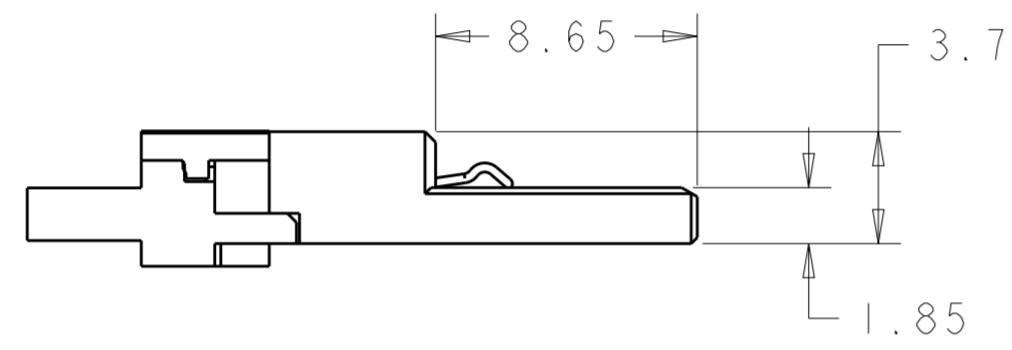
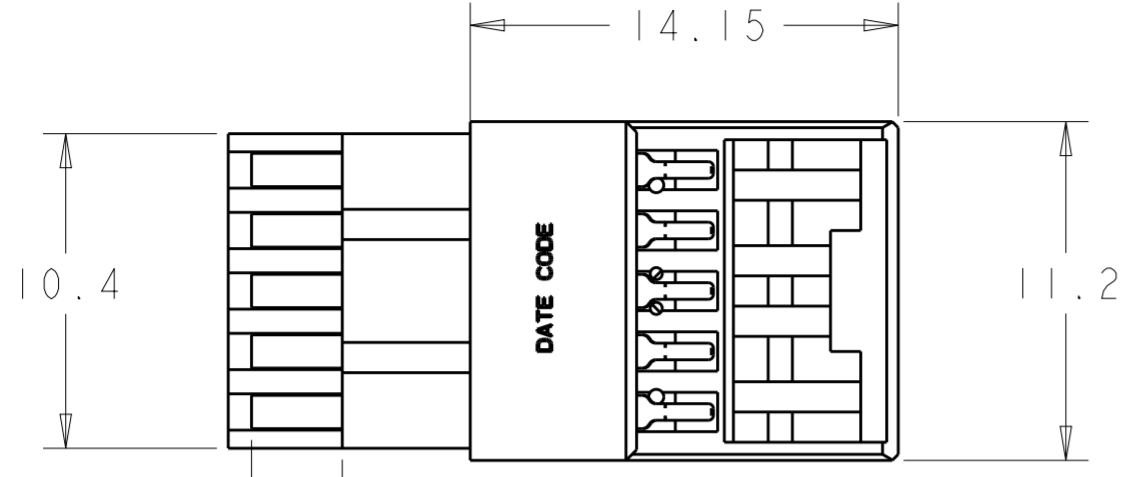


THIS DRAWING IS UNPUBLISHED. RELEASED FOR PUBLICATION 20
 © COPYRIGHT 20 BY TYCO ELECTRONICS CORPORATION. ALL RIGHTS RESERVED.

LOC	DIST	REVISIONS					
ES	00	P	LTR	DESCRIPTION	DATE	DWN	APVD
		A		INITIAL RELEASED PER ECR-11-002073	9FEB2011	A.L	S.Y
		B		OBSOLETE PER ECR-18-009100	15JUN2018	T.Z	S.L



OBSOLETE

BEFORE SHELL ASSEMBLY

AFTER POLYMERIZER AND SHELL ASSEMBLY

CABLE ASSEMBLY SOLDER POINT

CONTACT

CABLE ASSEMBLY SOLDER REQUIREMENT TO AVOID SHORT ISSUE

- MATERIAL:
SHELL : CARBON STEEL
CONTACTS: COPPER ALLOY
HOUSING: THERMOPLASTIC, BLUE
- PLATING:
CONTACT: 0.76um MIN GOLD OR GOLD FLASHED OVER 0.76um MIN Pd-Ni ON MATING AREA, 2.54um MIN MATTE TIN ON SOLDER TAILS, 1.27um MIN NICKEL UNDER PLATING
SHELL: NICKEL PLATING OVER COPPER PLATING
- RECOMMENDED CABLE ASSEMBLY PROCESS:
WIRE SOLDERING----->ENVELOPING GLUE AROUND SOLDER POINT
----->OVERMOLDING INNER PLASTIC----->OVER MOLDING OUTER PLASTIC

P/N: 1932266-1

THIS DRAWING IS A CONTROLLED DOCUMENT FOR TYCO ELECTRONICS CORPORATION. IT IS SUBJECT TO CHANGE AND THE CONTROLLING ENGINEERING ORGANIZATION SHOULD BE CONTACTED FOR THE LATEST REVISION.		DWN: ALAN LIU 18AUG2009	Tyco Electronics Shanghai P.R.China 200233	
DIMENSIONS: mm		CHK: MARTIN LI 18AUG2009	NAME: -	
TOLERANCES UNLESS OTHERWISE SPECIFIED: 0 PLC ±0.25 1 PLC ±0.25 2 PLC ±0.25 3 PLC ± 4 PLC ± ANGLES ± FINISH ±		APVD: STEVEN YAO 18AUG2009	PRODUCT SPEC: -	
MATERIAL: -		APPLICATION SPEC: -	USB 3.0 TYPE A STD PLUG	
		WEIGHT: -	SIZE: A200779	RESTRICTED TO: B
		CUSTOMER DRAWING	DRAWING NO: C-1932266	
		SCALE: 2:1	SHEET: 1 OF 1	REV: B