
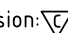
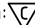
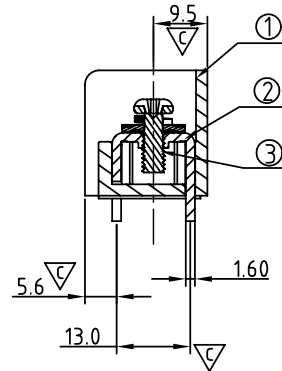
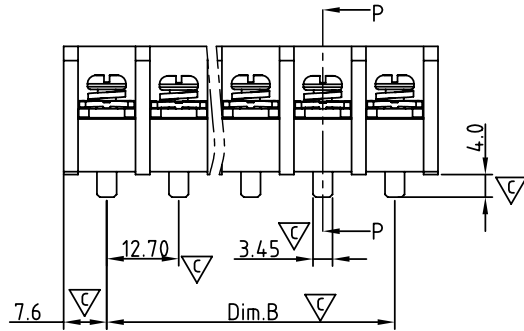
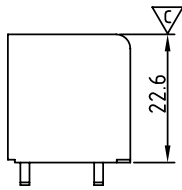
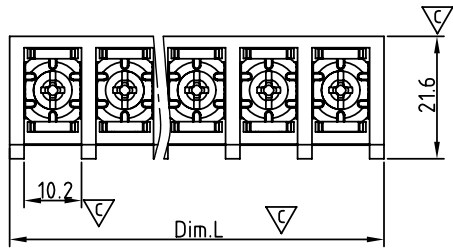


| SIGN | DATE | DESCRIPTION | APPROVER |
|------|---------|---|----------|
| △ | 2/24'09 | The Withstand Vol changed from 2000V/min to 2500V/min | Kind |
| △ | 2/23'11 | Add approval "cULus" | Tason |
| △ | 2/23'11 | Screw torque value changed from 18Kgf.cm to 16lb-In | Tason |
| △ | 5/07'12 | Add the description of "first pole" | Guoxue |
| △ | 5/07'12 | Add the "TOP VIEW" | Guoxue |

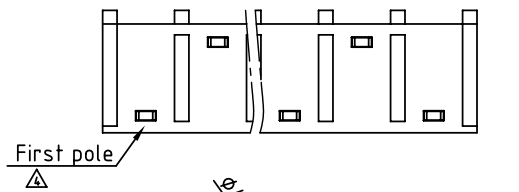
THIS IS CAD DRAWING, DO NOT REVISE MANUALLY!!!

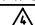
MATERIALS ELECTRICAL

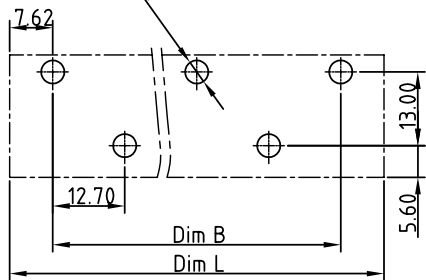
- RATED VOLTAGE & CURRENT:** 600 V, 45A
- △ **WITHSTAND VOLTAGE:** AC 2500 V/Min
- INSULATION RESISTANCE:** 1000 MΩ OR MORE AT DC 500 V
- OPERATING TEMPERATURE RANG:** -40 °C ~ +115 °C
- △ **SCREW TORQUE VALUE:** 16lb-In
- WIRE RANGE:** 18 - 8 AWG
- 1) **BODY:** THERMOPLASTICS, UL94-V0 BLACK
- 2) **TERMINAL:** BRASS, 1.6t, Tin PLATED
- 3) **TERMINAL SCREWS WITH WASHER:** STEEL, Ni PLATED, M4.0
- △ **APPROVAL:**  
- Critical dimension:** 



SECTION P-P



First pole 



P.C.B LAYOUT
TOP View

N= Number of poles
Dim.B= (N-1)x12.7
Dim.L= (N-1)x12.7+15.24

| POLE | 2P~8P | 9P~14P | 15P~20P |
|-------|-------|--------|---------|
| Dim.B | ±0.20 | ±0.30 | ±0.40 |
| Dim.L | ±0.30 | ±0.40 | ±0.60 |

YK 881 xx 0 x x 00G

NO. OF POLES ————

02: 2 POLES
03: 3 POLES
04: 4 POLES
:
20: 20 POLES

————— G RoHS compliant (lead<4%)
In copper Alloy

MARK
0: "@ " MARK
1: "ANY " MARK

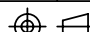
————— TERMINAL & SCREW PLATED

0: TERMINAL & SCREW: G/F
1: TERMINAL: G/F, SCREW: Ni
2: TERMINAL: Sn, SCREW: G/F
3: TERMINAL: Sn, SCREW: Ni

ANYTEK

CUSTOMER COPY

ALL RIGHTS RESERVED. REPRODUCTION OR ISSUE TO THIRD PARTIES IN ANY FORM WHATSOEVER IS NOT PERMITTED WITHOUT WRITTEN AUTHORITY FROM THE PROPRIETOR. PROPERTY OF ANYTEK TECHNOLOGY CO., LTD

| TITLE | | YK881 SERIES | | | DWG NO. | | 8YK0001-881 | |
|----------|---------|----------------------|----------------------|---|---------|-------------|-------------|------------|
| PART NO. | | YK881xx0xx00G | | | DWG NO. | | 8YK0001-881 | |
| APPROVED | CHECKED | DESIGNED | DRAWN | CUST NO. | | Tolerance | | |
| | | Guoxue 2012.05.07 | Guoxue 2012.05.07 |  | | UNIT: mm | | X. ±0.50 |
| | | | | | | SCALE: NONE | | X.X ±0.30 |
| | | | | SHEET: 01/01 | | REV.: D | | X.XX ±0.10 |
| | | | | | | | | X° ±1° |