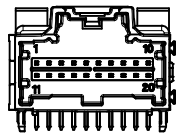
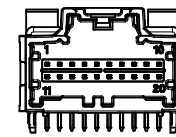


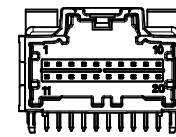
POLARIZATION OPTION A  
P/N 34691-6200



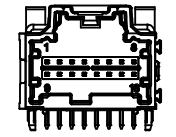
POLARIZATION OPTION B  
P/N 34691-6201



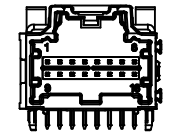
POLARIZATION OPTION C  
P/N 34691-6202



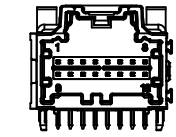
POLARIZATION OPTION D  
P/N 34691-6203



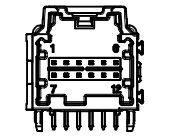
POLARIZATION OPTION A  
P/N 34691-6160



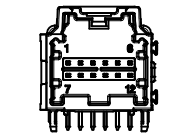
POLARIZATION OPTION B  
P/N 34691-6161



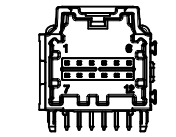
POLARIZATION OPTION C  
P/N 34691-6162



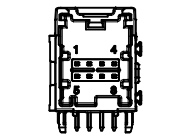
POLARIZATION OPTION A  
P/N 34691-6120



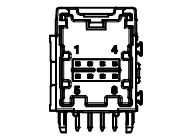
POLARIZATION OPTION B  
P/N 34691-6121



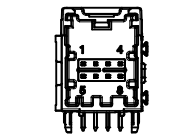
POLARIZATION OPTION C  
P/N 34691-6122



POLARIZATION OPTION A  
P/N 34691-6080



POLARIZATION OPTION B  
P/N 34691-6081



POLARIZATION OPTION C  
P/N 34691-6082

NOTES: VALID UNLESS OTHERWISE SPECIFIED

1. GENERAL:

a. CONNECTOR HEADER MUST BE VALIDATED TO THE FOLLOWING FUNCTIONAL REQUIREMENTS:

- POLARIZATION FEATURE EFFECTIVENESS - SEE PRODUCT SPECIFICATION
- PIN RETENTION - USCAR-2 REV 4
- SOLDERABILITY - SMES-152

b. APPLICATION REQUIREMENTS (REFERENCE ONLY) FOR:

- SEE APPLICATION SPECIFICATION - AS-34729-020/AS-31408-100
- SEE PRODUCT SPECIFICATION - PS-34729-020/PS-34729-020

c. PACKAGING SPECIFICATION: SEE CHART

2. DESIGN: MATERIALS:

a. SHROUD (PLASTIC HOUSING):  
RESIN - SPS 30%GF - 20% REGRIND MAX. BY WEIGHT

b. 0.64MM PINS:  
BASE MATERIAL: C26000  
PLATING TYPE: AS NOTED

c. PIN ALIGNMENT PLATE: RESIN - SPS 30%GF - 20% REGRIND MAX. BY WEIGHT

3. PLATING REQUIREMENTS:

- a. UNDERPLATING - OVERALL NICKEL
- b. OVERPLATING - OVERALL TIN

4. INTERFACE: USCAR

- 064-U-008-2-202
- 064-U-012-2-203
- 064-U-016-2-203
- 064-U-020-2-202

SOME CHAMFERS HAVE BEEN MODIFIED TO IMPROVE POLARIZATION

EFFECTIVENESS. SEE AS-34729-002/AS-31408-100.

REMOVE PANEL VIEW DEC NO: UAU2007-1044 DRAWN: FISCHER01 2017/05/11 CHKD: APPR: RBAUMAN 2017/05/15	QUALITY SYMBOLS	GENERAL TOLERANCES (UNLESS SPECIFIED)	DIMENSION STYLE	SCALE	DESIGN UNITS	THIRD ANGLE PROJECTION															
	$\nabla=0$ $\nabla=0$	<table border="1"> <tr> <th></th> <th>mm</th> <th>INCH</th> </tr> <tr> <td>4 PLACES</td> <td>±.005</td> <td>±.0002</td> </tr> <tr> <td>3 PLACES</td> <td>±.008</td> <td>±.0003</td> </tr> <tr> <td>2 PLACES</td> <td>±.013</td> <td>±.0005</td> </tr> <tr> <td>1 PLACE</td> <td>±.025</td> <td>±.0010</td> </tr> </table>		mm	INCH	4 PLACES	±.005	±.0002	3 PLACES	±.008	±.0003	2 PLACES	±.013	±.0005	1 PLACE	±.025	±.0010	MM ONLY	2:1	METRIC	
		mm	INCH																		
	4 PLACES	±.005	±.0002																		
3 PLACES	±.008	±.0003																			
2 PLACES	±.013	±.0005																			
1 PLACE	±.025	±.0010																			
DRAFT WHERE APPLICABLE MUST REMAIN WITHIN DIMENSIONS	DRAWN BY: JFISCHER01 DATE: 2013/07/26 CHECKED BY: _____ DATE: _____ APPROVED BY: RBAUMAN DATE: 2013/08/05	TITLE: STAC64 PAP R/A LONG PIN MATERIAL NO. SD-34691-601 DOCUMENT NO.	MOLEX INCORPORATED SEE CHART	SHEET NO. 1 OF 3																	
THIS DRAWING CONTAINS INFORMATION THAT IS PROPRIETARY TO MOLEX INCORPORATED AND SHOULD NOT BE USED WITHOUT WRITTEN PERMISSION																					

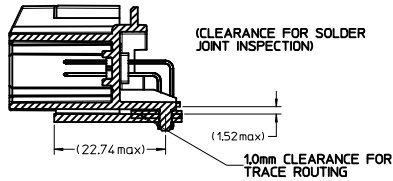
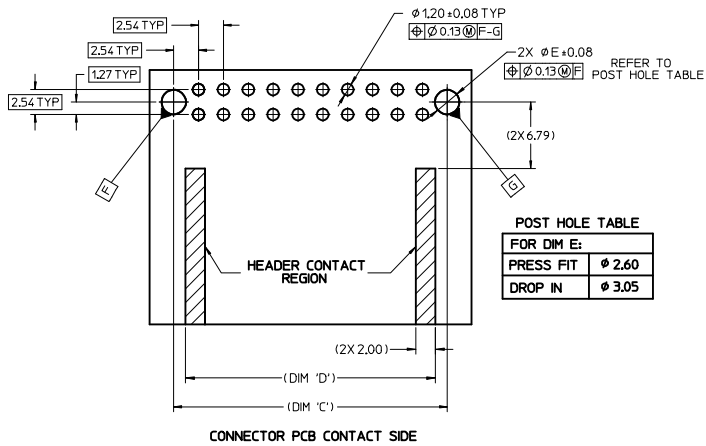
MATERIAL NUMBER		CKT SIZE	DESCRIPTION	POL	COLOR	MATERIAL NUMBER		CKT SIZE	DESCRIPTION	POL	COLOR
TRAY PACKAGING PK-31300-892	TUBE PACKAGING PK-31301-063					TRAY PACKAGING PK-31300-892	TUBE PACKAGING PK-31301-063				
34691-6200	34691-9246	20	STAC64 RIGHT ANGLE HEADER ASSEMBLY	A	BLACK	34691-6120	34691-9623	12	STAC64 RIGHT ANGLE HEADER ASSEMBLY	A	BLACK
34691-6201	34691-9256	20	STAC64 RIGHT ANGLE HEADER ASSEMBLY	B	GREY	34691-6121	34691-9624	12	STAC64 RIGHT ANGLE HEADER ASSEMBLY	B	GREY
34691-6202	34691-9266	20	STAC64 RIGHT ANGLE HEADER ASSEMBLY	C	BROWN	34691-6122	34691-9625	12	STAC64 RIGHT ANGLE HEADER ASSEMBLY	C	BROWN
34691-6203	34691-9276	20	STAC64 RIGHT ANGLE HEADER ASSEMBLY	D	GREEN	34691-6080	34691-9680	8	STAC64 RIGHT ANGLE HEADER ASSEMBLY	A	BLACK
34691-6160	34691-9660	16	STAC64 RIGHT ANGLE HEADER ASSEMBLY	A	BLACK	34691-6081	34691-9681	8	STAC64 RIGHT ANGLE HEADER ASSEMBLY	B	GREY
34691-6161	34691-9661	16	STAC64 RIGHT ANGLE HEADER ASSEMBLY	B	GREY	34691-6082	34691-9682	8	STAC64 RIGHT ANGLE HEADER ASSEMBLY	C	BROWN
34691-6162	34691-9662	16	STAC64 RIGHT ANGLE HEADER ASSEMBLY	C	BROWN						

<b>REMOVE PANEL VIEW</b> EEC NO. UAU2017-1044 DRAWN: JFISCHERO1 2017/05/11 CHKD: [Signature] APPR: RBAUMAN 2017/05/15 REV: [Signature]	QUALITY SYMBOLS =0 =0	GENERAL TOLERANCES (UNLESS SPECIFIED) mm INCH 4 PLACES ± --- ± --- 3 PLACES ± --- ± --- 2 PLACES ± 0.13 ± --- 1 PLACE ± 0.25 ± --- ANGULAR ± 1°	DIMENSION STYLE MM ONLY	SCALE 4:1	DESIGN UNITS METRIC	THIRD ANGLE PROJECTION	
	DRAWN BY JFISCHERO1	DATE 2013/07/26	TITLE STAC64 PAP R/A LONG PIN				
	CHECKED BY [Signature]	DATE [Date]	APPROVED BY RBAUMAN	DATE 2013/08/05	MOLEX INCORPORATED		
	MATERIAL NO. SEE CHART		DOCUMENT NO. SD-34691-601		SHEET NO. 2 OF 3		

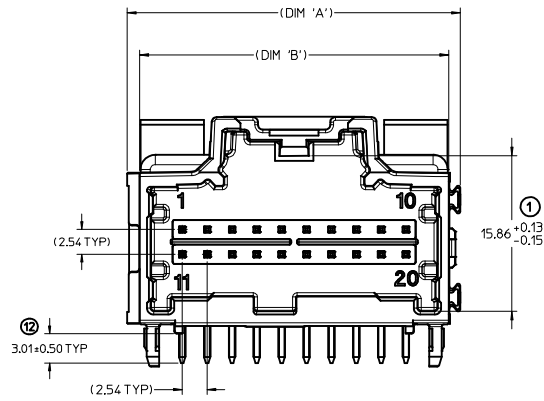
DRAFT WHERE APPLICABLE MUST REMAIN WITHIN DIMENSIONS  
 THIS DRAWING CONTAINS INFORMATION THAT IS PROPRIETARY TO MOLEX INCORPORATED AND SHOULD NOT BE USED WITHOUT WRITTEN PERMISSION

CKT SIZE	DIM 'A'	DIM 'B'	DIM 'C'	DIM 'D'
20	34.04	31.57	27.94	25.54
16	28.96	26.49	22.86	20.46
12	23.88	21.41	17.78	15.38
8	18.80	16.53	12.70	10.30

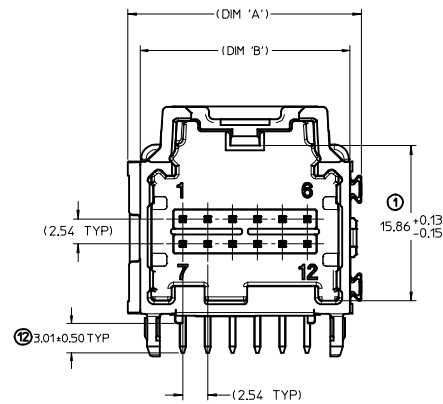
### RECOMMENDED PCB LAYOUT



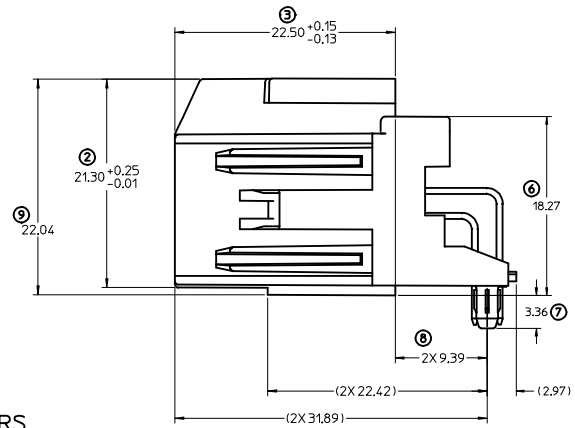
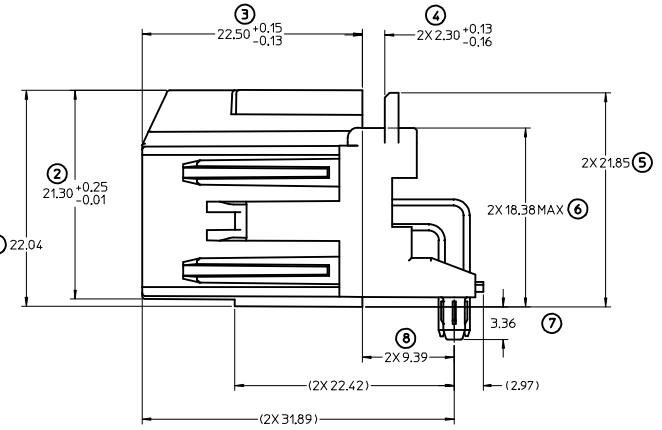
\*RECOMMENDED FOR REFLOW SOLDER\*  
 FLUSH MOUNTING:  
 SCALE 2:1



LAYOUT FOR 16 & 20 CKT. HEADERS  
(20 CKT. OPTION 'A' SHOWN)



LAYOUT FOR 8 & 12 CKT. HEADERS  
(12 CKT. OPTION 'A' SHOWN)

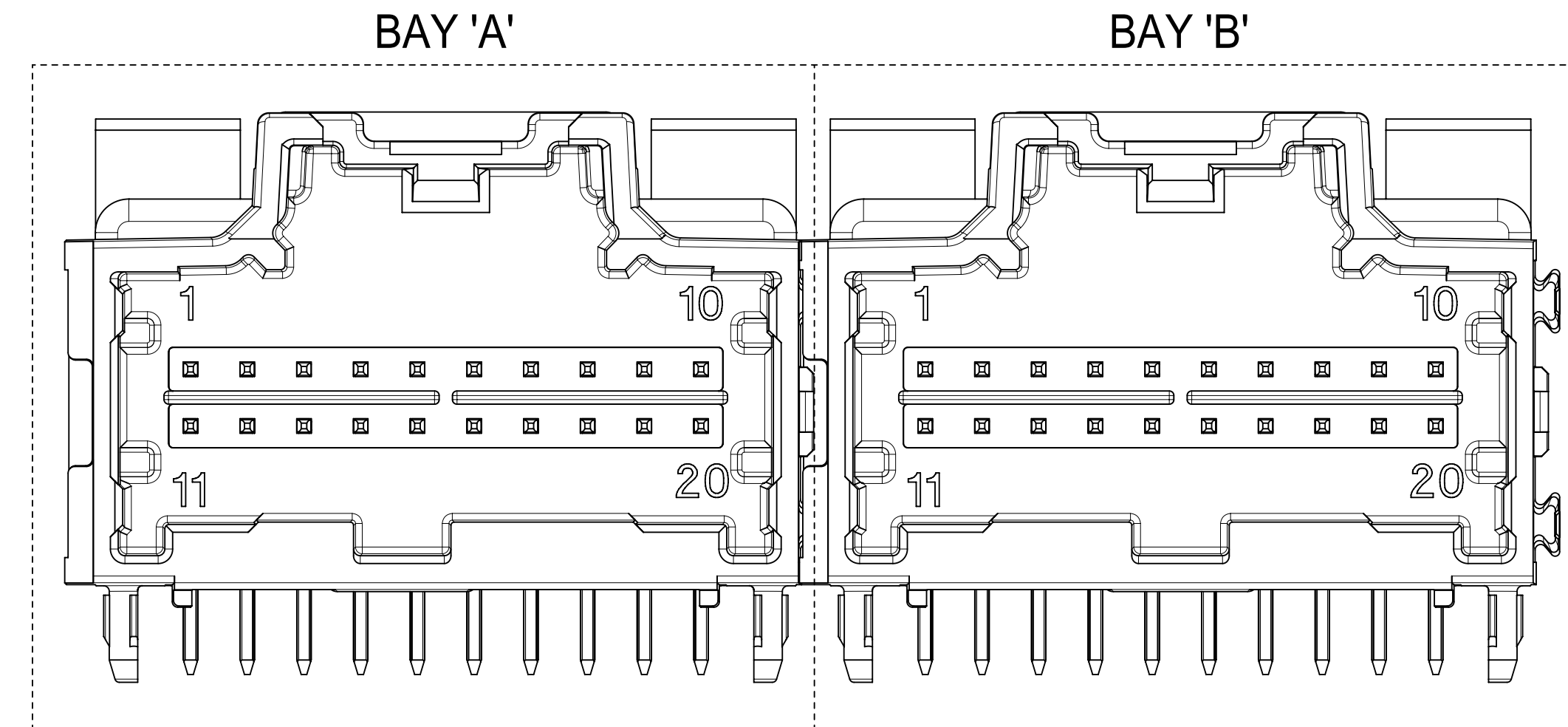


ENTER DESCRIPTION ELEC NO. UAU2017-1044 DRAWN BY JFISCHER01 CHKD: JFISCHER01 APPR: RBAUMAN REV	DESCRIPTION 2017/05/11	QUALITY SYMBOLS		GENERAL TOLERANCES (UNLESS SPECIFIED)		DIMENSION STYLE		SCALE	DESIGN UNITS	THIRD ANGLE PROJECTION
		$\nabla=0$	$\nabla=0$	mm	INCH	MM ONLY	4:1	METRIC		
		$\nabla=0$	$\nabla=0$	4 PLACES	± ---	± ---	DRAWN BY	DATE	TITLE	
		$\nabla=0$	$\nabla=0$	3 PLACES	± ---	± ---	JFISCHER01	2013/07/26	STAC64 PAP R/A LONG PIN	
		$\nabla=0$	$\nabla=0$	2 PLACES	± 0.13	± ---	CHECKED BY	DATE		
		$\nabla=0$	$\nabla=0$	1 PLACE	± 0.25	± ---	APPROVED BY	DATE		
		$\nabla=0$	$\nabla=0$	0 PLACE	± ---	± ---	RBAUMAN	2013/08/05		
DRAFT WHERE APPLICABLE MUST REMAIN WITHIN DIMENSIONS						ANGULAR ± 1°		MATERIAL NO.		SHEET NO.
SEE CHART						SD-34691-601		3 OF 3		
THIS DRAWING CONTAINS INFORMATION THAT IS PROPRIETARY TO MOLEX INCORPORATED AND SHOULD NOT BE USED WITHOUT WRITTEN PERMISSION										

DIMENSIONAL CHART FOR MULTIBAY CONFIGURATION:

2 BAY PART NUMBER (TUBE PKG)	2 BAY PART NUMBER (TRAY PKG)	BAY A			BAY B			DIM 'A'	DIM 'B'	DIM 'C'	DIM 'D'
		CKT	TYPE	POL	CKT	TYPE	POL				
34997-7000	34997-2000	20	0.64mm	A	20	0.64mm	B	66.94	64.47	27.94	27.94
34997-7001	34997-2001	20	0.64mm	C	8	0.64mm	A	51.70	49.23	27.94	12.70
34997-7002	34997-2002	20	0.64mm	C	12	0.64mm	A	56.78	54.31	27.94	17.78
TBD	34997-2003	8	0.64mm	A	10	HYBRID	A	51.70	49.23	12.70	27.94
TBD	34997-2004	12	0.64mm	A	8	0.64mm	A	41.54	39.07	17.78	12.70
TBD	34997-2005	20	0.64mm	C	20	0.64mm	B	66.94	64.47	27.94	27.94
TBD	34997-2006	10	HYBRID	A	20	0.64mm	A	66.94	64.47	27.94	27.94
TBD	34997-2007	12	0.64mm	A	8	0.64mm	B	41.54	39.07	17.78	12.70
TBD	34997-2008	20	0.64mm	A	16	0.64mm	C	61.86	59.39	27.94	22.86
TBD	34997-2009	20	0.64mm	A	16	0.64mm	A	56.78	54.31	27.94	17.78
34997-7010	34997-2010	20	0.64mm	A	8	0.64mm	A	51.70	49.23	27.94	12.70
34997-7011	34997-2011	20	0.64mm	B	8	0.64mm	A	51.70	49.23	27.94	12.70
TBD	34997-2012	12	0.64mm	A	12	0.64mm	C	46.62	44.15	17.78	17.78
34997-7013	34997-2013	20	0.64mm	B	20	0.64mm	C	66.94	64.47	27.94	27.94
34997-7014	34997-2014	10	HYBRID	B	10	HYBRID	A	66.94	64.47	27.94	27.94
TBD	34997-2015	12	0.64mm	B	16	0.64mm	A	51.70	49.23	17.78	22.86
34997-7016	34997-2016	10	HYBRID	B	20	0.64mm	A	66.94	64.47	27.94	27.94
34997-7017	34997-2017	16	0.64mm	B	16	0.64mm	C	56.78	54.31	22.86	22.86
TBD	34997-2018	14	HYBRID	A	10	HYBRID	A	66.94	64.47	27.94	27.94
TBD	34997-2019	12	0.64mm	A	20	0.64mm	B	56.78	54.31	17.78	27.94
TBD	34997-2020	10	HYBRID	B	12	0.64mm	A	56.78	54.31	27.94	17.78
TBD	34997-2021	12	0.64mm	A	8	0.64mm	B	41.54	39.07	17.78	12.70
TBD	34997-2022	10	HYBRID	A	12	0.64mm	A	56.78	54.31	27.94	17.78

## 2 BAY STAC64 RIGHT ANGLE HEADER ASSEMBLY (P/N: 34997-2000 SHOWN)



NOTES: VALID UNLESS OTHERWISE SPECIFIED

1. GENERAL:

a. CONNECTOR HEADER MUST BE VALIDATED TO THE FOLLOWING FUNCTIONAL REQUIREMENTS:

PRODUCT SPECIFICATION:  
8-20 CKT 0.64 PRODUCT SPEC: PS-34729-020/PS-31408-100  
10/14CKT HYBRID PRODUCT SPEC: PS-34696-100

b. APPLICATION REQUIREMENTS (REFERENCE ONLY):

APPLICATION SPECIFICATION: AS-34729-020/AS-31408-100

c. PACKAGING SPECIFICATION PER MOLEX DRAWING PK-31300-892 (TRAY)  
d. PACKAGING SPECIFICATION PER MOLEX DRAWING PK-31301-063 (TUBE)

2. DESIGN: MATERIALS:

a. SHROUD (PLASTIC HOUSING):  
RESIN - SPS 30%GF

HOUSING COLOR:  
BLACK - POLARIZATION 'A'  
GREY - POLARIZATION 'B'  
BROWN - POLARIZATION 'C'  
GREEN - POLARIZATION 'D'

b. 0.64mm PINS:  
BASE MATERIAL: C26000  
PLATING TYPE: AS NOTED

c. 1.5/2.8mm BLADES:  
BASE MATERIAL: C19400  
PLATING TYPE: AS NOTED

3. PLATING REQUIREMENTS:

a. UNDERPLATING - OVERALL NICKEL

b. OVERPLATING - OVERALL TIN

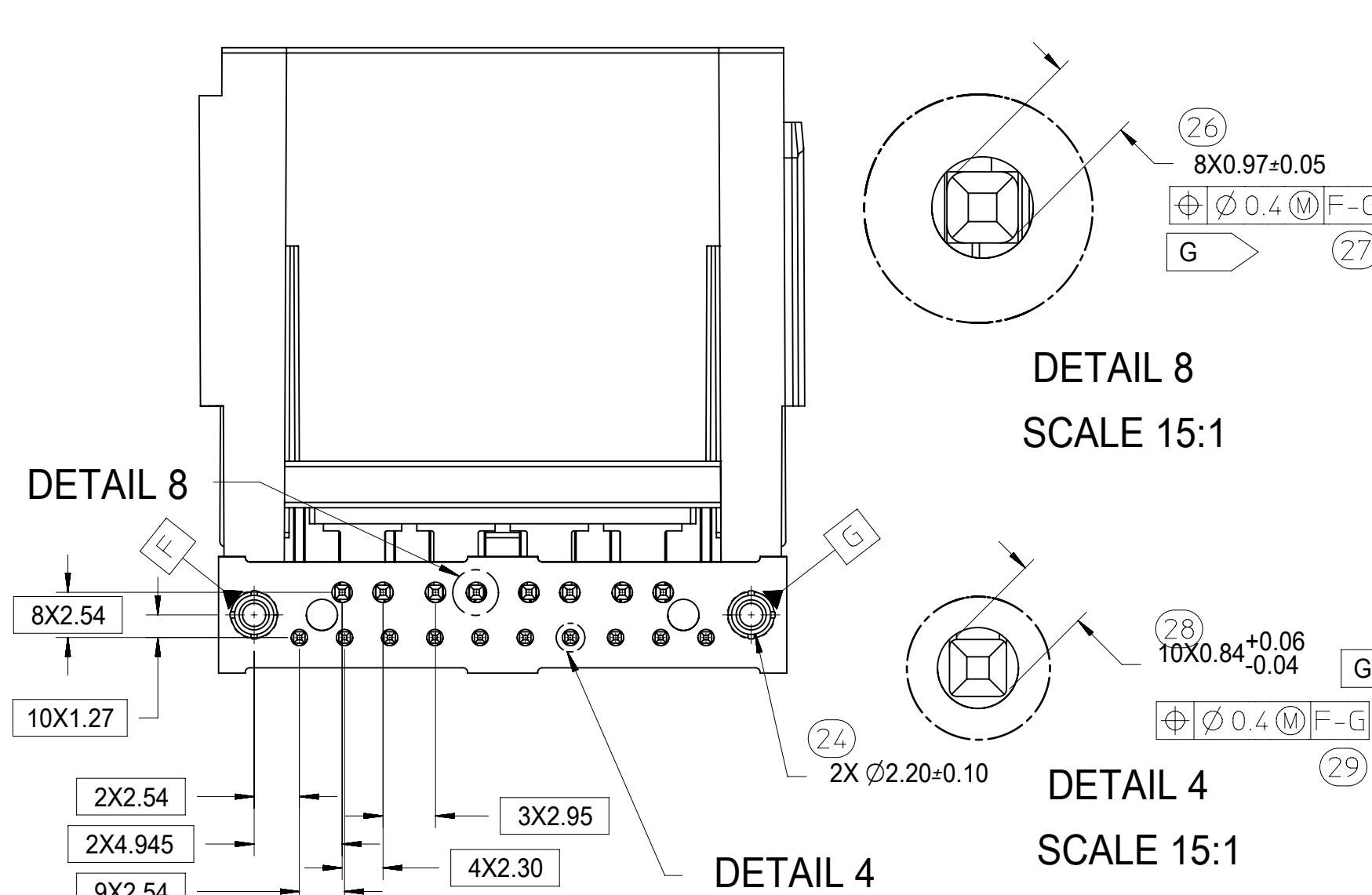
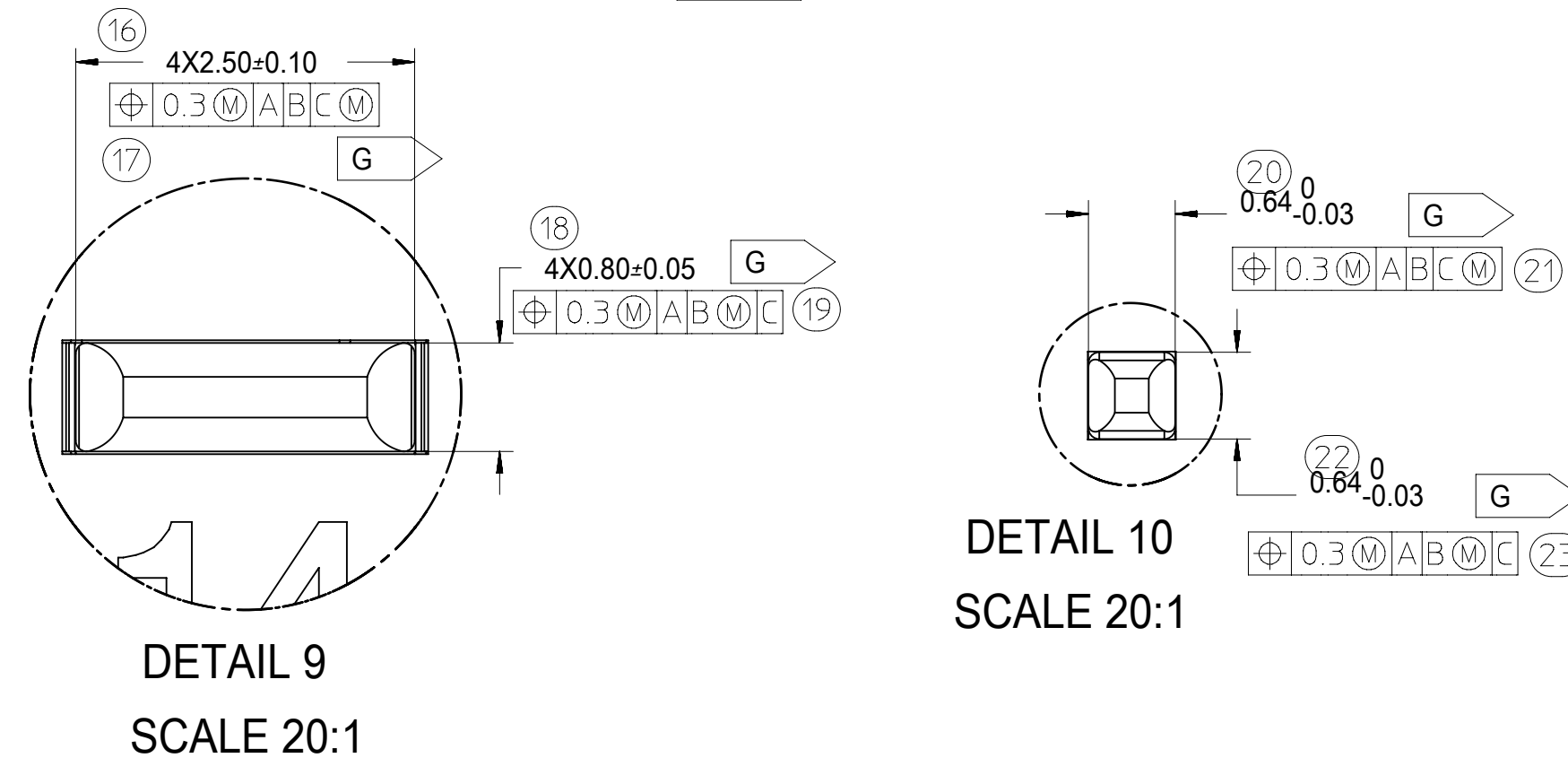
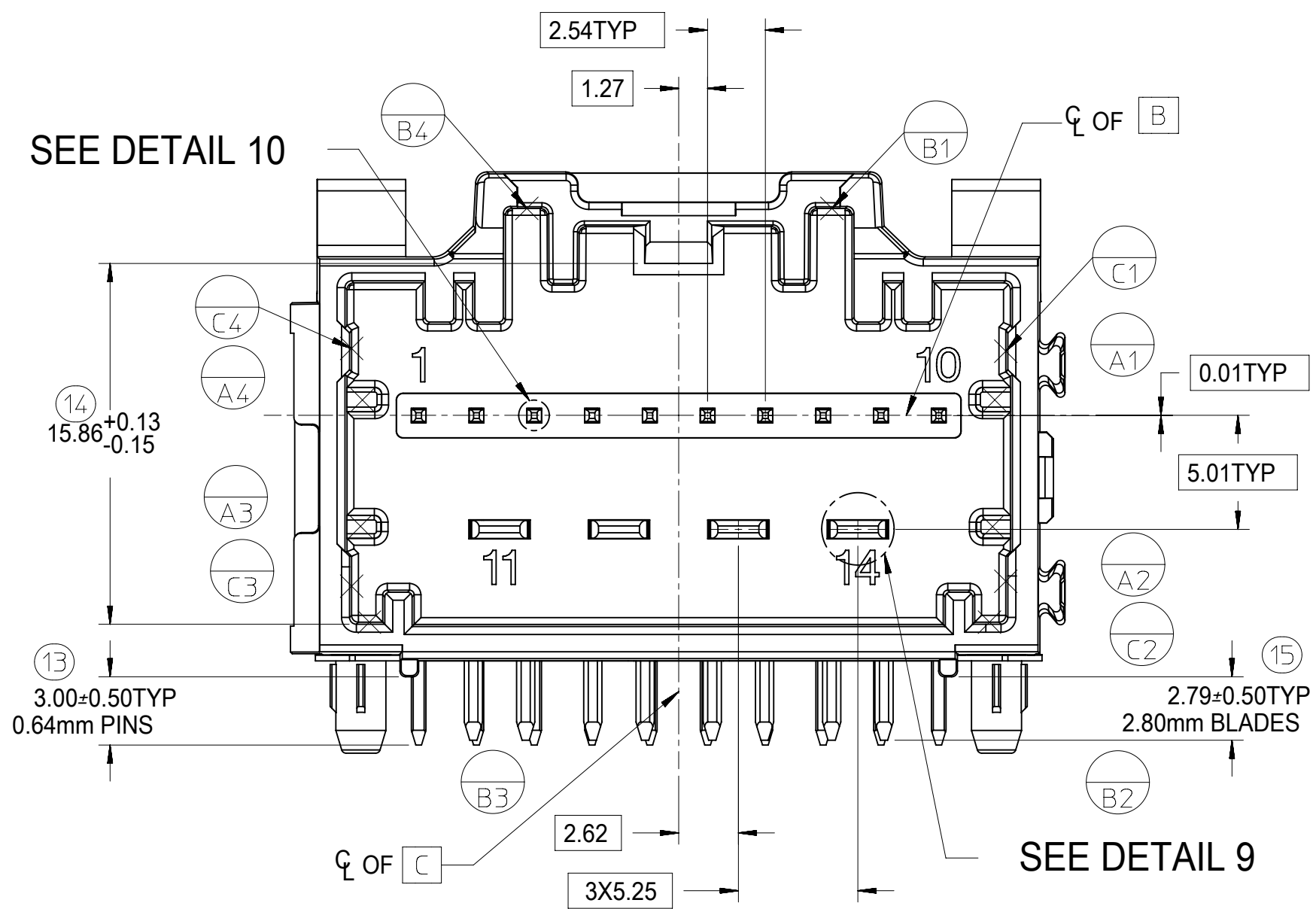
4. FOR ADDITIONAL INFORMATION AND DIMENSIONS OF INDIVIDUAL BAYS  
REFER TO THE FOLLOWING SINGLE BAY DRAWINGS:

8-20 CKT 0.64: SD-34691-601  
10CKT HYBRID: SD-34696-100  
14CKT HYBRID: SD-34773-010

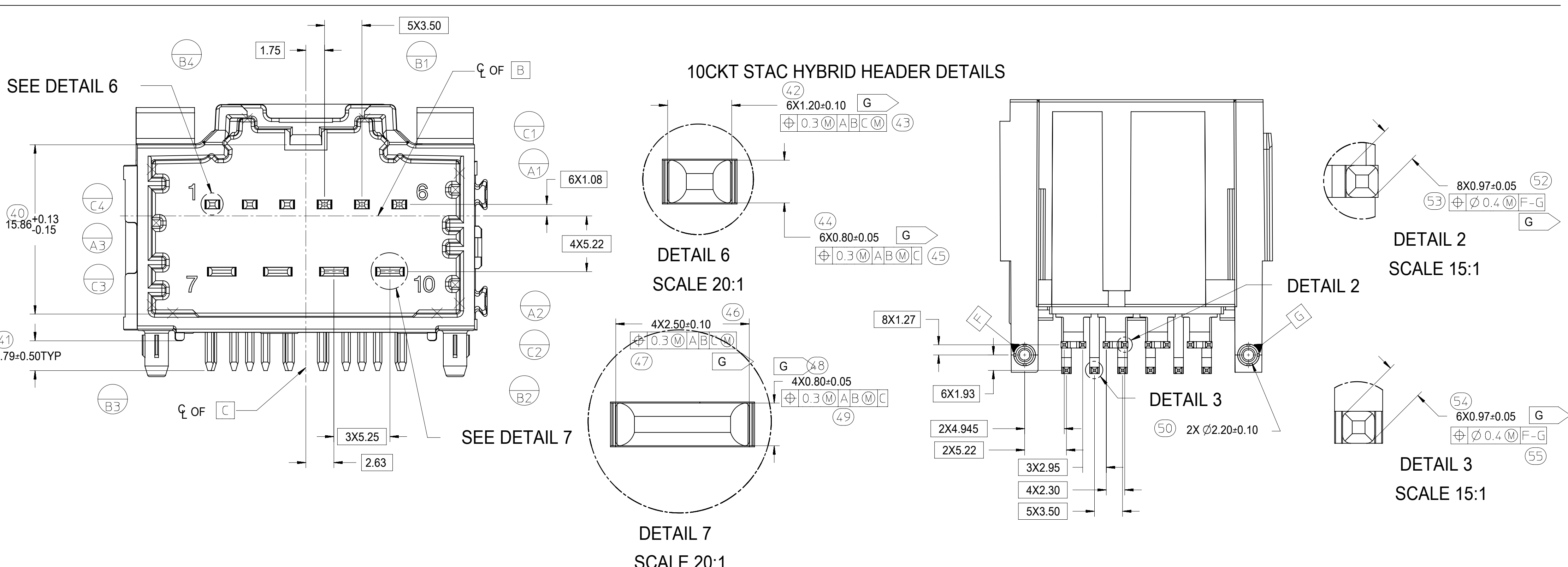
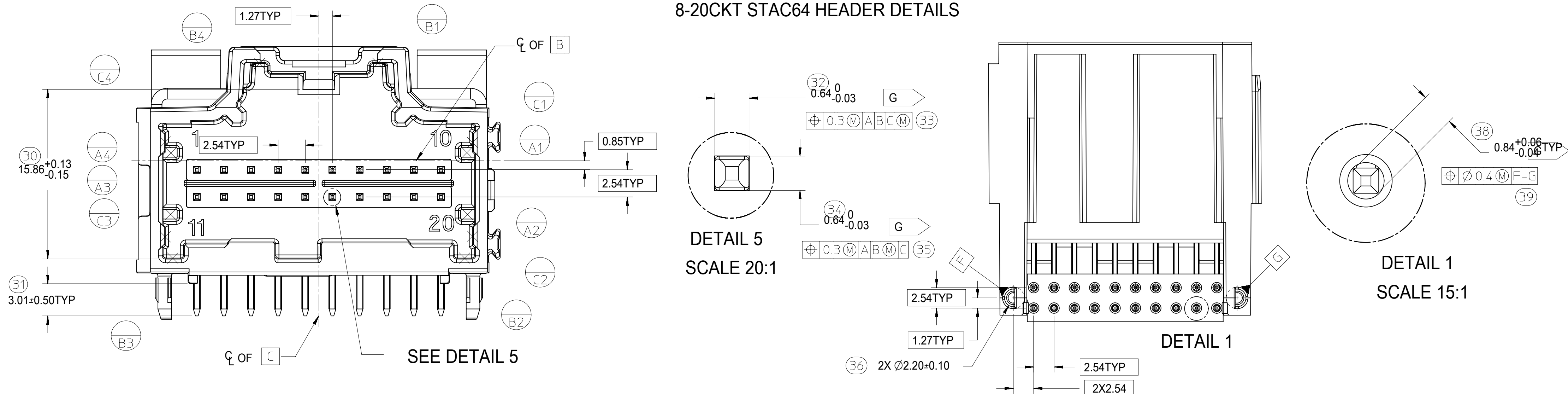
SYMBOLS	THIS DRAWING CONTAINS INFORMATION THAT IS PROPRIETARY TO MOLEX ELECTRONIC TECHNOLOGIES, LLC AND SHOULD NOT BE USED WITHOUT WRITTEN PERMISSION		CURRENT REV DESC: ADDED NEW P/N 34997-2022 (10HA AND 12A)			
	DIMENSION UNITS	SCALE				
▽ = 0	mm	4:1	EC NO: 618886		2-BAY STAC64 RIGHT ANGLE PAP LONG PIN HEADER ASSEMBLY SALES DRAWING	
▽ = 0	GENERAL TOLERANCES (UNLESS SPECIFIED)		DRWN: SHANDITHAVAL 2019/06/11		PRODUCT CUSTOMER DRAWING	
▽ = 0	ANGULAR TOL ± 1.0°		CHK'D: RBAUMAN 2019/06/11		DOCUMENT NUMBER	
▽ = 0	4 PLACES ±		APPR: RBAUMAN 2019/06/11		DOC TYPE	
▽ = 0	3 PLACES ±		INITIAL REVISION:		DOC PART	
▽ = 0	2 PLACES ± 0.13		DRWN: JFISCHER01 2013/05/28		REVISION	
▽ = 0	1 PLACE ± 0.25		APPR: RBAUMAN 2013/05/30		SD-34997-200	
▽ = 0	0 PLACES ±		DRAFT WHERE APPLICABLE MUST REMAIN WITHIN DIMENSIONS		PSD 001 J5	
▽ = 0	THIRD ANGLE PROJECTION		DRAWING		MATERIAL NUMBER	
▽ = 0	D-DRAWING		SERIES		CUSTOMER	
▽ = 0	D-DRAWING		34997		SEE TABLE	
▽ = 0	D-DRAWING		GENERAL MARKET		SHEET NUMBER	
▽ = 0	D-DRAWING		1 OF 3			



14CKT STAC HYBRID HEADER DETAILS



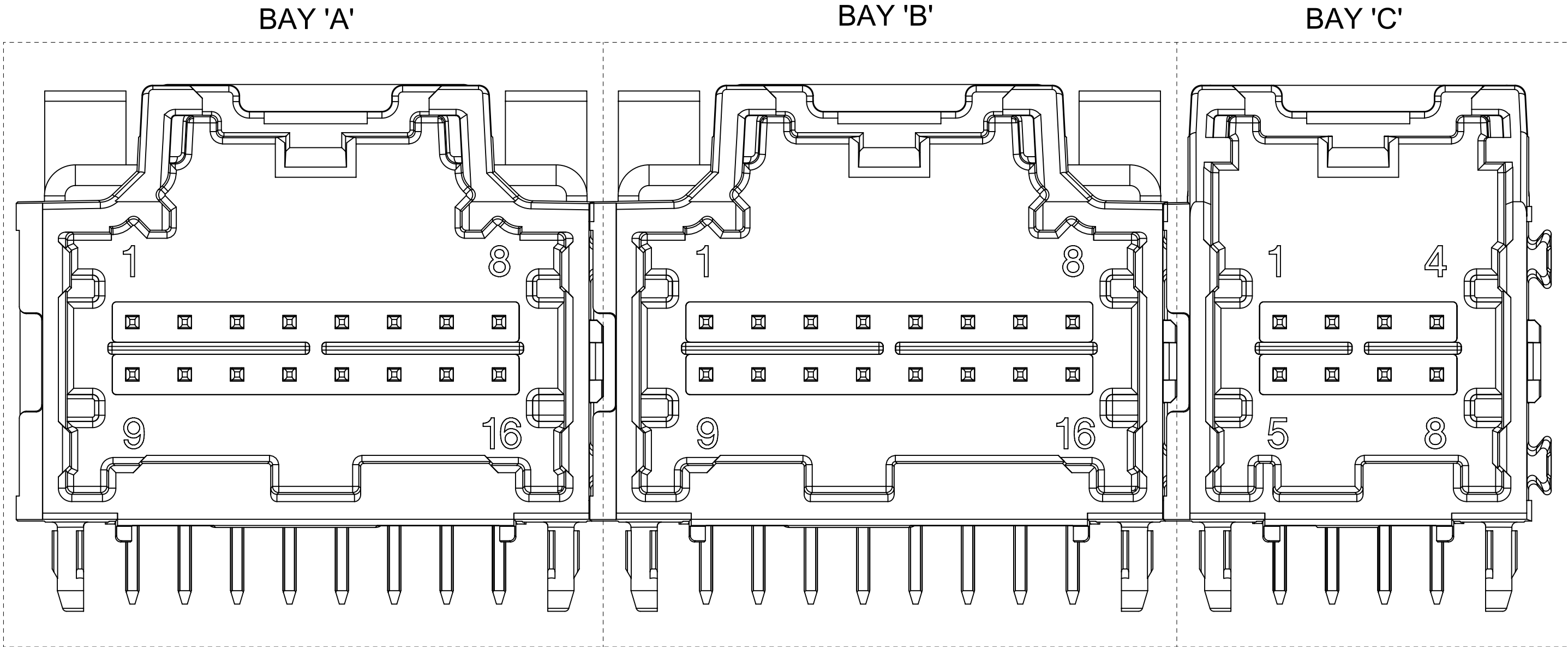
8-20CKT STAC64 HEADER DETAILS



SYMBOLS	THIS DRAWING CONTAINS INFORMATION THAT IS PROPRIETARY TO MOLEX ELECTRONIC TECHNOLOGIES, LLC AND SHOULD NOT BE USED WITHOUT WRITTEN PERMISSION		
	DIMENSION UNITS	SCALE	CURRENT REV DESC: ADDED NEW P/N 34997-2022 (10HA AND 12A)
▽ = 0	mm	4:1	
▽ = 0	GENERAL TOLERANCES (UNLESS SPECIFIED)		
▽ = 0	ANGULAR TOL ± 1.0°		
▽ = 0	4 PLACES ±		
▽ = 0	3 PLACES ±		
▽ = 0	2 PLACES ± 0.13		
▽ = 0	1 PLACE ± 0.25		
▽ = 0	0 PLACES ±		
▽ = 0	DRAFT WHERE APPLICABLE MUST REMAIN WITHIN DIMENSIONS		
	THIRD ANGLE PROJECTION	DRAWING	SERIES
		D-SIZE	34997
		MATERIAL NUMBER	CUSTOMER
		SEE TABLE	GENERAL MARKET
		DOCUMENT NUMBER	DOC TYPE DOC PART REVISION
		SD-34997-200	PSD 001 J5
		PRODUCT CUSTOMER DRAWING	
		EC NO: 618886	
		DRWN: SHANDITHAVAL 2019/06/11	
		CHK'D: RBAUMAN 2019/06/11	
		APPR: RBAUMAN 2019/06/11	
		INITIAL REVISION:	
		DRWN: JFISCHER01 2013/05/28	
		APPR: RBAUMAN 2013/05/30	
		DOCUMENT NUMBER	DOC TYPE DOC PART REVISION
		SD-34997-200	PSD 001 J5
		MATERIAL NUMBER	CUSTOMER
		SEE TABLE	GENERAL MARKET
		DRAWING	SERIES
		D-SIZE	34997
		DRAFT WHERE APPLICABLE MUST REMAIN WITHIN DIMENSIONS	
		THIRD ANGLE PROJECTION	
		DRAWING	SERIES
		D-SIZE	34997
		MATERIAL NUMBER	CUSTOMER
		SEE TABLE	GENERAL MARKET
		DOCUMENT NUMBER	DOC TYPE DOC PART REVISION
		SD-34997-200	PSD 001 J5
		MATERIAL NUMBER	CUSTOMER
		SEE TABLE	GENERAL MARKET

TABLE OF CONTENTS	
1	NOTES, INSPECTION BALLOON NUMBER LOG, REV. TABLE, 3 BAY ASSEMBLY VIEW
2	DIMENSIONAL CHART FOR MULTIBAY CONFIGURATION
3	3 BAY ASSEMBLY VIEW, RECOMMENDED PCB LAYOUT, FLUSH MOUNTING VIEW, POST HOLE TABLE, DIMENSION DETAILS
4	8-20CKT 0.64MM HEADER DETAILS, 14CKT HYBRID HEADER DETAILS, 10CKT HYBRID HEADER DETAILS
5	RECOMMENDED SINGLE PCB LAYOUT FOR 10CKT HYBRID, 14CKT HYBRID, AND 8-20CKT 0.64MM

## 3-BAY STAC64 RIGHT ANGLE HEADER ASSEMBLY (P/N: 34997-3000 SHOWN)



- L10** NOTES: VALID UNLESS OTHERWISE SPECIFIED
1. GENERAL:
    - a. CONNECTOR HEADER MUST BE VALIDATED TO THE FOLLOWING FUNCTIONAL REQUIREMENT:  
 PRODUCT SPECIFICATION:  
 8-20 CKT 0.64 PRODUCT SPEC: PS-34729-020/PS-31408-100  
 10 CKT HYBRID PRODUCT SPEC: PS-31372-100  
 14 CKT HYBRID PRODUCT SPEC: PS-34969-100
    - b. APPLICATION REQUIREMENTS (REFERENCE ONLY):  
 APPLICATION SPECIFICATION: AS-34729-020/AS-31408-100
    - c. PACKAGING SPECIFICATION PER MOLEX DRAWING PK-31300-892 (TRAY)
    - d. PACKAGING SPECIFICATION PER MOLEX DRAWING PK-31301-063 (TUBE)
  2. DESIGN MATERIALS:
    - a. SHROUD (PLASTIC HOUSING):  
 RESIN - SPS  
 HOUSING COLOR:  
 BLACK - POLARIZATION 'A'  
 GREY - POLARIZATION 'B'  
 BROWN - POLARIZATION 'C'  
 GREEN - POLARIZATION 'D'
    - b. 0.64mm PINS:  
 BASE MATERIAL: COPPER ALLOY  
 PLATING TYPE: AS NOTED
    - c. 1.5/2.8mm BLADES:  
 BASE MATERIAL: COPPER ALLOY  
 PLATING TYPE: AS NOTED
  3. PLATING REQUIREMENTS:
    - a. UNDERPLATING - OVERALL NICKEL
    - b. OVERPLATING - OVERALL TIN
  4. FOR DESCRIPTION OF INDIVIDUAL BAYS, REFER TO THE FOLLOWING SINGLE BAY DRAWINGS:  
 8-20 CKT 0.64: SD-34691-601  
 10CKT HYBRID: SD-34696-100  
 14CKT HYBRID: SD-34773-010
  5. G DENOTES DIMENSIONS THAT MAY BE QUALIFIED WITH A GAUGE.

REV.	REV. DESCRIPTION	EC#	DATE
L10	1. UPDATED NOTES 2. ADDED NEW P/NS 34997-3017 AND 34997-3018 IN DIMENSIONAL CHART IN SHEET 2	662725	2021.05
L9	1. DIEMNTIONAL CHART WAS IN SHEET 1 2. 10/14 CKT HYBRID SPEC WAS PS-34696-100 IN NOTES 1a SHEET 1 3. ADDED P/N 34997-3015 10B+20A+20B IN SHEET 2 4. ADDED P/N 34997-3016 12A+20C+12B IN SHEET 2	645306	2020.09

SYMBOLS		THIS DRAWING CONTAINS INFORMATION THAT IS PROPRIETARY TO MOLEX ELECTRONIC TECHNOLOGIES, LLC AND SHOULD NOT BE USED WITHOUT WRITTEN PERMISSION	
DIMENSION UNITS	SCALE	CURRENT REV DESC:	
= 0	mm	5:1	
= 0	GENERAL TOLERANCES (UNLESS SPECIFIED)		
= 0	ANGULAR TOL	± 1.0°	
= 0	4 PLACES	±	
= 0	3 PLACES	±	
= 0	2 PLACES	± 0.13	
= 0	1 PLACE	± 0.25	
= 0	0 PLACES	±	
= 0	DRAFT WHERE APPLICABLE MUST REMAIN WITHIN DIMENSIONS		
		THIRD ANGLE PROJECTION	DRAWING
			D-SIZE
		SERIES	34997
		MATERIAL NUMBER	SEE CHART
		CUSTOMER	GENERAL MARKET
		SHEET NUMBER	1 OF 5


INSPECTION BALLOON NUMBER LOG	
PER DRAWING REVISION:	L10
LAST BALLOON NUMBER USED:	55
ADDED BALLOON NUMBERS:	
REMOVED BALLOON NUMBERS:	9, 10, 11, 12, 56, 57, 58, 59, 60, 61, 62, 63

DOCUMENT STATUS	P1	RELEASE DATE	2021/05/18	01:38:02

DIMENSIONAL CHART FOR MULTIBAY CONFIGURATION:

3 BAY PART NUMBER (TUBE PKG)	3 BAY PART NUMBER (TRAY PKG)	BAY A			BAY B			BAY C			DIM 'A'	DIM 'B'	DIM 'C'	DIM 'D'	DIM 'E'
		CKT	TYPE	POL	CKT	TYPE	POL	CKT	TYPE	POL					
TBD	34997-3000	16	0.64mm	B	16	0.64mm	A	8	0.64mm	A	74.44	71.97	22.86	22.86	12.70
TBD	34997-3001	12	0.64mm	A	12	0.64mm	B	16	0.64mm	A	74.44	71.97	17.78	17.78	22.86
TBD	34997-3002	16	0.64mm	A	12	0.64mm	A	20	0.64mm	A	84.60	82.13	22.86	17.78	27.94
TBD	34997-3003	16	0.64mm	A	20	0.64mm	A	12	0.64mm	A	84.60	82.13	22.86	27.94	17.78
TBD	34997-3004	20	0.64mm	A	20	0.64mm	B	8	0.64mm	A	84.60	82.13	27.94	27.94	12.70
TBD	34997-3005	10	HYBRID	A	16	0.64mm	A	8	0.64mm	A	79.52	77.05	27.94	22.86	12.70
TBD	34997-3006	12	0.64mm	A	8	0.64mm	B	16	0.64mm	C	69.36	66.89	17.78	12.70	22.86
TBD	34997-3007	20	0.64mm	A	20	0.64mm	B	20	0.64mm	C	99.84	97.37	27.94	27.94	27.94
TBD	34997-3008	20	0.64mm	D	16	0.64mm	C	12	0.64mm	C	84.60	82.13	27.94	22.86	17.78
34997-8009	34997-3009	20	0.64mm	C	20	0.64mm	B	20	0.64mm	A	99.84	97.37	27.94	27.94	27.94
34997-8010	34997-3010	12	0.64mm	C	16	0.64mm	C	20	0.64mm	D	84.60	82.13	17.78	22.86	27.94
TBD	34997-3011	8	0.64mm	A	8	0.64mm	B	8	0.64mm	C	54.12	51.65	12.70	12.70	12.70
TBD	34997-3012	14	HYBRID	C	20	0.64mm	B	8	0.64mm	A	84.60	82.13	27.94	27.94	12.70
TBD	34997-3013	10	HYBRID	A	10	HYBRID	B	14	HYBRID	A	99.84	97.37	27.94	27.94	27.94
TBD	34997-3014	10	HYBRID	A	16	0.64mm	B	20	0.64mm	C	94.76	92.29	27.94	22.86	27.94
TBD	34997-3015	10	HYBRID	B	20	0.64mm	A	20	0.64mm	B	99.84	97.37	27.94	27.94	27.94
TBD	34997-3016	12	0.64mm	A	20	0.64mm	C	12	0.64mm	B	79.52	77.05	17.78	27.94	17.78
L10 TBD	34997-3017	10	HYBRID	B	20	0.64mm	A	20	0.64mm	D	99.84	97.37	27.94	27.94	27.94
L10 TBD	34997-3018	12	0.64mm	B	20	0.64mm	C	12	0.64mm	A	79.52	77.05	17.78	27.94	17.78

FUNCTIONAL SYMBOLS	THIS DRAWING CONTAINS INFORMATION THAT IS PROPRIETARY TO MOLEX ELECTRONIC TECHNOLOGIES, LLC AND SHOULD NOT BE USED WITHOUT WRITTEN PERMISSION		
	DIMENSION UNITS	SCALE	CURRENT REV DESC:
$\nabla_A = 0$	mm	1:1	EC NO: 662725 DRWN: CZHANG118 2021/04/28 CHK'D: JDENG02 2021/05/18 APPR: JDENG02 2021/05/18 INITIAL REVISION: DRWN: JFISCHER01 2013/05/31 APPR: RBAUMAN 2013/06/04
$\nabla_C = 0$	GENERAL TOLERANCES (UNLESS SPECIFIED)		
$\nabla_D = 0$	ANGULAR TOL $\pm 1.0^\circ$		
DIVISIONAL SYMBOLS	4 PLACES	$\pm$	
	3 PLACES	$\pm$	
	2 PLACES	$\pm 0.13$	
	1 PLACE	$\pm 0.25$	
	0 PLACES	$\pm$	
DRAFT WHERE APPLICABLE MUST REMAIN WITHIN DIMENSIONS		THIRD ANGLE PROJECTION	DRAWING D-SIZE SERIES 34997 MATERIAL NUMBER CUSTOMER GENERAL MARKET SHEET NUMBER 2 OF 5



STAC64 3-BAY PAP R/A  
LONG PIN HEADER ASSEMBLY SALES DRAWING

PRODUCT CUSTOMER DRAWING

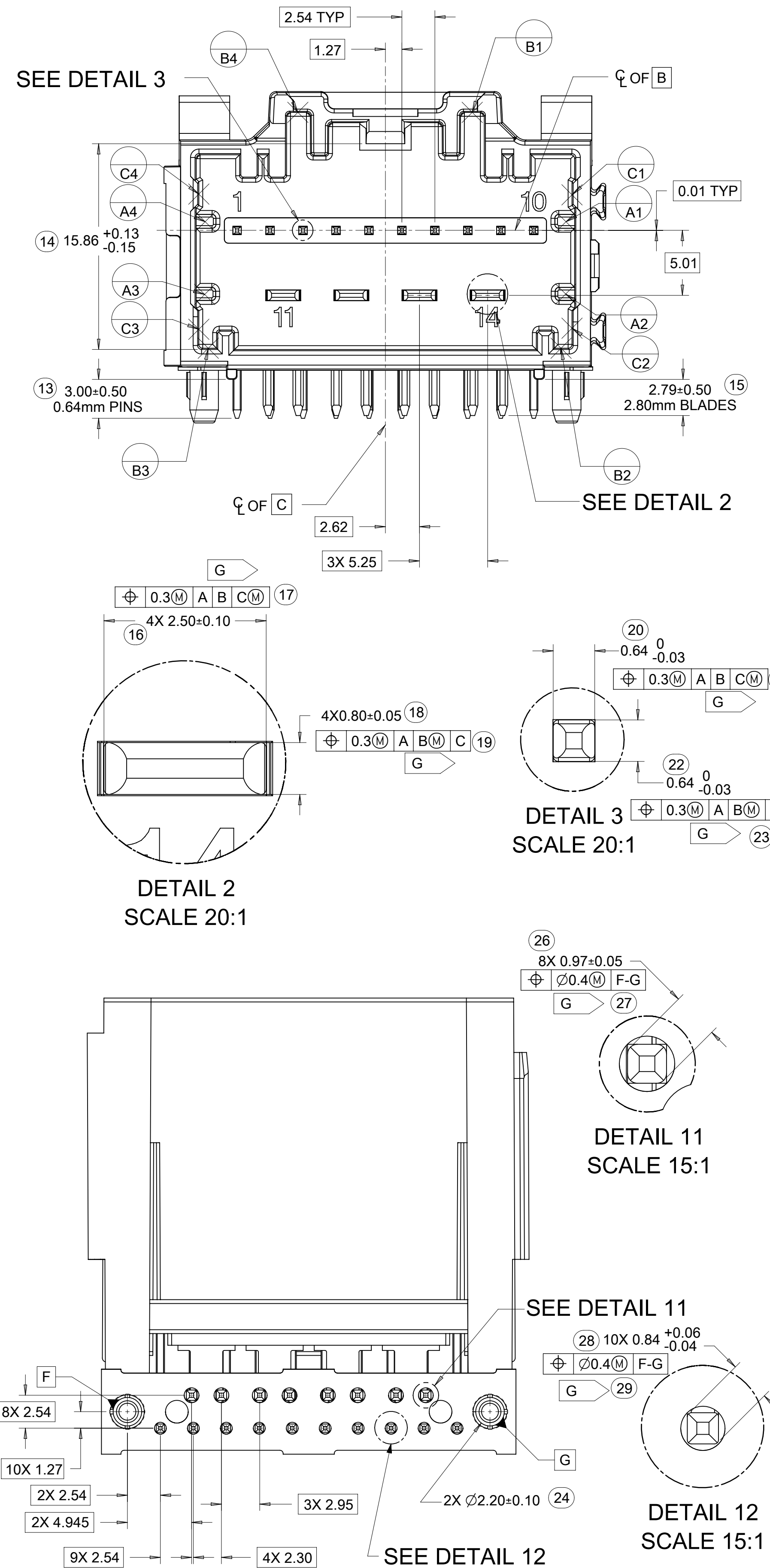
DOCUMENT NUMBER	DOC TYPE	DOC PART	REVISION
SD-34997-300	PSD	001	L10



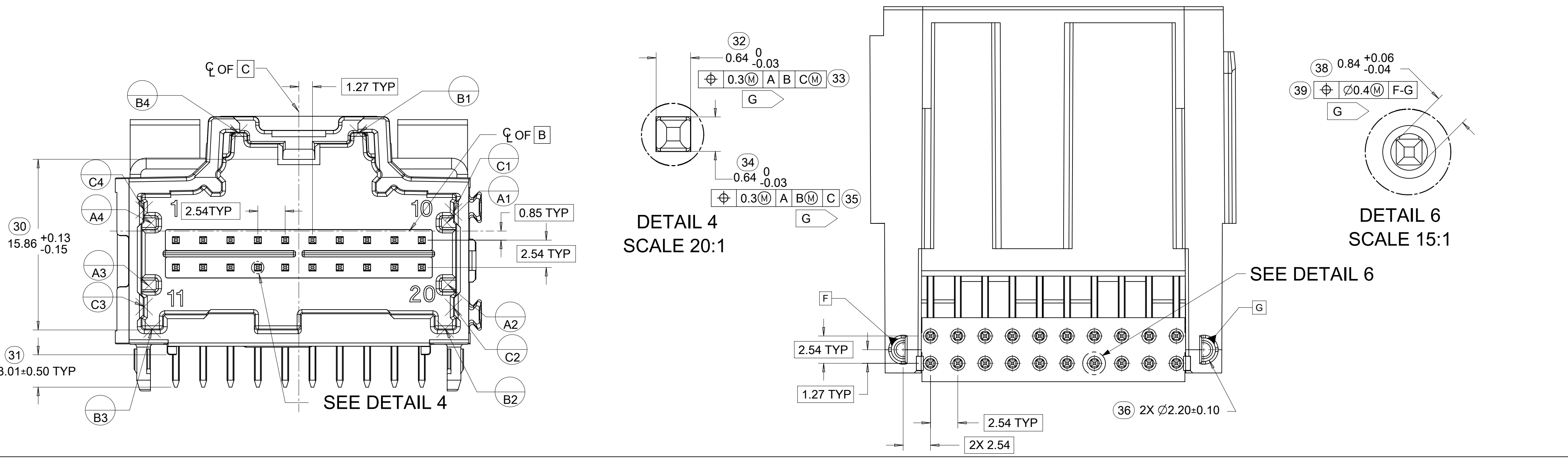


TABLE OF CONTENTS			
8-20CKT 0.64MM HEADER DETAILS,	14CKT HYBRID HEADER DETAILS,	10CKT HYBRID HEADER DETAILS	

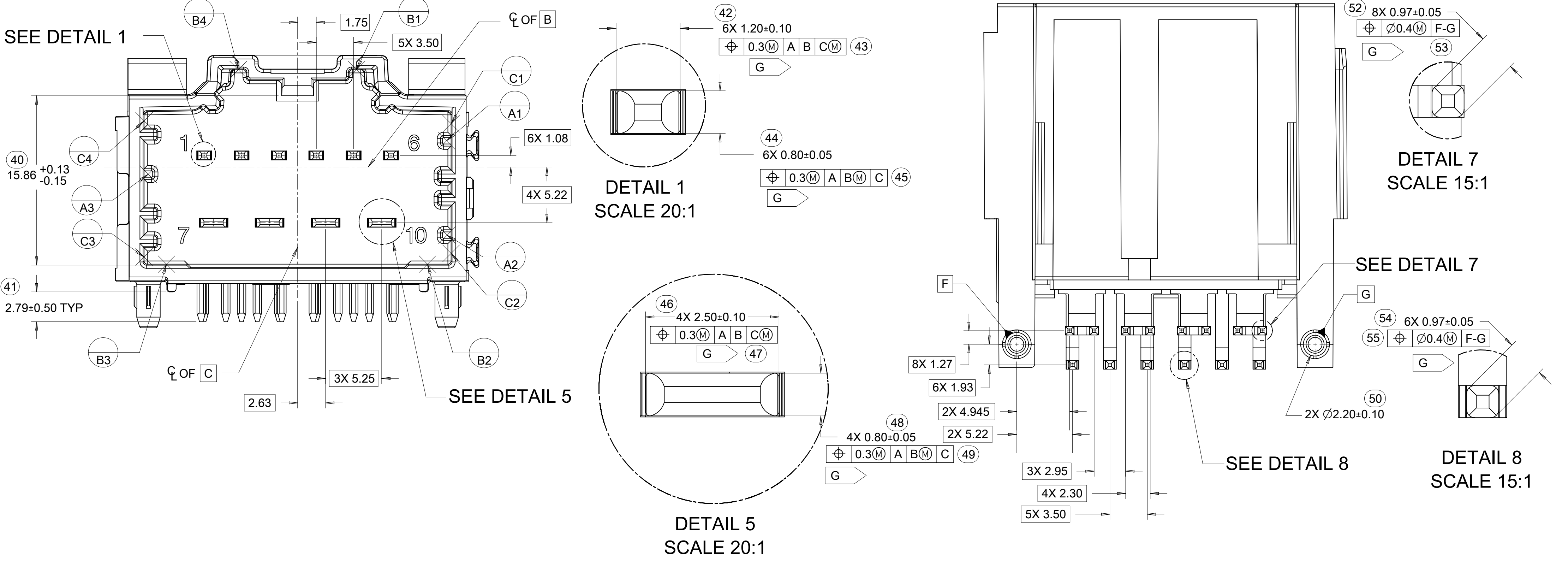
### 14 CKT STAC HYBRID HEADER DETAILS



### 8-20CKT STAC64 HEADER DETAILS

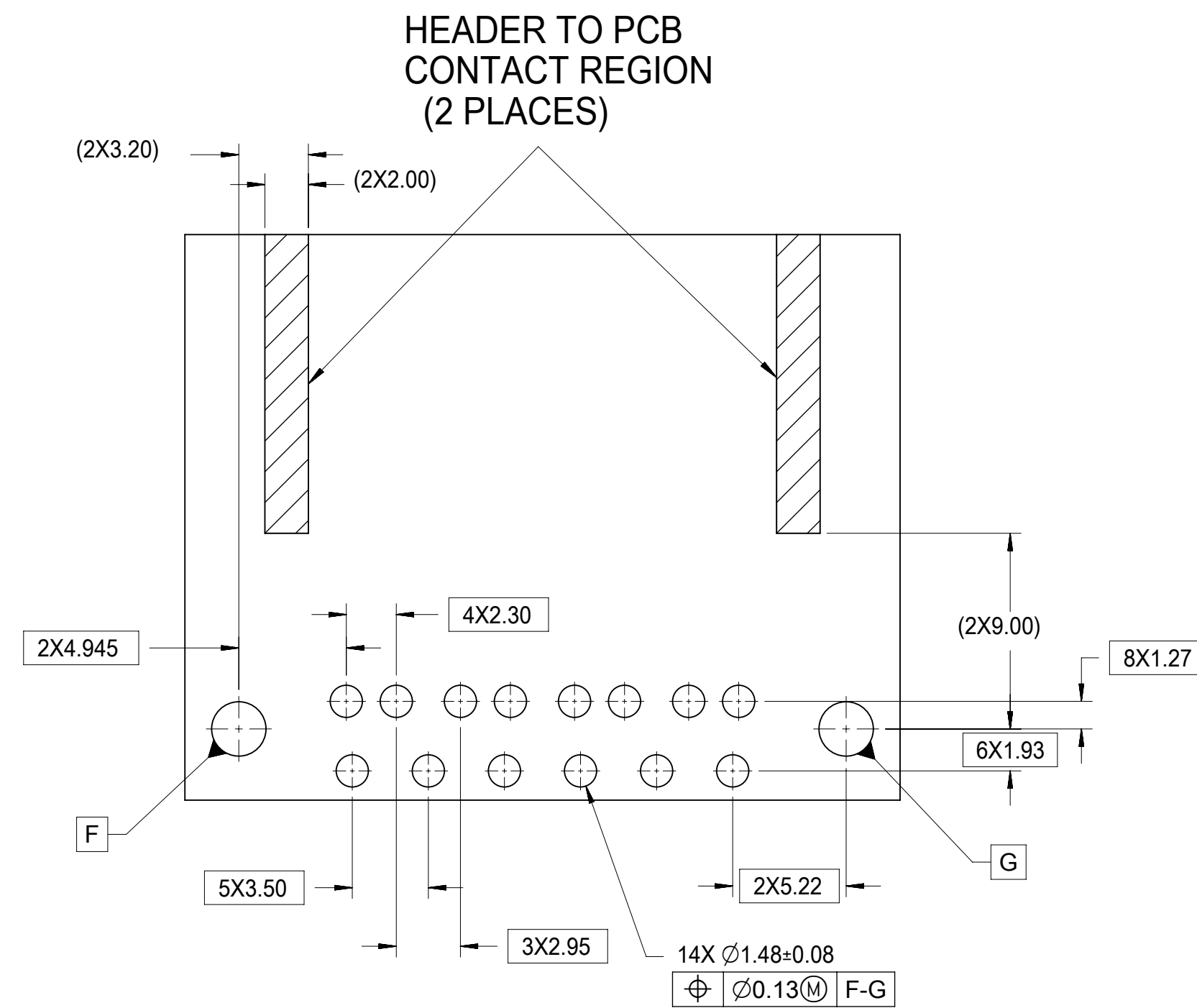


### 10CKT STAC HYBRID HEADER DETAILS

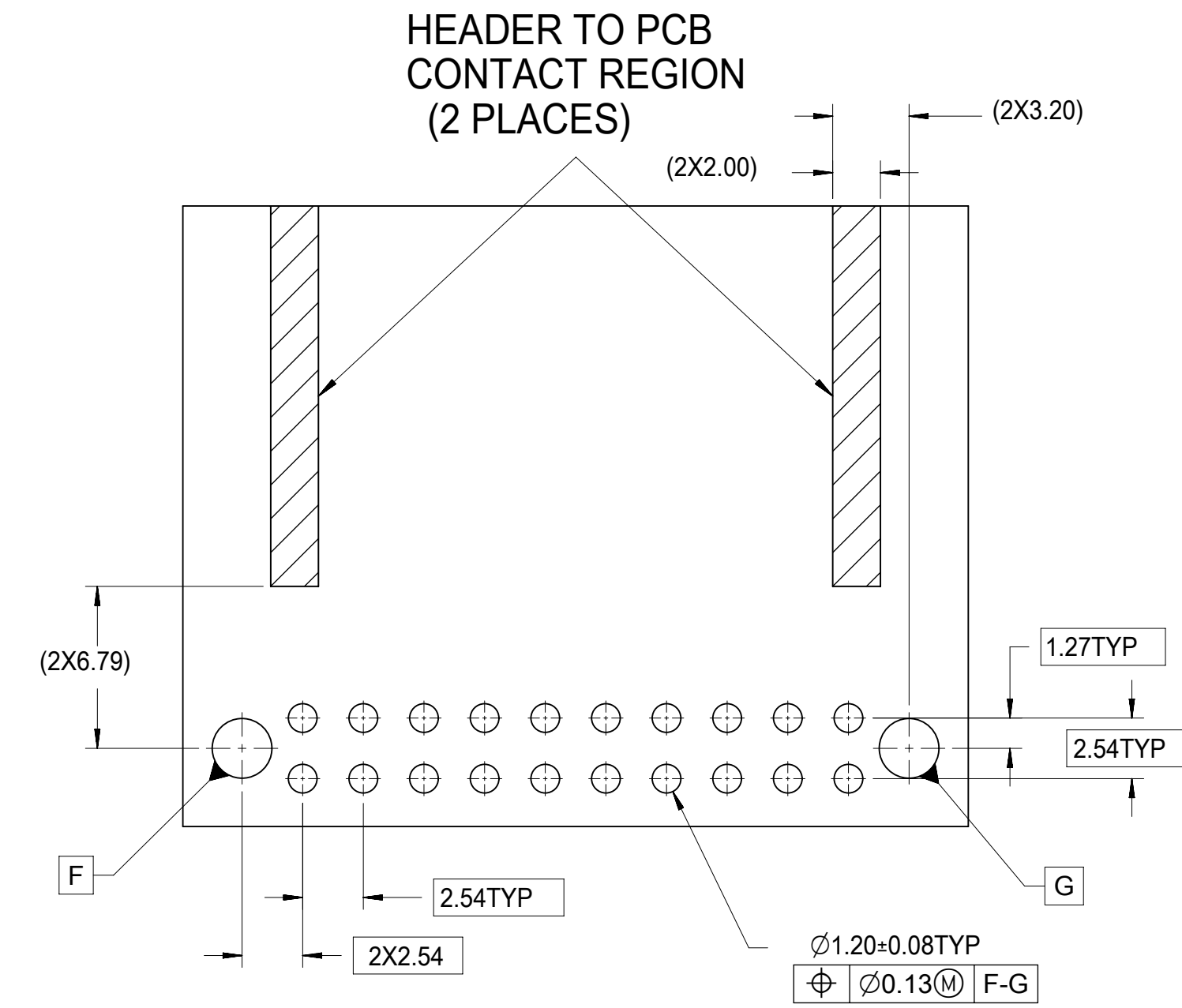


SYMBOLS	THIS DRAWING CONTAINS INFORMATION THAT IS PROPRIETARY TO MOLEX ELECTRONIC TECHNOLOGIES, LLC AND SHOULD NOT BE USED WITHOUT WRITTEN PERMISSION	
	DIMENSION UNITS	SCALE
▽ = 0	mm	4:1
▽ = 0	GENERAL TOLERANCES (UNLESS SPECIFIED)	
▽ = 0	ANGULAR TOL	± 1.0°
▽ = 0	4 PLACES	±
▽ = 0	3 PLACES	±
▽ = 0	2 PLACES	± 0.13
▽ = 0	1 PLACE	± 0.25
▽ = 0	0 PLACES	±
■ = 0	DRAFT WHERE APPLICABLE MUST REMAIN WITHIN DIMENSIONS	
▽ = 0	THIRD ANGLE PROJECTION	
CURRENT REV DESC:		
EC NO: 662725		
DRWN: CZHANG118		2021/04/28
CHK'D: JDENG02		2021/05/18
APPR: JDENG02		2021/05/18
INITIAL REVISION:		
DRWN: JFISCHER01		2013/05/31
APPR: RBAUMAN		2013/06/04
D-DRAWING		SERIES
D-SIZE		34997
MATERIAL NUMBER		CUSTOMER
SEE CHART		GENERAL MARKET
DOCUMENT NUMBER		DOC TYPE DOC PART REVISION
SD-34997-300		PSD 001 L10
SHEET NUMBER		4 OF 5

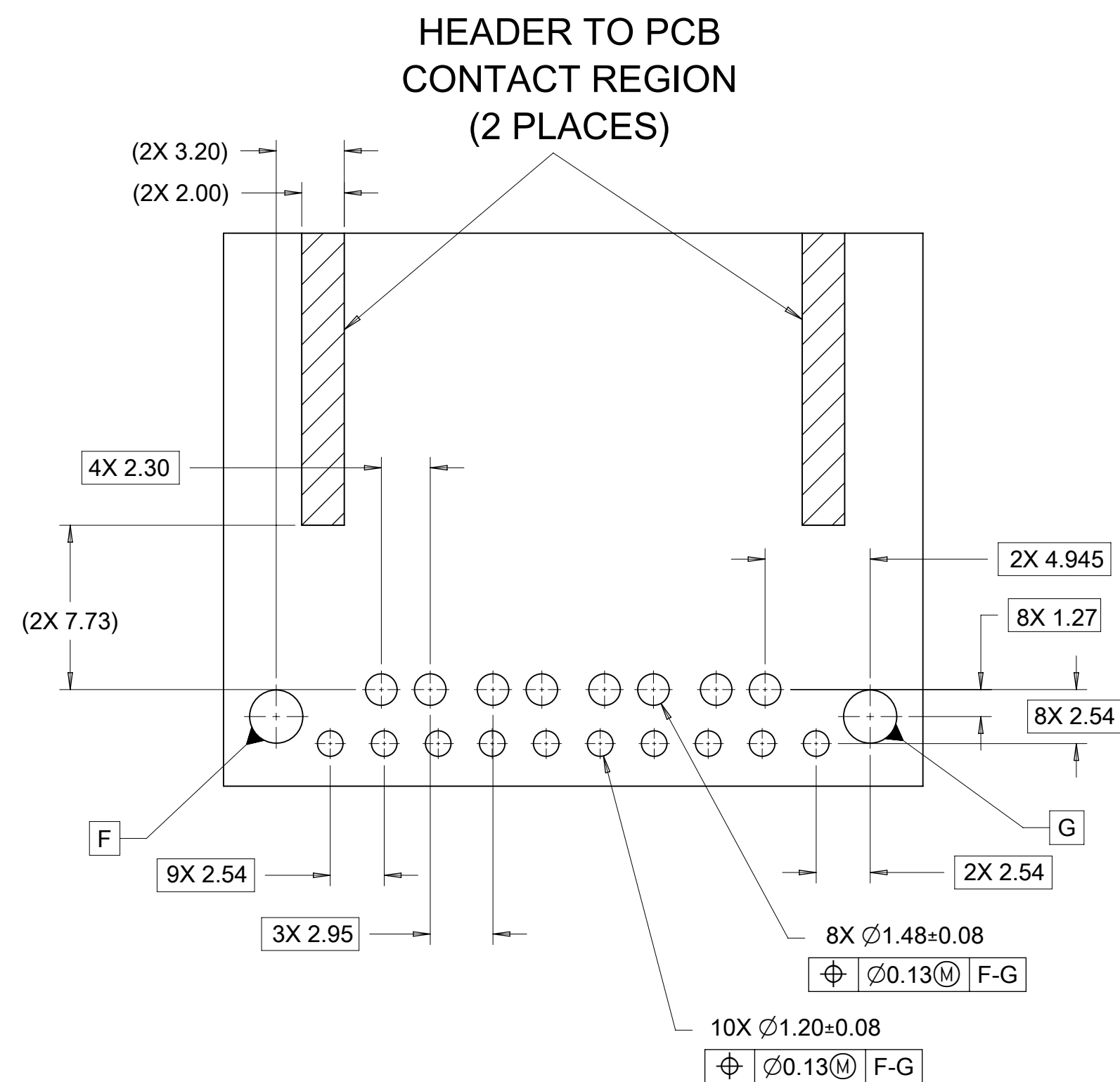
### 10 CKT HYBRID TEMPLATE PCB LAYOUT



### 8-20CKT 0.64mm TEMPLATE PCB LAYOUT

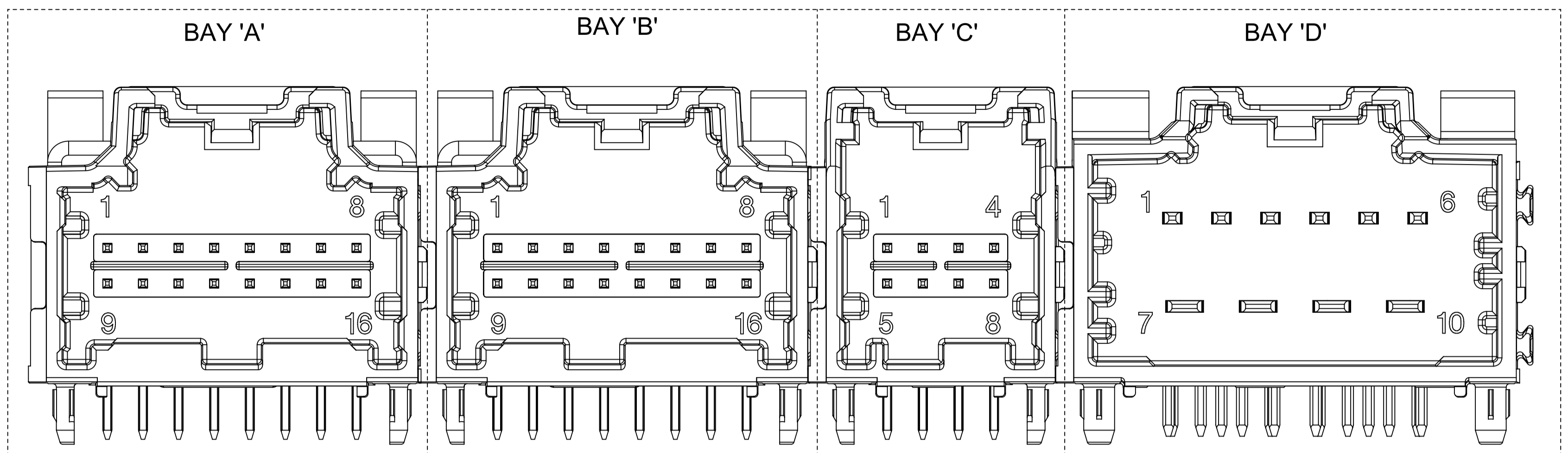


### 14 CKT HYBRID TEMPLATE PCB LAYOUT



SYMBOLS	THIS DRAWING CONTAINS INFORMATION THAT IS PROPRIETARY TO MOLEX ELECTRONIC TECHNOLOGIES, LLC AND SHOULD NOT BE USED WITHOUT WRITTEN PERMISSION		CURRENT REV DESC:		
	DIMENSION UNITS	SCALE			
$\nabla = 0$	mm	4:1			STAC64 3-BAY PAP R/A LONG PIN HEADER ASSEMBLY SALES DRAWING
$\nabla = 0$	GENERAL TOLERANCES (UNLESS SPECIFIED)				
$\nabla = 0$	ANGULAR TOL $\pm 1.0^\circ$		EC NO: 662725		PRODUCT CUSTOMER DRAWING
$\nabla = 0$	4 PLACES	$\pm$	DRWN: CZHANG118	2021/04/28	
$\nabla = 0$	3 PLACES	$\pm$	CHK'D: JDENG02	2021/05/18	DOCUMENT NUMBER: SD-34997-300 DOC TYPE: PSD DOC PART: 001 REVISION: L10
$\nabla = 0$	2 PLACES	$\pm 0.13$	APPR: JDENG02	2021/05/18	
$\nabla = 0$	1 PLACE	$\pm 0.25$	INITIAL REVISION:		MATERIAL NUMBER: SEE CHART CUSTOMER: GENERAL MARKET SHEET NUMBER: 5 OF 5
$\nabla = 0$	0 PLACES	$\pm$	DRWN: JFISCHER01	2013/05/31	
$\nabla = 0$	DRAFT WHERE APPLICABLE MUST REMAIN WITHIN DIMENSIONS		THIRD ANGLE PROJECTION	DRAWING: D-SIZE	SERIES: 34997
$\nabla = 0$					

# 4 BAY STAC64 RIGHT ANGLE PAP HEADER ASSEMBLY (P/N: 34997-4000 SHOWN)



NOTES: VALID UNLESS OTHERWISE SPECIFIED

1. GENERAL:

- a. CONNECTOR HEADER MUST BE VALIDATED TO THE FOLLOWING FUNCTIONAL REQUIREMENTS:  
 PRODUCTS SPECIFICATION:  
 8-20 CKT 0.64 PRODUCT SPEC: PS-34729-020/PS-31408-100  
 10/14CKT CKT HYBRID PRODUCT SPEC: PS-31372-100
- b. APPLICATION REQUIREMENTS (REFERENCE ONLY):  
 APPLICATION SPECIFICATION: AS-34729-020/AS-31408-100
- c. PACKAGING SPECIFICATION PER MOLEX DRAWING PK-31300-892 (TRAY)
- d. PACKAGING SPECIFICATION PER MOLEX DRAWING PK-31301-063 (TUBE)

2. DESIGN: MATERIALS

- a. SHROUD (PLASTIC HOUSING)  
 RESIN - SPS 30%GF
- b. 0.64mm PINS:  
 BASE MATERIAL: C26000  
 PLATING TYPE: AS NOTED
- 1.50mm/2.80mm BLADES:  
 BASE MATERIAL: C19400  
 PLATING TYPE: AS NOTED

3. PLATING REQUIREMENTS:

- a. UNDERPLATING - OVERALL NICKEL
- b. OVERPLATING - OVERALL TIN


- 4. FOR DESCRIPTION OF INDIVIDUAL BAYS, REFER TO THE FOLLOWING SINGLE BAY DRAWINGS:  
 8-20 CKT 0.64: SD-34691-601  
 10CKT HYBRID: SD-34696-100  
 14CKT HYBRID: SD-34773-010

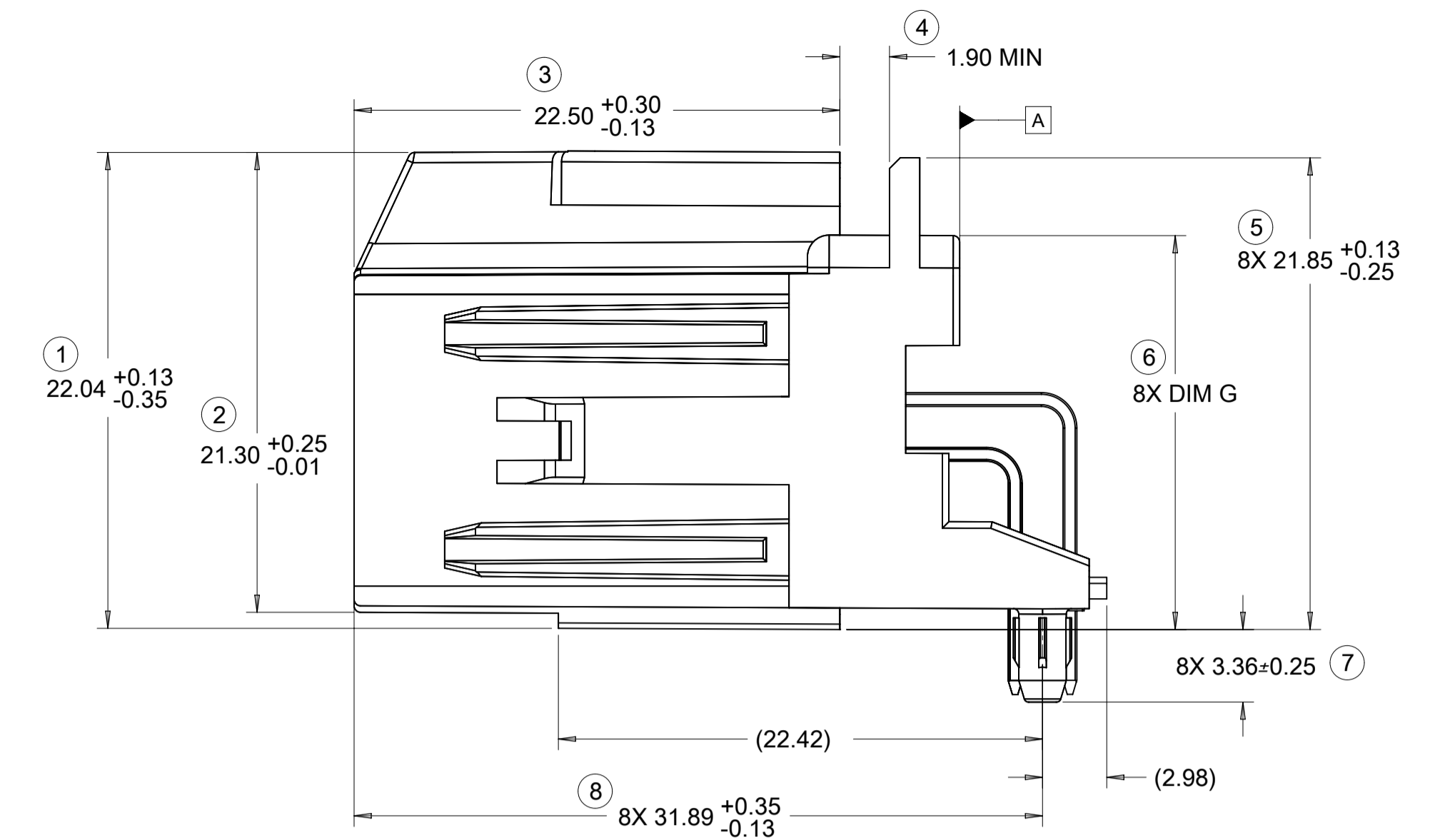
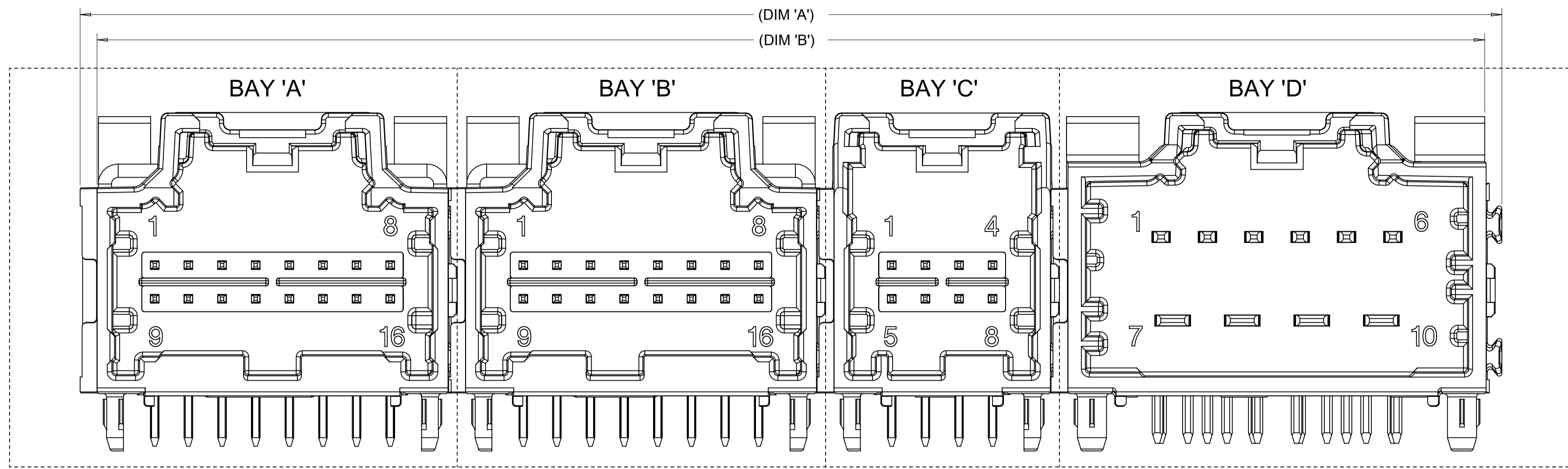
- 5. DENOTES DIMENSIONS THAT MAY BE QUALIFIED WITH A GAUGE.

QUALITY SYMBOLS FA = 0 FE = 0 FE = 0 ▼ = 0 C = 0 ☒ = 0 ■ = 0 ∇ = 0	THIS DRAWING CONTAINS INFORMATION THAT IS PROPRIETARY TO MOLEX ELECTRONIC TECHNOLOGIES, LLC AND SHOULD NOT BE USED WITHOUT WRITTEN PERMISSION										
	EC NO: 612618 DRWN: SHANDITHAVAL CHKD: RBAUMAN APPR: RBAUMAN	2019/02/22 2019/02/23 2019/02/23	GENERAL TOLERANCES (UNLESS SPECIFIED)	DIMENSION UNITS mm	SCALE 4:1	STAC64 4-BAY PAP R/A LONG PIN HEADER ASSEMBLY SALES DRAWING					
	4 PLACES ± 3 PLACES ± 2 PLACES ± 0.13 1 PLACE ± 0.25 0 PLACES ±	ANGULAR TOL ± 1.0 °	DRWN BY JFISCHER01	DATE 2013/05/31							
	C8	REV APPR: RBAUMAN	DRAFT WHERE APPLICABLE MUST REMAIN WITHIN DIMENSIONS	DRIVING SIZE A1	THIRD ANGLE PROJECTION	APPR BY RBAUMAN	DATE 2013/06/04	SERIES 34997	MATERIAL NUMBER SEE CHART	CUSTOMER GENERAL MARKET	
RELEASE STATUS P1 RELEASE DATE 2019/02/23 23:33:07		DOCUMENT NUMBER SD-34997-400		DOC TYPE PSD		DOC PART 001		SHEET NUMBER 1 OF 5			

DIMENSIONAL CHART FOR MULTIBAY CONFIGURATION:

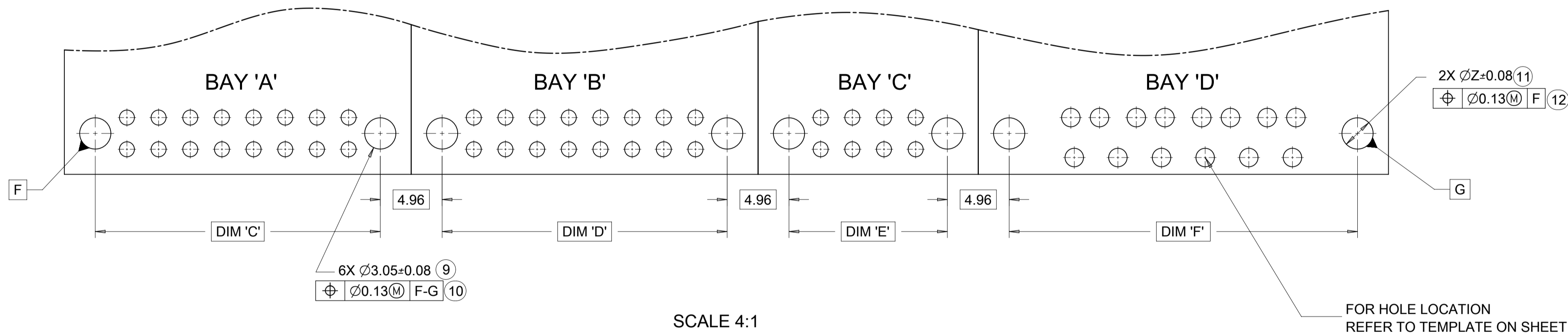
4 BAY PART NUMBER (TUBE PKG)	4 BAY PART NUMBER (TRAY PKG)	BAY A			BAY B			BAY C			BAY D			DIM 'A'	DIM 'B'	DIM 'C'	DIM 'D'	DIM 'E'	DIM 'F'
		CKT	TYPE	POL	CKT	TYPE	POL	CKT	TYPE	POL	CKT	TYPE	POL						
TBD	34997-4000	16	0.64mm	B	16	0.64mm	A	8	0.64mm	A	10	HYBRID	A	107.34	104.87	22.86	22.86	12.70	27.94
TBD	34997-4001	8	0.64mm	A	20	0.64mm	C	20	0.64mm	B	10	HYBRID	A	117.50	115.03	12.70	27.94	27.94	27.94
TBD	34997-4002	20	0.64mm	A	20	0.64mm	B	20	0.64mm	C	20	0.64mm	D	132.74	130.27	27.94	27.94	27.94	27.94
TBD	34997-4003	20	0.64mm	A	20	0.64mm	B	20	0.64mm	C	10	HYBRID	A	132.74	130.27	27.94	27.94	27.94	27.94
34997-9004	34997-4004	12	0.64mm	A	12	0.64mm	B	16	0.64mm	A	16	0.64mm	B	102.26	99.79	17.78	17.78	22.86	22.86

QUALITY SYMBOLS FA = 0 FB = 0 FC = 0 FD = 0 FE = 0 FF = 0 FG = 0 FH = 0 FI = 0 FJ = 0 FK = 0 FL = 0 FM = 0 FN = 0 FO = 0 FP = 0 FQ = 0 FR = 0 FS = 0 FT = 0 FU = 0 FV = 0 FW = 0 FX = 0 FY = 0 FZ = 0 FA1 = 0 FA2 = 0 FA3 = 0 FA4 = 0 FA5 = 0 FA6 = 0 FA7 = 0 FA8 = 0 FA9 = 0 FA10 = 0 FA11 = 0 FA12 = 0 FA13 = 0 FA14 = 0 FA15 = 0 FA16 = 0 FA17 = 0 FA18 = 0 FA19 = 0 FA20 = 0 FA21 = 0 FA22 = 0 FA23 = 0 FA24 = 0 FA25 = 0 FA26 = 0 FA27 = 0 FA28 = 0 FA29 = 0 FA30 = 0 FA31 = 0 FA32 = 0 FA33 = 0 FA34 = 0 FA35 = 0 FA36 = 0 FA37 = 0 FA38 = 0 FA39 = 0 FA40 = 0 FA41 = 0 FA42 = 0 FA43 = 0 FA44 = 0 FA45 = 0 FA46 = 0 FA47 = 0 FA48 = 0 FA49 = 0 FA50 = 0 FA51 = 0 FA52 = 0 FA53 = 0 FA54 = 0 FA55 = 0 FA56 = 0 FA57 = 0 FA58 = 0 FA59 = 0 FA60 = 0 FA61 = 0 FA62 = 0 FA63 = 0 FA64 = 0 FA65 = 0 FA66 = 0 FA67 = 0 FA68 = 0 FA69 = 0 FA70 = 0 FA71 = 0 FA72 = 0 FA73 = 0 FA74 = 0 FA75 = 0 FA76 = 0 FA77 = 0 FA78 = 0 FA79 = 0 FA80 = 0 FA81 = 0 FA82 = 0 FA83 = 0 FA84 = 0 FA85 = 0 FA86 = 0 FA87 = 0 FA88 = 0 FA89 = 0 FA90 = 0 FA91 = 0 FA92 = 0 FA93 = 0 FA94 = 0 FA95 = 0 FA96 = 0 FA97 = 0 FA98 = 0 FA99 = 0 FA100 = 0	THIS DRAWING CONTAINS INFORMATION THAT IS PROPRIETARY TO MOLEX ELECTRONIC TECHNOLOGIES, LLC AND SHOULD NOT BE USED WITHOUT WRITTEN PERMISSION												
	EC NO: 612618 DRWN: SHANDITHAVAL CHKD: RBAUMAN APPR: RBAUMAN REV: 0 C8	2019/02/22 2019/02/23 2019/02/23	GENERAL TOLERANCES (UNLESS SPECIFIED) DIMENSION UNITS: mm SCALE: 1:1 ANGULAR TOL ± 1.0 ° 4 PLACES ± 3 PLACES ± 2 PLACES ± 0.13 1 PLACE ± 0.25 0 PLACES ± DRAFT WHERE APPLICABLE MUST REMAIN WITHIN DIMENSIONS	DRWN BY: JFISCHER01 DATE: 2013/05/31 CHK'D BY: RBAUMAN DATE: 2013/06/04 APPR BY: RBAUMAN DATE: 2013/06/04 DRAWING SIZE: A1 THIRD ANGLE PROJECTION			STAC64 4-BAY PAP R/A LONG PIN HEADER ASSEMBLY SALES DRAWING PRODUCT CUSTOMER DRAWING				SERIES: 34997	MATERIAL NUMBER: SEE CHART	CUSTOMER: GENERAL MARKET
	DOCUMENT NUMBER: SD-34997-400		DOC TYPE: PSD	DOC PART: 001	SHEET NUMBER: 2 OF 5								
	RELEASE STATUS: P1 RELEASE DATE: 2019/02/23 23:33:07												



FOR DIM G:	
8-20CKT 0.64mm	18.40 MAX
10/14CKT Hybrid	18.59 MAX

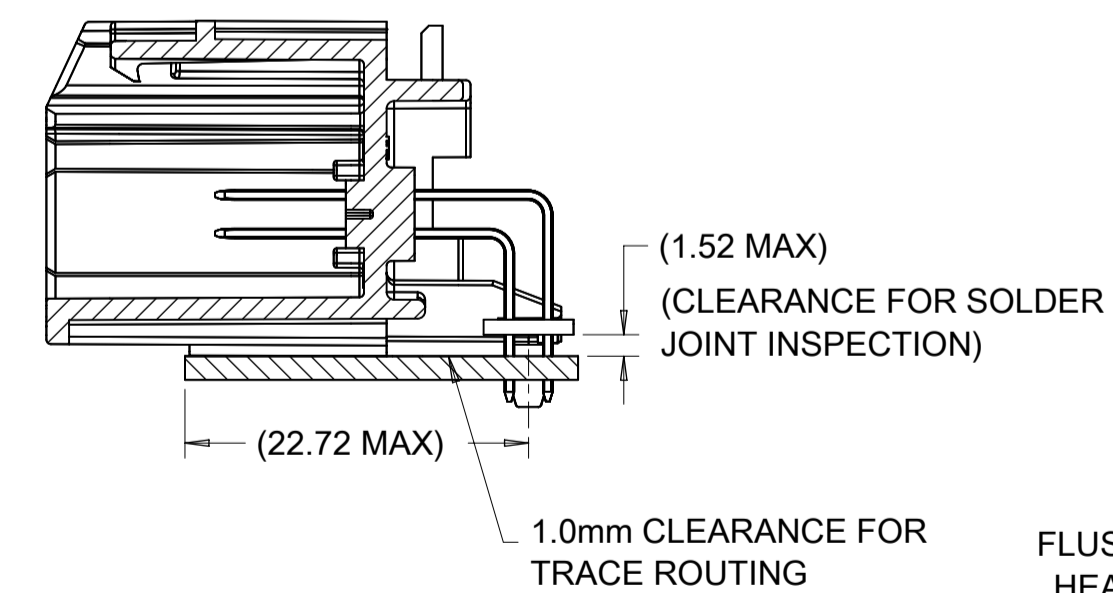
**RECOMMENDED PCB LAYOUT**  
INSERT NECESSARY BAYS USING CHART ON SHEET 2



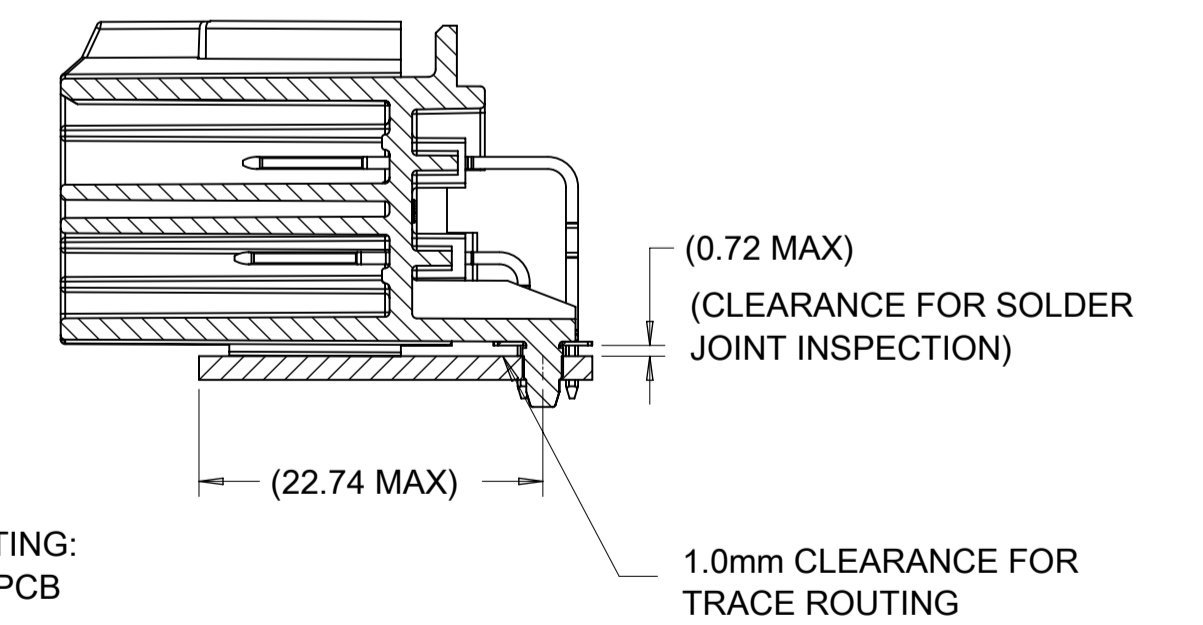
**POST HOLE TABLE:**

FOR DIM Z:	
PRESS FIT:	2.60
DROP IN:	3.05

**8-20CKT 0.64mm**



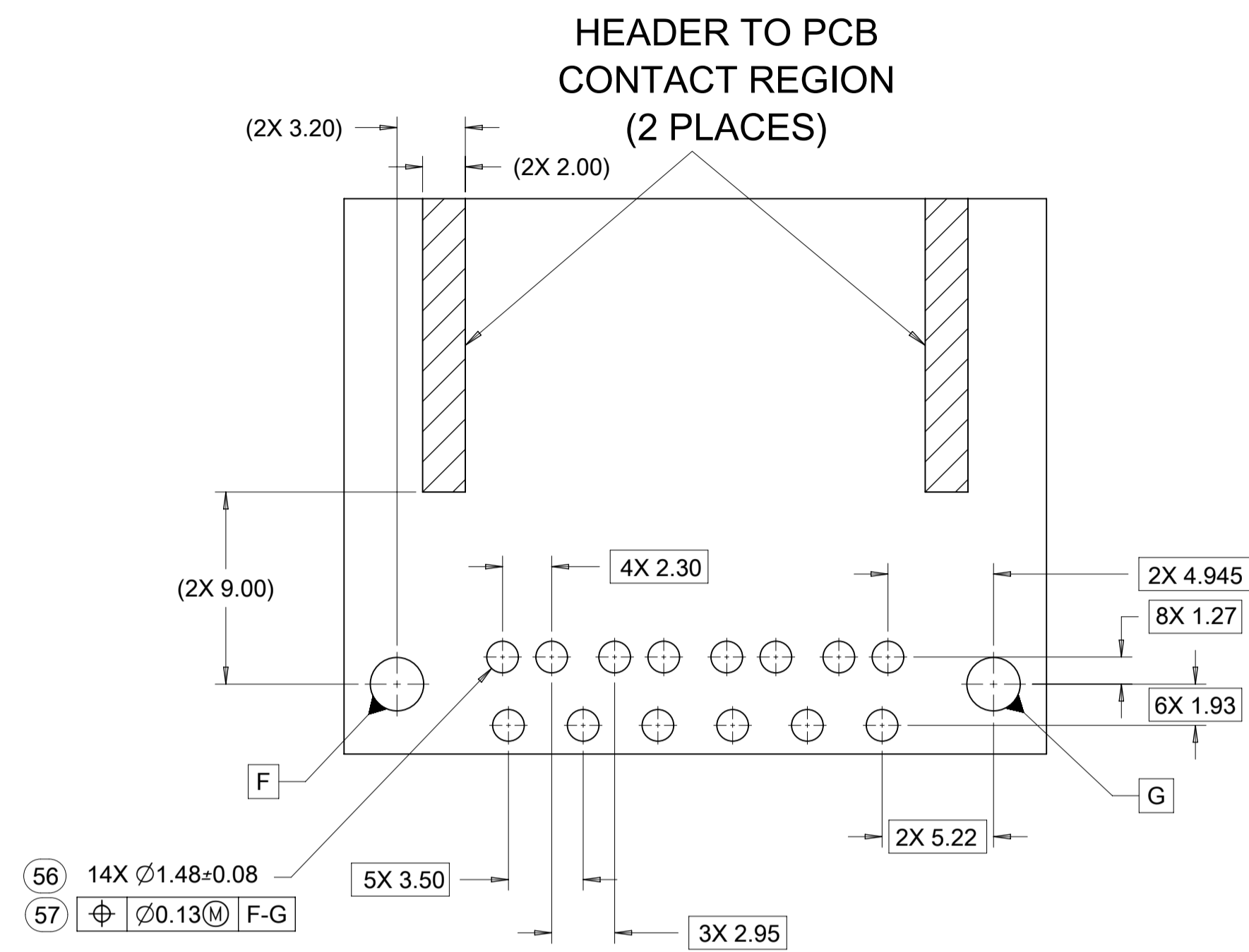
**10/14CKT HYBRID**



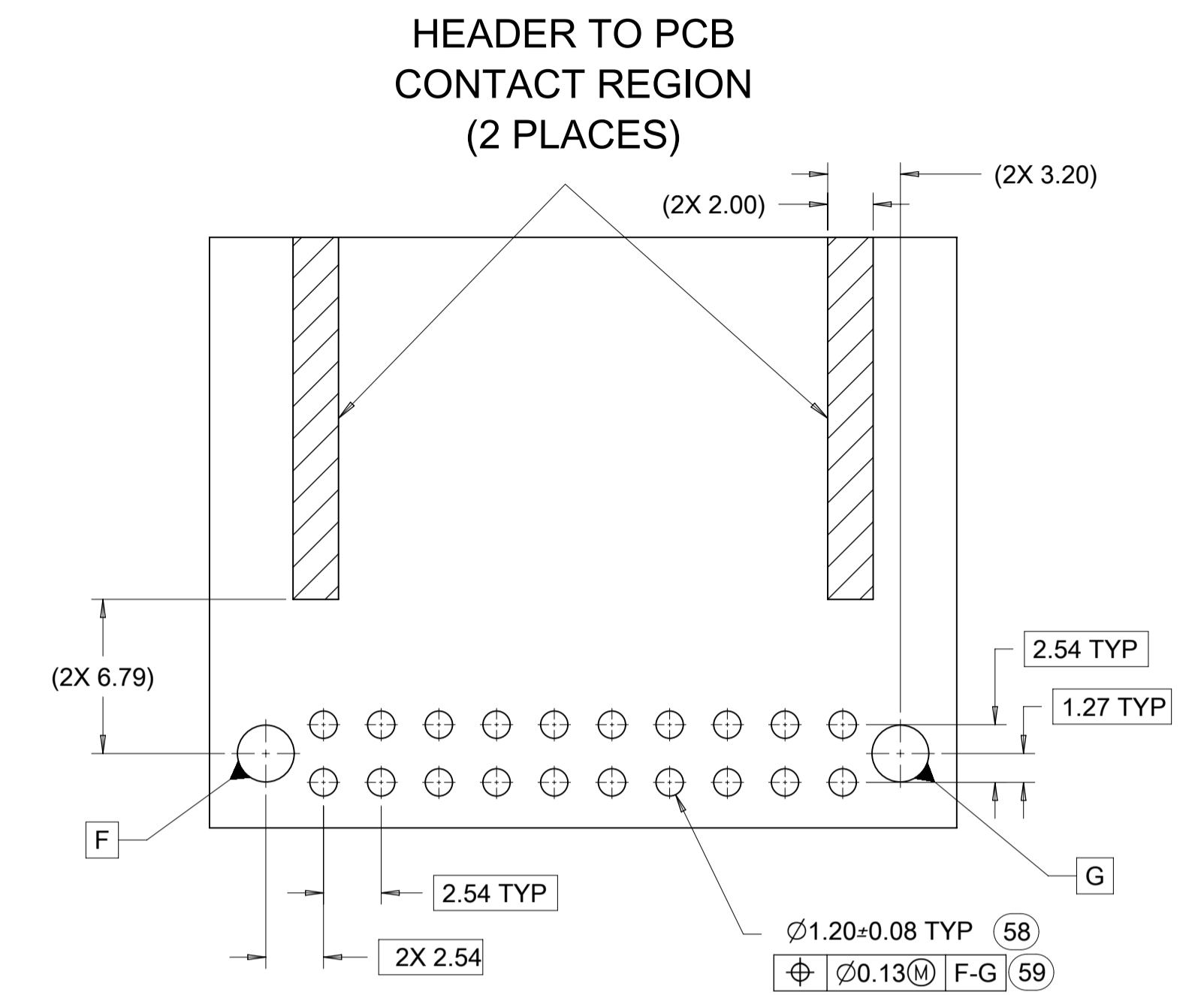
<b>QUALITY SYMBOLS</b> F <sub>A</sub> = 0 F <sub>E</sub> = 0 F <sub>E</sub> = 0 ▽ = 0 C = 0 ⊠ = 0 ■ = 0 ▽ = 0	THIS DRAWING CONTAINS INFORMATION THAT IS PROPRIETARY TO MOLEX ELECTRONIC TECHNOLOGIES, LLC AND SHOULD NOT BE USED WITHOUT WRITTEN PERMISSION					
	EC NO: 612618 DRWN: SHANDHAVAVAL CHKD: RBAUMAN REV APPR: RBAUMAN	2019/02/22 2019/02/23 2019/02/23	GENERAL TOLERANCES (UNLESS SPECIFIED) ANGULAR TOL ± 1.0 ° 4 PLACES ± 3 PLACES ± 2 PLACES ± 0.13 1 PLACE ± 0.25 0 PLACES ±	DIMENSION UNITS: mm SCALE: 4:1 DRWN BY: JFISCHER01 DATE: 2013/05/31 CHK'D BY: [blank] DATE: [blank] APPR BY: RBAUMAN DATE: 2013/06/04		<b>STAC64 4-BAY PAP R/A</b> <b>LONG PIN HEADER ASSEMBLY SALES DRAWING</b>
	DRAFT WHERE APPLICABLE MUST REMAIN WITHIN DIMENSIONS			DRAWING SIZE: A1 THIRD ANGLE PROJECTION		<b>PRODUCT CUSTOMER DRAWING</b>
	RELEASE STATUS: P1 RELEASE DATE: 2019/02/23 23:33:07	SERIES: 34997 MATERIAL NUMBER: SEE CHART CUSTOMER: GENERAL MARKET	DOCUMENT NUMBER: SD-34997-400 DOC TYPE: PSD DOC PART: 001 SHEET NUMBER: 3 OF 5			



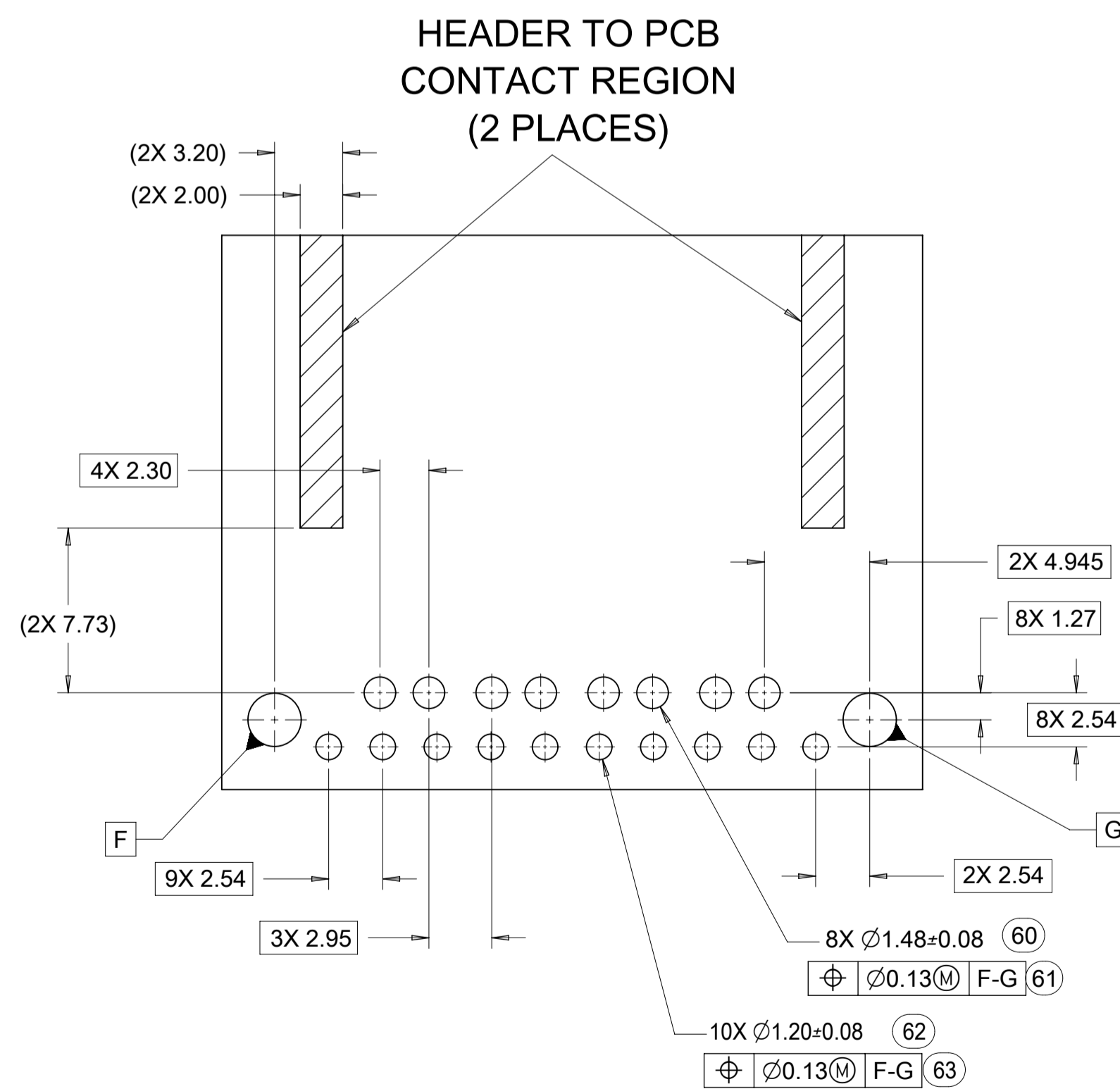
### 10 CKT HYBRID TEMPLATE PCB LAYOUT



### 8-20CKT 0.64mm TEMPLATE PCB LAYOUT



### 14 CKT HYBRID TEMPLATE PCB LAYOUT



THIS DRAWING CONTAINS INFORMATION THAT IS PROPRIETARY TO MOLEX ELECTRONIC TECHNOLOGIES, LLC AND SHOULD NOT BE USED WITHOUT WRITTEN PERMISSION											
QUALITY SYMBOLS	EC NO: 612618 DRWN: SHANDITHAVAL CHKD: RBAUMAN APPR: RBAUMAN	GENERAL TOLERANCES (UNLESS SPECIFIED)		DIMENSION UNITS	SCALE						
		ANGULAR TOL ± 1.0 °		mm	4:1						
FA = 0 FE = 0 FE = 0 ▼ = 0 C = 0 X = 0 ■ = 0 V = 0	2019/02/22 2019/02/23 2019/02/23	4 PLACES ±	DRWN BY	DATE	JFISCHER01 2013/05/31						
		3 PLACES ±	CHK'D BY	DATE							
		2 PLACES ± 0.13	APPR BY	DATE	RBAUMAN 2013/06/04						
		1 PLACE ± 0.25	DRAWING SIZE	THIRD ANGLE PROJECTION	A1						
		0 PLACES ±	DRAFT WHERE APPLICABLE MUST REMAIN WITHIN DIMENSIONS								
RELEASE STATUS		P1	RELEASE DATE		2019/02/23		23:33:07				
SERIES		MATERIAL NUMBER		CUSTOMER		DOCUMENT NUMBER		DOC TYPE		DOC PART   SHEET NUMBER	
34997		SEE CHART		GENERAL MARKET		SD-34997-400		PSD		001   5 OF 5	