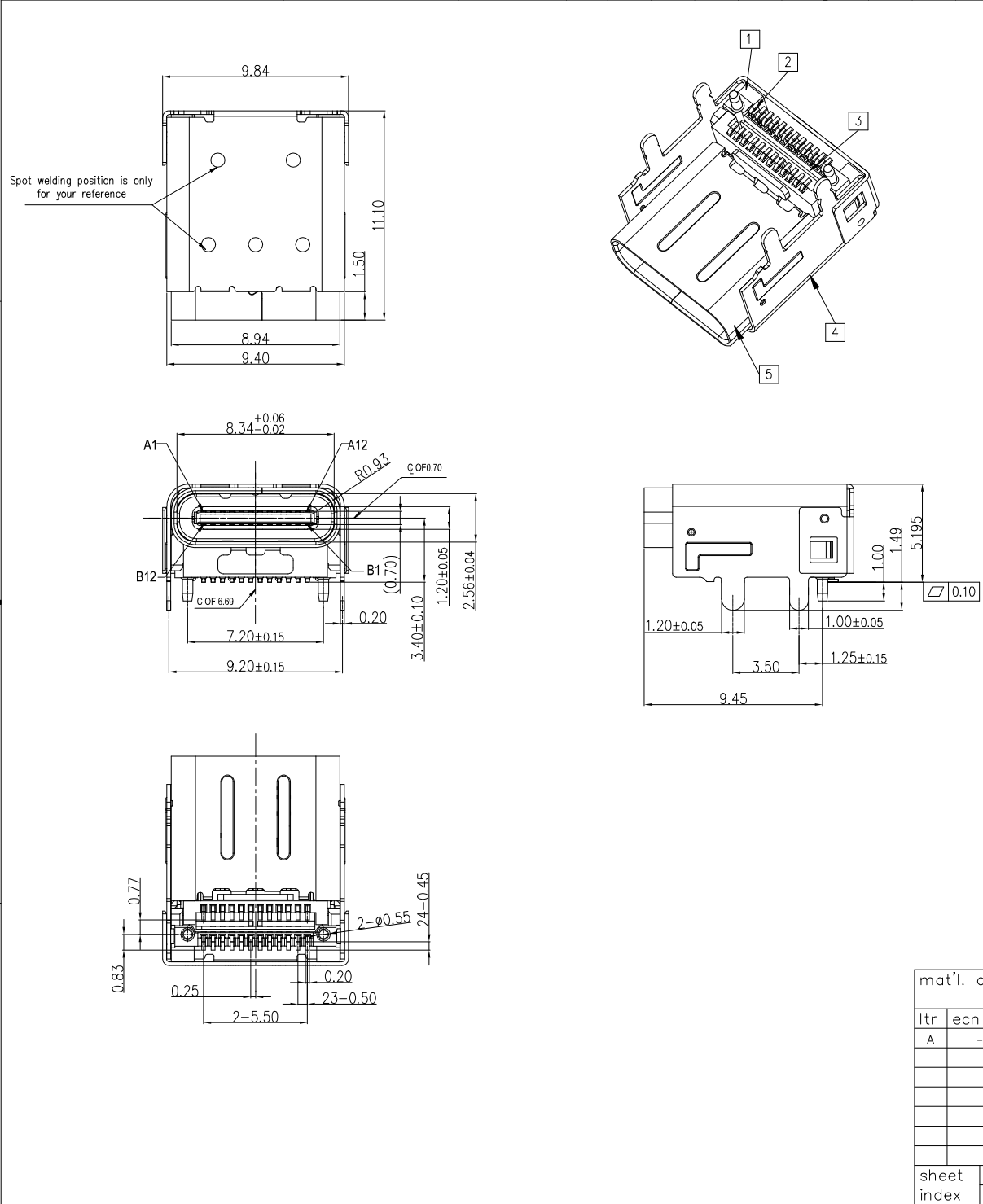


Amphenol FCI

© 2016 AFCI



NOTE:  
 1.MATERIAL SPECIFICATION:  
 1.HOUSING: HIGH TEMPERATURE RESISTANT PLASTIC,UL94 V-0.  
 2.TERMINAL: COPPER ALLOY  
 3.MID PLATE: STAINLESS STEEL  
 4.OUTER SHELL: STAINLESS STEEL  
 5.INNER SHELL: STAINLESS STEEL

2.PLATING SPECIFICATION:  
 2-1.TERMINAL:  
 Ni 50u" MIN. UNDER PLATED OVER ALL.  
 GOLD PLATING ON THE CONTACT AREA.  
 (GOLD PLATING THICKNESS FOLLOW THE P/N)  
 50u" MIN MATTE TIN ON SOLDER AREA.  
 2-2.OUTER SHELL:  
 40u" SOLDER NICKEL PLATING OVER ALL.  
 2-3.INNER SHELL:  
 30u" SOLDER NICKEL PLATING OVER ALL.  
 2-3.MID PLATE:  
 CLEAR ONLY

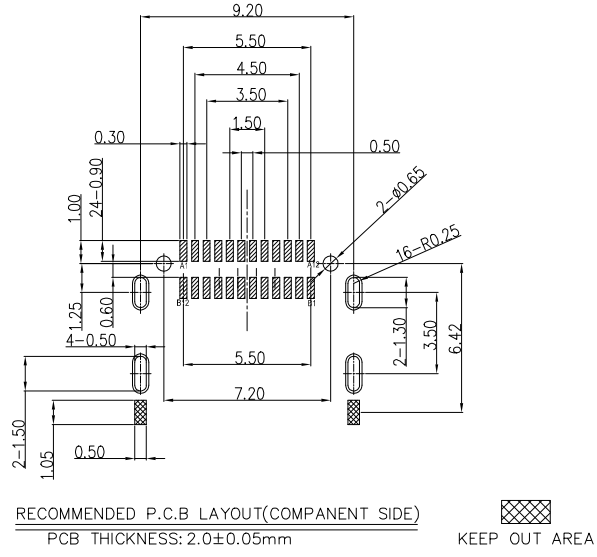
3.ELECTRICAL CHARACTERISTICS  
 3-1.LOW LEVEL CONTACT RESISTANCE: 40mΩ Max  
 3-2.INSULATION RESISTANCE:100MΩ MIN  
 3-3.DIELECTRIC WITHSTANDING VOLTAGE:100 VAC:  
 3-4.CONTACT CURRENT RATING:5A Max

4.MECHANICAL CHARACTERISTICS  
 4-1.INSERTION FORCE: 5~20N  
 4-2.EXTRACTION FORCE: 8~20N  
 AFTER DURABILITY EXTRACTION FORCE: 6~20N  
 4-3.DURABILITY: 10000 CYCLES

5.SALT SPRAY : 24 HOURS  
 6.PRODUCT DESCRIPTION:  
 10163259-000 X X LF

- PACKAGING
- 1. TAPE REEL
- CONTACT AREA PLATING
- 1. GOLD FLASH
- 2. 30u" Au
- 3. 15u" Au

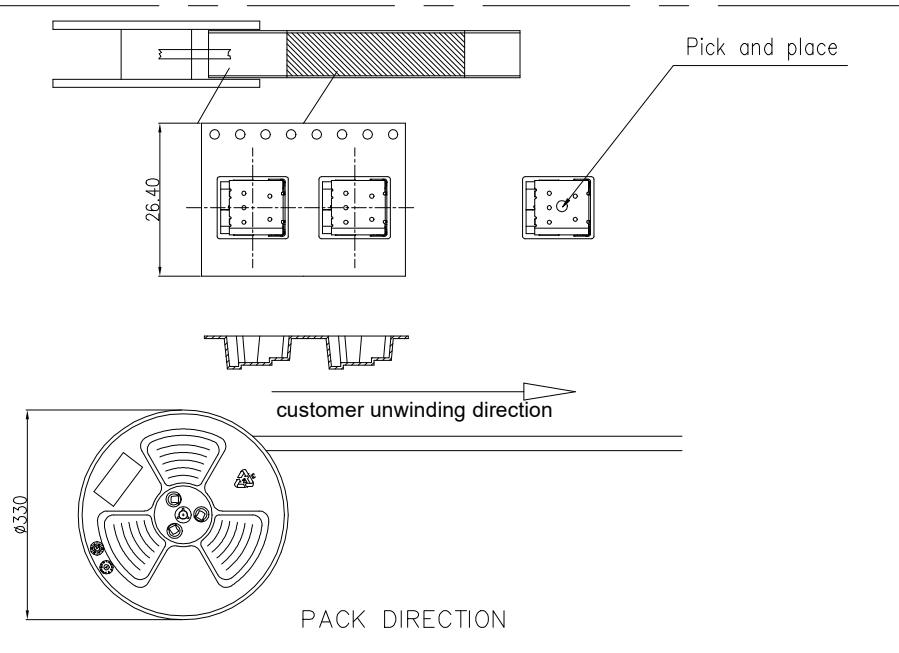
mat'l. code		surface ISO 1302 ✓		tolerance ISO 406 ISO 1101		projection		product family	
ltr		ecn no		dr		date		HPL 511	
A		-		YY		2022/03/18		title	
								USB 3.1 TYPE C RECEPTACLE	
								R/A SMT TYPE	
								dwg no	
								sheet 1 of 2	
								size	
								A3	
								type	
								Product Customer Drawing	
sheet index		revision sheet		A A		1 2			



Pin No	Signal Name	Mating Sequence	Pin No	Signal Name	Mating Sequence
A1	GND	First	B12	GND	First
A2	TX1+	Second	B11	RX1+	Second
A3	TX1-	Second	B10	RX1-	Second
A4	Vbus	First	B9	Vbus	First
A5	CC1	Second	B8	SBU2	Second
A6	D+	Second	B7	D-	Second
A7	D-	Second	B6	D+	Second
A8	SBU1	Second	B5	CC2	Second
A9	Vbus	First	B4	Vbus	First
A10	RX2-	Second	B3	TX2-	Second
A11	RX2+	Second	B2	TX2+	Second
A12	GND	First	B1	GND	First
SHELL	GND		SHELL	GND	

Amphenol  
FCI

© 2016 AFCI



mat'l. code		surface ISO 1302 ✓		tolerance ISO 406 ISO 1101		projection		product family HPL 511		
ltr	ecn no	dr	date	tolerances unless otherwise specified		title		USB 3.1 TYPE C RECEPTACLE R/A SMT TYPE		
A				angles linear	.0±.35	mm		dwg no 10163259 sheet 2 of 2 size A3		
				0'±2'	.00±.25	scale 1:1		type Product Customer Drawing		
				dr	Y-Y Bao	2022/03/18	Amphenol FCI			
				engr	Y-Y Bao	2022/03/18				
				chr	L-Q Lei	2022/03/18				
				appd	Tim Yao	2022/03/18				
sheet index	revision sheet	A 1	A 2							