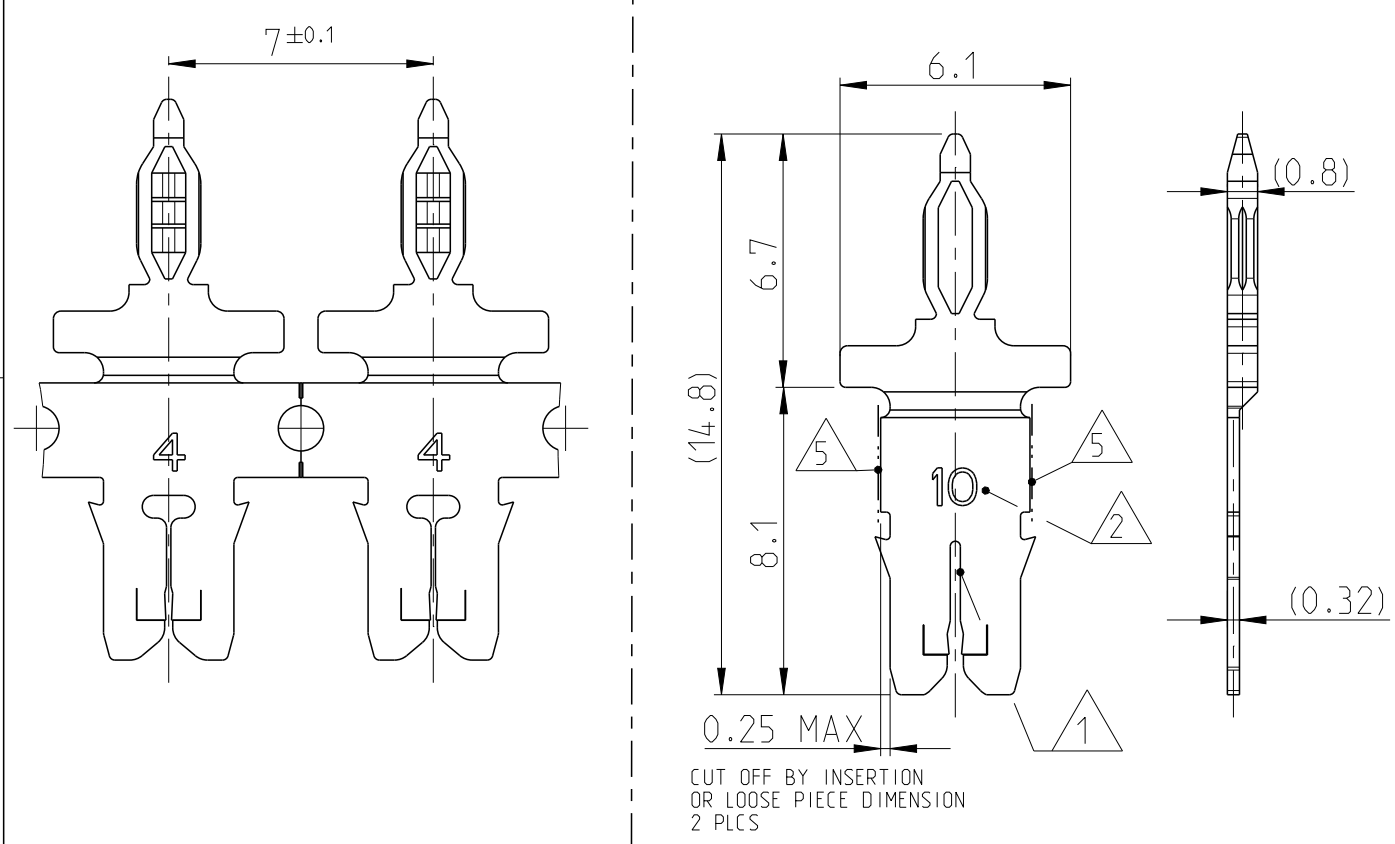
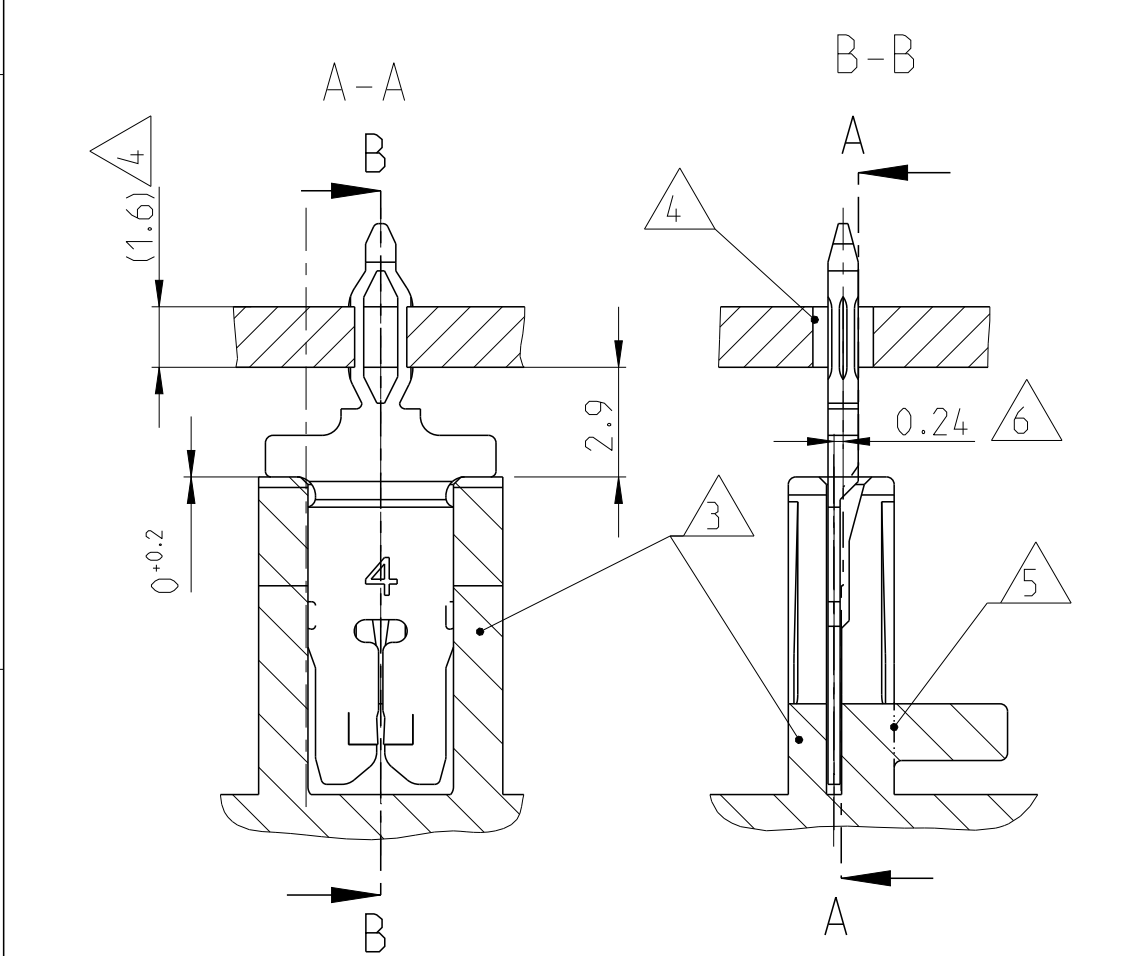


LOC	DIST	REVISIONS					
		P	LTR	DESCRIPTION	DATE	DWN	APVD
A1	-		A8	2825667-1 ADDED	15NOV2019	JA	PKS
			A9	ACTIVATED PART NUMBER 2825667-1	10MAR2020	PC	KR
			A10	REVISED PER ECR-20-010099	20JUL2020	BDA	KR
			A11	REVISED PER ECR-20-012333	09SEP2020	BDA	KR



- 1 SLOT ACCEPTS SINGLE OR DOUBLE COPPER MAGNET WIRE SAME DIAMETERS NOT FOR USE WITH ALUMINUM MAGNET WIRE
 - 2 IDENTIFICATION NUMBER FOR MAGNET WIRE RANGE
 - 3 CONTACT CAVITY AND APPLICATION ACC. SPECIFICATION 114-94229
 - 4 PCB LAYOUT, HOLES ACC. SPECIFICATION. 108-90801
 - 5 CUTTING LINE: AREA WILL BE CUTTED OFF BY TERMINATION
 - 6 CAVITY CENTER TO HOLE CENTER
 - 7 DELIVERY STATE: STRIP ON CORRUGATED REEL WITH PAPER INTERLAYER
 - 8 TO BE APPROVED, ON DEMAND BY TE ENGINEERING
 - 9 MAX. 2 SPLICES PER REEL; SPLICES BE NOT BONDED TOGETHER
 - 10 PRELIMINARY- NOT RELEASED FOR PRODUCTION.
- SEE TABLE



DIRECTION TOP OF REEL	2825667-1	24	-	19.5 - 17.5; 17	-	Ø 0.85mm to Ø 1.12mm	2120747-2
				8		Ø 0.63mm to Ø 0.85mm	
		12	-	22.5 - 20; 19.5	-	Ø 0.63mm to Ø 0.85mm <td>2120746-2</td>	2120746-2
	2825388-1	10	26 - 23	26 - 22.5		Ø 0.4mm to Ø 0.56mm	2120745-2
		6	29.5 - 26.5; 26	29.5 - 26.5; 26		Ø 0.265mm to Ø 0.4mm	2120744-2
		4	33 - 30; 29.5	33 - 30; 29.5		Ø 0.18mm to Ø 0.265mm	2120743-3 2120743-2
	LOOSE PEICE PART NUMBER	IDENTIFICATION NO	DOUBLE WIRE	SINGLE WIRE	DOUBLE WIRE	SINGLE WIRE	PART NO
			1 AWG BARE WIRE RANGE		1 BARE WIRE RANGE		

11 NOTE DELETED
 12 PART NUMBER IS OBSOLETE

THIS DRAWING IS A CONTROLLED DOCUMENT.

DIMENSIONS: mm

TOLERANCES UNLESS OTHERWISE SPECIFIED:
 0 PLC ±0.2
 1 PLC ±0.2
 2 PLC ±0.2
 3 PLC ±0.2
 4 PLC ±0.2
 ANGLES ±1°

MATERIAL: CuNiSi FINISH: TINNED

Customer Drawing

DWN: H. Ballmert 28NOV2012
 CHK: B. Schnaubelt 30NOV2012
 APVD: T. Klenner 30NOV2012

PRODUCT SPEC: 108-94366
 APPLICATION SPEC: 3

NAME: MAG-MATE Slim Line Contact with Multispring

SIZE: A3 CAGE CODE: 00779 DRAWING NO: C-2120743 RESTRICTED TO: -

SCALE: 5:1 SHEET: 1 OF 1 REV: A11